

nineteen thirty five

The iris



Central State Teachers College

**THE
IRIS**



**1
9
3
5**



THE 1935

Copyright 1935
ROBERT E. EMERY
WILSON E. SCHWAHN
R. S. McDONALD

VOLUME 29



IRIS

Published by the
Senior Class
of the
Central State Teachers College
STEVENS POINT, WISCONSIN



P R E S E N

We present to you
this
twenty-ninth volume
of the Iris



T A T I O N



may it recall to you
pleasant days spent
at college,
and help you dream
back again the good
old days at Central State



D E D I C



A T I O N

To

THOMAS ARTHUR ROGERS

■ Gentleman

■ ■ Teacher

■ ■ ■ Loyal Friend



ADMINISTRATION



This three hundredth anniversary of the establishment of the institution that has developed into the modern high school marks a new mile stone in the forward march of education.

It has ever been the aim of Central State Teachers College to keep abreast of the educational times, and, to that end, the college is extending all of its curricula, with the exception of the two year curriculum for the training of teachers of rural schools, to four years in length, and so shaping its courses that its graduates may enter upon graduate work in the State University without loss of time or credit.

It is significant that your Alma Mater is keeping step with educational progress. Her best wishes will go with you in all the good work you do, fully realizing that in you she lives.

Yours sincerely,

F. S. HYER

"There is work to be done
In the blaze of the sun,
And its call sounds a challenge to you.
There are weak men who dream,
There are shrewd men who scheme
But the task waits the man who can do."

The above quotation implies that those who most diligently and earnestly prepare themselves for useful work will find their services in greatest demand. All important roles in the drama of life will be assigned to those whose capabilities have been most fully developed.

Sincerely,

H. R. STEINER



The event of greatest significance in the Grammar Division this year is the abandonment of all short curricula. This means that all new students entering school after the close of the coming summer school who desire to prepare themselves to teach in the Intermediate and Junior High School grades, will enroll in the regular four year curriculum designed to prepare them for that work.

Upon the completion of this curriculum the student will receive the regular Bachelor of Education degree and will be eligible for "North Central" rating just as the graduates of any other standard university or college. Not only will our graduates be eligible for North Central rating, but their degree will admit them to the graduate schools of any of the universities and colleges here in the middle west.

This change is indeed a long step in advance and has been made necessary by the demand of superintendents and school boards for grade teachers with more and more training. It is the consummation of a movement that got under way soon after the close of the World War.

C. F. WATSON



What has this year at college meant to you? It should have meant a year of great opportunities; an opportunity for social contacts through which you have been able to make worthwhile and lasting friendships with both students and faculty; an opportunity for building a hobby which has meant leisure time well spent; an opportunity for growth—the kind of growth which teaches the value of a clean and strong body, which opens new and far-reaching interests, and which builds for you a sane outlook toward life. Above all, a year in college should have given you the opportunity to build the kind of character which makes for true living and citizenship. It is the aim of Central State Teachers College to give you all of these. If you have found these opportunities then, indeed, this year at college has meant much to you.

SUSAN E. COLMAN



The students of Central State Teachers College have had the opportunity of growing up with an institution which has made continuous advances on many fronts. The standing of the school has been steadily improved. The student body has increased, and the faculty has been reinforced with active and interested teachers. The prestige of the school has been enlarged greatly by the inclusion of many part-time students in our evening classes. The success of our athletics, forensics, and other student activities has made the school the object of envy amongst the rival institutions. The students should congratulate themselves in their choice of a college which is "progressive" in the best sense of the term.

E. T. SMITH

Will you make a success of your job? Everyone wants to who has even the average amount of idealism and ambition. Let us reverse the question. Can your job make a success of you? Your job is more than a job in the superficial sense. It is you. It is a part of your very life. It ought to be your hopes put into action; your best mind at work; your ability fully expressed, your energy and possibilities realized in a good piece of work well accomplished. When one can say, "I love my job" it is fairly sure that he is making a success of it and it is making a success of him.

OSCAR NEALE,



JOSEPH M. DAVIDSON



Mr. Davidson was born in Green City, Missouri, December 22, 1892, and died at Stevens Point on September 19, 1934. He will long be remembered among the students of this college as a true friend and sincere gentleman. For several years he served as staff photographer on the Iris.

BESSIE MAY ALLEN, 1913
M.A., University of Columbia
Director, Home Economics Dept.

GEORGE C. ALLEZ, 1929
M.S., Columbia University
Librarian

OLGA BIZER, 1928
B.A., Iowa State Teachers College
Training Teacher, Primary Dept.

LELAND M. BURROUGHS, 1920
M.A., University of Michigan
English, Speech



EDNA CARLSTEN, 1923
B.A.E., Chicago Art Institute
Art

NANCY JANE CHURCH, 1920
B.S., Columbia University
Clothing, Millinery



SUSAN E. COLMAN, 1931
Ph.M., University of Wisconsin
Director, Primary Department

JOSEPH V. COLLINS, 1894
Ph.D., University of Wooster
Mathematics



FACULTY

MILDRED DAVIS, 1928
M.A., University of Iowa
French

LEAH L. DIEHL, 1923
M.A., University of Chicago
Training Teacher, Intermediate Department

CHARLES C. EVANS, 1920
M.S., University of Chicago
Biological Science

VERNA T. GILBERT, 1935
M.A., University of Oregon
Physical Education



WILBUR H. GLOVER, 1934
Ph.D., University of Wisconsin
History

MARY E. HANNA, 1919
B.E., Central State Teachers College
Rural



GERTIE L. HANSON, 1920
M.A., University of Wisconsin
Training Teacher, Junior High School Dept.

ALFRED JAMES HERRICK, 1912
Ph.B., University of Wisconsin
Principal of Training School



FACULTY

FACULTY

EDNA S. HORTON, 1934
Ph.D., University of Minnesota
Biological Science

CLARENCE D. JAYNE, 1929
B.A., University of Washington
Training Teacher, Intermediate Department

WARREN G. JENKINS, 1935
M.A., University of Wisconsin
Social Sciences

JESSIE E. JONES, 1920
M.A., University of Chicago
Biological Science



NORMAN E. KNUTZEN, 1931
M.A., University of Chicago
English

EDWARD L. KOTAL, 1930
Ph. B., Lawrence
Director of Athletics



BESSIE LA VIGNE, 1924
University of Minnesota
Rural

ARTHUR S. LYNESS, 1934
M.S., University of Iowa
Training Teacher, Junior High School Dept.

FACULTY



FACULTY

LULU M. MANSUR, 1911
Columbia University
Library

SYBLE E. MASON, 1930
B.E., Central State Teachers College
Asst. Librarian

HELEN MESTON, 1920
M.A., University of Columbia
Home Economics Department



PETER J. MICHELSEN, 1931
Music Conservatory of Oslo
Vander-Cook School of Music
Director of Music



J. W. MOORE, 1935
Ph.D., University of Minnesota
Biology

JOSEPH MOTT, 1923
M.A., National University
Social Science

OSCAR W. NEALE, 1915
B.S., Fremont College
Director of Rural Department

LYDIA M. PFEIFFER, 1927
M.A., Columbia University
Training Teacher, Intermediate Department



FACULTY

FACULTY

BURTON R. PIERCE, 1923
 Ph.B., Ripon College
 Training Teacher, Principal Junior High School

NELS O. REPPEN, 1932
 Ph.D., University of Wisconsin
 Social Sciences.

RAYMOND M. RIGHTSSELL, 1920
 M.A., University of Cincinnati
 Physics

MAY M. ROACH, 1914
 B.S., University of Minnesota
 Rural Department



THOMAS A. ROGERS, 1914
 M.S., Pennsylvania State
 Chemistry

FRED J. SCHMEECKLE, 1923
 M.S., University of Minnesota
 Chemistry, Agriculture



EVA M. SEEN, 1927
 Ph.D., New York University
 Women's Athletics

ERNEST T. SMITH, 1909
 M.A., University of Chicago
 Social Sciences

FACULTY



FACULTY

FRANK N. SPINDLER, 1901
M.A., Harvard University
Social Sciences

HERBERT R. STEINER, 1918
Ph.M., University of Wisconsin
Social Sciences

VICTOR E. THOMPSON, 1918
Ph.M., University of Wisconsin
Mathematics, Industrial Arts



RUBY TILLESON, 1933
M.A., University of Southern California
Social Sciences, English



ADDA TOBIAS, 1926
M.A., Columbia University
Training Teacher, Primary Department

CHARLES F. WATSON, 1913
M.S., University of Chicago
Geography, Director, Intermediate and Junior
High School Dept.

EMILY WILSON, 1921
M.S., Kansas State Agricultural College
Home Economics Department

GLADYS VAN ARSDALE, 1934
M.A., Columbia University
Training Teacher, Primary Department



FACULTY



GARNET HEILMAN
Secretary to the President

RUTH KNAACK
Assistant Registrar



CAROLYN ROLFSON
Financial Secretary

MARIE SWALLOW
Secretary, Training School

MAINTENANCE

- GEORGE V. STEIN
Chief Engineer
- MRS. FRANCES JONAS
- FRANK MANSAVAGE
- RAY MASON
- L. E. PARKS
- JOHN URBANOWSKI
- JOHN SHERN
Custodian

SECRETARIES

THE CLASSES





Engebretsen

Schwahn

Halvorson

Skinner

THE GRADUATES 1935

PresidentWilfred Engebretsen

Vice-PresidentRichard Schwahn

SecretaryOrville Halvorson

TreasurerMorris Skinner

In September four years ago the Nineteen Thirty Five graduating class matriculated in Central State Teachers College. Beset by economic and social chaos from the inception of the class until its graduation the path of life in college has not been easy for these young men and women. Only the more courageous members of their high school classes dared undertake the hazardous and uncertain venture involved in earning a college diploma. However, the serious attitude with which the senior class attacked its problem shows brightly in its record.

On the gridiron three conference championships in four years mark the fighting spirit of the class. In basketball two championships in four years were achieved. In track, baseball, and the entire sport program, courage and fitness produced results.

Despite the paucity of money in a money economy, this perturbing obstacle did not inhibit social life at college. No class in the history of the school has produced a finer Junior prom. Gaiety, fun, and good sportsmanship were integral elements of the Nineteen Thirty-Four prom.

Scholarship imprints a lasting impress upon its devotees, but not infrequently its benefits are overlooked in the excitement of extra-curricular college life. No such charge can be laid to the Senior class. On the contrary its casualties have been few, and its record clean. Scholastically, the present Senior class rates with the best ever produced at C. S. T. C. Many of its members anticipate successful work in the future in teaching and in the graduate schools.

JANE I. ANDERSON

Stevens Point
Home Economics Course. Major: Home Economics.
Home Economics Club; Y.W.C.A.; ΩMX, Pres, 4; Greek Council; Iris.

MILTON A. ANDERSON

Pulaski
Four Year High School Course. Major: History.
Forum; ΦΣΕ; Football 2, 3, 4; Basketball 2, 3, 4.

ADELINE B. BELLMAN

Ft. Atkinson
Four Year Upper Grade Course.
Round Table; Margaret Ashmun, Sec. Treas. 3; Y.W.C.A.; TGB; W.A.A.

RUSSELL R. BEPLER

Nekoosa
Four Year High School Course. Major: Science.
Forum; "S" Club; Football 3, 4; Basketball 1; Boxing 1, 2, 3, 4.

ELMIRA E. BLECHA

Greenwood
Home Economics Course. Major: Home Economics.
Home Economics Club; ΣZ; Y.W.C.A., Pres. 3.

JOHN A. BOMBERA

Stevens Point
Four Year High School Course. Major: Mathematics.
Forum; Loyola.

RUTH M. BRAHMSTEAD

Almond
Four Year Intermediate Course. Major: History.
Round Table; Harlequin Club; Band.

HAROLD W. CORNELL

Washington Island
Four Year High School Course. Major: History.
Forum.

EDNA M. CROCKER

Stevens Point
Four Year Intermediate Course. Major: History.
Round Table; Harlequin Club; W.A.A.; Athletics.

FLOYD C. CUMMINGS

Tomahawk
Four Year Junior High School Course. Major: History.
Round Table, Vice Pres. 3, Sec. 4; Debate 4; Glee Club 3.





YVONNE DALLICH
Mayville
Four Year High School Course. Major: History.
Forum; ΣZ ; W.A.A.; Iris; Glee Club; Basketball 2, 3, 4.



ROBERT E. EMERY
Plainfield
Four Year High School Course. Major: Chemistry.
Forum; ΣZ ; Bloc; $\chi \Delta P$, Vice Pres. 4; Greek Council; Iris Editor
4; Glee Club 3, 4.

ANN M. FARNEY
Ashland
Home Economics Course. Major: Home Economics.
 ΣZ ; Loyola.



LEO F. FLATLEY
Forest Junction
Four Year High School Course. Majors: Mathematics, General
Science.
Forum; ΣZ .

WARD A. FONSTAD
Stevens Point
Four Year High School Course. Major: History.
Forum; Band 1, 2, 3, 4, Sec. 4; Orchestra; Glee Club.



HAROLD D. FOSS
Stevens Point
Four Year Junior High School Course. Major: General Science.
Round Table; ΣZ 4.

MAGDALEN A. GOGGINS
Oconto Falls
Home Economics Course. Major: Home Economics.
Home Economics Club, Vice Pres. 4; ΣZ ; Loyola, Pres. 4.



NOLAN L. GREGORY
Stevens Point
Four Year High School Course.
Forum; Vice Pres. Sophomore Class; Treas. Junior Class; "S"
Club; $\chi \Delta P$, Pres., Treas.; Iris; Football 1, 2, 3; Basketball
1, 2, 3, Co-Captain 3.

MARGUERETTE A. GROVES
Prentice
Four Year High School Course. Major: Biological Science.
Forum; ΣZ 4; Orchestra 1, 2, 3, 4.

RICHARD B. GUNDERSON
Stevens Point
Four Year High School Course. Major: History.
Forum; Harlequin Club; Loyola; $\Phi \Sigma E$; Greek Council 4.

ORVILLE HALVERSON

Stevens Point
Four Year High School Course. Major: Mathematics,
Forum; Senior Class Treas.

DOROTHY HEUER

Grafton
Home Economics Course. Major Home Economics,
Home Economics Club.

EARL D. HOFFLER

Stevens Point
Four Year High School Course. Major: Mathematics,
Forum; ΣZ ; Margaret Ashmun.

VIOLA M. HOTVEDT

Rosholt
Four Year High School Course. Major: History.
Forum; Harlequin Club; TTB Treas. 4, Vice Pres. 3.

THYRZA E. IVERSON

Cape May Court House, N. J.
Four Year High School Course. Major: General Science.
Forum; ΣZ ; Margaret Ashmun, Pres. 4; Y.W.C.A.; W.A.A.
Pres. 3; Pointer; Orchestra; Glee Club.

GEORGE E. JACOBS

Detroit, Mich.
Four Year Grammar Course.
Grammar Round Table.

MAE KALISKY

Stevens Point
Four Year High School Course. Major English.
Forum; Sigma Tau Delta, Historian; Margaret Ashmun, Sec.;
Pointer.

CAROL KEEN

Antigo.
Home Economics Course. Major: Home Economics,
Home Economics Club; ΣZ ; Y.W.C.A., Sec. 3, Cabinet 2; TTB;
Iris.

VIOLA C. KENNEDY

Randolph
Four Year Rural Supervisors Course.
Rural Life Club.

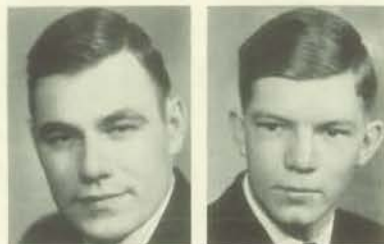
FRANK L. KLEMENT

Leopold
Four Year High School Course.
Sophomore Pres.; Forum, Vice Pres.; ΣZ ; Margaret Ashmun;
Loyola, Pres.; XAP, Pres., Vice Pres., Treas.; Gr. Council,
Pres.; Pointer, Ed.; Football 1, 2, 3; B. B. 1, 2, 3; Track 2, 3.





SADIE E. KLIMECK
Stetsonville
Home Economics Course. Major: Home Economics.
Home Economics Club, Sec. Treas., 4; Sigma Zeta; Y.W.C.A.



GUY R. KRUMM
Argonne
Four Year High School Course. Major: History.
Forum; Junior Class Pres.; "S" Club; ΦΣΕ Pres., Vice Pres.,
Treas.; Greek Council, Pres.; Iris 3, 4; Basketball 1, 2, 4
Co-Captain 3.



HOWARD E. KUJATH
Westfield
Four Year High School Course. Major: Mathematics.
Forum; Sigma Zeta; Pointer, Business Manager 4.



ARTHUR W. LAABS
Curtis
Four Year High School Course. Major: Mathematics.
Forum; Class Vice Pres. 4; XΔP, Treas. 4; Boxing 1, 2, 3.



DOROTHY L. LAVINE
Wisconsin Rapids
Four Year High School Course. Major: English.
Forum; Margaret Ashmun Club.



JEAN HARRIET LYNN
Port Edwards
Four Year High School Course. Major: English.
Forum; Sigma Tau Delta, Sec. 4; Margaret Ashmun, Sec. 3;
Y.W.C.A.; W.A.A. Vice Pres. 4; TGB.; Pointer 3, 4.



ROBERT S. McDONALD
Stevens Point
Four Year High School Course. Major: Mathematics.
Forum; XΔP, Vice Pres. 2, 3; Iris 4; Glee Club, Pres. 4.



ROBERT McMILLEN
Endeavor
Four Year State Graded Prin. Course. Major: General Science.
Rural Life Club, Pres. 3; Band; Glee Club.

AARON MANNIS
Stevens Point
Four Year High School Course. Major: History.
Forum; Sigma Tau Delta; Margaret Ashmun; ΦΣΕ, Sec. 4;
Orchestra; Band 1, 2, 3, 4, Pres. 2; Glee Club.

WALDO MARSH
Stevens Point
Four Year High School Course. Major: History.
Forum; Basketball 2, 3, 4, Captain 4.

OTIS K. MICKELSON

Exeland
Four Year High School Course. Major: History.
Forum; Band; Orchestra.

MARION L. MURGATROYD

Wisconsin Rapids
Four Year High School Course. Major: English.
Forum; Sigma Tau Delta; Margaret Ashmun; Glee Club.

ROBERT L. NEALE

Stevens Point
Four Year State Graded Course. Major: General Science.
Rural Life Club, Pres. 4; ΣZ , Vice Pres. 4; Harlequin Club;
Iris; Pointer 1; Tennis 1, 2, 3.

BONITA R. NEWBY

Plover
Four Year High School Course. Major: English.
Forum, Treas.; Sigma Tau Delta, Pres. 3, Vice Pres. 4; Margaret
Ashmun; Harlequin, Vice Pres. 4; Y.W.C.A.; W.A.A., Sec. 3;
TTB, Vice Pres. 4; Iris; Orchestra; Band; Athletics.

SOPHIE NICOLLAZZO

Kenosha
B.E. Home Economics, Feb. '35.

ARTHUR H. NYGARD

Hawkins
Four Year High School Course. Majors: History, Genl. Science.
Forum; ΣZ ; $\Phi \Sigma E$, Pres. 3, Sec. 2; Greek Council 3; Basketball.

JACK OGG

Youngstown, Ohio
Four Year State Graded Course. Major: English.
Rural Life Club; Sigma Tau Delta, Vice Pres. 4; Margaret Ash-
mun, Vice Pres. 4; Harlequin Club, Pres. 4; Iris; Pointer; Ora-
tory; Debate.

ALEX F. PERRODIN

Wisconsin Rapids
Four Year High School Course. Major: General Science.
Forum; Sigma Tau Delta; ΣZ ; Margaret Ashmun.

LEONARD S. ROY

Oconto
Four Year High School Course. Majors: History, Geography.
Forum; "S" Club; Football 1, 2, 3; Track 1, 2, 3, 4; Men's Room
Representative 2.

ELMER W. RUH

Milladore
Four Year High School Course. Major: Mathematics.
Forum; ΣZ ; Pointer, Circulation Manager.





ELIZABETH M. SANSUM

Baraboo
Home Economics Course. Major: Home Economics.
Home Economics Club; ΣZ ; Y.W.C.A.; Glee Club; Basketball.



RICHARD W. SCHWAHN

Stevens Point
Four Year High School Course. Majors: General Science,
Chemistry.
Freshman Pres.; Senior Vice Pres.; Forum; ΣZ Pres. 4; "S"
Club, Pres. 4; $\chi \Delta P$, Pres. 4, Sec. 3; Gr. Council; Iris; Band;
Glee Club; Football 1, 2, 3, Capt. 3; Tennis 1, 2, 3.

WILSON SCHWAHN

Stevens Point
Four Year High School Course. Major: History.
Forum; Bloc, Pres. 4; $\chi \Delta P$, Sec. 2, Vice Pres. 3; Greek Council;
Tennis 2, 3; Iris, Business Manager 4.



LYMAN A. SCRIBNER

Stevens Point
Four Year High School Course. Majors: Mathematics, General
Science.
Freshman Men's Room Representative; Forum; "S" Club;
Track 1, 2, 3, Captain 3.

VELMA C. SCRIBNER

Stevens Point
Four Year High School Course. Major: Biological Science.
Forum; Harlequin; Y.W.C.A.; W.A.A.; TTB; Band 1, 2, 3, 4;
Orchestra 1, 2, 3, 4; Glee Club; Sophomore Sec.; Junior
Vice Pres.



ASHER H. SHOREY

Stevens Point
Four Year High School Course. Major: History.
Forum; "S" Club; $\Phi \Sigma E$, Pres. 4, Treas. 3; Iris; Basketball 3, 4.

CLARENCE E. SCHULTE

Marshfield
Four Year High School Course. Major: History.
Forum.



MORRIS F. SKINNER

Waupaca
Four Year High School Course. Major: English.
Forum; Sec. Senior Class; $\Phi \Sigma E$, Vice Pres.; Orchestra; Band;
Glee Club; Tennis 1, 2, 3.

ROBERTA SPARKS

Stevens Point
Home Economics Course. Major: Home Economics.
Home Economics Club, Vice Pres. 3; ΣZ , Sec.-treas. 4; W.A.A.,
Vice Pres. 3.

HAROLD C. SULTZE

Almond.
Four Year High School Course. Major: Mathematics.
Forum.

EUGENE H. TAEGE
 Wausau
 Four Year State Graded Course. Major: Biology.
 "S" Club; Debate.



MARGARET F. TURRISH
 Stevens Point
 Four Year High School. Majors: English, History.
 Forum; Sigma Tau Delta, Treas. 4; Margaret Ashmun; TTB,
 Pres. 4; Greek Council, Treas. 4; Iris.



EINO N. TUTT
 Gleason
 Four Year State Graded Course. Major: History.
 Rural Life Club, Treas. 4; ΣΖ; Iris; Glee Club.

GERTRUDE A. VAN ADESTINE
 Manawa
 Home Economics Course. Major: Home Economics.
 Home Economics Club, Pres. 4; Loyola, Sec.-treas. 3; Glee Club.



RHEA J. ADSIT
 Manawa
 One Year Rural Course.

VIOLET MAE BALLARD
 Ogdensburg
 Two Year State Graded Course.



JOSEPHINE BELL
 Humbird
 Two Year State Graded Course.

EVELYN L. BORST
 Green Bay
 Two Year State Graded Course.



EDNA T. BORTZ
 Stevens Point
 Two Year Intermediate Course.

VELVA L. BOWEN
 Almond
 Two Year Primary Course.



HELEN A. BRADY
Tigerton
Two Year Primary Course.

GERTRUDE A. BROOKS
Ogdensburg
One Year Rural Course.



DOROTHY L. BRYs
Mosinee
Two Year Intermediate Course

MINERVA L. BUSSE
Randolph
Two Year State Graded Course.



MAGDA CHRISTENSON
Scandinavia
One Year Rural Course.

HELEN MARIE COTEY
Merrill
Two Year State Graded Course.



BERNARD A. CUNNINGHAM
De Soto
Two Year State Graded Course.

ELEANOR K. CURRAN
Stevens Point
Two Year Primary Course.



EMILY L. DAVIES
Four Year Primary Course. Major: Primary Education,
Primary Council.

JULIANA M. DeHORN
White Lake
Two Year Intermediate.

HAROLD J. DAVEL
Loyal
Two Year State Graded Course.



LILYAN R. DE KEYSER
Tigerton
Two Year Upper Grade Course.



LAURA G. DENSCHE
Stevens Point
Two Year State Graded Course.

MYRNA M. DOANE
Plover
Two Year State Graded Course.



MARIE T. DUCKETT
West De Pere
Two Year Intermediate Course.

EUNICE E. FERG
Manawa
One Year Rural Course.



LILLIAN E. FRAWLEY
Kewaunee
Three Year Intermediate Course.

LORRAIN M. GETHING
Stevens Point
Three Year Intermediate Course.



CHARLOTTE GAUTHIER
Antigo
Three Year Intermediate.

MARY E. GRIFFIN
Manawa
One Year Rural Course.



ERMA R. GROTH
Polar, Wis.
Two Year Intermediate Course.



MILDRED E. GRUEL
Manawa, Wis.
One Year Rural Course.

NORA MAE HARTLINE
Alvin, Wis.
Two Year Intermediate Course.



ANNA MAE HARTMAN
Clintonville, Wis.
Three Year Intermediate Course.

DOROTHY L. HICKEY
Tomahawk, Wis.
Two Year State Graded Course.



LYLA HILL
Stevens Point, Wis.
Two Year Primary Course.

JUNE M. HOCHSTAFEL
Ashland, Wis.
Two Year Intermediate Course.



MARION I. HOLMAN
Stevens Point, Wis.
Three Year Intermediate Course.

GERDA I. JACOBSON
Eland, Wis.
Two Year Intermediate Course.

EMILY JAKEN
Mosinee, Wis.
Two Year Primary Course.

ELSIE M. JENSEN
Sheridan
Two Year State Graded Course.



DOROTHY A. JERRED
Cambria.
Two Year Primary Course.

MARIAN JOHNSON
Pulaski
Two Year State Graded Course.



JAMES JOLIN
Tigerton
Two Year State Graded Course.

REGINA F. KIESLING
Marshfield
Two Year Primary Course.



MARY JANE KELLY
Stevens Point
One Year Rural Course.

HELEN KETTER
Fenwood
Two Year Intermediate Course.



RUTH KJENDALIN
Iola
Two Year Primary Course.

LILA LADWIG
Stevens Point
One Year Rural Course.



LEO W. LANG
Marathon
Two Year State Graded Course.



MABEL LANGE
Wautoma
One Year Grammar Course.

ELENORA LANGE
Marion
One Year Rural Course.



LORETTA LARUE
Pittsville
Two Year Primary Course.

VERONA S. LAU
Marion
Two Year Intermediate Course.



ISADOR S. LEPAK
Marathon
Two Year State Graded Course.

JAMES K. MCGINLEY
Bancroft
Two Year Upper Grade Course.



GLADYS MARSH
Colby
Three Year Intermediate Course.

CAROLINE MARTENS
Unity
One Year Rural Course.



ALICE MARTIN
Withee
Two Year Grammar Course.

LAURA L. MARTIN
Stevens Point
Four Year Intermediate Course. Major: Geography.
Round Table.

WINNIFRED MARX
Stevens Point
Two Year Intermediate Course.



MARCELLA HORNUNG
Unity
One Year Rural Course.

MARION H. PETERSON
Amherst
One Year Rural Course.



ROLAND F. OLLMAN
Pulaski
Two Year State Graded Course.

DERA V. PLOEGER
Antigo
Two Year Primary Course.



MELVIN PFLUM
Tomahawk
Two Year State Graded Course.

DOROTHY E. PIDDE
Manawa
Two Year Primary Course.



EDITH RASSMUSSEN
Mountain
Two Year State Graded Course.

VIOLA ISAACSON
Stevens Point
Four Year State Graded Course.



LYLE FAE RAVEY
Unity
One Year Rural Course.



HELEN T. SAGER
Stevens Point
Four Year Intermediate Course. Major: Geography.
Round Table; Loyola.



JOYCE SHAPE
Merrill
Two Year State Graded Course.



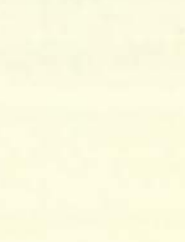
MILDRED SIMONSON
Madison, Minn.
Two Year Intermediate Course.



JANE SMITH
Amherst
Two Year Primary Course.



JANET SOETEBER
Stevens Point
Four Year Primary Course.



STRAUTHER C. SPENCER
Nelma
One Year Rural Course.



DOROTHY STORZBACH
Plainfield
Two Year State Graded Course.



MARGARET TAYLOR
Tomahawk
Two Year Intermediate Course.

ELLEN THORP
Menominee, Mich.
Three Year Intermediate Course.

HERTHA E. TOTZKE
Edgar
Three Year Intermediate Course.

WALTER TREBATOSKI
Stevens Point
Two Year State Graded Course.



LUCILLE E. TWIST
Hancock
Two Year Intermediate Course.

BEULAH M. TURINSKI
Tomahawk
Two Year Intermediate Course.



JOSEPHINE VESLEY
Mosinee
Two Year State Graded Course.

RUTH A. WAGNER
Sheboygan
Three Year State Graded Course.



ERMA WIERSIG
Colby
One Year Rural Course.

DOROTHY M. WILSON
Plainfield
Two Year Primary Course.



MILLCENT M. WILSON
Stevens Point
Three Year Junior High School Course.

EDWIN C. YACH
Stevens Point
Two Year State Graded Course.



LAWRENCE ZALEWSKI
Knowlton
One Year Rural Course.





Bunker, Scheel, McGillivray, Halverson

CLASS OF 1936

President	Leonard Scheel
Vice-President	Helen Bunker
Secretary	Don Halverson
Treasurer	Wilfred McGillivray

The Class of 1936 is making its bid for recognition. In Athletics, Forensics, and Scholarship the class invites you to look at the record.

However, the success of an organization does not depend alone upon the leadership of the few, but also upon the cooperation of the group. And what could show more co-

operation than the success of the 1935 Junior Prom which so completely carried out the theme of "A Rhapsody in Blue."

As we stand on the threshold of our senior year we are determined to make our final year more successful both in producing leaders and in showing cooperation than our first three years at C. S. T. C.



ROW 1—Truesdale, Baird, Eastling, Rodger, MacKenzie, Damon, Houle, Waterman, Wilson, Gething, Wagner.
ROW 2—Smith, Meyer, Skuteley, Boursier, Malesevich, Switzer, Bunker, Piehl, Yerke, Will, Kleist, Bodeen
ROW 3—Okray, Brady, Hubbard, Bretzke, Bremmer, Scribner, Brady, Gruna

JUNIORS



Theisen, Crummey, Hemmey, Torbenson

CLASS OF 1937

President	William Theisen
Vice-President	Eleanor Crummey
Secretary	Arthur Hemmey
Treasurer	Charles Torbenson

The Class of 1937 has endeavored to maintain and further the splendid record it made for itself in its freshman year. It feels that it has done its part to help make this college what it is.

The sophomore class can rightfully point with pride to its achievements. It has proven its worth scholastically. Participating in extra-curricular activities extends through all fields including dramatics, music, athletics and journalism. The class is prominent in the social affairs of the school,

the members being represented in each function of the year. Both King and Queen of the Mardi Gras this year were sophomores. The class members with their widely diversified personalities and interests have contributed whole-heartedly to the advancement of ideas. Loyal cooperation and united efforts have been rewarded by success.

The class as a whole is worthy of recognition and is striving every day to reflect success on itself and its Alma Mater.



ROW 1—Walter, Hanson, Swanson, Hartline, Minton, Doane, Koshollek, Morency, Law, Gaffney, Andre. Row 2—Jensen, Gajewski, Borst, Falkowski, Marx, Turinski, McWilliams, Kissinger, Van Buren, Cotey, Helbach, Murgatroyd, Twist, Vesely. ROW 3—Wojciechowske, Firgins, Leiser, Ollman, Bagriel, Krostue, Lepak, Hotvedt, Lang, Grosnick, Zimmerman.

ROW 1—Arvold, Bassler, Weed, Week, Quen, McVey, Dumbleton, Ballard, Werner, Jerred, Wilson. ROW 2—Alm, Quinne, Kronberg, Frawley, Berard, Diver, McCullouch, Jones, Prussow, Taylor. ROW 3—Champ, Yach, Literski, Maxfield, Davel, Bunnell, Bunker, McGinley, Bassler, Larson



Benson, Bush, Cook, Chartier

CLASS OF 1938

President	Thomas Benson
Vice-President	Raymond Bush
Secretary	Dorothy Cook
Treasurer	Leonard Chartier

Matriculation this fall brought to Central State a selected group of clean-limbed, able-minded frosh. Despite the customary foreboding of the upperclassmen about the deterioration in quality of the incoming class, there was no evidence to support this natural feeling. From the opening day the drive and intelligence of the Freshman class was apparent.

The persistent and coordinated effort of the Frosh in building the colossal homecoming bonfire was a signal contribution to this stirring event. The performance of Benson, Chartier, Bucholz, Lampe and others on the

football squad contributed in no small measure to the 7-0 victory over Oshkosh, which climaxed the day's activity on the gridiron. The simple, sweet, merry-footed presence of the Freshman girls at the homecoming dance, also did much to enhance the gaiety of the ball.

The class, besides supporting numerous other social events of the college, staged and successfully financed a Freshman party. The fine esprit de corps gained from this party will be a factor in the unity and future progress of this group.



ROW 1—Luedtke, Murphy, Marshall, Earl, Stauffacher, Koch, Veeder, Stauffer, Crab, Ladwig, Bentz, Greunke. ROW 2—Ziechert, Eskrit, Allen, Steff, Nelson, Davidson, Reedal, Richards, McDonald, Hazen, Griffin, Weber, Wiersig. ROW 3—Mockoben, Duggan, Caskey, Whipple, Beranek, Eyler, Abrahamson, White, Dregne, Atwood, Sudmeier.

ROW 1—Kulanich, Mullarkey, Dopp, Graham, Schofield, Rieley, Brady, Livingston, Konecny, Farley, Flagar. ROW 2—Stevens, Odegard, Redemann, Mauel, Knutzen, Christenson, Hoff, Beggs, Brock. ROW 3—Seefeldt, Schneider, Dagneau, Szymanski, Vetter, McAllen, Wickman, Burch, Andre, Hartvig, Ernst.

ROW 1—Tylk, Tinley, Werner, Trinud, Gruel, Mainland, Walker, Davies, Blake, Joosten, Scott, Pagenkoff. ROW 2—Anderson, Goetch, Warbleton, Schewe, Kelley, Croker, Butler, Bader, Peterson, Kruger, Watson, Smith, Morgan. ROW 3—Hager, Chartier, Malchow, Dent, Majewski, Brooks, Lund, Brady, Haas, Carmody, Laschkewitsch.

ROW 1—Erickson, Ebeling, Knitter, Lange, Adsit, Walsh, Baierl, Boger, Mollen, Kushman, Keel. ROW 2—Rice, Peterson, Cram, Yakers, Onan, Walsh, Larson, Cook, Erickson, Gilbertson, Lambert, Jensen. ROW 3—Welch, Westfahl, Bachmann, Groves, Dehlinger, Bawker, Cartmill, Koehl, Totske, Hickok, Thompson.

A student recently said, "I shall never see, eat or smell an eskimo pie without thinking of the S club." This person was much impressed by just one of this club's many activities. Other students will think of the S club dance, and perhaps those real S club initiations.

This group has always in the past been a rather loosely organized group. This year, however, they have reorganized, and have enjoyed increased activity because of their

organization. The club is now operating under a constitution, and has definite objectives.

Coach Kotal can tell you that these men are behind every move that will benefit Central State's athletics and all its other activities.

Membership is gained only through winning a letter in some major athletic competition. Every Central State athlete strives for membership in this popular group.

THE "S" CLUB

PresidentRichard Schwahn

Secretary-TreasurerFrank Klement

ROW 1—Gregory, Beppler, Krumm, Murray, Schwahn, Dagneau, Broome, Zurfluh, Klement.
 ROW 2—McGuire, Steiner, Olson, Scribner, Roy, Fritch, F. Menzel, Bucholtz.
 ROW 3—Chartier, Benson, Anderson, Slotwinski, Urbans, Sparhawk, Berard, Collins, Dumphy.



ATHLETICS



COACH KOTAL



ASST. COACH SCHWAHN

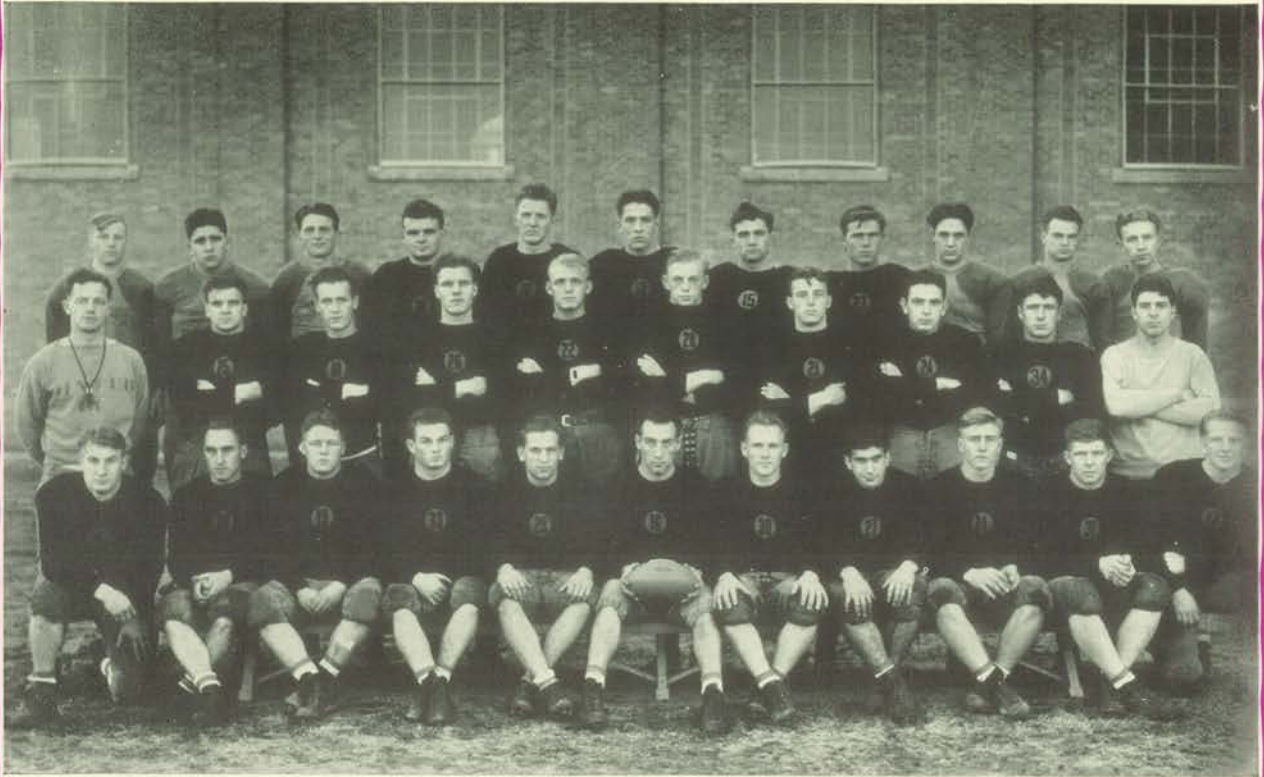
A university coach in a teachers college. Championships seem to be a habit with Eddie. Since his arrival here, the second semester of 1930, he has turned out four championship aggregations, two in football, 1933 and 1934, and two in basketball, 1933 and 1935. In addition to this he has developed several track men of championship calibre. How can he help but produce winners? He has every quality required, a personality second to none, a will to win, the ability to procure every available ounce of fight of his men.



CAPTAIN BECKER

Richard ("Dick") Schwahn, last year's assistant coach on the championship grid squad, has taken part in four years of sports activity. He won his first letter in '31, another in '32, and in '33 he served as end and captain of that year's champion eleven, being unanimously chosen for that position on the conference coach's honorary eleven. During the past year Dick served as president of the "S" Club, membership in which is restricted to winners of college letters at Central State, and as sports editor of the "Iris."

OUR OWN ALL-AMERICAN. Warren Becker finished his last season of competition midst a halo of glory. Chosen on the Coaches All-Conference eleven for three consecutive years; unanimous choice for the captaincy of the championship '34 eleven; quarterback on every all-opponent team; and to round things off "Beck" was chosen by a picked committee as quarterback on the All-Time mythical eleven of this college. "Beck's" value was also recognized by experts in the game, as he is to be given a try-out with the Chicago Bears, World's Professional Football Champs, next fall.



FRONT ROW—Murray, Beppler, McDonald, Zurfluh, Unferth, Capt. Becker, Bucholtz, Dagneau, Olson, Pophal, Chartier.
 SECOND ROW—Coach Kotal, Fritsch, McGuire, Weingartner, Benson, Copes, Menzel, Broome, Slotwinski, Schwahn, Ass't Coach.
 THIRD ROW—Benke, Schmeling, Burch, T. Menzel, Anderson, Berard, Sparhawk, Bruno, Slotwinski, Peavy, Schmidt, Krehnke.

CHAMPIONS 1935

CAPT.-ELECT MENZEL



Tackle for the last two championship seasons, Ted has the record of having played more than any other player on the squad. He was the conference coaches unanimous choice for tackle position in both years. His team mates unanimously elected him their captain next year. GOOD LUCK, TED. LET'S COP THE PENNANT AGAIN!

RON H. MURRAY



Ron ended his football career at Central State in a blaze of triumph, having been a member of two championship teams and the coaches' choice for All-Conference halfback his last year. "Murph" was considered the best open-field runner in the conference. Ron played his high school ball at Gladstone, Mich., gaining All-Upper Peninsula honors.



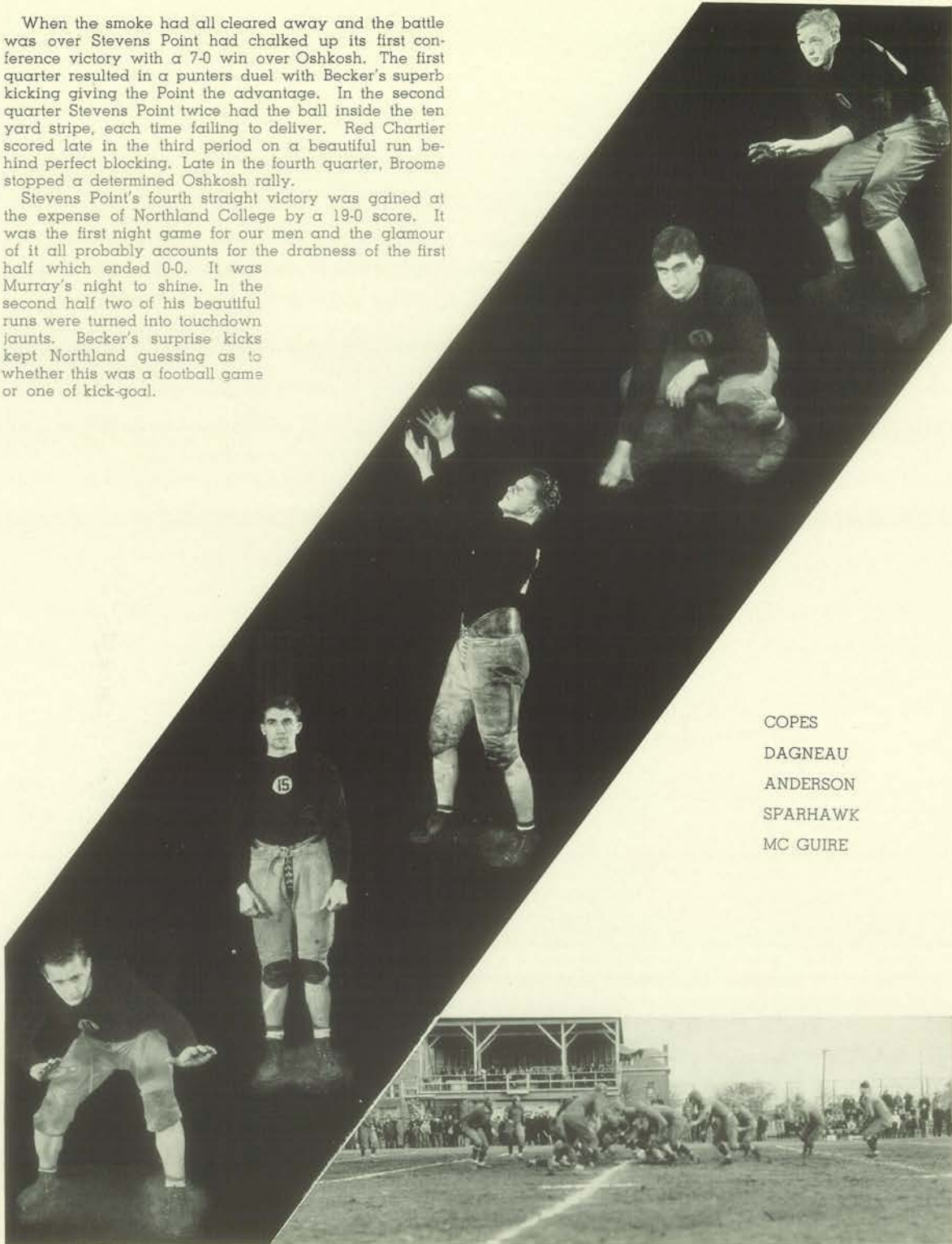
Stevens Point 7—St. Cloud 6 read the score cards after Coach Kotal's warriors had turned in their first sixty minutes of game play this year. St. Cloud presented a strong aggregation representing last year's undefeated Minnesota State Teachers College champions. The two teams were about evenly matched. Capt. Becker's talented toe accounting for the difference. St. Cloud tallied first about the middle of the second quarter. In the third quarter a beautiful ninety-two yard punt by Becker paved the way for the Point's seven points.

In the first home game of the season the Pointers defeated the La Crosse gridders 7-0 for their second straight non-conference victory. La Crosse, like St. Cloud, had things much their own way during the first half, costly fumbles preventing their scoring. Stevens Point coming back strong the second half, scored early in the third quarter. Murray started the parade with a beautiful return of a La Crosse punt. Becker, Murray, and Fritsch, aided by perfect blocking, then carried the ball within scoring distance. "Beck" crossed the last stripe.

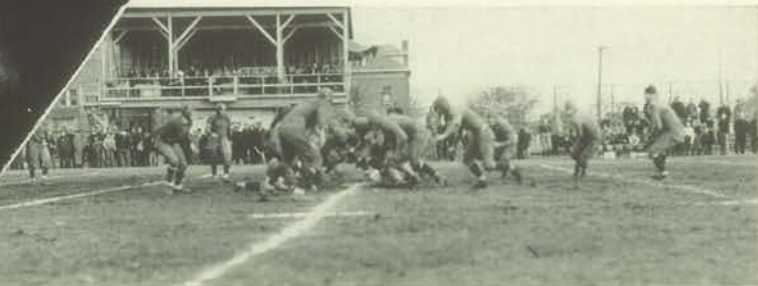
BROOME
 BUCHOLTZ
 B. SLOTWINSKI
 UNFERTH
 BERARD

When the smoke had all cleared away and the battle was over Stevens Point had chalked up its first conference victory with a 7-0 win over Oshkosh. The first quarter resulted in a punters duel with Becker's superb kicking giving the Point the advantage. In the second quarter Stevens Point twice had the ball inside the ten yard stripe, each time failing to deliver. Red Chartier scored late in the third period on a beautiful run behind perfect blocking. Late in the fourth quarter, Broome stopped a determined Oshkosh rally.

Stevens Point's fourth straight victory was gained at the expense of Northland College by a 19-0 score. It was the first night game for our men and the glamour of it all probably accounts for the drabness of the first half which ended 0-0. It was Murray's night to shine. In the second half two of his beautiful runs were turned into touchdown jaunts. Becker's surprise kicks kept Northland guessing as to whether this was a football game or one of kick-goal.

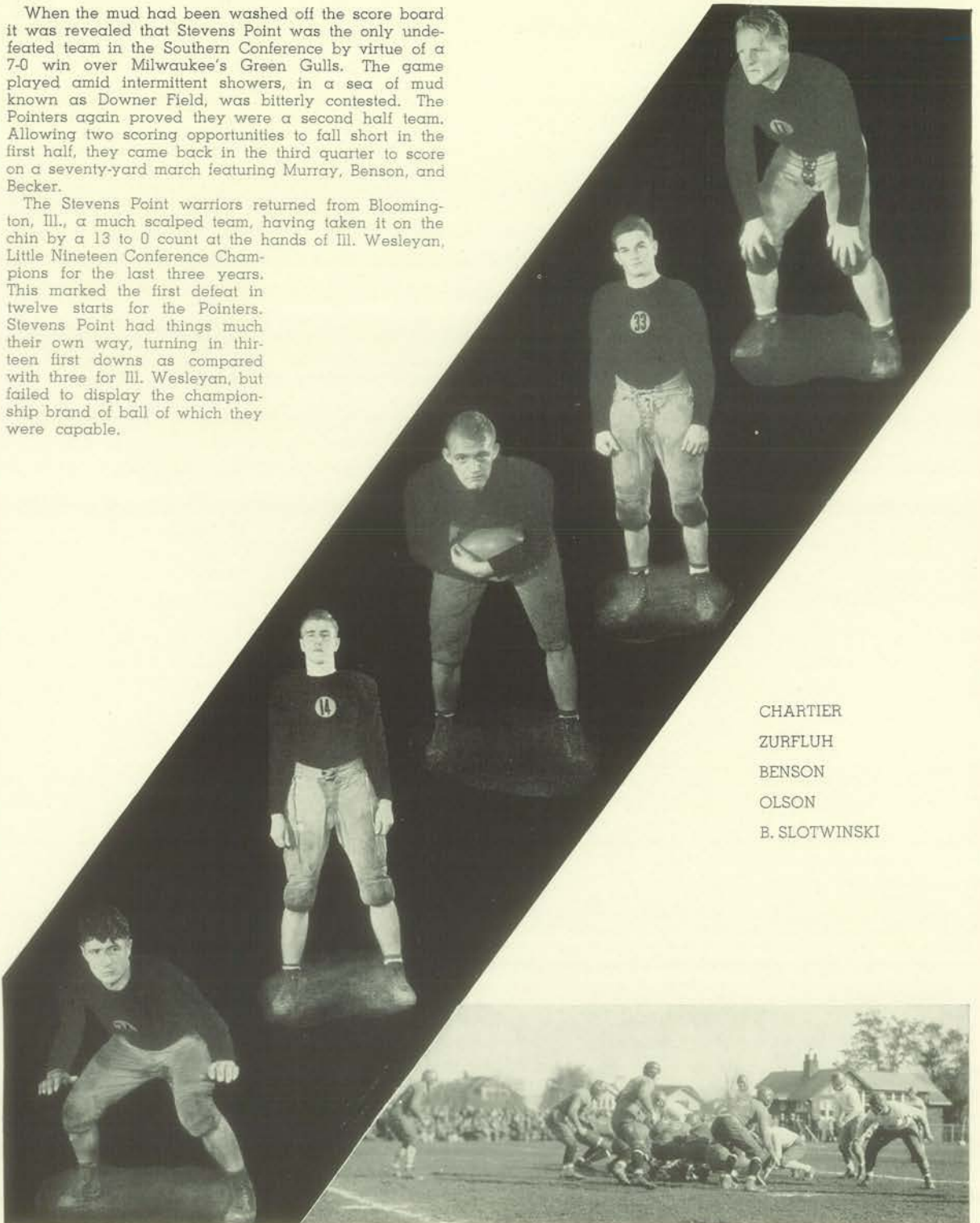


COPES
 DAGNEAU
 ANDERSON
 SPARHAWK
 MC GUIRE



When the mud had been washed off the score board it was revealed that Stevens Point was the only undefeated team in the Southern Conference by virtue of a 7-0 win over Milwaukee's Green Gulls. The game played amid intermittent showers, in a sea of mud known as Downer Field, was bitterly contested. The Pointers again proved they were a second half team. Allowing two scoring opportunities to fall short in the first half, they came back in the third quarter to score on a seventy-yard march featuring Murray, Benson, and Becker.

The Stevens Point warriors returned from Bloomington, Ill., a much scalped team, having taken it on the chin by a 13 to 0 count at the hands of Ill. Wesleyan, Little Nineteen Conference Champions for the last three years. This marked the first defeat in twelve starts for the Pointers. Stevens Point had things much their own way, turning in thirteen first downs as compared with three for Ill. Wesleyan, but failed to display the championship brand of ball of which they were capable.



CHARTIER
 ZURFLUH
 BENSON
 OLSON
 B. SLOTWINSKI

Whitewater was the recipient of a 2 to 0 licking administered by the championship bound Pointers, on a field that made the Downer Field at Milwaukee resemble the Sahara Desert. Playing in a continuous downpour and without the services of Capt. Becker, who had suffered an eye injury the previous week, Stevens Point chalked up its third straight conference victory. Inclement weather prevented the Point from running up a much larger score. A highlight of the game was Frank Menzel's dive between a Whitewater man's legs to recover a fumble.

With the game ending 14 to 6, Stevens Point chalked up its second successive conference championship with its highest score of the season. This was the first time

that a team representing this institution had won two successive football titles. To Platteville, who presented an effective running attack, goes the honor of being the first conference team to score on the Pointers this year. Four men, Anderson, Becker, Fritsch, and Murray donned the Purple and Gold moleskins for the last time and ended their collegiate careers mid the glories of triumph.

MC DONALD
 BEPLER
 MENZEL
 WIENGARTNER
 FRITSCH



BASKETBALL

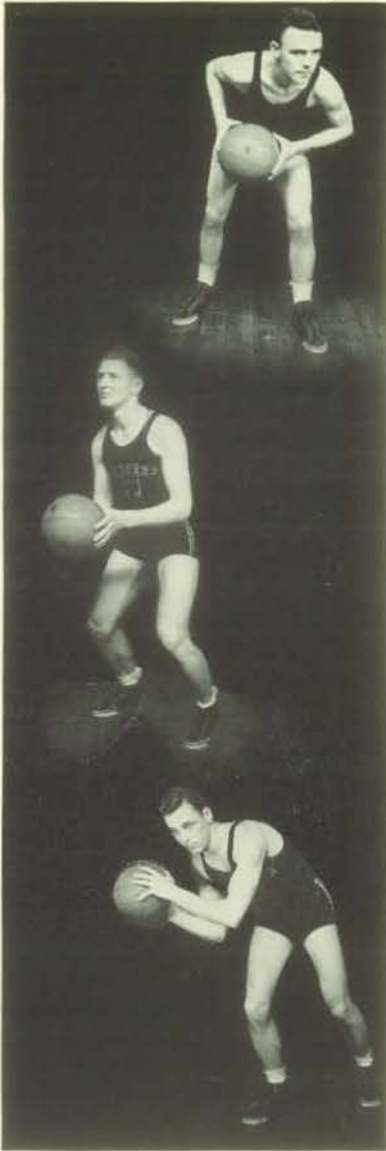


TOP ROW—(Left to Right) Don Johnston, Frank Gordon, John Collins, Oscar Copes, Chester Rinka, Earl Eckerson. FIRST ROW—Monroe Brown, Robert Weinbauer, Milton Anderson, Capt. "Jug" Marsh, Guy Krumm, Donald Unferth, Asher Shorey.

CHAMPIONS 1935

With the moleskins scarcely packed away mid the fragrant odor of moth balls it was Coach Eddie's task to scare up a basketball team that would start the state talking. With the return of seven letter men led by Captain Marsh plus the new material of whom the most promising were Rinka and Gordon of Stevens Point; Johnston of Appleton; Weinbauer, Wis. Rapids; and Copes of Tomahawk, his chief difficulty was not to uncover material but to pick one formidable five.

Various combinations were tried and it was not until after his first conference game that Eddie decided upon a definite unit. Before the regular conference season got under way the gang partook in seven non-conference games, including among their victims the Alumni, who were defeated twice; the Rebels; the Appleton Sport Shops; the Merrill City team; Point High School; and the 1932 Champions.

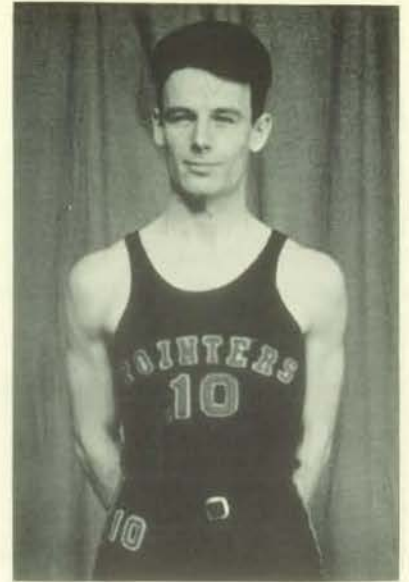


WEINBAUER

ANDERSON

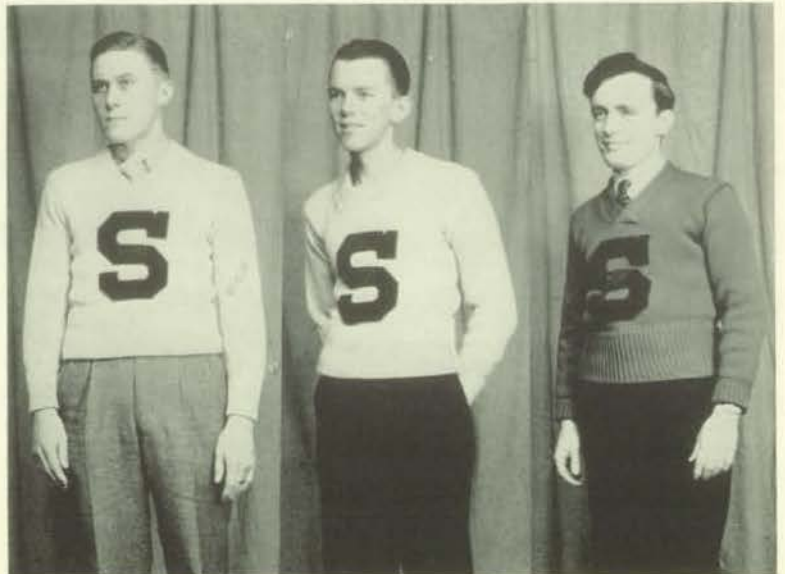
GORDON

MANAGERS
MCGILLIVRAY
URBANS
DUMPHY



CAPT. MARSH

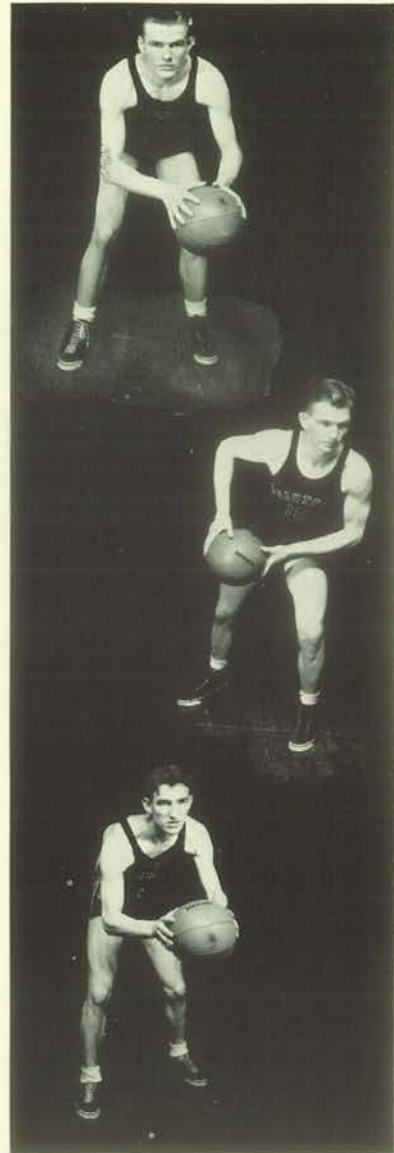
BASKETBALL





"NOOKIE" ECKERSON

RINKA



JOHNSTON

KRUMM

CO-CAPTAINS ELECT

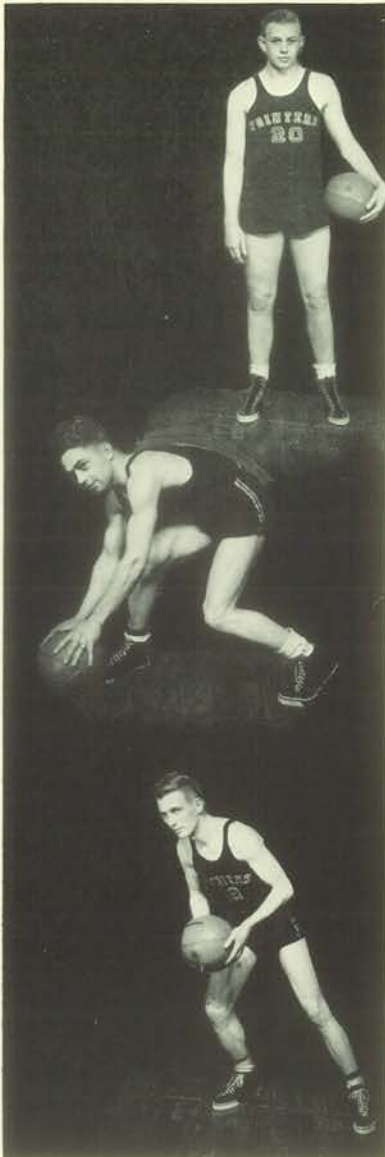
COLLINS



UNFERTH



BASKETBALL



COPEs

SHOREY

BROWN

CHAMPIONS AGAIN! The 1935 basketball team came through to give Coach Kotal another basketball championship and to run his string of winning athletic teams to four.

This year's five presented one of the smoothest working ball clubs ever to have graced our hard court, setting an enviable record, losing only two games out of a total of twenty. One of these games was a post-season encounter with Superior in which the boys showed a marked let-down from their usual style of ball. The other was suffered at the hands of Milwaukee Teachers on the Green Gull's home floor. The Pointers numbered among their victims La Crosse Teachers College, co-champions of the Northern Division.

The services of Capt. Marsh, Krumm and Anderson will be greatly missed next year. They have played sterling ball for the Purple and Gold.

For next years success we rely on Co-Captains Unferth and Collins to annex another crown.

ASSISTANT COACH GREGORY



BASKETBALL

BASKETBALL

Stevens Point 32.....	Eau Claire 16
Stevens Point 38.....	Milwaukee 25
Stevens Point 33.....	Milwaukee 42
Stevens Point 42.....	Whitewater 30
Stevens Point 40.....	Oshkosh 31
Stevens Point 27.....	Whitewater 24
Stevens Point 40.....	Plateville 32
Stevens Point 27.....	Oshkosh 26
Stevens Point 34.....	Plateville 28
Stevens Point 31.....	La Crosse 25
Stevens Point 31.....	Superior 38

"B" SQUAD

ROW 1—Bassler, McAllen, Speith
 ROW 2—Coach Gregory, Hartwig, Christensen, Westfal



SOUTHERN DIVISION

	W.	L.	T.	Pct.
Stevens Point	4	0	0	1.000
Milwaukee	3	1	0	.750
Whitewater	2	0	0	.500
Oshkosh	1	3	0	.250
Platteville	0	4	0	.000

NORTHERN DIVISION

	W.	L.	T.	Pct.
La Crosse	3	0	1	1.000
River Falls	3	1	0	.750
Superior	1	1	2	.500
Eau Claire	1	3	1	.250
Stout	0	4	0	.000

FOOTBALL

BASKETBALL

Stevens Point	7	1	0	.877
Milwaukee	5	3	0	.625
Oshkosh	4	4	0	.500
Platteville	3	5	0	.375
Whitewater	1	7	0	.125
Superior	6	2	0	.750
La Crosse	6	2	0	.750
River Falls	5	3	0	.625
Eau Claire	3	5	0	.275
Stout	0	8	0	.000

COACHES' ALL-STAR TEAMS

FOOTBALL

ENDS:

Stoegbauer—Oshkosh
Lautenschlager—Oshkosh

TACKLES:

Menzel—Stevens Point
Flaherty—Milwaukee

GUARDS:

Sparhawk—Stevens Point
Braun—Milwaukee

CENTER:

Broome—Stevens Point

HALFBACKS:

Murray—Stevens Point
Rose—Platteville
Messman—Whitewater

FULLBACK:

Karpowitz—Milwaukee

QUARTERBACK:

Becker—Stevens Point

BASKETBALL

FORWARDS:

Eckerson—Stevens Point
Unferth—Stevens Point
Rheel—Platteville
Poulette—Oshkosh

CENTERS:

Rhemdstedt—Platteville
Wereblow—Whitewater

GUARDS:

Johnston—Stevens Point
Marsh—Stevens Point
Montague—Oshkosh
Humke—Milwaukee



SPARHAWK, KLEMENT, BERARD, STEINER

TRACK 1934

With football and basketball things of the past, it was up to the men with winged feet and Herculean strength to show their prowess. The first opportunity Coach Kotal had to view his hopefuls was the Inter-class track meet with which the Freshman proceeded to romp away. Webb, Berard, a sophomore, stole individual honors with five firsts and as many seconds. Out of the mass Coach Kotal managed to disentangle seven men who were to bring Central State further laurels. The chosen men and their specialties were: Fritsch and Sparhawk, weights; Klement, javelin, Steiner, pole vault, Abel, high jump;

CO-CAPTAIN
FRITCH



Scribner, distance runs; and Berard, dashes and hurdles.

Their first test was the quadrangular meet between Stevens Point, Whitewater, Milwaukee and Oshkosh, which was sponsored by the Milwaukee Teachers College. The Point fared well, placing five firsts and as many runners-up to take second in the meet.

The next contest was a triangular meet between Oshkosh, Whitewater, and Stevens Point, held at Whitewater, where the Pointers proved their winning complex by running away with the meet, copping six firsts and placing in every event.

CO-CAPTAIN
SCRIBNER



S AWARDS

Class '35

FOOTBALL

R. Beppler, M. Fritsch, M. Anderson

BASKETBALL

G. Krumm, W. Marsh

TRACK

L. Scribner, F. Klement, M. Fritsch

Class '36

FOOTBALL

W. Becker, R. Murray, D. Unferth, A. Zurfluh,
C. McDonald, F. Menzel, W. Berard

BASKETBALL

D. Unferth

TRACK

D. Abel, W. Berard, R. Steiner

Class '37

FOOTBALL

J. McGuire, O. Copes, Ben Slotwinski, R. Broome,
T. Menzel, Bruno Slotwinski, C. Sparhawk

BASKETBALL

E. Eckerson, J. Collins

TRACK

C. Sparhawk

Class '38

FOOTBALL

A. Buckholtz, T. Benson, W. Dagneau, E. Olsen,
R. Weingartner, L. Chartier

BASKETBALL

C. Rinka, R. Weinbauer, D. Johnson

3-Letter Men

W. Becker, M. Anderson, G. Krumm, W. Marsh,
R. Murray, R. Beppler

6-LETTER MEN

M. Fritsch

PROFESSIONAL





MISS ALLEN

ALICE VAN ADESTINE
President

ELMIRA BLECHA
Secretary

SADIE KLIMEK
Treasurer

The Home Economics Club is the professional organization of the Home Economics department. The Club meets twice a month. One meeting is a business meeting; the other is set aside for a social gathering. Some of the interesting programs presented to the girls this year include a talk by Miss Florence Glennon on her trip to Europe, a demonstration on lighting by Miss Patterson, and an interesting account of the new nursery school project by Miss Frances Rodger. The Club also participated in the All-School Parents' Day this fall. This Club offers the students an opportunity to broaden their knowledge professionally and socially.

HOME ECONOMICS CLUB



ROW 1—Schwahn, Skutley, Fulton, Malesevitch, Goggins, Van Adestine, Sparks, Klimeck, Blecha, Samson
ROW 2—Anderson, Houle, Switzer, Meyer, Bunker, Guelle, Farney, Van Vuren, Heuer
ROW 3—Torke, Eastling, Warekois, Minton, Hoyer, Keen, Ostwald

PROFESSIONAL CLUBS



MISS COLEMAN

DERA PLEOGER
President
VENTURA BAIRD
Vice President
DOROTHY JERRED
Secretary
HELEN BRADY
Treasurer
SUSAN E. COLMAN
Director

The Primary Department of Central State Teachers College aims to provide skilled teachers for children. The four-year curriculum, leading to the degree of Bachelor of Education, is offered. Miss Susan E. Colman leads this division of the college.

Life begins at birth and not upon graduation from arbitrary levels in the school system. The activity of the school child is not a preparation for life, so much as it is actual present living. In the Primary Department the pupil is considered as a little citizen. His opportunities and responsibilities are pre-

sented to him in the conviction that painstaking attention to his needs will be worth while. The student teachers attempt to combine the critical disinterestedness of scholarship with a warm human interest in the child's welfare and progress.

The Primary Council, meeting the first Monday of the month, is the social and professional club of all primary division students. It has been the privilege of the club to foster good fellowship and interest in the solution of teaching problems in the atmosphere of life outside the classroom.

PRIMARY COUNCIL



First Picture

ROW 1—Caskey, Wind, Grunke, Murgatroyd, Krepske, Brady, Rosenow, Krueger

ROW 2—Nelson, Schnick, Becker, Richardson, Davies, Bassler, Turrish, Weed

ROW 3—Wahoviak, Mularkey, Larson, Walsh, Beggs, Hornung, Warbleton

Second Picture

ROW 1—Kussman, Gilbertson, Olson, Ploeger, Colman, Bleck, Curran, Johnson, Keisling

ROW 2—Werner, Jerred, Wilson, Marsh, Bader, Peterson, Baird, Earle, Mavel

ROW 3—Butter, Pagenkopf, Stefl, Blake, Kendal, La Roux, Nelson, Pidde

PROFESSIONAL CLUBS



MR. NEALE

OFFICERS

	First Semester	Second Semester
President.....	ROBERT NEALE	MELVIN PFLUM
Vice President.....	RUTH WAGNER	STRAUTHER SPENCER
Secretary.....	MAXINE OLDENBURG	HELEN COTEY
Treasurer.....	RAYMOND GROSNICK	ETHEL HOFF

The Club has been active continually since its organization in the fall of 1915.

It has for its purpose the developing and fostering of interest in the rural life among those who enroll in the Department of Rural-State Graded Education.

Meetings are held in the Rural Assembly on the first and third Monday evenings of each month.

Membership is automatic upon enrollment in the department.

"Rural Life" is a member of The American Country Life Association, which is a national organization aiming "to dignify rural life, to promote interest in it and to create the right

kind of sentiment for it, thereby to develop in the hearts of students an appreciation of the advantages and the disadvantages of life in the country."

Robert L. Neale, president of "Rural Life" the first semester of 1934-35, attended the national meeting of The American Country Life Association which was held in Washington, D. C., in November. He acted as delegate from the local organization.

A large group from "Rural Life" attended the third Wisconsin Country Life Conference, held in Madison on May 11. The University Country Life Clubs acted as host to more than five hundred delegates from various groups in the state.

RURAL LIFE CLUB



First Picture—

ROW 1—Neale, Storzbach, Round, Timm, Kennedy, Koch, Wiersig, Konecny, Simonis, Buchanan. ROW 2—Bell, Strike, Ballard, Ravey, Hoff, Bennett, Davidson, Rassmussen, Kniter, Cornwell, Golke. ROW 3—Busse, Cunningham, Kelly, Hornung, Wojt, McMillen, Ollman, Carmody, Laschkewitsch, Lang, Ramaker, Sudmeier.

Second Picture—

ROW 1—Cauley, Maney, Schofield, Wiora, Meyer, Ogg, Wagner, Grab, Anderson, Eskritt. ROW 2—Trinrud, Schewe, Yokers, Onan Warden Adsit, Lange, Martens, Densch, Coleman, Pekarskey. ROW 3—Zimmerman, Williams, Grosnick, Yach, Koppa, Trebatoski, Vetter, Szymanski, Davel, Wickman, Zalewski.

Third Picture

ROW 1—Kukanick, Croker, Doane, Oberst, Ebeling, La Vigne, Roach, Brooks, Isaacson. ROW 2—Tutt, Whipple, Steinke, Griffin, Cotey, Dickett, Lund, Simonis. ROW 3—Stewart, Wojciechowski, Pflum, Lepak, Rice, Spencer, Albert.



MR. SMITH

ARBA SHOREY

President

FRANK KLEMENT

Vice-President

BONITA NEWBY

Secretary and Treasurer

The Forum is a professional organization for all students in the division of secondary education.

All students fulfill the requirements set by the North Central Association of Colleges and Secondary Schools and the University of Wisconsin. That means that each graduate has graduate rating and is recognized by the leading universities in the country.

The director of the department, Mr. E. T. Smith, and his associates, Mr. R. M. Rightsell, and Mr. W. H. Glover, have given personal guidance to students in selecting their

majors and minors in the academic field.

The avowed policy of Forum has been to cultivate, here in college, an interest in the attitudes, habits, and pedagogical ethics required by the active teacher. The consideration of actual and potential difficulties by the club personnel, advised by the faculty, have dispelled many perplexities besetting the young teacher before they arise.

The integration of intellectual and social enterprise marks Forum's contribution to Central State Teachers College.

THE FORUM



FIRST ROW—Dallich, Scribner, Pophal, Copes, Theisen, Urbans, Bremmer, Scribner. SECOND ROW—Larson, Westphal, Hanson, Steiner, Sorbye, Schroeder, Sturm, Gruna. THIRD ROW—Fonstad, Burch, Flowers, Brunker, Thompson, Bunnell, Leiser, Madeaben.

Second Picture—

FIRST ROW—Livingston, Erickson, Morgan, Smith, Murphy, Gaffney, Erdman, Erickson, Allen, Keil, Stauffer. SECOND ROW—Kilmer, McGillivray, Shorey, Malchow, Murray, Schwahn, Swanson, Plan, Cartmill, Butenhoff, Collins. THIRD ROW—Scheel, Krumm, Bretzke, Brady, Scribner, Schultpelz, Ernst, Fergens, Dregne, Atwood, Winch.

Third Picture—

FIRST ROW—Flugour, Farley, Mainland, Pfiffner, Rodger, MacKenzie, Kleist, Owen, Andre, Richards, Stauffacher. SECOND ROW—Brady, Odegard, Hazen, Weber, McDonald, Damon Jones, McCulloch, Mullarkey, Iverson, Falkowski. THIRD ROW—McDonald, Krehnke, Walter, Bachmann, McAllen, Olson, Reedal, Gajewski, Perrodin, Frantz.



MR. WATSON

PresidentEllen Thorp
Vice-PresidentVirginia Watson
TreasurerFloyd Cummings

The Grammar Round Table under the supervision of the director, Mr. Watson, has achieved its objective for the year. Under the rules of the club charter, all members of the Grammar Department are enrolled on the Grammar Club membership scroll. Monthly meetings, held throughout the school year, have been, in effect, a fellowship in learning.

True to the traditions of King Arthur's Knights of the Table Round, the club personnel has not infrequently brought home the bacon. Clad in the livery of the Grammar

organization, the code babies and the brain trusters float took first prize in the Homecoming parade.

The members of this club have been actively participating in athletics, forensics, dramatics, and other extra-curricular activities during the school year.

The placement percent for its last years graduates was high and we hope to better our own record this year. We believe that the superintendents employing teachers are interested in the all-around development this club offers to its membership.

GRAMMAR ROUND TABLE



ROW 1—Cummings, Diver, Gething, Wilson, Mr. Watson, Schmidt, Walterbach, Colbourne, McGinley. ROW 2—Taylor, Clark, Watson, Cook, Crocker, Cowan, Bellman, Bramstead, Chown, Hartline, Bortz. ROW 3—Cram, Brown, Wind, Sparks, DeKeyser, Leuthenstrom, Kronberg, Blendel, Duckett, Jacobson, Hubbard.

ROW 1—Crummey, Brys, Martin, Hockstaff, Kjendalin, Schleicher, Haarsch, Johnson, Lambert, Twist. ROW 2—Waterman, Turzinski, Taylor, Frawley, Johnson, Prusso, Lau, Frawley, Jakin. ROW 3—Holman, Totzke, Werner, Smith, Knutson, Boger, Smith Dehorn, Murdock.



FIRST ROW—Turrish, Knope, Newby, Kalisky, Davis, Damon, Murgatroyd.
 SECOND ROW—Ogg, Steiner, Perrodin, Burroughs

SIGMA TAU DELTA

OFFICERS

PresidentBonita Newby
 SecretaryJean Lynn
 TreasurerMargaret Turrish

MEMBERSHIP

Arba Shorey
Gladys Boursier
Aaron Mannis
Floyd Cummings
Virginia Gajeuski
Jeanette Beggs
Florence Knope
George Simonson
Robert Steiner
Bonita Newby
Margaret Turrish
Jean Lynn
Mae Kallsky

PSI BETA CHAPTER

The Psi Beta Chapter, the forty-seventh chapter of Sigma Tau Delta, National Honorary Fraternity for English students, was organized at Central States on April 2, 1930. There are at present seventy similar chapters in the United States. The purpose of this fraternity is to advance the study of the chief literary masterpieces, to encourage worthwhile reading, to promote the mastery of written expression, and to foster the spirit of fellowship among students specializing in English.

Upon the basis of scholastic excellence and literary merit, new members were elected at the beginning of each semester. Appropriate informal and formal initiations were held. Banquets were held in November and March in connection with these services. The annual joint banquet with the Margaret Ashmun Club, given in honor of the graduates, took place in May, adding to and completing the social and educational activities of the year.

HONORARY ENGLISH



FIRST ROW—Meston, Skarwesky, Dallich, Keen, Goggins, Klmeck, Blecha, Iverson
 SECOND ROW—C. Scribner, Neff, Perrodin, Maxfield, Steiner, Emery, Neale, Allen
 THIRD ROW—Ruh, Flatly, Kujath, R. Schwahn, Tutt, Hoeffler, Rogers

SIGMA ZETA

Master Scientist.....Richard Schwahn
 Vice Master Scientist.....Robert Neale
 Recorder-TreasurerRoberta Sparks

ACTIVE MEMBERS

BESSIE M. ALLEN
CHARLES C. EVANS
JESSIE JONES
HELEN MESTON
BURTON R. PIERCE
R. M. RIGHTSSELL
T. A. ROGERS
R. J. SCHMEECKLE
V. E. THOMPSON
C. F. WATSON
EMILY WILSON
YVONNE DALLICH
ELMIRA BLECKA
ROBERT EMERY
EARL HOFFLER
ANN FARNEY
LEO FLATELY
MAGADELINE GOGGINS
MARGUERITE GROVES
THYRZA IVERSON
CAROL KEEN
FRANK KLEMENT
SADIE KLEMICK
HOWARD KUJATH
FRANK MENZEL
ROBERT NEALE
RONALD NEFF
SOPHIA NICOLAZZO
ALEX PERRODIN
ELMER RUEH
ELIZABETH SANSUM
RICHARD SCHWAHN
CHARLES SCRIBNER
ROBERTA SPARKS
ROBERT STEINER
NORMA TRUESDALE
ENO TUTT

ASSOCIATE MEMBERS

WILLARD HANSON
JEAN MAILER
JACK MAXFIELD
ANITA McVEY
MAXINE MINER
HAROLD SNYDER
WILLIAM THEISEN
FERN VAN BUREN
FAY YERKE



The Zeta Chapter of Sigma Zeta was installed at Central State in 1930.

Students majoring or minoring in any science, and who hold high averages in all their studies are eligible for election to membership.

During this year many interesting and varied programs were presented. These programs are conducted by practicing professional men of science and the active members of the society.

Sigma Zeta donated a placque to the college in 1934. The names of the students presenting the worthiest research projects are engraved upon it each year. The 1934 award was made to Robert L. Neale, who presented a thesis, "The Enrichment of Science Teaching," which was based upon extensive researches carried on by him.

The national conclave was held at Alton, Illinois, where the Alpha Chapter is located. Zeta was represented by six delegates.

ZETA CHAPTER



FIRST ROW—Steiner, Boursier, Bellman, Knope, Iverson, Newby, Joy, Perrodin
 SECOND ROW—M. Turrish, Murgatroyd, Klement, Lynn, Marcoux

MARGARET ASHMUN CLUB

OFFICERS

PresidentThyrza Iverson
 Vice-PresidentJack Ogg
 Secretary-TreasurerMae Kalisky

MEMBERSHIP

GLADYS BOURSIER
EARL HOFFLER
THYRZA IVERSON
BARBARA JOY
MAE KALISKY
FRANK KLEMENT
FLORENCE KNOPE
DOROTHY LAVINE
JEAN LYNN
GENEVIEVE MARCOUX
VERNA MICHAELS
MARION MURGATROYD
BONITA NEWBY
JACK OGG
ALEX PERRODIN
GEORGE SIMONSON

HONORARY ENGLISH

MARGARET ASHMUN CLUB

This year the Margaret Ashmun Club has proven itself more than ever before to be a valuable asset to the college. One of its principal activities has been the operation of a class in Parliamentary procedure. The officers of the other organizations of the college were invited to attend this class. Miss Bessie M. Allen presented and directed the various phases of it.

Another very interesting phase of its work has been its short story contest. This contest, planned for encouraging original writing on the part of all college students, was judged by the faculty members of the English department: Mr. Jenkins, Mr. Knutzen, Mr. Burroughs, and Miss Colman.

Admission to the club is based upon scholastic attainment. Those entering the club must present some original piece of writing. This is intended to stimulate individual composition. The club closes its year with Sigma Tau Delta in a joint banquet.



FIRST ROW—Schwahn, Shorey, Emery
 SECOND ROW—Koske, F. Gordon, D. Gordon

B L O C

The General Discussion Group

PHILOSOPHY ECONOMICS GOVERNMENT SOCIETY

CHAIRMEN

First SemesterArba Shorey
 Second SemesterWilson Schwahn

Mutual agreement, rather than a constitution and by-laws, has bound a carefully selected and limited number of men students to the ideal principles of Bloc since its organization. Bi-monthly meetings in private homes are occupied by intensive study and individual expression on government, ethics, and current controversial topics. Men, promi-

nent both nationally and locally have participated in the closed discussions. Some of the men who have been guests of Bloc during the past year are U. S. Senator Robert M. La Follette, Jr., Congressman Gerald J. Boileau, John J. Jardine, Captain J. A. Chase, Rev. Schwemmer.

RELIGIOUS GROUPS





FIRST ROW—Roach, H. Blake, Rev. Tomczyk, Urbans, Murphy, Cotey
 SECOND ROW—McGinley, Harsch, Turinski, Hochstall, Frawley, Walsheski,
 Taylor, Duckett, Thompson
 THIRD ROW—Brunker, Gajewski, Jakin, Pfeiffer, Luethenstrom, DeKayser, Taylor, Frawley, Klement

THE LOYOLA CLUB

- PresidentsPhilip Kunderger, Ray Urbans
 Vice-PresidentJoseph Pfiffner
 SecretaryLillian Frawley

The club, an organization for Catholic students, was organized in 1917. Its purpose is to keep up an interest in study along religious lines and to provide an opportunity for social life among its members.

Meetings are held on the first and third Wednesday evenings of each month. Pro-

grams featuring the presentation and discussion of some phase of religious thought are carried out. Pastors of nearby parishes and prominent laymen assist in these projects and provision is made for active participation on the part of student members.



The Central State YW is ancient in the tradition of the college. It is a member of the Y.W.C.A. of the United States and a participant in the World's Christian Federation. The cooperation of the churches of the city has always been stimulating to the interest and effectiveness of the group. It is a fine spirit they have shown in taking the Freshman girls under their care.

OFFICERS

LORRAINE GUEL
President
GENEVIEVE EASTLING
Secretary
MILDRED SIMONSON
Treasurer

CABINET

E. RASMUSSEN
Programs
FERN MANGERTSON
World Fellowship
MARY JANE OSTWALD
Social
ALICE MARTIN
Music
FERN WERNER
Publicity
B. FULTON
Social Service
HELEN PIEHL
Freshmen

Y. W. C. A.



FIRST ROW—Martin, Piehl, Eastling, Guell, Rasmussen, Jarvis, Nelson, Newby
SECOND ROW—Goetch, Hartland, McKenzie, Erickson, Stauffer, Kiel, Greunke, Baiert, Scribner
THIRD ROW—Schmidt, Livingston, Konecny, Fulton, Bodeen, Stauffacher, DeHorn, Quisla, Erickson



THE GREEKS





FIRST ROW—Piehl, Brys, Webster, Bunker, Anderson, Fulton, Schwahn, Jacobson
 SECOND ROW—Gething, Bassler, Martin, Colburne, Waterman
 THIRD ROW—Week, Miner, Weed

OMEGA MU CHI

OFFICERS

President.....Jane Anderson
 Vice-President.....Helen Piehl
 Treasurer.....Helen Bunker
 Secretary.....Ruth Schwahn
 Greek Council Representative.....Myra Jacobson



ROSTER

1935

JANE ANDERSON
DOROTHY BRYE
LORAIN GETHING
ALICE MARTIN

1936

HELEN BUNKER
ELINOR CRUMMEY
BARBARA FULTON
HELEN PIEHL
VERA TORKE

1937

LEDA BASSLER
MAXINE MINER
ANITA McVEY
RUTH SCHWAHN
ZELDA WEED
LOLITA WEEKS
SHIRLEY WEBSTER
FERN VAN VUREN
MYRA JACOBSON
GWENDOLYN COLBOURNE
HELENE WATERMAN
HAZEL BLECK

1938

JUNE ERDMAN
EILEEN HANSON
DOROTHY WEBER
ARTENSIA HORN
VERYL NELSON





FIRST ROW—F. Knope, M. Blake, B. Newby, G. Beggs, M. Turrish, A. Olk, M. Miller, V. Hotvedt,
 Pfiffner, Rosenow
 SECOND ROW—R. Schwebke, I. Meyer, M. Simonson, A. Bellman, C. Keen, J. Mailer, E. Groth
 THIRD ROW—J. Lynn, G. Boursier, V. Scribner, M. Wolf, C. Janes, B. Joy

TAU GAMMA BETA

OFFICERS

First Semester		Second Semester
Margaret Turrish.....	President.....	Margret Turrish
Bonita Newby.....	Vice-President.....	Bonita Newby
Barbara Joy.....	Secretary.....	Gladys Boursier
Viola Hotvedt.....	Treasurer.....	Jean Mailer
Florence Knope.....	Greek Council Representative....	Mildred Simonson



ROSTER

1935

ADELINE BELLMAN
 VIOLA HOTVEDT
 CAROL KEEN
 BONITA NEWBY
 VELMA SCRIBNER
 MARGARET TURRISH
 JEAN LYNN

1936

GLADYS BOURSIER
 ERMA GROTH
 BARBARA JOY
 FLORENCE KNOPE
 IRENE MEYER

1937

GENNETTE BEGGS
 MARGARET BLAKE
 CLAUDIA JANES
 MARGRET MILLER
 ALICE OLK
 DOROTHY PFIFFNER
 LAURA JANE ROSENOW
 REGINA SCHWEBKE
 MILDRED SIMONSON
 MAGDALEN WOLF

1938

HELEN BLAKE
 RUTH GRAHAM
 HELEN HAZEN
 ETHEL McDONALD
 RUTH RICE
 DOROTHY RICHARDS
 NAN TURRISH
 MARJORIE WELLS
 VIRGINIA WATSON





FIRST ROW—Okray, C. Torbenson, D. Gunderson, A. Schulz, G. Krumm, Mr. Kotal, A. Mannis,
A. Shorey, Mr. Schmeekle, W. Bretzke
SECOND ROW—C. Swazee, A. Hotvedt, J. Collins, A. Nygard, F. Bremmer, C. Scribner, M. Anderson
THIRD ROW—D. Rothman, J. Burroughs, M. Skinner, R. Gunderson, F. Kowalski

PHI SIGMA EPSILON

OFFICERS

First Semester		Second Semester
Asher Shorey.....	President.....	Guy Krumm
Dick Rothman.....	Vice-President.....	Morris Skinner
Jack Burroughs.....	Corresponding Secretary.....	William Bretzke
Aaron Mannis.....	Secretary.....	Allan Schulz
Guy Krumm.....	Treasurer.....	Francis Bremmer
Milton Anderson.....	Guard.....	Robert Gunderson
Arba Shorey.....	Greek Council Representative.....	Richard Gunderson



ROSTER

MEMBER IN THE FACULTY
FRED J. SCHMEEKLE

MEMBERS IN THE COLLEGE

CLASS OF 1935

MILTON ANDERSON
RICHARD GUNDERSON
GUY KRUMM
AARON MANNIS
ARTHUR NYGARD
RICHARD ROTHMAN
MORRIS SKINNER
ASHER SHOREY

CLASS OF 1936

FRANCIS BREMMER
JACK BURROUGHS
WILLIAM BRETZKE
FRED KOWALSKI
RALPH OKRAY
ALLAN SCHULZ
ARBA SHOREY

CLASS OF 1937

THERON ANDERSON
CHARLES CATHER
JOHN COLLINS
ROBERT GUNDERSON
ARTHUR HEMMY
ARNOLD HOTVEDT
EDWARD JARVIS
CARL SWAZEE
CHARLES TORBENSON

CLASS OF 1938

GEORGE CARTMILL
HAROLD DREGNE
CLIFFORD MALCHOW
PAUL MAURER
ROBERT KREILKAMP
JOSEPH PFIFFNER
LEONARD VIG





FIRST ROW—Theisen, Larson, Scheel, R. Schwahn, Klement, Murray, Steiner, Gregory, W. Schwahn
 SECOND ROW—R. McDonald, Walters, Bassler, Cashin, McGillivray, Knutzen, Hanson,
 Berard, Allez
 THIRD ROW—Rightsell, Rinka, Laabs, T. Menzel, Bucholz, F. Menzel, Lampe, Emery, Kilmer

CHI DELTA RHO

OFFICERS

First Semester		Second Semester
Richard Schwahn.....	President.....	Frank Klement
Robert Emery.....	Vice-President.....	Frank Menzel
Frank Menzel.....	Secretary.....	Donald Unferth
Leonard Scheel.....	Treasurer.....	Arthur Laabs
Charles McDonald.....	Sergeant-at-Arms.....	Ted Menzel
Nolan Gregory.....	Greek Council Representative.....	Leonard Scheel



ROSTER

MEMBERS IN THE FACULTY

MR. GEORGE C. ALLEZ
MR. NORMAN E. KNUTZEN
MR. RAYMOND M. RIGHTSSELL

MEMBERS IN THE COLLEGE

1935

ROBERT EMERY
NOLAN GREGORY
FRANK KLEMENT
ARTHUR LAABS
ROBERT McDONALD
RICHARD SCHWAHN
WILSON SCHWAHN

1936

WILBUR BERARD
CHARLES McDONALD
WILFRED MCGILLIVARY
FRANK MENZEL
RONALD MURRAY
LEONARD SCHEEL
ROBERT STEINER
RICHARD TUTHILL
DONALD UNFERTH
RAYMOND URBANS

1937

ELLERY FROST BASSLER
ALVIN BUCHOLTZ
WILLARD HANSON
TED MENZEL
CLARK LAMPE
WILLIAM LARSON
WILLIAM THEISEN
DONALD WALTER

1938

WILLIAM CASHIN
VICTOR KILMER
CHESTER RINKA





FIRST ROW—Gregory, Shorey, Gunderson, Jacobson, Shorey, Scheel, Schwahn
 SECOND ROW—Simonson, Knope, Turrish, Anderson
 THIRD ROW—Krumm, Klement

GREEK COUNCIL

Two members from each fraternity and sorority comprise the council—an inter-Greek Board.

Its aim is to solve all problems of an interfraternity nature. It is empowered to set dates for rushing and pledging of prospective members into the Greek Letter Societies.

First Semester President.....Myra Jacobson

Second Semester President.....Guy Krumm

PHI SIGMA EPSILON

GUY KRUMM
 RICHARD GUNDERSON
 ASHER SHOREY
 ARBA SHOREY

TAU GAMMA BETA

MARGARET TURRISH
 FLORENCE KNOPE
 MILDRED SIMONSON

OMEGA MU CHI

MYRA JACOBSON
 JANE ANDERSON
 RUTH SCHWAHN

CHI DELTA RHO

LEONARD SCHEEL
 NOLAN GREGORY
 DICK SCHWAHN
 FRANK KLEMENT

STUDENT PUBLICATIONS

Spring
 Day
 April
 10, 11

THE POINTER

Spring
 Day
 April
 25

Volume 111 Vol. IX No. 23 Business Public, Wis., April 4, 1935 Price 7 Cents

"THE ROMANCERS" NEXT WEEK

French Students Plan Madison Trip To See Moliere's Great Play

The French students of the University of Wisconsin are planning a trip to Madison, Wis., to see the play "The Romancers" by Moliere. The trip is being organized by the French Club and will take place during the week of April 10-15. The play is one of Moliere's most famous works and is being presented by the French Club at the University of Wisconsin.

GLENNON-COACHED SENIOR CLASS PLAY TO BE PRESENTED WEDNESDAY AND THURSDAY

The senior class play, "The Romancers," coached by Glennon, will be presented on Wednesday and Thursday evenings of April 26. The play is one of Moliere's most famous works and is being presented by the senior class at the University of Wisconsin.

Science Open House To Be Open Afternoon And Evening Of April 26

The Science Open House will be held on the afternoon and evening of April 26. The event is being organized by the Science Club and will feature a variety of scientific demonstrations and experiments.



Miss [Name]

Every and W. Schenck At Chicago This Week

Every and W. Schenck will be in Chicago this week. They are attending a conference and will be back in Madison on Monday.



[Caption]

Phi Sigma Mu To Give New Union

Phi Sigma Mu will be giving a new union. The union is being organized by the Phi Sigma Mu Club and will be used for the benefit of the students.

Band Returning From Long Tour To Night

The band is returning from a long tour to night. The tour was very successful and the band performed at many venues.

Find a Box Of Colored Crayons

Find a box of colored crayons. The box contains a variety of colors and is perfect for coloring.

Illinois College Asks For Society Charter

Illinois College has asked for a society charter. The charter is being reviewed by the University of Wisconsin.

Easter Holidays To Bring Short Weeks

The Easter holidays will bring short weeks. The weeks will be shorter than usual due to the holidays.

PUBLISHED WEEKLY BY THE UNIVERSITY OF WISCONSIN. PRINTED AT THE UNIVERSITY PRESS.



FIRST ROW—Kujath, Iverson, M. Simonson, Klement, Lynn, Skarweski, Shorey
 SECOND ROW—Hickok, G. Simonson, Miner, F. Gordon, Erickson, Steiner, Theisen

THE POINTER

EDITORIAL STAFF

Editor-in-Chief.....	Frank Klement
Associate Editor.....	Robert Steiner
Sports Editor.....	George Simonson
Women's Sports	Thyrza Iverson
News Writer.....	Jean Lynn, Donald Hickok, William Theisen
Society Editor.....	Mildred Simonson
Features Editor.....	Frank Gordon
Proof Reader.....	Maxine Miner
Typists	Dolores Skarweski, Edna Erickson

BUSINESS STAFF

Business Manager.....	Howard Kujath
Circulation Manager.....	Elmer Ruh
Faculty Adviser.....	Raymond M. Rightsell

MAKING YOUR POINTER

Each Thursday morning seven hundred students and faculty members receive their copy of *The Pointer*, little realizing that behind each week's issue lie a hundred hours of work—and much burning of the "midnight oil."

The third floor *Pointer* office is a popular place; the new furniture and the modern fixtures give one a pleasant environment in which to work. Each Monday evening the staff assembles there and the news hawks scratch their heads pensively in search of "just the right word" as they write the stories from "hot tips and scoops" they chased down during the week. The busy hum of the typewriters, as article after article is click-clicked off on yellow half-sheets to be sent to the press, convince one that the editing of a paper is a major project.

The *Pointer* this year has featured variety

in mechanical setup, a sport page that rates second to none when compared to the papers of other state colleges, a literary edition, and a fourteen page souvenir football championship edition—the largest issue in *Pointer* history and one that has set a goal to shoot at. The staff has given the students more pages than ever before in the school's history; this was possible because the Stevens Point business men had confidence in the college paper and used it as a medium to reach a potential market.

It's fascinating work—this newspaper game. There's a thrill in a personal interview out of which rises a news-story; there's a thrill in penning words and thoughts that come from observations; and, to top it all, there's a thrill in seeing your own creations in print. It's lots of work to edit a paper, but it's also lots of fun.



KLEMENT, RIGHTSSELL, KUJATH
IN CONFERENCE



FIRST ROW—Scheel, Anderson, Emery, Turrish, Shorey
 SECOND ROW—Schwahn, Gregory, Keen, Newby, Krumm, McDonald
 THIRD ROW—D. Gordon

THE IRIS

EDITORIAL STAFF

Editor-in-Chief.....	Robert Emery
Assistant Editor.....	Deane Gordon
Associate Editor.....	Arba Shorey
Photographer.....	Robert McDonald
Layout Artist.....	Raymond Thompson
Classes and Administration.....	Guy Krumm
Organizations.....	Margaret Turrish
Athletics.....	Richard Schwahn
Women's Sports.....	Yvonne Dallich
Music.....	Bonita Newby
Forensics.....	Leonard Scheel
Features.....	Asher Shorey
Society.....	Carol Keen, Jane Anderson

BUSINESS STAFF

Business Manager.....	Wilson Schwahn
Associate Business Manager.....	Frank Menzel
Circulation Manager.....	Nolan Gregory
Faculty Adviser.....	T. A. Rogers

THE IRIS IS YOUR ANNUAL

It has been the object of the Iris staff to make this book a student publication. It is not the handiwork of any printer, engraver, or commercial artist. It is not copied from any other book; it is your Iris. We feel that it represents to some degree, at least, the life of our Alma Mater.

The photography is the work of Robert S. McDonald, a senior. He has had the able assistance of Mr. Clyde Hunting in planning his work. In this volume we present to this college for the first time, the use of photomontage, or poly-exposed negative photography. The silver cover is the first to ever protect the pages of an Iris. It is the creation of the Iris artists, and was manufactured by David J. Molloy Co., of Chicago. The printing was awarded to the Linden Printing Co., of Chicago, who printed the engraving plates of Jahn and Ollier, another Chicago firm.

Thanks is due Miss Mae Roach and Mr. O. W. Neale, who have given generously of their time and advice.

The dedication to Prof. T. A. Rogers becomes doubly significant in the fact that he has for several years been faculty adviser to this publication. Each year, when the instigators of this book flee, it is he who is left to face the student body. One of the pleasantest parts of making and selling this book has been our close relationship with him in our work.



Prof. T. A. Rogers

*Other schools of valor boast
Of victories galore,
Of laurels never lost,
Of triumphs by the score;
Let them tell you of their prowess
Of warriors strong and bold,
But their colors ever lower
To the Purple and the Gold.*

MUSIC





THE SYMPHONY BAND

FRANCIS WHITEPresident
 WARD FONSTADSecretary
 DONALD BRYAN.....Drum Major
 DOROTHY RICHARDSSponsor

Itinerary

SPARTA
 LA CROSSE
 RICHLAND CENTER
 WAUPUN
 OSHKOSH
 WEYAUWEGA

Repertory

"Ruy Blas"F. Mendelssohn
 "Finlandia"Jean Sibelius
 "March Slave"Peter Tschaikowsky
 "The Merry Wives of Windsor".....Otto Nicolai
 "Universal Judgement".....De Nardis
 "Slavonic Rhapsody"Friedmann
 "Il Guarany".....A. Carlo Gomez
 "Phedre"J. Massenet
 Rossini's "Cinderella"—arr.....Victor Gabel
 "La Forza Del Destino"—arr.....G. Verdi
 "Capriccio Espagnole".....N. A. Rimsky-Korsakov
 "Symphony in B Flat" finale.....Paul Fouchel
 "The New Moon" selection.....Sigmund Romberg
 "Lohengrin" selection.....Richard Wagner
 "South Rhapsody".....Lucus Hosmer
 "Polka and Fugue" from the opera "Schwanda, the Bagpiper".....
Jaromir Weinberger
 "Grobe Fantasie" from the opera "Parsifal".....Richard Wagner
 Undine Overture.....G. Albert Lortzing



THE ORCHESTRA

The advancement made by the college orchestra has been largely due to the efforts of its director, Mr. Michelsen. For four years this organization has been one of the leading parts of the music department, having twenty-eight students who meet twice each week to practice. The orchestra has a repertoire which is one of the finest, having full orchestration for over four hundred compositions.

Its purpose is to encourage an appreciation of good music among the students and to give its own members the enjoyment of reading the music of the masters.

The orchestra's cooperation with other activities in the school has proven it of worth to both those who take part and those who listen.



FIRST ROW—Fonstad, Abrahamson, White, Michelson, Oigny, Speidel, Elliot, Goldberg, Lee
SECOND ROW—C. Scribner, Bryan, Erickson, Walter, V. Scribner, C. Seefeldt, Newby, Kuhl,
Erickson, Michelson
THIRD ROW—Theisen, Mannis, Eyer, Gardner, Roberts, Klein, Lampman, Andrae, Thompson,
Mannis

BAND DIRECTORS CLASS

Music has become a part of practically every high school curriculum in the state. The boards of education and principals have seen the value of early musical training and in most cases have provided class time, a special room and financial support. They have been looking ahead to a time when music education will be required and the rank of the high school raised or lowered according to the excellence of its musical training.

Mr. Michelsen established in this College, four years ago, a special class which met twice each week for the purpose of studying band music and learning the fundamentals of directing. Not only did they study selections but each student was given the oppor-

tunity to interpret at least one composition each week. With the other members of the class composing the band, the student was given actual practice in directing the best of band selections. This practical experience gives this group of students a very thorough preparation for conducting band organizations in the secondary schools.

During the past four years the class has been steadily growing until at the present time there are more than thirty-one students taking part. This year for the first time we have six students graduating from four years of training in band directing.

Mr. Michelsen should be congratulated for making such a fine success of the first course of this type in the state.



WOMEN'S GLEE CLUB

The Women's Glee Club, directed by Prof. Michelsen, has made a fine contribution to the life of our college this year. In spite of the fact that it is a comparatively new organization, the Glee Club is one of exceptional skill.

Although the club did not tour this year, it was heard over the local radio station and presented a group of numbers in the All-College Christmas Concert. The girls number about fifty.

Vivian Staven, a popular soprano soloist

and member of the chorus appeared at the music department's concert for the benefit of the new WLBL studio in the main college building.

Prof. Michelsen is constantly in search of new material for his glee club and welcomes the women of the college to enter the elimination auditions which he conducts at the beginning of each year. Plans are already made for many of next year's appearances.



FIRST ROW—Burroughs, Walter, Theisen, Scheel, Schwahn, Parks, McDonald, Oiman, Bush, Cartmill, Knutzen

SECOND ROW—Swenson, Bachman, Gulholt, Westphal, Tutt, Pagenkopf, Hartwig, Anderson, Davel, Plank

THIRD ROW—Pflum, Bryan, Gardner, Andre, Bestul, Danielson, Kilmer, Groves, Lampman

FOURTH ROW—Emery, Kundinger, Larson, McMillen, Eyer, Abramson, Fonstad, Pfifner,

MEN'S GLEE CLUB

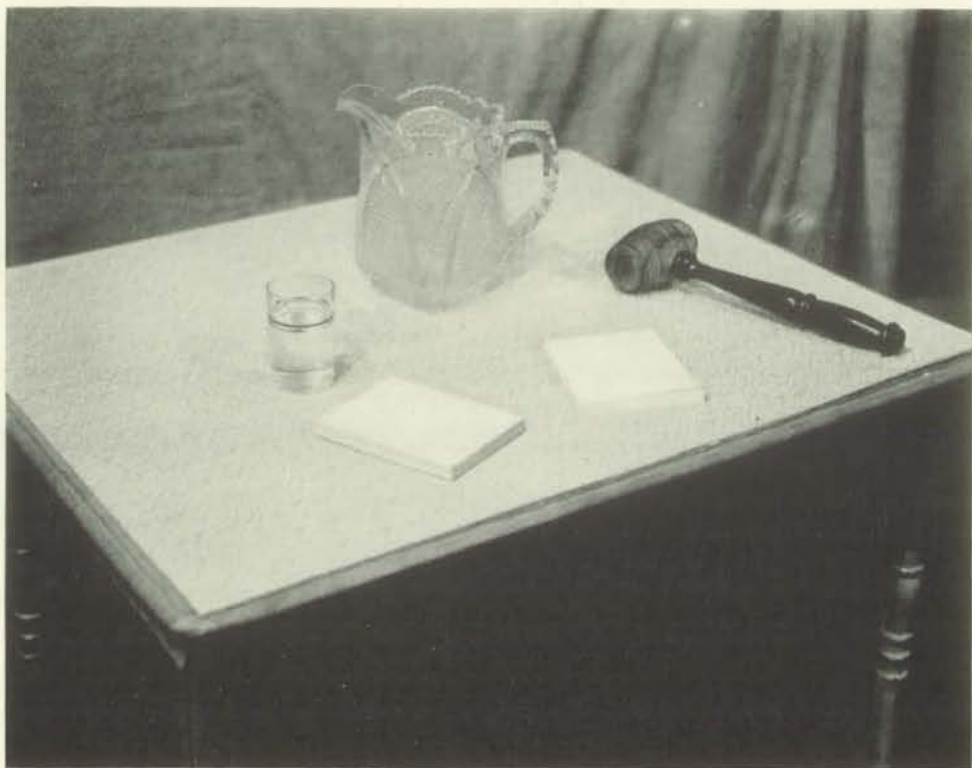
Itinerary

WAUSAU
 MERRILL
 EAGLE RIVER
 RHINELANDER
 IRON RIVER, MICHIGAN
 STAMBOUGH, MICHIGAN
 SCANDINAVIA
 WEYAUWEGA
 PLAINFIELD
 ADAMS

Repertory

"Tinker's Song" from Robinhood.....De Koven
 "The March of the Peers" from Iolanthe.....Sullivan
 "Landlighting"Grieg
 "Worship of God in Nature".....Beethoven
 "Taps"Pasternack
 "The Trumpeter"Dix
 "Sylvia"Speaks
 "Negro Spirituals"McLeod
 "Volga Boat Song".....Gibb

FORENSIC





Prof. Burroughs

CENTRAL STATE IN FORENSICS

This year Central State was host to the State forensic contest, including Eau Claire, La Crosse, River Falls, and Carroll colleges. Central State carried off the honors by winning first places in four of the six events. Jack Burroughs won the contest in original oratory, Richard Tuthill was awarded first place in the oratorical declamation contest, Ventural Baird placed first in serious declamation, and Virginia Watson won the humorous reading contest.

A resume of the 1934-35 debate season shows that the four teams made a collective record of thirty victories in inter-scholastic debates in the four tournaments entered.

In the contest at Luther College, Decorah, Iowa, Jack Ogg and Charles Cather tied for first by winning three of their four debates. In the tournament at Moorhead, Minnesota, Arba Shorey and Donald Hickok won five of the six decisions to tie for first place.

The teams won seven decisions and lost six at the Eau Claire meet.

Leland M. Burroughs came to Central State in 1920. At first his duties consisted of purely curricular work in the English department.

Since that time, he has become head of his department, and in recent years has coached all forensic activities. In the years that he has coached these teams, his understudies have brought first honors to the college more often than not. This year Miss Florence Glennon has assisted him in his extra-curricular work. Miss Glennon's chief interest is dramatics, in which she has proved herself to be an excellent coach. Perhaps the fact that both Miss Glennon and Mr. Burroughs have had considerable experience on the legitimate stage has some bearing on the success with which they have met in their work as coaches.



Miss Glennon

ORATORY AND EXTEMPORANEOUS SPEAKING



Arba Shorey

After being discontinued for a year, the state oratorical contest was again held this year. Prof. Burroughs was largely responsible for the revival of the contest.

Jack Burroughs, a son of the coach and a Junior at Central State was crowned the State Oratory Champion for 1935. This was Jack's second time to represent our college at the state contest, the last time being in 1933.



Jack Burroughs

Jack's oration was entitled, "The Integrity of Youth." By virtue of his victory, he represented Wisconsin in the Interstate Contest, held at Northwestern University. Central State is exceedingly proud of its record in oratory. Since Mr. Burroughs has coached these events, C.

S.T.C. has had five state championships in oratory. The last victory was in 1932 when Celestine Neusse won both the state and interstate contests with his selection "The Bourne of Youth."

Arba Shorey, the versatile lad from Argonne, who has made such a stir in intellectual circles during his three years here, decided to supplement his work in debate with extemporaneous speaking. He represented the college in the state meet held here March 19 with a talk entitled "Modern Youth and Political Radicalism." At this same contest three other firsts were won by our contestants. Richard Tuthill spoke on the topic "The Challenge of Chaos" and was awarded first place in oratorical declamation. Serious declamation was won by Ventura Baird, who represented Central State with her selection "Within The Law." Virginia Watson, a Freshman, won the contest in humorous declamation.

DEBATE

"Resolved, that the nations should agree to prevent the international shipment of arms and munitions" was the proposition for debate of this year's teams. Previous championship debate teams have made competition quite keen at Central State. Prof. Leland M. Burroughs cut the numerous prospective debaters down after a series of close try-outs. The material this year was new as far as college competition was concerned since the championship squad of 1934 was entirely lost by graduation.

The teams that represented the college in the season's schedule were Helene Waterman and Virginia Watson, Jane Reedal and Gladys Boursier, Jack Ogg and Charles Cather, and Arba Shorey and Donald Hickok.

The Cather-Ogg combination tied for first

place at the Luther College tournament, Decorah, Iowa, while Virginia Watson and Helene Waterman received third place in the Women's Northwest Debate Tournament held at St. Catherine's College, St. Paul. The Midwest Debate Tournament held at St. Thomas College, St. Paul, ended without any school being declared winner. Four Point teams were entered, winning a majority of their twenty-six debates.

Besides the decision debates, the squad was also active in non-decision contests at these various tournaments, and met Wheaton College, St. Thomas, and Marquette University here, while Arba Shorey and Charles Cather traveled to Chicago to meet Loyola University.

FIRST ROW—Shorey, Waterman, Hickok, Watson, Cather
SECOND ROW—Ogg, Boursier, Reedal, Cummings



CAMPUS

AUTOGRAPHS

Central State Teachers College

Stevens Point, Wisconsin

Member

AMERICAN ASSOCIATION OF
TEACHERS COLLEGES



"Shrine of Alma Mater"

Degrees in all fields of
Public School Service



Also three and two year courses in rural,
elementary, and junior high
school fields.



Special Attention to
RURAL EDUCATION
HOME ECONOMICS



Excellent Summer Sessions

"Let us turn again, and fondly,
To thy best traditions true—
Central—Queen of all Wisconsin,
Alma Mater—here's to you!"

"THE COLLEGE THAT TRAINS FOR SERVICE"



NOLAN GREGORY

Senior

Athlete—Basketball and Football—Starred in Wisconsin game—Co-captain, 1933-34 season—All-conference guard for two consecutive seasons—fraternity man—President, Chi Delta Rho, 1933—King of Mardi Gras, 1934—Iris Staff as Circulation Manager—Greek Council—Forum—Congenial—Level-headed—Versatile.



Viola Hotvedt, a member of Tau Gamma Beta sorority, follows the lead of the feminine students by safe-guarding her complexion with cosmetics from HANNON-BACHS; whose cosmetic counter carries a complete line of the finest perfumes, lotions, and creams.

VETTER
Manufacturing
Company

Phone 88
For
MANUAL
TRAINING
BETTER
LUMBER

SERVICE
PRINTING
COMPANY

J O B
PRINTING

Phone 236-J
Stevens Point,
Wisconsin



JANE ANDERSON

Senior

Home Economics Club—Y. W. C. A.—Omega Mu Chi
Sorority, President, 1935—Greek Council—Iris Staff—
Appointed to Dietetics Staff at University of Michigan
hospital—Tiny—purposeful—chic.

HOMECOMING

Homecoming with its great display was again supreme over the entire campus the weekend of October 6th, when the Point gridders entertained the Oshkosh Sawdusters in the annual Homecoming tilt.

Starting with a bang at the bonfire and snake dance held on the college campus, carried on by pre-Homecoming dances and dinners, recharged by the mammoth parade, and reaching its peak at the gridiron, the excitement and fanfare of homecoming was the highest ever reached.

The social organizations took advantage of Homecoming to hold their annual alumni banquets and dances. The Phi Sigma Epsilon Alumni Ball, the main event Friday evening, was held at Hotel Whiting. Tau Gamma Beta held its function at a luncheon at Hotel Whiting, Saturday noon. Omega Mu Chi sorority convened at their annual banquet, also held at Hotel Whiting. Chi Delta Rho fraternity entertained its alumni at a dinner at the Gingham Tea Room.

Ten o'clock Saturday morning saw the "big parade," a hilarious feature of the Homecoming program. Led by the seventy-two piece College Band, the parade, although using the depression for its theme, amused

and entertained the thousands who witnessed it. First prize was awarded the Grammar Round Table with a float labeled "Children of the Brain Trust," including college students from this department dressed as babies, and impersonating Tugwell, Johnson, and Wallace. The Primary Department won second place, with members carrying banners marked with all the combinations of the NRA setup, such as CWA, PWA, FERA, NRA, etc., ending in "But, after all, we Need Our A, B, C's." Third place was awarded the Chi Delta Rho fraternity whose members represented the defeated Oshkosh team clad only in barrels and bandages. The floats of Omega Mu Chi sorority and the Home Economics Department received honorable mention.

The big event, of course, was held Saturday afternoon on Schmeckle field, with the Kotalmen making it a perfect homecoming by trimming a fighting Oshkosh aggregation.

To climax the affairs, the big homecoming dance was held in the new gym, with the Castillians furnishing the music. The crowded dance floor was the final proof of the success of this year's Homecoming.



TACKLE and GUNS
All Athletic Equipment
JANTZEN BATHING SUITS

THE SPORT SHOP

Point Sporting Goods Company

Wholesale - Retail

CITY FRUIT EXCHANGE

Quality
Fruits & Vegetables

Telephone 51

457 Main Street

MOLL GLENNON COMPANY

We carry complete lines of
DRY GOODS and LADIES' READY-TO-WEAR

We Want Your Trade

Come to See Us

CHI DELTA RHO

The X Delta P frat boys—we won't call them men—are a direct offshoot of the Rho Dammit Rho frat of dear old Trenchmouth College. They are inordinately proud of their lineage and strive to carry on its noble ideals—but nobody has yet found out what their ideals are! A good many people suspect that they haven't any.

Noted for their sheiks, these boys, when they take themselves off their partner's feet, like to perform their novel group dance, appropriately called the "Chi Delt Fling." This is performed in the following manner by any good Delta boy: First, standing on the left foot, if you can stand, scrape the sole of the shoe upon the floor; transferring to the right foot, scrape the accumulation hitherto attached also upon the floor; and then, with a

quick shifting of the weight to the left foot, gently boot said deposit from the floor so that, in ending its parabolic flight, it will land neatly upon the reception line rug. If there is no reception line, merely whisper "Fore" and let drive. The Chi Deltis think it's more darn fun when nobody knows just when the fun begins!

The coeducational part of this citadel of learning is rapidly becoming wise to the antics and frolics of these boys—and any dateless night at Nelson Hall will find the gals whispering together thusly, "I know, my dear—is he a Chi Delt? Oh, for goodness' sakes!— You don't say— Who?—Len Scheel?—Tsk! Tsk! Tsk!— Who were the others?—Walters, Larsen, and McDonald?—What will become of us poor woiking goils?"

GUY KRUMM

Senior

Three-year letterman in Basketball—Co-captain, 1933-34 season—High scorer in defeat of Wisconsin—All-conference forward, 1933—Junior Prom King, 1934—President of Phi Sigma Epsilon fraternity, 1935—Greek Council President, 1935—Iris Staff—Forum—Genial—Likeable—A. B. M.O.C. (Big Man On The Campus.)



● THE ● SPOT CAFE

For Good Food

PLATE LUNCHESES — EVENING LUNCHESES

Ask for a Meal Ticket

GRACE AND ANNA BORATZ

Proprietors

414 Main Street

Tel. 95

OMEGA MU CHI

Each member of this sorority must always stand as the highest in ideals, character, and wisdom. That's what they say! Each must be an "Omega girl" in thought, word, and deed—but when these last three stages are reached the trouble begins!

Talk about your rowdies upon the campus, these "Omega girls" are just that. But the dear children do have so much fun—one of them was even so daring as to put lemon in her Coca Cola instead of an ice-cube. Such gaspings and gigglings as went on, my dears!

Dear old Aunt Martha, the college widow of her time, (and not grass either, you ninny), was an "Omega

girl." But just look at her now! Things came to such a pass with Martha that when they caught her playing croquet (?) upon the rear campus with her ankles exposed, the sorority rose up in arms (whose arms?) and fired her from their midst. This, gentle readers, just goes to show how the Mu Cows (er, ah, I mean Mu Chis) defend their ideals.

Hark ye, coeds of Central State! Keep your chin up, your teeth in, and your wits (if you have any) in a bundle, and you will have no trouble in becoming a sweet, but slightly naughty, Omega gal.

P. S.—If you don't have any dates after you get in, you'll know the reason why!



Home Office Building

Hardware Dealers Mutual Fire
Insurance Company
Hardware Mutual Casualty Company
Home Offices: Stevens Point, Wisconsin

Mutual Companies operating on the age-old mutual principles of economy in management, equitable claim settlements, and the return of profits to policyholders.

LINES OF BUSINESS

Automobile—Burglary—Fire—Windstorm and Hail—Rental Value—Rents—General Liability—Plate Glass—Sprinkler Leakage—Use and Occupancy—Workmen's Compensation—Leasehold Interest—Riot and Civil Commotion—Explosion.

BRANCH OFFICES

Appleton, Wisconsin
Atlanta, Georgia
Boston, Massachusetts
Buffalo, N. Y.
Chicago, Illinois
Dallas, Texas
Detroit, Michigan

Duluth, Minnesota
Fond du Lac, Wisconsin
Indianapolis, Indiana
Los Angeles, California
Madison, Wisconsin
Milwaukee, Wisconsin
Minneapolis, Minnesota
Newark, New Jersey

Omaha, Nebraska
Owatonna, Minnesota
Portland, Oregon
San Francisco, California
Stevens Point, Wisconsin
St. Paul, Minnesota
Toronto, Canada



THYRZA IVERSON

Senior

Sigma Zeta—Delegate to National Convention, 1935—
W.A.A. president, 1934—Forum—Margaret Ashmun,
President 1935—Y.W.C.A.—Mardi Gras Queen, 1932-1934
—Pointer Staff, 1934-35—Women's Glee Club—Violinist,
College Symphony Orchestra—Energetic—Athletic—
Congenial.



ROBERT NEALE

Senior

President, Rural Life Club, 1935—Delegate to Country
Life Convention, Washington, D. C., 1935—Sigma Zeta,
Vice President, 1935—Harlequin—Iris Staff as Sports Ed,
1934—Pointer, 1930—Tennis, 1933-34-35—Wrote the rec-
ognized Science treatise, "The Enrichment of Science
Teaching"—Traveler—Politician—Hustler.

WOMEN'S ATHLETICS

The Women's Athletic Association is among the most active women's organizations in the college. Its purpose is to promote good sportsmanship and to develop a keener interest in sports, and, in so doing, raise the standards of women's athletics.

The organization sponsors all women's sports, both major and minor. Among the major sports which are most popular, are hockey; basketball, volley ball, and baseball. The minor sports include archery, tennis, horseback riding, skating, tumbling, and tap dancing. These activities constitute a well-rounded program of athletics for the entire year in which a large number of girls participate.

The outstanding event that the Women's Athletic Association sponsors each year is the gay, colorful Playday. It is a gala event during which girls from central Wisconsin high schools are invited to C.S.T.C. for a day of friendly competition in many sports. The motive of this event is to carry out the idea "Play for play's sake," rather than playing merely to win.

The motto of the W.A.A. is "Sports for all and all for sports."

Miss Gilbert was the advisor of the Association, and showed a keen interest in every sport, giving helpful coaching and suggestions for improvement.



MISCELLANEOUS ACTIVITIES

The women's game room is a very lively place, with many girls spending their free time in it making use of the ping-pong game, the dart baseball or deck shuffle-board equipment and other attractions.

The Women's Athletic Association was also represented in the Homecoming Parade, displaying a clever stunt in which girls wore football suits that represented Oshkosh.

Hockey—The first W.A.A. sponsored activity of the school year for the coeds is hockey. Practices were held on Schmeekle field, where the fundamentals and techniques of the game were first taken up, followed by active scrimmages between selected teams.

Archery—This is another popular fall sport with the women of Central State. It offers to all interested a chance for healthful recreation, with a minimum of danger and a maximum of benefit.

Tap Dancing—There were two tap dancing classes held this year. The beginners held their practices in the old gymnasium under the direction of Thyrza Iverson. These practices consisted of the fundamentals of tap dancing and simple routines. The advanced class, under the supervision of Miss Gilbert, took up more difficult routines and group specialties. From this latter class is drawn the talent needed in all-school productions.



THE
COLLEGIATE
HANGOUT

Swenson's College
Eat Shop



MEALS—SHORT ORDERS—
SOFT DRINKS—SCHOOL
SUPPLIES



Excellent Food

Low Prices

Compliments of

Worzalla
Publishing Company

BONITA NEWBY

Senior

Active member of the band and Symphony Orchestra—
Harlequin Vice-President—W.A.A.—Y.W.C.A.—Tau
Gamma Beta sorority, vice-president—President of Sigma
Tau Delta—Margaret Ashmun—Student Handbook—Iris
Staff—Efficient—Cute—Socially Inclined.



THE GAY NINETIES REVUE

Shortly after the second semester opened, preparation was begun on "The Gay Nineties Revue." Seventy-five students, teachers, and townspeople were cast, and, after two weeks of concentrated work, the Revue was staged three times before capacity audiences.

Sponsored by the Athletic Committee, and written and directed by Arnold M. Malmquist, a former student of this college, the proceeds were used to purchase gold footballs for this year's football champions.

The outstanding feature of this production was its fine showmanship. The overture, a medley of popular songs of the "Maive Decade," prepared by young and old for the songs, dances, scenes, characters, costumes, and handle bar mustaches of the Nineties. The Daisy Belle chorus, a street scene of a group of youths dressed in the costumes of

this period, opened the first act. The Canvas of Memories was a particularly beautiful scene. Girls dressed in the styles of that period were gracefully handed from a glittering silver frame by a gallant, singing artist. A weird and tense scene was the pantomimed adaptation of "The Shooting of Dan McGrew." Steve Brodie's jump off Brooklyn Bridge was cleverly arranged around the traditional characters and a Bowery chorus. The Minstrel Show added zest and humor to the program. Many thought the high-light of the entire production was the beautiful and almost professional perfection of the Merry Widow Waltz.

The Grand Finale with the entire cast on the stage singing again the theme song of the show, spectacularly closed this most melodramatic presentation.



INTERESTING STUDENTS

RICHARD SCHWAHN Senior

Master Scientist of Sigma Zeta, National Honorary Science fraternity—Delegate to two National Conventions of Sigma Zeta—Athlete—Football, 3 years—captained the 1933 undefeated Conference champions from the left-end position—Assistant coach, 1933-34 season—Tennis team, 1932-33-34—Chi Delta Rho fraternity—Secretary, 1932—President, 1934—Greek Council—Forum—Sports of the 1935 Iris—President of Freshman class in 1931—Vice-President Senior Class—"S" Club prexy, 1934-35—Band, 1931-32-33—Men's Glee Club—Handsomeness—well-dressed—busy—no stranger at social affairs.



Boston Furniture and Undertaking Company

430 Main Street

Established 1888

QUALITY FURNITURE

AND RUGS

AT

REASONABLE PRICES

THE Big Shoe Store

CHIC FOOTWEAR

FOR ALL OCCASIONS

AAA to EEE

NO FOOT TOO SMALL

NO FOOT TOO LARGE

419 Main Street

STEVENS POINT, WIS.

Headquarters
for
STUDENTS' CLOTHING
AND
FURNISHINGS

■
**Continental
Clothing
Store**

PHI SIGMA EPSILON

Oftimes mistaken for the "Five Swigs" of international fame, the boys of P.S.E. are continually wiping mud out of their eyes. Why they should choose mud is beyond general comprehension—most people prefer egg with their coffee.

When not engaged in moving from house to house or entertaining the Chi Delts, the Phi Sigs spend their time tackling the ferocious task of knitting. Nobody knows what they knit, though some do guess ash tray dollies and spittoon covers. Pass by the P.S.E. frat house any dull afternoon and you will hear the gentle murmur of industrious knitters—"Purl one, drop two; curses, I did drop two; well, pick 'em up, sissy; pick them up yourself, you big bully Asher Shorey." Just then the Sergeant of the Knitters will intervene and lustily rap the tongue-fighters over the knuckles with a feather duster—the electric tenseness of battle in the air is dismissed and the knitters resume their labor. Ah, such is life in the house of Kappa chapter—until some super-sensitive soul cries, "Treason in the ranks; I smell a Chi Delt!"



Shirley Webster, R. Wesley Schwahn, Alice Martin, and Len Scheel, are seen refreshing themselves at TAYLOR'S superb SODA FOUNTAIN. TAYLOR'S not only satisfy collegiate sweet-tooths, but offer a fine gift department, cosmetic department, and drugs and prescriptions.

FANCY GROCERIES—STATIONERY

SHERWIN WILLIAMS PAINTS—WALL PAPER

OFFICE SUPPLIES—MURPHY'S VARNISH

2

The Up Town

INCORPORATED

Telephone 994

426 Main Street

INTERESTING STUDENTS

HELEN PIEHL

Junior

Home Economics—Home Ec Club—Leader in Y.W.C.A.—Her topic, "World Fellowship"—Women's Athletic Association—Women's Glee Club—An active member of Omega Mu Chi sorority—Gay—popular—a well-beloved figure on the campus.



MARDI GRAS

The Mardi Gras is a thing of the past. Everybody present agreed that it was as it was advertised "the outstanding social event of the season." Being the only masked ball at C.S.T.C. for several years, it proved a distinct success.

Contrary to general custom, a queen only was elected. She, in turn, was to choose her king. Miss Laura Jane Rosenow of Stevens Point was elected after a close race. Her king was Charles Torbenson of Chippewa Falls.

Opening with a stage show in the Auditorium at 6:30 Tuesday; continuing with side attractions in the form of a street carnival throughout the corridors; and ending with a masked dance featured by the awarding of many prizes for costumes, the Mardi Gras was the best in the memory of any student now attending college.



Charles Torbenson, Laura Jane Rosenow

6:30 Tuesday; continuing with side attractions in the form of a street carnival throughout the corridors; and ending with a masked dance featured by the awarding of many prizes for costumes, the Mardi Gras was the best in the memory of any student now attending college.

James Parks, Roy Peterson



The costume awards were as follows:

- | | |
|---------------------------------------|--|
| Most Beautiful Costume (Single)..... | Laura Rajski |
| Most Beautiful Costumes (Couple)..... | { Nolan Gregory
Regina Schwebke |
| Most Novel Costumes (Group)..... | { James Parks
Lucy Hanaway |
| Comic Costumes..... | { Roy Peterson
Agnes Parks
Donald Hickock
Cletus McGinley |
| Best Group..... | Omega Mu Chi Sorority |



WILFRED ENGBRETSEN

The first important social event of the year was the Senior Ball, held Friday, Dec. 14. Seizing the unusual for a theme, the decorating committee of the senior class, headed by Richard Schwahn, turned the gymnasium into a stark prison cell block. Black streamers converted the spaces under the balcony into forbidding cells, which were dimly lighted by old-fashioned carbon lights. A tall and forbidding gallows, equipped even to a noose with the regulation hangman's knot, cast its shadow over the stage on which the orchestra played. At the opposite end of the gymnasium, an electric chair, fully equipped and waiting only for an occupant, served to enhance the theme.

Realism further dominated the scene, with armed guards patrolling the balcony, a machine gun pointed down upon the dancers, a sweeping searchlight that continually searched the floor for "criminals," and a nerve-shaking siren that was used to announce intermission time. Punch was served from barred recesses by men in striped convict garb, and the clever black and white programs carried on their covers an imprint of a thumb, and were edged by a ball and chain.

SENIOR

Those in attendance danced to the lilting tunes of Tommy Temple's orchestra. Leading the Grand March were the Senior Class president, Wilfred Engebretson, and his Queen, Miss Florence Glennon. Second in line were the General Chairman of the Ball, Leo Flatley, and his partner, Miss Evelyn Peterson. The class officers and general committee members followed next in rank.

In the receiving line were Mr. Engebretson and Miss Glennon, President, and Mrs. Frank S. Hyer, Regent, and Mrs. W. E. Atwell, Dean and Mrs. H. R. Steiner, Miss Susan Colman, and Mr. Flatley and Miss Peterson.

A formal, strange as it may seem, is not only an evening of glitter and glory. It is preceded by weeks of preparation and hard labor. We give you the names of the chairmen who headed the workers:

Decorations.....	Richard Schwahn
Publicity.....	Howard Kujath
Tickets.....	Leo Flatley
Refreshments.....	Sophia Nicolazzo
Music.....	Aaron Mannis
Invitation.....	Yvonne Dallich



MISS GLENNON

BALL

THE COPPS COMPANY

Distributors of

The Famous

DEERWOOD COFFEE

"It's always fresh!"

Importers—Roasters—Distributors

T. A. FREIBERG

PLUMBING AND HEATING
CONTRACTOR

General Electric
Oil Burning Furnace

DAY AND NIGHT SERVICE

110 Strongs Avenue
Phone 383

RINGNESS SHOE COMPANY

—For Better Shoes—

"Quality Footwear

at

Reasonable Prices"

417 Main Street

Phone 360-J

Phone 360-J

TAU GAMMA BETA

The two favorite expressions of the Tau Gams are: "You can't take it," and "You're a sissy!" (Cute little sayings, eh?) These terms immediately give the readers an idea of the I.Q. of this group of campus "darters." Merrily flitting from rendezvous to rendezvous—they never seem to flit into a classroom—the Gamma girls find collegiate life just too, too divine!

When not engaged in dancing the heels out of their stockings or putting on another layer of face-preserver, the girls of T.G.B. hold weekly meetings, during which the men of this college (gentlemen or otherwise) are raked fore and aft, stem to stern, and over the coals! Once in a while a faint glimmer of intelligence leaks through from some poor new comer, but it is quickly suppressed by shouts of "Treason" and "Somebody let the cat out of the bag!"

May the great Deane of all Deans (J. Deane "Dizzy" Gordon to youse guys) spare them a blessing or two. Ahem. Do they need it? Huh, just ask them!



Arba Shorey

INTERESTING STUDENTS

ARBA SHOREY

Junior

President of Bloc Honorary, 1934—Sigma Tau Delta—Pointer Staff, 1933-34—Iris Editor-Elect for 1936—Forum—Corresponding Secretary of Phi Sigma Epsilon fraternity—Associate Editor, 1934, Triangulum, National Phi Sigma Epsilon Magazine—Debate—Extemporaneous—Editor, Student Directory, 1934—Greek Council—Reader—Philosopher—Silver-tongued—Dependable—A Friend to all.



This picture goes to prove that a man may be an undergraduate and still know the correct thing to wear. Arnold Hotvedt, a Sophomore and member of Phi Sigma Epsilon fraternity, finds that the better dressed males prefer Hart Schafner and Marx clothing from the MODERN TOGGERY whose motto is, "Exclusive but not Expensive."

TRAINING

Perhaps no other expression has been used as frequently to describe the place of the Training School in a teacher training institution as the following, "the training school is the heart of the normal school." This quotation fittingly describes the vital function of the training school in the process of training teachers. Superintendents and other employers of teachers consider successful teaching experience to be one of the most convincing qualifications of any teacher applying for a position. The training school provides the first experience in teaching that the beginning teacher secures and the practice teaching record is considered to be of first importance in evaluating a teacher's preparation for teaching successfully in the field. The providing of such experience has always been the chief purpose of the Training School at C.S.T.C. Its aim is to provide typical schoolroom situations and problems such as are met in the field, and aid the student teacher in gaining practical first hand experience in dealing with them. Only by so doing can the training school justify being called, "the heart of the normal school."

The above described function differentiates the training school from the so-called laboratory school where experimentation is the prime business of the faculty and students. The laboratory schools of large universities are familiar examples. Their efforts are devoted to scientific investigation of the teaching and learning processes. In their laboratories we find apparatus designed to measure the eye-movement in reading, the eye-voice span, and the like; observations made to determine the continuity of attention, rates of reaction to stimuli, and many others too numerous to mention, are made and carefully analyzed by experts.



SCHOOL



The laboratory school must obviously be staffed by men and women of superior skill, training, and experience to carry on successfully this difficult research type of investigation. Such talent is found only in a few of our great universities. The training schools function to apply the findings of the laboratory school to methods of teaching, i.e., to provide means of using these scientific data in improving the instruction of children. Our Training School has done much of this adaptation work in the effort to send out to the children of the state the best teachers possible for it to produce. It considers itself an organization that exists only for service of the children who come under the influence and instruction of Central State's graduates.

Our Training School maintains a typical 6—6 organization. A Primary Department consisting of grades 1, 2, and 3, an Intermediate Department consisting of grades 4, 5, and 6, and a Junior High School division comprising grades 7, 8, and 9. The school is staffed by nine training teachers, one to each grade.

Since 1930 the school has occupied a fine new building north of the main structure on North Reserve Street. This gives the school an identity and personality of its own which it could not have while a department of the college proper. While it enjoys this individuality of its own, it supports and participates in every effort and activity that makes for general progress and welfare of C.S.T.C. as a whole.

THE TRAINING SCHOOL LIBRARY

One of the outstanding evidences of the increasing importance of the library in education has been the comparatively recent development of the training school library. Six years ago the children's books were housed in the main reading room of the college library. When the new training school building was constructed provision was made for a small children's library on the third floor. A few years of use proved the inadequacy of this room and in the winter of 1934 the suite of rooms on the south side of the third floor was made available for a training school library.

The present training school library is not only ideal from an administrative and educational point of view, but, located at the opposite end of the corridor from the assembly room, affords the outstanding show place of the training school. This new department of the C.S.T.C. library has few equals and none better in teachers colleges. It consists of a spacious, well-lighted reading room, a room for primary children, the walls of which are decorated with a mural painting descriptive of fairy tales, a student teachers study room, a social science conference room, and a training school library office.



MR. HERRICK
Director of Training

The function of the training school library is three fold:

It is administered to give library service to the children in the training school, providing literature for class work and pleasure reading.

It provides materials for the use of student teachers and the opportunity for acquaintance with children's literature as part of their professional teaching equipment.

It serves as a model library and laboratory for the teacher-library training classes which qualifies prospective teachers for the state teacher-librarian training certificate.

The generous book collection on the best in children's literature is continually added to but the outstanding current children's books. The library subscribes to all the output of the Junior literary guild, assuring the continual growth of the best in children's books. There is also an outstanding collection of pictures which furnish abundant illustrative material for teaching purposes.

Due to the fact that the training school library is a department of the college library, the entire college library is potentially available for its use.



The Student-Attitude

If you can retain that most valuable habit of your college career—the student-attitude,—your future is well-established. New ideas, new thought-trends, new methods demand the flexibility of mind that comes only with constant application of the student-attitude in your daily work.

So far, you have done well. Congratulations.

A. L. SHAFTON and CO.,

Stevens Point, Wis.

Compliments of

Citizens

National

Bank



Headquarters for

Savings

SALES AND SERVICE

CHEVROLET

and

OLDSMOBILE

G. A. Gullikson
Company

Phone 100

301 Strongs Avenue

WHITING PLOVER PAPER COMPANY

The Golden Plover, familiar to everyone who has lived in Stevens Point or its vicinity, is the trademark symbol of Whiting-Plover Paper Company—manufacturers of high quality bond, writing and ledger papers. In future years, choose a paper bearing this symbol—your guarantee of honest value, long life, and perfect writing and printing qualities.

INTERESTING STUDENTS

MARGARET TURRISH

Senior

Tau Gamma Beta sorority—President, 1935—Sigma Tau Delta — Treasurer, 1935 — Margaret Ashmun — Student Handbook—Forum—Iris Staff, 1935—Greek Council, 1934 —Affectionate—talkative—especially when dancing.



MEMBERS

Row 1
Bryan
Plank
Malchow
Larsen
Swanson
Tutt

Row 2
McDonald
Sorbye
Smith
Dhlinger
Irish
Rogers

Row 3
Caskey
Haas
Johnson



CAMERA CLUB—Newly organized, the Camera Club is intended to offer its members a working knowledge of the various phases of the art of amateur photography, such as snapshots, developing, tinting, etc. In this, its first year, the Club has been of invaluable service to the Iris.

The officers of the Camera Club are: President—Clifford Malchow; Vice President—Donald Bryan; Secretary—Bill Larsen; Treasurer—Beverley Plank.

COMPLIMENTS
OF
THE
HOTEL
WHITING

THE
KREMBS
Hardware Company
▼
FOR HARD-WEAR
Established 1863

Phone 21
Stevens Point, Wisconsin

The Class of '36 outdid itself, under the direction of Leonard Scheel, class president, in presenting to the public an unusual and beautiful Junior Prom. Carrying out the decoration theme of a "Rhapsody in Blue" to its highest possibilities, William Bretzke, General Chairman, presented his class with an effective Prom that will be hard to match or surpass in the future.

The first thing noticed upon entering the gymnasium was the predominance of the softly blending shades of blue and silver. Along the sides of the gymnasium were blue pillars, bathed in the glow of lights hidden in their bases. Blue rays from within the columns were reflected down upon the dancers by many shimmering reflectors; the total creating a beautiful indirect lighting effect.

Another new note in decorations was struck in the charming simplicity and modern touch used in this theme. The modern touch was carried out in the twin punch booths, located one on each side of the stage, which were simply half-circles of blue and silver. The walls were cleverly turned into a series of four graduating shades of blue.

As a finishing touch, an immense modernistically tiered chandelier, also in shades of blue, hung low from the ceiling and shed a soft light over the dancers.

The decoration committee, under the leadership of Barbara Joy, worked very hard to achieve and carry out the difficult theme chosen, and deserve much credit for their efforts.



JUNIOR



Leonard Scheel, of Stevens Point, Junior Class president, led the Grand March with his prom queen, Miss Dorothy Weber, daughter of Mr. and Mrs. O. L. Weber, also of Stevens Point. Miss Weber is a freshman, and a member of Omega Mu Chi sorority. Mr. Scheel is a member of Chi Delta Rho fraternity. Following the king and queen in the Grand March were Miss Helen Bunker, Junior class vice-president, and her escort, Mr. Allen Schultz.

In the receiving line were President and Mrs. Hyer, Dean and Mrs. Steiner, Mr. and Mrs. Raymond Rightsell, Mr. Scheel and Miss Weber, Mr. William Bretzke, General Prom chairman, and his lady friend, Miss Leda Bassler.

Heads of the various committees which helped to make this event a success were: Francis Bremmer, chairman of the music committee; Barbara Joy, chairman of the decoration committee; Helen Piehl, chairman of the refreshment committee; Helen Bunker, chairman of the invitations and program committee; and Robert Steiner, chairman of the publicity committee.

Russ Walter's ten piece orchestra of Milwaukee aided in carrying out the theme effect by mixing "blues" numbers with the popular hits on the program.

More than two hundred couples attended the dance, reveling in the wonderful music and distinctive surroundings.

PROM

DRUGS AND SODA

LUNCHEONETTE

SCHOOL SUPPLIES

KODAKS



Sexton-Demgen Drug Co.

THE REXALL STORE

27 Steps from Post-Office

Phone 27

College Supply Store



Everything in Student
Supplies



Prom King Scheel and General Chairman Bretzke decided that multiple worries were dangerous — no matter how hard the work before, these two leaders on Prom night must appear at their best—so they got rid of one big worry by sending their Tuxedos to NORMINGTONS to be cleaned and pressed to a dazzling perfection.

Compliments
of
Noah's Ark

The gay and amusing comedy by Edmond Rostand, "The Romancers," offered the Senior Class an excellent background for the annual display of its dramatic talent. The cast was one made up of experienced players. Edna Crocker and Jack Ogg have appeared in many plays during their college careers, and Mr. Taege has been associated with Winninger Brothers. The fathers, played by Nolan Gregory and Leo Flatley, grew old and scheming very convincingly, while Asher Shorey, as the gardener, collected all the mannerisms ever associated with "men of the soil."

The story of the play is the old but eternally sweet one of the son and daughter of two close families falling in love through the machinations of their fathers. But when the plot is exposed they think their love was only in their imagination and renounce their love pact. The separation brings them the realization that true love is not dependent upon an eternally romantic atmosphere, and they are reunited in a stronger love.

The cast is as follows:

Sylvette.....	Edna Crocker
Percinet.....	Jack Ogg
Straforel.....	Eugene Taege
Pasquinot.....	Nolan Gregory
Bergamin.....	Leo Flatley
Blaise.....	Asher Shorey
Attendants of the Sedan Chair.....	
Torch-bearers.....	
Fencers.....	
Musicians.....	
Guests.....	

Asher Shorey and
 Richard Gunderson
 Clarence Schulte
 Robert McDonald
 Arthur Nygard
 Arthur Laabs
 Dorothy Richards
 Marion Marshall
 Alice Bentz
 Marion Murgatroyd
 Viola Hotvedt
 Bonita Newby
 Jane Anderson
 Margaret Turrish

CAST OF "THE ROMANCERS"





SCENE FROM "THE ROMANCERS"

BAKE-RITE IS GOOD BREAD

First National Bank

CAPITAL AND SURPLUS \$250,000

Largest in Portage County

The Better Things in Life

THERE is a secret longing in each heart for something that is better, higher, nobler, finer than what we have—and when possessed should make us better, higher, nobler, finer.

SLAVING without Saving will never bring us to our Heart's Desire—never get us anywhere at all. For present contentment and for future satisfaction there is nothing that will come up to a tidy sum of money tucked away in an account here.

LINDIEN PRINTING CO.

517 SOUTH JEFFERSON STREET
CHICAGO, ILLINOIS



*Producers
of
Superfine Annuals*



COLLEGE AND HIGH SCHOOL
PUBLICATION PRINTERS

SECURITY



SOUND managerial policies and long, successful experience have provided us with sufficient equipment, adequate personnel, and ample resources to render dependable service as artists and makers of fine printing plates. That you will be secure from chance, is our first promise.

JAHN & OLLIER ENGRAVING CO.
817 West Washington Blvd., - Chicago, Illinois

Jahn and Ollier Again

In the foreground - Ft. Dearborn re-erected
in Grant Park on Chicago's lake front.
Illustration by Jahn & Ollier Art Studios.

