

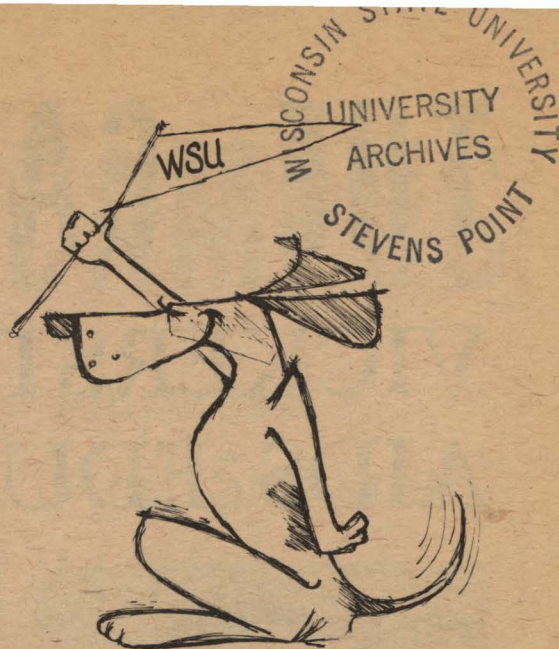
# University

# ALUMNI NEWS

Wisconsin State University . Stevens Point

Volume 1 Number 1

October 1968



## ASSOCIATION GETS NEW LOOK

### - AS I SEE IT -

Lee Sherman Dreyfus  
WSU President

Dear Alum:

We are now, as you know, going into the 75th year of the existence of this institution.

It is time that we begin to pull together the more than 20,000 alums of this university who live all over the country.

When I say pull together I mean on some kind of a common communications base through which we can all know what the university is doing, what the university intends to be doing, what the alumni are doing, and lastly what the alumni think the university ought to be doing.

As a faculty member for two decades, I am thoroughly committed to the notion that the student is the fundamental unit of any university. We could operate this institution without buildings and we could even operate the process of a university without a faculty. We may not provide the function as well, but there is no question that learning could take place without faculty or facilities.

However, one does not have a university if he does not have students. Students, therefore, are the sine qua non of any university. You who have been students retain the same kind of importance and involvement as the institution grows.

Education is not an experience that one has in his life at a particular time. It is a life-long process and it is the function of this institution to provide its students with the ability to carry it out on a life-long basis.

I invite you; no, I urge you to participate actively as an alum to help your university emerge as a major undergraduate institution of academic distinction. Our time is here. The tide is at its full point and we must now move to take advantage of time and tide. The old adage warns against doing otherwise.

Please feel free to communicate directly with the Alumni Director, myself, any member of the adminis-

### 1968-69 Board of Directors



MIKE THEISS PHOTO

The Board of Directors has had its first meeting with President Lee Sherman Dreyfus and Alumni Director Rick Frederick. Left to right, back row, are Frederick, Kenneth B. Willett, Pres. Dreyfus, Sherman Sword, Orland Radke and Robert Konopacky. Front row, same order, Diane Dietzman, Mrs. Norman Wanta and Mrs. Elmer C. DeBot. Miss Dietzman attended for Mrs. Mark Deadman. Carl Vetter was also absent when the picture was taken.

tration or the faculty, on any issue related to this university at any time.

We need you in a very real sense at this time in our development and we hope too that we can provide you with some services which alumni ought to expect from their alma mater. I look forward to meeting each and every one of you at some time during my career at this institution.

Cordially yours,  
Lee Sherman Dreyfus

### Interested In Job Promotion?

Let Dr. Raymond E. Gotham, Director of Placement, know. The Placement office provides national coverage in business, industry and government as well as education. Computerized records can match position requirements with speed. Keep your credentials up-to-date at Room 056, Main Building.



ART CHARLESWORTH PHOTO

Frederic D. Frederick

### First Full Time Director

"Rick" Frederick has been appointed by WSU Pres. Lee Sherman Dreyfus to develop and coordinate alumni activities at Stevens Point, and since July 1 has been at work on his new assignment at the Alumni office. He takes over this responsibility from William B. Vickerstaff who has been named Assistant to the President.

Frederick was Director of Public Information for the University of Wisconsin Center system at Madison. There he was responsible for student recruitment and development programs for two emerging Centers and had overall responsibility for public information programs for 13 others. Previously he had been Coordinator of Radio & Television Public Information for the Centers. In that position he had a great deal of experience in the promotion of special events.

In addition he has served as Director of Public Relations for the Madison Area Association for Retarded Children and as consultant to the Oscar Mayer Co. He has had several articles in professional journals.

(Turn to Page 7, Col 1).

### Reorganizes To Serve WSU And You

There are ambitious plans in the works for a revitalized Alumni Association. Some plans have already become reality.

President Lee Sherman Dreyfus has appointed an advisory Board of Directors to serve a one year term to end August 15, 1969. At that time the Association will elect a Board for the following year. The appointment basis was used for this year so the Board could work immediately with the new director, Rick Frederick.

For the same reason the Board this year is composed of Stevens Point area residents. Hereafter, the election will be countrywide.

Accepting appointment are Mrs. Mark Deadman, Mrs. Elmer C. DeBot, Robert Konopacky, Orland Radke, Sherman Sword, Carl Vetter, Mrs. Norman Wanta and Kenneth B. Willett.

The Alumni Association exists because of the University and has as its basic interests the University's welfare and the development of a mutually beneficial relationship.

Improving contacts with one's alma mater is a matter of communication. The Association can be an important factor in maintaining communication. Alumni clubs, publications and special events are the chief means by which the Alumni office will provide this link.

An Alumni office has been set up at Nelson Hall under the direction of Frederick. Norman E. Knutzen will serve as club coordinator. Mrs. Ellen Specht is publications editor and Mrs. Germaine M. Sward is office secretary.

Frederick and Knutzen will spend much of their time this year helping establish Alumni clubs.

Four publications are planned this year, two issues of *University Alumni News* and two quality magazines. The magazines will offer articles of interest in greater depth than the newspaper can provide. The spring magazine this year will be a 75th anniversary history of WSU. A supplement to the magazines will include news of Alumni.

The 75th anniversary events through the year will provide opportunities for Alumni to return to the University. Frederick is coordinator for the 75th anniversary. He plans to involve the total University in the celebration.

Other Alumni events are Winter Carnival and Commencement. You will get information on them as you did for Homecoming.

Scholarships for outstanding students will be a concern of the Association in cooperation with the WSU Foundation. A student information program will be developed, for students are the future of the Alumni Association.

State and regional WEA conventions afford a chance for reunions. The annual reunion during

(Turn to Page 6, Col. 1)

### Hale Quandt Scholarship Fund

### ALUMNI GAVE GENEROUSLY

The Hale Quandt Scholarship Fund established to honor the late Coach Quandt has been subscribed to by 140 alums and other admirers thus far who have donated \$2,724.00. Hale Quandt died on June 30, but he had this tangible proof of the esteem in which he was held, for the fund was established last March when many of his former athletes returned to do him honor.

An outstanding coach in his 20 years here, his death was a loss not only to this school, but to the entire Wisconsin coaching fraternity.

Don Friday, Sports editor of the *Stevens Point Daily Journal* expressed so well the thoughts of so many when this fine coach died. We regret space permits us to quote

only portions of his July 2 editorial. "The death of Hale Quandt . . . marked the end of an era at Stevens Point State University and deprived the coaching fraternity of one of its most respected, successful and knowledgeable members.

. . . "Hale touched literally thousands of young lives during a career in coaching and teaching that spanned more than 40 years at the high school and college levels. He approached his tasks with unmatched enthusiasm and dedication. His interest in his young proteges often carried beyond the classroom and field of athletic combat, continuing on a personal basis into later life.

. . . "We know of no coach whose

(Turn to Page 6, Col. 1)



# THE CAMPUS IS THE WORLD

## VICKERSTAFF IN VIETNAM AIDS EDUCATION PLANS



William B. Vickerstaff

William B. Vickerstaff, assistant to the president for development, went to South Vietnam this fall at the request of that country's government to help put in operation educational plans for administration, budget, charters and goals for its universities.

President Lee Dreyfus expressed

real pride that the South Vietnamese sought assistance of WSU-Stevens Point to "help them win the other war in South Vietnam."

"We are also proud for Bill that he was specifically named by the Ministry of Education to carry out this mission," said Pres. Dreyfus.

Vickerstaff worked closely with the late Dr. James H. Albertson, WSU's former president and Dr. Burdette W. Eagon, Dean of the College of Education, both of whom worked in South Vietnam, helping with plans for improving Vietnam education. Dr. Albertson headed a team of educators which made recommendations for higher education. A plane crash ended the lives of the nine member team on March 23, 1967.

Dean Eagon finished that team's study and returned twice to Vietnam to plan elementary, secondary and vocational technical school reorganization.

Vickerstaff, as executive secretary of the WSU Foundation, has been involved in the entire program, for it was the Foundation which sponsored the studies, under contract with the U.S. Agency for International Development (AID).

Vickerstaff arranged for the rectors of five Vietnamese universities to study colleges and universities in the United States last fall. He met the rectors at Honolulu and escorted them here, to the White House for a visit with Pres. Lyndon B. Johnson and back to Hawaii.

The academic program planned for the rectors while they were on campus was led by Dr. Eagon and Dr. David Coker, Director of the counseling center.

Vickerstaff's mission, sponsored also by AID, "will help them put into practice some of the ideas they gained here last fall when they met with top people from our faculty. By no means do we want to superimpose upon them a pattern of our system for operating a university."

He will help them choose from America's successful education experiences.

Vickerstaff sees similarities between Stevens Point and Vietnam universities. All have student bodies of less than 7500; all prepare teachers as a primary resource for their country; and all have goals quite comparable.

Vickerstaff was briefed in Washington, D. C. before leaving.

## WSU Chosen Once Again

Twenty Vietnamese educators made this university the initial stop on their visit to the United States to gain insight and understanding of higher education here. The educators were on campus the first week in October.

Aid to International Development (AID), and the Vietnamese university rectors who visited WSU previously, requested that this campus be the place of initial involvement for the program planned by the U. S. Office of Education.

Visiting here were Deans of Colleges representing various specialties, such as law, medicine and education, with some Secretary Generals whose positions roughly parallel those of President Lee Sherman Dreyfus's coordinating officers, Dr. John Ellery and William B. Vickerstaff.

Dr. Ellery and Mr. Vickerstaff worked closely with Dr. David Coker, Director of Counseling Services, who served as program coordinator.

"The program here was a general orientation one related to why the visitors were in the United States and included what we hoped to have them gain as they studied higher education at other institutions related to their specific interests," said Dr. Coker.

The visitors were also given a chance to observe many phases of the university operation here. The educators were especially interested in the policy level for both internal and external university matters, in order to aid them as they endeavor to switch their universities from the outmoded French system to a more applicable one for modern Vietnam.

## Czech National Basketball Team To Play Here

The Czech National Basketball team, a team very much in the running to represent Czechoslovakia in the coming Olympics, will play WSU on Dec. 6 in the Field house at 8 p. m. A first of its kind for WSU, the event will be sponsored jointly by the university and the Stevens Point Kiwanis club.

Every seat will be reserved. Tickets will be available through the University Center, at some local business establishments and from members of the Kiwanis club. Eugene Brodhagen, Director of Physical Education and a member of Kiwanis, is serving as chairman for the arrangements.

The Czech team will be playing a number of teams in Wisconsin. The plan is that an all-star team made up of players from the Wisconsin teams will be hosted by the Czechoslovakian Basketball Federation for a return game the following December. One player would probably be chosen by each school to represent it.

## Faculty News

Several new department chairmen have been appointed. They are Dr. Leon Lewis, English; Dr. Virgil A. Thiesfeld, Biology; Dr. James Bowles, Natural Resources and Donald E. Greene, music.

Major Ancil Leister replaces Lt. Col. Mowrey chmn. of Dept. of Military Science.

Jack G. Cohan is new Director of the Arts and Lectures series.

Paul Rohowitz is new head periodicals librarian.

Melvin Karg has been promoted to assistant director of university housing. He was steiner residence Hall director.

William A. Johnson is new assistant to the Dean of the College of Letters & Science.

Mrs. Helen Corneli has been appointed Director of Freshman English.

Oliver A. Andrews, '53, Associate Professor of chemistry, has been awarded \$500 for excellence in teaching, a citation sponsored by the Johnson Foundation of Racine. He has been on the faculty since 1960.

Miss Carol Marion, assistant professor of history, is faculty chairman, one of few women to hold that office in WSU's 75 year history. She came here in 1965.

## Mutual Academic Assistance

The relationship of this university to Vietnamese higher education is becoming evident in academic as well as administrative areas. Dr. George Becker, WSU Professor of biology, is directing cooperative effort in a new exchange program proposed by WSU.

A collection of Wisconsin fish is now being examined in the oceanographic Institute of Nhatrang, South Vietnam.

In return for the university's gift, Dr. Becker received a collection of books about marine and fresh water fishes found in Vietnam waters. These are French and Vietnamese language texts which Dr. Becker believes are rare in the United States. Some fresh water fish which Vietnamese biologists have been unable to identify are to be sent here also.

## Adolph Torzewski Returns To WSU

Adolph Torzewski, '57, has returned to WSU as Director of General services. He is in charge of purchasing, central stores, mail and carrier service, duplicating, telephone communications, capital goods inventory and janitorial services.

He was previously director of administrative data processing in business affairs at UW-Madison. He has done graduate work at the University of South Dakota.

Join Your Alumni Association  
Now To  
Get All Four Publications  
Planned For The Year

## Arts And Lecture Series

### CONCERT SERIES

The Greg Smith Singers  
Thursday, October 3, 1968  
\$3.50

Olawta Basque Festival of Bilbao  
Friday, October 25, 1968  
\$3.50

Bavarian Symphony Orchestra  
of Munich  
Friday, November 1, 1968  
\$5.00

Abbey Simon, Pianist  
Tuesday, March 4, 1969  
\$3.00

Saar Chamber Orchestra  
Tuesday, April 22, 1969  
\$3.00

All Events in the Fieldhouse

## CORD At WSU

Dr. Paul Cameron Holman is associate director of a cooperative research development organization, CORD, headquartered at WSU. He serves with Dr. William Clements, Director of Research Studies, in the federally sponsored program for state universities here, at La Crosse, River Falls, Menomonie and Whitewater.

Dr. Monica Bainter is on the National Council of American Association of Physics Teachers. She is the only woman on the 27 man board. She is also the only woman to head a physics department at a public university.

Ancil D. Leister, acting chairman of the military science department, has been promoted to Major in the U. S. Army.

## Dr. Edgar F. Pierson Teaching Again

Dr. Edgar F. Pierson retired Sept. 1 as Graduate School dean to return to full-time biology teaching. Dr. Pierson came to WSU 30 years ago, and was biology department chairman for 16 years prior to becoming dean in June, 1963. Dr. Pierson saw the graduate program grow from 8 to 42 courses and from summer classes only, to academic year day and night offerings.

At the time of his retirement of the deanship, Dr. Gordon Haferbecker, vice president for academic affairs, referred to Dr. Pierson as "one of the best teachers on the faculty." He pioneered graduate study, first as a member of a study committee, then as a member of the State College system graduate committee and a chairman of the Stevens Point graduate faculty.

## Arts And Lecture Series

### CHAMBER SERIES

Theodore Ullman, Gifted Pianist  
Tuesday, November 12, 1968

Adonis Puetras, Flamenco guitarist  
Wednesday, December 4, 1968

Beaux Arts Trio  
Tuesday, February 4, 1969

Elisabeth Schwarzkopf, Soprano  
Monday, March 10, 1969

All Events in Main Auditorium  
8 p. m.

\$3.00  
except Elisabeth Schwarzkopf  
\$4.00



# THE WORLD IS THE CAMPUS

## Political Leaders Visit Campus

Most of the presidential candidates spoke here last year. "The campus is where the action is," says President Lee Sherman Dreyfus, and it is expected that some of the country's political leaders will seek out the campus again this election year, for the university campus is a popular forum on the political scene today.

Harold Stassen, Richard M. Nixon, Eugene McCarthy and Vice President Hubert H. Humphrey arrived in that order to speak to large audiences here. Their appearances were sponsored by the student's Political Science Association.

Invitations have again been issued by the Association to the presidential candidates.

Both Gov. Warren Knowles, a Republican, and his opponent, Bronson LaFollette, a Democrat, are scheduled to speak at WSU.

Congressman Melvin R. Laird, who represents the Wisconsin 7th district in which the University is located, has been a campus speaker on many occasions.

WSU will be the scene of a debate October 31 between U. S. Senator Gaylord Nelson, a Democrat, and his Republican opponent, Jerris Leonard.

## Robert S. Lewis Selects Faculty Alumni Committee

Robert S. Lewis is chairman of the Faculty Alumni committee. He has appointed three members of the faculty who are also Alumni to serve on the committee. They are Mrs. Phyllis Ravey, Duaine Counsell and Robert Englehard.

The four will function as a liaison committee to give assistance to the Alumni Association wherever needed. They will provide faculty representation at all major university functions involving the Alumni.

## Arts And Lecture Series

### LECTURES

Drew Pearson — Washington columnist  
Monday, October 21, 1968  
Harry Golden — Best selling author  
Sunday, November 24, 1968  
Bill Sands — founder of Seventh Step Foundation  
Wednesday, December 11, 1968  
Saul Bellow — Distinguished author and Playright  
Thursday, March 13, 1969  
All lectures in Main Auditorium  
8 p. m.  
\$2.50

### Alumni News Notes

Your reaction to this section will be one of disappointment, for there are few alum news notes. We know you appreciate news of former classmates, and we will send you that news.

We plan a supplement twice a year of news notes only. We will limit it only by the amount of news you send us.

## Pres. Dreyfus Invited To Speak At Polish University

President Lee Sherman Dreyfus and his Ruroplex idea, a unique regional planning concept, are receiving widespread attention these days, even beyond the confines of the United States.

The most distant recognition, thus far, came in the form of an invitation to lecture on the Ruroplex at Katolicki University in Lubelski, Poland.

The invitation was issued by Rector Vincent Granat of the Catholic University in Lublin who wanted Pres. Dreyfus to take part in the 50th anniversary celebration of the Polish university this year. Rector Granat felt that the Ruroplex would be of great interest to "our sociologists and town planners."

Dr. Wacław Soroka, Professor of History at WSU, is a graduate of the Catholic University in Lublin. He had told the rector there also of Dr. Dreyfus' interest in planning for a center of Polish studies here.

In another publication this year, Alumni Association members will learn more about the Ruroplex concept which is interesting many areas similar to central Wisconsin, the area for which it was first devised, and where it is already in partial operation.

## University 75th Anniversary

A committee to plan 75th anniversary observances at the University between now and next spring has been formed, with Orland Radke, Director of Extended Services as chairman.

The members of his committee are all Alumni. They are Don Benz, Mary Jo Buggs, William Cable, Warren Lensmire, all of the faculty; Elizabeth Pfiffner DeBot, Hazel Gotham and Senator William C. Hansen, former faculty and president emeritus; Sherman Sword, Stevens Point Daily Journal editor; James Stoltenberg, Merrill Superintendent of Schools; and Warren Kostroski

and John Breneman, recent student senate officers.

Ex-officio members are Paul Schilling, student, William B. Vickerstaff, Director of Development, and Rick Frederick, Director of Alumni.

Frederick will coordinate the activities. "We will use the student-selected homecoming theme '75 Dynamic Years' to identify the anniversary," said Frederick.

Many events on campus will call attention to the anniversary and residents of the Ruroplex cities in central Wisconsin will be encouraged to participate in the year-long programs.

## Harpsted And Snowden In Africa

Two WSU professors are at work in Africa this year to help with agriculture and education programs. They are Dr. Milo Harpsted, Professor of Natural Resources and Dr. Terrence Snowden, Professor of Education.

Dr. Harpsted is in western Nigeria where he will be a soil researcher and teacher for the next two years. His assignment is under the U. S. Agency for International Development (AID) at the Univ. of Ife.

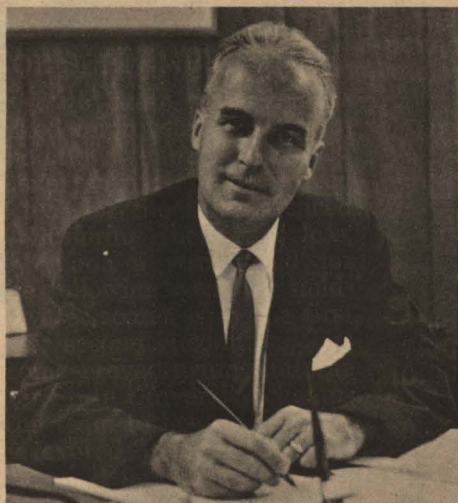
He will work in a field station situation on land classification and management to help Nigerians develop their farmland.

Dr. Snowden has been in Kaduna, capital of northern Nigeria, since the summer of 1967 on a teacher education project sponsored by the Ford Foundation and the U. S. Agency for International Development. He works with the Nigerian Minister of Education; serves on a board of studies that establishes the program for colleges which educate teachers and on a board of inspectors to evaluate educational programs. The goal is to establish programs that are suitable for the needs of Nigeria.

### Pointers and Iris's Needed

The Alumni Publications Office is trying to collect a series of bound volumes of all the Pointer newspapers and the Iris annuals. Would anyone care to donate theirs to our empty reference shelves?

## Three Major Appointments



Dr. William James Hanford

Dr. William James Hanford, 48, is new Dean of the College of Fine Arts. An educational television specialist, he was director of Delaware's ETV network. He replaces Dr. Robert Cantrick, now director of fine arts and humanities at New York State College, Buffalo.

He was formerly on the faculty at Wayne State University and Oakland University. Besides other teaching positions on prep and college level, he has had public relations and business experience.

In 1962-63 he was a member of the mass communications department at Wayne State, announcer and program host for two television stations as well as project director for an ETV system in the Michigan State Prison.

Dean Hanford holds the B. A. degree in philosophy and English from Immaculate Conception House of Studies, Chicago, M.A. from Sacred Heart House of Studies, Louisville, M.A. and Ph. D. from Wayne State University.



Dr. John Blaise Ellery

Dr. John Blaise Ellery, 48, who has girdled the globe as a student, soldier or educator, is Assistant to President Lee Sherman Dreyfus.

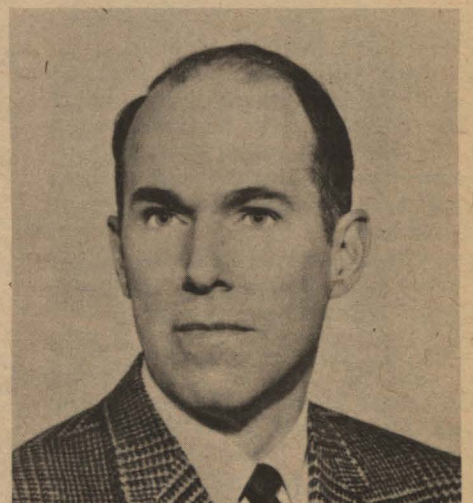
Dr. Ellery's last assignment was acting dean and English department head of Njala University College, Sierra Leone, West Africa.

He fills a position left vacant when Dr. Kurt Schmeller became President of Queensborough Community College, New York.

Dr. Ellery has an AB degree from Hamilton College, an MA from University of Colorado and a Ph. D. from University of Wisconsin-Madison. He has taught at the University of Colorado, University of Wisconsin-Madison, University of Iowa, Alabama College and Wayne State University.

For the past two years he has been on leave from East Tennessee State University to serve the United States Agency for International Development in Sierra Leone.

Dr. Ellery served a decade in the military as both soldier and sailor, was twice wounded and decorated for valor.



Dr. Winthrop C. Difford

Dr. Winthrop C. Difford, 46, is the new Dean of Graduate studies and Director of summer school. He was formerly a New England geology professor and academic administrator.

A native of Liverpool, Ohio, Dr. Difford has a B. S. degree from Mt. Union College, an M. S. from West Virginia University and a Ph. D. from Syracuse University. He is a veteran of World War II and the Korean conflict, and holds the rank of commander in the United States Navy Reserve.

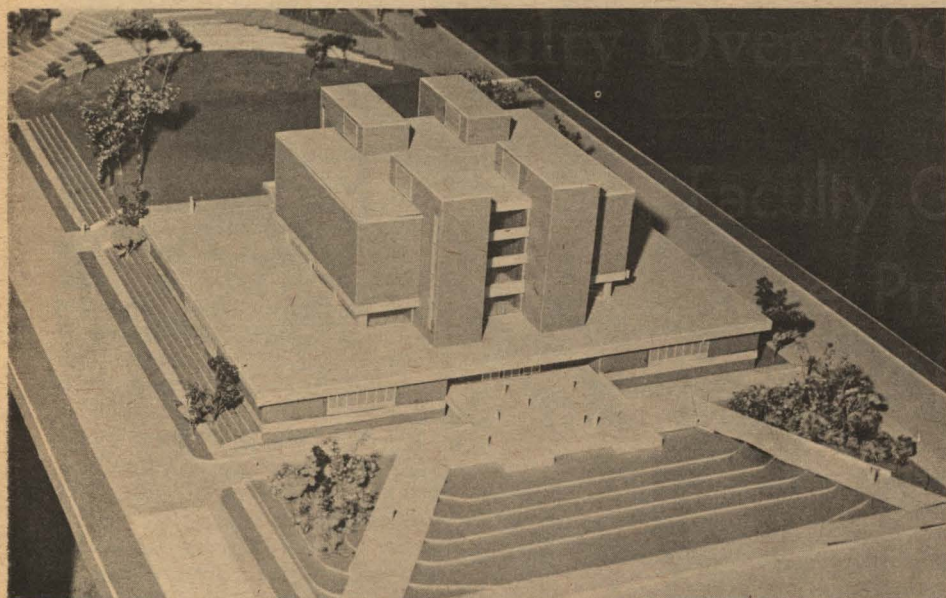
He comes to WSU from the University of Bridgeport in Connecticut where he taught earth history and geology on both graduate and undergraduate levels. He served also as assistant dean and director of graduate studies there.

In addition Dr. Difford has had experience as an intern in academic administration for the E. L. Phillips Foundation, as professor and chairman of the geology department at Dickinson College, and as assistant area engineering geologist in Nebraska.



# Student Numbers Spur

Students - 6823



RAY SPECHT PHOTO

The Learning Resources Center will face Reserve St. between Franklin and Portage. This \$3.3 million dollar building is now under construction. Six stories tall, it will be the highest building on campus. Behind it will be a landscaped mall connecting it with the Fine Arts building.

## Building Projects At WSU

by John Anderson

Giant earth movers chug and scores of men work daily on multi-million dollar building projects at the University.

Currently under construction are \$3.3 million Learning Resources center; \$4.1 Fine Arts building; \$1.5 million addition to the fieldhouse; and an \$800,000 residence hall.

Expected to get underway within a year is a \$2.5 million Classroom center, \$318,200 maintenance shop, and \$396,000 central store.

Headed toward reality is a \$3 million water pollution laboratory which will be staffed by 100 Ph. D. scientists and 75 technicians.

In July, Uncle Sam paid 10 cents an acre for 9.46 acres in the heart of the campus. The \$1 transaction for the building site "is a real indication the laboratory will become a reality," President Lee Sherman Dreyfus said.

Construction is expected to begin in 1970, the completion date for facilities started this summer.

The lab will serve a seven state area and be used in investigating pollution of lakes and rivers in the upper Mississippi River basin, especially aging of lakes by nutrients.

Dr. Paul Yambert, conservationist and Dean of the College of Applied Arts and Sciences, is faculty liaison for the project. The lab will be the fourth such in the country.

Attention was drawn to this most extensive building program in the University's history at unusual ground breaking ceremonies this summer. In July, when construction was to begin on the Learning Resources Center, President Lee Sherman Dreyfus and Dr. Frederick Krempel, center dean, dispensed with the traditional gold shovel ceremony.

Instead, the president gave a short address atop a bulldozer, then steered the machine to turn the first bits of dirt.

A few weeks later, more than 125 persons representing Marshfield, Wisconsin Rapids, Wausau, and Stevens Point turned out to witness a demonstration symbolizing the cultural explosion to be effected by the new Fine Arts building.

Jacob Flatoff, 73-year-old blaster from Stevens Point, set off a small stick of dynamite for the ground breaking rites.

New Dean of Fine Arts William Hanford said the charge, which sent sand 15 feet skyward, represented

the explosion of culture this beautiful building will help create in central Wisconsin.

Although little fanfare marked the beginning of construction on the physical education addition, the facilities are expected to be a hub of community activity. Its gymnasium will seat more than 6,000 persons, about twice as many as can be accommodated in the present gym.

Additions will be on the north and west ends of the 7-year-old building. "The 150 by 110 foot gymnasium in the west part is a desperately needed area for instructional activities," according to Eugene Brodhagen, chairman of the physical education department.

Raymond Specht, Director of campus planning, said the needed space was determined by tabulating anticipated enrollment figures at WSU and physical education facilities to be needed in the early 1970's for the more than 10,000 students expected here.

The Fine Arts building will be two stories and contemporary in design. It will have one music auditorium to seat 350 persons and a similar facility for drama to seat 400 persons.

The Learning Resources center will be 6 stories, including the ground level, and be the tallest building on campus.

The present center would undergo a \$327,000 remodeling job and be put into use either as classrooms or administrative offices.

The new building will house instructional materials plus books and periodicals to "help students learn and instructors teach," Dr. Krempel said.



RAY SPECHT PHOTO

The Classroom Center is at the corner of Fourth Ave. and Isadore St. Most liberal arts classes are held here. There are classrooms of many sizes to fit varying needs. The Dean of the College of Letters and Science, Dr. Warren Jenkins, has his offices here and many teachers have offices in the Center. The top floor is all office space.

Enrollment at WSU-Stevens Point nears the 7000 mark this year. Registrar Gilbert Faust tallied 6,823 as the official figure at the end of the second week of school in September.

This figure is 916 over last year when 5,907 students registered.

Faust expected Stevens Point to remain fourth in enrollment in the WSU system.

Audio visual facilities, including a television studio, and some documents will be kept on the ground level; general circulation, reserve, and reference materials on second floor; offices and periodical collections on third floor; and basic stack collections and study facilities on the three remaining stories.

Also planned are several hundred private study booths, small group study rooms, lounge-type reading, and study areas, centralized catalogue, elevators, open stacks in the library, and an instructional television center.

Dr. Krempel said the modern-type design of the building will have indented glassed walls on the third level and tower-like areas extending three more stories skyward.

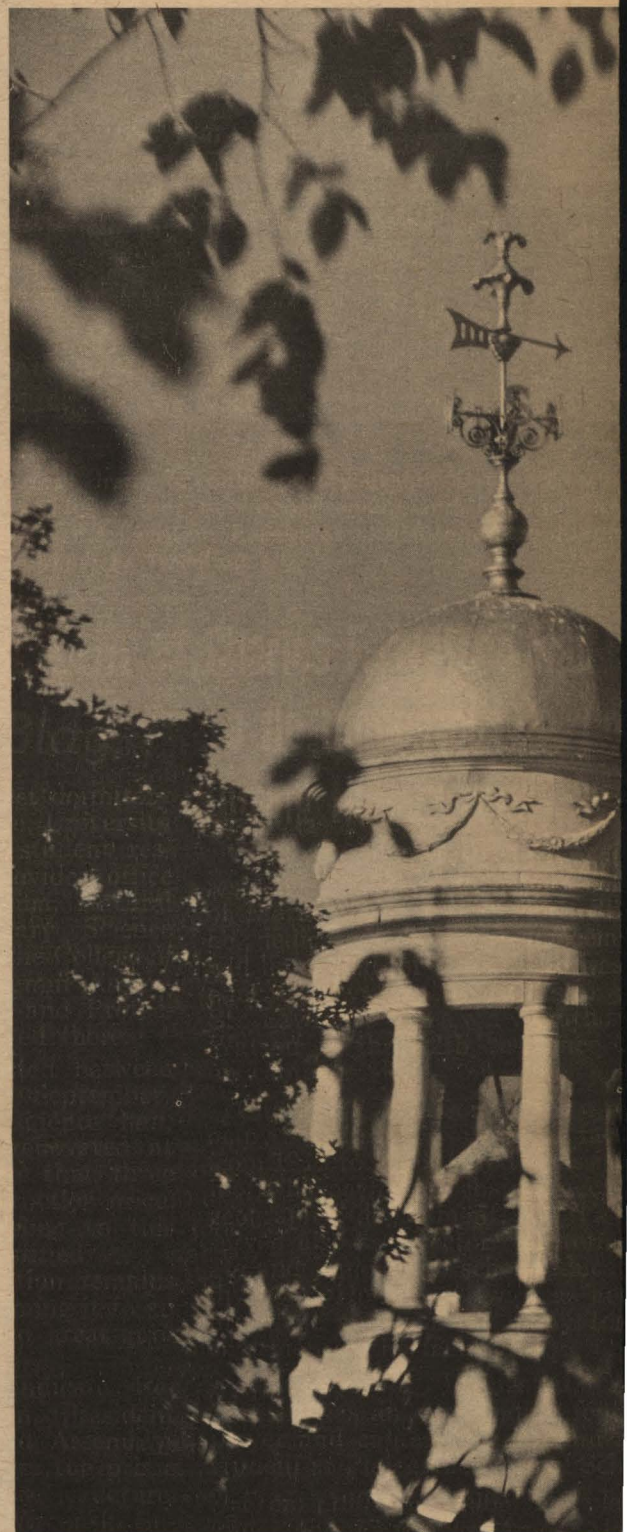
A large, landscaped mall will join the two buildings on an area where Stanley St. formerly dissected Portage and Franklin.

Completion of these facilities and new classroom center, maintenance building, and central stores will by no means mark the end of construction for the campus. New buildings will come as new campus needs arise.

A \$1.5 million construction project, to double the size of the physical education building is underway and should be completed in Sept. of 1969.

Plans were drawn by Carl Shubert and Associates, La Crosse, the firm which designed the present physical education facilities.

The additions will be on the north and west ends of the seven-year-old building. Plans call for a 180 by 110 foot gymnasium in the west side main addition, "desperately needed area for instructional activities," according to Eugene Brodhagen,



1894-95 75 Dynar

chairman of the physical education department.

The needed space was determined by tabulating the anticipated enrollment figures at WSU and physical education facilities to be needed in the early 1970's for the more than 10,000 students expected.

An annex to the diversified sports area will be located on the north end to provide in-door space for all track events. The 120 by 60-foot addition will make room for a four-lane, synthetic surfaced oval track more than twice as large as the present track. Within this area will be two tennis courts, an archery range, a golf driving area, and baseball pitching and batting cages.

The main addition, with a flat roof, will have two floors — the first level parallel with the basement of the present building. A gymnasium, a large foyer, and locker and shower rooms for the main floor. About 4,000 lockers are expected to be installed.

Mr. Brodhagen said the gymnasium will be an ideal place to hold university cultural programs now drawing large audiences. There will be space for about 6,500 persons compared with seating for less than 3,000 in the present gymnasium.

On the second floor, parallel with the first floor of the present build-



# Campus Growth

Explosion In  
Education  
Culture  
Construction

## Faculty Over 400

### Faculty Grows, More Programs Being Offered

The explosive growth of WSU's student body to nearly 7,000 students this fall has resulted in a faculty of 388 full time and 27 part time people, with more positions to be allocated if enrollment is above estimate. In addition there are some positions that are self-sustaining under federal projects, plus those on the ROTC staff and in Civil Defense education.

The emphasis at WSU is and will continue to be essentially undergraduate in nature.

The graduate program is a fast growing one, however, with the Master of Science in Teaching degree granted in increasing numbers. "An M.S. degree in Speech Pathology and Audiology is expected to get early approval," states Dr. Gordon Haferbecker, Vice President for Academic Affairs.

Graduate majors are available in a number of education and liberal arts fields, and more are in the planning or approval stage. Forty-two graduate courses are offered.

Under consideration are the M.A. in English, the M.S. in biology, the M.A. in history and the M.S. in home economics education.

"It is expected that a Master's in business administration will be added within the next several years to serve business and industry needs in the University area; perhaps as a cooperative program with UW-Madison at first," said Dr. Haferbecker.

A major in forestry in the Department of natural resources is being offered, with the first degree to be awarded at the end of the first semester this year.



ROBERT A. DORN PHOTO

The Fine Arts building, of dramatic contemporary design, is going up now, west of the Learning Resources Center between Franklin and Portage Streets. The view here faces toward the Learning Resources structure across the mall. This two story building will cost \$4.1 million.

### Nelson Hall Dorm Now Office Bldg.

Nelson Hall, the oldest dormitory in the Wisconsin State University system is no longer a student residence. This fall it provides office space for English, Drama, Natural Resources and Military Science teachers. The Dean of the College of Applied Arts, your Alumni Association and the Security and Protection staff are also housed there.

Nelson was constructed between September, 1915 and September, 1916. To remain a residence hall, it would have to be renovated at a cost of \$325,000, more than three times the original construction price. The state said remodeling to this extent could not be justified.

The structural condition remains satisfactory, so transforming it to an office building posed no great problems.

University records indicate Regent George B. Nelson, President John Francis Sims, and Assemblyman Anton Krembs were the prime proponents of the new structure.

Mr. Nelson, later a Wisconsin Supreme Court justice, was selected as namesake for the structure.

The women who lived at Nelson Hall referred to a portrait of Mr. Nelson, which hung in the lounge, as "Uncle George."

Only two years after the hall opened, U. S. involvement in World War I had some local implications. Nelson was transformed into living quarters for 62 men in the army training corps. In 1943, in the middle of World War II, women made way for U. S. Air Force trainees.

### Charles F. Watson Hall To Be Dedicated During Homecoming

The new 269 bed, four story residence hall located at the corner of Maria Drive and Isadore St. to be dedicated during Homecoming, will be named for a man who was an educator, writer, football star and St. Lawrence Seaway authority. Watson is the 12th residence hall on campus.

Charles F. Watson, known to many as "Frank," was on the faculty from 1913 to 1946. Hired as assistant football coach and chairman of the geography department, he later served also as director of intermediate and junior high school education divisions. He served twice as acting president and was for many terms, chairman of the faculty.

A native of Livingston, Wis., Watson was an outstanding football player and captain of his team as a student at Platteville Normal School.

From 1904 to 1906 he played under the famous Amos Alonzo Stagg at the U. of Chicago when the Maroons were still in the Big Ten conference. He was on the 1905 championship squad that scored 245 points in 10 defeatless games. One opponent made one touchdown against the Maroons that year.

Mr. Watson was one of the earliest champions for the St. Lawrence Seaway. In 1921, almost 30 years before legislation was introduced for the water route, he was a Wisconsin delegate to the National Rivers and Harbors Congress in Washington, D.C. where the seaway was a major topic.

Mr. Watson maintained his scholarly interest in the seaway the rest of his life, writing and speaking about it, even in his retirement years.

Dr. Gordon Haferbecker, WSU's Vice President for Academic Affairs said of Mr. Watson: "His former students remember him as a professor always willing to give them advice and counsel. He took great pride in the success of Central State Teachers College graduates."

A scholarship fund was established in Mr. Watson's honor by Stevens Point businessmen about 12 years ago.

## ic Years 1968-69

### University Lab School

Dr. John C. Pearson, University Laboratory school director, extends an invitation to alumni to visit the school where a new Five Year Plan is in process of development, with programs he believes will interest teachers. Observers are welcome anytime.

"Complete individualization of instruction using computers to assist is the goal of the new program," said Pearson. The faculty stresses research, experimentation and demonstration. Closed circuit television and video taped classes will be used extensively.

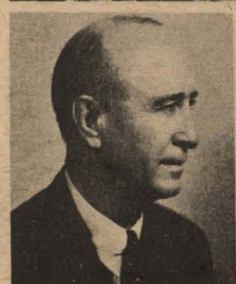
All University departments now use the facilities of the "Campus School," with the Education department mainly sending students to get laboratory experience before they do their student teaching elsewhere.

Classes range from the new pre-kindergarten nursery school through the sixth grade, with children chosen from a wide range of family income and background. There are special classes for children of average or above intelligence who are gross underachievers.

A Learning Disorders clinic is among the programs now under study.



JIM PIERSON PHOTO



Watson

This is the new Charles F. Watson Hall, residence for 269 students at the corner of Maria Drive and Isadore Street. It is the 12th residence hall on the WSU campus, and there is another, as yet unnamed, under construction.

Join Your Alumni Association  
Now To  
Get All Four Publications  
Planned For The Year



# 1968

## Fall and Winter Sports Roundup

### Basketball

Returning are Mike Hughes, Ken and Tom Ritzenthaler (Baraboo), Palmer Clements (St. Pt.), Rob Westphal (Green Bay), Russ De Fauw and John Harris (Beloit), and Dennis Carberry (Waunakee). Possibilities are Jim Menzel (St. Pt.) and Bill Wessenberg (Portage). The conference will be tough and it will be very even but with this personnel, the Pointers should be in the race all the way," says Coach Robert Krueger.

### Swimming

The whole team is back: Jeff Pagels (Manitowoc), Bob Maass (Rhinelander), Rob Simkins (Pt. Edwards), Bill Mc Kenzie (Rhinelander), and Mark Brodhagen (St. Pt.) Newcomers with good high school records are Rod Schraufnagle (Rhinelander), John Tepper (Greenfield), Bill Schutten (Greenfield) and Jack Sutliff (Rhinelander). Kevin Kelly, transfer from U. of Iowa, was 1966 100 yd. backstroke record holder in the state.

### Wrestling

Coach Wayne Gorrell looks for more consistency from his wrestlers and a higher conference finish this year. Returnees include Terry Goldsmith (Mosinee), Bill Zander (Mt. Horeb), Mike McCartney (Westfield), Tom Schroeder (Sheboygan), Andy Spees (Wis. Rapids), Tom King (Rhinelander), Jim Notstad (Cambridge), Ed Steigerwaldt (Tomahawk), Scott Bay (Kaukauna), Steve Boehm (Wis. Rapids), Erich Opperman (St. Pt.), Dave Garber (St. Pt.) and Dan Bay (Kaukauna).

### Cross Country

Returning lettermen are Joe Gehin (Belleville), Larry Hetzel (Amherst), Terry Amonson (Rhinelander), Bob Ferry (Wauwatosa), Wendell Krueger (West Allis) and John Petersen (Racine). It is the youngest squad in years and Coach Bob Bowen thinks it may upset the plans of its veteran competition for top honors.

### Gymnastics

WSU's newest sport starts its third season this year. Coach Bob Bowen has a fine group of freshman hopefuls, and veterans John Schlice (St. Pt.), Gary Schneider (Milwaukee), Russ Morey and Steve Koester (Mequon) are back. Last year's freshmen, Steve Zelig (Appleton), Paul De Chant (Thiensville), Mike Casey (Milwaukee), Russ Sciborski (Milwaukee), Scott Schultz (Appleton), and Dick Vandenberg (Green Bay) should bolster the squad. The Pointers look for their best year, but they are up against teams that have also grown.

Join Your Alumni Association  
Now To  
Get All Four Publications  
Planned For The Year



JIM PIERSON PHOTO

These are the men who came out for football this season at WSU-Stevens Point. From this group, Coach Duaine Counsell, third row left, has molded the team he will put on the field today at 1:30 p. m. against WSU-Superior.



Hale Quandt

## Quandt Scholarship (Cont.)

knowledge of athletics, particularly basketball and football, surpassed that of Hale's. He knew the sports inside out and delighted in matching his theories of offense and defense against rivals in his profession.

"Hale's winning record of nearly 60 per cent achieved during his many years of coaching at all levels speaks for itself. Few coaches in the country at the smaller school level can match this extended record of success."

Of the scholarship fund, Friday wrote: "The fund in some small measure will perpetuate Hale's ideals and serve as an eternal remembrance of the man and what he stood for. It will help many student-athletes in coming years complete their college educations and, more important, provide future coaches and leaders who will pass on to youth the lessons of sportsmanship and fine character traits possessed in abundance by Hale Quandt. Nothing would give Hale a greater satisfaction."

Anyone wishing to contribute to the fund may send donations to Richard Berndt, 1455 Water St., Stevens Point, Wis. 54481.

## Alumni Reorganization (Cont.)

the Milwaukee convention, Nov. 7-8, will be from 12 noon to 6 p. m. in the Ramada Inn.

President Dreyfus plans to attend and May Roach tells us she will be there. University faculty will be invited.

A membership campaign is planned to begin at the Homecoming Alumni banquet. Attractive pins and membership cards have been ordered. A WSU-Stevens Point display is available for Alumni club meetings and other related events.

Alumni records will be a service available to alums on request. A biennial directory is planned.

Campus tours will be provided for returning alums.

World-wide travel tours are being considered to foster fellowship and pocket book savings.

# Football Roundup As We Go to Press

For the first time in WSU's history the Pointers are playing a 10 game schedule, with Hamline and St. Norbert's the non-league foes. The WSU conference also starts a round robin schedule this year.

Coach Duaine Counsell has 25 lettermen back, but not too many are "proven veterans." He has been busy rebuilding the offensive line where Dan Bay is the only regular.

From an experience standpoint, the team shapes up best in the offensive backfield and defensive line.

Last year the team finished second to Whitewater with a 6-2-1 record overall and a 6-1-1 in conference play.

### AS OF SEPTEMBER 27

As we go to press, the Pointers show marked improvement, particularly in the offensive unit.

The opener with Hamline proved a rugged test for the inexperienced Pointers. Suffering their first loss, 41-0, they made a strong bid for victory the following week by holding Whitewater scoreless in the first half of their second encounter. The final outcome proved again that the Whitewater State University champs are still the team to beat.

Heavily favored St. Norbert's narrowly escaped defeat last Saturday at West DePere in the last non-conference game for the Pointers.

Coach Counsell's Pointers had a much improved offense. Of particular interest for Pointer fans was the fact that Stevens Point controlled the ball for more plays than the Knights.

Defensively, however, Point had trouble containing St. Norbert's strong running game. Larry Krause and Jim Maier, the Knights' running backs, consistently smashed through the line and around the ends for good gains.

Bob Main and Clarence Wiechowski were two of the standouts for the Pointer offensive unit. The 6-2, 189-pound Wiechowski caught three passes for 28, 24, and 12 yards from quarterback Main.

With just over two minutes left in the game, Point took over on their 20 and moved steadily down the field to score.

Quarterback Main connected on five passes in the drive and was helped by a 15-yard interference penalty against the Knights.

The Pointers, playing without the services of running back Bob Rohde, a 220-pounder who suffered a bruised hip in practice, still showed good

running strength.

The victory left St. Norbert's a 5-4-1 edge in the series which dates back to 1931. This was the first meeting of the two teams since 1955.

On Saturday the 28th, the Pointers host LaCrosse for their first home game at Goerke Field.

Point travels to Eau Claire on October 5 for the fifth game of the season.

The Homecoming game pits Superior against the Pointers on October 12 at 1:30 p. m. Point is expected to make a strong showing while relying heavily on the passing combination of junior quarterback Main and sophomore split end Wiechowski, along with the hard running 225-pound senior fullback John Freiman and running back Rohde.

## Homecoming Events

Friday, Oct. 11

Holiday Inn

6:30-7:30 Cocktail Hour  
7:30-9:30 Alumni Banquet  
10:00-12:00 Dixieland Dance

Saturday, Oct. 12

9:00 a. m. Alumni Registration  
Tent-DeBot Center  
Homecoming Parade  
Sandwich Lunch at  
Registration Tent  
1:30 p. m. Football Game  
4:00 Alumni Reception  
LaFollette Lounge  
University Center  
"S" Club Alumni  
Banquet-Stevens Point  
Country Club  
8:00 Homecoming Dance  
University Fieldhouse

If you didn't make it this year, plan now for next. You missed a good time.

## Football Schedule

1969

Sept. 6	Hamline	Home
Sept. 13	Whitewater	Home
Sept. 20	Bemidji	Here
Sept. 27	La Crosse	Away
Oct. 4	Eau Claire	Home
Oct. 11	Superior	Away
Oct. 18	Stout	Home
	(Homecoming)	
Oct. 25	Oshkosh	Away
Nov. 1	River Falls	Home
	(Dad's Day)	
Nov. 8	Platteville	Away

## Football Schedule

1970

Sept. 12	Parsons	Away
Sept. 19	Whitewater	Away
Sept. 26	St. Norbert's	Home
Oct. 3	La Crosse	Home
Oct. 10	Eau Claire	Away
Oct. 17	Superior	Home
	(Homecoming)	
Oct. 24	Stout	Away
Oct. 31	Oshkosh	Home
Nov. 7	River Falls	Away
Nov. 14	Platteville	Home
	(Dad's Day)	



# HOME COMING



FLORIAN KLASINSKI PHOTO  
Robert H. Krueger

## WSU's New Athletic Director

Bob Krueger is new athletic director at the University, appointed by Pres. Lee Sherman Dreyfus to succeed Hale Quandt who died June 30.

Krueger, 45, was Quandt's choice to follow him as basketball coach in 1962. Krueger will continue in that post this year. His teams here have an overall record of 72 wins and 57 losses for a win percentage of .588. He ended out of first division only once in his six years as cage mentor.

A star high school athlete in his hometown, Fort Atkinson, he earned six letters and graduated with scholastic honors.

At UW-Madison he was on the 1941 Badger quintet which won both Big Ten and NCAA championships under Coach Harold (Bud) Foster.

He has both bachelor's and master's degrees in physical education from UW-Madison. He served 35 months in the Air Corps.

Krueger coached at Columbus, La Crosse Central and Janesville High Schools before coming to WSU. He was Janesville's most successful coach, racking up four league championships, finishing out of first division only once in nine years.

Bob is married and has five children.

## Alumni Director (Cont.)

After three months in the new position, Frederick speaks with enthusiasm of his work with the WSU Alumni:

"Fortunately, we had a good information program underway here before I came in, thanks to Bill Vickerstaff and his predecessor, Ray Gotham. We are now in a position to increase this. We hope we can go beyond keeping you informed and stimulate enthusiasm so that each alumnus will become personally involved in our expanded programs. There is no doubt that an era of challenge lies directly ahead for this University, but with combined University and Alumni support the Association should become the most dynamic and worthwhile arm of WSU."

A 1966 graduate of the University of Wisconsin - Madison, Frederick earned a bachelor's degree with a speech major and did graduate study in radio and television.

Frederick and his wife, the former Judith Rundell, are natives of Madison. Mrs. Frederick, also a UW-Madison graduate, is a teacher of the mentally retarded in the Stevens Point public school system. Their home is at 2260 Main St., Stevens Point.

## Sports Calendar

Football		
Sept. 7	Hamline	Away
Sept. 14	Whitewater	Away
Sept. 21	St. Norbert	Away
Sept. 28	La Crosse	Home
Oct. 5	Eau Claire	Away
Oct. 12	Superior (Homecoming)	Home
Oct. 19	Stout	Away
Oct. 26	Oshkosh	Home
Nov. 2	River Falls	Away
Nov. 9	Platteville (Dad's Day)	Home

Cross Country		
Sept. 24	UWM-Marquette	Marq.
Sept. 28	Whitewater-Oshkosh	Osh.
Oct. 4	Platteville-La Crosse	Point
Oct. 16	Mankato-Winona	Winona
Oct. 19	Riv. Falls-Eau Claire	EC
Oct. 25	Stout-Superior	Point
Nov. 2	Conference	La Crosse

Basketball		
Dec. 3	Stout	Away
Dec. 4	Winona	Home
Dec. 6	Czech National	Home
Dec. 7	St. Mary's	Away
Dec. 10	Whitewater	Home
Dec. 13	Superior	Away
Dec. 14	River Falls	Away
Dec. 18	Platteville	Home
Dec. 21	Lea College	Away
Dec. 27	Beloit Tournament	
Dec. 28	Beloit Tournament	
Jan. 7	Oshkosh	Away
Jan. 22	St. Nobert	Away
Jan. 25	Eau Claire	Home
Jan. 29	La Crosse	Home
Feb. 1	Stout	Home
Feb. 3	Whitewater	Away
Feb. 7	Superior	Home
Feb. 8	River Falls	Home
Feb. 19	Platteville	Away
Feb. 22	Oshkosh	Home
Feb. 26	Eau Claire	Away
Mar. 1	La Crosse	Away

Gymnastics		
Dec. 13	Marquette	Marquette
Jan. 8	Milw. Tech. College	Point
Jan. 25	St. Cloud	St. Cloud
Jan. 31	Geo. Williams College	Downers Grove, Ill.
Feb. 1	River Falls-Platteville	Platteville
Feb. 8	Superior-Oshk.	Oshkosh
Feb. 15	La Crosse-Stout	Stout
Feb. 21	Eau Cl.-Whitewater	Point
Mar. 14	Conference	Oshkosh
Mar. 15	Conference	Oshkosh

Baseball		
Apr. 15	Oshkosh	Home
Apr. 19	Whitewater	Home
Apr. 25	La Crosse	Away
Apr. 26	Platteville	Away
May 6	Superior	Home
May 10	Eau Claire	Home
May 16	Stout	Away
May 17	River Falls	Away

Swimming		
Dec. 7	Titan Relays	Oshkosh
Dec. 14	WSUC Relays	La Crosse
Dec. 21	College Swim	Fort Lauderdale
-29	Forum	St. Paul
Dec. 24	Macalester Col.	Winona
Jan. 25	Winona	Downers Grove, Ill.
Jan. 31	Geo. Williams College	Platteville
Feb. 1	Triangular Platteville-St. Pt.-River Falls	
Feb. 7	Triangular St. Pt.-No. Michigan-Michigan Tech.	St. Point
Feb. 8	Triangular Oshkosh-St. Pt.-Superior	Oshkosh
Feb. 12	Lawrence U	Appleton
Feb. 15	Triangular Stout-St. Pt.-La Crosse	Menomonie
Feb. 21	Triangular St. Pt.-Eau Claire	St. Point
Feb. 28	Whitewater	
Mar. 1	WSU Conf. Championships	Superior
Mar. 20 to 22	N.A.I.A. Swimming & Diving Championships, Geo. Williams College	Downers Grove Ill.

### Duaine K. Counsell Head Football Coach

Earned a B.S. at WSU-Stevens Point, M.S. at UW-Madison, and has done post graduate work at U. of Kentucky, U. of Oklahoma and Indiana U. He came to Point in 1958 after coaching outstanding teams at Wisconsin Dells and West Allis Central.

### Bil Burns Offensive Line

He earned a B.S. at WSU-La Crosse, M.S. at UW-Madison and has studied toward the doctoral degree at Colorado State College. All Conference twice at La Crosse, he played in the 1954 Cigar Bowl. Before Point, he coached at La Crosse State, UW-Madison, and UW-Milwaukee.

### Wayne Gorrell Defensive Line

Earned a B.S. at WSU-La Crosse and M.S. at U. of Colorado. He coached and taught previously at Chetek, and at WSU-La Crosse.

### Ronald Steiner Offensive Backfield

Earned a B.S. and M.S. at UW-Madison. A three year letterman, he played in the 1960 Rose Bowl game. He has coached at Fennimore, Ispeming, and Winona State College.

### Donald Hoff Defensive Secondary

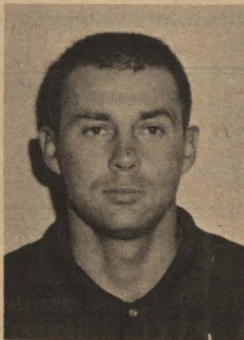
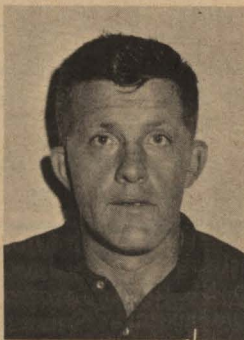
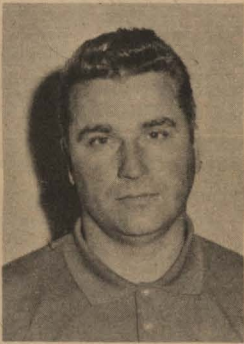
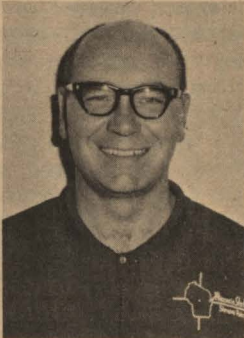
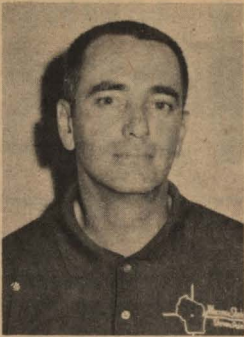
Earned a B.S. at WSU-Platteville, M.S. at UW-Madison and is a candidate for the doctorate at U. of Utah. Coached at Lodi, Racine County Ag., Brillion and Portage before Point. Was given Coach of Year Award in 1959 by Appleton Post Crescent and in 1960 by Madison Capitol Times.

### Peter Lynn Kasson Freshman Football Coach

Earned a B.A. at Ripon, M.S. at UW-Madison and has done post graduate work at Indiana U. He was on the Associated Press Little All American, 1957 and 1958. He was assistant freshman football coach at UW-Madison in 1959 and also coached at Fort Lawton in Seattle and at Nekoosa High School.

### Dick Behnke Frosh Defense

Earned a B.S. at Winona State College, M.A. at Northern Michigan U. and has done doctoral study at Indiana U. He coached at Weyauwega and Reedsville before coming to Point.





# NORM'S NOTES



DON WARNER PHOTO

## "Do You Remember Me?"

These sincerely spoken words have greeted me for years as I have traveled from coast to coast and throughout our state. I have come to know that the questioner feels happy and proud that he is a "Pointer."

It has been my privilege to meet so many of you, and as the years roll along this greeting has become more firmly rooted to the memories of good old S.P.N., Central State Teachers College, Wisconsin State College, and now to Wisconsin State University which has grown so tremendously.

This letter is my privilege in continuing this wonderful association in greeting you and meeting you through the medium of our newly formed, greater Alumni Service. By means of a carefully formed and efficiently operated organization it will become a strong, live, and helpful bond between you and your university. We plan to keep in touch with you through more frequent and specific information as to what is happening and going to happen at your rapidly growing institution. You will want to come and see it. Not only this, but we are planning to meet you through the organization of Alumni clubs all over the country wherever there are enough of you in an area, and we will see you at various conventions.

We want especially to invite you to the Milwaukee WEA convention in November, to meet you at Wausau early in March, and at our 75th Anniversary celebration here in April.

Come back to see us here, and relive our old school song:

"To the banks of old Wisconsin  
When years are past and gone."

and

"We'll return and show our comrades  
We're loyal as of old.  
And cheer them on to vic'try  
"Neath the Purple and the Gold."  
We'll be seeing you.

Norman Knutzen

## Paste on a Postcard

SEND US YOUR NEWS

Name \_\_\_\_\_ Class of \_\_\_\_\_

Address \_\_\_\_\_

City \_\_\_\_\_ State \_\_\_\_\_ Zip Code \_\_\_\_\_

Join Your Alumni Association  
Now To  
Get All Four Publications  
Planned For The Year

## The Time Is Now!

PLEASE CLIP AND MAIL

Membership Coupon

WSU-STEVENSON POINT ALUMNI  
ASSOCIATION

Check type:

Family .....12.50

Regular .....\$10.00

Life .....100.00

Family Life .....125.00

(Life memberships can be paid in  
four annual payments)

Name \_\_\_\_\_

Address \_\_\_\_\_

City \_\_\_\_\_ State \_\_\_\_\_

Zip Code \_\_\_\_\_

Wife's Maiden Name, if a WSU-  
St. Pt. Alum. \_\_\_\_\_

Check enclosed ☐ Amount \$ \_\_\_\_\_



## Assistant Named In Placement

Dennis Tierney has been named  
Assistant to the Director of Place-  
ment.

He has B.S. and M.S. degrees  
from UW-Madison where he has  
studied for the Ph.D. also. He has  
been a counselor in Student Affairs  
and teacher of counseling at Madison.

Join Your Alumni Association  
Now To  
Get All Four Publications  
Planned For The Year

## Building (Cont.)

ing, will be two classrooms, a 60 by 40-foot soft floor room for wrestling classes and recreation programs for physically handicapped persons; a therapy room, and a multi-purpose dance room, 60 feet square for students participating in the Physical Education department's new dance program. A 50 by 175-foot balcony to the gym will have portable dividers for putting the area into use as possible classrooms. This balcony might also be used for athletic courts.

An elevator linking two floors will be used for transporting equipment and physically handicapped persons. Sixteen faculty offices and a conference room will be directly above the first floor foyer.

In-door handball courts will be constructed on the north side of the main addition.

The present gym will continue to be used for basketball games, Mr. Brodhagen noted. Sporting events will be staged in the new facilities after state funds are approved for bleachers.

The department chairman emphasized that the purpose of the new gym is for teaching stations. Three dividers will be installed to transform the vast floor space into three separate courts for instructing such classes as tennis, volleyball, and basketball.

Haferbecker said the building will be named later in the year.

In the preliminary planning stage is a second, five story classroom building. This will house the home economics department, the speech and hearing clinic, and other general classrooms and offices. It will have one 150 student lecture hall. The plans should be at the drawing board by the time you read this paper.

A third housing complex is being considered. This might include apartment type living quarters. There is a possibility that these buildings might be of the high rise type. The probable location is north of Maria Drive and west of Reserve Street.

Bids have been accepted and construction is underway for a new outdoor track and field facility for physical education south of Maria Drive at Reserve Street.

New tennis courts are to go in northeast of the Bessie May Allen Food Center.

An environmental science building for the Biology and Natural Resources departments, and an administration building are being proposed for the 1969-71 biennium.

## Sports Calendar (Cont.)

Wrestling		
Dec. 6-7	State Collegiate	Superior
Dec. 18	Oshkosh	Home
Jan. 25	Triple Dual	Winona
	Winona-Stout-???	
Jan. 31	St. Norbert	Home
Feb. 1	Eau Claire	Home
Feb. 5	UW-Milwaukee	Home
Feb. 7	Whitewater	Home
Feb. 8	Stout	Menomonie
Feb. 11	Marquette	Home
Feb. 15	Triple Dual	Northfield,
	River Falls-Eau	Minn.
	Claire-Carleton	
Feb. 19	Platteville	Platteville
Feb. 22	Mich. Tech.	Houghton
Feb. 28-	Conf. Tourn-	Platteville
Mar. 1	ament	
Mar. 6,	N.A.I.A.	Omaha, Neb.
7, 8	Tournament	

Wisconsin State University  
Stevens Point, Wisconsin



William C. Guelcher

## Honored Alum Gets Still Another Award

William C. Guelcher, '59, has received a two-year grant to study for the Ph.D. in educational psychology at the University of Chicago. Guelcher was cited last year as one of the nation's five outstanding high school teachers and given a \$1,000 award by Yale University. At that time he was teaching at Evanston Township high school in Illinois. He has a master's degree from the University of Pittsburgh.

At the time of his nomination for the Yale award, Guelcher wrote officials there: "Stevens Point College was small enough then that one could 'pick the brains of the professors over coffee,' and I did. Many of my professors were such complete men, real humanists. . . . They probed far beyond the bounds of conventional discipline. The teacher who influenced me the most was Dr. Frederick Krempel, my professor in medieval history. Dr. Krempel gave me the image of what a teacher should be. In his interest and enthusiasm for history and his interest for things of our time, he channeled my interest into history and teaching."

Dr. Krempel is now Dean of Learning Resources.

## One of 35

Mary Braatz Gardner, '59, was one of 35 women in the United States to be awarded a Danforth Foundation Graduate Fellowship for this year. She is attending City University of New York to earn a Ph.D. in English. She has taught at Wayne State University, Hunter College, and Montgomery Junior College.

Her husband, Dr. Russell Gardner studied at WSU from 1955-1958. He has been accepted as a candidate by the New York Psycho-analytic Institute and will be a clinical fellow in psychiatry at Montefiore hospital in the Bronx.

UNIVERSITY ALUMNI NEWS  
Frederic "Rick" Frederick, Director of  
Alumni Relations  
Ellen Specht, Editor  
John Anderson, Associate Editor  
Alumni Office: Nelson Hall  
Telephone: 341-1251, Ext. 256

Non-Profit Org.  
U. S. POSTAGE  
PAID  
Permit No. 19  
Stevens Point,  
Wisconsin