

University

ALUMNI NEWS

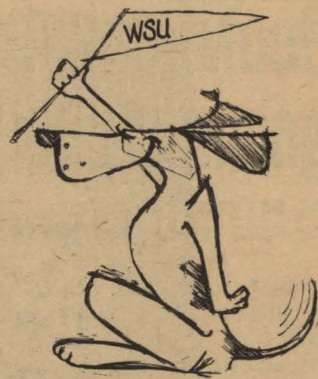
Wisconsin State University · Stevens Point

Volume 1 Number 2

June 1969

MR & MRS BURDETTE EAGON
1741 MAIN ST
STEVENS POINT WI 54481

Non-Profit Org.
U. S. POSTAGE
PAID
Permit No. 19
Stevens Point,
Wisconsin



WSU Gives Its First Annual Alumni Awards

Our Next 25 As Pres. Dreyfus Predicts Them

President Lee Sherman Dreyfus took his University resolutely toward the future, after he paused with its Alumni in recognition of WSU's proud 75 year heritage upon the occasion of the May 3 Diamond Jubilee celebration on campus.

"Our Next 25" was the subject of his address at the evening banquet that concluded the all day event for Alumni and friends of the University.

He sees WSU as the educational and cultural leader for the people of Central Wisconsin with a student body which he hopes will level off somewhere near 9,500. For beyond that number he fears alienation can set in for students from faculty and administration.

Dr. Dreyfus values the tutorial relationship that did exist between faculty and students back in the days when enrollment here was numbered in the hundreds rather than the thousands. But this is a relationship which he believes can return when the proper use is made of electronic wonders already available, machines which can free teachers to work in much closer relationship with students than is now possible when a professor must lecture, as he did in his last class at UW-Madison, to more than 600 students.

The 9,500 figure is the one he considers as still viable for creating the kind of tutorial relationship he envisions for this campus.

Though intended chiefly to serve Central Wisconsin students, Dr. Dreyfus does not view this as a provincial campus, for he sees it with a number of satellite campuses at distant places where WSU students may take part of their work. This is one of his visions which is about to come to pass, for 40 WSU students will have a semester abroad, based in London and it appears now that other programs will develop soon on the Continent. He feels such opportunities necessary to educate for world citizenry.

We could go on about the campus as he sees it developing in the next 25, and many of his ideas are unique. We have already seen enough of his ideas started toward reality, that we feel sure that we will be reporting many more of them to you as they become action programs on this campus.

By 1994 Lee Sherman Dreyfus will be celebrating his 68th birthday. "With a little luck I might be around..." he said. If he is, the planning and dreaming that are going on now, should result in a proud summary of accomplishment at WSU's Centennial Celebration.



Award winners left to right, Mrs. Elmer DeBot, Paul V. Collins, Norman E. Knutzen, Mrs. Irvin MacElwee, Miss May Roach, C. Joseph Nuesse, Wm. C. Hansen.

Three Distinguished Achievement; Four Service to University

It was a great day. Alumni Director Rick Frederick estimates that 1000 people were on campus to help WSU celebrate its 75th anniversary on Saturday, May 3.

Special awards were presented to seven honored graduates, three for distinguished achievement and four for service to the University.

The service awards went to William C. Hansen, president emeritus; Elizabeth Collins Pfiffner DeBot, former dean of women; Norman E. Knutzen, professor emeritus and Miss May M. Roach, professor emeritus.

Distinguished achievement awards were made to Paul V. Collins, Winchester, Mass., a founder of Northeast Airlines; Mrs. Irvin Reed MacElwee, Swarthmore, Pa., Civic leader, and C. Joseph Nuesse, Executive vice-president and provost of Catholic University of America, Washington, D. C. Award winners were given engraved recognition plaques, presented by Rick Frederick. Mrs. MacElwee and Collins are the children of the late Prof. Joseph V. Collins who was a member of the first faculty in 1894.

President Dreyfus opened the celebration with a welcoming address following registration in the University Center. Ray Specht, campus planner, spoke on University expansion and the afternoon was occupied with department open houses, demonstrations and exhibits all over campus, with tours of the University's 25 buildings for those who were returning for the first time in years.

Luncheons were arranged by the Primary Council and the Men's Glee Club.

Former classmates had a chance to greet each other at class reunions in the late afternoon, at the Center, and again at a cocktail hour which preceded the banquet at the Holiday Inn.

Orland Radke, chairman of the 75th anniversary committee, was master of ceremonies for the program after the dinner. He introduced members of his committee, Rick Frederick, celebration coordinator, Donald Benz, Miss Mary Jo Buggs, William Cable, Mrs. DeBot, Mrs. Hazel Bleck Gotham, Mr. Hansen, Warren Lensmire, Paul Schilling, student member; James Stoltenberg and Sherman Sword.

The president previewed the 75th history publication written by Mrs. Ellen Specht and gave the major address of the event. Entertainment was by the University Swing Choir directed by Prof. Kenyard Smith.

University Gets Department of Communications



Dr. Albert J. Croft

The establishment of a communications department has been announced by Dean William Hanford. The new department will be in two divisions, speech and mass communications. The department will include studies of speech, journalism, radio, television and film. It is expected to become one of WSU's most important offerings.

Dr. Albert Croft who previously headed the Speech department will be chairman.

The Stevens Point communication program will be the most extensive in the state in the disciplines it covers.

(Continued on page 2, Col. 4)

Alumni Assoc. All Systems Go

Membership in the WSU Alumni Association heads toward the 1000 mark almost quadrupling this year. In addition, thousands of names have been added to the mailing list as the Alumni office receives names of long lost Alums.

It's been a busy year for Alumni Director Rick Frederick as he tallies up at the end of his initial year as WSU's first full time director.

One of the most visible accomplishments was establishment of active Alumni clubs at Merrill, Antigo, Rhinelander, Wausau, Stevens Point and Milwaukee. Norman E. Knutzen assisted Frederick in the contacts with these groups.

Banquet meetings have been held at all of the above places, with President Lee Sherman Dreyfus and others from WSU travelling to each city to meet with the Alums. The President gave an address at each chapter meeting, telling Alums the accomplishments and plans for the University.

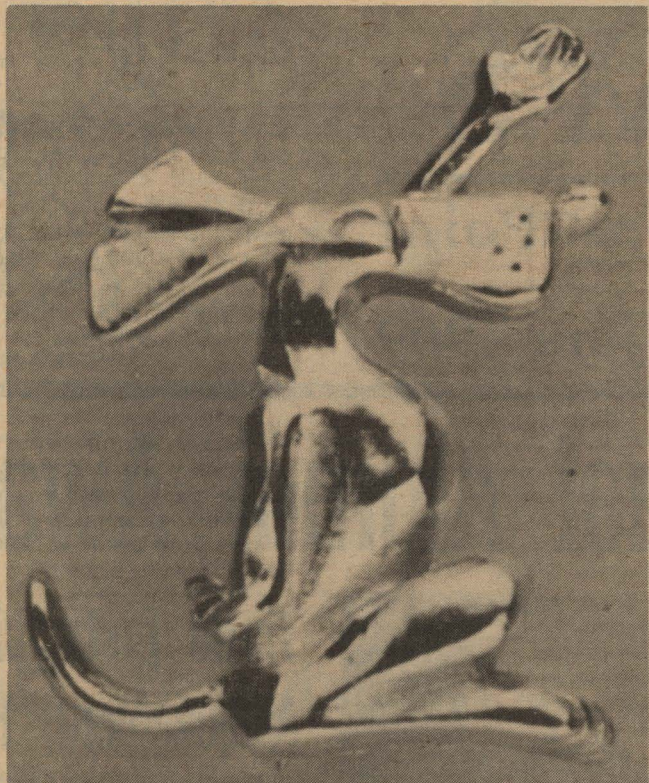
Other groups have asked to have clubs formed in their locations. These include Madison, Green Bay, Medford, Chicago, Minneapolis and Marinette. Frederick will be happy to assist any other group that contacts him.

Stevens Point's own area Alumni club has chosen Robert Worth as its president. Richard Toser is vice president; Dave Eckholm, treasurer and Mrs. Joyce Pinkerton Johnson, secretary.

(Continued on page 7, Col. 1)

Plan Now to Come for Homecoming

Stevie the Pointer —



"Stevie the Pointer," longtime mascot of WSU has been getting a lot of attention this year. In fact he got his picture in many newspapers after he was re-created in the form of a lapel pin for members of the Alumni Association.

"Our Alumni group is the only one in the country which has a membership pin, and we have been having a lot of fun this year with Stevie," said Rick Frederick, Alumni Director.

"Stevie represents fun and excitement and our Alumni Association should be that as well as a center for information programs and academic challenges," said Frederick.

Alumni activities have been given new impetus at the University and the little pin, now appearing on lapels all around the country, will help our alums spot each other wherever they go. The Alumni membership decal is showing up on cars also.

The University Institutes A "Semester Abroad" Program

WSU students at Stevens Point can now take a semester of their study in England. The first "Semester Abroad" program starts in August for about 40 lucky Pointers who are in the initial group. This program is first of its kind in the state university system.

Students will live at the International Friendship League's Peace Haven, an Edwardian villa at Acton, seven miles from the center of London.

They will live and study with several WSU faculty members, with visiting faculty from England. They will have contacts with several British universities. The U. of London has offered its library and union for the students' use.

Dr. Pauline Isaacson, Professor of Speech, has planned the program, working with a campus committee which includes Dr. Alan Lehman, Dean Burdette Eagon, Miss Helen Godfrey, Dr. Gerald Johnson and Dr. Elwin Sigmund. The program has had President Lee Sherman Dreyfus's enthusiastic support and he has helped get it over the hurdles at state level.

Pres. Dreyfus describes the program as a "way of helping our students become citizens of the world."

Dr. Lehman will accompany the students as teacher-administrator. Dr. David Coker, Director of Counseling and Mrs. John C. Thomson will be the other WSU faculty members. Mrs. Coker and the Coker's young son, Steven, will be with the group, Mrs. Coker serving as assistant counselor to Mrs. Thomson, wife of the former Regent, who is the general counselor.

Among courses to be taught first semester will be Shakespeare, Masters

of Literature in English, Geography of Europe, Principles of Education, History and Appreciation of Art and Social Psychology. Each semester's work will be planned to accommodate the needs of the students enrolled.

The first group will return to the States in time for Christmas. Another group will go for second semester and a third is planned for the summer session.

The summer session may appeal to Alumni who would like to earn credit in this fashion. The summer group will study in England and then divide into two groups for a tour of Europe. More information on this may be obtained by writing Dr. Pauline Isaacson, Semester Abroad Project Director.

Dr. Lehman has the B.S. degree from City College of New York, the M.A. and Ph.D. in English Literature from the U. of Iowa. The History Plays of Shakespeare are his major academic interest.

Dr. Coker has the B.S. degree from Western Illinois U., the M.A. from State U. of Iowa and the Ed.D. from Indiana U.

Mrs. Thomson took her undergraduate degree at Milwaukee Downer College, has lived in England and studied at the University of London.

Dr. Isaacson figures the average cost for a student at WSU is \$1200 a semester. Students may now have a semester abroad for very little more. It will cost each student \$1550 which includes the month's travel in Europe, an emergency fund of \$100 and an incidental fund of \$200. Any unused portion of the latter two items will be refunded. Dr. Isaacson arranged the details of the program and housing during a recent trip to England.

Go With Us To the Orient Or Acapulco

"Better sign up now, if you want to join the Alumni tour group on a wonderful vacation to the Orient next summer," says Alumni Director Rick Frederick.

The first vacation tour planned for the Alumni Association this summer's trip to Europe went over the top in applicants, and some disappointed Alums didn't sign up early enough.

This summer's tour group will visit England, Holland, Germany, Austria, Italy, Monaco, Switzerland and France.

Next summer, the World's Fair will be on in Tokyo, an added attraction for the Orient trip. Arrangements are not entirely firmed up on that trip yet, but if you are interested, let the Alumni office know and you will receive the information as soon as it is ready.

Acapulco will be the destination for a week's vacation trip next winter. Why not plan now to get away right after Christmas and come back refreshed after a jaunt to this luxury spot in Mexico. That trip is planned to leave on Dec. 26th and return Jan. 1. The cost will be \$335, not including meals. A \$50 deposit now will assure you of a place on the roster.

The Alumni Association is pleased to be able to arrange these all expense vacation trips at specially low rates for its members, and will continue to do so because of the interest shown in them. These are a membership bonus which can pay dividends over the years if you like to travel frequently.

WSU Get \$122,075 For Indian Youths

Stevens Point State University has received a \$122,075 federal grant to operate "Project Upward Bound" for about 90 Indian youths in the northern half of Badgerland.

Robert Powless, director of Programs for Recognizing the Individual through Education (PRIDE), said money is forthcoming from the Office of Economic Opportunity's Title II division.

Most of the funds will be spent this summer when the youths are brought to campus for six weeks of study and involvement in cultural events. Selection of participants is primarily based on the students' interest in furthering their education beyond high school.

After the students return home to complete their high school graduation requirements, WSU will continue to serve them by operating study centers in their communities and keeping tabs on their academic achievements.

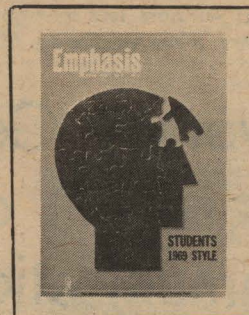
Matching funds are required for many government supported projects of this kind, so WSU will make its contribution by providing free use of its dormitories and other facilities during the summer.

Powless announced that 15 professional educators from the Stevens Point campus and high schools which have large Indian populations will serve on his staff with 10 tutors.

The bulk of students will be high school sophomores and juniors from the Shawano, Black River Falls, Ashland, Lac du Flambeau, and Hayward.

Most new participants will be from Menomonie County and enrollees in an "Upward Bound" program conducted last summer at Whitewater.

The 26 high school seniors will be here for eight weeks orientation for attending trade schools or universities.



This was the cover design for Vol. I, No. 1 of the new Alumni Association magazine, *Emphasis*, which goes to all who join the Association. We hope to make this a quarterly publication, a medium through which Association members can learn a great deal more about their University than is possible in a newspaper format. The *University Alumni News* gives news coverage of University and Association activities and goes to all Alumni. If you know an Alum who is not getting it, please let us know.

Communications (CONT.)

It has had the encouragement of President Lee Sherman Dreyfus and is, in fact, an outgrowth of his own academic interests, for he is a widely known mass communications scholar. Dr. Hanford, Dr. John Ellery presidential assistant, and Dr. Croft are among those on the present staff with extensive backgrounds in the related fields that have now been combined.

Dr. Croft came to WSU in 1967 after four years as executive vice president of Resources Development Corp. in East Lansing, Mich. He had previously been Chief, Division of Communications for the foreign aid program in South Vietnam with the U. S. Agency for International Development (AID).



Many students at WSU have taken part in the tutoring program for Indian youngsters in Wood and Menomonie Counties, as a continuing project of assistance for the underprivileged.

Plan Now to Come for Homecoming

Six Story Bldg.

"Heart of Campus"

Going Up at WSU

A new heart is in store for Wisconsin State University at Stevens Point on its 76th birthday next year.

This vital organ will be a \$3.5 million six-story learning resources center (library) which President Lee S. Dreyfus describes as the new life beat for the campus. Academic activity at schools rotate around such facilities, he explained.

The University hopes for a 1970 completion date—for the building which will be Stevens Point's tallest. It will be named in honor of the late Dr. James H. Albertson, former university president.

Dr. Frederick A. Krempel, Dean of Learning Resources, who will administer the center, said plans for the building were begun several years ago. "However, desire to have it adequately house facilities for learning resources and the search for adequate monies to finance the building and equipment delayed actual construction by almost two years."

Consequently, the center which was originally planned for a student enrollment of 7,000, is expected to serve almost 7,500 students when it opens.

Some facilities of the building will be in maximum utilization immediately upon occupation. "Certain pressures upon space utilization can be met by the application of new techniques of librarianship. The use of microfilm can greatly reduce the amount of space needed for storage of bulkier materials, such as newspapers, periodicals, and government documents," Dr. Krempel reported.

Need for study space for the student body within the building can be reduced, he said by work of the instructional media services under direction of Robert Lewis. That division of the center is planning a system of campus-wide dial access retrieval which eventually will be capable of video as well as audio distribution and will allow the student to retrieve information not only at locations within the building but at other campus locations.

"Plans for developing a campus-wide closed channel TV distribution system will further increase ease of access to learning materials beyond the immediate facilities of one building," he advised.

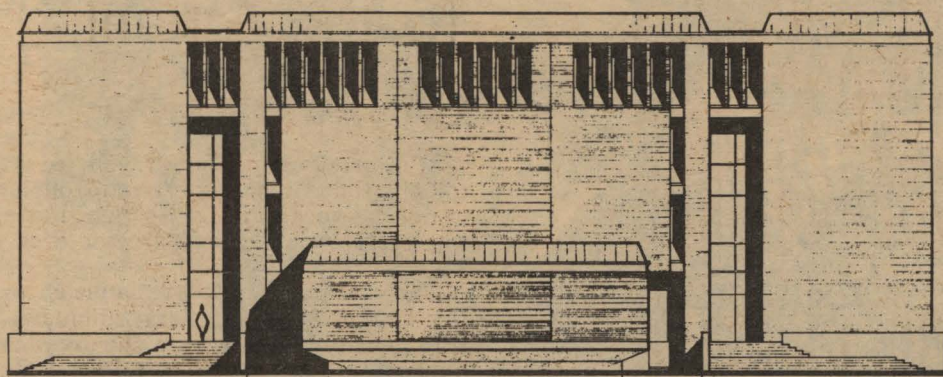
Video tapes which make it possible for students to see such men as Winston Churchill, General Eisenhower, Joseph Stalin and others as they actually appeared before the public will be among the instructional aids available in the new building.

Because of these new innovations of education, teachers don't have to worry about being pushed aside, Dr. Krempel emphasized. Being relieved of discussing dates and events in history classes will allow teachers to interpret historical facts and thus create new vistas in education.

Dr. Krempel estimates the present staff of 14 professional and 12 classified persons within the library facilities will be increased to 20 professionals and 22 classified within the next five years. Similar staff adjustment will be required to handle the rapidly expanding services of the instructional media area.

"Automation of many processes of library operation, such as acquisitions and circulation, should not only facilitate the more routine functions but free the professional staff to concentrate on policy planning and improvement of resource services to the student and faculty," he said.

Second Classroom Building —



This is an architectural sketch of the new building which will go up east of the present Classroom Center facing Fourth Avenue.



Dr. John Chen
Dir. of Libraries

A distinguished international scholar and library specialist has been appointed director of libraries at Wisconsin State University - Stevens Point, effective July 1.

He is Dr. John Chen, a native of China who currently directs library operations at Lynchburg College in Virginia.

He holds five academic degrees, is rated as one of the leading specialists in southeastern states on library automation, is the author of 25 books, numerous articles and the winner of a \$10,000 Literature Award for Scholars.

In announcing the appointment, Dr. Frederick Krempel, dean of the learning resources center which includes library, audio-visual operations, and archives, said Dr. Chen's

(Continued on page 4, Col. 3)

Speech Pathology and Audiology; Home Econ. to Get New Home

A federal grant of \$638,990 to cover about one fourth of its cost has been approved for a new classroom building at WSU. The building will go up to the east of the present Classroom Center and will be similar in architecture but more square than rectangular in shape. It will be a five floor building. Cost will be \$2.6 million.

The lower floor will house the Department of Speech Pathology and Audiology, a rapidly expanding department which has become an important center in Central Wisconsin for treating disabilities within the areas of its expertise.

Facilities for this department will include excellent audiology, visual perception and human anatomy laboratories, language therapy and diagnostic rooms, organic and group therapy rooms as well as individual therapy rooms. There will be conference rooms, faculty offices, graduate student space and TV observation rooms which can plug into the therapy rooms. There will be a client parking area planned also for this department.

The next three floors will house the Home Economics department. Alums whose study facilities were confined to the East Wing of Old Main will be impressed with the plans for this growing department.

Fun Plans Afoot For Homecoming

Big plans are underway to make next fall's Homecoming even more successful than last year's.

Set aside the weekend of October 17-18-19 if you possibly can and come back to campus to meet old friends and have a good time at all the events that are being scheduled for the Alumni.

Friday evening will start off with a cocktail party, a banquet and a dance.

If you can come just for Saturday's events, be sure to register at the Alumni center which will be set up that day at the University Center. That way you'll be sure of contacting other friends.

After the traditional Homecoming parade on Saturday morning there will be a Dutch Treat Brunch back at the University Center. Men's Glee club Alumni are planning a special luncheon and they will also perform at halftime during the football game.

The "S" Club will hold its annual Alumni banquet Saturday evening as will the sororities and fraternities and the Homecoming dance will be held that evening as usual.

A new event has been added for Sunday, the 19th. A golf tournament for men and women alums will be staged starting at nine in the morning at the Stevens Point Country Club, and there are tentative plans for a style show, so non-golfing wives will have something interesting to do while their husbands play.

A luncheon Sunday noon will close the Homecoming reunion festivities. See you there?

U. Center Plans \$3 Million Addition

The University Center will get a \$3 million addition to more than double the size of the present Center at WSU.

Richard McKaig of the Center staff is chairman of the planning committee which is working with Center Director Ron Hachet.

Robert Worth, '52, represents the Alumni on the committee. Other alums serving are Oliver (Bud) Steiner, '65, and Dr. Donald Benz, '53. Steiner is on the Center staff and Dr. Benz is a professor of education. Faculty, students and staff also have representatives.

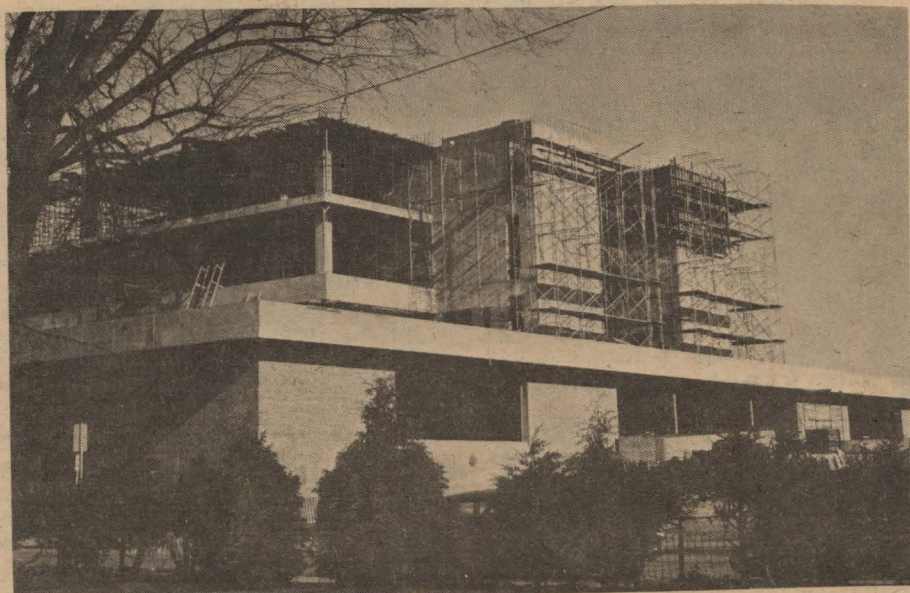
The addition will be 100,000 square feet. The State Building Commission has recommended that construction be done during the 1969-71 biennium.

The project will not involve tax money. Centers and residence halls are self-sustaining. Services included in the centers such as cafeterias, bookstores, snack bars and recreation facilities are paid for by students. Part of the profits pay for building costs and upkeep.

Many alums will remember the first student union, the predecessor of the University Center. It was established about 15 years ago in the basement of Delzell hall, then a men's residence hall. It included a lounge, a games room and a very limited refreshment bar.

Ten years ago the University Center was constructed, but it too was overcrowded before long, and it was doubled in size in 1965.

Hachet has been on the staff of the center since 1962, coming from Ball State in Muncie, Ind.



The Learning Resources Center (Library) is being built on Reserve St. between Franklin and Portage Sts.



This picture was taken at the banquet which followed the day long celebration of WSU's 75th anniversary on May 3rd.

Miss Syble Mason Retires as Associate Professor, Librarian

by John Anderson

Miss Syble Mason never got too far in life (distancewise) after enrolling at Wisconsin State University-Stevens Point in 1924. But her status at the school zoomed from student to associate professor in the 45-year interim.

She will retire June 1 from a library staff which grew from three to 26 persons during her 39 years as an employee.

Miss Mason is the second senior member of the faculty (Miss Mildred Davis has the longest tenure with 41 years in the foreign language department), and she leaves the campus after making several records. And what she didn't make herself, she meticulously recorded for posterity in the form of archive scrapbooks.

She and about 15 other persons were members of the first class to receive baccalaureate degrees from Stevens Point State. That was in the spring of 1928 — the second time she had graduated from the institution. She had completed a three-year high school teacher training course the year before, but decided to re-enter because the opportunity of receiving her degree couldn't have been more convenient.

In terms of service, she and her father, Raymond, a fireman in the heating plant 24 years, logged a total of 63 years at WSU.

Miss Mason was born in Westfield and reared in Oxford. After she had completed high school her father quit his job as manager of a mill and electric plant and moved the family to Stevens Point so it would be economically possible to send her and her brother to the state teachers college.

John Sims headed the school then; subsequently she was associated either as a student or faculty member with eight of the nine presidents.

Miss Mason's interest in library work jelled when she took a teacher library course and then worked as a student assistant in the WSU library two summers and one full school term. But her first full time job was a sharp contrast to the orderly keeping of books.

Her only period away from the campus was between 1928 and 1930

when she was one of two persons who comprised the faculty of the now defunct Coloma High School. She taught biology, civics, physical education, English, and history. Her undergraduate major had been English and her minors were Latin and history, so the biology course in particular was a "real challenge." "I learned with the students — we only had one microscope and I had had training only in botany," she recalled.

In 1930 she was hired for a summer job in the WSU library and was offered a temporary position for the first semester in the library. She says she gambled by giving up her teaching job with hopes of staying here permanently — and won. Then age 23, she was the youngest faculty member.

Miss Mason took leaves in 1935 and in 1942 to do graduate work at the University of Wisconsin and University of Illinois — Champaign-Urbana, respectively.

Cataloging and classifying have been her specialties, but her experiences have covered every phase of library work including teaching some college courses and manning the reference desk, circulation and textbook library and doing acquisitioning.

In 1952 she assisted in planning the library which is to be vacated next spring for an elaborate structure now under construction on Reserve Street. "We never dreamed there would ever be a need for another library — we just didn't expect the school to grow so fast."

Since then, the library has become known as a learning resources center with emphasis on audio-visual (instruction media) services.

While librarians universally have reputations for being "hooked on books" even on their off hours, Miss Mason likewise likes to read but has had some other time consuming interests, too.

She has been president, district officer and state committee member of the Business and Professional Women. On campus she was an advisor for Omega Mu Chi social sorority, faculty secretary, member of the Association of Wisconsin State Universities Faculties and chairman of the alumni and student activities committees.



Syble E. Mason

She takes particular pride in two of her special projects, the "President's Books" compiled from clippings appearing in newspapers about the presidents of WSU and alumni records on all graduates of the school during a quarter century.

Miss Mason, who is 62 and eligible for eight more years on the faculty said "the time is right for me to retire." She won't have an opportunity to serve in the new six-story learning resources center (library), but "I won't miss visiting it."

Dr. Chen

(Continued from page 3)

knowledge of library automation and computerization of library services will make it possible to keep the facility more up to date.

Dr. Chen received his B.S. and Ph.D. in library science and library education from Kansu University in China.

He was senior supervisor of higher education and libraries at the International Cooperation Administration and has served as professor of education, dean of summer school and director of library in various universities in China.

He earned an M.S., M.A., and M.S.L.S., from Virginia Polytechnic Institute, New York University, and Columbia University.

He received a doctorate in educational administration with twelve academic honors at Pennsylvania State University.

Previously, Dr. Chen served as director of the library, professor of education and foreign student advisor at West Virginia Institute of Technology, and director of the Instructional Materials Center at the State University of New York.

Bargain Buy For Culture And Football

Alumni Association members who live in Central Wisconsin now get another bonus with their membership. Rick Frederick, Alumni Director, has worked out a package deal for the 1969-70 Arts and Lecture Series on campus. Jack Cohan is Director for the series.

The Concert Series at the University Fieldhouse, the Chamber Series in the University Auditorium and the Lecture Series in the Auditorium can be attended for a savings of \$7.50 over the regular \$27.50 price. Association Members may attend all of these for \$20.00. Or any two of the three series can be attended for \$15, a savings of \$2.50.

Football enthusiasts may attend six home games for \$10.00, a savings of \$5.00 if they are members of the Alumni Association, according to an arrangement completed with the Athletic department.

When you send for your tickets, order direct from the Arts and Lectures office or the Athletic department. But indicate that you are a member of the Alumni Association to get the special rates.

The Concert Series will include Doc Evans and his Dixieland Band, the Stockholm University Chorus, Osipov Balalaika Orchestra of Moscow with stars of the Bolshoi Opera and Russian dancers, the Detroit Symphony Orchestra and Alicia De Larrocha, pianist.

The Chamber Series will present Menahem Pressler, pianist, Alvin Ailey American Dance Theater, Chung Trio, Canadian Opera Company, Veronica Tyler, soprano and Albert Fuller, harpsichord.

The Lecture Series will have Julian Bond, Bill Sands, Ralph Nader, Dr. Ashley Montagu, Roger Mudd and Mark Van Doren.

The Pointer, Student Paper, To Go Independent

Alums will be interested in the decision of the Pointer, campus newspaper, to go independent next year.

The Pointer plans now to cut its official ties with the University and publish as a "free enterprise" operation beginning in Sept.

Gene Kemmeter, Shawano senior and editor-in-chief, said the move followed a cut in the Pointer's salary allotment by the Finance Committee of the Student Senate.

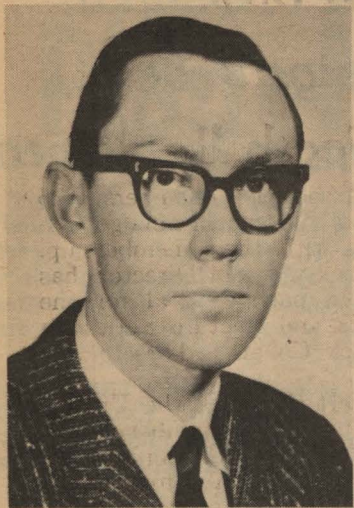
Kemmeter has said that the decision had nothing to do with censorship, that the Pointer had been completely free to print whatever its editors felt would be appropriate.

The newspaper staff wanted to begin independent operation with the last few issues this spring, but were unable to overcome production facility difficulties and time requirements with the personnel available.

Paul Schilling, Student Senate president, worked out an agreement with the Pointer staff to complete what he felt was an implied contract with the student body to provide a weekly paper through this school year. The Student Senate will then aid the Pointer's efforts to go independent for 1969-70.

This will be done in such a way that if the independent paper does not make it, there will be money in the student funds to insure the re-establishment of a campus paper.

The Pointer editors feel that advertising revenue has reached a level that can pay for printing costs and that subscriptions and a 10 cent single issue charge will pay for supplies and circulation.



Dr. Thomas E. McCaig

Dr. Thomas McCaig, associate professor of Education, has been awarded a \$500 Excellence in Teaching Award given by the Johnson Foundation of Racine to recognize distinguished teachers at each of the nine state universities.

President Lee Sherman Dreyfus made the presentation to Dr. McCaig at the April faculty meeting.

Dr. McCaig, a native of Chicago, has been on the WSU faculty since 1966. He has spearheaded some innovative methods of instruction for his students, most of whom are future teachers.

He uses television so his students can evaluate their own performance in classroom situations.

He has been director of a student teaching program at Wausau, a program intended to create closer ties amongst the school district, student teachers and the University, so practice teaching experiences can be made as meaningful and effective as possible, he says.

Dr. McCaig earned his three degrees at Loyola U., Chicago, and has been an educator for 15 years.

Other finalists considered for the award were Mark Cates, Political Science; Dr. Frank Crow, History; Dr. Jimmie L. Franklin, History; and Robert Searles, Biology. They were chosen from nominees submitted by each department faculty and by a special student senate committee.

Making the selections were former recipients of the award, all nominees, the deans, vice president for academic affairs, President Dreyfus and 12 students.

Wisconsin State University at Stevens Point Foundation, Inc.—Bulwark for the Future

80 Acre Lake Property Purchased By Foundation

Eighty acres of undeveloped land adjacent to Severson Lake in northeastern Portage County has been purchased by the WSU Foundation.

The following have been asked to serve on a committee to recommend use for the land and programs: Dr. George Becker, Biology; Dr. James A. Bowles, Natural Resources; Dr. Burdette W. Eagon; Dean of Education; Dr. William B. Hanford, Dean of Fine Arts; University Center Director, Ron Hachet and Campus Planner, Ray Specht.

Wm. B. Vickerstaff, the Foundation's Executive Secretary said no detailed plans have been made regarding the use of the property, but he suggested many university departments will probably develop outdoor education programs there.

For example, it might be used as a retreat for artists and writers, a laboratory for conservation and science students, and a popular meeting site because of the tranquil surroundings, he said.

Vickerstaff said the purchase was one of the major items of business ever undertaken by the Foundation.

Severson is in the Town of New Hope, about 15 miles east of the campus, between Iola and Nelsonville. Half of the shoreline of the 30-acre lake is owned by the Foundation. The public access is on the other side and will not be affected by the transaction.

Conservation specialists have described the lake as about 70 feet at its deepest spot, filled with large mouth bass, northern pike, and panfish.

The adjacent land has an elevation variation of 200 feet and is mostly wooded with pine, oak, and red maple.

Vickerstaff believes much of the acreage will be left undeveloped, but explained that discussions will begin soon by the board about the kind of shelter facilities that will be constructed.

OEO Health Survey

The Foundation this year has also contracted to do a Health Survey for the Office of Economic Opportunity. The survey covers a five county area including Portage, Wood, Marathon, Taylor and Clark Counties. "The purpose of the survey is to study the health care available, particularly to those of low income," said Wm. B. Vickerstaff, executive secretary. The data will be part of a national study being conducted in about 40 areas around the country. Most of these areas are of the central core type. WSU is one of the few surveying an area of another type, a survey which will be a projection of rural health needs. The survey will determine the availability of health facilities and how they are used, and will attempt to establish the current patterns and habits of health care.

"This information is to be used by the medical profession, health care agencies and health facilities, such as hospitals to help develop future services to meet the area needs," said Vickerstaff.

The statistics collected are now being analysed by the National Opinion Research Corporation at the University of Chicago and results are expected to be available soon.

"From these we might, for instance, see if transportation is a problem, or whether new and varied kinds of insurance programs should be developed," Vickerstaff said.

It is expected that this information can be put to immediate use within the local area as well as contributing information to the total national study.

All Officers Re-elected for Coming Year

Hiram D. Anderson, Jr., a Stevens Point attorney was re-elected president of the WSU Foundation.

Dr. John Steiner, Waupaca physician, was re-elected vice president.

William B. Vickerstaff was named executive secretary. He is also Special Assistant to President Lee Sherman Dreyfus.

Again Leon Bell was chosen secretary and treasurer. Col. Bell is Vice President of Business Affairs at WSU.

Foundations such as the University's exist to provide assistance that the state is unable to give, said Vickerstaff in announcing the officers.

The Foundation operates independently of the University because of its private financial backing. Decisions of its operations are made by the board of directors which includes the officers plus Mrs. Elizabeth Pfiffner DeBot, Mrs. Mary Williams, Frank Crow, Carl N. Jacobs, Joseph Hartz, Samuel Kingston, Robert Livingston, Lee Sherman Dreyfus, all of Stevens Point; Marshall Taylor, Wausau; Norman Knutzen, Tigerton; Dr. Russell Lewis, Marshfield; Mrs. Dorothy Alexander, Port Edwards; and student representative Paul Schilling, Crandon.

Glennon (CONT.)

be her profession.

Miss Glennon attended the Stevens Point Normal School two summers and two regular school terms to receive a three-year diploma which qualified her to teach on the high school level. Later she received her B.A. and master's degrees from the University of Wisconsin in Madison. She was on the faculty at Waupaca, Waukesha and Stevens Point P. J. Jacobs High School before joining the Central State Teachers College faculty in 1940. She recalls her high school teaching with much pleasure.

A charter member of the Wisconsin Council of Teachers of English, she also is a member of the National

Miss Bertha Glennon Retires This June; Thinks Today's Students Are Better Prepared

by John Anderson

All that talk you hear about today's young people being poorer English students than their parents isn't true, according to a professor who is retiring this month after 29 years at Wisconsin State University-Stevens Point.

Miss Bertha Glennon says, "Students are better prepared each year because high school English teachers are doing excellent jobs. Maybe the freshmen haven't reached the ideal in spelling, but they are improving."

She isn't even complaining about their grammar.

"I've noticed, too, that young people are a little more sophisticated nowadays, but they still are friendly and interested and cooperative to work with—I only hope that doesn't change," she said. Those are her observations after serving about 6,000 collegians during her tenure in the WSU English faculty.

Miss Glennon, whose office always has been in Old Main, hasn't always been just an English teacher.

She taught a full load (twelve credits per week) plus serving as adviser for "The Pointer" and "The Iris," student newspaper and yearbook, respectively. She also was adviser for Omega Mu Chi, local social

sorority for 9 years, was director of school publicity for the local news media, and was faculty secretary-treasurer when Miss Bessie May Allen was chairman.

She handled most of those jobs simultaneously, with the aid of midnight oil. On Monday nights she had sessions with the newspaper editorial staff in preparing copy for the newspaper. On Tuesday nights she was back to help her students read the galley proofs and to attend the sorority meetings. Sometimes on weekends she wrote the publicity, including a weekly column which appeared in the Stevens Point Daily Journal.

One of her favorite keepsakes is a miniature bulletin board posted with pictures of all "Pointer" editors who served during her 14 years as adviser.

She takes special pride in all of the editors including Frank DeGuire, now a law professor at Marquette University; composition editor David Behrendt, now education writer for the Milwaukee Journal; Jerry Madison, now home secretary for Congressman David Obey; and Earl Grow, communications professor at the University of Wisconsin-Milwaukee.

A "Pointer" photographer who made the big time and has received numerous awards for his pictures in

the Milwaukee Journal is George (Sam) Koshollek.

In the classroom, a survey of English literature has been her favorite course; Milton and Keats her favorite writers.

Miss Glennon's teaching duties were enlivened in 1943-44 by the presence on campus of World War II flight training groups. The men were being groomed as officers and were assigned to her class "to develop their English so they could communicate more effectively with their men," she recalls.

The cadets always marched into the classroom at the direction of their sergeant, and one day each came with a brightly polished apple, marched in front of her with straight faces and placed the fruit on her desk. She responded: "This is a lot of apple sauce" and the spell was broken with an uproar of laughter.

Miss Glennon is a native of Stevens Point and member of an Irish family which came to the city more than a century ago. Her father, John, was editor of the Daily Journal for many years so it was natural she had an interest in writing. While a high school student, she enjoyed doing themes and reading literature and decided that teaching English should



Miss Bertha Glennon

Council of Teachers of English, plus the Wisconsin Education Association and Association of Wisconsin State University Faculties.

In regard to her coming retirement she says, "It's amusing to me that for the past five years people have come up to me and said, 'Are you still teaching!' with emphasis on the 'still.' Now they're saying 'oh, you're retiring—what are you going to do with your time?'"

She'll make that decision when the time comes on June 1.

Two Well Loved Home Ec. Teachers Died This Year



Miss Bessie May Allen

Miss Bessie May Allen, 86, long time head of the Home Economics department died on Feb. 4.

Miss Allen retired in 1952, having headed the department for 39 years. She came to Stevens Point in 1913.

Under Miss Allen Home Economics became one of the outstanding departments on campus. She was the person who had the longest association with it.

In 1915 the John F. Sims Home Management Cottage was opened and Miss Allen lived there, supervising the girls who took turns living there for periods of practical experience. Miss Allen planned the double apartment building thought to be the first Home Management house on any campus in the nation. The idea originated by Miss Allen was widely adopted.

Miss Allen broke a strong tradition that no woman could be leader of the faculty organization when she was elected faculty chairman in 1943 and re-elected in 1944.

At one time she had three married couples living in the house while the wives earned Home Economics course credit. The husbands assisted in the homemaking. Again, this was considered a unique experiment and was a project which received state and national recognition at a time when the married student was a rarity on college campuses.

Miss Allen followed the careers of "her girls" with great interest, keeping a remarkably complete mailing list through the years and she was proud of their accomplishments in the profession.

Bessie May Allen's name has been linked with this school for many years, and she witnessed the construction of every building on campus except for the central portion of Old Main. One of the newer ones has been named in her honor, the Bessie May Allen Residence Center, which appropriately is a Food Service center for the residence hall complex on the north campus.

Miss Allen contributed a great deal to the growth of Home Economics in Wisconsin and in the entire country through her work with professional Home Economics organizations. She was widely respected in the field. She studied at Iowa State Teachers College, took her B.A. and M.A. degrees at Columbia University and had additional study at the University of Chicago and the University of Hawaii.

Many of her friends and colleagues have made contributions to the Bessie May Allen Scholarship Fund which she initiated anonymously prior to her retirement. Later the then President William C. Hansen persuaded her to allow her name to be used. An award is given in her name each year to an outstanding junior Home Economics major. By her own generous bequest of half her estate to the WSU at Stevens Point Foundation, Inc. she has assured the continuance of these scholarships.

Miss Allen is survived by numerous nieces, nephews and cousins.



Miss Carolyn Ann Sands

Miss Carolyn Ann Sands, 31, Assistant Professor of Home Economics and assistant to the Campus Planner died on Feb. 10. Miss Sands' unexpected death was a shock to the University community, though she had been hospitalized for the previous three weeks and had not been in good health for some time.

Miss Sands joined the faculty here in 1961. Her extensive academic background in related art was considered unusual in the state. Her qualifications and talents had led recently to her appointment to a position as Assistant to Campus Planner Ray Specht.

For several years previous she had served as an interior decorating consultant for WSU. In her planning position she was responsible for designing as well as interior decorating of rooms. She was considered an expert in lighting and the psychological use of color. Her influence still will be felt in the next residence hall complex to be built at WSU, for one of her final assignments completed was the program statement for that project.

Miss Sands had recently completed advanced studies in the area of Environmental design while on a Teacher Improvement leave from 1965-67. She had also collaborated in authoring a textbook on psychobiology of design and relationships of vision and body mechanics to form perception, scheduled for publication next year.

Miss Sands received a B.S. degree from Iowa State College in her hometown of Ames, her M.A. at U. of Minnesota and her M.S. at UW-Madison.

Survivors are her parents, Mr. and Mrs. Ted Sands of Ames; sisters, Barbara and Elizabeth and a brother, Norman.

The Carolyn Ann Sands Memorial Fund instituted at the time of her death is being administered by the WSU-Stevens Point, Foundation, Inc. and will be used in a manner fitting to the memory of Miss Sands to be determined by the University and Mr. and Mrs. Sands.

Alumni Assoc. Life Members

Mr. and Mrs. Harvin Abrahamson
Fox Point, Wisconsin
Mr. and Mrs. Len Abrahamson
Tigerton, Wisconsin
Mr. and Mrs. George Alfsen
Sturtevant, Wisconsin
Diana Anderson
Eagle River, Wisconsin
Royal Anderson
East Troy, Wisconsin
Kathryn Arndt
Stevens Point, Wisconsin
Allen Barrows
Bloomington, Indiana
Leon Bell
Stevens Point, Wisconsin
Mr. and Mrs. Richard Berndt
Stevens Point, Wisconsin
Mr. and Mrs. Arthur Broecker
Fond du Lac, Wisconsin
Elizabeth Butler
Merrill, Wisconsin
Man Ming Robert Cheung
Chicago, Illinois
David Coates
Princeton, Illinois
Ruth Corey
Wisconsin Rapids, Wisconsin
Mr. and Mrs. Mark Deadman
Stevens Point, Wisconsin
Mr. and Mrs. Elmer DeBot
Stevens Point, Wisconsin
Frank DeGuire
Wauwatosa, Wisconsin
Pres. and Mrs. Lee Sherman Dreyfus
Stevens Point, Wisconsin
Mr. and Mrs. John Egenhoefer
Fort Wayne, Indiana
Parr Eves
Watsonville, California
Mrs. Gilbert Faust
Stevens Point, Wisconsin
Mr. and Mrs. Frederic D. Frederick
Stevens Point, Wisconsin
Kathryn Friday
Stevens Point, Wisconsin
Mr. and Mrs. Thomas Goltz
Laramie, Wyoming
Richard Gunderson
Milwaukee, Wisconsin
Mr. and Mrs. Roy Habeck
Woodstock, Illinois
Dr. and Mrs. Gordon Haferbecker
Stevens Point, Wisconsin
Dr. and Mrs. William Hanford
Stevens Point, Wisconsin
Jane Hanousek
Schofield, Wisconsin
Ethel Hill
Stevens Point, Wisconsin
Mr. and Mrs. Burton Hotvedt
Wautoma, Wisconsin
Daniel G. Jiroves
Brokaw, Wisconsin
Robert Karsten
Oconomowoc, Wisconsin
Lulu Kellogg
Stevens Point, Wisconsin
Vivian Kellogg
Stevens Point, Wisconsin
Mr. and Mrs. Samuel Kingston
Stevens Point, Wisconsin
Robert Konopacky
Stevens Point, Wisconsin
Douglas Kopitzke
New London, Wisconsin
Virginia Kowalski
Menomonee Falls, Wisconsin
Carol Kreis
Merrill, Wisconsin
Mr. and Mrs. Charles LaFollette
Stevens Point, Wisconsin
Mr. and Mrs. Daniel Lavold
Waupaca, Wisconsin
Warren Lensmire
Stevens Point, Wisconsin
Marie Lukas
Wausau, Wisconsin
Edna McNown
Antigo, Wisconsin
Mary Ann (McNown) Schultz
Antigo, Wisconsin

(Continued on page 8, Col. 2)

Hale F. Quandt, George R. Berg Gyms to be Named

Two former athletic directors at Stevens Point State University, George R. Berg and his successor Hale F. Quandt, have been selected as namesakes for the two gymnasiums in the school's physical education building.

The school's faculty naming committee, headed by Vice President Gordon Haferbecker, made the recommendations to President Lee S. Dreyfus for final approval.

Quandt's name will be given to the 110 by 150-foot gym in the physical education building addition now nearing completion at a cost of \$1.5 million. The currently-used gym will bear Berg's name.

Quandt, who died June 30, 1968, at age 65 spent 40 years coaching, 21 years on the prep level before coming to Stevens Point as athletic director in 1948. He had taught at Cuba City, South Beloit, Ill., Wausau, Hartford, Benton Harbor, Mich., and Tomah.

He coached nearly every sport available at the high school level, including boxing, and few state coaches rivaled his record of success.

At the university, Quandt's basketball teams posted an over all record of 193 wins and 136 defeats, winning conference titles in 1957 and 1961 and the southern division in 1948. His football teams compiled a record of 13-12-4, including the conference championship in 1949. His baseball teams posted a 29-13 record and his 1953 golf team won the State College Conference title.

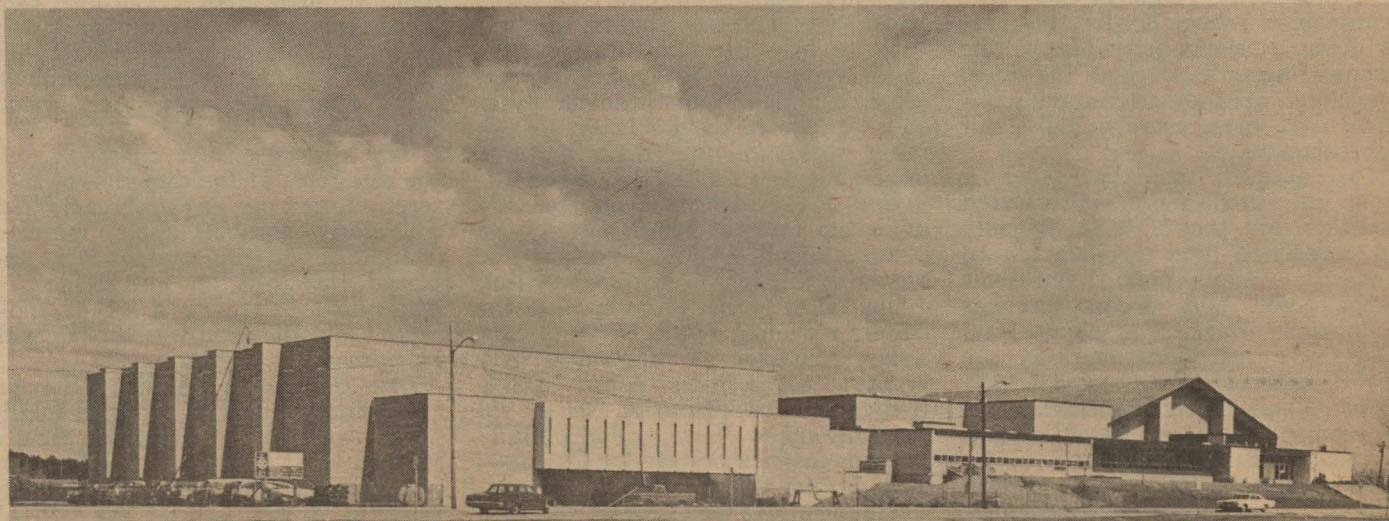
Quandt died on the day his retirement was effective from the university.

Berg, who died in October of 1950 at age 47, coached at Stevens Point when the school went through one of its gloomiest sports eras. Because World War II stripped the institution of nearly all its men, it was difficult for him to even have teams.

Things looked bright in the fall of 1944 when the basketball team rolled up four victories in five starts — even though the coach could only find nine men for the squad. But during Christmas vacation a Navy recruiter signed up seven of the men for active duty early in January.

The previous year had found the school without a team — and the coach providing physical education training for air corps trainees stationed on campus. Berg had more success in football at Stevens Point. During four seasons he led his teams to 10 wins, 13 losses and one tie. In 1946 his gridders won the southern division championship in Wisconsin.

Berg received his bachelor's and master's degrees from the University of Wisconsin and coached at Waupun High School from 1931-33 and at Green Bay East High from 1934-1942 when he came to Stevens Point.



This \$1.5 million addition to the physical education building and fieldhouse will be ready for use this coming fall. It doubles the size of the building. A huge new gymnasium will be named in honor of the late Hale Quandt, while the present gym will honor the late George R. Berg. Both men were former coaches and athletic directors at the university.

Alum Assoc. (CONT.)

The board of directors for the Point club includes the officers and Mrs. Mary Samter, Mrs. Norman Hahn, Mrs. Richard Toser, and Mr. and Mrs. Lennert Abrahamson.

The local group has plans to sponsor a golf tournament the Sunday of Homecoming, October 18, next fall. Jerry Stenz has been made committee chairman for that event. There will be special activities planned for women also.

The Pointer group is considering publication of a monthly newsletter for Alumni in central Wisconsin.

The Association hosted graduates and former students at a social hour during the Wisconsin Education Association convention at Milwaukee in October at the Ramada Inn.

Next year the new Milwaukee club will help host this annual affair. Leaders in organizing the Milwaukee club have been Mr. and Mrs. Harvin Abrahamson, Richard Spindler, Frank De Guire, Virginia Kowalski and Vince Brunnert.

The Wausau Country Club was the scene for the Wausau club banquet on Jan. 28, with Mr. and Mrs. Gary Williams spearheading that event. A cocktail hour preceded the dinner.

"Your University and You" was the title for President Lee Dreyfus's address. The swing choir and the stage band from WSU performed show tunes, folk and jazz music.

A coffee hour was hosted also by the Association at the Central Wisconsin Education convention at Wausau this year.

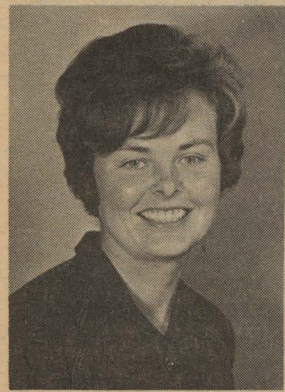
At Rhinelander, Cedric Vig is working with Mrs. Sadie Ferguson, Mr. and Mrs. Richard Marko, Mr. and Mrs. Myron Sharkey, Mr. and Mrs. Harold E. Berndt and Mr. and Mrs. Earl Schilling to make the Rhinelander club a success.

At Antigo Country Club a group of loyal Alums gathered on a stormy winter night to renew acquaintances and hear the latest news of their Alma Mater.

Miss Edna Carlsten, Peter J. Michelsen To be Honored

Two former faculty members will be honored by having their names given to rooms in the new Fine Arts Center now under construction on campus. They are Miss Edna Carlsten, chairman of the art department from 1923 to 1961 and the late Peter J. Michelsen, director of the music department from 1931 to his retirement in 1954. He died in 1964 at age 80. Miss Carlsten still resides in Stevens Point, enjoying a happy retirement. This past winter the traditional campus "Winter Carnival" was dedicated to her.

It is the art gallery in the Fine Arts Center which will bear her name, and the music recital hall will be a fine memorial for "Peter J."



Karen Francis Gibbs

Mrs. Karen Francis Gibbs, a first grade teacher at Oshkosh, was named an Outstanding Young Educator by the Oshkosh Jaycees this year. Karen graduated from the University in 1962.

(Continued on next Col.)

Tom Kleiber's

Sports Corner

Pointers Win Co-Championship

Enroute to a share of the Wisconsin State University Conference basketball championship and a 19-4 overall record, the best by a Stevens Point team in better than 20 years, the Pointers fell just two points and one win short of possible national recognition.

Both Coach Bob Krueger's Pointers and Stout State finished WSUC regular season action with identical 14-2 marks. This necessitated a playoff game to determine the conference's representative in the National Association of Intercollegiate Athletics District 14 Tournament.

A three-way telephone hook-up between WSUC Commissioner Fred Jacoby in Madison, Stevens Point Athletic Director Krueger in Point and Stout's AD Ray Johnson in Menomonie was utilized to determine the site of the playoff encounter.

A coin flip was won by Stout and it hosted the game on Mar. 1 before an overflow crowd of 2,600 fans. The Bludevils built a 20-point margin at 78-58 with just over nine minutes to play and it appeared the chances of Stevens Point seemed impossible. But behind the torrid outside shooting of sophomore guard Quinn Vanden Heuvel, the Pointers fought back and had a chance to tie the game with a final shot at the buzzer, but lost 90-88.

Vanden Heuvel, a 6-2 Kaukauna product, led all scorers with 31 points . . . 16 of them in the final nine minutes before he fouled out with two minutes to go. So on an unhappy note the Pointers ended what otherwise was very successful.

Stout trounced Lakeland College of Sheboygan in the District 14 tourney and represented Wisconsin in the NAIA Tournament in Kansas City. Here the Bludevils gained national recognition by winning their opening game and then by losing in overtime to the eventual runnerup.

The tie for the championship was the first title for the Pointers under Coach Krueger, who has been at the helm since 1963. The last championship for a Stevens Point team was in 1961 when it had a 10-2 record under the late Hale Quandt.

The 19 wins is an all-time high

"The citation honoring Mrs. Gibbs as an outstanding educator mentions her creative and innovative teaching, and gives special note to her introduction of a concentrated phonics program at Franklin School, where she teaches," according to an article in an Oshkosh newspaper.

"... she exemplifies the attributes desired in modern day teachers," noted another newspaper article.

"Mrs. Gibbs, who is 27, has used the same phonics program and materials throughout her seven years of first grade teaching. When a student at Wisconsin State University-Stevens Point Mrs. Gibbs' adviser was a consultant to the book she now uses," wrote an Oshkosh reporter.

(The teacher referred to is Mrs. Mary Samter, Associate Professor of Education, at that time supervising teacher in the Campus Laboratory School's first grade and consultant for the book *Reading With Phonics*, a J. B. Lippincott Co. publication).

Mrs. Gibbs' husband, Boyd Gibbs, '61 teaches English at Oshkosh High school. They have a son, Scott, 6.

Mrs. Gibbs was recommended for the honor by her teacher colleagues. The method Mrs. Gibbs employs to teach reading has had such success that it has been adopted in all six first grades in her school this year for the first time.

and the 19-4 mark is the best since the 1948 team compiled a 12-2 record. In 1935 the Pointers were 15-0 and in 1933 they were 18-0. Both teams were coached by Eddie Kotal.

This first Pointer title in eight seasons was an upward struggle in the later stages, although it started out as if the Pointers would have an easy road to the championship.

Stout, along with Stevens Point, were the preseason picks by the conference coaches to replace Oshkosh State as the champion. In its first outing of the year Stevens Point disposed of Stout by a 77-70 count on the Bludevils home floor. That was the first of six straight conference wins for the Pointers and it was the only loss for Stout until then.

It was at this stage of the season that the road suddenly became cluttered with blockades for the Pointers. First it was a surprising 75-68 setback at home to Eau Claire State to be followed a week later by a narrow 71-70 loss to Stout. This was also at home. So within a matter of a week the Pointers found themselves looking up at Stout . . . one game behind.

Still remaining on the Pointers' schedule were tough road games with Platteville and Eau Claire and a home date with arch rival Oshkosh. But as it turned out it was none of these three games that caused the most trouble.

On the Monday following the loss to Stout, the Pointers had an away game with Whitewater. The Warhawks had won just one game and it appeared, at least on paper, that the Pointers would have little trouble registering their seventh win against the two lone setbacks.

That wasn't the case as Whitewater played its best ball of the season for the first 20 minutes while Stevens Point was suffering a letdown. With a lead of 42-29 at halftime the Warhawks were on the verge of eliminating the Pointers from the WSUC championship picture. This lead grew to 15 points and it wasn't until Tom Ritzenthaler found the range with eight straight field goals that Stevens Point found the momentum that it had in the early part of the season.

The Pointers won 74-71 and this second half comeback carried them to seven straight wins. Platteville and Eau Claire provided nothing more than token resistance. The same night that the Pointers defeated Whitewater, Stout was easily defeated by Superior State in the upset of the season. This was the Bludevils' second loss . . . the same as Stevens Point.

The key to the Pointers' 1968-69 success was the unselfishness of the entire team. It was not a five-man team, but rather an eight-man squad with each player seeing almost equal action.

All five of the Pointer starters finished the season in double figures with Tom Ritzenthaler, 6-4 Baraboo sophomore, pacing the way with a 15.8 mark. He was followed by 6-8 center Mike Hughes of Wausau with a 14.1 average.

Hughes, who set an all-time single season record in 1967-68 with 412 points, gave up numerous scoring chances this season for the easier shot by a teammate. He also almost singlehandedly controlled the backboards for the Pointers this year with 332 rebounds.

After this successful of a year, what can be expected next season? Gone will be the rebounding strength of Hughes, the backcourt coolness of DeFauw and the reserve strength of Clements; but returning will be the scoring potential of the Ritzenthalers and Vanden Heuvel and the possibility of several top freshmen that Coach Krueger has headed for Stevens Point.



Pat O'Halloran

Pat O'Halloran, who is credited by many for building Oshkosh State into a football power not only in the Wisconsin State University Conference but also throughout the midwest, will take over the Head Coaching position at Stevens Point next season.

Stevens Point Athletic Director Robert Krueger made the announcement recently of the 39-year-old O'Halloran to fill the opening created when Duaine Counsell resigned after the 1968 season.

"We feel we have the best man for the job," said Krueger. "He comes to us with the highest of recommendations from everyone he's been associated with at Oshkosh."

"He's had an outstanding record and on top of this, he is considered an excellent recruiter," Krueger added. "Nowadays, to have a successful college team either the head coach or one of his assistants must be an outstanding recruiter and we feel O'Halloran meets these requirements."

O'Halloran has been at Oshkosh since 1966. Oshkosh tied for the championship in 1967 and finished second last year.

He came to Oshkosh after a very successful high school coaching career at New Berlin, where his teams compiled a 15-7-2 record in three years, with a Parkland Conference championship in 1964.

"I've always wanted to coach in college," remarked O'Halloran. "I took the Oshkosh position in order to gain the necessary experience and have been looking for the right opportunity."

"I feel Stevens Point has a real fine program, and I am looking forward to an exciting challenge," he added.

Because of his closeness to the defensive alignment at Oshkosh, O'Halloran feels that the strong point of many college teams is its defense, but he intends to strive for a balance between the offense and the defense.

O'Halloran did not feel that he had lost any great amount of time recruiting by just being hired. "It's true we've gotten a later start than most schools, but we can get the job done."

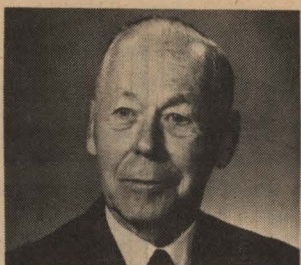
O'Halloran received his master's degree from the University of Wisconsin in 1966. He began his football coaching career at Republic High School in Kansas in 1952 and in 1956 went to the Colorado State School for the Blind, where he developed a wrestling and physical education program. In 1957 he became coach at Waukesha Memorial High School and led them to the Catholic Conference championship in 1960 and the number one ranking in the state.

He is the father of six children, five boys and a girl.

UNIVERSITY ALUMNI NEWS

Frederic "Rick" Frederick, Director of Alumni Relations
Ellen Specht, Editor
John Anderson, Associate Editor
Alumni Office: Nelson Hall
Telephone: 341-1251, Ext. 256

NORM'S NOTES



As I meet you again through this medium, I am thrilled with the memories of experiences that these past months have given me. While I have looked forward to many happy visits in actually meeting you, so many of you that I haven't seen for years, I have also had the satisfaction of sharing memories of the wonderful years we had at Stevens Point as classmates or as students in my classes. What a real privilege this has been!

It has also been a great education for me to help share in a small way the very efficient and cooperative work of our Alumni Office staff and the very encouraging response from you who are now active alums, together with your interest and plans

for a really growing Alumni organization in our state and over the country.

One thing that I hope will be even more effective; that is to work together to locate many of our people for whom we have no definite address. You can help much in keeping us informed of any in your area who should belong to our Association. We need to locate them.

You too, then, will help us to realize our dreams for WSU, Stevens Point, as you plan to come back for Homecoming, October 18 or at Milwaukee early in November.

It will be a thrill for us to shake hands again. Thanks for your response. Welcome back.

WSU Students Visited Russia This Spring

Stevens Point students were among 146 from nine Wisconsin State Universities who jetted to Russia for two weeks during spring recess.

It was the first such trip arranged on a system wide basis by the State Universities. When announced the tour brought forth twice as many applications from students as could be accepted. The trip cost the students about \$600 each for everything but personal spending.

The students and their faculty escorts had a first hand look at the people and institutions of the nation they have been studying in their Wisconsin classrooms.

The Scandinavian Airlines System DC-8 flew nonstop from Chicago to Helsinki, Finland, March 29. The WSU group went from there by bus to Leningrad. Near the Russian border they were joined by Russian guides and interpreters for the tour of Leningrad, Novgorod, Kieve and Moscow.

The students were able to visit with Russian university students in Leningrad and Moscow and visited the Hermitage museum in Leningrad, the Young Pioneers Palace in Kieve and special English teaching and primary schools in Moscow.

The group returned nonstop from Copenhagen to Chicago, April 12.

PLEASE CLIP AND MAIL
Membership Coupon
WSU-STEVENS POINT ALUMNI
ASSOCIATION

Check type:

Family (husband & wife)\$12.00
Regular10.00
Life100.00
Family Life (husband & wife) ..125.00
(Life memberships can be paid in four annual payments)

Name _____

Address _____

City _____ State _____

Zip Code _____

Wife's Maiden Name, if a WSU-St. Pt. Alum. _____

Check enclosed ☐ Amount \$ _____

ALUMNI HOMECOMING EVENTS

Friday-October 17

6:30- 7:30 Cocktail Hour
7:30- 9:30 Alumni Banquet
10:00-12:00 Alumni Dance

Saturday-October 18

9:00 Alumni Registration
University Center
10:00 Homecoming Parade
9:00-10:00 Dutch Treat Brunch-
University Center
Noon Lunch for Men's Glee Club
Alumni
1:30 Football Game
Halftime Norman Knutzen and
his Men's Glee Club Alumni
5:00 "S" Club Alumni Banquet
8:00 Homecoming Dance

Sunday-October 19

9:00 Golf Tournament
Stevens Point Country Club
12:00 Luncheon

Alumni Assoc. Life Members

(Continued from page 6)

Mr. and Mrs. Richard Toser
Stevens Point, Wisconsin
Mrs. Wayne Towne
West Allis, Wisconsin
Phyllis Umlauf
Phillips, Wisconsin
Mr. and Mrs. Carl Vetter
Stevens Point, Wisconsin
Mr. and Mrs. William Vickerstaff
Stevens Point, Wisconsin
John Vitek
Iowa City, Iowa
Mr. and Mrs. Norman Wanta
Stevens Point, Wisconsin
Marjorie Warner
Stevens Point, Wisconsin
Kenneth Willett
Stevens Point, Wisconsin
Glenn Zipp
Peoria, Illinois
Evelyn Pergande
Merrill, Wisconsin
Mr. and Mrs. John Polzin
Clintonville, Wisconsin
Mrs. Gladys Putney
Stevens Point, Wisconsin
Mr. and Mrs. Orland Radke
Stevens Point, Wisconsin
May Roach
Eau Claire, Wisconsin
Mrs. Mary Samter
Stevens Point, Wisconsin
Kurt Schmeller
Bayside, New York
Dr. and Mrs. Donald Schulz
Shawano, Wisconsin
Myron Sharkey
Rhineland, Wisconsin
Mr. and Mrs. Dennis Shrank
Cedarburg, Wisconsin
Mr. and Mrs. Ray Specht
Stevens Point, Wisconsin
John Steiner
Waupaca, Wisconsin
Mr. and Mrs. Theodore Steinke
Dallas, Texas
James Stoltenberg
Merrill, Wisconsin
Wilmarth Thayer
Wittenberg, Wisconsin

ALUMNI TOUR

I am interested in the following tour. Please send me more information.

Orient, Summer '70 _____

Acapulco, Dec. '69. Put me down for this one. Enclosed is my \$50 deposit.

Name _____

St. Address _____

City _____ State _____ Zip _____

I am a member of the Alumni Assoc. _____

Enclosed are my membership coupon and dues _____

To: WSU Stevens Point Alumni Assoc.
Nelson Hall
Stevens Point, Wis. 54481

Enclosed is \$ _____. Please send _____ copies of the 75TH
HISTORY OF WISCONSIN STATE UNIVERSITY AT STEVENS
POINT to:

Name _____

Address _____

(Price per copy — \$2.50) Zip _____

STUDENT PLANNED HOMECOMING EVENTS

Oct. 12 — Allen Center Program
Board Kick-Off Dance, 8-
11:30 Upper level Allen
Center
Oct. 18 — Alpha Phi Alumni Recep-
tion; (after parade) 11 a.m.
-Alpha Phi Suite or Roach
Hall
Oct. 18 — Alpha Phi Omega Alumni
Banquet, 8 p.m.
Oct. 16 — AWS Penny - A - Minute
Night
Oct. 18 — Hyer Hall Open House
Oct. 18 — Neale Hall Reception &
Tea for Alumni, 4 p.m.
Oct. 19 — P. E. M. M. Field Hockey
Game, 9 a.m.-(Alumni vs.
Club)
Oct. 17 — Phi Sigs Stag Party, 8 p.m.
Oct. 18 — Phi Sigs Homecoming
Game, 8 p.m.
Oct. 18 — Phi Sigs Alumni Meeting,
8:30 p.m.
Siasfi's Pledging Homecoming Week
Oct. 18 — Siasfi Parade and Float

Oct. 18 — Siasfi Post Game Party,
4:30 p.m.-Iverson
Oct. 18 — Sig Ep's Alumni Recep-
tion after Game- Sig Ep
House Dinner & Dance,
5:30 p.m.-Whiting Motor
Inn
Oct. 18 — Sig Pi's Homecoming Din-
ner and Dance, 7 p.m.
Out of Town
Oct. 19 — TKE's Alumni Party after
game-Papa Joe's Active
Banquet, after a l u m n i
party (6-8 p.m.) Active
Party, follows banquet
Oct. 18 — Theta Phi Alpha Picnic
for Alumni, 4 p.m.-City
Park
Oct. 18 — Knutzen Hall (Alumni,
parents, friends) Recep-
tion
Oct. 19 — Special Reception for Mr.
Knutzen, 1-6 p.m.

New job, promotion? Let us tell
your classmates about it. They
are interested in "Whatever be-
came of good ol' Joe?"



PHOTO BY MEL GLODOWSKI

AN OLD GRAD RETURNS. George Zimmer, 90, of Marshfield, came back for WSU's Diamond Jubilee. He is shown here with his son, Harold, left. George entered the old Normal when it opened in 1894, before he finished high school. He graduated with the class of '99.