

## Sigma Zetans Attend Annual Conclave

### Reppen Elected Pres. Of Teachers Assoc.

#### Chosen At Recent Madison Conference

Dr. Reppen of our College, has been awarded the honor of being elected President of the Association of Wisconsin Teachers Colleges at the recent meeting of the Association held in Madison last April 13th and 14th. A delegate assembly held Wednesday afternoon voted upon the three officers, the President, Vice President, and Secretary-Treasurer. The Vice President elected was Miss Georgianna Clark of Platteville Teachers College with Miss Hilda Oxby of Eau Claire Teachers College filling the post of Secretary-Treasurer. These officers, with the President, form the executive committee of the Teachers Association.

#### Purpose of Association

The purpose of the association is to discuss and further education in the Teachers Colleges of Wisconsin. Two conferences are held every year, usually in Madison.

### Assembly Features "Cowboys And Saddle Adventures"

Even before the days of Horace Greeley's advice, "Go west, young man, go west," that locality has held glamour dear to the heart of every boy.

College boys and girls who like cowboys and the Wild West will look forward to Monday's assembly, "Cowboys and Saddle Adventures" presented by Howard Dibble.

The program features (attention co-eds) Romance of the Plains and Prairies, Trick Roping, and How to Tie the Famous Diamond Hitch'. And, last but not least (attention men) a full Western Wardrobe.

#### NOTICE!

According to word received by Doctor Tolo April fifteenth the C. M. T. C. status allows for ten more applications from Portage County before the quota is reached. College men interested in making application for the Citizens Military Training Camp should consult Dr. Tolo.

### Twenty-Three Bands Registered For Annual Music Festival

#### Organizations And Soloists To Be Judged Friday

Another important date in the calendar of events of Central States' music department is Friday, April 22 when the Annual Music Festival will be held. George Cartmill, festival chairman, announces that thirty-two bands and orchestras have been registered to participate.

#### Festival Not Competitive

Judging bands and orchestras this year will be E. C. Moore, director of the Appleton High School Band and instructor of Lawrence College of Appleton, and Peter J. Michelsen, head of the music department of C. S. T. C. Both are members of the American Bandmasters' Association. Mr. Edgar Zobel of Ripon, director of music at Princeton, will judge brass solos. Mr. Zobel is trombone instructor for the summer music clinic at the University of Wisconsin and has recently been elected Honorary Life President of the Wisconsin Bandmasters' Association.

Mr. Fred Parfrey, flute and piccolo soloist with the C. S. T. C. Concert Band and Mr. Kenneth Storandt, clarinet soloist, will judge flute and reed solos. Miss Margaret Miller, piano soloist

with the C. S. T. C. Concert Orchestra, will judge piano solos. Neenah High To Lead Parade

The festival this year, in accordance with other music festivals throughout the state, will not be competitive. The criticisms which will be given will not be for the purpose of placing participants, but will be helpful in view of the approaching state festivals to be held in Marshfield on May 13 and in Merrill on May 20.

#### Dance In The Evening

Friday morning organizations and soloists will be criticized. The parade in the afternoon will be led by the Neenah High School Band. Three gold lyres will be awarded to the three best marching bands and a twirling baton will be given to the best drum major.

Everyone is invited to attend a dance in the Training School gymnasium Friday evening which will conclude the events of the day. A small admission will be charged.

The bands registered are: Almond, Amherst, Green Lake, Hancock, Marshfield, Marion, Mosinee, Neenah, Nekoosa, St. Mary's High, Oshkosh, Oxford, Pittsville, Port Edwards, Shawano, Spencer, Stevens Point, Thorpe, Wautoma, Westfield, Weyauwega, Wittenberg, and Wisconsin Rapids.

### Superintendent Lewis Speaks On Teachers And Teaching

#### Discussed Training For Teaching Work

R. F. Lewis, Superintendent of the Marshfield city schools, was guest speaker at a recent morning assembly. His talk was the second of the Senior Series sponsored by Forum. Bjorn Christenson, Forum president, presided. E. T. Smith introduced Mr. Lewis.

#### Friendly Speaker

Superintendent Lewis spoke in a friendly fashion, outlining his view of what a city superintendent expects of beginning teachers. His career as teacher, parent, and superintendent has given him a rounded outlook on this, a vital concern of teachers to be.

His address was enlivened by touches of humor appreciated by his audience.

#### Definition of Superintendent

He prefaced his address thus; "I suppose you are wondering just what sort of an animal a school superintendent might be". Lewis continued by giving a definition once given him. "A school superintendent is one too dumb to be a teacher but too smart to be a high school principal".

Lewis mentioned the place of professional and academic training in teacher preparation.

He intimated that Phi Beta Kappa keys were not essential in selection of teachers, but that sincerity of purpose and pleasing personality were.

In closing Lewis expressed the following wish. It is one appropriate for all Teachers College students. "You people who have chosen teaching for your life work will, I hope, always feel that you have chosen well".

### Rogers Elected Grand Recorder-Treasurer; Faust, Grand Editor

The local Sigma Zeta delegation which attended the National Sigma Zeta Conclave at Macomb, Illinois, last Friday and Saturday went to the meeting with one national officer and returned with two. At the business meeting Professor T. A. Rogers was reelected Grand Recorder-Treasurer and Gilbert W. Faust was elected Grand Editor. Others making the trip were Alvin Bucholz, Master Scientist of the local chapter, Ruth Johnson, Gladys Greve, and Roland Cady.

(Continued on page 2, Col. 4)

### "King" Kohls Chooses Queen

The secret is out—although some "wise birds" might say that they knew all along who Junior class president would choose as his partner to reign over the Prom, it has only now been announced that she is Miss Eleanor Bestul. Miss Bestul, who is now employed in the city, formerly attended the college and is well-known among the students.

#### Committees Appointed

King Charles and Queen Eleanor, on the evening of Saturday, April 30, will find themselves under tropical skies on the beautiful desert island, surrounded by the farstretching ocean. The orchestra pit will take on the form of a huge sea-shell on the shore. To make the picture complete, a grass hut will take the place of the punch-stand.

Following Mr. Kohls and Miss Bestul, both of Stevens Point, will be General Chairman Kenneth Storandt, of West Salem, and his partner, Miss Katherine Mozuch, of Stevens Point.

#### Kraemer To Play

Committees for the Prom have been appointed: Decorations: Eugene Belongia, chairman, Lucille Bleek, Dorothy Mullarkey, Harry Olingy, Don Olson, and Ted Meyer; Invitations: Fred Parfrey; Publicity, Jim Walsh; Advertising, Ben Lasky and Norm Hinkley.

The orchestra for the Prom is one of the most popular with the College students. It is Howard Kraemer who features the singing of Alice Cooper.

Published Weekly except holidays and examination periods, at Stevens Point by the students of the Central Wisconsin State Teachers College. Subscription Price \$2.00 per year.

Entered as second-class matter May 26, 1927, at the post office at Stevens Point, Wisconsin, under the Act of March 3, 1879.

#### EDITORIAL STAFF

Editor-in-chief ..... Theo. J. Ketterl, 816 Normal Ave., Phone 1603JX  
 Assistant Editor ..... Dearborn Spindler  
 Sports Editor ..... Harold Dregne  
 W. A. A. Notes ..... Eleanore Theisen  
 News Staff ..... Kathryn Becher, Granville Zimmer, Jim Walch, Margaret Miller  
 Society Editor ..... Marjorie Rogers  
 Proof Readers ..... Adeline Goetsch, Eileen Marx  
 Typists ..... Margaret Buchti, Irene Stauffacher, Lois Gene Peden

#### BUSINESS STAFF

Business Manager ..... Wm. Larson, 225 Algoma, Phone 1461-W  
 Circulation Manager ..... Jesse Caskey  
 Assistants ..... Emily Peterson, Jane Johnson, Dorothy Cook  
 Faculty Adviser ..... Raymond M. Rightsell  
 Pointer Office Phone 1584  
 College Office Information, Phone 224

#### THE DEADLY PLAYMATE

Two New Jersey girls, Ethel Sohl and Genevieve Owens, were recently convicted of murder in the first degree and sentenced to life imprisonment. Their accomplice, who was just as guilty, was not mentioned. This accomplice, too, has a girlish name, marijuana, which when literally translated means Mary-Jane. While Ethel Sohl and Genevieve Owens are paying their debt to society behind prison bars, it will be going its own free way, inciting other girls and boys to careers of crime and madness.

According to the Federal Narcotics bureau, a third of the estimated 100,000 marijuana addicts in the United States are children in their teens.

A few months ago, President Roosevelt signed the Marijuana Tax act, a Federal law which strictly defines the lawful use of the drug and the plant from which it comes. Violation of this law is punishable by a jail sentence of from 20 months to five years, with or without a \$2000 fine which is left to the discretion of the judge. The jail term, however, is mandatory.

There is no law that is strong enough to control the use of this deadly plant which thrives as readily as a common garden weed, unless it is backed by a campaign of public enlightenment. The people must be educated to the dangers of marijuana, and children must learn to protect themselves against the "reefer" and the "pink pill" with all their attendant horrors.—E. B.

Los Angeles "Collegian"

## Pres. Hyer Speaks At Rural Life Meeting

President Hyer gave a very enjoyable and interesting talk Monday evening at the Rural Life Club meeting. He related his experiences from Stevens Point to Lake Land, Florida where he spent his very well deserved vacation with Mrs. Hyer. He painted very vivid and colorful pictures of the various historical shrines and picturesque scenes they encountered on their trip. Many times his boyhood curiosity overcame him and led him on to new experience of rich and untold value. The Bok Tower, the orange groves, Ringling Brothers' training camp, Daytona Beach, and St. Augustine proved to be high points of his speech.

The community singing was led by Kenneth Bartels. William Clements rendered a reading "Paul Revere's Ride", and two vocal selections. Elva Twamley gave a serious declamation depicting the life of a poor newsboy and his dog "Scratch".

Mrs. J. F. Sims presented a gift of \$5.00 to the Mens Glee Club for their trip to Appleton. The Members of the Glee Club thank Mrs. Sims sincerely for her very welcome support.

## Y. W. C. A. Elects Officers At Meeting

On the Thursday evening before vacation the Y.W.C.A. met for the purpose of electing its officers for the coming year. Our popular president, Ledah Van Gilder, was re-elected, and the officers chosen to assist her are the following: vice president, Elizabeth Dopp; secretary, Luida Sanders; and treasurer, Elida Torkelson.

#### Program Postponed

Since the program planned for that evening was postponed, the reception of guests will take place tonight, April 21st, in the reception room at Nelson Hall. Each member is asked to bring a guest who is interested in the organization. Any other girls who are interested are cordially invited. There will be a speaker for the evening.

# E. T. Smith Presents "The Fine Arts And Life"

E. T. Smith, Director of Secondary Education, and head of the history department of the college, presented the thirteenth of the current series **Practical Values in High School Subjects.**

Smith's address was entitled "The Fine Arts and Life." An abridged version of the text follows:

"Ladies and Gentlemen of the radio audience: Many people whom we meet in everyday life seem to show boredom at the mention of fine arts. It is the purpose of this brief talk to show that fine arts are not remote from common man. Animals have ways of learning to meet the practical problems of living. No animal has the capacity of cultivating an appreciation of the fine arts. That ability is limited to the human mind, and is the most essential human characteristic. Appreciation of fine arts develops from understanding. The ideas of scientists seem to pass through a kind of assimilation in our minds. Sometimes the appeal is directly to the emotions. Logical or scientific analysis may show that they may appeal only to the emotions yet pleasure is derived because for the moment they take one out of the humdrum of everyday.

"A college sociology class recently made a study of motion pictures. Logical analysis was employed. Love, luck, lucre seemed to be the running theme. Every one is interested in these themes. They come out of humdrum life and mingle for the time in the garden of the gods. One may take the place of the hero or heroine. Certain types of stories appear again and again. There is the Cinderella theme, David and Goliath, and the strong man, Samson story. Modern as is the movie, it is based on ancient themes.

"The fine arts were an invention. On first hearing, this word invention may sound strange but it is exactly the right word to use. Human culture, the capacity to culture, is inborn. The animals had the capacity for movement. The human discovered the thrill of rhythmic movement. Dancing was invented. Storytelling followed. About the time of Homer someone set words to rhythm, Homeric verse. We may make similar allusion to the origin of practically all arts. No race is without some kind of artistic achievement.

"The world is a better place because of Hellenic Greece and Renaissance Italy. Not all of us can paint a beautiful picture or appreciate all arts. We learn our place as producer or consumer in the world of the fine arts. Today radio, cheap books, enable everyone to make themselves proficient in our distinctly human arts, the fine arts. Governments may perish, coinage may be debased, yet there remains the Mikado and Mendelsson's Spring Song."

## Band Concert To Be Given April 25

Next Monday evening, April 25, Central State Teachers College Concert Band under the direction of Professor Peter J. Michelsen will give a concert in the New High School Gymnasium for the State Parent Teachers' Association.

## Sigma Zeta

(Continued from page 1, Col. 4)  
 Sponsored by Kappa Chapter

The National Conclave was sponsored this year by the Kappa chapter at Western Illinois State Teachers College, and will be sponsored next year by Nu chapter at DeKalb. The high light of the meeting was an address by Dr. Arthur Holly Compton, noted physicist at the University of Chicago, who spoke on Cosmic Rays. Dr. Compton outlined the work of the recent expeditions which have measured cosmic radiations in all parts of the world and summarized the evidence which has been gathered as to the nature of the rays.

One afternoon was spent in a visit to the Illinois Electric Insulator Company, manufacturers of the porcelain insulators which are used in electrical work. The group was shown the entire manufacturing process from the mixing of the materials to the inspection of the final product. The host chapter then demonstrated some striking physical and chemical phenomena, including the production of cold light, and demonstrations on the nature of sound.

#### Officers Elected

At the banquet meeting, Prof. E. W. Schreiber, Grand Master Scientist, presented an illustrated lecture on "Early Mathematical Instruments". At the closing session the following slate of National officers was elected: Grand Master Scientist—H. W. Gould, of DeKalb, Illinois; Grand Vice Master Scientist—A. M. Reger, Kirksville, Missouri; Grand Recorder Treasurer—T. A. Rogers; Grand Historian—S. M. McClure, Lebanon, Illinois; Grand Editor, G. W. Faust.

**FORD V-8**  
**CARS & TRUCKS COMPLETE**  
 One Stop Sales & Service Station  
 Good Year Tires  
**STEVENS POINT MOTOR CO**  
 Phone 82

Paints, Oils, Varnishes,  
 Wallpaper & Glass.  
**BADGER PAINT STORE**  
 416 Main Street

## Mens Glee Club Receives Invitation To Music Assoc.

The Central State Mens Glee Club has received an invitation to membership in the National Federation of Music clubs. This club has member organizations in every state in the union making a total of 1,500 member organizations. This organization differs from the Associated Glee Clubs of America, an all-male-organization, of which the Mens Glee Club is also a member, in that there are both men's and women's choruses holding membership. The Mens Glee Club was sponsored for this honor by the Twilight Music Club of Stevens Point.

### Invited To Appleton

The Men's Glee Club has also received an invitation to participate in a choral program at the Lawrence Memorial chapel in Appleton on May 2. Only members of the National Federation of Glee Club are eligible for participation in this program.

## College Theater To Produce New Play

College Theater plans to release the play "A Penny a Day" soon. "A Penny a Day" was written by a student of C. S. T. C. In addition an all C. S. T. C. cast is being employed.

### Cast

Messrs. Colby and Runkel are production technicians. Miss Nancy Steiner is assistant director. Ted Meyer who will be remembered for his role in the recent theater production "Pot Boiler" is playing the leading role in "A Penny a Day". His supporting cast includes Miss Betty Hannon of Hannon Bach and Miss Margaret Becher. Vernon Hendricks who scored a distinct success as Menelaus in Greek drama, has also consented to join the cast.

Plan to attend C. S. T. C.'s first night in the near future.

## Omegas Sponsor Card Party In New Gym

Something a little different in the way of entertainment is promised for the first social affair after Lent.

A Card party to which everyone is invited is to be held in the New Gym tonight beginning at eight o'clock.

You can play any game you wish, and come alone, with your best girl, or in a group.

Refreshments will be served. The party is sponsored by Omega Mu Chi sorority. You may buy your tickets from any of the member or at the door for twenty-five cents per person.

## Nelson Hall Notes

Miss Helen Zimmerman of Portage visited Gladys Malinovsky last week end.

Jean Clark of Wausau spent several days with her sister this week.

Irene Dix spent the past week end in Milwaukee instead of having "him" come down.

Have you visited the "General Store" lately? Their lines are good spoken or shelved.

### Popular Places:

Luedtke's Hall when Life Magazine comes in.

Dix and Marcy's room when the Journal gets here.

Room 214 when the radio works. The office when the mail arrives. The Parlor when your call is "Down Stairs."

Mary Sanders of Wittenburg visited her sister, Luida, last week.

Mrs. Helbert, formerly Arletta Newhouse, of Wausau paid the crowd a visit last week.

Even the porch dressed for the Easter Parade. Notice the way it's fixed up. We also like the new curtains in the parlor.

"Billy" Weed visited on third floor on Monday of this week.

Elizabeth Davis who is a student at Madison visited her sister, Margaret this week.

Edna Earle visited friends in Chicago during the vacation.

Mrs. Finch spent the past week in Chicago where she visited her daughter.



It was a big vacation for everyone—some people visited in two towns. How about it, Don?... Have you noticed the pin Eyleene is wearing — Congratulation!... More new jobs, good work seniors. ... Again we see advertisements for the big spring function, the Junior prom—have you got your "dates", fellows?... Spring walks are fun, if you don't believe it ask Doris G. and friend. They are supposed to be authorities on the subject... Seems good to see all the "alums" back with us... Hurry and do your term papers 'cause we hear there's lots of fun in store these next few weeks... Are you going to the card party Thursday night—prizes and eats so they say.

## Tips On Tomes

Have you read the most popular outstanding hit of the year. **You Can't Take It With You** by the two prominent playwrights Miss Hart and George S. Kaufman? It is a comedy you will enjoy immensely for it's full of fun, wit, rillery, and crazy antics of a mad family.

**Dead End** a first class three act play by Sidney Kingsley gives a realistic picture of N. Y. tenement life, sensitive, stimulating, stirring drama which has done much to expose prevalent conditions.

**Pride and Prejudice** Helen Jerome's stage adaptation of Jane Austin novel is a play that faithfully brings to life a group of immortal characters acting their parts in a group of immortal scenes with England as the setting.

Paul Dottin in **The Life and Strange and Surprising Adventures of Daniel Defoe** reveals the fascinating adventurous restless life of the author of "Robinson Crusoe". His career in London was glamorous during that gay epoch in which he lived but the varied life that he led is more than enough to provide interest.

Elie Faure is universally recognized as one of the few really great art critics of all times. His **History of Art Series** tells the story of civilization from the dawn of history to the present as expressed through the images which man has created. The five volumes are simple and clear and will open new avenues of appreciation to the most advanced student, teacher, artist, or art critic.

WHERE YOU ALWAYS SEE  
SOMEONE YOU KNOW  
GOOD FOOD  
POINT CAFE  
501 Main St. Phone 482

FORMAL SANDALS  
\$1.98  
Others As Low As \$1.49  
Black Gold Silver White Sizes 3 to 9  
All Heel Heights  
The Big Shoe Store  
419 Main St.

## CAMPBELL'S

Just Arrived!  
12 New Styles

In  
**SANDALS**

For  
**FORMAL WEAR**

specially priced...

\$ 2.48

Select your formal shoes from these unusually smart and distinctive sandals. All heel heights in white to be tinted.



MENTION "THE POINTER"

Exclusive  
One-of-a-kind  
**Formals**  
7.95 to 22.50  
The  
Quality Store  
116 Strongs Ave.

Students!  
IN APPRECIATION OF THEIR SUPPORT  
**PATRONIZE**  
**POINTER**  
ADVERTISERS

# Carley Wins Lone Championship

## Coaches Name Honor Quintet

Don Johnston and Chet Rinka, last year's co-captains, were again placed on the Southern Division all-conference basketball team along with three members of the championship Oshkosh quintet, Daniels, Becker and Winkler. Johnston, all conference guard for three seasons, was pushed into the forward position opposite Rinka to make room for the two stellar Oshkosh backcourt men who were largely responsible, along with Daniels, the center, for the Sawdusters' winning the title.

Fred Nimz, captain of this year's five, was placed on the second honor team with one representative from Milwaukee and Platteville and two men from Whitewater:

- The all-conference teams:
- Johnston, f . . . . . Stevens Point
  - Rinka, f . . . . . Stevens Point
  - Daniels, c . . . . . Oshkosh
  - Becker, g . . . . . Oshkosh
  - Winkler, g . . . . . Oshkosh
- Second team:
- Bostrum, f . . . . . Platteville
  - Andrews, f . . . . . Whitewater
  - Nimz, c . . . . . Stevens Point
  - Krzoska, g . . . . . Milwaukee
  - Koenig, g . . . . . Whitewater

## Kotal Inaugurates Spring Intramural Program For The Coming Season

Coach Eddie Kotal has started an extensive spring sports program by calling for candidates for baseball, golf, tennis and track and is also holding spring football practice to get a line on the men who will carry the load next fall.

The state tennis tournament will be held in Stevens Point on May 27 at the same time that the golf tourney is being held at Oshkosh; Whitewater will be host to the college trackmen in the annual meet to be run off on May 28.

No definite dates have been set for any inter-collegiate competition in these sports but if prospects look good enough, Kotal will arrange meets.

The men who have signed up are:

Track Henry Warner, Tyrus Stefl, Van Dyke, Hitzke, Rusch, Christensen, Lawrence, Sprague, Jones, Mikich.

Tennis: Bill Miller, Jerry Dunn, Weston Burquest, Ernie Ruppel, Wayne Doolittle, Don Stien, Bob Olk, Woodrow Lucas, Granville Zimmer, Roman Baker, Clifford Sprague, "Red" Dregne.

Golf: Bob Olk, Bill Mailer, Bill Loewecke, Bob Reading, Park Joy, George Cashin, Bill Cashin, Jim Duecker, Don Johnston, Carley Sturm, Don Abrahamson, Al Sell, Clarence Benke, Van Dyke.

Baseball: Al Bucholz, Tyrus Stefl, Jerry Jones, Bill McDonald, Herb Schielke, Dan Young, Inman Whipple, Charlie Burch, Ray Mikich, Ray Wiersig, Earl Raab, Clyde Brunner, Bob Burkman, Chet Rinka, Al Sell, Bill Carley, Roman Baker, Gene Belongia, Harlow Henninger, Art Spieth, Bill Miller, R. Belongia, Bob Larson, Jack McDonald, Roy Otto, Fred Nimz, Ed Lietz.

## SHORTS IN SPORTS

Art Jossi, varsity eager from Milwaukee State Teachers College, was killed last week in an airplane crash in Milwaukee. . . . His companion, a classmate and owner of the plane, is seriously injured and is not expected to live. . . . The Pointer sends its condolences to his family in their hour of bereavement. . . . Don Johnston accepted a teaching position at Berlin, Wis. . . . He will be head basketball coach and assistant football coach as well as teaching biology, general science and physics. . . . Chet Rinka will teach at Dorchester, Wis. and will coach basketball. . . . He will also play baseball and basketball with the Dorchester Aces, a strong semi-pro outfit. . . . Bill Loewecke and Franklin Hitzke, co-captains elected for the 1938 grid season, will each lead a team in spring football practice. . . . Milo Militinovich's girl friend told him and Champ Whipple that she would go out that night with the man who won the fight. . . . After that, Militinovich was out for blood. . . . Whipple still rates with the young lady, however. . . . Bjorn Christenson and Ray Grandkoski, co-captains of the track team, are fast rounding into shape preparatory to the state meet. . . . Former collegians Milton Anderson, coach at Pittsville, Ray Urbans, coach at Granton, and Bob Marrs, at present attending Northwestern University, visited Central State this week. . . . Charles Torbenon, 135 pound boxing champion for three years is doing considerable business as a referee in the nearby high schools as well as the Point bouts. . . . Jim McGuire gave Herb Schielke smelling salts before he entered the ring to fight Militinovich. . . . Cheerful fellow. . . . To top it off, he admonished Schielke to "take it easy" just before Herb was knocked out. . . .

## Superior Wins Seven Of Eight

Central State's boxers copped only one championship last week at the State Teachers College gym. Bill Carley of Plover was the only leatherslinger who was able to stand up against the bruisers from Superior who won seven of the eight titles.

Boxing Coach Inman Whipple, Calvin Cook and Roman Baker had their winning streaks halted for the first time since they put on the gloves in college, Cook and Baker getting theirs in the first bout while Whipple waited until the semifinish to take the count.

Carley had too much power for his opponents and won the 165 pound title by blasting everything out of his way with that lethal left. Herb Schielke was the only other Point boxer to gain the finals before being knocked loose from their moorings.

The men who made the trip were Coach Kotal, Jim McGuire, Inman Whipple, Calvin Cook, Roman Baker, John Felix, Dan Young, Earl Michaels, Bill Carley, Alec Szymanski, Forest Eckels, and Bob Larson.

Last night the Central Staters fought Ripon in the first of a home and home series with the Redmen.

## SPORT QUIZ

1. Who is the outstanding girl golf player?
2. Who threw the longest forward pass in the Rose Bowl history?
3. Who is generally acknowledged as the best fighter for his weight in the world?
4. Who is known as the "Little Giant" of tennis?
5. Who was the outstanding girl athlete of a few years ago?
6. What All-American football player won a Rhodes Scholarship this year?
7. What is the penalty for a base runner being hit by a batted ball when he is off the base?
8. How many Olympic oaks did Jesse Owens bring back to the United States?
9. Who holds the world's record for the 440 yard run?
10. Who is the Cleveland Indian's rookie third baseman?

**SPORT SHOP**  
GOLF—TENNIS—BASEBALL  
EQUIPMENT  
422 Main St. Phone 1159



**BUSH COAT**  
Designed for a free and easy spring and summer  
**\$1.95**  
**THE MODERN TOGGERY**  
450 Main St.

## Mention "The Pointer"

**Quality Merchandise**  
AT  
**POPULAR PRICES**  
PLUS  
**Courteous and Efficient Service**  
**Equals Satisfaction**  
Also a Complete Line of  
**Fresh Fruit and Vegetables**  
**MAIN STREET**  
**FOOD MARKET**  
Free Delivery  
**Phone 289**

**For The Prom**  
For everything in formal and informal wear. At this biggest social event of the season, come to  
**SCHNABEL'S**  
HOTEL WHITING

**Bush Coats!**  
By Mc Gregor  
They're the latest thing for campus wear — You can get them for two and a half at

## W. A. A. Play Day To Be Held May 7

The W.A.A. girls are busy on their Play Day preparations for the Trans-Wisconsin Air Line Meet to be held at C.S.T.C. Saturday, May 7.

### Those Interested—Sign

All girls who are interested in becoming W.A.A. members must sign on the slip which is on the W.A.A. bulletin board on second floor across from Mr. Smith's room. These girls will be called upon to help with Play Day preparations. If they have participated in the required number of sports and their help with the Play Day preparations is satisfactory, they will be initiated into the W.A.A. on Play Day, May 7.

If you are interested in becoming a W.A.A. member be sure to sign on the slip. No one can be initiated into W.A.A. without helping with Play Day preparations so if you're interested be sure and sign.

### Tennis Is Starting

We've started our spring tennis—girls! We'll see you all at practice Monday and Wednesday nite at 4 P. M.

## Test-Cramming Causes Great Loss Of Weight

Students of our college paid for their cramming in the last examinations with 1,564 pounds of good, fairly solid flesh, according to a survey by the Bureau of Educational Surveys of New York of a representative group of students from various colleges in the United States. Each student here, according to this, would be losing nearly two pounds of this precious flesh... and merely because of studying!

### Prof. To Blame Too!

According to the Bureau, Professors and textbooks are as much to blame for cramming as the students themselves for instructors are very often guilty of not providing their classes with a sufficiently clear idea of the continuity of the course. (According to the Bureau).

### No More Tests!!

Because of this, we, the students of C. S. T. C. suggest that there be no exams or tests of any kind the remainder of this school year because of the tremendous mental and physical stress involved in preparation for them.

**FORMALS**  
Just arrived for the  
**PROM**  
**SMART SHOP**

Mention  
"The Pointer"

## HITHER AND YON

Superior State's boxing squad made quite an impressive showing in their meet with North Dakota "U"—taking the major bouts on the card, they scored a clean-cut victory.  
The Peptomist—Superior, Wis.

"One down and five to go." At least that's what happenings at Oshkosh State Teachers college indicate. Kolp's distance men have spent the first part of the '38 season practicing on the indoor track which, upon being measured, was found to be shorter per lap than anticipated. There is the chance that in outdoor meets the runners will "drop dead" at the end of the practiced distances. It would provide an easy win for the local squad.  
Echo Weekly, Milwaukee

Here is the more familiar jargon used on the diamond and may be picked up by the "bushers" or "yannigans" up in the "big top" for their "cup of coffee". Now the gent who parks in front of the "guesser" or the "homer" as some are wont to call him, dons the "tools of ignorance" and is commonly known as the "hind snatcher". He should be minus any "nubs" or "putty arms" and must be quite adept at gathering in "hooks", "dipsidoos", "mackerels", "No. two", "nutin' balls", and "high hard ones" or else the "teacher" will give him less "fish cakes" or maybe the "pink slips". "The skipper" likes "sweethearts" especially one with a good "shotgun" or even a "rubber arm" will do. A "submarine" artist who "deals from the bottom" and isn't a "scatter arm" doesn't have to be a "wood player". Performers shouldn't pay any attention to the "wolves" when the "orchard" or in some cases in a "cigar box" as found in the "horse and buggy" league, nor blame "clinkers" on a "contractor's back yard".  
St. Norberts Times

After visiting approximately 100 colleges in 22 states last year, Lew Fonseca said, "Illinois Wesleyan has the best baseball material of any small college I visited."  
Illinois Wesleyan Argus

**A. L. SHAFTON & CO.**  
DISTRIBUTORS OF  
Finest Canned Foods and  
Fresh Produce

**PORTABLE UNDERWOOD  
TYPEWRITERS**

Sold on easy monthly  
payments

**HUTTER BROS. PRINTING CO.**  
Phone 45W 624 Elk St.

## Says Looie...

### POETIC ART...

Spring is here,  
The grass is ris.  
I wonder where  
The flower is.  
—Reporter.

### IT CAN BE CURED, THOUGH...

The recession coming so close on the heels of the depression can't be history repeating itself. It's more like stammering.  
—Detroit News.

### IS THIS THE RIGHT ATTITUDE?...

I'd rather flunk my Wasserman test,  
Than read a poem by Eddie Guest!  
—Advance.

### OR WHY NOT DROP OF YOUR OWN ACCORD?...

If all the students who sleep through history were placed end to end, they'd be more comfortable.  
—El Toro.

### TOSS THAT ONE OFF...

Proud oceanic traveler, "I'm an author. I contribute to the Atlantic Monthly." Green faced friend, "Phooey, I contribute to the Atlantic daily."  
—Iron Horse.

### STRAINED...

"What's de trouble, Gertie?"  
"Aw, de spaghetti's too stringy."  
"Why doncher try it wid yer veil off?"  
—Traveler.

### TOWN HALL...

Happy is the mosquito who can pass the screen test.  
—Volante.  
"I'm stork mad," said the father of 15 children.  
—Eagle.  
"I passed the screen test," said the mosquito.  
—Volante.  
A dead Scotchman is an example of rigid economy.  
—Red and Black.

## TYPEWRITERS

and Typewriter Supplies  
SELLS—RENTS—REPAIRS  
PHELAN 112 SPRUCE ST.  
PHONE 1445-W

Students' New Bush Coats  
\$4.95

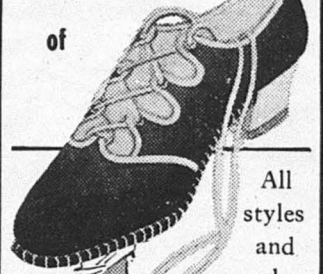
**ED. RAZNER**  
306 Main St.

## CITY FRUIT EXCHANGE

Fruits and Vegetables  
457 Main St. Phone 51

## SHIPPY SHOE STORE'S

### Spring Showing

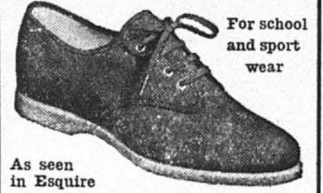


of  
All styles and color  
**Kedettes**  
Washable fabric shoes to wear with every summer costume.

### See the new

## KEDSMAN

The Sport Shoe for Men



As seen in Esquire

### Put Off The "Joy Rides"

until you can afford them. And then, perhaps, you will not care for them, but if you save your money regularly you will be in a position later on to enjoy yourself genuinely and permanently.

**FIRST NATIONAL BANK**  
Capital & Surplus \$262,000  
LARGEST IN PORTAGE COUNTY

**fresh COFFEE**  
ground to suit YOU

These delicious coffees have every bit of the flavor that money can buy. Buy them all—you will find one that you'll want to use regularly.

SEE IT GROUND TO YOUR SPECIFICATIONS

**BIG A fresh COFFEE SERVICE**

BIG A COFFEES ARE ALWAYS FRESH

## Shoes Are Shoe Until Silly Huaraches Surely Shoe Shoes Senseless, Toeless, Heel-less, Shapeless Footwear Furnishes Funniest Feminine Fastidity

A long time ago a walrus said to a carpenter that the time had come to speak of ships and shoes and sealing wax and cabbages and kings. Today, when sealing wax and kings are forgotten things, "cabbages are beautiful" and ships are discussed under the heading of armament, what is there left but shoes? And a very timely subject is with huaraches being featured by gullible females.

Huaraches are shoes. At least, they are optimistically placed in that category. They are those toeless and heel-less little woven leather numbers, whose uses vary from a bedroom slipper to a street shoe. What some bewildered people can't understand is how the wearer of huaraches obtains them since the name is unpronounceable.

Of course, what they really don't understand, any girl will tell them, is the law of equilibrium which demands that things must be equally balanced. Since the heads of the females are adorned with the funny looking hats that are being worn, the feet must have something equally strange. Hence, huaraches.

Such things as comfort and practicability may have something to do with it, and probably have, since these shoes afford the same ease as going barefoot does. That's something the shoe affords the individual.

### CENTRAL STATE TEACHERS COLLEGE

Easily Accessible. Expense Relatively Low. Location Unsurpassed for Healthfulness. An Influence as well as a School. Credits Accepted at all Universities. Degree Courses for all Teachers. Special Training for Home Economics and Rural Education. Send for Literature.

STEVENS POINT, WIS.

The professor was delivering the last lecture of the term. He told the students with much emphasis that he expected them to devote all their time to preparing for the final examination.

"The examination papers are now in the hands of the printer," he concluded. "Now, is there any question you would like answered?"

Silence prevailed for a moment. Then a voice piped up: "Who is the printer?"

### IS IT YOU?

She's short ... dark ... good-looking ... eyes catch one's attention ... proves herself a smart girl in classes ... N.Y.A. worker ... lives to east and north—not far away ... goes, oh, so steady ... can be reached at 652 ... has somewhat of an interest in Eat Shop ... school interests seem to be English and history.

Peppiest guy in school ... works for a living ... seen at hotel ... not very handsome—doesn't need looks ... footballer ... much of an interest in athletics ... well built physically ... fairly dark ... snappy eyes ... a crooked smile you like to watch ... popular with his own set and all others ... a real go-getter and good student.

216J is the telephone number (a college number) ... student back to finish work begun before ... tall ... dark ... not hard on eyes ... has characteristic voice ... usually called by last name ... good student ... learning to housekeep ... has a good start on cooking end ... one of the "brigade in white" ... well liked ... will leave us shortly.

Medium height, dark ... not beautiful but could be called attractive ... big eyes ... can't describe the nose ... pleasant girl ... easy to get along with ... excellent dancer ... all in all, good company ... all this is substantiated by stories she is well taken care of back home ... he drops in occasionally ... musical — she fiddles.

One of popular men on campus ... former student back at books again ... well liked ... not too tall ... handsome ... has real smile that is a sight worth seeing ... listed as Soph in directory ... lives in city ... should get out more with girls—not so much stag ... one of pair of real pals.

Tall girl ... hails from not far south of here ... not bad looking ... has quite an air of sophistication ... has been here long enough to be a real upper classman ... musical to quite a degree ... seems to prefer trombone and trumpet ... has connections with orchestra ... good dancer ... seen around most functions.

Home town here—it's east of here ... rather heavy in appearance ... as good natured as the day is long ... well liked ... pleasant smile chief characteristic of his round face ... blond ... a main street lad ... musical ... another Krupa ... sophomore.

Plump, smiling freshman girl ... seems to be getting along quite well here ... dark ... has nice features ... exhibits proper degree of shyness and reserve ... has been able to show her dramatic talent since coming here ... lives in town ... has fished for a whale in a pail ... musical in that she performs well on ivories.

Husky lad ... blond ... has quite a swagger ... cannot be called handsome ... still has an appeal for women and men alike ... well liked ... people swear by him ... works in hash house for living ... Soph ... lives some distance to S. E. ... frequently calls 652 ... getting a big kick from school.

### ANSWERS: To Sport Quiz

1. Patty Berg
2. Brick Miller
3. Henry Armstrong
4. Bryan Grant
5. Mildred Dedrickson
6. Byron White
7. Runner is out
8. Four
9. Bill Carr
10. Ken Keltner

### Mention "The Pointer"

**Welsby** DRY  
CLEANERS  
PROMPT SERVICE  
Phone 688

### A Song To The Cynic

Sing a song of homework.  
Make it, oh, so sad.  
Sing of each professor  
Who tries to drive us "mad".

Sing of all the nightlife,  
We grudgingly resist.  
Sing of blondes and red heads  
And brunettes that we've missed!

Sing a song of phantasy,  
A life lived all in books.  
Sing of tests, the mid-terms,  
Of hall and campus nooks.

Sing a song of "poverty,"  
Of how we count each penny.  
Sing of how we squeeze them,  
When there aren't so many.

Make this song a rhapsody,  
Of all we find about us.  
Then sing it to the cynic,  
Who does so love to flout us.



### A MESSAGE TO SENIORS

— who intend to enter a graduate school or professional school, attention is called to the facilities at Marquette University. Graduate courses leading to master's and doctor's degrees.

Professional curricula in medicine, law, dentistry, dental hygiene, nursing, engineering, journalism, business administration, platform art, dramatic art.

Marquette University is on the approved list of the Association of American Universities and is an accredited member of the North Central Association of Colleges. Each college and school is approved by the national bodies organized to set up educational standards.

Address  
The Student Adviser,  
Marquette University,  
for complete information.

### MARQUETTE UNIVERSITY

Milwaukee



### Bound Copies Of The Pointer

will soon be made up. Anyone interested in having one of these may purchase it for the cost of the work, \$1.00. If you would like one, please order through the Pointer editor or business manager.

Only a limited number can be made each year. If you are planning to get one place your order early.

**KREMBS HARDWARE COMPANY**  
Since 1863