

The schedule of events is as follows:

- Wednesday, October 21**  
WRA sale of pompons  
Alpha Kappa Lambda sale of buttons
- Thursday, October 22**  
Election of Queen and class officers  
Home Ec club taffy apple sale
- Friday, October 23**  
Hobo day with assembly at 3 o'clock at which time the Queen will be crowned  
Bonfire at 7:15 o'clock  
Informal dance at Delzell Hall after bonfire
- Saturday, October 24**  
Parade at 9:30  
Football game with Platteville at 2 o'clock  
Open House at Delzell Hall after game  
Sorority and fraternity dinners at 6 p.m.  
Dance at P. J. Jacobs gym at 8:30 p.m.
- Sunday, October 25**  
Alpha Kappa Rho breakfast at 9 a.m.  
Men's Glee club concert at 2:30 in the auditorium  
Open House at Nelson Hall from 1:30 to 5 p.m.

## Sympathy

Students and faculty extend their deepest sympathy to Dr. Mary Elizabeth Smith, whose father and brother died last week. Miss Smith's father suffered a stroke at his home in Long Beach, California, while her brother in Tacoma, Washington, was killed accidentally a few days before the death of her father.

## CSC Greeks Prepare Pledge Dinners

The social fraternities and sororities on campus will hold their annual alumni and pledge dinners on Homecoming night, Saturday, October 24 at 6 p.m.

Psi Beta Psi has chosen to hold its annual dinner at the All-American Cafe. Mary Walrath is in charge of decorations; Vivian Schultz, program and Mary Ann Baumer, invitations. Janice Thurston, Delores McLees and Penelope Bullock will provide transportation.

The Tau Gammas will hold their pledge dinner at the St. George hotel. General co-chairmen in charge are Grace Collins and Jane Schultz. Other committees are: entertainment, Betty Kussow; decorations, Gloria Suckow and invitations, Jo Daniels.

The Omega dinner will be held at the Meadows. General chairman is Donna Thompson. Bobbie Anderson and Eileen Schieb are co-chairmen of the decoration committee. In charge of entertainment is Carol Corliss, and of transportation, Pauline Vincent and Sally Scribner.

Phi Sigma Epsilon will hold their dinner at the All-American Cafe. Terry Pease and Bob Reed are general chairmen.

Sigma Phi Epsilon plan to hold their alumni dinner at the Country Spa. General chairman of the dinner is Homer Plumb.

## Sixty Strong Glee Club To Make Debut In Homecoming Concert

Forty-five new voices and three new selections (new to regular Men's Glee club followers) will be featured in the club's first appearance of the year on Homecoming Sunday afternoon, October 25, at 2:30 p.m. in the college auditorium. Norman E. Knutzen, in his 18th year with the club, will be the director for the annual affair.

The new numbers learned by the 60 voice Glee Club are: "Brothers Sing On," Grieg; "March of the Men of Harlech," Norden; and "America the Beautiful," Ward. The first two, in addition to the ever-popular "Halls of Ivy," Russell-Knight, and "Juanita," Norton, will make up the opening group of songs.

The entire club will also close the afternoon's program with these four selections: "The Drum," Gibson; "Jubilate Amen," Kjerulf; "America the Beautiful," Ward; and "The Purple and the Gold," Pray-Perclival.

Three soloists and a double quartette will appear between the groups of songs sung by the whole Glee

# Homecoming Week's Here

## Parades, Dances, Campaigning, Bonfires, Football Liven Campus

"U Rah, Rah, Pointer!" Come on gang and join the fun! Let's make this the best Homecoming weekend CSC has ever seen.

The activities will begin Friday afternoon at 3 o'clock with an assembly in the auditorium, during which time the Queen will be crowned. The Homecoming queen will be elected today from one of the following candidates: Alice Jean Allen, sponsored by "the Independents"; Felisa Borja, chosen by the "S" club; Grace Collins, representing the Sigma Phi Epsilon; and Betty Crook, Phi Sigma Epsilon fraternity.

Friday is also CSC's official "Hobo day" when both the student body and faculty let their hair down and become "regular bums" for a day. The "raged" rivalry will be chosen during the assembly from among the worst hoboes of the crowd.

That evening at 7:15 o'clock, the pep rally will be held around a large bonfire built by the freshmen on Schmeckle Field. In charge of bonfire preparations are Gehr Jorgensen, James Patterson, and James Andersen. The college Swing Band will play for the informal dance to be held at Delzell Hall following this pep session.

What with all the guarded whispers about the various floats, it seems that this year's parade will top all previous ones. So don't miss the Homecoming parade scheduled for 9:30 a.m. on Saturday. Earl Grow is the parade marshal and in charge of the order of floats of the various organizations. The parade will start from the campus and will go down Clark street to the square and back on Main street, to the college.

Leading the parade will be the college band under the baton of Peter J. Michelsen, Central State college music director. The college band will be composed of the present student members and the alumni members back at CSC for the week-end activities. St. Joseph's Academy band will march and several out-of-town high school bands have been invited to take part in the parade. The bands and their directors that have accepted to date are: The 75 piece Portage band, Norman Hinkle, director; Wautoma, 50 pieces, directed by Harvard Erdman; Waupaca, 45 pieces, Sam Winch, director; and Port Edward, 55 pieces, Robert Williams, director. Hinkle, Erdman, and Winch are former CSC students who received music training under Mr. Michelsen.

A noon luncheon, prepared by the girls in the band, will be served the bandmasters and the college band members in the band room. The home economics girls are preparing the lunch for the high school bands and this will be served in the home economics parlors.

The climax to the activities will be the football game with Platteville at 2 o'clock Saturday afternoon, followed by open house at Delzell Hall. Sponsored by the Alumni association, the open house is for the faculty, students, and alumni. Sororities and fraternities will have their annual "alum dinners" at 6 o'clock.

The Homecoming dance will be held at P. J. Jacobs gym, 8:30 p.m. to 12:30 a.m. The "S" club, sponsors for the affair, have engaged Billy Uthmeier and his band from Marshfield, who are noted for

Club. Charlotte Reichel, contralto, accompanied by Harold Kussow, will sing, as will Wayne Salter and Marvin Holm. All are alumni.

The Glee club's double quartette, composed of Ken Stewart, Homer Plumb, Ellis Weaver, Ken Kurlbut, Bud Eskritt, Jerry Boettcher, Roy Hackbart, Dave Ross, and Larry Katch, will sing "The Rift Song," Romberg, and "When Day Is Done," Katcher.

Warren E. Blodgett, president of the Central State Alumni association, and Mrs. Frank N. Spindler, Glee club mother, will greet the alumni between numbers.

Glee club accompanists are Ruth Ann Charlesworth and Gwen Fischer. Guests accompanists for the Homecoming concert will be Edward J. Plank, Frank Wesley, and Robert Westensberger, all alumni and former accompanists for the Glee club.

Quite a number of Glee club alumni are expected to be on hand to help the new boys out.

their renditions of "new time, old time, any time."

Sunday afternoon at 2:30 o'clock the Homecoming festivities will take place with the annual concert presented by the Men's Glee club in the auditorium.

Alpha Kappa Rho, honorary music fraternity, will hold its annual breakfast on Sunday at 9 o'clock in the St. George Hotel.

All the present members, alumni, faculty, guests, and pledges will be at the breakfast. Entertainment will be provided by the pledges.

LaVern Anderson, president of the fraternity, is in charge of the breakfast and will act as toastmaster.

Nelson Hall will hold open house on Sunday from 1:30 to 5 o'clock. Gladys Lehmann is chairman of this affair.

Students in charge of the Homecoming activities are: Robert Ullsperger, chairman; James Mulady and Rose Marie Christoffersen, co-chairmen of the publicity committee; Tom Wirkus, pep band; Earl Grow, parade marshal; Ray and Barbara Anderson, assembly program; and Jerry Boettcher, Betty Crook, Fred



C'MON POINTERS! With a backing of four such peppy cheerleaders on, left to right, Eileen Schieb, Doris Moss, Pauline Vincent and Marge Smith, the "Pointers" cannot fail to get off to a rousing beginning and finish in the Homecoming tangle with Platteville on Saturday.

Schadewald, and Sally Scribner, general assistants.

## To Elect Class Officers

Election of class officers will take place today, along with the election of Homecoming queen. Balloting will be held in front of the library.

Up to Wednesday afternoon, the following have filed petitions: Freshman candidates for president, Dick Haas, vice-president, Robert Allen; secretary, Helen Bovee; treasurer, DeWayne Martin, and student council representative, Dave Behrendt.

Sophomore class candidates are as follows: President, Earl Grow, vice-president, Terry Pease, Ellis Weaver; secretary-treasurer, Lenore Gaylor; student council representative, Jack Frisch.

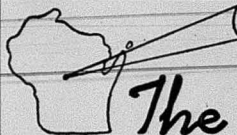
Juniors in the office race are: President, Roy Hackbart, Charles

Sohr, Carl Wieman; vice-president, Ken Kriz, Gladys Lehmann; secretary, Mary Lou Bloczynski, Jane Schultz; treasurer, Marge Gerhard; student council representative, Delores Thompson.

The following seniors have filed petitions: President, Jerry Baerwald, Bob Ullsperger; vice-president, Jerry Boettcher, Pat Rickett; secretary, Jo Ann Cuff; treasurer, Bob McMahon; student council representative, Donna Thompson.

Ed Jacobsen is the unanimous ballot choice of all classes as candidate for the office of president of Student Council.

Hey Youse Bums! Friday is Hobo Day. Let's not see none of them fancy duds. Win a prize for lookin' yer worst.



# THE CENTRAL STATE POINTER

SERIES VII VOL. III

Stevens Point, Wis., October 22, 1953

No. 3

## "It's Curtain Time" To Be Given At Cornelia Stabler Assembly

"Hats make the woman," says Cornelia Stabler, not a designer of milady's chapeaux, but one of America's leading monologists, who will appear at an assembly program on Wednesday, October 28, at 8 p.m. in the college auditorium.

In proof of her assertion this charming and talented lady proceeds to change herself into five different people by matching her hats to her characters in IT'S CURTAIN TIME, the program she will present here.

Business-like in a little green pillbox with a heavy snood, there's not a loose hair showing as Cornelia Stabler appears before her audience in the character of the secretary. Peering through a pair of green horn-rimmed glasses, she is efficient to her fingertips.

Suddenly appearing in a halo of pink geraniums, Miss Stabler, pink-gloved and with matching purse, is the feminine, warm-hearted and excited "Gail Banning," the leading character of the sequence.

One falls completely under the hypnotic spell of this artist's brilliant imagination as the plot thickens, involving many types of head adornment for as many varied characters. A white towel binds the

blonde curls of a chorus girl as she applies her make-up; a coral colored hat and wimple draped under the chin, with long coral gloves and heavy jewelry, suggest still another fascinating character. A gold and white turban, as high as those creations worn by Carmen Miranda, delights further the feminine eye.

Vividly written and brilliantly portrayed, IT'S CURTAIN TIME creates the illusion of a three act play as Cornelia Stabler peoples her stage and tells a story filled with human interest and keen suspense.

Miss Stabler is an actress, an author, and the director of a summer theatre. She received her early dramatic training at Swarthmore college and later returned there to direct the plays of the Little Theatre club. She took graduate work at Columbia university and also attended Theodorae Irvine's Studio for the Theatre in New York City. She has been heard on radio programs on the major networks and has written radio sketches as well as plays and monologues.

Her audiences reach from coast to coast, including the late President and Mrs. Roosevelt and their guests whom she entertained at the White

House. By way of USO camp shows she introduced some of her merriest characters to the troops in France, Belgium, and Germany. Upon her return she found herself in demand for informal talks on her experien-



Cornelia Stabler

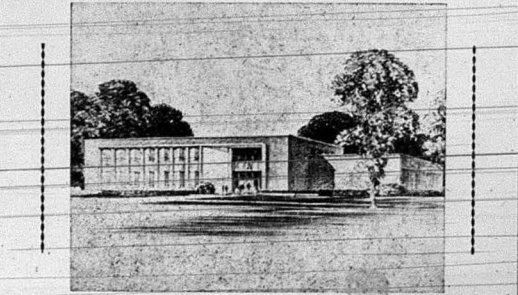
ces in "Europe Via USO." She has also entertained for USO in hospitals and camps throughout the United States.

She is presented to CSC students as a regular assembly number booked by the faculty assembly committee, with Miss Pauline Isaacson as chairman of the committee, assisted by Miss Cecelia Winkler, Gilbert W. Faust and Dr. Alf W. Harner.

## CSC Grads Placement Announced by Gotham

Dr. Raymond E. Gotham, director of the Training school, has announced the placement of many 1953 CSC graduates. The salary range for Primary was \$2,900 - \$4,182; Intermediate, \$2,750 - \$4,100; Secondary, \$3,000 - \$4,000; Rural, \$2,250 - \$3,350.

Placements in the Primary division are as follows: Sylvia Abrahamson, Edgerton; Arlene Altenburg, Wisconsin; Rapids; Pat Barrett, Manitowish; Bobbie Broeren, Wausau; Marilyn Gossage, South Milwaukee; Beverly Guzman, Stevens Point; Vivian Hofman, Wausau; Helen Isbner, Appleton; Rose Ann Kearns, Edgerton; Kay Leahy, (Continued on page 3)



APRIL, 1954, is the tentative date set for CSC's move into its new \$750,000 library, pictured above. The building is located on North Fremont Street, directly north of the college itself.

## "Stevie" Says

Welcome back to Central State, alums! Freshmen, welcome to your first CSC Homecoming! As all "Central States's" old and new know, there's just something in that air at Homecoming time that you can't and don't find on the campus at any other time! (And it's not just the smell of burning tires from the bonfire either). What is it? Why, of course you know! It's **SPRIT!**

But wait a minute — what is spirit? The American College Dictionary lists 30 possible definitions and a postscript (see ghost). Spirit is a vigorous sense of membership in a group. No matter where you are from, any part of the state, the nation or a foreign country — you are now a Central State! And alums, whatever and wherever your present station, you, too, are still a vital part of that good old CSC spirit. Spirit is an animating force. Nothing matters just as long as the team players Plat-tyville! At Homecoming time the team plays better, you yell louder and the songs sound better.

And so, as "Stevie" says, "More Central State spirit for me — whichever of the 30 definitions it might be — how about **YOU!**"

S.M.S.

## FAMILIAR FACES

Sharon Sutton and Ed Jacobson

Staunch, avid union leaders would be correct terminology for these senior CSC'ers. Not like old John L. but active executives of our own campus union at Delzell Hall. Rapids' Ed Jacobson and Sharon Sutton, who divides her time between Rhineland and South Bend, are manager and secretary, respectively. They both are enthusiastic over this year's improvement in the union, meaning student attendance.

Jake claims what used to be a part time job that allowed him time to study doesn't exist anymore with the 100 or more students who are putting in an appearance at the union almost every night. Sharon still feels there should be more games and the like to make it more than a touch and go proposition. They have asked everyone to come and join them, especially at the Thursday night dances featuring the college Swing Band. New ideas and suggestions are appreciated by the Union Board.

Sharon, in all home town loyalty, simply loves the hogad — team that is. By contrast she abhors, hates, etc. all cats and kittens. Both her roommate, Margie Benson, and Sharon delight in ginger ale. They consume gallons — unflavored! She also has a yen for lots of butter on everything.

When asked what, if any, were her future plans, she replied ecstatically, "Uh huh! June 19!" "So what's special about that?" we asked. "I'm

Jake, who has run and hitchhiked over thousands of miles, is the campus track star with a record of 4:23" for the mile. This "running" plays a rather important part in his every day life. It helps relax his mind and body after a hard day. It also keeps him in condition for those hitch hiking jaunts east of the Mississippi.

Last summer he sauntered down to Boston and "points East" just to see things. The summer before it was the Southern trail that enticed him



getting married — to Keith Rand of Eagle River." Everything else is unimportant to her now. She waits only for graduation and what follows.

Last summer she worked as a pharmacist's assistant. Very interesting work! Though she does prefer her practice teaching, for she has 24 bright and shining children.

Sharon, in addition to her work at the union, is active in Wesley, Primary Council, Omega Mu Chi, and has a part time job at Charter's (across from the high school).

Miss Sutton also happens to be another Rose Bowlite. It seems there was quite a crowd there!

She intends to teach in Milwaukee where Keith is studying engineering. She loves to keep house. . . oops! It was inevitable. She keeps saying that.

## Schmeckle Attends Nat'l Resources Board Meet

Fred J. Schmeckle traveled to Madison on Monday to attend a meeting of the Natural Resources Board sub-committee on Conservation. The subject discussed was the evaluation of conservation, as it is being taught in teacher training institutions.

Today he is attending a meeting of the Rotary club of Waukesha, where he will speak on the progress of Conservation education.

down to Miami. He arrived there with \$10 and went back to New Orleans (a real place) with \$5. Jake travels on a shoestring! Pun. Paradoxically, he is a local boy who hates to get out of town.

Back to dull, drab school affairs, Ed is a Chi Delt, not many left on the campus nowadays, a member of "S" Club, Wesley, and Great Books. He's particularly interested in those nice philosophical books of which he's a fervent reader. Might seem odd considering his object in Secondary lies in a Math major and Physics and Phy. Ed. minors.

Though he likes practice teaching in Junior high, he labeled his future of coaching track and teaching math as "boring." With a mind such as his, no wonder! But he is certain the army will delay it for a bit.

Ed is pinned to Mary Lund, a CSC graduate teaching at Beloit. Both would like to attend summer school this year to work on their master's. While Ed was at Madison taking a few courses, he had a part time job in a computing laboratory. Was thinking it might be a good job with a future. He could start at \$6000 a year!

His dreaming consists of planning another trip, maybe to the South west and Mexico. In this he also appreciates beauty — he likes to look at pretty girls.

## Padded Cell

by Benita Held

And so we meet again — Guess we'll start with most important things first — did you vote today?

With such beautiful weather, who can concentrate — along with Homecoming and 6-weeks tests? There's gotta be a change!

Seems like we knew a different version of this once, but it just goes to show that everything can be improved.

"Ladies, to this advice give heed — In controlling men. If at first you don't succeed, Cry, cry, cry again."

That one was signed by anonymous

We always have to pass the good word along, and with Homecoming, etc.. . . Anyway this description headline appeared in a London Newspaper: CAR-CARESS-CARELESS — CAR-LESS.

Seems that in weeks previous, we overlooked one of those gold, pearl-studded things that often has a lot of Greek markings on it. Well, to make the story short, Marge Gerhard became pinned to Paul Kroening, this summer. Also, Jackie Sattler received a diamond from James Wahlheiter, who is in the Air force cadets. Best wishes.

Then there was the dentist who married a manicurist. Marriage didn't last long, tho, they fought tooth and nail.

Oh yes, it's a small world, often its smaller than we think. An acquaintance (!) of ours, Bob Blomley (also a former student here) is in a nice government run joint in Missouri, and he just found that out. One day a guard called him over and asked if Bob knew who he was. After about three looks Bob became normal again — it was Dennis DeDecker, also a former student here. Bob and Dennis roomed together at Delzell Hall last year. For five weeks they had been living across the street from each other. Best part of it is, Denny owes Bob something like \$16 from last year.

That was our closing bit for this week, so if you answered "No" to our first question, get your nose out of this and go on up to second floor, where a ballot is just waiting for you. Happy Homecoming!

## Letters To The Editor

1924 Andreo Torrance, California

To the Pointer staff:

It very probably is Miss Glennon to whom I am indebted for copies of the Pointer. Since the whole staff contributes to our enjoyment of the paper, we wish to extend our thanks to each one of you.

A few days ago, the October 1 issue reached us. Mary Lynn read much of it, too. Both of the children wanted the "Purple and the Gold" sung to them. They don't know their mother can't carry pitches that high up.

The news of what many of our friends have been doing, and plan to do, was particularly interesting. In fact, it was like a good long letter from an old friend.

Thank you again, Leo Tolo (Editor's note: Mrs. Tolo is the widow of Dr. Harold M. Tolo, former history instructor at CSC, who died in September, 1952. She and her children are now living in California and she is employed at the Hardware-Mutuals office in Los Angeles).

Officer Candidate School U.S. Naval Station Newport, Rhode Island

Dear Editor:

By this time I suppose you are busy at work on the current edition of the POINTER. Believe me, I certainly would like to be back there.

This school is certainly different from good old CSC. I have never had to do so much studying in my life. We have classes every day Monday through Friday from 8 until 4

## Community Chest To Receive CSC Backing

Central State is again hopping on the bandwagon to support this year's Community Chest and Red Cross drive. Members of Phi Sigma Epsilon and Sigma Phi Epsilon have already made a house to house canvass for participation in the bloodmobile, Pledges of Omega Mu Chi, Psi Beta Psi and Tau Gamma Beta sororities will help pack the kits used by the volunteer solicitors in the project.

Robert Ullsperger, chairman of Homecoming has announced that Fredrick Vetter, chairman of the drive, will make an appeal to the community and to the student body during the half at the Homecoming game Saturday. Mr. Vetter stresses that this drive will be the only authorized one this year, a "community drive."

Those agencies benefiting from the Community chest drive are: Boy Scouts, Wisconsin Heart Association, Mental Health, United Defense, Children's Service, Sister Kenney Foundation, Hearing Society, Arthritis and Rheumatism groups, Catholic Welfare, Salvation army and YMCA.

## Pan Hell, I. S. Councils Elect Semester Officers

Inter-sorority and Pan Hell officers were elected for the first semester on October 5.

Pan Hell elected the following to serve as their officers: Jerry Boettcher, president; Donna Thompson, secretary and press representative; and Cary Edmund, treasurer. Officers for the Inter-sorority are: Jacquelyn Piel, president; Dorothy Gerner, secretary; and Ruth Ann Charlesworth, press representative.

Pan Hell is composed of representatives from all the sororities and fraternities on-campus, while Inter-sorority Council consists of representatives from the three sororities.



Central State College is happy to have you back on the campus to help us make our homecoming festivities an event you'll long remember. We hope you'll join in the spirit of our school's 1953 Homecoming celebration and make it the best event ever held here!

John E. Roberts Dean of Men

## Fraternities Announce Semester Pledging Lists

Pledges for the two social fraternities have been announced by Sigma Phi Epsilon, and Phi Sigma Epsilon.

The Sig Eps have pledged John Mrochek, Jack Frisch, Mark Farris, Ellis Weaver, Ralph Seefeldt, Bill Ruhsam, Bob Johnson, Ronald Larson, Roland Young and Lewis Mitness.

The pledge of the Phi Sig is Don Page.

o'clock, with a little military drill thrown in here and there. They throw at least 15 quizzes at us a week; then we get a big test every quarter, plus a final at the end.

On Saturday morning we have to stand inspection, and then we get liberty from 12 until 7 o'clock Sunday night. Newport is a rather nice city and is noted as a summer residence for the millionaires from New York. Yesterday we walked along the cliff where a large number of these mansions are located, and are they beautiful!

I will be graduating on November 13 and hope to see everyone soon after that, when I get home.

Sincerely,

Frank DeGuire

(Editor's note: Frank DeGuire was editor of the POINTER during 1951-52 and entered the navy last June after his graduation from CSC).



## Welcome Alums

Central State College again welcomes you to its campus. We are always glad to see you and hope you enjoy coming "home."

Friendly relations between a college and its alumni are a goal of every school. Each can do much for the other. We are glad to have an opportunity to show you our "growing" campus and discuss our objectives with you. We are always interested in hearing about your experiences, and you may be able to suggest ways in which we can serve you.

We hope that you'll enjoy the many activities planned for you.

Elizabeth Pfiffner Dean of Women

## Sharpen Your Pencils! Writing Talent Sought

In order to stimulate creative writing at Central State, Sigma Tau Delta, honorary English fraternity, is sponsoring a writing contest open to all CSC students.

A \$5 prize will be awarded for the best prose selection and another \$5 prize for the best poetry selection. Although there are no length requirements, the short, compact piece of writing stands the best chance of winning. The contest closes at noon, November 25. Contributions may be placed in baskets marked "Sigma Tau Contest" in either the Pointer office or Room 207.

Sigma Tau Deltans also decided to publish "Wordsworth," Central States' literary magazine, earlier than usual this year. The publication date is tentatively set for sometime in January. The contest winner's selections will be published in "Wordsworth" as will writings of high caliber received during the contest.

Dave Ross was named as editor of Wordsworth. Assisting him will be Maryjo Reznicek and Ruth Tallmadge. Sally Scribner will be in charge of lay-out, Joanne Wysocki of typing and advertising managers are Everett Moore and Bob Kono-pack.

Miss Reznicek, president of Sigma Tau, appointed the following standing committees: Food, chairman, Bernadelle Polivka, and Miss Wysocki; program, Jerry Boettcher, Dave Ross, and Lee Miller.

Miss Tallmadge and Miss Polivka will work with Leland M. Burroughs and Miss Mildred Davis in judging the creative writing contest. Shirley Kubisiak Schmidt is in charge of the contest's publicity.

The next Sigma Tau meeting will be held at Norman E. Knutson's cottage on Wednesday evening, October 28.

## Democrats Name Officers

Garle Turner was recently elected proxy of the Young Democrats club. Other officers are: Vice President, Jack Frisch; Secretary, Rosella Voight; Treasurer, Donna Exstrom.

## Name Committees For Sadie Hawkins Dance

Committees have been named for the Sadie Hawkins dance to be held on Friday, November 13. General chairman of the party is Gloria Sukow. Other committees are: Food, Cary Edmund, Rosemary Polzin, Corinne Weber, Judy Helntz and Nancy Monson; decorations, Beth Blomley, Treva Anderson, Barbara Gustafson; advertising, Muriel Beasly; Mary Bartlett, Audrey Ploepma; Sharon Zenner; entertainment, Frances Koch, Dorothy Gerner, Catherine Koch; tickets, Shirley Sheet; Darlene Zamzow and Betty Woolert.



(Gotham—continued from page 1)

Neenah; Marcella Luedtke, West Allis; Mary Lund, Beloit; Nancy Malchow, Racine; Margaret Miada, Green Bay; Joyce Moll, Appleton; Barbara Nelson, Wautoma; Nancy Pautz, Appleton; Patricia Poed, Wild Rose; Dejon Rothman, Kenosha; Jean Sarbacher, Neenah; Mildred Schram, Sheboygan; Marianne Schuelke, Nekeosa; Alice Tauchen, Wausau; Dorothy Sorensen, Milton Junction; Barbara Weisbrod, West Allis and Pat Fox, Nekeosa.

Intermediate division placements include Eunice Bauer, Appleton; Don Benz, Rhinelander; Joan Czerniewski, Muskego; Pat Derge, South Milwaukee; Janice Gruen, Mineral Point; Elmo Korn, Chippewa Falls; Harriet Korn, Chippewa Falls; Bob Kristianson, Delafield; Don Mayer, New Richmond; Arline Meister, Edgerton; Charlotte Morrill, Oconto; Arlon Parkin, Wittenberg; Joyce Pinkerton, Port Edwards; Jack Polzin, Marion; Ardis Raaths, Wausau; Gerry Schmidt, Anchorage, Alaska; Belvina Sherfiski, Marinette; Joan Summers, Wausau; Marlene Zastraw, Kenosha and Beverly Ziebarth, Beloit.

In the Secondary division placements include Kathryn Allen, Manawa; Oliver Andrews, Bonduel; Dick Berg, Rudolph; Virginia Cable, Iola; Glenna Clark, New Holstein; Sally Connor, Pardeeville; Donna Dahm, Wautoma; Bob Delhinger, Eagle River; Kelly Douglas, Tomahawk; Ann Elsen, Eagle River; Clarence Fritsch, Houghton Lake, Michigan; Marilyn Gilbert, Marion; Marlene Hartleb, Mishicot; Ferd Hirzy, Thorp; Frank Hoffman, Bowler; Richard Jansen, Unity; Phyllis Jarnick, Ripon; Mary Koehler, Abbotford; John Mallow, Marshfield; Dolores Newhall, Hortonville; Mary Pfiffner, Waukesha; Winne Pierre, Bear Creek; Delores Plaisne, Denmark; Ransom Rhode, Elroy; Verna Schaefer, Black River Falls; Wilma Schmeckle, Brussels; Frank Schmieder, Plymouth; Kathryn Stankevich, Rhinelander; Ruth Teetson, Seymour and Frank Wesley, Wisconsin Rapids.

In the Rural-Four year division are Mary Brittnacher, Green Bay; Henry Drechsler, Mauston; Robert Grulling, Merrill and Margaret Leitner, Rhinelander.

In the Rural-Three year division are Dorothy Johnson, Niagara and Elizabeth Torzewski, Wausau.

In the Rural-Two year division are Sally Hronk, Amherst; Phyllis Caskey, Laona; Clara Colrupe, Wau-paca County; Roy Habeck, Hancock; Phyllis Habeck, Hancock; Naomi Hackel, Colby; Helen Jones, Wisconsin Rapids, Route 1; Aurelle Marchell, Marathon County; Dorothy Palmer, Winneconne; Marion Scheels, Hayward; Mary Alice Schmitt, Vesper; Jean Wagner, Friendship and Dorothy Wallner, Vesper.

## Directors Announce Final Play Castings

Final casts for the three one-act plays, to be presented November 18 and 19 in the college auditorium, have been announced by the student directors.

The cast of "One Hundred Dollars," directed by Maryjo Reznicek, will be composed of Bill Collins as Leonard Preston; Patricia Sisel as Lucy Preston; Janet Madson, Ann; Kathleen Justman, Dora Reese; and Darlene Zamow, Mary. Technical director is Cleo Peterson. Crew members working with her will be: Stage properties, Jeanette Martin, chairman, Lily Sturkol, and Robert Allen; hand properties, Helene Lorenz, Pat Sroda; costumes, Marcella Skalski and Mary Lucas.

Making up the cast of "Ho," as directed by Jerry Boettcher, are Lew-lis Mitten as Captain Kenney; Eleanor Simon; Mrs. Kenney; Arnold Albrecht, Ben; Roger Hancock, the Steward; Ted Stanisewski, Slocum; Phillip Smith, Joe; and Leroy Clinton, Dale Borg and Cyril Firsens as seamen. Technical director is Ken Kriz. Staff members assisting him will be: Stage properties, Pat Malick, chairman, Rita Czerniewski, Earl Grow, hand properties, Daphne Porter, Donna Studzinski; costumes, Margie Bleuel and Janice Friedrich.

"The Pot Boiler," directed by Gladys Lehmann, will include Bill Jablonske as Thomas Pinickles Sud; Joe Weaver as Harold Woudley; Wendel Frenzel, Mr. Ivory; Larry Cook, Mr. Ruier; Marge Gerhard, Miss Ivory; Homer Plumb, Mr. Inkwell; and Joanne Wysocki, Mrs. Pencel. Frank Brocker is technical assistant. Technical staff crew members are: Stage properties, Connie Kelley, chairman, Sally Miller, Al Brown; hand properties, Donna Witt, Darlene Schimke, Carol Ruder and Lynn Gross.

Technical crew staff members who will work for all three plays are as follows: Setting, Gordon Bigalke, Jim Skasko, Ellis Erskitt, Dale Borg; costumes, Ellen Elde, chairman; make-up, Jeanette Suerhing, chairman, Betty Peterson, Alice Allen, Mike Johnston, Ann Wilz, Tere Reiland, Betty Woelert; lighting, Royce Wade, Bob Lindholm; publicity, Virginia Brisco, chairman, Donna Tucker, Phyllis Hammel; programs, Carol Peterson, Marlys Hvass; ushering, Mary Lou Bloczynski, chairman, Evelyn Kijek and Lynn Gross.

All three plays are being directed by students from Miss Pauline Isaacson's advanced speech classes. High schools in the area will be invited to attend the productions.



## Greetings Alumni

On behalf of the Faculty Alumni Relations Committee of Central State I would like to welcome all you alumni back to the campus. We hope that you are having a wonderful time here with us.

The faculty and students of Central State are trying to make this Homecoming the best ever, but we need your help! All of us will be looking for all of you at the open house at Delzell Hall after the football game on Saturday!

Marjorie Kerst  
Chairman, Alumni Committee

## Student Teachers Do On The Job Training

For further training in their chosen fields, some student teachers do additional practice teaching at P. J. Jacobs high school and the Vocational school. They do this in connection with practice at the Training school.

Home Economics majors who are doing this are Donna Thompson, clothing and Arlene Richmond, foods. Jeannette Diver is acting as an assistant instructor at a vocational school night class.

Don Taylor, Bill Kohls and Don Kott are teaching in the biology department at the high school, while Roger Wood is teaching chemistry. Royce Wade is strengthening his Conservation major, and Bob Ullsperger is completing credits toward his degree in history.

## Names New Officers

Round Table, the divisional organization for Intermediate-Upper Elementary held its first meeting Monday night, October 12, in the Rural Assembly. Dr. Quincy Doudna gave a talk on the curriculum of the intermediate Division.

The officers for this semester are: President, Wallace Bohrer; vice-president, Carol Holt; secretary, Dick Davis; and treasurer, Mary Ann Raschka. Dr. Doudna is the director for the division and Robert S. Lewis is assistant director. Maynard Raddant was appointed program chairman for the year.

## Weivel To Represent CSC At Conference

Dr. Bernard F. Weivel will represent CSC at the Fourth Annual Midwest College Conservation Education conference that is to be held at the Iowa State college in Cedar Falls, Iowa on October 22 and 23. The states that will be represented at the conference are Wisconsin, Minnesota, Illinois and Iowa.

Dr. Weivel is to be on a panel to discuss effective techniques for teaching conservation in the high schools. He will also present the work being done at CSC for preparation of teachers in Conservation Education.

Other outstanding persons to appear on the same program are Dr. Ira Baldwin, vice-president of the University of Wisconsin, and Dr. E. Laurence Palmer, Emeritus Professor of Conservation Education and Director of the National Wildlife Federation, from Cornell University of Ithaca, New York.

## Faternities and Sororities Hold First Semester Rushing Parties

Tuesday night, October 13, Phi Sigma Epsilon held their rushing party at the Moose Hall. After a hearty spaghetti and meat ball dinner, President Ray Anderson welcomed the guests and introduced members of the fraternity. A film of the Michigan Tech game provided entertainment. General chairman of the party was Everett Moore.

Sigma Phi Epsilon held their rushing party at Norman E. Knutzen's cottage on October 11. President Leroy Purchatzke welcomed the guests and members. Jerry Boettcher spoke on behalf of the fraternity. Guests included Robert T. Anderson, Mr. Knutzen and Raymond E. Specht. Leroy Purchatzke was general chairman of the party. Other committee heads included Ronnie Meyer, location; Ed Wenzel, transportation; Jerry Boettcher, food and Gene Hurst, favors.

The home of Mrs. Charles Cashin was the scene of the Omega Mu Chi rushing party on October 16. With a Halloween theme guests were welcomed through a squeaking door and ushered into the land of goblins and witchcraft by costumed members of the sorority. President Jackie Piehl welcomed the guests and introduced Virginia Cable, alumna, who gave a glimpse of sorority life. The Omega quartet consisting of Pat Giese, Carol Corliss, Jackie Piehl and Barbara Anderson, appeared black faced as they sang "Floating Down to Cotton Town" and "Kentucky Babe."

Carol Corliss served as general chairman of the party. Assisting her were Barbara Anderson, invitations; Pauline Vincent and Judy Clayton, theme and decorations; Sally Rose, food; Sally Serbner, favors; Pat Giese, transportation and Shirley Sonnenberg, clean-up.

Psi Beta Psi used an Indian summer theme for their rushing party on October 11 at the home of Mr. and Mrs. Nels Reppen. Typical autumn markers of gourds, squashes, pumpkins and fall leaves dominated the scene. President Mary Ann Panke welcomed the party. Advisors present were Miss Jessiemae Keyser and Miss Alice Hansen. Other special guests included Mrs. Raymond E. Specht, Mrs. John McComb and Mrs. Herbert Benn, who are patronesses. Mary Ann Panke was general chairman for the party, with the assistance of Janice Thurston, invitations; Vivian Schultz, transportation; Jan Thurston, entertainment; Delores McLees, refreshments; Joanne Untieds, decorations and Mary Walrath, favors.

A back flash into the days of the Gay Nineties was the theme for the Tau Gamma Beta party held on October 18 at the home of Mrs. Marjorie Kerst. Lamps and many other collected memoirs added to the Gay 90's theme. The centerpiece was a floral arrangement of a bicycle built for two. The Barber Shop quartet provided entertainment and Mary Ann Smith and Ruth Ann Charlesworth presented a duet from the seat of a bicycle.

Tri-chairmen for the rushing party were Leona and Charlotte Forth, and Felisa Borja. Other committee heads were: Invitations, Rose Christoffersen; favors, Lynn Olson; decorations, Mary Bartelt and Nadine Bahr; food, Phyllis Rieckfort and Lois Langfeldt; entertainment, Jo Daniel; program, Diane Seif; transportation, Janice Schroeder and clean-up, Grace Collins.

## Series Of Seven Social Hours Planned By WSGA

On November 3, WSGA will begin a series of seven social hours to be held at Delzell Hall. Guests at these gatherings will include junior and senior men and women and members of the faculty.

The purpose of the social hours is purely "social" — an invitation to forget your worries and cares for a few minutes and enjoy a cup of coffee and a bit of conversation with your fellow associates. It is not a "dress up" occasion, merely a bit of social relaxation. When you receive your invitation — do come!

## SHIPPY SHOE STORE

Two Entire Floors Of  
Quality Footwear

## SCRIBNER'S DAIRY

Pasteurized Dairy Products  
Phone 1376

Radios — Jewelry — Music

## JACOBS & RAABE

Tel. 182 111 Water St.

Where Smart Men Shop

## THE CONTINENTAL

## LASKA'S BARBER SHOP

2nd Door from Journal Bldg.  
LEO LASKA ELMER KERST

## WANT ADS

Only Advertising Written  
By friends and neighbors in local levels  
of understanding and believability!

Read The Want Ads in The

## STEVENS POINT DAILY JOURNAL

114 North Third Street  
Phones 2000 — 2001 — 2002

## YOUR PORTRAIT

The Gift That Only  
You Can Give

## TUCKER STUDIO

110 Strongs Avenue  
Phone 407

## Normington's

LAUNDERING  
AND DRY CLEANING

## SERVING PORTAGE COUNTY

SINCE 1883

## FIRST NATIONAL BANK

## LEROY'S DRESS SHOP

See Our Large Selection of COATS, SUITS, and SPORTSWEAR  
Priced To Meet Your Budget  
205 Strongs Avenue Whiting Hotel Building



## WELCOME, ALUMNI

We're glad to have you back for Homecoming to enjoy with us some of the activities that have been planned. You will enjoy the occasion more if you find quite a few of your classmates here, so we hope you have induced some of them to meet you here for the festivities. We're certain you'll see a good football game. It might even be of a conference championship importance. The parade is always fun and there are other enjoyable activities, including the Glee Club concert on Sunday afternoon. You'll see a new college library well along in construction on the campus. So we welcome you back and hope you'll find a lot of old friends here and have a good time.

Wm. C. Hansen, President

## WINTER JACKETS

\$7.95 & Up

## SHIPPY BROS. Clothing

## Joe's Yellowstone

Good Eats At All Times  
One Mile East of Stevens Point

## Pigskin Portraits

### KEN ROLOFF



Roloff

Standing 6'1" and weighing in at 180 lbs. is Sophomore Ken Roloff from down Kaukauna way. Ken is striving for his second CSC gridiron monogram and his fourth all told. Last year Ken won letters in all three of CSC's major sports, namely football, basketball and track. Nineteen years old, Ken does a bang-up job from his end position, doing equally well in the passing, punting, and defensive departments. Scholastically, Ken is pointing toward a history major, is enrolled in Letters and Science.

### JOHNNY SMITH

Sophomore Johnny Smith is 23 years old, stand six feet, even and weighs 180. Although this is his initial year of CSC competition, Johnny already has shown Pointer gridiron fans plenty of spectacular football, especially when he breaks loose with one of his number-



Smith

ous dazzling broken field running jaunts. John earned his Frosh numerals and minor W at the U of Wisconsin before he entered the service as a paratrooper. Holding down a starting berth at both offensive and defensive halfback, Johnny is far ahead of any Pointer ball-carrier in average yards per try and is a potential break-away threat every time he gets his hands on the ball.

### DICK SCHLOEMER



Schloemer

West Bend is the home of Freshman guard Dick Schloemer. Dick is one of the Pointer's unheralded hard-charging linemen, doing alternate duty in Jerry Munderloh's line slot. Dick is 18 years old, scales 185 lbs. and is 5 feet 10 inches tall. Dick earned high school monograms for track as well as for his gridiron prowess. Here at CSC Dick is pointed toward a conservation major in L and S.

### AL DUE

Ex - Clintonville Trucker Al Due is well on his way toward earning his third gridiron letter in as many tries. The past two seasons Al has been the Purple and Gold's specialty man, seeing action only when the Pointers needed the services of his educated PAT toe, but this season he has been experiencing plenty of reserve fallback action on offense as well as defensive line-backing. Big Al is 20 years old, weighs 180 and is 5'11" tall.



Due

### JOE DESORCY



Desorcy

Reserve end Joe Desorcy is 18 years old, stands six foot even and tips the scales at 176 lbs. Joe spent his last three years at St. Norbert's High school, where he picked up six major letters, three in basketball and as many in football. A local Stevens Point product, blond Joe is enrolled here as CSC as a Frosh in L and S. He sees his gridiron action when Mark Schommer needs a rest.

## Pointers Fail To Enjoy Quaker Homecoming 15-12

The Whitewater Quakers made their homecoming a success when they took advantage of two vital scoring opportunities in the fourth quarter and came out on top of a 15-12 hard-fought battle with the Pointers. The Whitewater victory which they gained in an afternoon tilt at Whitewater last Saturday, October 17, stretched their victory streak in homecoming battles to six straight triumphs.



Watson

The Robertsons completely dominated the ball for the first three periods of the contest. The Pointers ran against little resistance in piling up a 12-0 lead at the end of the first half. Midway in the first stanza Point held the Quakers at mid-field to our downs without compiling a first down. Two plays later fleet-footed John Smith sliced off right tackle and eluded several would-be tacklers, then lateraled to Bill Watson, who scampered into paydirt for a 6-0 Point lead. The extra point was wide. The second touchdown came in the early part of the second quarter on a 62 yard march. A Wiemann to Schommer pass had put the Pointers on the Quaker eleven. Two plays later a Wiemann to Watson pass was good to the four but a penalty against the Pointers put them back on the nine. Noonan then swept his own end and into paydirt. The extra point failed when it hit the upright.

The Quakers came to life at the end of the third period when a poor punt by Roloff gave the home team the ball on the Point 24. After an 11 yard loss a dazzling circus catch by half-back Mueller put the ball on the Pointer's four yard-line. Then a youngster, Bob Onstead, dove into the end zone for the first Whitewater TD. The extra point, an important one, was good. The ball exchanged hands several times before the Quakers took over on their 24. Two passes brought the ball down to the Point 22. Whitewater's fourth consecutive pass off of the spread formation was successful when Onstead hauled it in for his second and game winning touchdown with less than a minute to play. The extra point failed, but the damage was inflicted.

A few second later Carl Wiemann was tackled in the end zone while trying to get off a desperate pass before the final whistle blew, giving the Quakers a two-point safety and a hair-raising, homecoming thrill.



Noonan

## WELCOME ALUMS!



BEAT  
POINTERS  
PLATTEVILLE

WORZALLA  
PUBLISHING  
COMPANY

## Berens Barber Shop

Sport Shop Bldg.

"For the Finest Grizz  
in Town See Us"

## H. W. MOESCHLER

South Side

DRY GOODS

SHOES - MEN'S WEAR

## Fred's Paint Store

MAUTZ PAINT

Phone 2295 748 Church St.

South Side

## POINT CAFE

Short Orders Meals

Fountain Service

## HOTEL WHITING

BARBER SHOP

The Shop That Specializes

On College Haircutting

## Frank's Hardware

PHONE 2230

117 North Second St.

## POLLY FROCKS

Headquarters for

Dresses, Skirts &

Blouses

## 65 Service Station

Across From Bus

Depot On Clark Street

General Repair

Pure Oil Products

Wrecker Service

PHONE 682 or 65

For Every Financial  
Service See

## Citizens National Bank

STEVENS POINT, WISCONSIN

Members of F. D. I. C.

## FISHER'S DAIRY

"Better Milk Products

Mean

Better Health"

Lovely Shoes  
For The Coed  
● WEST PORTS  
● RHYTHM STEPS  
● JOLENEES  
● NATURALIZERS

Campbell's

Shopping Center Of  
Stevens Point

Piano, Accordion Lessons

and

Instrument Rentals

all at

## GRAHAM-LANE Music Shop

On the South Side

## terrific flatties

By  
Dream Step



YOU CAN WEAR 'EM  
AROUND THE CLOCK



Foot flatties that  
will make every teen-  
ager's heart beat a  
little faster...

Suedes of Black,  
Blue or Brown

Leathers In

Red

Brown

Black

Benadictine

3.99

Sizes 4 To 10

Widths AA To C

## BIG SHOE STORE

PENNEY'S



## STUDENTS

Warm

COATS

Warm Collars  
Quilted Linings .....\$10.00

Self Trim Collars ..... 8.00

## DELZELL OIL CO.

DISTRIBUTORS OF PHILLIPS "66" PRODUCTS

## THE LARGEST SELLING

COFFEE

IN

STEVENS POINT



THE  
NEW



FOODLINER

OPEN EVENINGS



## Plaster Platteville Is Theme Of Pointers, Vengeance Is Motive Of Homecoming Tilt

The Platteville Pioneers, last year's top team in the now defunct Southern Division, will attempt to spoil Central State's homecoming celebrations and the Pointer's bid for revenge of last year's defeat. The highly publicized tilt will be the climax of the homecoming festivities. Game time will be at two o'clock at Goerke Field.

The Pioneers, coached by Lester "Butch" Leitt, will be out to gain at least a share in the conference title and stretch their 1953 victory string to five games. So far this season they have defeated Whitewater 20-14, University of Dubuque 20-10, Oshkosh 19-7, and Milwaukee 6-0. Platteville concluded the 1952 season with an over-all record of six wins and one loss, including a four-nothing conference record. The Pointers lost a hard-fought 13-0 encounter at Platteville in last year's meeting of the two teams for the league title.

The Robertsmen will be out to avenge last year's defeat and make the CSC homecoming a joyful occasion. The Purple and Gold will be able to gain at least a share of second place if they stop the Pioneers' attack, led by the Zenz brothers, who operate from quarter and full. The Pointers are able to hold their own on the gridiron on both offense and defense and it will take a supreme effort on the part of the visiting Blue and White to overcome them on the scoreboard.

The tilt will be the highlight of the 1953 homecoming festivities and the Pointers, who have not tasted defeat in such a tilt since 1941, will try with all their might to uphold that record. The nearest any opponent has come to overcoming the Purple and Gold was in 1951 when Milwaukee battled to a 13-13 draw. The Robertsmen will attempt to spring back from a 15-12 defeat, at the hands of Whitewater, and use some of the homecoming spirit and fight to stop Platteville's winning streak at 10 games.

Coach Roberts will depend on Carl Wiemann's arm and artful engineering and the superb ball carrying by halfbacks John Smith and Gene Noonan. Al Due is expected to see considerable action at fullback because of Don Herrmann's injured ankle.

Other than Herrmann's injury, the Pointers are expected to be at full strength when they meet the Pioneers.

Senior Mark Schommer, at one end position will lead the probable starting forward wall. Ken Roloff will start at the other end. Bob Wozalla and Jack Crook at the tackles, Ken Hurlbut and Jerry Munderloh at the

guards, and Dave Hurlbut in the center slot. The front line has shown aggressiveness on the defensive as well as spreading the opponents' forward wall to enable the backs to rack up considerable yardage on offense.

All in all everything points toward a rough and tumble battle, and with a good crowd of Pointer fans to urge the CSC players on, Platteville should experience a highly disastrous afternoon.

## Like I Said

by Bob Ullsperger

Just got bumped and bruised in the first issue's predictions, but last week ..... nearly annihilated. That can't happen two times in a row, so here we go again.

Ohio State 20 Wisconsin 14

Ohio State is due to snap out of their recent slump. Too bad it has to be against the Badgers.

Michigan 20 Minnesota 13

That strong Michigan defense will again be responsible for this victory.

Michigan State 27 Purdue 7

The Spartans will continue their victory ways without too much difficulty.

Illinois 20 Syracuse 13

J. C. Caroline will pace the Illini to a victory in this inter-sectional contest with Syracuse.

Northwestern 27 Pittsburgh 20

The Wildcats' passing attack will jell and Pittsburgh will go home with their second loss in the mid-west in two tries.

Marquette 14 College of Pacific 13

We like the Hilltoppers in this one because of their reserve power in the backfield.

La Crosse 20 River Falls 7

La Crosse will face their toughest competition this year, but should capture their fifth straight victory.

Stevens Point 7 Platteville 6

The Pointers, who were surprised by Whitewater last Saturday, will turn right around and do the same to the Pioneers.

Stout 6 Superior 0

Sout, coached by Jack Wink, will gain their first victory of the season in a battle of last place clubs.

Record for the season: 29 out of 42 for a percentage of .690.

IN THE PRO RANKS:

Green Bay 24 Pittsburgh 21  
Los Angeles 31 Chicago Bears 17  
Cleveland 28 New York 10  
Detroit 28 San Francisco 24  
Philadelphia 21 Chicago Cards 10  
Washington 17 Baltimore 14

## Side Lines

by Jerry Baerenwald

Due to an overload of Quakers, it looks as if that long-range limb we crawled out on last week cracked a little this past weekend.

Whitewater may not have had an impressive record going into their homecoming tilt but they surely indicated they had been pitifully underrated, as their winning second-half surge verified. It has to be taken into consideration, of course, that the Quakers were scrapping to uphold a strong tradition in view of their hometown fans. With the unseasonably hot weather rapidly sapping the strength from members of both squads, the Quakers were riding on a wave of sheer school spirit as they drove their way to that final spine-tingling TD and broke the Pointer's back.

Even though the Robertsmen still feel the effects of the jolt they suffered on their season's final journey into enemy territory they are rapidly turning their attentions toward the Pioneers, the only team to hang a pasting on the 1953 CSC squad. Coach Roberts plunged his charges into a heavy scrimmage Monday, ordinarily a day off to rest bumps and bruises, to make sure the team will be in rough and ready shape for Saturday's skirmish.

A special pat on the back goes to reserve fullback Al Due. Al was called upon mid-way in the first quarter of Saturday's game to fill the shoes vacated by the injury-stricken Don Herrmann. Until the last game or two Al has seen little action other than using his educated toe to boot extra points and field goals. He did a commendable job when called upon, however, especially shining when he took his turn at defensive line-backing. With a little push by Lady Luck, Al might have changed the completion of the ballgame as his PAT attempt, after the second Pointer TD, hit the left goal post and almost deflected over the cross-bar. His try for a 23-yard field goal also was close, dropping short by a few feet. A big load will rest on his shoulders this week also, as Herrmann is expected to see only limited action because of a bad recurring sprain in his right ankle.

Let's all show lots of good old Purple and Gold spirit come Saturday afternoon and really go all out to urge our team to a rousing victory. C-mon, you Pointers!

## Eau Claire Tilt To Ring Down Curtain

CSC's fighting gridiron squad will endeavor to haul in another triumph when they unleash their potentialities against the Eau Claire Blue-golds' Saturday afternoon, October 31, at Goerke Field. The contest is the final of the Pointer's 1953 season and will afford Purple and Gold fans a final opportunity to see two brilliant CSC Seniors, end Mark Schommer and fullback Don Herrmann, in action.

Eau Claire, no doubt, will be pointed toward revenge when they tangle with Coach Robert's local charges, being ever reminded of the 33-6 pasting the P and G's hung on them in the season's final contest of 1952. During that particular tussle CSC was able to rack up 187 yards on 21 first downs, all after the Blue-golds had scored first in the opening moments of the game.

This year, however, the Western Wisconsin school has proven itself to be harder to contend with. The Pointers, however, have that cherished home-territory advantage and should be capable of fielding a dazzling array of power in this, the closing gridiron battle of 1953.

The squad, which has played together as a well-drilled team all season long, will be out to wrap up a farewell victory package for two of their last gridiron action as CSC Pointers. Don Herrmann, of Stevens Point, formerly of Minocqua, and Mark Schommer, a Kaukauna product, will bow out after four years under the Purple and Gold banner.

Look out, Blue-golds!!!

## "33" Greats Will Be Here Saturday Too!

Art Thompson, Wauwatosa, and Larry Bishop, Washburn, both members of the great '33 Central State basketball team will be on the campus for Homecoming. Bishop, in fact, will officiate the Homecoming game Saturday afternoon with Platteville. Thompson was captain and ace center on the team, with Bishop playing a cagey forward position on the hardwood, and acting as an all-state end in football.

In case you've never heard the story of that team, here it is. The year was 1933. The Pointer hardwood cagers made a journey to Wisconsin Rapids to play the University of Wisconsin basketball team. No one gave the Point a chance for victory against "Doc" Menzies' university team, but "Eddie" Kotall's cagers did the impossible and defeated Wisconsin, 28 to 24, before 5000 wild-eyed fans. (Rumors have it that Miss May Roach got so excited that she slid right off her bleacher seat and out onto the court.)

The purpose of the game was to see the university team give an exhibition on how to play basketball. The feature attraction was to be the half-time speech by Coach Meanwell on "The Finer Points of Basketball." However, at half-time, Point was so far ahead that he didn't show his face.

Acclaimed as the greatest team to ever represent the school, the players hung up their suits and looked back on a record of eight victories and no defeats. In their scoring, the team averaged a point-a-minute. The University game was the climax of a sensational season.

## VOTE TODAY THE BETTY WAY

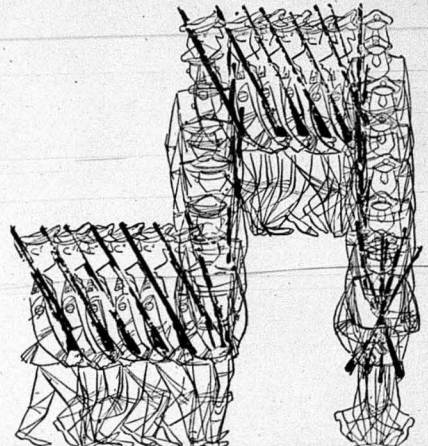
Paid for by Phi Sigma Epsilon

### HETZERS

South Side  
MOBILE GAS and OIL  
Lock and Key Service

### LASKER

JEWELERS  
121 North Third Street Phone 3144  
STEVENS POINT, WISCONSIN  
Ask her, then see Lasker



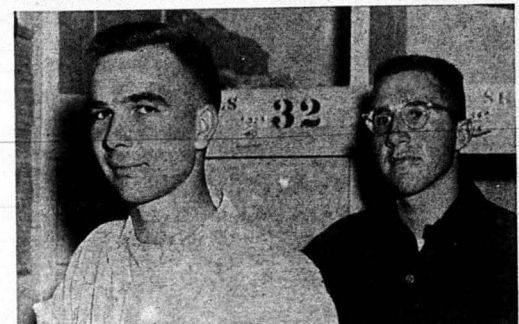
When you pause...make it count...have a Coke



BOTTLED UNDER AUTHORITY OF THE COCA-COLA COMPANY BY  
LA SALLE COCA-COLA BOTTLING COMPANY

"Coke" is a registered trade-mark.

© 1953, THE COCA-COLA COMPANY



Team managers — Jerry Baerenwald and Dan Misner

## More Pep As Six New Cheerleaders Shine

More spice and vigor were added to CSC's cheering section last Wednesday, October 14, when six more cheerleaders were chosen. The 16 girls who tried out were judged by Coaches Hale Quandt and John E. Roberts, Miss Tessie Mae Keyser and the four present cheerleaders, Pauline Vincent, Doris Moss, Eileen Schieb and Marge Smith.

The six chosen were: Jo Anne Broetzman of Gillett; Pae Ellinger, Oxford; Lois Nelson, Stevens Point; Marie Doro, Wauapaca; Lois Peters, Clintonville; and Erna Demuth, Wild Rose. Some of these girls will be alternates and others will join the regulars.

## CSC Keglers Off On Timber Topping Way

TEAM	W	L
Miller-High Life	3	0
Pepsi Cola	3	0
College Eat Shop	2	1
Vetters	2	1
Sig Eps	1	2
Phi Sigs	1	2
Essex's	0	3
AKL	0	3

## MAIN STREET CAFE

Specializes In Home  
Cooking and Baking

24 Hour Service 411. Main

## CARROLL'S

MUSIC SHOP

Your Record Headquarters

## SPORT SHOP

SCHOOL SWEATERS

\$8.95

SWEAT SHIRTS

\$1.45

## PETERSON OIL CO.

726 Church St.  
STEVENS POINT

Tel. 1315

# Homecoming - 1953



Roloff



Wieman



Noonan



Herrmann



Smith



Schommer



Munderloh



K. Hurlbut



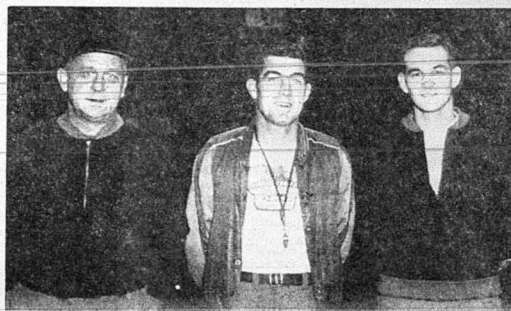
D. Hurlbut



Crook



Worzalla



Coaching Staff — Hale F. Quandt, John E. Roberts  
and Curt Taylor.

P  
L  
A  
S  
T  
E  
R  
  
P  
L  
A  
T  
T  
E  
V  
I  
L  
L  
E

A  
R  
F  
A  
R  
F  
P  
O  
I  
N  
T  
E  
R  
S



The 1953 Pointer football squad

THIS PAGE MADE POSSIBLE BY THE FOLLOWING FIRMS

Walter's Floral Shop  
East Side Texaco  
Erv's Pure Oil  
Campus Cafe

College Eat Shop  
Emmon's Stationery & Supply  
Bowlby's Candies  
Congress Cafe  
Stevens Point Beverage Co.

Portage County Pure Oil Co.  
Church's Plumbing  
Hardware Mutuals  
Don Warner Studio