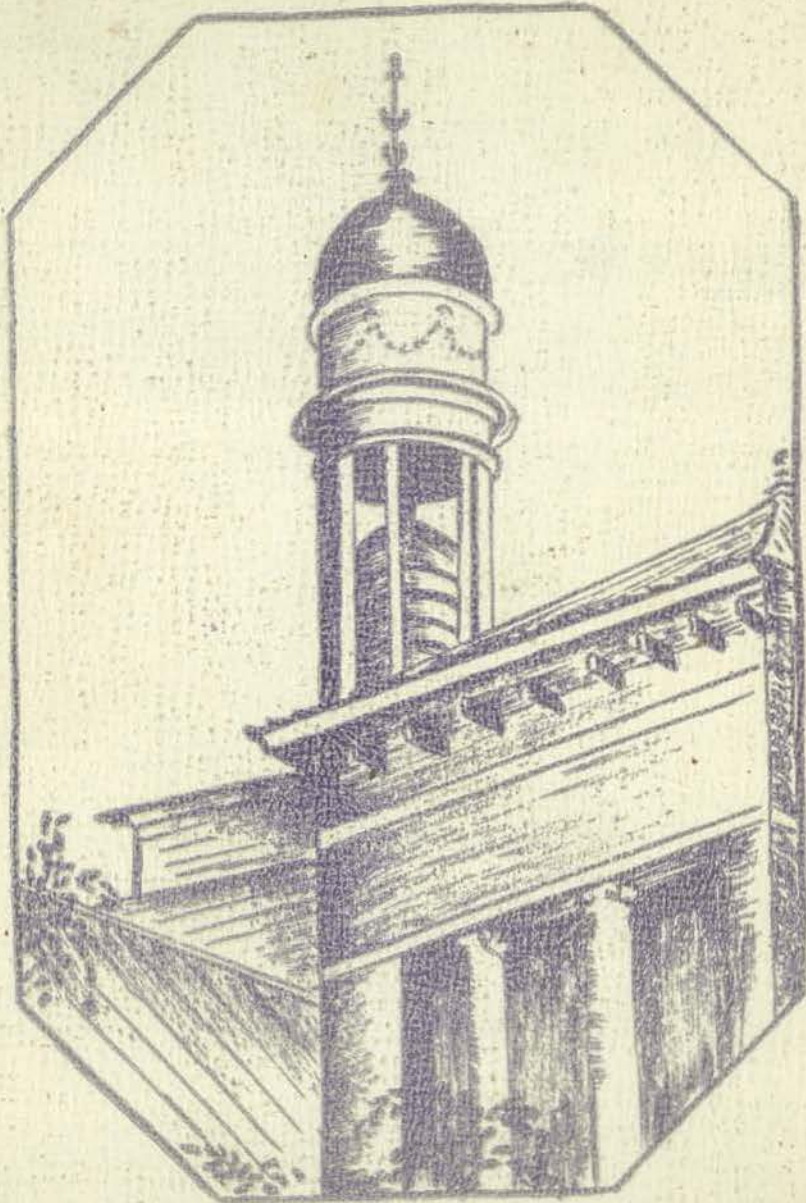


IRIS



1945



The



Album

Recorded by:
the Junior Class
Central State
Teachers College
Stevens Point, Wis.

Jane Miller, Editor-In-Chief
Kathryn Kenney, Business Manager



Foreword

Here it is—your Iris Album! It has been the wish of the staff of the 1945 Iris to liken this yearbook to an album of your treasured music. You will open these covers frequently now because the Iris Album is something new. As the years go by, we hope that you will take this album from the shelf. Dust it off and see within it the year 1944-45 that you spent at Central State Teachers College, and recollections of the year 1943-44 when there was no Iris published. In this year you will find the school-song, the war-song, the dream-song, and the song of home. The pep-song and the dancing-song may be missing but those are the things for which we may look in the years ahead.

Making your 1945 Iris has not been all fun, any more than going to college when our nation is at war is all fun. We came in an inexperienced staff willing to try to do our best. We learned many of the tricks the hard way. If we were to have pictures it meant we must have supplies. If we were to have supplies it meant we must have the approval of the O.P.A. We finally got them both. We are glad that we could give you the Iris in a year when so many things were difficult. It is no longer our worry. It is your Iris Album. Take it, and within its pages may you find happy memories of this year at C.S.T.C.

Album Contents

Pomp and Circumstance 9
(Administration)

Practice Makes Perfect 21
(Classes)

Playmates 43
(Activities)

Honor Roll

World War II

We, the teachers and future teachers of America, pledge ourselves to the principles for which these former students of CSTC have given their lives.

Eugene Brill

Willard Roth

Lyle Brunner

Richard Roberts

George Cashin

Alvin Sell

Rolland Cossette

Leonard Scheel

Kent Cutnaw

James Scribner

Ed Durand

Gordon Steinfest

Joe Goodrich

Rene Stimart

William Lowecke

Howard Stimm

Leonard Matkey

Duncan Seffern

Ignatius Mish

Douglas Strope

Duane Phaneuf

Tom Winkler

Donald Powers



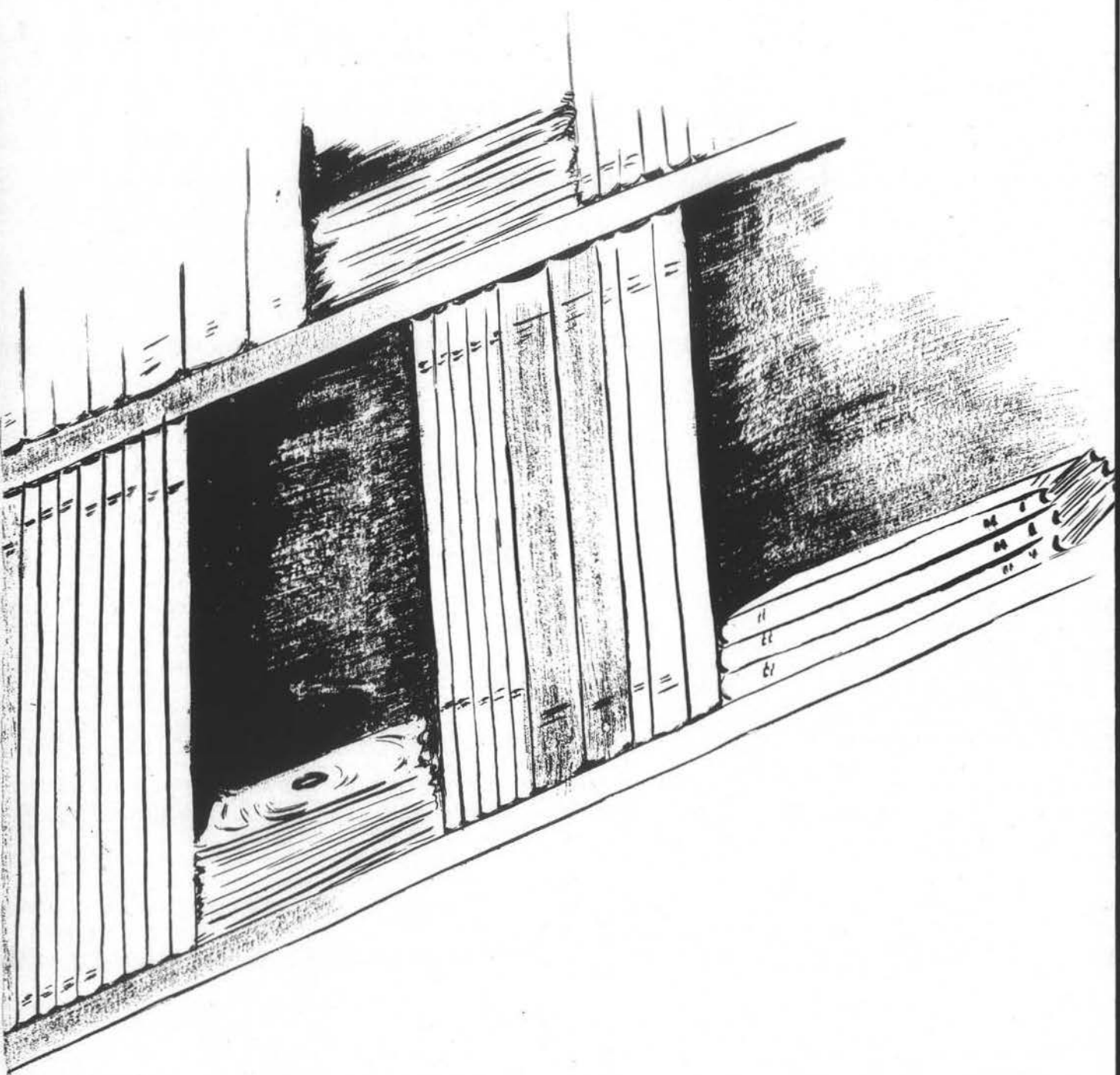
Dedication

This year marks the first time in almost three decades that Oscar W. Neale has not been a member of our faculty. His smiling face and his cheery greeting, "How are you, Professor?" are missed by everyone.

When Mr. Neale announced his retirement at CSTC's golden anniversary banquet in June, 1944, the faculty, the assembled alumni, and the entire student body felt that they had received a personal loss. Mr. Neale had become so thoroughly a part of CSTC that it was difficult to imagine college life without him. In September, returning students felt strange without his welcoming handshake.

Mr. Neale's natural friendliness and willing helpfulness have endeared him to everyone. His spontaneous enthusiasm, his wide experience, and his great knowledge have made him a fine teacher, while his ready sympathy and unswerving loyalty have made him the perfect friend.

CSTC wishes Mr. Neale all good fortune in whatever future tasks he undertakes. In the twenty-nine years he has been with us he has unceasingly given us of himself. In dedicating the 1944-45 IRIS to him we are trying to say: "Thank you, and may God bless you."



Pomp

And

Circumstance



President

Whether met in the hall or visited in his office, President William C. Hansen always has a smile and a personal greeting for everyone. Since 1940, when he first took office, he has worked untiringly for the advancement of the college and for the progress of education as a whole.

A graduate of Central State Teachers College in 1911, President Hansen is familiar with every phase of college life, and is acutely aware of any wave of feeling among CSTC's students. His impartial and carefully considered decisions have won for him the whole-hearted respect of both students and faculty.

Except when President Hansen is in conference, the door of his office stands open—a symbol of the free and friendly relationship which exists between him and the rest of the college.

Regent

Central State Teachers College is fortunate in having Wilson S. Delzell as its regent. He has proven his deep interest in the progress of the school by the time he has willingly given to its numerous activities and the constant cooperation he has shown. The assistance which Mr. Delzell has given the college is deeply appreciated by the faculty and the student body.

His experiences as a former teacher and supervising principal give him an added understanding of the educational program.

Regent Delzell was recently reappointed to the Board of Normal School Regents for a term expiring in 1950.



Our Deans

Dean Pfiffner's office is one of the most popular spots in CSTC. The girls of Central State have found that Mrs. Elizabeth Pfiffner, Dean of Women, is the person to whom they naturally turn when they need help or advice — or when they just feel like "talking".

One of the things which most endears Mrs. Pfiffner to the students is the personal contacts which she maintains with them. She has a genuine interest in all of them, an interest which is reflected in her friendly manner.

In supervising matters which pertain to student life, Dean Pfiffner makes every effort to maintain high standards for the students of CSTC.

Herbert R. Steiner, head of the history department at CSTC, is also Dean of Men. He has been teaching at Central State since 1918, and his popularity with both the students and faculty has continued to grow with each succeeding year.

Perhaps one reason for his un-failing ability to see the student's viewpoint here is the fact that he, like Dean Pfiffner, attended CSTC himself.

Anyone who is fortunate enough to be enrolled in one of Mr. Steiner's history classes has before him a very enjoyable experience. Dean Steiner's droll humor and witty presentation of the "human-angle" make his lectures doubly interesting.

As dean, teacher, and friend he is unsurpassed.





BESSIE MAY ALLEN **Home Economics**
 Graduate, Iowa State Teachers College;
 B.S., M.A., Columbia University. At Stevens
 Point since 1913.



HAZEL BENTSON . **Training School Supervisor**
 Graduate, Eau Claire State Teachers Col-
 lege; B.A., Lawrence College; M.A., Uni-
 versity of Wisconsin. At Stevens Point
 since 1941. (Now on military leave)



GEORGE R. BERG
Athletic Director, Physical Education
 B.S., M.S., University of Wisconsin. At
 Stevens Point since 1942.



LELAND M. BURROUGHS **English, Speech**
 A.B., Wabash College; Graduate King's
 College of Oratory, Pittsburgh; M.A., Uni-
 versity of Michigan. At Stevens Point since
 1920.



EDNA CARLSTEN **Art**
 Three-year Normal Art Course, Chicago
 Art Institute; B.A.E., Art Institute. At
 Stevens Point since 1923.



SUSAN E. COLMAN
Director of Primary Education
 Graduate, Superior State Normal School;
 Ph.B., Ph.M., University of Wisconsin. At
 Stevens Point since 1931.



EDITH P. CUTNAW
Training School Supervisor
 Graduate, Oshkosh State Normal School;
 Ph.B., Ripon College; Ph.M., University of
 Wisconsin. At Stevens Point since 1939.



MILDRED DAVIS **Foreign Languages**
 A.B., M.A., State University of Iowa. At
 Stevens Point since 1928.

CS7C Faculty

CS7C Faculty



LEAH L. DIEHL . . . Training School Supervisor
 Graduate, Milwaukee State Normal School;
 Ph.B., M.A., University of Chicago. At
 Stevens Point since 1923.

CHARLES C. EVANS Biological Science
 B.S., Ohio Wesleyan University; M.S.,
 University of Chicago. At Stevens Point
 since 1920.



GILBERT W. FAUST Chemistry
 B.S., M.S., University of Wisconsin. At
 Stevens Point since 1935. (Now on military
 leave)

BERTHA GLENNON English
 Graduate, Stevens Point State Normal
 School; A.B., M.A., University of Wisconsin.
 At Stevens Point since 1940.



RUBY M. GREILING Physical Education
 B.E., La Crosse State Teachers College;
 B.A., Ripon College; M.S., University of
 Southern California. At Stevens Point since
 1941. (Now on military leave)

GERTIE L. HANSON Geography, Radio
 Graduate, La Crosse State Normal School;
 Ph.B., Ph.M., University of Wisconsin. At
 Stevens Point since 1920.



ALBERT E. HARRIS
Psychology, Philosophy, and Education
 B.E., La Crosse State Teachers College;
 Ph.M., University of Wisconsin. At Stevens
 Point since 1941. (Now on leave)

ALFRED J. HERRICK
Principal, Training School
 Graduate, Stevens Point State Normal
 School; Ph.B., University of Wisconsin. At
 Stevens Point since 1912.



CS7C Faculty

CS7C Faculty



WARREN G. JENKINS **History**
 A.B., Miami University; M.A., Ph.D., University of Wisconsin. At Stevens Point since 1934.



NELIS R. KAMPENGA **Librarian**
 A.B., University of Michigan; A.M.L.S., University of Michigan. At Stevens Point since 1941.



NORMAN E. KNUTZEN **English**
 Graduate, Stevens Point State Normal School; A.B., M.A., Lawrence College. At Stevens Point since 1931.



BESSIE LAVIGNE **Rural Supervisor**
 Graduate, Stevens Point State Normal School; B.S., University of Minnesota. At Stevens Point since 1924.



ROBERT S. LEWIS . **Training School Supervisor**
 B.A., B.S., M.A., University of Wisconsin. At Stevens Point since 1942.



ARTHUR S. LYNES
Registrar, Biological Science
 B.S., Kansas State Teachers College; M.S., Ph.D., University of Iowa. At Stevens Point since 1934.



SYBLE MASON **Assistant Librarian**
 B.E., Central State Teachers College; Diploma, University of Wisconsin Library School. At Stevens Point since 1930.



HELEN MESTON **Home Economics**
 B.S., Doane College; B.S., M.A., Columbia University. At Stevens Point since 1920.

CSTC Faculty

CSTC Faculty



PETER J. MICHELSEN **Director of Music**
 Graduate of the Seminary, the Military School of Music, and the Music Conservatory of Oslo, Norway; graduate of the Vander-Cook School of Music, Chicago. At Stevens Point since 1931.



JOSEPH MOTT **Education**
 B.S., State Teachers College, Kirksville, Missouri. At Stevens Point since 1923.



O. FLOYD NIXON **Mathematics**
 A.B., Indiana University; M.A., University of Chicago; Ph.D., Ohio State University. At Stevens Point since 1937.



LYDIA M. PFEIFFER
Training School Supervisor
 Graduate, Oshkosh State Normal School; Ph.B., University of Wisconsin; M.A., Columbia University. At Stevens Point since 1927.



ELIZABETH PFIFFNER
Dean of Women, History
 Graduate, Stevens Point Normal School; B.E., Central State Teachers College; Ph.M., University of Wisconsin. At Stevens Point since 1940.



BURTON R. PIERCE
Training School Supervisor
 Graduate, Stevens Point Normal School; Ph.B., Ripon College; M.A., University of Iowa. At Stevens Point since 1923.



EDGAR F. PIERSON **Biological Science**
 B.S., Iowa Wesleyan College; M.S., Ph.D., University of Iowa. At Stevens Point since 1938. (Now on military leave)



NELS O. REPPEN **Social Science**
 A.B., M.A., Ph.D., University of Wisconsin. At Stevens Point since 1932.

CS7C Faculty

CS7C Faculty



RAYMOND M. RIGHTSELL
 Director of Secondary Education, Physics
 A.B., Indiana State Normal College; M.A.,
 University of Cincinnati. At Stevens Point
 since 1920.



MARGARET RITCHIE Assistant Librarian
 B.A., Carleton College; B.S., University of
 Illinois Library School.



MAY M. ROACH
 Acting Director of Rural Education
 Graduate, Stevens Point Normal School;
 B.S., University of Minnesota. At Stevens
 Point since 1914.



MARY S. SAMTER Training School Supervisor
 Graduate, Stevens Point Normal School;
 B.E., Western Illinois State Teachers Col-
 lege; M.A., University of Iowa. At Stevens
 Point since 1943.



FRED J. SCHMEECKLE . Agriculture, Chemistry
 A.B., State Teachers College, Kearney,
 Nebraska; M.S., University of Minnesota.
 At Stevens Point since 1923.



MYRTLE S. SPANDE Physical Education
 B.A., St. Olaf College; M.S. University of
 Wisconsin. At Stevens Point since 1943.



HERBERT R. STEINER ... Dean of Men, History
 Graduate, Stevens Point Normal School;
 Ph.B., Ph.M., University of Wisconsin. At
 Stevens Point since 1918.



VICTOR E. THOMPSON Industrial Arts
 Graduate, Stout Institute; Ph.B., Ph.M.,
 University of Wisconsin. At Stevens Point
 since 1918.

CSTC Faculty

CSTC Faculty



HAROLD M. TOLO **History**
 A.B., Luther College; M.A., University of
 Minnesota; Ph.D., University of Illinois. At
 Stevens Point since 1936.



GLADYS VAN ARSDALE
Training School Supervisor
 A.B., Iowa State Teachers College; M.A.,
 Columbia University. At Stevens Point
 since 1934.



CHARLES F. WATSON ... **Director of Inter-
 mediate Grade and Junior High School Education**
 Graduate, Platteville State Normal School;
 B.S., M.S., University of Chicago. At Stev-
 ens Point since 1913.



MILDREDE WILLIAMS
Training School Supervisor
 B.A., Iowa State Teachers College; M.A.,
 Columbia University. At Stevens Point
 since 1940.



EMILY WILSON **Home Economics**
 B.S., Kansas State Teachers College; Ph.B.,
 University of Chicago; M.S., Kansas State
 College. At Stevens Point since 1921.



ROSE BARBER
Director of Nelson Hall



CAROLYN G. ROLFSON
Financial Secretary



MARIE SWALLOW
Training School Secretary

CS7C Faculty

CS7C Faculty



ARLA BENDER
Secretary, Record Office



ANTOINETTE FRIDAY
Office Secretary



In order to maintain a high standard of health, CSTC features a regular student health service under the direction of Nurse Mary Neuberger and Dr. Fred A. Marrs. Both have been at the college since 1935.

The health service helps to a great extent in conserving the health of the student body. The aim is to prevent sickness by giving attention to minor complaints before they become serious. Consultations at the center are available during regular office hours.

Free hospitalization for a limited period is provided for any student.



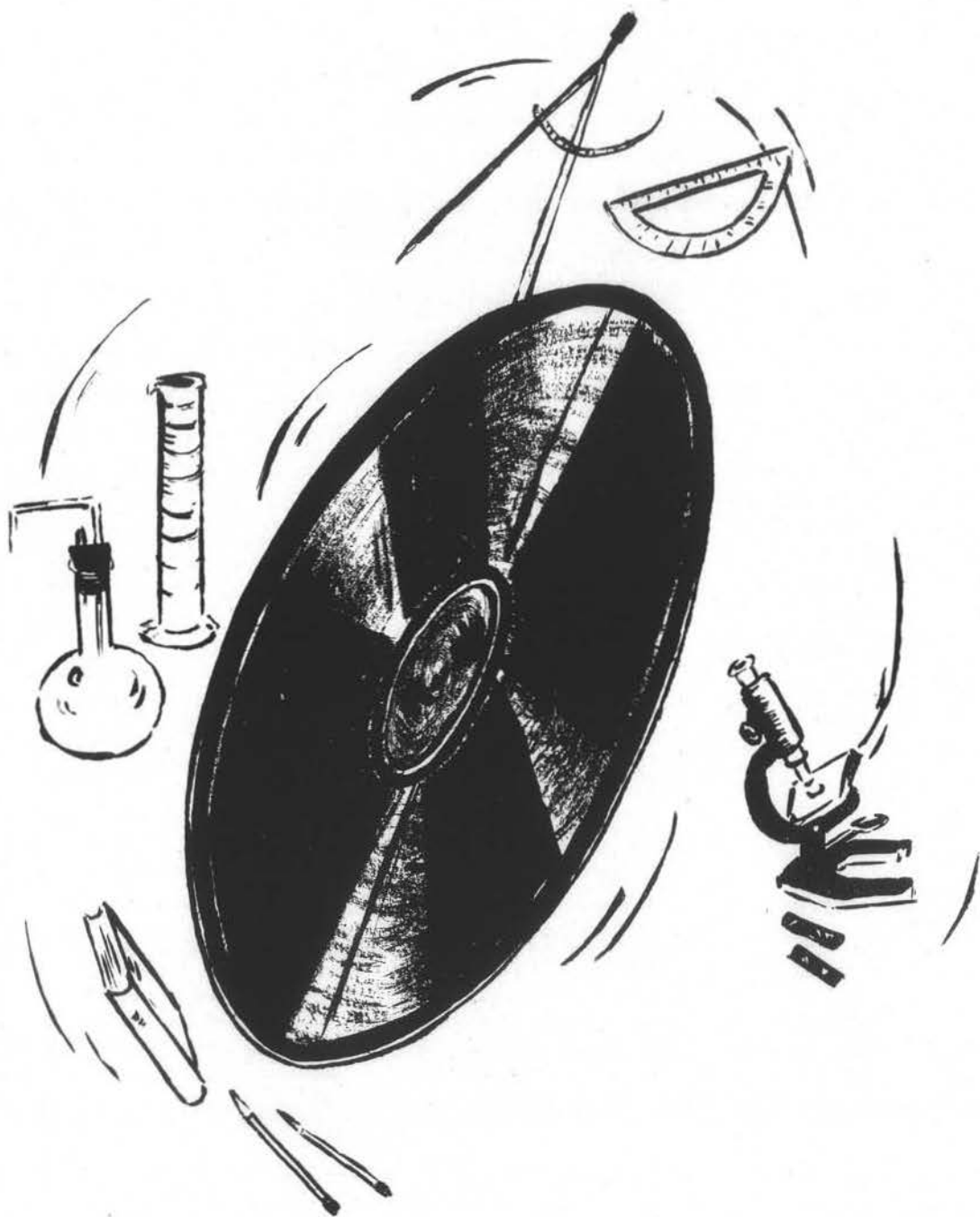
In Memoriam

During the school year 1943-44, students and faculty at CSTC lost a true friend through the death of Thomas A. Rogers. Mr. Rogers was head of the chemistry department, a position he had filled since 1923. All who knew him will remember his cheery smile and friendly greeting.

He was a kind and understanding teacher with an almost inexhaustible amount of patience. He was interested in the students and liked to chat with them. No matter what a student's problem was, help and encouragement could always be found if a student talked things over with Mr. Rogers. He was a man who was interested in the little things as well as the big things. He was always ready to listen and liked to have students come in just "to talk". His laugh was just as hearty when the joke was on him as when he was teasing someone else.

Mr. Rogers was active in many things at CSTC. He was instrumental in getting the local Science club affiliated with the National Sigma Zeta society and was active in this organization until his death. Mr. Rogers took an active part on the committee which raised funds for the establishment of the Culver memorial library as a memorial to his predecessor in the chemistry department. He was chairman of the college social committee and in this capacity always had the students' interests at heart. For many years he was faculty adviser of the Iris. Besides his school activities, he was active in many civic organizations and in his church and Sunday school.

We at CSTC miss Mr. Rogers. His was indeed a life well and fully lived.



Practice

Makes

Perfect

The Class of 1945

President, EDYTHE OFSTUN. . . . blonde. . . . Norwegian and proud of it. . . . capable of handling all the buttons in the radio studios. . . . in love with teaching English. . . . going to New Holstein next fall. . . .

Vice-President, ROGER McCALLUM. . . . called "Rog". . . . the ambitious type who likes crossword puzzles. . . . idolized by his students. . . . always laughing. . . . going to Manawa to teach next year. . . .

Secretary, FLORENCE FLUGAUR. . . . ambitious plus. . . . always writing. . . . deserving of roses for a year of swell Pointers. . . . active in Newman Club. . . . capable of having a story published in a Chicago paper. . . . going to New London to teach the little tots. . . .

Treasurer, BETTY POHLMAN. . . . little. . . . stopped by no one. . . . in love with Norm. . . . capable of turning out a poster at a minute's notice. . . . planning on many weekends in Point next year. . . . going to teach in Pittsville high. . . .

When the school year 1944-1945 began, there were 223 students enrolled, 117 of whom were in the Freshman class. Thirty-eight men enrolled. This was the lowest student enrollment for many years and was a direct result of the war. Starting the school year off with a bang, the Stevens Point Chamber of Commerce distributed packets of CSTC stationery and tickets to "Going My Way" to all students and faculty.

Several basketball games were scheduled and some of these were played before the team was forced to dissolve in January because its members enlisted in the Navy. A Men's Glee club was also started and had several successful meetings before its members, too, were called to service.

Oscar W. Neale, for 29 years head of the Rural Department at the college, retired at the end of the 1944 summer session. Miss May Roach has served as acting director for this school year. Fred J. Schmeekle became head of the chemistry department. Dr. Clarence Jayne of the Training School faculty, and Robert Morrison, college history instructor on leave for military service, both resigned their positions here. Miss Margaret Ritchie came to CSTC as the new assistant librarian.

Merve and Irene Masten sold the Eat Shop, and Andy and Eva Payzer became the new owners.

The wife of General Mark Clark spoke on the subject, "A General's Wife Looks at the War", at the Talk of the Hour club in December.

Doctor Harold Tolo's history classes chose as the "Man of the Year" General Dwight D. Eisenhower, and then felt pretty smart when Time magazine followed their lead and named him, too.

In February there was the all-school valentine party in the "Hall of Hearts" with the queen and knave of hearts reigning over it. And, speaking of parties, the "Little Red Schoolhouse" party, given by the Rural Life club in April, was definitely the hit of the year.

The college purchased a service flag on which are 930 blue stars for CSTC students now in the armed forces, and 23 gold stars for former students who lost their lives in the war.



**BREGGER
CONNOR**

**BREHM
DAVIDS**

**BRESKE
DUNN**

**BROOKS
FLUGAUR**

**BUCHHOLZ
GLENZER**

JACKIE BREGGER—Stevens Point; Major: Primary Education; Primary Council, 2,3,4; W.A.A. 1; Newman Club, 1,2,3,4, Treasurer, 4; College Theater, 3; Radio Workshop, 4.

MINNIE MAE BREHM—Colby; Major: Geography; Minors: History, General Science; W.A.A., 1,2; Rural Life Club, 1,2; Y.W.C.A., 1,2; Grammar Round Table, 3,4.

ALICE BRESKE—Wausau; Major: Primary Education; Minor: English; Newman Club, 1,2, 3,4; Primary Council, 2,3,4, President, 4; Sigma Tau Delta, 3,4, Press Representative, 4; Glee Club, 3; Assistant Student Director of Nelson Hall, 4.

BETTY BROOKS—Crystal Falls, Mich.; Major: Primary Education; Primary Council, 1,2,3,4; Omega Mu Chi, 1,2,3,4, Chaplain, 2; Glee Club, 1,2,3,4.

HILDA BUCHHOLZ—Westfield; Major: Home Economics; Minors: Biology, History; Home Economics Club, 1,2,3,4; Forum, 2,3,4; Sigma Zeta, 4; Gamma Delta, 1,2,4.

JOYCE CONNOR—Auburndale; Major: Biology; Minors: History, English; Y.W.C.A., 2,3,4; Forum, 2,3,4; Omega Mu Chi, 1,2,3,4; W.A.A. 1.

DOROTHY DAVIDS—Bowler; Major: Intermediate Education; Gamma Delta, 1,2,3,4, President, 2, Treasurer, 3; Tau Gamma Beta, 1,2, 3,4, Recording Secretary, 2, Treasurer, 3,4; W.A.A., 1; Glee Club, 2,3,4; Grammar Round Table, 2,3,4, Vice President, 4; Iris, 2; Y.W.C.A., 4; Sigma Tau Delta, 4; Pointer, 4; Dorm Council, 2; Class Treasurer, 1, Vice-President, 3.

LUCILLE DUNN—Oxford; Major: Primary Education; Primary Council, 2,3,4, Board Member, 4; Y.W.C.A., 4; Radio Workshop, 3,4; Student Council, 4.

FLORENCE FLUGAUR—Stevens Point; Majors: Primary Education, English; Minor: History; Newman Club, 1,2,3,4, President, 3; Pointer, 2,3,4, Editor-in-Chief, 4; Primary Council, 2,3, 4; Student Council, 3, Vice-President, 3; Iris, 2,4; Sigma Tau Delta, 3,4, Secretary, 4.

JEANIE CATTANACH GLENZER—Owen; Major: Primary Education; Glee Club, 1; Class Treasurer, 3; Tau Gamma Beta, 1,2,3,4, Vice-President, 3, Chaplain, 4; Y.W.C.A., 1,2,3,4; Primary Council, 1,2,3,4; W.A.A., 1,2; Student Council, 4.

1945 Degree Graduates 1945



**GOOD
HOWES**

**GROSSMAN
A. JOHNSON**

**HALAMA
G. JOHNSON**

**HEIKE
M. JOHNSON**

**HOTVEDT
JOOSTEN**

JANET GOOD—Green Lake; Major: English; Minors: History, Biology; Glee Club, 1,2,3,4; Radio Workshop, 1,2; Y.W.C.A., 1,2,3,4; Sigma Tau Delta, 3,4, Historian, 4; Forum, 2,3,4; Pointer, 4; Nelson Hall Press Representative, 4.

MARION GROSSMAN—Deerfield; Majors: Intermediate Education, Geography; Minor: History; Glee Club, 1,2; Grammar Round Table, 1,2,3,4, President, 4; Student Council, 4; College Y, 1,2,3, Librarian, 3; Y.W.C.A., 1,2,3,4, Vice-President, 3; Gamma Delta, 1,2,3,4, President, 3, Treasurer, 4; Pointer, 4.

MARTHA HALAMA—Independence; Major: Home Economics; Minors: Biology, General Science; Home Economics Club, 1,2,3,4; Newman Club, 1,2,3,4; Forum, 2,3,4.

GERTRUDE HEIKE—Shawano; Major: Home Economics; Minors: Biology, English, General Science; Home Economics Club, 1,2,3,4, Treasurer, 3, President, 4; Omega Mu Chi, 3,4; Forum, 2,3,4; Gamma Delta, 1,2,3,4; Glee Club, 2,3; College Theater, 3,4; Sigma Tau Delta, 4; Pointer, 4.

MARY ANN HOTVEDT—Nelsonville; Major: Mathematics; Minors: Physics, History; Rural Life Club, 1; Forum, 2,3,4; Glee Club Accompanist, 3; Pointer Business Manager, 4; Sigma Zeta, 3,4, Vice-President, 4; Alpha Kappa Rho, 3,4, Treasurer, 3.

ROSE MARIE HOWES—Spirit Falls; Major: Primary Education; W.A.A., 1,2; Pointer, 1,2,3; Omega Mu Chi, 2,3,4, Press Representative, 4; Student Council 3,4, Secretary, 3, Vice President, 4, Chairman of War Bond Drive, 4; Glee Club, 1,2,3,4; Primary Council, 1,2,3,4, Board Member, 4; Iris, 4; Dorm Freshman Representative, 1.

ALICE L. JOHNSON—Marinette; Major: Four Year State Graded; Rural Life Club, 4; W.A.A., 3,4, Secretary and Treasurer, 4; College Y, 3, Secretary, 3; Y.W.C.A., 3,4, Secretary, 4; Primary Council, 3; L.S.A., 3,4, President, 4.

GLENNA JOHNSON—Milwaukee; Major: Home Economics; Minors: Biology, General Science; Home Economics Club, 1,2,3,4; Forum, 2,3,4; Iris Art Editor, 4.

MARGARET JOHNSON—Blair; Major: Home Economics; Minors: English, General Science, Biology; Pointer, 2; Tau Gamma Beta, 1,2,3, Press Representative, 3; Student Council, 2,3; Home Economics Club, 1,2,3; L.S.A., 2; Class Treasurer, 2; Forum, 2,3.

JOAN JOOSTEN—Rudolph; Major: Primary Education; Primary Council, 2,3,4, Treasurer, 3; Band, 1,2,3; Glee Club, 1,2,3,4, Vice-President, 3, Secretary, 4; Student Council, 3; Tau Gamma Beta, 2,3,4, Secretary, 2, President, 3, Pan-Hell Representative, 4; Alpha Kappa Rho, 3,4, Secretary, 4; Orchestra, 2,3; Newman Club, 1.

1945 Degree Graduates 1945



**KENNEY
McCALLUM**

**LA BARGE
MORK**

**LLOYD
NIVEN**

**LUDWIG
OFSTUN**

**LUNDGREN
POHLMAN**

KATHRYN KENNEY—Marshfield; Major: American History; Minors: English, Biology; Pointer, 2; Forum, 2,3,4, Vice-President, 4; Iris Business Manager, 4; Omega Mu Chi, 1,2,3,4, Treasurer, 3, President, 4; Class Secretary, 2; Social Science Club, 3,4.

RAYMOND LA BARGE—Stevens Point; Majors: Mathematics, General Science; Minor: History; Forum, 2,3,4; College Y, 3; Newman Club, 1,4.

ARLENE LLOYD—Land O'Lakes; Major: History; Minors: English, Social Science; Y.W.C.A., 1,2,3,4; Forum, 1,2,3,4; Gamma Delta, 2,3,4, Vice-President, 3; Glee Club, 1,2,3,4.

IRENE LUDWIG—Stevens Point; Major: History; Minors: English, Geography; Gamma Delta, 1,2,3,4, Secretary, 2, President, 4; Glee Club, 1,2,3,4, Business Manager, 4; Pointer Assistant Business Manager, 4; Sigma Tau Delta, 3,4, President, 4; Alpha Kappa Rho, 3,4, Vice-President, 3, President, 4; Forum, 2,3,4; Mixed Chorus, 2.

HELEN LUNDGREN—Amherst; Major: Home Economics, Minors: History, Biology; W.A.A., 1,2; Forum, 2,3,4; Home Economics Club, 1,2,3,4; L.S.A., 1,2,3; Tau Gamma Beta, 2,3,4, Press Representative, 3; Student Council, 2,3; Class Secretary, 3.

ROGER McCALLUM—Elroy; Major: Biology; Minors: Geography, Music; Alpha Kappa Rho, 2,3,4, Vice-President, 3, President, 3; College Theater, 2,3,4, Stage Manager, 3,4; Band, 1,2,3,4, President, 3; Orchestra, 1,2,3,4; Sigma Tau Delta, 4; Forum, 2,3,4.

IRENE MORK—Suring; Major: Four Year State Graded; Transferred from Marinette County Normal, 3; Rural Life Club, 3,4, Vice-President, 4; Student Council, 4; Tau Gamma Beta, 3,4; W.A.A., 3,4, Treasurer, 4; College Y, 3; Wesley Foundation, 4, Co-Program Chairman, 4.

ALTA NIVEN—Amherst; Major: Intermediate Education; Minor: History; Band, 1,2,3,4; Y.W.C.A., 1,2,3,4, Council Member, 4; Grammar Round Table, 1,2,3,4, Secretary, 4; Nelson Hall Council, 4.

EDYTHE OFSTUN—Soldiers Grove; Major: English; Minors: History, Geography; Omega Mu Chi, 1,2,3,4, Treasurer, 4, Vice-President, 4; Sigma Tau Delta, 3,4, Treasurer, 4; Pointer, 3,4; Class President, 4; College Theater, 3,4, Secretary, 4; College Y, 3; Forum, 2,3,4; Radio Workshop, 1,2,3,4; Iris, 4; L.S.A., 1,2,3,4.

BETTY POHLMAN—Milwaukee; Major: American History; Minors: Social Science, Mathematics; Omega Mu Chi, 1,2,3,4, Historian, 4; College Theater, 3,4; Student Council, 3,4, President, 4; Iris, 4; Forum, 2,3,4; Class Treasurer, 4; Debate, 2.

1945 Degree Graduates 1945



**PRIEM
A. SHORT**

**RONDEAU
D. SHORT**

**PETERSON
SPYCHALLA**

**SACKETT
THEISEN**

**SEMANKO
TOBIAS**

AUDREY PRIEM—Lily; Major: Primary Education; Gamma Delta, 1,2; Omega Mu Chi, 2,3,4, Vice-President, 4, Pan-Hell. Representative, 3; Glee Club, 1,2,3,4; Primary Council, 1,2,3,4.

DOLORES RONDEAU—Mosinee; Major: Home Economics; Minors: Biology, English, General Science; Glee Club, 1,2,3,4; Mixed Chorus, 1,2; Newman Club, 1,2; Tau Gamma Beta, 2,3,4, Historian, 3, Corresponding Secretary, 4; Alpha Kappa Rho, 3,4, Treasurer, 4; Home Economics Club, 1,2,3,4, Secretary, 4; Forum, 2,3,4; Nelson Hall Vice-President, 4.

BERNADINE PETERSON—Neillsville; Major: Home Economics; Minors: English, Biology, General Science; Home Economics Club, 1,2,3,4, Press Representative, 3,4; Forum, 2,3, 4; Sigma Zeta, 3,4, President, 4; Sigma Tau Delta, 4; Iris, 2,4; Pointer, 3,4; Y.W.C.A., 1,2, 3,4; College Y, 1,2; Wesley Foundation, 1,2, 3,4; Glee Club, 2; Chorus, 2; Student Council, 2; Radio Workshop, 1,2.

MILDRED SACKETT—Stevens Point; Major: Home Economics; Minors: General Science, Biology, History; Home Economics Club, 1,2, 3; Sigma Zeta, 2,3; Glee Club, 1; Forum, 2,3.

ARLENE SEMANKO—Superior; Major: Home Economics; Minors: General Science, Biology,

English; Home Economics Club, 1,2,3,4, Vice-President, 4; Forum, 2,3,4; Glee Club, 1,2,3,4; Tau Gamma Beta, 4; Newman Club, 1,2,3,4; Y.W.C.A., 2,3,4; Nelson Hall Head Manager, 4; W.A.A., 4.

AUDREY SHORT—Granton; Major: Primary Education; Primary Council, 1,2,3,4, Vice-President, 4; Glee Club, 2,3; Tau Gamma Beta, 2,3,4, Recording Secretary, 3; Y.W.C.A., 1,2.

DOREEN SHORT—Neillsville; Major: Home Economics; Minors: Biology, English; Tau Gamma Beta, 1,2,3,4, Recording Secretary, 4; Home Economics Club, 1,2,3,4; Y.W.C.A., 1,2,3; Forum, 2,3,4; College Y, 1.

GERTRUDE SPYCHALLA—Wausau; Major: Intermediate Education; Grammar Round Table, 2,3,4; Newman Club, 4.

ADELINS THEISEN—Manitowoc; Major: Primary Education; Newman Club, 4; Primary Council, 4; Glee Club, 4.

SHIRLEE TOBIAS—East Chicago, Ind.; Major: Primary Education; Omega Mu Chi, 1,2,3,4, Secretary, 4, Historian, 3, President, 4; Primary Council, 1,2,3,4, Secretary, 4; Glee Club, 2,3,4; Class Treasurer, 2; Iris, 4.

1945 Degree Graduates 1945



WALTERS

WINN

WISHLINSKI

WOJAN

GERALDINE WALTERS—Montello; Major: Primary Education; Primary Council, 1,2,3,4, Program Chairman, 4; Gamma Delta, 1,2,3,4; President of Nelson Hall, 4; Sigma Tau Delta, 4.

BERENICE WINN—Gillett; Major: English, Minors: Art, Speech; College Theater, 4.

LUCILLE LEE WISHLINSKI—Iola; Major: Home Economics; Minors: English, Biology; Tau Gamma Beta, 1,2,3,4, Press Representative, 2, President, 4, Pan Hell Representative, 4; Home Economics Club, 1,2,3,4; Forum, 2,3,4; Pointer, 2; Iris, 2.

VIRGINIA WOJAN—Antigo; Major: Home Economics; Minors: Biology, History; Home Economics Club, 1,2,3,4; Forum, 2,3,4; Band, 1,2,3.

1945 Degree Graduates 1945



SCOTT

SICKLINGER

SMITH

MARGARET SCOTT—Hancock; Major: Four Year State Graded; W.A.A., 2; Rural Life Club, 2; Wesley Foundation, 2; Y.W.C.A., 2.

ARLEEN SICKLINGER—Marathon; Major: Two Year Rural; Rural Life Club, 1,2, Vice-President, 2; Newman Club, 2; Student Council, 2.

MYRLUS SMITH—Endeavor; Major: Two Year Rural; Rural Life Club, 1,2, President, 2; Glee Club, 1,2; Band, 1,2; Wesley Foundation, 2.

1945 Diploma Graduates 1945

Helen Braatz, Edward Denk, Elmira Junchen, Beatrice Pavey, Lucille Pfund, Emma DeCanter, Grace Schmidt

Graduates Without Pictures

PHYLLIS UMLAUF



LORETTA GOTCHY



CAROL OCKERLANDER



BETTY KLOPOTEK



VIOLET FOEMMEL



ETHEL ANDERSON



BERTHA BENNETT



MARY LOU O'KRAY



VIOLET COUSINEAU



MEREDYTH MYKLEBY



Some Members of the 1944 Senior Class

LUELLA CHRIST



MARY HEBRON



BLANCHE PADOUR



KATHRYN GULLICKSON



JEAN GULLICKSON



JACQUELINE STAUBER



HARRIET COEY



RUTH CHROUSER



ALICE BUTH



KATHLEEN SCHAEFER



Some Members of the 1944 Senior Class

The Class of 1946



Ed Nigbor,
President



Mary Asenbrener,
Vice-President



Elvira Lindow,
Secretary



Jane Miller,
Treasurer

The Class of 1946 has shrunk since it was listed as "a large group of energetic and ambitious Freshmen" in the 1943 Iris, and with the diminishing numbers, the responsibilities of each individual have increased in direct proportion. Juniors have shown themselves, however, both willing and able to carry the load with distinction.

They have excelled in the scholastic field, as is proven by the fact that 11 members have been elected to honorary fraternities. The Greek social sororities claim many of this class as members and leaders. Juniors holding offices in Omega Mu Chi are Ellen Gordon, Katherine Hope and Lucille Vaughan. Joyce Rathke is president of the Tau Gamma Betans.

The Juniors have done well by the publications also. The Iris staff is headed by Editor Jane Miller. Eulah Walter is circulation manager of the Pointer, and, working on both Pointer and Iris staffs, are Doris Ubbelohde, Elvira Lindow and Amenzo Warden.

The Juniors elected Edward Nigbor to be their president. Edward is a member of the Student Council, and has been Fred J. Schmeekle's right hand man as assistant in the science department. Vice-president Mary Asenbrener is a Home Economics major, and is a member of Sigma Zeta. Elvira Lindow, secretary of the Junior class, is an English major. She is News Editor of the Pointer, and a member of Sigma Tau Delta. Also majoring in English is treasurer Jane Miller, who holds the position of production manager of Radio Workshop and editor of the Iris, and is a member of Sigma Tau Delta.

The absent members of the Class of 1946—those who were called to serve their country and those who entered other fields—may feel satisfied that the students who stayed to carry on the standard of service and leadership in the scholastic field will do a good job.

The Class of 1946



2nd Row—E. Nigbor, E. Walter, E. Gordon, V. Brandl, M. Reed, A. Warden

1st Row—M. Hemmrich, J. Rathke, K. Hope, E. Goeler, M. Stimm, B. Haberkorn



2nd Row—D. Ubbelohde, M. Hutchins, G. Lepak, A. Westfahl, D. Radtke, K. Paape

1st Row—V. Lindow, C. Winter, J. Miller, C. Pronz, L. Lemsky, D. Johnson, B. Furstenberg

The Class of 1947



Lucille Vaughan,
President



Dolores Cowles,
Vice-President



Gloria Rybicke,
Secretary



Helen Wiczorek,
Treasurer

Who are those ambitious people thronging the halls of CSTC? The Sophomores! You've guessed it, all 31 of them. They are the proud beings who have escaped being freshmen forever. The class of '47 boasts of two males who are very active in school activities. The 29 girls expect to carry on for those other males who are in the service and are doing a splendid job there.

Of the 29 girls enrolled, six are in the Home Economics department. Those familiar white dresses are worn by Catherine Firkus, Kay Hansen, Bess Jones, Lydia Spaite, Helen Wiczorek, and Monica Gill.

Four students are active on the Student Council, with Kay Hansen as vice-president, and Catherine Firkus, Arleen Sicklinger, and Bess Jones as members.

In the musical department, the Sophomore girls are contributing. The following are members of the Glee club: Dolores Cowles, Nelda Dopp, Barbara Felker, Catherine Firkus, Monica Gill, Kay Hansen, Bess Jones, Ann Kelley, Joyce Kopitzke, Grace Lepak, Elizabeth McLaughlin and Jeanette Feirer. Dolores Cowles, Ann Kelley, and Mildred Ross play in the college band.

At the annual fall election of class officers, Lucille Vaughan was elected president; Dolores Cowles, vice-president; Gloria Rybicke, secretary; and Helen Wiczorek, treasurer.

The Class of 1947



3rd Row—G. Halverson, L. Vaughan, D. Cowles, J. Milton, D. Olk
2nd Row—N. Dopp, F. Glaza, E. DeCanter, E. McLaughlin, J. Rustad
1st Row—G. Schmidt, R. Ruff, G. Rybicke, S. Waag, J. Kopitzke



2nd Row—C. Firkus, B. Jones, H. Hardrath, K. Hansen, M. Gill
1st Row—H. Wiczorek, J. Feirer, A. Kelley, D. Jenkins, H. Jacobson, B. Felker

The Class of 1948



Joyce Proctor
Vice-president



Joan Kelley
Secretary



Geraldine Clark
Treasurer

President, **Don Vetter**, in the service of our country.

In mid September there were seen roaming through the halls of CSTC some young people with a slightly bewildered look. They were the freshmen, fewer in number than in years before the war, but having as much enthusiasm and determination as any other freshman class of years past.

This year the freshmen, in some respects, are more fortunate than those of other years because they have been able to participate in activities usually barred to them. Through this they have been able to gain much valuable experience early in their college career. Both school publications, *The Pointer* and *The Iris*, are staffed by several freshmen. The personnel of the Radio Workshop includes a few freshmen as well. A goodly number of the freshman girls are seen in the Girls' Glee club. The basketball season was successful though short. The squad was composed of all freshman boys, a large percentage of whom were called into the armed forces before the basketball schedule was completed. Unfortunately, the remaining boys were not large enough in numbers to carry on this sport.

The freshmen have been active in many of the social functions which have taken place in our college. Early in the social calendar a Hallowe'en party was held. Before this event, the men in our school, faculty included, held a meeting for the purpose of choosing a queen to reign over the festivities. A freshman girl, Gloria Heimbruch, was the lucky one. To be her king she chose Richard Walczak, who helped her rule.

There are many students in the Freshman class from various parts of the state, and a few come from out of the state. The class of '48 thinks it is a good class, and sincerely hopes that it can live up to the standard maintained by former freshman classes.

The Class of 1948



3rd Row—B. Crawford, G. Marshall, F. Price, T. Tushinski, D. Schulist, E. Olson, M. Albrecht, E. Stadler

2nd Row—K. Berg, D. Ockerlander, H. Weisbrot, H. Nigbor, M. Juetten, D. Below, M. Due, A. Lang

1st Row—L. Tosch, J. Martens, G. Heimbruch, F. Kostka, K. Prey, M. Dumdei, J. Cone



3rd Row—D. Westenberger, M. Walkush, L. Casanova, E. Cholewinski, S. Emry, D. Wiersig, B. Mellin

2nd Row—R. Kostuhoski, L. Plunkett, L. Anderson, V. Kesy, M. Kopchinski, R. Schlender, F. Kostuck

1st Row—A. Kaziak, L. Tanner, C. Bergen, J. Kelley, D. Jelinek, J. Proctor, H. Bemowski

The Class of 1948



3rd Row—B. Jacobi, S. Horn, G. Zenda, A. Sherfinski, B. Kunde, D. Loberg, K. Phillips
 2nd Row—T. McClyman, J. Jacobson, M. Gunderson, B. McConley, M. Hales, M. Brecht
 1st Row—P. Nelson, P. Harrington, V. Sawyer, B. Hougum, D. Severson, E. Markwardt, C. Krogness



3rd Row—G. Jones, N. Barthels, P. Thorpe, J. Markee, J. Woltman, R. Pejsa, E. Keller
 2nd Row—B. Klein, D. Karner, E. Davidson, A. R. Johnson, R. Rozek, J. Little, K. Peterson
 1st Row—B. Maki, F. Kutchenriter, L. Peters, L. Pearson, L. Levra, R. Bertz, B. Jacobi



Mr. Rightsell dines
 Our gals
 Wintertime
 Action
 Mrs. Jonas
 Kaziak and Horse
 Hallowe'en Party
 W.A.A. tea



TOP PICTURE

3rd Row—J. Bregger, V. Wojan, B. Peterson, A. Semanko, J. Good, B. Davis

2nd Row—H. Buchholz, J. Cattnach, J. Connor, I. Mork, D. Short

1st Row—E. Eager, M. Halama, G. Walters, E. Ofstun

BOTTOM PICTURE

3rd Row—A. Niven, D. Davids, R. LaBarge, B. Puariea, V. Grassl, A. Priem

2nd Row—L. Wishlinski, G. Johnson, L. Dunn, G. Heike, M. Grossman

1st Row—H. Tibbetts, J. Joosten, H. Lundgren, M. Pounder

Juniors 1944

Juniors 1944



TOP PICTURE

3rd Row—A. Warden, E. Anderson, B. Bennett, K. Paape, P. Albrecht, A. Esselman, E. Nigbor

2nd Row—M. Knudson, M. Seeger, V. Foemmel, M. O'Kray, P. Selz, M. Sanger

1st Row—M. Reed, B. Haberkorn, B. Schulz, C. Winter, B. Klopotek, D. Radtke

BOTTOM PICTURE

3rd Row—A. Westfahl, E. Walter, C. Pressentin, M. Asenbrener, I. Wojan

2nd Row—M. Stock, J. Rathke, P. Brooks, E. Wood, Q. Vahl, M. Sackett

1st Row—M. Hemmrich, M. Hutchins, B. Furstenberg, M. Murphy, M. Johnson, E. Sanger

Sophomores 1944

Sophomores 1944



TOP PICTURE

- 3rd Row—J. Lehmann, J. Nikolay, G. Lepak, B. Crowns, R. Hobart, H. Berens, B. Burch, J. Willcox
 2nd Row—Y. Moreau, D. Pett, J. Steege, E. Erickson, D. Cowles, C. Firkus, M. Esselman
 1st Row—G. Rybicke, B. Jones, H. Jacobson, A. Sicklinger, L. Colvin, V. Eskritt, E. Goeler

BOTTOM PICTURE

- 3rd Row—B. Critchley, B. Hardrath, L. Bras, K. Hope, B. Hoffman, A. Treder, D. Becker, P. Johnson
 2nd Row—J. Norton, M. Hickey, V. Hager, L. Schmidt, L. Spaete, B. Felker, B. Fjelstad
 1st Row—M. Ross, S. Waag, M. Waag, J. Kopitzke, A. Kelley, M. Johnson, D. Guth

Freshmen 1944

Freshmen 1944



3rd Row—A. Bowman, R. Johnson, G. Buchholz, E. Anderson, B. Marquardt, M. Smith, L. Kunes
2nd Row—E. McLaughlin, V. Trantow, M. Lawrence, M. Boycks, L. Cook, G. Vannie, N. Songe
1st Row—A. Hager, H. Wiczorek, J. Rustad, B. Stange, S. Woodliff, N. Bork

About The Year 1943-1944

The school year 1943-1944 was one of much activity at CSTC. Best remembered, no doubt, is the 97th College Training Detachment, Air Crew, which was here from March, 1943, to June of 1944. The cadets helped to make possible the Harvest Ball and the Snow Ball given by the sororities. There were several romances and marriages as a result of friendships made during this time. Nelson Hall was called Nelson Hall Barracks then.

The Campus Canteen and the Omega Mu Chi Shopping Service for the Air Corps trainees were organized and the college counter prospered. Dean Elizabeth Pfiffner sent out an urgent plea for Red Cross workers and many students and faculty members answered the call.

College Theater presented many long-to-be-remembered plays, among them, "Arsenic and Old Lace". A wall case for pictures of former students who are now in service was put up by Tau Gamma Beta and by the end of the year was nearly filled. The Student Lounge was planned and decorated by several school organizations.

Miss Myrtle Spande became a member of the college faculty to replace Miss Ruby Greiling, who entered Red Cross work overseas. There were losses on the faculty because of the death of Thomas A. Rogers and Gilbert Faust's leaving for the Navy.

In March, CSTC put on a Victory Carnival at which over a thousand dollars' worth of war bonds was sold. In March, also, the college won the Treasury "School at War Flag" because 90 percent of the students purchased war stamps.

To climax a busy but enjoyable year there was the 50th anniversary banquet in May for all alumni, faculty, and seniors. Yes, CSTC was fifty years old in 1944.



Playmates —

Primary Council



MEMBERS

Jacqueline Bregger
Alice Breske
Betty Brooks
Lucille Dunn
Florence Flugaur
Jeanie Glenzer
Rose Marie Howes
Mary Lou Hutchins
Helen Jacobson
Joan Joosten
Joyce Kopitzke
Beatrice Pavey
Lucille Pfund

Audrey Priem
Dorothy Radtke
Marlys Reed
Gloria Rybicke
Audrey Short
Marjorie Stimm
Adeline Theisen
Shirlee Tobias
Solveig Waag
Geraldine Walters
Aletha Westfahl
Clara Winter

The Primary Council is an organization of those students who are specializing in primary education. The group is fortunate in having an able and popular leader in their adviser, Miss Susan Colman.

The council seeks to foster a high professional standard among its members at its monthly meetings. Because the council is eager to develop its members socially as well as professionally, many social functions are held, these being in the form of picnics, theater parties and just plain "get-togethers" after many of the meetings.

Officers of Primary Council are: Audrey Short, president; Betty Brooks, vice-president; Shirlee Tobias, secretary; and Marjorie Stimm, treasurer.

Grammar Round Table

Grammar Round Table is an organization of the CSTC students who are interested in teaching in the intermediate grades and junior high school. Charles F. Watson, director of the grammar department, is their capable adviser.

Monthly meetings are held, at which time various topics are discussed. The discussions are informal and include subjects which are of current interest. The usual plan of procedure is a brief resume of the topic by one of the members, followed by a general discussion by the entire group. Subjects of discussion this year included the use of propoganda, the problem of post-war Germany, and the Russian situation.

Even the Dormites managed to rouse themselves early enough one Saturday morning to join the rest of the group for an interesting tour of the Whiting-Plover paper mills. Of course, everyone was on hand, too, for the crowning activity of the year, a picnic at Iverson Park.

Officers of the group are: Marion Grossman, president; Dorothy Davids, vice-president; Alta Nivens, secretary-treasurer.

MEMBERS

Estelle Behling	Alta Niven
Virginia Brandl	Carolyn Pronz
Minnie Mae Brehm	Joyce Rathke
Dorothy Davids	Gertrude Spychalla
Marion Grossman	Doris Ubbelohde
Helen Madden	



Forum



MEMBERS

Mary Asenbrener
Janet Benn
Hilda Buchholtz
Dolores Cowles
Nelda Dopp
Jeanette Feirer
Barbara Felker
Catherine Firkus
Betty Furstenberg
Monica Gill
Eunice Goeler
Janet Good
Ellen Gordon
Elizabeth Haberkorn
Martha Halama
Kay Hansen
Halbert Hardrath
Gertrude Heike
Marion Hemmrich
Katherine Hope
Mary Ann Hotvedt
Dorothy Jenkins
Glenna Johnson
Margaret Johnson
Ruby Johnson
Bess Jones
Joseph Kalina
Agnes Kelley
Kathryn Kenney
Alice Klake
Raymond La Barge

Grace Lepak
Elvira Lindow
Arlene Lloyd
Irene Ludwig
Helen Lundgren
Roger McCallum
Elizabeth McLaughlin
Jane Miller
Janice Milton
Edward Nigbor
Edythe Ofstun
Dick Olk
Karl Paape
Bernadine Peterson
Elizabeth Pohlman
Dolores Rondeau
Mildred Ross
Betty Ruth Ruff
Jessie Rustad
Mildred Sackett
Arlene Semanko
Doreen Short
Lydia Spaete
Lucille Vaughan
Eulah Walter
Amenzo Warden
Helen Weiczorek
Bernice Winn
Lucille Wishlinski
Virginia Wojan

One of the largest organizations of Central State is the Forum. The members are the students who are training for high school teaching. Its purpose is to promote the intellectual and social welfare of its members. The problems confronting teachers are discussed, and an effort is made to solve them.

Raymond M. Rightsell, director of the Secondary Division, heads this professional organization. Forum activities are varied, and the members lead in many college activities, which are a large part of their professional training. The Home Economics department, under the direction of Miss Allen, is a part of the Forum.

Officers of Forum are: Dick Olk, president; Kathryn Kenney, vice-president; Ellen Gordon, secretary-treasurer.

Rural Life Club

Rural Life is made up of all students in the Rural State-Graded division. Miss May Roach, adviser for Rural Life, is known to all CSTC students for her friendliness and sparkling humor.

Rural Life holds semi-monthly meetings, with programs which include dancing, parties, and speakers of note in the Rural School program.

One meeting each month is devoted to a social gathering and the other to giving a program. The programs are built on subjects which are important in rural living, and are planned to assist young teachers who are preparing to go into rural areas to work.

Officers of the organization are: first semester, Edward Denk, president; Irene Mork, vice-president; Doris Johnson, secretary; Emma DeCanter, treasurer; second semester, Myrlus Smith, president; Arleen Sicklinger, vice-president; Doris Johnson, secretary; Emma DeCanter, treasurer.



MEMBERS

Betty Apfelbeck
Dorothy Below
Rosemarie Bertz
Helen Braatz
Emma DeCanter
Edward Denk
Frances Glaza
Casmira Hansen
Sylvia Horn
Bernette Jacobi
Bernice Jacobi
Alice L. Johnson

Doris Johnson
Geraldine Jones
Elmira Junchen
Eileen Keller
Ramona Klosinski
Anita Lang
Lucille Lemsky
Jane Little
Thelma McClyman
Beulah McConley
Irene Mork
Lois Pearson

Rita Pejsa
Kathrynn Phillips
Ramona Rozek
Grace Schmidt
Margaret Scott
Agnes Sherfinski
Arleen Sicklinger
Myrlus Smith
Mary Van Dusen
Jean Woltman
Geraldine Zenda

1944 Forum



TOP PICTURE

3rd Row—R. LaBarge, D. Scharf, B. Peterson, A. Warden, V. Wojan, A. Semanko, J. Graham, E. Nigbor
 2nd Row—D. Short, G. Heike, H. Buchholz, M. Halama, H. Tibbetts, B. Puariea, E. Eager, G. Johnson
 1st Row—M. Mykleby, V. Grassl, H. Lundgren, M. Pounder, B. Haberkorn, E. Ofstun, V. Cousineau

BOTTOM PICTURE

3rd Row—B. Amundson, M. Asenbrener, A. Klake, R. Phelan, J. Good, A. Buth, B. Eickhorn
 2nd Row—J. Rathke, M. Weberg, B. Colbert, E. Walter, R. Eide, M. Hotevdt, P. Brooks
 1st Row—M. Hemmrich, E. Gordon, K. Kenney, B. Furstenberg, M. Sackett, M. Johnson, M. Murphy

1944 Primary Council



3rd Row—D. Radtke, L. Brock, J. Bregger, G. Quinn, M. Stock, D. Belongia, H. Rasmussen, E. L. Owen, M. L. Hutchins
 2nd Row—P. Lien, J. Leubner, A. Short, L. Dunn, B. Brooks, A. Westfahl, L. Pfund, G. Walters
 1st Row—Miss Colman, L. Gotchy, R. Michelsen, R. M. Howes, J. Joosten, A. Grube, P. Umlauf, F. Flugaur, S. Tobias

1944 Rural Life



TOP PICTURE

3rd Row—B. Klopotek, V. Hager, P. Kolstad, M. Carl, I. Mork, B. Wood, I. Wojan
 2nd Row—G. Newby, B. Bennett, A. Esselman, M. O'Kray, V. Femmel, E. Sanger, M. Seeger
 1st Row—O. W. Neale, E. Anderson, V. Trantow, P. Selz, G. Vahl, M. Sanger

BOTTOM PICTURE

3rd Row—V. Eskritt, L. Colvin, M. Smith, B. Marquardt, E. Anderson, P. Albrecht, A. Treder
 2nd Row—J. Lau, E. Schulz, C. Winter, L. Kunes, M. Knudson, L. Schmidt, M. Hickey
 1st Row—J. Rustad, A. Hager, B. Stange, A. Sicklinger, N. Bork, L. Cook, L. Bras

1944 Home Ec Club

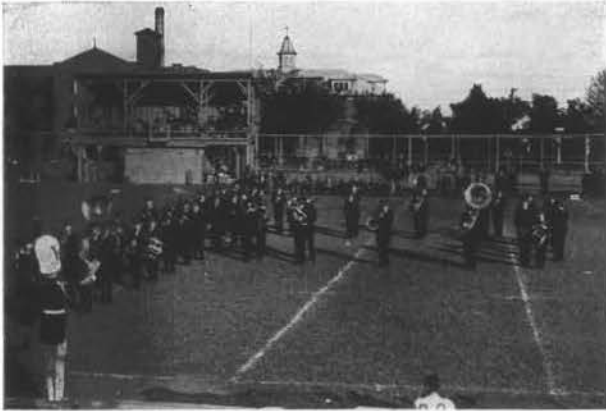


3rd Row—D. Scharf, M. Asenbrener, B. Hoffman, B. Peterson, N. Songe, A. Semanko, V. Wojan, D. Short, B. Puarica
 2nd Row—B. Amundson, H. Buchholz, M. Mykleby, H. Tibbetts, S. Woodliff, M. Sackett, G. Johnson, B. Fjelsted, L. Spæte
 1st Row—B. Haberkorn, M. Halama, G. Heike, M. Pounder, B. Jones, H. Lundgren, M. Johnson, M. Murphy, E. Eager, V. Grassl

Memories



Memories



Y. W. C. A.



The YWCA, one of Central State's most active organizations, is a member of the National Student Council of YWCA.

Last fall Freshman girls were entertained by old members at a meeting held at Iverson Park. Following this, at a meeting later in the year, new members were inducted at a candle light service. At Christmas the Y girls gave baskets to needy families in the city and also sponsored caroling in which all campus religious organizations participated. One of the best social events of the year, a Kid Party, on Valentine's Day was sponsored by the "Y Dubs", as they are known.

Officers of the club are Joyce Rathke, president; Eulah Walter, vice president; Alice L. Johnson, secretary; and Lucille Dunn, treasurer. The patronesses for the organization are Mrs. William C. Hansen, Mrs. O. W. Neale, Mrs. O. F. Nixon, and Miss Helen Meston.

MEMBERS

Alta Niven
Marion Grossman
Solveig Waag
Gloria Heimbruch
Marion Albrecht
Jeanne Cone
Joyce Connor
Dorothy Davids
Mavis Dumdei
Lucille Dunn
Isla Erickson
Jeanie Glenzer

Betty June Maki
Janice Milton
Thelma McClyman
Irene Mork
Doris Ockerlander
Evelyn Markwardt
Bernadine Peterson
Kathryn Peterson
Kay Prey
Faith Price
Joyce Proctor
Lu Ruff

Janet Good
Marion Hemmrich
Sylvia Horn
Betty Gene Hougum
Mary Lou Hutchins
Joyce Jacobson
Alice L. Johnson
Doris Johnson
Caroline Krogness
Eileen Leiby
Arlene Lloyd

Joyce Rathke
Virginia Sawyer
Dolores Schulist
Margaret Scott
Arlene Semanko
Dorothy Severson
Lucille Tanner
Patricia Thorpe
Doris Ubbelohde
Eulah Walter
Jean Woltman

Wesley Foundation

Wesley Foundation is an organization of the Methodist students at CSTC. Wesley seeks to maintain student contact with the church and has an active program which includes devotions, lectures, spiritual guidance, discussions, and social activities of a varied nature.

Affiliated with national and state organizations, Wesley strives to stimulate religious scholarship on the campus. During the year, representatives attended two state conferences held at Madison and Appleton.

Officers of the group are Richard Noble, adviser; Doris Johnson, president; Isla Becker, secretary; Doris Ubbelohde, Virginia Sawyer, program chairmen. Reverend Clifford Fritz of St. Paul's Methodist Church and Dr. Arthur S. Lyness, faculty sponsor, work closely with the organization and are always ready to be helpful in any way.



MEMBERS

Dorothy Below
Kathleen Berg
Minnie Mae Brehm
Betty Ruth Crawford
Nelda Dopp
Bernard Ellis
Doris Johnson
Irene Mork
Ethelyn Olson
Bernadine Peterson
Joyce Proctor
Virginia Sawyer
Margaret Scott
Myrlus Smith
Doris Ubbelohde

Gamma Delta



MEMBERS

**Hilda Buchholz
Dorothy Davids
Mavis Dumdei
Marion Grossman
Marjorie Hales
Gertrude Heike
Bernette Jacobi
Bernice Jacobi
Arlene Lloyd
Dorothy Loberg
Irene Ludwig
Lorraine Peters
Faith Price
Joyce Rathke
Mildred Ross
Patricia Thorpe
Gerry Walters
Aletha Westphal**

Beta Chapter of Gamma Delta is part of an international association of Lutheran college and university students. Gamma Delta is sponsored by the Student Welfare Committee of the Missouri Synod and is governed of, for, and by Lutheran students.

Among the aims of Gamma Delta are the encouragement and maintenance of Lutheran fellowship and lay leadership among the Lutheran students of Central State Teachers College.

Business and educational meetings were held throughout the year and social activities were liberally interspersed among them. The discussion of questions by the group played a prominent part. Outside speakers were also brought in to address the group.

Officers guiding Gamma Delta were Irene Ludwig, president; Joyce Rathke, vice president; Aletha Westphal, secretary; Marion Grossman, treasurer. Faculty adviser is Dr. Harold M. Tolo. The organization has Reverend William Ludwig as a source of spiritual guidance and leadership.

MEMBERS

Margaret Albrecht
Lloyd Anderson
Naomi Barthels
Clarice Bergen
Mary Due
Isla Erickson
Betty Hougum
Shirley Haskins
Gloria Heimbruch
Marion Hemmrich
Mary Ann Hotvedt
Helen Jacobson
Joyce Jacobson
Alice L. Johnson



Alice R. Johnson
Geraldine Jones
Joyce Kopitzke
Helen Lundgren
Betty June Maki
Edythe Ofstun
Kathryn Peterson
Lucille Pfund
Jessie Rustad
Rolland Schlender
Dorothy Severson
Lucille Tanner
Solveig Waag
Jean Woltman

The Lutheran Student Association of America is a national organization for all Lutheran students. L.S.A. seeks to stimulate use of the Bible, to encourage loyal church participation, to develop healthy social life, and to develop a conscious need of Christ in a modern world.

This program is reflected in L.S.A.'s activities. Marion Hemmrich represented Stevens Point at the regional conference held at Augsburg college in Minnesota. A picnic, Christmas Party, and a service for the World Day of Prayer stand out as interesting events of the year.

Group officers are Alice Johnson, president; Marion Hemmrich, vice-president; Helen Jacobson, secretary; and Clarice Bergen, treasurer. Miss Myrtle Spande acts as faculty adviser. Reverend C. Russell Johnson of the First English Lutheran Church is the religious adviser.

Newman Club



MEMBERS

M. Asenbrener
 A. Breske
 J. Bregger
 M. Brecht
 R. Bertz
 V. Brandl
 D. Crueger
 G. Clark
 M. E. Benjamin
 E. Denk
 B. Felker
 C. Firkus
 J. Feirer
 E. Goeler



F. Flugaur
 M. Gill
 P. Harrington
 D. Jelinek
 M. Juetten
 D. Jenikns
 J. Jenkins
 J. Kelley
 F. Kostka
 B. Kampschoer
 R. Klasinski
 D. Karner
 M. Kopchinski
 S. Keleshek
 E. Klinger
 F. Kutchenriter
 R. LaBarge
 L. Lemsky
 J. Love
 D. Lepak
 G. Lepak
 A. Kelley
 M. Murphy
 G. Marshall
 L. Levra
 M. Martens
 E. Nigbor
 H. Nigbor
 C. Pronz
 P. Pasternacki
 R. Pejsa
 R. Rozek
 G. Rybicke
 G. Spychalla
 A. Sicklinger
 M. Simonis
 A. Sherfinski
 G. Schmidt
 A. Tushinski
 L. Tosch
 A. Theisen
 L. Vaughan
 D. Vetter
 M. Walkush
 H. Wiczorek
 C. Winter
 H. Weisbrot



Newman club is an organization of Catholic students and is affiliated with the National Federation of Newman clubs. It strives to promote a spirit of Catholic fellowship on the campus.

Club activities consist largely of discussions, parties, and lectures. The problem of discussion for the year 1944-45 was Catholic marriage, and books by Catholic authors were reviewed and discussed and current problems were considered.

Group officers are Florence Flugaur, president; Edward Nigbor, vice-president; Ann Kelley, secretary; and Jacqueline Bregger, treasurer. Reverend Donald Theisen, assistant pastor at St. Stephen's church, is spiritual adviser and Miss May Roach is the faculty adviser.



Faculty Reception
 Tolos at tea
 Refreshments
 Jeanie
 Miss Barber pours
 Mr. Neale is feted
 "Edy"
 "Joe"
 Banquet time

Girls Glee Club



OFFICERS

President	Eulah Walter
Vice-president	Joyce Rathke
Secretary	Joan Joosten
Treasurer	Marjorie Stimm
Librarian	Mildred Ross
Business Manager	Irene Ludwig

PERSONNEL

FIRST SOPRANO

Clarice Bergen
 Jeanne Cone
 Dolores Cowles
 Esther Davidson
 Barbara Felker
 Catherine Firkus
 Marcia Gunderson
 Shirley Haskins
 Joan Joosten
 Mary Juetten
 Joyce Kopitzke
 Arlene Lloyd
 Kathryn Prey
 Myrlus Smith
 Adeline Theisen

SECOND SOPRANO

Kathleen Berg
 Rosemarie Bertz
 Margaret Brecht
 Betty Brooks
 Betty Ruth Crawford
 Nelda Dopp
 Mavis Dumdei
 Isla Erickson
 Monica Gill
 Sylvia Horn
 Betty Hougum
 Bess Jones
 Dolores Lepak
 Grace Lepak
 Lorraine Levra
 Elvira Lindow

Betty June Maki

Jean Markee
 Gertrude Marshall
 Mildred Ross
 Lucille Tosch
 Eulah Walter
 Aletha Westfahl

ALTO

Dorothy Davids
 Janet Good
 Kathryn Hansen
 Gloria Heimbruch
 Mary Lou Hutchins
 Joyce Jacobson
 Anne Kelley
 Kathryn Kenney

Dorothy Loberg

Irene Ludwig
 Elizabeth McLaughlin
 Patricia Nelson
 Doris Ockerlander
 Kathryn Phillips
 Faith Price
 Audrey Priem
 Joyce Rathke
 Marlys Reed
 Arlene Semanko
 Dorothy Severson
 Lucille Tanner
 Patricia Thorpe
 Shirlee Tobias
 Clara Winter
 Jean Woltman

Girls Glee Club



The Girls Glee club of 1945 is one of the largest organizations on the campus, with a membership of 65 girls who meet twice a week under the direction of Peter J. Michelsen. Mr. Michelsen is a graduate of the Seminary, the Military School of Music, and Music Conservatory of Oslo, Norway, and a graduate of the Vander-Cook School of Music, Chicago.

The first appearance of the Glee club was at its annual formal Christmas concert, which was well attended on the two successive nights it was given. Outstanding numbers on the program were "Voice of Freedom" and "Hallelujah Chorus". As featured soloists were Shirley Haskins, Dolores Cowles and Joan Joosten. The latter two, assisted by Patricia Nelson, sang as a trio. An orchestra, whose members consisted of individuals from CSTC and from various schools in the state, served as accompaniment. Former Central State students returned this year to sing in the concert and local Stevens Point men also participated in the program. Leland M. Burroughs was the narrator for the program and Warren G. Jenkins was in charge of lighting effects. Miss May Roach directed the presentation of the annual Nativity tableau.

The back drop was made by the Art department students under the direction of Miss Edna Carlsten. It consisted of three church windows which portrayed the birth of Christ.

On March 8 the Glee club appeared before the student body with the program of the selections which they presented on their tours to different cities.

On Palm Sunday the Easter Concert was presented. The outstanding songs were the "Lord's Prayer", "Almighty Lord" and the "Twenty-third Psalm". Glee club members were dressed in black and white gowns, and stood before a back drop representing the Holy Cross. In April, the club presented its spring concert.

The final appearance of the Glee Club was a tribute to the graduating class at the Commencement Exercises.

Officers of the Glee Club are: Eulah Walter, president; Joyce Rathke, vice-president; Joan Joosten, secretary; Marjorie Stimm, treasurer; Mildred Ross, librarian; Irene Ludwig, business manager.

College Theater



Another successful year has rolled by for College Theater.

On October 26 the first play of the season was given. The cast of "The Bride Wore Red Pajamas" included Lloyd Anderson, Max Kopchinski, Berenice Winn, Kay Hansen and Dick Olk, with Warren G. Jenkins and Leland M. Burroughs directing.

"Helena's Husband", an all student production, was presented at an assembly November 16. Its cast was made up of Dorothy Jenkins, Le Roy Plunkett, Bob Cashin, Frank Kostuck, and Betty Pohlman.

College Theater presented three original one-act plays on February 28. "Dorm Daze" by Elvira Lindow, "The Youngest" by Marjorie Stimm, and "Green But Growing" by Gerry Walters were directed by Berenice Winn, Betty Pohlman, and Edythe Ofstun.

Officers of College Theater are: Marjorie Stimm, president; Edythe Ofstun, secretary; Betty Pohlman, treasurer; Roger McCallum, production manager.

MEMBERS

Jackie Breggar
Kay Hansen
Gertrude Heike
Max Kopchinski
Roger McCallum
Edythe Ofstun

Dick Olk
Betty Pohlman
Dorothy Radtke
Marjorie Stimm
Berenice Winn

Radio Workshop



The Radio Workshop is made up of students interested in the various aspects of radio. The goal of this group is to promote better radio listening. Each school day at 3:15 a completely student produced program emanates from the college studios. Four of these programs have received the approval of the Better Listening Committee of the state of Wisconsin. These programs were: **Books and Authors**, **Your Story Time**, **Real Men of Music** and **the Music Album**.

As in previous years, the Radio Workshop has been under the direction of Miss Gertie Hanson. Other members of the staff were Jane Miller, producer; Edythe Ofstun, head controls operator, and William Terrill, recorder.



Painter



EDITORIAL STAFF

Editor—Florence Flugaur; **News Editor**—Elvira Lindow; **Features**—Janet Good, Amenzo Warden, Marjorie Stimm, Bernadine Peterson; **Reporters**—Ruth Ruff, Eunice Goeler, Marion Hemmrich, Mary Lou Hutchins, Kay Hansen, Elizabeth McLaughlin, Jeanette Feirer, Betty Furstenberg, Gertrude Heike, Esther Davidson; **Composition Editor**—Edythe Ofstun; **Assistant Composition Editor**—Doris Ubbelohde; **Publicity Editor**—Mary Ellen Due; **Proof Readers**—Marion Grossman, Naomi Barthels; **Typists**—Mary Juetten, Patricia Nelson, Lucille Dunn

BUSINESS STAFF

Business Manager—Mary Ann Hotvedt; **Assistant Business Manager**—Irene Ludwig; **Circulation Manager**—Eulah Walter; **Circulation Staff**—Catherine Firkus, Betty June Maki, Kathryn Peterson, Dorothy Davids, Joyce Rathke, Kathleen Berg, Dorothy Radtke; **Advertising Manager**—Joseph Kalina

Faculty Advisers—Miss Bertha Glennon, Mr. Raymond M. Rightsell



EDITORIAL STAFF

Editor—Jane Miller; **Assistant Editors**—Doris Ubbelohde, Betty Ruth Crawford; **Reporters**—Bernadine Peterson, Elvira Lindow, Monica Gill, Clarice Bergen, Joan Kelley, Amenzo Warden, Bess Jones, Betty Furstenberg, Dolores Jelinek, Mavis Dumdei; **Art Editor**—Glenna Johnson; **Assistants**—Kay Prey, Jeanne Cone, Betty Pohlman, Shirlee Tobias; **Photography**—Paul Pasternacki, Harold Bemowski, Alvin Kaziak; **Typists**—Pat Nelson, Ethelyn Olson.

BUSINESS STAFF

Business Manager—Kathryn Kenney; **Business Staff**—Rose Marie Howes, Betty June Maki, Kathryn Peterson, Edythe Ofstun, Joseph Kalina

Faculty Advisers—Dr. Harold M. Tolo, Miss Bertha Glennon, Miss Edna Carlsten

Home Ec Club



The Home Economics club is an all-girl organization consisting of students enrolled in the Home Economics department. Capably advising the club is Miss Bessie Mae Allen, head of the Home Economics department.

Meetings of the club are held once a month at which time the girls discuss problems which concern them as future teachers of Home Economics. One of the most interesting meetings consisted of a talk on cosmetics by Mrs. Caryl Humphrey, a local cosmetician. At another meeting the history of home economics was given. This year a sleigh-ride party was planned but it turned out to be a ride on a trailer!

Officers of the club are: president, Gertrude Heike; vice-president, Arlene Semanko; secretary, Dolores Rondeau; treasurer, Bess Jones; and press representative, Bernadine Peterson.

MEMBERS

Mary Asenbrener
Hilda Buchholtz
Catherine Firkus
Monica Gill
Betty Haberkorn
Martha Halama
Kathryn Hansen
Gloria Heimbruch
Joyce Jacobson
Glenna Johnson

Margaret Johnson
Bess Jones
Frances Kutchenriter
Eileen Leiby
Betty June Maki
Patricia Nelson
Helen Nigbor
Doris Ockerlander
Eihelyn Olson
Bernadine Peterson
Kathryn Peterson

Dolores Rondeau
Mildred Sackett
Dolores Schulist
Arlene Semanko
Doreen Short
Lydia Spaete
Patricia Thorpe
Helen Weiczorek
Lucille Wishlinski
Virginia Wojan



Alpha Kappa Rho

"Say It With Music", a weekly fifteen minute radio program over station WLBL has been the outstanding contribution of Alpha Kappa Rho this year. The program, which was presented every Thursday for the first nine weeks of the second semester, was planned to increase the listener's knowledge and appreciation of classical music.

Alpha Kappa Rho is the local honorary music fraternity, which was founded at CSTC in 1937. Peter J. Michelsen has been its faculty adviser since its organization.

Alpha Kappa Rho has as its aim the stimulation of an appreciation of music. Outstanding musicians who have proved their ability in the world of music are considered as members. Students must have a high scholastic average, and have taken a certain amount of work in the various music courses.

The officers are: Irene Ludwig, president, both semesters; Joyce Rathke, Dolores Rondeau, vice-president; Joan Joosten, Dolores Cowles, secretary; Dolores Rondeau, Mary Ann Hotvedt, treasurer.



MEMBERS

Dolores Cowles
Mary Ann Hotvedt
Joan Joosten
Irene Ludwig
Roger McCallum
Joyce Rathke
Dolores Rondeau
Mildred Ross
Marjorie Stimm
Eulah Walter



Sigma Zeta



People with eyes to the future are the members of Sigma Zeta. Their aim, as members of this national honorary science fraternity, is to create interest and to promote scholarship in the various fields of science. With this aim in mind, members are chosen who have a high academic average, and who are majoring in mathematics or science.

During the year, Sigma Zetans have listened to talks on current scientific interests. Among their speakers was Dr. Wessink of Wisconsin Rapids, who explained the chemistry of paper

making. Other talks were on flying, tropical diseases, the Chicago Chemistry convention, and the electronic microscope which is now being developed.

The local chapter of Sigma Zeta was organized here in 1929. The officers this year are: master scientist, Bernadine Peterson; vice-master scientist, Mary Ann Hotvedt; recorder-treasurer, Dr. Arthur S. Lyness; program chairman, Edward Nigbor; press representative, Betty Furstenberg.

MEMBERS

Mary Asenbrenner	Mary Ann Hotvedt
Hilda Buchholz	Roger McCallum
Edward Denk	Edward Nigbor
Betty Furstenberg	Bernadine Peterson
Betty Haberkorn	Mildred Sackett

ASSOCIATE MEMBER

Bess Jones

Sigma Tau Delta



The members of Psi Beta chapter of Sigma Tau Delta, national honorary English fraternity, are those who have shown outstanding achievement in the field of English, and who have a two point average in their major or minor in English. It is the aim of Sigma Tau to encourage an intelligent appreciation of literature and to foster creative writing.

Under the efficient guidance of their officers, members of Sigma Tau have worked for their goal of "Sincerity, Truth, and Design". They sponsored nine radio programs over

WLBL, using material contributed by English students of CSTC, and by other chapters of the organization in various teachers colleges. Several members had the honor of having some of their original work printed in the "Rectangle", the national publication of Sigma Tau Delta.

The officers are: Irene Ludwig, president; Florence Flugaur, vice-president; Edythe Oistun, treasurer; Janet Good, historian; Alice Breske, press representative. Leland M. Burroughs is faculty adviser.

MEMBERS

Alice Breske
Dorothy Davids
Florence Flugaur
Eunice Goeler
Janet Good
Ellen Gordon
Marion Hemmrich
Gertrude Heike
Elvira Lindow
Irene Ludwig

Roger McCallum
Jane Miller
Edythe Oistun
Bernadine Peterson
Marjorie Stimm
Doris Ubbelohde
Eulah Walter
Geraldine Walters
Amenzo Warden

Tau Gamma Beta

FIRST SEMESTER

Lucille Wishlinski
 Joyce Rathke
 Doreen Short
 Dolores Rondeau
 Dorothy Davids
 Joan Joosten
 Jeanie Glenzer
 Margaret Johnson

President
 Vice-president
 Recording secretary
 Corresponding secretary
 Treasurer
 Pan-hell representative
 Historian
 Press representative

SECOND SEMESTER

Joyce Rathke
 Nelda Dopp
 Bess Jones
 Kay Hansen
 Dorothy Davids
 Lucille Wishlinski
 Dolores Rondeau
 Joan Joosten

MEMBERS

SENIORS

Dorothy Davids
 Dolores Rondeau
 Jeanie Glenzer
 Doreen Short
 Audrey Short
 Helen Lundgren
 Lucille Wishlinski
 Joan Joosten
 Margaret Johnson
 Arlene Semanko

JUNIORS

Betty Haberkorn
 Grace Lepak
 Joyce Rathke
 Clara Winter
 Mary Murphy
 Doris Johnson

SOPHOMORES

Bess Jones
 Nelda Dopp
 Monica Gill

FRESHMEN

Mary Juetten
 Mary Due
 Jeanne Cone
 Mavis Dumdei
 Kay Prey
 Evelyn Markwardt
 Caroline Krogness
 Patricia Thorpe
 Phyllis Harrington
 Doris Karner
 Doris Ockerlander
 Eileen Leiby
 Jean Markee
 Jean Woltman

Betty Ruth Crawford
 Lucille Tosch
 Helen Nigbor
 Dolores Lepak
 Dorothy Loberg
 Betty Kunde

HONORARY MEMBERS

Miss Mildred Davis
 Mrs. William C. Hansen

FACULTY ADVISERS

Miss Gladys Van Arsdale
 Miss Helen Meston
 Mrs. Mildrede Williams

PATRONESSES

Mrs. Ernest T. Smith
 Mrs. Frank N. Spindler
 Mrs. George Berg
 Mrs. Robert Lewis



Tau Gamma Beta, the oldest Greek society on the campus, enjoyed celebrating its thirty-fifth anniversary last fall at a homecoming banquet. Active leaders in all phases of college life, the Tau Gams have maintained high standards both socially and academically.

Each semester the Jean Mailer scholarship pin is formally presented to the sorority girl who has the highest scholastic average. The proud wearers of the pin for the first semester of this year were Nelda Dopp and Irene Mork and for the second semester, Doris Ockerlander.

Last year the Tau Gams sponsored a harvest ball which was very similar to homecoming dances of former years. For the victory carnival they put on a humorous skit called "This Ain't The Army". The Tau Gams also purchased and maintained a picture case for snapshots of CSTC students serving our country in the present war.

Members of Tau Gamma Beta take part in many school activities and several are in the honorary fraternities. In Alpha Kappa Rho are Joan Joosten, first semester secretary, Joyce Rathke, first semester vice-president, and Dolores Rondeau, first semester treasurer and second semester vice-president. In Sigma Zeta are Bess Jones and Betty Haberkorn and in Sigma Tau Delta, Dorothy Davids. Tau Gam leaders in other groups are Joyce Rathke, YWCA; Bess Jones and Nelda Dopp, WAA; Dolores Rondeau, Bess Jones, Arleen Semanko, and Joyce Rathke, Nelson Hall Council.

Tau Gamma Beta



Omega Mu Chi

OFFICERS

FIRST SEMESTER

Kathryn Kenney
Audrey Priem
Shirlee Tobias
Marlys Reed
Edythe Ofstun
Marjorie Stimm
Rose Marie Howes
Gertrude Heike
Betty Pohlman

President
Vice-president
Recording secretary
Corresponding secretary
Treasurer
Pan-hell representative
Press representative
Chaplain
Historian

SECOND SEMESTER

Shirlee Tobias
Edythe Ofstun
Ellen Gordon
Kathryn Hope
Gertrude Heike
Kathryn Kenney
Lucille Vaughan
Betty Pohlman
Helen Jacobson

MEMBERS

SENIORS

Shirlee Tobias
Kathryn Kenney
Betty Brooks
Gertrude Heike
Audrey Priem
Betty Pohlman
Joyce Connor
Rose Marie Howes
Edythe Ofstun

SOPHOMORES

Helen Jacobson
Kathryn Hope
Dorothy Jenkins
Ruth Ruff
Janice Milton
Dolores Cowles

FRESHMEN

Janet Benn
Clarice Bergen
Patricia Nelson
Dolores Schulist
Gloria Heimbruch
Betty Hougum
Lorraine Peters
Joyce Proctor
Dolores Jelinek

HONORARY MEMBERS

Mrs. Harold Tolo
Mrs. Erwin Schwahn
Mrs. Leland Burroughs

FACULTY ADVISERS

Miss Syble Mason
Miss Bertha Glennon
Mrs. Mary Samter

PATRONESSES

Mrs. Carl N. Jacobs
Mrs. Earle Kidder
Mrs. Palmer Taylor
Mrs. Charles Cashin

JUNIORS

Ellen Gordon
Marjorie Stimm
Lucille Vaughan
Marlys Reed
Alice Klake



Founded in 1926, Omega Mu Chi sorority has grown in its 19 years, and has become one of the foremost social organizations on the campus.

Each year the Omegas give a fall tea, a style show, and a card party. Last year, in addition to these main events, the sorority organized a shopping service for the army and put on a show, "The Gay Nineties Revue," for the victory carnival.

Each semester Omega Mu Chi honors the pledge having the highest scholastic average by the presentation of a scholarship pin. First semester, Lucille Vaughan merited the pin and second semester, Patricia Nelson.

The Omegas take an active part in many extra-curricular activities. Betty Pohlman is president of the Student Council and Pat Nelson is vice-president. Other members in the Student Council are Alice Klake and Lorraine Peters. Kathryn Kenney is business manager of the Iris. Edythe Ofstun is president of the senior class and Betty Pohlman is treasurer. Lucille Vaughan is the president of the sophomore class, and Joyce Proctor is vice-president of the freshman class. In the honorary fraternities are Ellen Gordon, Marge Stimm, Edythe Ofstun, Gertrude Heike, members of Sigma Tau Delta; Dolores Cowles and Marge Stimm, Alpha Kappa Rho. In College Theater are Betty Pohlman, Gertrude Heike, Marge Stimm, and Edythe Ofstun.

Omega Mu Chi



Nelson Hall



Again in 1944 and '45, Nelson Hall has been a "home away from home" to the girls who have spent a happy year there together.

One of the teachers of CSTC is wont to say, "It is amusing to watch the girls arrive in fall with their arms full of numerous and awkward bundles. But it is even more amusing to watch the procession in spring as they leave, struggling to carry with them a heterogeneous collection of everything that will not fit into a suitcase."

For what girl who has spent a year at the Dorm has not added to her possessions many souvenirs of the enjoyable times she has had there.

The Dormites are a gay lot, and on Friday and Saturday evenings, when "quiet hours" are waived, the Hall resounds with laughter and song.

The Dormites began their social calendar for 1944-45 with a picnic at Iverson Park. Several parties were enjoyed by the group during the year. In November, a Thanksgiving dinner was served, and a formal banquet preceded the CSTC Christmas concert in December. A mother and daughter banquet was held in May.

Democracy is the rule, and the girls govern themselves through a group of elected representatives. The Dorm council is headed by the president, Gerry Walters. House meetings are held once a month, and serve as a clearing house for complaints and suggestions.

Miss Rose Barber, director of Nelson Hall, is a graduate of the University of Wisconsin. She first came to the Dorm in 1942, when she served as dietitian of Nelson Hall Barracks for the 97th College Training Detachment, Air Corps, and continued there as director with the return of the girls to the dormitory in the summer of 1944.

Nelson Hall



Student Council



Despite the low enrollment at CSTC, the 1943-45 Student Council has continued to be active. As was natural in the present war, many of the Council's activities have centered around war projects.

Every Tuesday was set aside as war stamp day and war stamps were sold from a gaily decorated booth on the second floor. During the Sixth War Loan drive in the autumn of 1944 the Council sold both stamps and bonds at any time during the school week.

In the spring of 1944 the Council sponsored a Victory Carnival, which had for its purpose the selling of war stamps and bonds. A large number of both stamps and bonds were sold at this carnival.

The Student Council also assisted the faculty committee in charge of CSTC's golden anniversary celebration in June of 1944.

Officers of Student Council for the year 1944-45 were: Betty Pohlman, president; Rose Marie Howes, secretary-treasurer; Kay Hansen, secretary; Marjorie Stimm, publicity manager; and Bob Cashin, assembly chairman. Second semester, Patricia Nelson was elected to fill the vacancy left by Rose Marie Howes, who left CSTC in January, 1945, to accept a teaching position.

W. A. A.

"Sports for all and all for sports." That is the motto of WAA, and the Waa's have done much to uphold this motto. A peppy group is the Women's Athletic association. Its aims are to promote sportsmanship, to encourage interest in sports, and in so doing to raise the standards of women's athletics. This group is affiliated with the American Federation of College Women, a national organization.

The sports are scheduled according to their seasonal aspect. Fall features hiking and archery, while winter sees volleyball, basketball, table tennis, and shuffle board. In spring

the Waa's thoughts turn to tennis, archery, soft ball and other outdoor games. The game room is headquarters for all Waa activities.

First of the year's activities was an outing to Iverson Park. A Christmas party was held and the group sponsored a Christmas Cheer program in the Union. Officers of the organization are Bess Jones, president; Nelda Dopp, vice-president; Alice Johnson, secretary-treasurer; and Kay Hansen, press representative. Miss Myrtle Spande is the organization's able and popular faculty adviser.

Naomi Barthels
Geraldine Clark
Jeanne Cone
Dolores Crueger
Esther Davidson
Emma De Canter
Nelda Dopp
Mary Due
Mavis Dumdei
Isla Erickson
Barbara Felker
Phyllis Harrington
Kay Hansen
Dolores Jelinek

Alice L. Johnson
Alice R. Johnson
Bess Jones
Doris Karner
Sylvia Keleshek
Joan Kelley
Lucille Lemsky
Dorothy Loberg
Elizabeth Maki
Jean Markee
Gertrude Marshall
Beulah McConley
Irene Mork
Patricia Nelson

Eleanor Ofstun
Ethelyn Olson
Kay Prey
Joyce Proctor
Lu Ruff
Gloria Rybicke
Virginia Sawyer
Arlene Semanko
Imogene Sheibe
Pat Thorpe
Antoinette Tushinski
Jean Woltman
Elsie Zmuda



Basketball



Yes, Central State and its athletic coach, George Berg, had a basketball team this war year. Undaunted by the manpower shortage the Bergmen turned out to be a scrappy little team. While never having more than 10 men the squad played a hard fast game of ball, laying four of their five opponents by the heels. Although none of the games was official conference basketball, play was as spirited as one would find anywhere in any conference setup.

Star player of the team was George Prihoda, guard, demon on long shots. His running mate, Don Vetter, was a dependable performer, and Howard Peterson was usually able to make the scoring column. Matt Martens and Bob Cashin, guard and center, also bulked large in the scoring department.

Other mainstays were Lloyd Anderson, Jack Jenkins, Bernard Mozuch and Bill Mellin. All of the boys on the team were Freshmen.

In their first game the Bergmen laced St. Norbert's 28-21 at DePere and then beat them again to the score of 50-46 on Point's floor. The Pointers subsequently whipped Oshkosh 35-30, and Carroll 30-24, and dropped their lone game to Milwaukee Teachers, a bigger, more powerful aggregation, to the tune of 49-35. Only one of the games, St. Norbert's, was played on the Pointers' floor.

The team was disbanded in December when six of the 10 regular players enlisted in the United States Navy. Central State Teachers wishes these men all success in their new and bigger game. If team spirit counts for anything we know that these men will live up to the highest traditions of the United States Navy.

Basketball



LLOYD ANDERSON



BERNARD MOZUCH



JACK JENKINS



DON VETTER



GEORGE PRIHODA

Memories—Before The War



Autographs -

Autographs -

Advertising —

I wish to express my sincere appreciation to the business men of this community for the splendid way they have subscribed to the advertising section of this Iris, and also for the courteous and considerate attitude they always extend to the college students in general.

KATHRYN KENNEY, Business Manager.

BREITENSTEIN CO.

Home Of

OLD CABIN COAL

Phone 57

217 Clark St.

Roofing, Siding, Paint, Plaster,
Cement, Nails, Farm Machinery,
Feed, Coal, and Coke.

JOERNS BROS.

FURNITURE CO.

Established 1889

Manufacturers of

Fine Contemporary and
Period Furniture

VALLEY SALES CO.

COMMERCIAL PRINTING

PARK RIDGE

TACKLE AND GUNS
ALL ATHLETIC
EQUIPMENT

JANTZEN BATHING SUITS

THE SPORT SHOP

POINT SPORTING
GOODS COMPANY

STEVENS POINT BEVERAGE CO.

POINT SPECIAL AND
AMBER PRIZE BEER

ALSO BOTTLERS OF
Orange Crush, Lemmy, Cleo Cola,
and other High Grade Soft Drinks

STEVENS POINT'S PURE WATER
used in all Beverages

Phone 61

Campbell's
STEVENS POINT, WIS.

READY-TO-WEAR

JACK AND JILL SHOP

HOME FURNISHINGS
DRY GOODS

VETTER MANUFACTURING COMPANY



Phone 87
for
BETTER LUMBER
and
MILLWORK



★ Give wings to hope...
**SUPPORT
 THE RED CROSS!**

HOPE LIVES in the hearts of loved ones left at home by fighting men . . . hope for victory . . . hope that the absent one will return safely . . . and hope that all will be done that can be done to ease for him the tremendous burden of war.

The Red Cross, born in the heart of humanity, has become a universally honored symbol that sustains that hope—and fulfills it by countless acts of mercy . . . ministering to the wounded with transfusions of life-saving blood plasma in the midst of battle . . . providing food and comfort for our boys who are prisoners of war . . . recruiting and teaching nurses . . . maintaining contact between men in all branches of service and their folks at home.

In these and many other ways,

the Red Cross is working ceaselessly to relieve the suffering, privation, and loneliness caused by war—and is still ready, as always, to give prompt aid to victims of devastating floods, train wrecks, fires, and other public catastrophes.

The Red Cross has no funds to carry on its magnificent work save that which we and our fellow Americans voluntarily provide. Must its great humanitarian task pause, or fall short, because we failed to give it the support it so vitally needs? Translate your answer into action: **GIVE MORE OF YOUR DOLLARS TO THE RED CROSS, NOW.**

FEDERATED HARDWARE MUTUALS
Hardware Dealers Mutual Fire Insurance Company, Home Office, Stevens Point, Wisconsin
Mutual Implement and Hardware Insurance Company, Home Office, Owatonna, Minnesota
HARDWARE MUTUAL CASUALTY COMPANY
Home Office, Stevens Point, Wisconsin
 LICENSED IN EVERY STATE

Hardware Mutuals

Stevens Point, Wis. ★ Owatonna, Minn. ★ Offices Coast to Coast

Compensation, Automobile and other lines of non-assessable
CASUALTY AND FIRE INSURANCE

**BOSTON
FURNITURE
And
UNDERTAKING
COMPANY**

Quality Furniture and Rugs
At Reasonable Prices

Established 1888
430 Main Street

OUR COMPLIMENTS

to the

CLASS of '45



COOK STUDIO

452½ Main Street

**NORMINGTON'S
DRY CLEANING
LAUNDRY**

Phone 380

Congratulations!
To The Graduates.

To Each Succeeding Generation of C.S.T.C. Students: This Has Always Been Your Home Away From Home. We Try To Uphold That Tradition.



COLLEGE EAT SHOP

Andy and Eva

Compliments of . . .

The WILSHIRE *Shop*

- SHOES
- GLOVES
- HOSIERY
- HANDBAGS
- SLIPPERS
- JEWELRY
- MILLINERY
- UMBRELLAS

Phone 828

440 Main St.

COMPLIMENTS OF

SORENSEN'S FLORAL SHOP

510 Briggs Street
Stevens Point, Wis.

THE

HOTEL WHITING



HEADQUARTERS
FOR
PARTIES AND DANCES

COMPLIMENTS OF

A. L. SHAFTON & CO.

Wholesale

Stevens Point, Wisconsin



**FAIRMONT'S
ICE CREAM**

The Peak of Quality

For Every Financial Service
See Your Bank

Checking Accounts

Savings Accounts

Mortgage Loans

Business Loans

Personal Loans

Money Orders

THE FIRST NATIONAL BANK

Stevens Point

Capitol and Surplus \$325,000

Member F.D.I.C.



Hotter Than Sunshine

COPPS COAL

141 Main St.

Phone 22



The COPPS COMPANY
STEVENS POINT — MARSHFIELD — MEDFORD — MERRILL



COMPLIMENTS OF
DELZELL
OIL
COMPANY



COMPLIMENTS OF
THE

**STEVENS
POINT
DAILY
JOURNAL**



PERMANIZED BONDS, LEDGER
AND THIN PAPERS — KEEBOARD
TYPEWRITER PAPERS — ARE
MANUFACTURED EXCLUSIVELY
BY THE

WHITING-PLOVER PAPER CO.

Stevens Point, Wisconsin

All the folks at the "Drive" extend their good
wishes to the Class of 1945

THE STEVENS POINT PLANT
OF
THE FOUR WHEEL DRIVE
AUTO COMPANY

The world's largest exclusive builders of
four wheel drive trucks.

**WELSBY'S
DRY
CLEANING**



Phone 688

"Known for Good Food"

POINT CAFE

LUNCHES, DINNERS



Private Parties by Appointment

MOST

POPULAR



IN

CENTRAL

WISCONSIN

COMPLIMENTS OF
OTTERLEE'S



COMPLIMENTS OF

HANNON-BACH

Pharmacy



The Best in
Drugs—Stationery—Gifts
Lunches—Sodas

Congratulations
and
Best Wishes
to the
Graduates!



TAYLOR'S DRUG STORES

Downtown South Side
109-111 Strong's Ave. 752 Church St.
Stevens Point, Wis.



FURNITURE
CORPORATION

Stevens Point, Wisconsin

Fine Furniture for Children
Since 1897

Iris Boosters

ALTENBURG'S DAIRY

BELMONT HOTEL and CAFE

HELEN FIEREK, Millinery and Accessories

FISHER'S DAIRY

GAMBLE STORES

GOODMAN'S JEWELERS

KENNEDY STUDIO

FRANK G. LASECKE AGENCY

LEROY'S

J. C. PENNEY CO.

POINT BAKERY

THE QUALITY STORE, Ladies Ready to Wear

SMART SHOP

STEVENS

J. A. WALTER, FLORIST

WESTENBERGER'S DRUG STORE

MONTGOMERY WARD CO.

COMPLIMENTS OF

NIGBOR FUR COAT COMPANY

Wisconsin's Largest Furriers

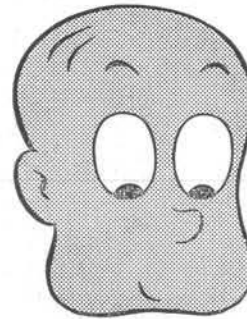
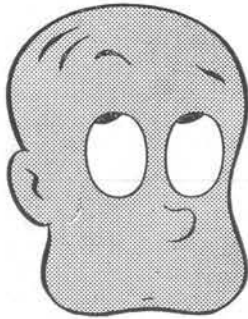
Milwaukee
Berlin
Wausau
Green Bay
Stevens Point
Madison

COMPLIMENTS OF

CHURCH'S PLUMBING



The high cost of living



The low price of electricity

Look at the cost of living—UP 25.4% since 1939.* Then look at the cost of electricity
—DOWN 3.2% during the same period.*

* Both figures from U.S. Bureau of Labor Statistics.

WISCONSIN **Public Service** CORPORATION

As your Engraver, we wish to Congratulate the Staff, Faculty and Class of '46 for the splendid cooperation given us in working for the Success of this book.

WISCONSIN ENGRAVING CO.

Compliments of

**THE
CONTINENTAL**



YOUNG MEN'S CLOTHES

Compliments of

**CITIZENS
NATIONAL
BANK**



HEADQUARTERS
FOR SAVINGS

for Gifts of Glamor
give

Stationery
that is different

**Woodland Notes
C. S. T. C.
College Box**

Genuine etchings
reproduced from the
original sketches by
Mildred Davis

produced locally — sold nationally by
EMMONS-MILLER CO.
Stevens Point, Wis.

FINE CRAFTSMANSHIP

in our well equipped plant assures you of a well planned and well printed publication.

EFFICIENT SERVICE

which to us is ON-THE-SPOT service at all times during the planning and production of your books reduces the usual yearbook worries and problems to a minimum.

PLEASANT RELATIONS

built up through many years of collaboration and our thorough knowledge of your yearbook problems makes working together a very pleasant experience.

Add to these, the fact that we all take a special interest in the annual of our own Alma Mater and you can appreciate why we try to give an extra measure of quality and service to the Iris.

WORZALLA PUBLISHING COMPANY

STEVENS POINT, WISCONSIN