

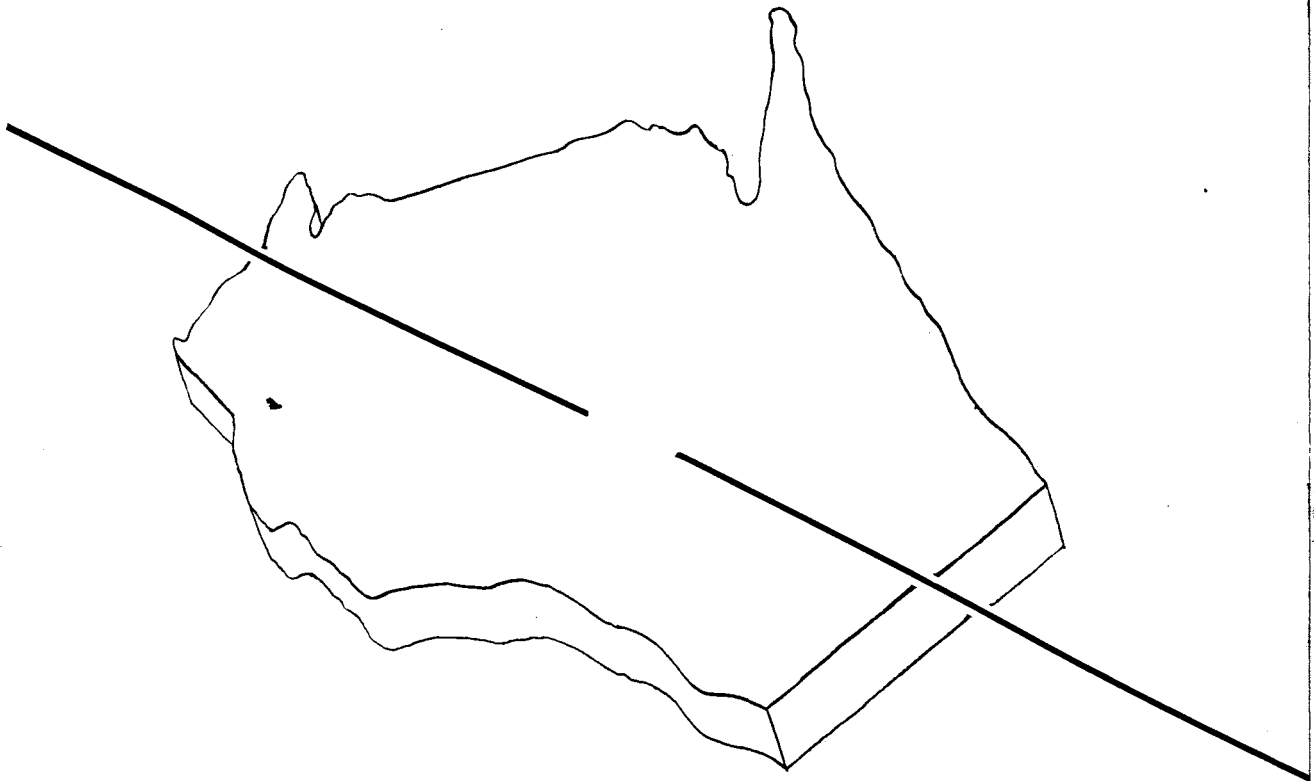
# IRIS



1950



# IRIS



# 1950

**Published By The Students**  
**of**  
**CENTRAL STATE TEACHERS**  
**COLLEGE**

**Engravings By Brock Engraving Co.**  
**Madison, Wis.**

**Published By Worzalla Publishing Co.**  
**Stevens Point, Wis.**

**STEVENS POINT**  
**WISCONSIN**

Kiel Hortonville Pelican Lake Butternut Nelsonville Warsaw, Poland

Rosholt Strongs Prairie Deerbrook Sherry

Augusta Marathon Grand Marsh

Wittenberg Watertown Oconomowoc Athens

Sayner Leopolis City Point Minocqua

Edgar Plymouth Berlin Laona Sheboygan

Neenah Colfax Marshfield Eagle

Tigerton Ladysmith Amberg Scandinavia

Oxford Grand Rapids, Michigan Westfield Blackwell

Mattoon Junction City Lake Tomahawk Vesper

Wautoma Colby Unity Granton

Almond Stratford

Godley, Texas Manawa

Rice Lake Abbotsford

Manitowoc Park Ridge

Richland Center Caroline

Custer Nekoosa

Knowlton Milwaukee

Bryant Waldo

Lac du Flambeau Gilman

Neillsville West Allis

Amherst Marion

Cashton Redgranite

Eau Claire Necedah Rudolph

Montello Chili Two Rivers Weyauwega La Crosse

East Chicago, Indiana Birnamwood Shawano Tomahawk

Peshtigo Jefferson Gillett Friendship

Park Falls Wisconsin Dells Iron Belt

Stoughton Madison Adams Wabeno

Dalton Kewaunee Bancroft Fond du Lac



<i>Racine</i>	<i>Brandon</i>	<i>Neshkoro</i>	<i>Merrill</i>	<i>Little Chute</i>	<i>Dancy</i>
<i>Auburndale</i>		<i>Marinette</i>	<i>Rothschild</i>	<i>De Pere</i>	
<i>Iola</i>	<i>Cecil</i>	<i>Wahiawa, Hawaii</i>		<i>Wisconsin Rapids</i>	
<i>Allenton</i>	<i>Portage</i>		<i>Munich, Germany</i>		<i>Bonduel</i>
<i>Coleman</i>					<i>Wrightstown</i>
<i>Lomira</i>	<i>Willard</i>				<i>Waupaca</i> <i>Evansville</i>
<i>Menasha</i>					<i>Eland</i> <i>Medford</i>
<i>Curtiss</i>	<i>Sparta</i>				<i>Pittsville</i> <i>Spencer</i>
<i>Greenwood</i>					<i>Port Washington</i>
<i>Crandon</i>	<i>Oregon</i>				<i>Kaukauna</i>
<i>Kewaskum</i>					<i>Antigo</i> <i>Elcho</i>
<i>Arpin</i>	<i>Poynette</i>				<i>Lodi</i> <i>Wild Rose</i>
<i>Star Lake</i>	<i>Mountain</i>				<i>Brokaw</i> <i>Mellen</i>
<i>Kenosha</i>					<i>Mukwonago</i>
	<i>Rib Lake</i>		<i>Gleason</i>		<i>Rhineland</i>
<i>Dorchester</i>	<i>Schofield</i>		<i>Clintonville</i>		<i>New London</i>
<i>Washburn</i>	<i>Jerusalem, Israel</i>	<i>Sturgeon Bay</i>		<i>Eagle River</i>	<i>Plover</i>
<i>Owen</i>	<i>Land-O-Lakes</i>		<i>Wausaukee</i>		<i>Amherst Junction</i>
<i>Oconto</i>	<i>Mazomanie</i>		<i>Blenker</i>	<i>Sheboygan Falls</i>	<i>Woodruff</i>
<i>Plainfield</i>		<i>Loyal</i>		<i>Hancock</i>	<i>Armstrong Creek</i>
<i>Shiocton</i>	<i>Little Suamico</i>		<i>Waukesha</i>	<i>Baraboo</i>	<i>Oconto Falls</i>
<i>Stevens Point</i>		<i>Green Bay</i>		<i>Port Edwards</i>	<i>Pulaski</i>
<i>Elderon</i>		<i>Hamburg</i>		<i>Mosinee</i>	<i>Princeton</i>
<i>Ashland</i>		<i>Phillips</i>		<i>Kennan</i>	<i>Menomonee Falls</i>
<i>Waupun</i>	<i>Crivitz</i>	<i>Soperton</i>	<i>Oneida</i>	<i>Wyocena</i>	<i>Brooklyn</i>
<i>Sister Bay</i>	<i>Ogema</i>	<i>Wausau</i>	<i>Gresham</i>	<i>Phelps</i>	<i>Coloma</i> <i>Beloit</i> <i>White Lake</i>

Representative — of your state, your county, your community — is Central State Teachers College. Each year a new class is received, and with that class new attitudes and viewpoints which are given to the school. The college, in turn, endows the student with characteristics it has received from its instructors and former students. The school could be described as a diplomatic community that receives and trains its ambassadors of good will, its representatives, and yours; students from Wisconsin. Trained to teach, and then returned to Wisconsin's schools to train the citizens of state and country. Those years spent here — spent working and playing together — are important years. The teachers for the state, from Central State, represent the citizens of Wisconsin. To those citizens this annual is dedicated.

# COLLEGE PRESIDENT



William C. Hansen

# AND - - - - - REGENT

Wilson S. Delzell



# OUR DEANS



DEAN OF MEN  
Herbert R. Steiner



DEAN OF WOMEN  
Mrs. Elizabeth Pfiffner



DEAN OF ADMINISTRATION  
Quincy Doudna

# ADMINISTRATIVE STAFF



Standing—Miss Carolyn Rolison, Sidone Andersen, Joanne Cerney, Sophie Cychosz  
Seated—Grace Pehoski

## *Hard at Work!*





# HEALTH SERVICE



Fred Marrs, M.D.



Mary Neuberger, R.N.

# AND MAINTENANCE

Regina Przybylski; Frank Mansavage; Lawrence Davis; Vernon Spence; John Rasmussen; Myron Haase; Victor Okray; Steve Skalski



A freshness of life, new ideas, added vigor, a spirit of youth in everything — freshmen. Strangeness, reception lines, mixers, social hours, teas, new friends, requested advice — a new way of life with busy hours.

This year came to mean, as once before, that the freshmen were living up to a tradition. They came to give us welcome spirit and support, with a strengthening of school loyalty. The religious organizations — Wesley, Newman, Gamma Delta, L.S.A., Canterbury, and Wayland, — were among the first groups to make these students feel at home. The Y.W.C.A., W.A.A. and intramural organizations also helped to assimilate our newcomers into the student body. The football team found recruits and made good use of them — and with football came Homecoming, and the freshman work and co-operation did much to make the grand event the big success that it was. Gradually this class formed itself into a recognizable, very welcome, very capable unit. As always, it was hard for them to adopt new methods of learning and study, but as time went by the freshmen became adjusted and the new processes became familiar — just as the freshmen became familiar to the school, a part of CSTC became a part of them.

# FRESHMAN



# DIVISION

# FRESHMAN CLASS



Top—Feit, D.; Schrank, J.; Roeber; Lewis, D.; Soule; Stadler; Laabs, Q.; Pionke; Janssen  
Middle—Green, E.; Morgan, D.; Nulty; Cherney; Botwinski; Gruen; Diestler; Hoffman; Tellock; Jarnick  
Bottom—Sandberg; Koehn, K.; English; Baker; Krueger, R.; Fechtner; Augustiniak

*. . . . the starting point  
of a college career.*



Top—LaMarche, G.; Burant; Hoppe; Benz; Lytle; Marik; Radtke; Schachtschneider; Zarton; Clayton; Vissers  
 Middle—Kruger; Landt; Woodman; Sarbacker; Rubin; Anderson, E.; Mueller, J.; Wittmann; Draeger; Rasmussen  
 Bottom—Robinson; Pfaff; McMahon; Zaske; Grueling; Way

Top—Raddant, M.; Ebachen, R.; Redmann; Marquard; Wesley; Saager; Ohnesorge; Bogaczyk; Facklam  
 Middle—Ruprecht; Dobbe; Ferry; Schewe; Pfeil; Paul; Gerber; Krueger, L.; Holm, E.; Schwartz  
 Bottom—Rothman, D.; Ferg; Chizek; Knuf; Clintsman; Mathis; Abrahamson; Allen



Top—Spencer; Goetz, J.; Reinke; Peirce; Nelson, B.; Holding; Hurlbut, S.; Weisbrot; Martin; Buchanan; Getlinger; Simonson, D.; Bartosz; Schulist

Middle—Derge; Searles; Felton; Shejman; Novotny; Hartleb; Schaefer; Murphy; Teetzen; Koehler

Bottom—Hong; Stankevich; Dahm; Steffanus; Pope; Achilles; Newhall; Pierre; Meister; Hansen, V.

Top—Jansen; Wilde; Wendorf; Hodgdon; Krbec; Johnson, Robert E.; Albers; Brewer, M.; Rush, L.; Lund, T.

Middle—Clark, M.; Kavanaugh; Artz; Duff; DeRouchey; Ziegler; Schwantes; Rickel; Elsen; Reinecke; Trauchen

Bottom—Fumelle; Crowns; Redmann; Marquard; Flint; Drechsler



Top—Hill; Krbec; Steele; Spaulding; Salvin; Leisman; Formella

Middle—Moll; Schmeeckle; Kampenqa; Watruba; Omernik; Cattnach, M.; Kranski; Attleson; Summers; Dabill; Curtis, E.; Traut

Bottom—Korpal; Knudson; Swan, Joe; Zei, P.; DeGuire; Popeck; Douglas, K.

Top—Lila; Oleson; Frizell; Sommers; Johnson, Russell; Krienke; Young, R.; Paulin; Knaut; Purchatzke; Kussman; Andrews, O.

Middle—Kearns, R.; Campbell, B.; Schonke; Connor, S.; Jennings; Skowronski; Hagen; Stecker; Wallner; Gertschen; France

Bottom—Neuman; Greunke; Johnson, B.; Lodzinski, F.; Bruha, J.; Hutchinson; Bruha, R.; Seidl



Top—Eisenberg; Anderson, E.; Thomas, W.; Kleeman; Olson, J.; Weinig; Peterson, Herbert; Kalkofen; Beck, W.; Bucks; Pinkerton

Middle—Mueller, B.; Ziearth; Lund, M.; Hummel; Witter; Ohrmund; Fischer; Hoeft; Koehler, C.; Kettner

Bottom—Polzin, J.; Smith, S.; Laska; Hurlbut, J.; Drew; Herman, L.; Tracy; Fritsch, C.

Top—Goodland; Bauman; Leahy, R.; Metcalf; Weber; Feiting; Malchow; Skowen; Swan, Joan; Zak

Middle—Slomann; Gilman; Leahy, K.; Altenburg, J.; Woodford; Lange, E.; Gorman; Smith, M.; Stoehr; Schwab; Wiegand

Bottom—Redfield; Pfiffner; Ciula; Trapino; Thorpe; Schwelke; Guth



# GAMMA DELTA



Row 3—Buttke; Fairbert; Young; Schachtschneider; Putzier; Storm; Yanke.

Row 2—Ihlenfeldt; Lange; Radichel; Mews; Yaeger; Kusserow; Luedtke.

Row 1—Rothweiler; Neumann; Gramse; Stecker; Knuf; Reinecke; Ruth Teetzen; Guenther; Krueger; Henderson; Gellinger.

Row 2—Dahnert; Mehne; Emmerich; Meister; Moll; Zimmerman; Raaths; Hummel; Sickler; Pastor Ludwig; Heiser; Marth.

Row 1—Zastrow; Gruling; Brenner; Severson; Schewe; Pfaff; Eichsteadt; Witter; Mayer; Reinke.

The Beta chapter of the national Gamma Delta association is a Lutheran student organization on the campus. Reverend F. W. Ludwig is the group's religious adviser and Vicar F. Drivola is his assistant. Mrs. Kerst is faculty adviser.

The group conducts one business and one social meeting a month. The social meetings include a candlelight initiation ceremony for new members, and a traditional Christmas caroling party.

The officers for the first semester were Ervin Yanke, president; Doris Zimpelmann, vice-president; Louise Oelrich, secretary; and Ralph Storm, treasurer. Second semester Gordon Fairbert, Betty Mehne, Norma Mayer, and Ronald Buttke took over these offices.



The Lutheran Students' Association on the CSTC campus is a member of the National Lutheran Council. Dr. Trytten is the faculty adviser; the spiritual adviser is Reverend Orvis Hanson, who is the pastor of Trinity Lutheran Church.

The 1949-50 year opened with a picnic at Iverson Park. The later meetings, which were held twice a month, were both devotional and entertaining. On January 26, Art Witalison stepped down as president and Carla Kruse was elected to that post. Richard Schmidt, Elizabeth Holm, and Robert Anderson were elected vice-president, secretary, and treasurer respectively.

In the fall, the association sent Robert Anderson and Richard Schmidt to the Land O'Lakes Regional Conference. The most important items on the agenda were the deputation visits to congregations for the purpose of acquainting them with the meaning and results of the work of the L.S.A.

## *Present Officials*

# L. S. A.

Top—Holm, E.; Kruse; Christian; Johnson, R.; Hubbard  
Bottom—Abrahamson; Thompson; Holm, J.; Marking; Hong





*Palm Sunday Breakfast*

## **NEWMAN CLUB**

### *Newmanites*

The Newman Club, Catholic organization on our campus, enjoyed a very successful and inspiring year. Their meetings, which were accompanied by various informative talks and social activities, were held at the Knights of Columbus Hall. Some of the functions were a pot luck supper sponsored by the Catholic Women's Club, traditional candlelight initiation ceremony, Christmas party, monthly group communions, Palm Sunday communion and breakfast, and a visit to St. Joseph's Academy.

Miss Monica Gill, a former CSTC student, and Miss Roach, faculty adviser, received membership to the John Henry Newman Honorary Society. Qualifications for this honor require outstanding service to the Newman Club.

Officers were president, Jerry LaFleur; vice-president, Rita Peabody; treasurer, Ray Skupniewicz; and secretary, Carol Collins. Rev. Stanley Chillicki is spiritual adviser.





*Wesleyan Leaders*

Wesleyans rotated in a whirl of activities. Its body kept enthusiasm within its members by sponsoring interesting meetings that provided speakers, devotionals, and after-dinner fun. To maintain direct contact with the church, members acted as deputation teams to conduct services at local parishes; others represented their organization at the spring and fall Methodist Student Movement conferences at Waukesha and Superior respectively. Wesley is affiliated with St. Paul's Methodist church and is represented in the Inter-Faith council.

Officers of the group are Muriel Neerhof, president; Ted Dowd, vice-president; Patricia Harrison, secretary; and Phyllis Jarnick, treasurer.

Mr. Epple and Dr. Lyness act as faculty advisers; and Rev. Jans Vander Graff is spiritual adviser.

# WESLEY

Row 5—Wiegand; Gruen; Mr. Epple; Leisman.

Row 4—Erdman; Holding; Clintsman; Butler; Blake; Pastor Hanson.

Row 3—Mrs. Epple; Schmidt, D.; St. John; Collum, L.; Neerhof; Sorensen; Harrison; Rothman, R.; Thirkill; Fox, C.

Row 2—Clark, B.; North; Pierce; Hennig; Fontaine; Jewell; Lawrie; Collum, G.; Newhall.

Row 1—Anderson, E.; Jarnick; Schadewald; Rasmussen, J.; Koehler, C.; Wallner.





# WAYLAND

4th row: Knickerbocher; Nyberg; W. Ruff; Zei  
 3rd row: Rodenhauser; Baaltz; Mrs. K. Nyberg; Mr. Crow  
 2nd row: Mrs. J. Zei; M. Schultz; J. Pickett; G. Simonous  
 1st row: N. Weber; N. Malchow; M. Cattanach

The Canterbury and the Wayland organizations are two new religious groups on the campus. Canterbury, the Episcopalian organization, is not a social group, but it aims through discussion to find out about Christianity. Wayland, affiliated with the local Baptist church, is a social group whose advisers are Mr. and Mrs. Crow.

## INTERFAITH COUNCIL

2nd row: Mr. A. Epple, adviser; Virginia Marros, Canterbury Club; Dorothy Thompson, LSA; Jack Zei, Wayland  
 1st row: Muriel Neerhof, Wesley; Carla Kruse, LSA; Pat Harrison, Wesley; Phyllis Mykleby, YWCA





Top—Miss Moser; Draeger; Jewell; Jennings  
 Middle—Fontaine; Schroeder; Evers; Rasmussen; Lawrie; Fink  
 Bottom—Clark; Harrison; Finch, M.; Henning; Oelrich; Mehne; Elmer; Holding

# Y. W. C. A.

## *Presiding Body*



The Y-Dubs of 1949 and 1950 set out to achieve their aims of promoting better friendship among the girls of different religions and of providing recreation and enjoyment for them.

One of their projects of the year was the sending of packages and gifts to foreign countries. Their most important social event of the year was the Sadie Hawkins' Day Dance.

The officers, who have done much to stimulate the growth of Y.W.C.A., are president, Phyllis Mykleby; vice-president, Harriet Henning; secretary, Rita Fontaine; and treasurer, Marge Finch. The adviser of this group is Miss Moser and Mrs. Hansen is the patroness.

Pep! That's the aim of the cheerleaders who have endeavored to transmit that feeling to the student body. The cheerleaders preside at all school games and at pep assemblies.

The officers are Nancy Sannes, acting president; Carol Gilbertson, secretary; and Dorotheanne Rebella, treasurer. The group's adviser is Miss Moser.

The club entered a float in the Homecoming parade and was on hand to cheer at the homecoming bonfire.



*Let's Cheer!*

## CHEERLEADERS

Top—Rebella; Sorensen.

Bottom—Rybicke; Kusserow; Sannes; Morris; Gilbertson, C.



# CHAMPIONS



Row 2—Karls; Kowalsky; Rusch; Laabs; Dehlinger; Laabs.  
Row 1—Krienke; Young.

Row 2—Kulick; Koehn; Potter; Lizon; English.  
Row 1—Douglas; Hutchison.

Row 2—Gilbertson; Brandt; Leichtenberg; Samelstad.  
Row 1—Steele.

Row 2—Wazenick; Specht; Bucks; Joswiak; Jelinek; Lorenzen.  
Row 1—Flynn; Andrews.

When the 1949 football season opened, Stevens Point was not considered a contender for the State Teachers Conference crown. After a spotty performance against Mission House, the Pointers proved their mettle by battling the highly regarded Semi-Pro Wausau Muskies to a 0-0 deadlock. They defeated their remaining opponents until they met Eau Claire. There on a wind swept field, a fickle wind which blew no point gave the Bruins a 14-13 win and the Pointers a tie with the La Crosse Indians and Stout Institute for the Conference Championship. The outstanding feature of the year's squad was their desire to win. Many times the boys came from behind to win. To a great team and greater group of boys we owe a salute and a tribute.



# STATE TEACHERS



Row 2—Scheel, Brunsmann, Stenz, Krbec, Hanke C., Lindow  
 Row 1—Zukoski, Paulsen, Plankuch



La Fleur, Mr. Quandt, Hansman



Lecklem, Gaulke, Kock, Fick, Sanks

## BOX SCORE FOR THE 1949 SEASON

Stevens Point	— 21	.....	Mission House	— 0
Stevens Point	— 0	.....	Wausau Muskies	— 0
Stevens Point	— 14	.....	Milwaukee	— 7
Stevens Point	— 13	.....	Eau Claire	— 14
Stevens Point	— 12	.....	Superior	— 7
Stevens Point	— 25	.....	Platteville	— 8
Stevens Point	— 40	.....	Oshkosh	— 13
Stevens Point	— 20	.....	Whitewater	— 15



*Lots of hard work  
Lots of good blocking  
Lots of good running  
and head's up ball,  
A championship team!*





## *The Game*

*Pre game tension in locker room*

*Here comes the team*

*Victory Huddle*

# HOMECOMING ROYALTY



*Captain . . . Jim Koehn, Queen . . . Marge Finch  
Court . . . Nancie Sannes, Carol Gilbertson,  
Joan Swan*

# HOMECOMING EVENTS



## *Hilarious Hobos*

*L. S. A. 1st. Prize*

*Faculty Foolishness*

*Hobo Dancers*

*The Big Night*



Row 3—Brunzman; Johnson; Havitz; Lund; Pinther; Polzin; Wagner; Bliese; Olsen.

Row 2—Veselak; Kohta; Dehlinger; Polka.

Row 1—Scheel; LaFleur; Leklem; Berndt; Potter; Garska.

Row 2—Curry; Lorenzen; Lizon; Specht; Case; Steele; Christenson; Bart; Samelstad; English; Laabs; Gaulke.

Row 1—Leichtenberg; Jelinek; Hanke; Koehn; Koch; Mr. Crow.

## THE "S" CLUB



Top—Radichel; Wallner; Kampenga; Collum, G.; Schantz; Neerhof; Jacobson, Y.; Babcock  
 Middle—Morgan, D.; Green, E.  
 Middle—Thompson, M.; Obinger; Nulty; Platt; Peabody; Gilbertson, C.  
 Bottom—Trapino

## W. A. A.

*Fun for all!*

This year the Women's Athletic Association began a new program of organized and individual sports for its members. In order to receive an award for sports played, a girl is given points for the number of hours that she participates.

Each sport, such as basketball, volleyball, softball, and bowling, has a sports head who organizes squads for games.

This year's officers were Carol Radichel, president; Bonita Babcock, vice-president; Carol Mews, secretary; and Beverly Berg, treasurer.

Each year W.A.A. invites the faculty and student body to come in and be refreshed at its Christmas Cheer held in the student lounge. Selling pom-poms and refreshments for homecoming makes the members of the W.A.A. feel that they have a part in the association.

Miss Levin acts as the group's adviser.





Top — Campbell, H.;  
Bartelt; Clayton; An-  
drews, R.

Bottom—Creed; Berndt,  
D.; Andrews, O.



Top — Rude; Campbell,  
H.; Szymanski, R.;  
Nikolay

Bottom — Szymanski,  
W.; Bartelt; Boneske

## INTRAMURALS

The intramural program, under the able direction of Mr. Berg, showed a high participation record and a still higher interest. Mr. Berg presented a well balanced program with touch football, basketball and volleyball heading the list. Accuracy basketball shooting tournaments, ping pong, and horseshoe were included to keep the program in motion. The men of Central State wish to extend their appreciation for the hard work and for the time that was given to the program by Mr. Berg.





Top—Hodgdon; Polzin J.; Mr. Hicks; Mayek; De Guire  
Bottom—Rhode; Menzel; Scheel; Rude; Hohensee

*Golf*



Christenson; Benson; Case; Douglas, K.; Korth, E.;  
Eves; Johnson, R. H.; Bart

*Tennis*

# SPRING SPORTS

*Track*



Top—Dibbel; Kalkofen; Havitz, A.  
Bottom—Polzin, E.; Krbec; Stewart; Fumelle; Green; Freier; Andrews, O.; Albrents; Sandburg; Lorenzen

Part of the freshman spirit was there — with a new thin covering of acquired wisdom shining for all to see. Sophists — pretended wisdom — with their strength still to prove. Second year students — they belonged to a group that had become accustomed to the Central State way of life. Some of the upper class polish had rubbed off on them — they had some of the know how — some of the tradition, — and they were rapidly acquiring the final touches. This class was more settled — some of their problems had been solved. Minds were made up about ideals, ambitions and future work. Those who were undecided about the future usually made their choice during this year; it was time for them to settle down to a certain area of concentration. They became more serious, and yet at the same time their familiarity with the school made them seem happier and more satisfied.

The sophomore knew and took part in many of the activities of our school life. Many of the fraternity and sorority pledges came from this class. Their class had been cut in size from the year previously and this year it functioned more smoothly, with more efficiency. Class pride began to show itself — as indeed it should.

# SOPHOMORE



# DIVISION



Top—Schneiders; Buttke; McCandless; Bahr, L.; Fox, F.; Konopacky, D.; Mallow; Cable; Segawa; Schraufnagel; Marks; Censky; Lundquist

Middle—Nikolai; Laszewski, R.; Johnson, Robert H.; Korth, M.; Collum, G.; Held; Altenburg, A.; Knope; Crosby; Phe'an; Jacobson, S.; Chick; Schoff, H.

Bottom—Greathouse; Christenson; Leach, B.; Faust; Humphrey; Worzalla; Shelley; Pedawiltz; Simonson, R.; Borchardt; Schmidler

Top—Storm; Fritsch, J.; Wazenick; Hyer

Bottom—Lang; Holstein; Holm, J.; Boehme; Winter



Top—Post; Polka; Turzenski; Tenley; Roseth; Zukoski; Mayer, M.; Skupniewicz J.; O'Brien; Green, C.; Van Hecke; Kellogg; Lewis, R.; Varney; Feigley; Schulz; Matuszak

Middle—Dehlinger, R.; Kosbab; Trzebiatowski; Byrne; Benjamin, J.; Lensmire, M.; Colvin; Yaeger; Jensen, D.; Boote; Rebella; Pfankuch

Bottom—Long; Sorensen; Elmer, Lester; Hall, R.; Eves; Swetz; Brill; Gulbins; Skupniewicz, R.

Top—Carpenter; Brown, B.; Case; Nyberg; Woltman; Fairbert; Christian; Heiser; Butler; Dipple; Eagleburger; L.; Marsh; Krueger; Specht; Edwards; Shepherd; Jelinek

Middle—McMillan; Plainse; Phillips; Berger; Jones, T.; Severson; Thompson, D.; Schroeder; Craig; Hoglund; Sbertole, E.

Bottom—Cattanach, J.; Thomson; Sickler; Moede; Piekarski; Schrank, D.; Burns

# STUDENT COUNCIL



## *Sign Contest*

The CSTC governing body is its student council made up of representatives chosen by the student body — four from each of the classes and one from each of the divisions. The council appoints committees for allocation, athletics, the bus, social functions, and conducts student elections.

Each year the council sponsors the fall Homecoming; it presides over the hobo assembly, the Friday night bonfire, the parade, and the festivities at the game.

John Kowaleski is the council's capable president; Joann Kenny is its secretary.

The council sponsors after-game dances, and this year conducted a contest in which students were asked to submit an emblem for our college.

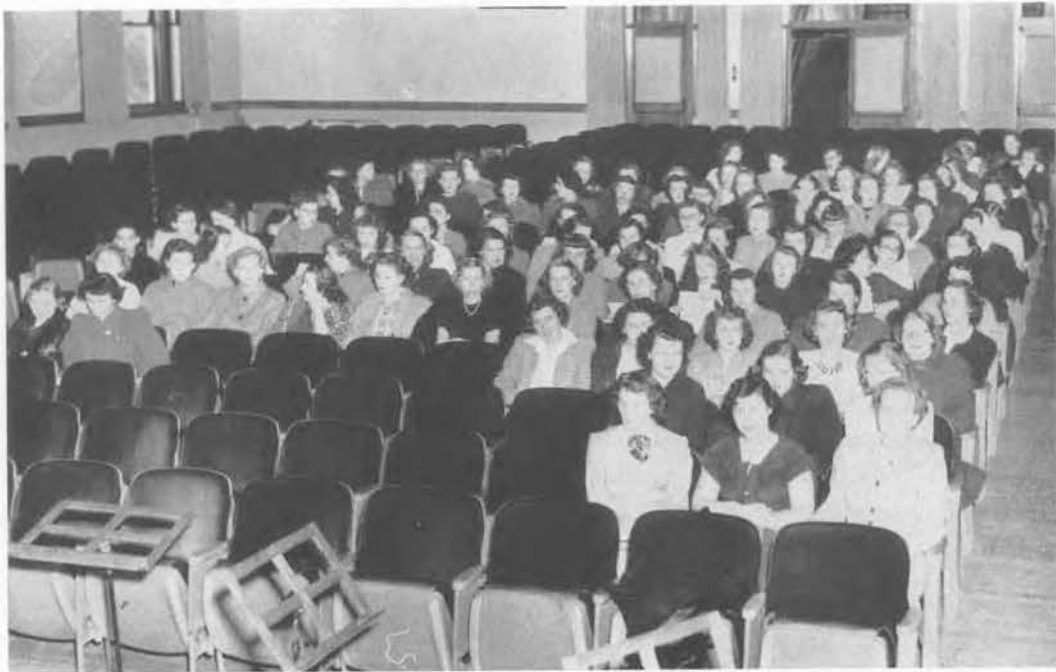
Mr. Boylan is the faculty adviser for the group.

## *Student*

Top—Kowaleski, J.  
Middle—Johnson, H.; Yonash; Lorenzen; Mr. Boylan; Boettcher, Witalison  
Middle—Finch, R.; Clark, G.; Warner; Searles  
Bottom—Eagleburger, L.; Holstein; Van Hecke; Worzalla



# W. S. G. .A



## *Government*

The women of CSTC are united in a self-governing organization, W.S.G.A., which aims to give college women a voice in their own affairs. They plan an extensive program of social activities for the year, some for the benefit of the organization itself and others for the enjoyment of the whole school. A Fellowship Breakfast was given for all new students this fall. Other events were the Thanksgiving assembly, a banquet, and the state meeting of W.S.G.A.

The functions for this year were planned under the guidance of Mrs. Pliffner and Miss Moser; president, Joyce Kruger; vice-president, Mary Jane Buss; secretary, Roberta Henderson; and treasurer, Virginia Gmeiner. Second semester Roberta Henderson, Mary Douville, Louise Oelrich, and Nancie Goebel held the respective offices.

## *The Banquet*



# TAU GAMMA BETA



Top—Yaeger; Rebella; Peterson, G.; Emmerich; Bea; VanOrnum; Miss Van Arsdale; Barnes; Sisley; Mrs. Kerst; Byrne; Dahnert; Holm, J.; Collins; Peterson, P.  
 Bottom—Morris; Thompson; Williamson; Jones, M.; Lewis; O'Conner; Kasper; Babcock; Johnson, M.; Elmer; Mayer; Douville

Top—Buchanan; Moll; Abrahamson; Holm, E.; Newhall; Gruen; Jarnick; Dehlinger; Nelson, B.; Leahy, R.  
 Bottom—Pfiffner; Paul; Brenner; Leahy, K.; Schmeackle; Altenburg, J.; Baumann; Lund



# TAU GAMMA BETA

Using their individual talents, the Tau Gams strive to make their organization one of true friendships and of varied social activities. Because it can boast members representing all parts of the state, Tau Gamma Beta sorority becomes a melting pot from which originates new projects and ideas.

To become acquainted with the new women students and to renew old acquaintances, the Tau Gams held their fall tea in October.

During their pledging season held at Homecoming time this year, the Tau Gam "Muds" again sported long pink and blue ribbons with buttons to indicate the number of misdemeanors committed. First semester pledges were Romona Byrne, Mary Douville, Lila Elmer, Carol Emmerich, Jeanette Holm, Norma Mayer, Marjorie Myers, Dorothy Thompson, and Jean Yaeger.

An inter-sorority dance sponsored jointly by the Omegas and Tau Gams was one of the few affairs that gave a girl the opportunity to invite a fellow. The theme for the dance, "June in January" corresponded appropriately with the season — January.

First semester Tau Gam officers were Phyllis Kasper, president; Margaret Johnson, vice-president; Lola Van Ornum, secretary; Carol Collins, treasurer; and second semester Joan Winter, president; Bonita Babcock, vice-president; Carol Collins, treasurer; Barbara Bea, secretary.

Miss Van Arsdale and Mrs. Ubbelohde Ames were first semester advisers. Mrs. Kerst became Tau Gam adviser during the second semester.

Second semester pledges were Mary Pfiffner, Kay Leahy, Sylvia Abrahamson, Elizabeth Holm, Rosemary Leahy, Barbara Bauman, Maxine Buchanan, Joanne Altenburg, Barbara Nelson, Janice Gruen, Dolores Newhall, Joyce Moll, Bernice Dehlinger, Phyllis Gertschen, Wilma Schmeekle, Jean Brunner, Mary Lund, Marjorie Paul, Phyllis Jarnick.

## *Fall Tableau*



# OMEGA MU CHI

1949-50 was a wonderful year for the Omegas. Every social event from the fall tea to the senior party brought the members of Omega Mu Chi sorority closer in enjoyment, friendship and understanding.

The highpoint of the year was the inter-sorority dinner dance with its "June in January" theme. Other important activities were the Pan-Hellenic dances, the annual knitting bazaar, the Omega candy sales, the rushing parties and the pledge dinners. Homecoming time was full of excitement for the Omegas. Marge Finch reigned as Homecoming Queen, and their "Snowball" float won second prize in the parade. An alumni-pledge dinner also added to the gay weekend.

The seven "Flappers," pledges of the first semester, Isla Mae Friberg, Nathalie Hoglund, Jackie Jennings, Dolores Kosbab, Carol Mews, Ann Phelan and Nancy Sannes, made life surprising and fun for the actives during the three weeks of fall pledging. The second semester pledges, "Worms", were: Bette Artz, Letitia Brunner, Jean Dobeck, Virginia Fischer, Eleanor Hummel, Jane Mueller, Joyce Pinkerton, Jean Sarbacker and Carol Woodford.

Miss Glennon, who has been a loyal Omega friend and adviser for many years, was made an honorary member of the sorority at the first semester Pan-Hellenic dinner. The Omega Mu Chi faculty advisers are Miss Wright and Mrs. Samter.

The officers of the first semester were: Marjorie Kohler, president; Ruth Finch, vice-president; Gretchen Holstein, recording secretary; Mary Srhadewald, treasurer and second semester: Esther Berndt, president; Julie Dean, vice-president; Joan Fehrenbach, recording secretary; Mary Schadewald, treasurer.

## *Beauty and a Snowman!*



# OMEGA MU CHI



Top—Kohler; Kruger, J.; Mews; Finch, R.; Pierce; Bobbe; Mrs. Gotham  
 Bottom—Hall, J.; Schadewald; Berg, B.; Phelan; Knope; Gmeiner; Berndt, E.; Kenney  
 Top—Miller, A.; Dean; Friberg; Robertson; Goebel; Høglund; Jennings; Kromroy  
 Bottom—Offerdahl; Crosby; Chappell; Tibbetts; Swanke; Kosbab; Fehrenbach

# CHI DELTA RHO



Row 2—Joanis; Kohta; Eagleburger, L.; Smiley.

Row 1—Aschenbrenner; Nelson, G.; Humke, H.; Pliska; Sbertole, B.; Stenerson; Morgan, R.; Holm, N.; Rothman, R.; Cox, Wilmar; Berg, M.; Alberg

Row 2—Woltman; Hendricks; Witalison; Jelinek; Lorenzen; Veselak; Scheel

Row 1—LaLeike; Leklem; Furstenberg; Mead; Peterson, L.; Kowaleski, R.

# CHI DELTA RHO

In living up to their motto, "Character Demands Recognition", the Chi Delta Rho fraternity had a successful and prosperous year. The pledges of the year brought new friendships and talents into the group. Gary Nelson, Nile Woltman, George Mosey, Bernard Sbertole, Mel Berg, Gene Smiley, Fred LaLeike, Bill Joanis and Harold Humke became active the first semester. The second semester Robert Johnson, Marvin Johnson, William Cable, David Case, Kenneth Garska, Kirby Krbec, George Zukoski, John Mallow, Robert Flint, Leonard Rush, Roland Krueger, Donald Olsen, Alvin Long, and Frank DeGuire were seen around the campus wearing the traditional Chi Delt pledging head pieces, burlap underwear, cowbells, and carrying the paddles and red lanterns.

The 1949-50 social calendar was full for the Chi Deltas. The Pan-Hellenic dances, a Christmas party, all the Homecoming activities, a football dance, and many other social get-togethers made a year of fun. Very important in the events of the year were the Chi Delta Rho Conclave at Milton College and the establishment of an alumni paper.

Bernie Alberg, president; Everett Humke, vice-president; Harlan Stoltenberg, treasurer; and Kenneth Veselak, secretary were the officers the first semester. The second semester officers were: Dick Kowaleski, president; Maurice Mead, vice-president; Ed Furstenberg, secretary; Harlan Stoltenberg, treasurer.

The Chi Delta Rho faculty advisers are Dr. Tolo, Mr. Knutzen, Mr. Faust, Mr. Hicks, and Mr. Rightsell.

## *Scratchy, Boys?*



# PHI SIGMA EPSILON

The biggest event of the year for the Phi Sigma Epsilon Fraternity was the acquiring of the fraternity house on Normal Avenue. It served to weld the Phi Sig brothers into even closer bonds of friendship and fraternal brotherhood. They wish to be of service to the school by taking an active part in all activities in which they can participate. They attempt to further the scholarship of their members and to live according to their motto: "Honor, Truth, and Wisdom."

The Phi Sig Style Show, under the direction of Jim Whelihan and Jack Whitney, was the fraternity's largest and most ambitious activity. In the class elections Phi Sigma Epsilon succeeded in getting a number of their members elected. Their candidate, Marjorie Finch, was chosen Queen of Homecoming. The Phi Sig pep band also helped to make the homecoming a big success. The fraternity held an open house for alumni at their new house after the game.

The fall pledging season was completed with a dinner held at Kalka's Steak House. The ten new pledges were: Don Rush, Don Jaeschke, Gil Chick, Bob Okray, Bob Worth, Gene Polzin, Tony Whelihan, Lee Miller, Frank Schmidler, and Carl Brill. At this time Mr. Krempel was made a Phi Sigma Epsilon honorary member and adviser. The pledges, wearing the red bow ties the second semester were: Steve Bogaczyk, Patrick Love, Patrick O'Brien, Robert Rude, William Shinkan, James Wilkinson, Donald Pionke, Frank Wesley, Lucien Roy.

The officers of the first semester were: Mel Carlson, president; George Phillip, vice-president; Jack Whitney, secretary; Ralph Roberts, treasurer. The second semester officers were: Jim Whelihan, president; Walter Peterson, vice-president; Ralph Roberts, secretary; Charles Bruce, treasurer.

*Show of the year — Music and laughs!*



# PHI SIGMA EPSILON



Top—Christian, W.; Polzin; Gierl; Kitzrow; Phillip; Brewer, F.

Middle—Day; Okray, R.; Schmidler; Bruce; Roberts; Hemstock

Bottom—Cole; Karler; Jaeschke

Top—Christian, W.; Kumbier; Bogaczyk; Lane

Middle—Kowaleski, J.; Bowers; Brill; Petranek; Bestul; Whitney; Whelihan, R.; Rude

Bottom—Guzman; Shinkan; Mr. Krempel; Miller, L.; Peterson, W.; Westenberger

# PAN HELL



Beilke, R.; Alberg; O'Connor, K.; Kohler; Carlson; Gmeiner, Kasper

Carlson; Whelihan, J.; Winters; Berndt, E.; Kohler; Alberg; Kasper; Mead



This group consists of representatives from each Greek organization. Under the leadership of president Mel Carlson and secretary Katie O'Connor during the first semester and president Esther Berndt and secretary Maurice Mead during the second semester, it planned all Greek activities. The Council decides the pledging dates and rules, plans the Pan-Hellenic formals and acts as intermediary between the administration and the four Greek organizations.





*It's Hell* Week!

# PRIMARY COUNCIL



## *Professional*



# RURAL LIFE



## *Organizations*

The Rural Life Club members are proud of the fact that their organization is the oldest professional organization on the CSTC campus, being founded in the year 1914. The aims of the club are professional development, which increases their ability to handle the many problems of the rural school; personal development, which helps them to lead others as well as to follow; and social development, of which square dancing and choral singing are a big part.

During the first semester, Dale Sickler presided as president of the club; Claire Thomson held the office of vice-president; Frances Borek served as secretary; Alice Eichsteadt was treasurer. The second semester officers were Viola Hofer, Irene Luedtke, Eleanor Hummel, Warren Lensmire. Miss Roach, Mrs. Kerst and Dr. Doudna supervised the organization.



# ROUND TABLE



## *Intermediate and Upper Elementary*

The Round Table is the professional organization for students who plan to become intermediate and upper elementary teachers. It furnishes opportunities for students enrolled in these divisions to become better acquainted, and it gives Dr. Doudna, the director, a chance to take care of administrative matters for these divisions.

At the first meeting, January 23, Harlan Stoltenberg was elected president; William Plath and Carla Kruse were elected vice-president and secretary-treasurer, respectively. Dr. Doudna spoke to the group about second semester enrollment.

The officers planned the programs for the remaining meetings. The Round Table met frequently the second semester, subdivided into sections according to their year in school.

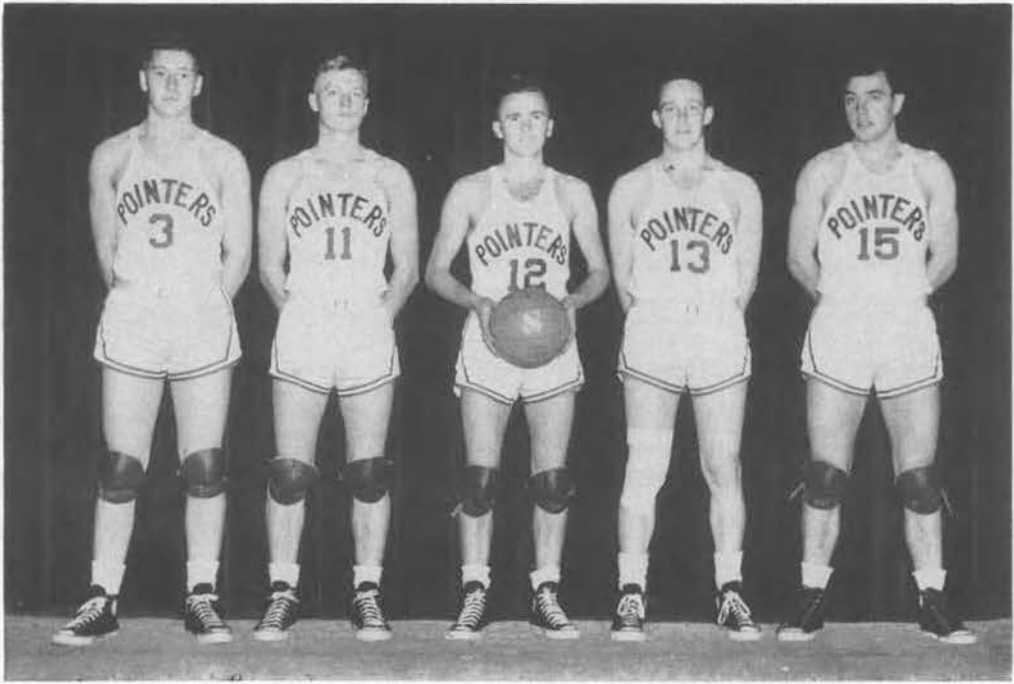
# FORUM



## *The Big Three*

The Forum, which is under the direction of Mr. Rightsell and Dr. Tolo, is organized to guide prospective teachers in the Secondary Division of Education. This year the junior high division was dissolved, opening that field to secondary graduates. The meetings consist of informative talks and discussions of problems which arise in connection with the Bachelor of Science Degree. This year's officers are president, Richard Lund; vice-president, Allen Braem; and secretary-treasurer, Ralph Roberts.





Dabareiner; Christenson; Polka; SameIstad; Lindow.



Lorenzen; Fick.



Polzin; Menzel; Conachen; Schneiders; Wagner

## BASKETBALL

The 1949-50 basketball season was as interesting, if not as successful, a season as might have been desired. The squad won 9 and lost 11 games for a .450 per cent average for the 20 game schedule. The style of ball played by the Pointers was interesting to true basketball fans. The play of the Pointers was with a purpose even though the end desired was not always achieved. The squad showed moments of clever and well conceived team work but consistency was lacking.

The Pointers played three conference games in which the pendulum of victory could have swung either way with fate choosing to swing the balance in favor of the opposition. The team just had a niche carved into the conference schedule, and then Gene Fick, first string center, left school at the close of the first semester. Coach Quandt then re-juggled his charges to find a new unit. When things were beginning to roll again, Don Schneiders was forced to the sidelines with a badly sprained ankle. This season's squad was composed of underclassmen, and they all are expected to be back in uniform next season. We wish them a good season in the coming year.



*"Tex, Get Off  
That Man's  
Back!"*

*My Hip?!  
Ref, I Never  
Touched Him!*





# DRIVER EDUCATION



"Something new has been added" to the CSTC curriculum this year in the form of a new 1949 Plymouth labeled Central State Teachers College Driver Training Car. Mr. Specht is in charge of the two courses offered — a two credit education course in driver training, and a no-credit course open to all students who wish to learn to drive.

*The  
Green Demon!*



# NELSON HALL



*Up on third*

*Card sharks*

*Christmas time*

Nelson Hall — filled with 113 coeds from all over Wisconsin — girls having fun at popcorn parties, formal dinners, bridge games and birthday dinners; or being serious with studies, council meetings and practice teaching plans. Everyone is at home and comfortable in the large and friendly dorm, managed by Mrs. Margaret Angel and Miss Edna Elstad. The officers of this self-governing group, the Nelson Hall girls, were: Arlene Kromroy, president; Margaret Johnson, vice-president; Dolores Kosbab, secretary; and Jeanette Holm, treasurer.

# NELSON HALL



*Directors  
Dorm Council*

*Busy Place  
In the Making*

*Within the Walls*

Upperclassmen — the third year class. It was at this stage that a studied casualness and an easy familiarity began to distinguish members of this class. It was only a matter of time now — one more year — and they would be the leaders. In this year many students took the first major step of their career. Majors and minors and division specialties were decided on — and selected courses were all laid out. Their work here was approaching the end. This class had come through most of the rough work — its edges were smoother and now it was marking time. The class unit was an efficient one — easy working — and it knew what was to be done and went ahead. The Junior Prom, and its preparations, showed that this class knew how to plan and work together. Social events, educational classes, and school happenings had become part of their common every day discussion. School life had become a thing to take for granted — graduation was a prospect of the not too distant future. You could tell a junior by his walk and his talk, his attitude toward school. He had sighted his goal and it was within his reach.

# JUNIOR



# DIVISION



Top—Greathouse; Martin; Nikolay; Harvey; Havitz; Braem; Kowaleski, R.; Furstenberg; Hendrick; Curry; Karier; McKinnon  
 Middle—Chappell; Neerhof; Marking; Dahnert; Jones, D.; Obinger; Zanella; Oelrich; Finch, M.; Mehne; Myers; Berg, B.;  
 Olson, Ruth  
 Bottom—Gmeiner; Whelihan, E.; Parkinson; Ellingson, Richard; Place; Mead; Garska; Bowers

Top—Lindquist; Lorenzen; Mosey; McDonald; Cook; Schoff, A.; Hanke; Davy  
 Middle—Bohl; Barnes; Henderson; Guentlner; Lasecke; Peterson, P.; Judy; Higgins; Schantz; Ruffing; Morris  
 Bottom—Baltz; Francis; Putzier; Andrews, R.; Dowd; Menzel



Top—Genrich; Olsen; Fontaine; Douville; Dehlinger; Swanke; Brunner  
 Middle—Goebel; Kusserow; Bea; Lappley; Elmer, Lila; Zimmerman; Warner, Bette; Emmerich; Domack  
 Bottom—Stewart; Fehrenbach; Tibbetts; Konop; Dobeck; Raathis

Top—Mayer, J.; Venn; Feit, R.; Benson, J.; Promen; Stevens; Gryniewski; Pliska; Conachen  
 Middle—Ihlenfeldt; Pierce; Precourt; Buss; Williamson; Hall, J.  
 Bottom—Johnson, H.; Peterson, L.; Barber; Schadewald; Dabareiner

# BAND



R. Anderson; B. Barnes; W. Beck; R. Bestul; N. Boehme; F. Brewer; H. Carpenter; J. Cherney; S. Connor; E. Dahnert; D. Douglas; R. Ebachen; J. Getlinger; B. Gilbertson; V. Gmeiner; H. Hemstock; P. Holding; C. Kellogg; C. Koehler; M. Kohler; C. Kruse; C. Lane; H. Marking; B. Mehne; W. Metzger; L. Miller; B. Mueller; B. Nelson; A. Olsen; G. Peterson; W. Peterson; T. Salvin; D. Stassel; D. Thompson; R. Toser; J. Tracy; F. Wesley; J. Whelihan; J. Whitney; F. Woodman.

The band, under the direction of Mr. Michelsen, radiates its influence to almost every corner of the state. Besides playing many concerts, it conducts a Band Clinic and a Band Homecoming every spring. You can be certain that

the band will be on hand to blow some pep into the spectators at almost every athletic event. Officers of the band are Walter Peterson, president; Harry Hemstock, vice-president; Beverly Barnes, secretary-treasurer.







Mrs. Michelsen; Mr. Michelsen; Miller, L.; Lane; Hemstock; Brewer, F.; Boehme; Barnes; Pierce; Peterson, W.; Miss Heel.

# ALPHA KAPPA RHO

## *Musicians All*

Centered within Alpha Kappa Rho, honorary music fraternity, are the music masters of our school. Its purpose is to recognize musical ability, to stimulate an interest in music, and to develop leadership among music students.

Members of the group, meeting every other Monday at Mr. Michelsen's home, discuss musical modes of the times and make plans for their radio programs.

Established on this campus in 1937, Alpha Kappa Rho annually presents an award to a senior woman who excells in popularity, leadership, scholarship, and good sportsmanship. Its greatest exertion is an annual Homecoming breakfast for the members and alums.

Officers of the fraternity are Carman Lane, president; Carla Kruse; vice-president; Nancy Boehme, secretary; and Lee Miller, treasurer.





Top—Joanis; Kromroy; Alberg; Berg, M.; Mead; Mr. Burroughs.

Bottom—Alderton, D.; Kowaleski, R.; Mykleby; Sisley; Wenzel; Robertson; Salter.

## ALPHA PSI OMEGA

"The show must go on", and it always does as the members of Alpha Psi Omega, the honorary dramatic fraternity, put forth their best efforts. Only those students who have shown outstanding abilities in the field of dramatics are qualified for membership in this fraternity. First semester they gained high acclaim with their presentation of a period comedy, Sheridan's *THE RIVALS*. Second semester the group presented Ruth Gordon's *YEARS AGO*. Alpha Psi also acted as host to high school people participating in the central state drama contests and debate tournaments here.

The officers for the first semester were president, Bill Joanis, and secretary, Phyllis Kasper. Second semester Ed Furstenberg became president; Fred Wenzel, vice-president; Phyllis Mykleby, secretary; and Donna Alderton, treasurer. Mr. Burroughs is faculty director.



Peterson, P.; Kosbab; Strand; Peterson, W.; Judy; Gruman; Salter; Robertson; McKinnon; Dehlinger, B.; Wenzel; Alderton, D.; Brewer.

## *The Rivals*

# COLLEGE THEATER PRODUCTIONS

## *Years Ago*

Top—Sbertole, E.; Alderton, D.; Kosbab; Berg, M.; Joanis  
Bottom—Douglas; Rebella; Robertson; Jacobson, S.



# SIGMA TAU DELTA



*Candlelight and Roses*

The new members of the Phi Beta Chapter of Sigma Tau Delta are initiated each semester at a very impressive candlelight ceremony which symbolizes the group motto of sincerity, truth and design. Membership in this fraternity is open only to those students majoring or minoring in English who have maintained at least a "B" average in that field and have shown outstanding abilities in creative writing.

The annual prose and poetry publication, "Words Worth", has changed its theme this year from one of strictly serious literary pieces to include some of a more humorous nature. Contributions for this magazine come from the members and the entire student body.

The fraternity officers are president, Jack Zei; secretary, Phyllis Kasper; and treasurer, Mary Bemowski. Mr. Burroughs is faculty director.



Top—Zei, J.; Berg, M.; Burch; Kasper; Carison  
Bottom—Collum, L.; Kenney; Alderton; Koehn, J.; Sisley

# SIGMA ZETA



Top—Kluck, D.; Vedder; Mr. Hicks; Furstenberg; Nikolai; Wenzel; Peterson, Harvey; Wedderkop; Berndt, R.; Creed.  
Middle—Dr. Trytten; Peterson, M.; Kenney; Bartelt; Griff; Cox, Wilbur; Brown, B.  
Middle—Garska; Precourt; Holstein; Morgan, R.; Braem; Holm, J.  
Bottom—Smiley; Sbertole, B.

## *Minds of Tomorrow*

To reward those who have demonstrated ability in the field of science and to encourage work in science is the purpose of Sigma Zeta, national honorary science society.

Interest in the local chapter is evidenced by the fact that the group this year is the largest since the war.

Sigma Zeta each year sponsors the Junior Academy of Science, sends representatives to the National Conclave, and presents an award to one of its outstanding members.

Bob Morgan, vice-president elect, presides as president in the absence of Elroy Gotter. Joann Kenney is historian.

Miss Allen, Dr. Trytten, Mr. Epple, Mr. Faust and Dr. Lyness are faculty advisers for the group.

Mr. Faust is the present National Recorder-treasurer.



# ALPHA KAPPA LAMBDA



Top—Lund; Gilbert; Ottow; Creed; Dippel; Peterson, B.  
Middle—Hubbard; Ellingson, D.; Parkinson; Nicodem; Helgerson; Hoppe  
Bottom—Lanigan

This year the newest department at CSTC, the Conservation Department, graduated its biggest class of eighteen members. It has grown fast in the past four years under the direction of Mr. Schmeeckle, Dr. Wievel and Mr. Sylvester. The department's one-hundred and two members have worked on many conservation problems in game management and forestry. The Izaak Walton League farm of three-hundred acres and other forest covered land has been used in their projects this year.

Various groups within the Conservation Department have taken many trips throughout Wisconsin to such places as the Fur and Game Farm at Poynette, the Forest Product Laboratory at Madison, and the Soil Conservation Station at La Crosse.

The Conservation Department strives to give its students a broad, extensive, and practical background of conservation methods to carry back to their home communities all over Wisconsin.

With "Save America" as its motto, the CSTC Conservation club, Alpha Kappa Lambda, has done much in the past year to make its organization a valuable, enjoyable and noteworthy addition to college life. Under the leadership of Gene Raddant, president; Dick Ellingson, vice-president; Allen Bowers, secretary; Bob Gilbert, treasurer; Bill Creed, press representative; and the faculty advisers, Mr. Schmeeckle, Mr. Sylvester, and Dr. Wievel, its membership is large and active.

Besides doing much serious conservation work, AKL members have had many activities full of fun. The big events of the 1949-50 season were the Annual Spring Smelt Fly, the Woodchoppers' Ball, the sponsoring of Joan Swan for Homecoming Queen, the Annual "Tea Social" and initiation at DuBay Sportsman's Lodge, and the Venison Steak Dinner at which the national secretary of the Izaak Walton League, Robert Beatly, spoke.



*Conservation*

*Thru Education*

*Woodchoppers Ball*

*Homecoming Float*



# MEN'S GLEE CLUB



M. Baker, G. Barber, D. Bliese, R. Brehm, J. Bruha, R. Bruha, W. Clayton, R. Cook, B. Davies, F. DeGuire, H. Drechsler, L. Elmer, P. Eves, G. Fairbert, D. Fechtner, R. Gilbert, D. Harvey, D. Hendrick, E. Heuer, N. Holm, W. Hong, R. Horn, E. Humke, H. Humke, B. Humphrey, J. Hurlbut, S. Karls, R. Karsten, W. Keough, W. Knutson, W. Koch, J. Kowaleski, R. Krueger, A. Kuefer, K. Kulick, B. Laabs, J. Luhm, L. Marko, G. Marks, E. McCandless, L. McKinnon, M. McMillan, J. Moede, A. Parkin, R. Peters, L. Peterson, D. Pfaff, J. Place, C. Poad, C. Polka, J. Popeck, R. Promen, R. Putzier, G. Quinnet, A. Redmann, R. Rothman, R. Schmidt, D. Schulz, G. Sorensen, G. Spees, D. Sprise, C. Strassburg, H. Stoltenberg, C. Torkelson, D. VanHecke, D. Varney, K. Veselak, C. Webster, E. Whelihan, P. Zei.

## *Men of Song*

The Men's Glee Club earned its favorite name "Ambassadors of Good Will" during the busy 1949-50 concert season. The twenty trips all over central Wisconsin and into northern Michigan brought CSTC to the attention of many music lovers and prospective students.

Singing such favorites as "The Wayfarer's Song" and "Evening" the club thrilled many audiences. Among their activities was a fall stag party at Iverson Park, which provided the members with an evening of fun and relaxation.

The group is directed by Mr. Knutzen, and starred such soloists as Norvin Holm, John Kowaleski, Wayne Salter, Paul Zei, and Carl Torkelson. Officers of the club were Ken Veselak, president; Robert Ellingson, business manager; and Roland Rothman, librarian.





S. Abrahamson, A. Altenburg, J. Altenburg, J. Colvin, G. Collum, J. Fehrenbach, M. Finch, T. Fink, J. Getlinger, N. Goebel, M. Held, B. Higgins, N. Hoglund, Y. Jacobson, J. Jewell, C. Kruse, D. Marth, N. Mayer, B. Mehne, A. Meister, M. Myers, B. Nelson, D. Newhall, M. Newton, G. Novotny, K. O'Connor, L. Oelrich, G. Peterson, M. Pfiffner, A. Phelan, N. Redfield, H. Reinicke, C. Rybicke, V. Schaefer, M. Schantz, F. Spencer, S. Swanke, A. Trauchen, B. Ziebarth.

## GIRLS' GLEE CLUB

In sweet refrain these female voices of CSTC sing out to the pleasure of their audiences. The annual Christmas concert, for which they worked diligently, was well worth the combined efforts. Revealing the true spirit of the Christmas season, they delighted a full house for two consecutive nights. Attired in colorful formals, they sang such favorites as "Ave Maria", "Rejoice Ye and Sing", "He Shall Feed His Flock", from the Messiah, and a final "Halleluia Chorus" in cooperation with CSTC's Mixed Chorus.

In May they again donned their formals in a concert for the Civic Music Convention. The numbers included "Deep River", "In the Still of the Night", "China Figure", and others equally entertaining.

Mr. Michelsen is to be complimented on his fine group, and credit also goes to the accompanist, Grace Peterson. The officers included: president, Betty Mehne; vice-president, Nancy Goebel; secretary and treasurer, Suzanne Swanke.



## MIXED CHORUS

Not too much is heard from the Mixed Chorus until Christmas when it blossoms forth in formals and tuxedos to sing strains of beautiful music at the traditional Christmas concert. The grand finale of the concert is the "Hallelujah Chorus" from "The Messiah" sung by the Mixed Chorus and accompanied by the orchestra.

The chorus, directed by Mr. Michelsen, is composed of approximately eighty men and women students who like to sing good music. Featured this year were popular selections "Bidin' My Time", "Lucky Old Sun", "The World is Waiting for the Sunrise", and "Cool, Clear Water", which were sung at the Band Homecoming in March.

Officers of the chorus are John Whitney, president; Richard Schmidt, vice-president; and Betty Mehne, secretary.

Grace Peterson is the accompanist for the group.



## RADIO WORKSHOP



This year the Radio Workshop of CSTC celebrated its tenth year on the air. Under the guidance of Miss Hanson, the staff and technical facilities were enlarged, and the weekly programs gained new highlights. A program of organ music was inaugurated featuring our talented students and faculty. Other programs included the Campus Varieties, a show of recorded modern music, college news, and interviews; the Book Corner, a program of children's stories; dramatic productions by the Workshop Players; the College Round Table, an informal discussion presented by students and faculty members; the Music Album highlighting the best in music.

The members gain valuable experience in working with the modern technical equipment and in directing and producing the plays and programs.

At Christmas a tea for faculty and members was held in the Workshop rooms.

# SOCIAL STUDIES CLUB



Top—Mr. Crow; Gurholt; Storm; Mr. Specht; Rodenhauser; Mittness; Redmann; Long  
Bottom—Witalison; Beilke, R.; Polzin, J.; Johnson M.; Aschenbrenner; Larsen; Cobb; Genrich; Hagen

## *At the Meeting*



The Social Studies Club of CSTC was organized to promote better relations and understanding among the social sciences through common meetings and programs. The faculty advisers, Mr. Specht, Mr. Crow, and Mr. Kremple, and the members, have made each meeting interesting and educational by including in the program either a movie, illustrated lecture, or a discussion of current problems.

Highlights of the year were two panel discussions with the Oshkosh Discussion Group, and a program with a guest speaker.

Officers during the first semester were: Don Sprise, president; Don Larson, vice-president; Alvin Long, secretary; and Ken Veselak, treasurer. Officers serving the second semester were Alvin Long, president; Alex Aschenbrenner, vice-president; Margaret Johnson, secretary; and Ralph Storm, treasurer.

# HOME ECONOMICS



The biggest affair of the Home Economics Club this year was the State Home Economics Convention held at CSTC.

The Home Ec Club is an organization of girls in the Home Ec division who like to get together once a month, see demonstrations, learn new things of interest, and prepare the gifts offered at their Christmas sale.

At the Chicago Province convention, Margaret Jones of CSTC was elected secretary-treasurer

of the state. Joyce Kruger of CSTC is retiring state president.

First semester officers of the club were Phoebe St. John, president; Ruth Olson, vice president; Margaret Jones, secretary; Lillian Douglass, treasurer. Second semester officers are Marilyn Bobbe, president; Beverly Barnes, vice president; Ruth Olson, secretary; and Lillian Douglass, treasurer.

Miss Allen and Miss Meston are advisers for the club.

# POINTER



Top—DeGuire; Van Hecke; Greathouse; Boettcher; Turzenski; Holstein; Kasper; Worzalla  
Bottom—Derge; Knutson, A.; Gerber; Tauchen; Rickel; Chappell; Leahy, R.

## *Student*

Standing—Thompson; Wood; Harvey, D.  
Seated—Sbertole; Attleson; France



Standing—Witalison; Sisley, Pliska; LaLeike  
Seated—Miss Glennon, Mr. Lewis



# IRIS



Top—Berndt, R.; Greathouse; Mayer, N.; Sisley; Douville; Bea; Henderson.  
Bottom—Swanke; Artz; Wittmann; Chappell; Goebel; Hoglund; Alderton, D.; Finch, R.

## *Publications*

Standing—Worzalla; Johnson, H. Gmeiner; Marsh; Putzler  
Seated—Miss Wright; Dr. Tolo



# CO-OP



You've never really eaten until you have feasted at the Central State Co-op. For just five dollars you can get nine big meals plus the company of good friends. The Co-op is a non-profit organization run by students on the campus. The eating habit of the campus, it is also the place where gripes are aired and opinions formed; a spoke in the wheel of student actions and feelings.



## *Officers*

Alex Aschenbrenner, Elsworth Gaulke, Bill Bart





*Royalty Amid Showers*

*Prom Queen And King*

*Muriel Neerhof and Bob Cook*



This last year class leaves no doubt that their college life has been a grand adventure. Their four years of work and play at Central State have left their mark — as each senior leaves his here. Events — good and bad — stories, and shared memories welded this class into a compact unit. Their life's work has been planned and every senior will soon be on his own. Each individual came to CSTC — representative of his own section of the state. Instructors, other students, and his studies have aided him in his search for satisfaction. His experiences — practice teaching, courses, academic and social activities — have all changed him. He is now returning to the state to aid others. Each senior will take with him many treasured memories — athletics, coke dates, the warm sunshine on the campus on a spring day, organization meetings, dances such as his Senior Ball — to keep forever.

Next year will see another class assume the position of leadership — the poise of dignity, the regal air. Now it is theirs, and rightly so. The seniors have proved their ability, their right to the position — they have earned their moment of glory.

# SENIOR



# DIVISION

# TEACHER EDUCATION



Dr. Raymond Gotham, Director of the Training School; Susan Colman, Director of the Primary Division; Dr. Quincy Doudna, Director of the Rural, Intermediate and Upper Elementary Divisions; Raymond Rightsell, Director of the Secondary Division.

The Division Directors and the whole faculty have put forth their utmost efforts to guide the prospective teachers in the field of education. The graduates whose pictures follow are proof of their success. The pictures of the seniors and the men and women who taught them are included on the same pages to portray the close relationship which exists on our campus between the two groups.

*Our faculty . . . . .*



LA FLEUR, JERRY  
Soperton  
Secondary; Major: History.  
Minor: Biology, Social Science  
Newman Club, Forum, Band,  
"S" Club, Football, Basketball,  
Social Science, Student Council,  
Senior Class Vice-President

BERNDT, RICHARD  
Wausau  
Secondary; Major: Biology.  
Minor: Physical Education,  
History  
Football, "S" Club, Sigma Zeta



## From the North,



SZYMANSKI, RAYMOND  
Marathon  
Secondary; Major: Mathematics.  
Minor: Physical Education,  
Conservation  
Forum

SZYMANSKI, WALLACE  
Marathon  
Secondary; Major: Mathematics.  
Minor: Physical Education,  
Conservation  
Forum

NOVITZKE, CLARENCE  
Edgar  
Secondary; Major: Biology,  
General Science. Minor: Chemistry,  
History  
Forum, Science Club

MORGAN, ROBERT  
Marathon  
Secondary; Major: Chemistry.  
Minor: Mathematics, Physics  
Sigma Zeta, Chi Delta Rho,  
Glee Club, Forum

JENKINS, WARREN  
A.B., M.A., Ph.D.

WRIGHT, HARRIET  
B.S., Ph.M.

GLENNON, BERTHA  
A.B., M.A.

HEEL HELEN  
B.A., M. Mus.





KROMROY, ARLENE  
Coleman  
Secondary; Major: Geography. Minor: English, Mathematics  
Radio Workshop, Alpha Psi Omega, Omega Mu Chi, Y. W. C. A., W. S. G. A., Dorm President

LUDWIG, WALLACE  
Phelps  
Major: Intermediate, Upper Elementary

ESCHENBAUCH, CHARLES  
White Lake  
Major: Intermediate, Geography. Minor: History  
Grammar Round Table

GAULKE, ELLSWORTH  
Wausau  
Secondary; Major: Geography. Minor: Physical Education, Geography  
"S" Club, Radio Workshop, Social Science Club

GRAHAM, DOUGLAS  
Owen  
Secondary; Major: Mathematics. Minor: Physics, Geography  
Sigma Zeta, Gamma Delta, Scoutmaster Training

MYKLEBY, PHYLLIS  
Star Lake  
Secondary; Major: History. Minor: Geography, English  
Iris, Alpha Psi Omega, Y. W. C. A., Dorm Council, Interfaith Council, Forum

HEINZ, GEORGE  
Brokaw  
Secondary; Major: Conservation. Minor: Biology, Mathematics, History  
Alpha Kappa Lambda

KOHTA, RUDOLPH  
Phelps  
Major: Intermediate, History. Minor: Physics, English  
Chi Delta Rho, Football, Round Table, Social Studies Club

DAVIS, MILDRED  
A.B., M.A.

BAINTER, MONICA  
A.B., M.A.

BOYLAN, KENNETH  
B.S., M.A.

MESTON, HELEN  
B.S., M.A.





BARTELT, JOHN  
Marathon  
Secondary; Major: Mathematics. Minor: Physical Education, General Science  
Glee Club, Sigma Zeta, Forum

BEILKE, REUBEN  
Wausau  
Secondary; Major: History. Minor: Geography, English  
Phi Sigma Epsilon, Social Science Club, Pointer, Iris, Gamma Delta, Student Council

WINKLER, EDWARD  
Unity  
Secondary; Major: Geography. Minor: Physical Education, History  
Forum

EMMERICH, CAROL  
Hamburg  
Major: Rural  
Tau Gamma Beta, Rural Life, Iris

SCHNEIDER, MAE  
Merrill  
Major: Intermediate  
Y. W. C. A., Wesley, Chorus, Grammar Round Table

KORTH, IRVING  
Antigo  
Secondary; Major: Biology, Conservation. Minor: History  
Sigma Zeta, Alpha Kappa Lambda, Forum

ERDMAN, WILLIAM  
Sayner  
Secondary; Major: General Science. Minor: Art, Mathematics  
Wesley

STENERSON, ROBERT  
Merrill  
Secondary; Major: Biology. Minor: English, Conservation  
Glee Club, Pointer, Chi Delta Rho

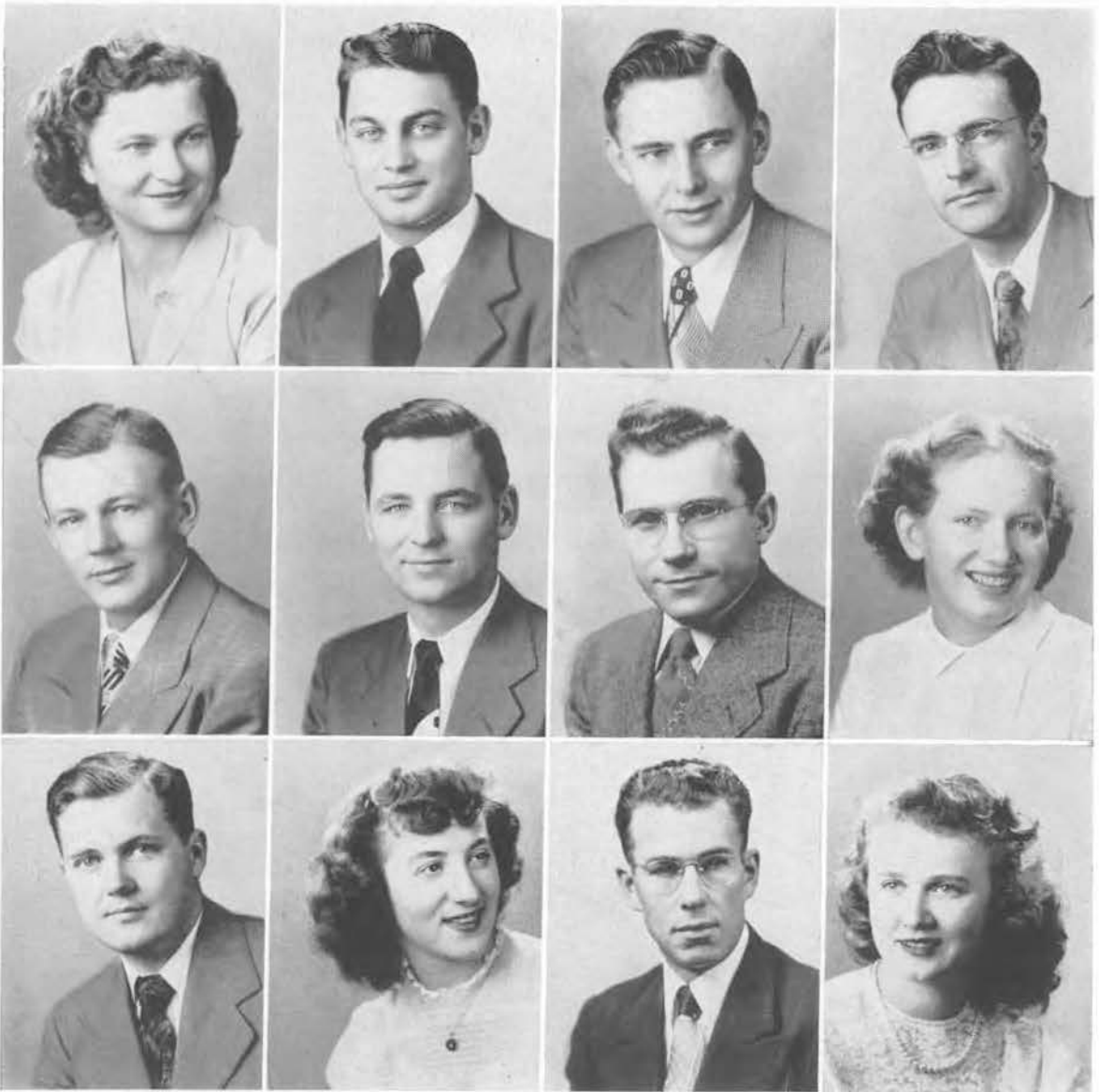
CARLSTEN, EDNA  
B.A.E.

WIEVEL, BERNARD  
B.E., M.S., Ph.D.

HANSEN, WILLIAM C.  
B.S., M.S.

STEINER, HERBERT  
Ph.B., Ph.M.





LUEDTKE, IRENE  
Edgar  
Major: Rural  
Gamma Delta, Rural Life

STRASSBURG, CARL  
Merrill  
Secondary; Major: History.  
Minor: Geography, Social Science  
Glee Club, Chi Delta Rho, Social Science Club, Forum

STERTZ, DELOYD  
Junction City  
Secondary; Major: Mathematics. Minor: Physics, Biology

YANKE, ERVIN  
White Lake  
Major: Intermediate, Upper Elementary  
Gamma Delta

TAYLOR, EUGENE  
Pelican Lake  
Secondary; Major: Mathematics. Minor: Science, History

LENSMIRE, MAE  
Marathon  
Major: Rural  
Newman Club, Rural Life Club

LEKLEM, ROBERT  
Wausau  
Secondary; Major: Biology.  
Minor: French, Chemistry, Conservation  
Football Manager, Basketball, "S" Club, Chi Delta Rho

GRIFF, ERNEST  
Wausau  
Secondary; Major: Mathematics. Minor: French, Geography  
Forum, Glee Club, Mixed Chorus, Newman Club, Sigma Zeta

REEVES, CHARLES  
Antigo  
Secondary; Junior High. Major: Biology. Minor: English, Geography  
Pointer, Glee Club, Wesley

WOOD, JAMES  
Wausau  
Major: Three Year Rural  
Rural Life, Pointer

KUSE, HILDEGARD  
Medford  
Major: Primary  
L. S. A., W. A. A., W. S. G. A., Primary Council, Pointer, Dorm Council

ZASTROW, JOYCE  
Athens  
Major: Rural  
Rural Life, Gamma Delta, Glee Club



CHRISTIAN, WARNER  
Wausau  
Secondary; Major: History.  
Minor: Physical Education, Social Science  
Track, Basketball, "S" Club,  
Phi Sigma Epsilon, Forum

KELLEY, PATRICIA  
Tomahawk  
Major: Rural  
Newman Club, Rural Life Club

GOTH, LORRAINE  
Phillips  
Secondary; Major: Home Economics.  
Minor: History, Biology  
W. A. A., Home Economics Club,  
W. S. G. A., Newman Club

ST. JOHN, PHOEBE  
Biramwood  
Secondary; Major: Home Economics.  
Minor: General Science, History  
Home Economics Club

KASPER, PHYLLIS  
Land O'Lakes  
Secondary; Major: English.  
Minor: Geography, History  
Iris Editor, Pointer, Tau Gamma  
Beta, Sigma Tau Delta,  
Alpha Psi Omega, Wesley,  
Y.W.C.A., Radio Workshop,  
Glee Club, Dramatics, Student  
Council

LANIGAN, CHARLES  
Tomahawk  
Secondary; Major: Conservation.  
Minor: Biology, History  
Alpha Kappa Lambda, Chi  
Delta Rho, Sigma Zeta

EVERS, VIRGINIA  
Merrill  
Secondary; Major: History.  
Minor: English, Spanish  
Pointer, Wesley, Y. W. C. A.,  
Radio Workshop, Glee Club,  
Sigma Tau Delta, Forum

COX, WILMAR  
Soperton  
Secondary; Major: Biology.  
Minor: English, Conservation  
Sigma Zeta, Chi Delta Rho

O'CONNOR, KATHLEEN  
Mosinee  
Major: Primary  
Tau Gamma Beta, Alpha Psi  
Omega, Newman Club, Primary  
Council

SICKLER, DALE  
Wausau  
Major: Rural  
Rural Life, Gamma Delta

SISLEY, JANICE  
Phelps  
Secondary; Major: English.  
Minor: Geography, History  
Tau Gamma Beta, Sigma Tau  
Delta, Alpha Psi Omega,  
Pointer, Iris, Wesley, Y.W.C.A.

CARLSON, MELVYN  
Ogema  
Secondary; Major: English,  
History. Minor: Biology  
Phi Sigma Epsilon, Sigma Tau  
Delta, Dramatics





JONES, THELMA  
Friendship  
Major: Rural  
Rural Life, Gamma Delta,  
W. A. A.

WEBSTER, LOIS VROMAN  
Plainfield  
Major: Home Economics.  
Minor: History, Biology

KRUGER, JOYCE  
Westfield  
Secondary; Major: Home Economics. Minor: Biology, English  
Home Economics Club, Omega Mu Chi, W. S. G. A. President, W. A. A., Wesley, Pointer

KOWALESKI, JOHN  
Milwaukee  
Major: History. Minor: English, Biology  
Phi Sigma Epsilon, Student Council president, Men's Glee Club, Forum, Sigma Tau Delta, Alpha Psi Omega, Newman Club, Radio Workshop, Junior Class vice-president.

FLETCHER, BERNICE  
Plover  
Major: Rural  
Rural Life, Wesley

PETERS, ROBERT  
Grand Marsh  
Major: Intermediate  
Grammar Round Table, Alpha Kappa Lambda

DOUGLASS, LILLIAN  
Coloma  
Secondary; Major: Home Economics. Minor: English, General Science  
Home Economics Club, W. A. A., Pointer, Wesley

TRZEBIATOWSKI, BETTY  
Almond  
Major: Rural  
Rural Life, Newman Club



*and South*



PHILLIPS, EDITH  
Neshkoro  
Major: Rural  
Y. W. C. A., Rural Life, Wesley, Glee Club

COLLUM, LAVERNE  
Wild Rose  
Secondary; Major: English.  
Minor: Spanish, History  
Sigma Tau Delta, W. A. A., Wesley, Forum

BREWER, FREDRICK  
Waupun  
Secondary; Major: English.  
Minor: Music, Speech  
Phi Sigma Epsilon, Band, Orchestra, Alpha Kappa Rho

ZIMPELMANN, DORIS  
Milwaukee  
Major: Intermediate  
Gamma Delta, Round Table, Mixed Chorus

HENNIG, HARRIET  
Watertown  
Major: Primary  
Iris, Pointer, Primary Council, Dorm Council, W. S. G. A., Y. W. C. A.

SCHWARTZ, MILTON  
Montello  
Secondary; Major: Biology, Conservation. Minor: History  
Alpha Kappa Lambda

SABALA, FRANCINE  
Chicago  
Major: Rural  
W. A. A., Rural Life

JEWELL, JOAN  
Pine River  
Major: Rural  
Rural Life, Wesley, Y. W. C. A.

HANSON, GERTIE L.  
Ph.B., Ph.M.

PIFFNER, ELIZABETH  
B.E., Ph.M.

KAMPENGA, NELIS  
A.B.L.S., A.M.L.S.

BERG, GEORGE  
B.S., M.S.





PETERSON, WALTER  
Cashton  
Secondary; Major: English.  
Minor: Music, History  
Phi Sigma Epsilon, Alpha  
Kappa Rho, Sigma Tau Delta,  
Band, Orchestra, Mixed  
Chorus, Dramatics

SACHO, ROLAND  
Edgar  
Secondary; Major: Conserva-  
tion. Minor: Biology, Social  
Science  
Glee Club, Radio Workshop,  
Alpha Kappa Lambda

PETERSON, GRACE  
Iola  
Major: Primary. Minor: Music  
Alpha Kappa Rho, Band, Or-  
chestra, Mixed Chorus, Girls'  
Glee Club, L. S. A., Primary  
Council, Tau Gamma Beta

BENJAMIN, EARL C.  
Bancroft  
Secondary; Major: History.  
Minor: Mathematics, Geogra-  
phy  
Newman Club

PINTHER, HAROLD  
Madison  
Secondary; Major: Conserva-  
tion. Minor: Physical Educa-  
tion, Biology  
Iris, Track, Alpha Kappa  
Lambda

MADSEN, MILTON  
Sparta  
Secondary; Major: Conserva-  
tion. Minor: History, Biology  
Alpha Kappa Lambda

BEDNAREK, DONALD  
Princeton  
Secondary; Major: History.  
Minor: Social Studies, Biology  
Newman Club, Radio Work-  
shop, Forum

HAKES, LORRAINE  
Plainfield  
Secondary; Major: English.  
Minor: History, Spanish  
Wesley, Forum, Sigma Tau  
Delta, Mixed Chorus

TOLO, HAROLD  
A.B., M.A., Ph.D.

KREMPLE, FREDERICH  
A.B., M.A.

ISAACSON, PAULINE  
B.E., M.A.

KNUTZEN, NORMAN  
A.B., M.A.





ROACH, MAY  
B.S.



QUANDT, HALE  
B.A., M.A.



FAUST, GILBERT  
B.S., M.S.



MICHELSSEN, PETER J.  
Graduate Vandercook  
School of Music

PETERSON, MARIE  
Elderon  
Secondary; Major: Biology.  
Minor: Chemistry, Mathematics  
Sigma Zeta

GREEN, RICHARD  
Chicago  
Secondary; Major: Mathematics,  
Minor: Physics, History  
Chi Delta Rho, Sigma Zeta

HUBBARD, FRED  
Milwaukee  
Secondary; Major: Conservation.  
Minor: Biology, General Science  
L. S. A., Alpha Kappa  
Lambda, Cheerleader

KLINGBEIL, GERALD  
Westfield  
Secondary; Major: Biology.  
Minor: Chemistry, History

WAINWRIGHT, ROBERT  
Oxford  
Secondary; Major: Conservation,  
Geography. Minor: History, Biology  
Alpha Kappa Lambda, Iris

WEDDERKOP, HERMAN  
Westfield  
Secondary; Major: Biology.  
Minor: History, Geography,  
English  
Sigma Zeta, Gamma Delta,  
Forum, Social Science Club

EICHSTEADT, ALICE  
Montello  
Major: Rural  
Rural Life, Gamma Delta





KUETER, ARMOND E.  
Sheboygan Falls  
Major: Intermediate, Upper  
Elementary  
Glee Club, Student Council

GURHOLT, JOHN EDMOND  
Iola  
Intermediate, Upper Eleme-  
ntary; Major: History, Minor:  
Geography, English  
Grammar Round Table, L.S.A.,  
Social Science Club

JACOBSON, MARIE YVONNE  
Iola  
Major: Intermediate  
Girl's Glee Club, W.A.A.,  
L.S.A., Grammar Round Table

STOLTENBERG, HARLAN  
Amherst  
Intermediate, Upper Eleme-  
ntary; Major: History, Minor:  
Geography, Social Studies  
Glee Club, Student Council,  
Chi Delta Rho, Radio Round  
Table

OTTOW, HERBERT C. W.  
Oconto  
Secondary; Major: Conserva-  
tion, Biology, Minor, History  
Alpha Kappa Lambda, Stu-  
dent Council

HILMER, MAX E.  
Plover  
Secondary; Major: Mathemat-  
ics, Minor: History, English



ALBERG, BERNARD LEWIS  
Tigerton  
Secondary; Major: Chemistry,  
Minor: Mathematics, Physics  
L.S.A., Chi Delta Rho, Sigma  
Zeta, Alpha Psi Omega, Iris,  
Radio Workshop, Pointer

WEGMAN, GERTRUDE  
Sturgeon Bay  
Major: Primary  
Primary Council, Radio Work-  
shop, W.S.G.A., Gamma Delta

FONSTAD, DARYL  
New London  
Secondary; Major: English,  
Minor: History, Spanish  
Radio Workshop, Chi Delta  
Rho



## East



NIXON, FLOYD  
A.B., M.A., Ph.D.



BURROUGHS, LELAND  
A.B., M.A.



SPECHT, RAYMOND  
B.S., M.A.



LEWIS, ROBERT  
B.A., B.S., M.A.

REDMANN, GLORIA  
New London  
Major: Rural  
Rural Life Club, L. S. A.

OLSON, RUSSELL  
Iola  
Secondary; Major: Conserva-  
tion. Minor: Biology, Geogra-  
phy  
Alpha Kappa Lambda, Forum,  
L. S. A.

TAYLOR, SAM  
Waupaca  
Major; Intermediate, Upper  
Elementary  
Wesley Foundation

WITALISON, ARTHUR  
Fish Creek  
Secondary; Major: History.  
Minor: Geography, English  
L. S. A., Forum, Pointer, Stu-  
dent Council, Social Science  
Club, Chi Delta Rho

NELSON, GARY  
Waupaca  
Secondary; Major: Chemistry.  
Minor: Physics, Mathematics  
Chi Delta Rho, Band

SOLVERUD, RACHEL  
Nelsonville  
Major: Intermediate

SOLVERUD, LOUISE  
Nelsonville  
Major: Intermediate

JOHNSON, MARGARET  
Waupaca  
Major: Intermediate  
Iris, Tau Gamma Beta, Social  
Science Club, Dorm Council,  
Grammar Round Table, Mixed  
Chorus





BOREK, FRANCES  
City Point  
Major: Rural  
Rural Life

HEMSTOCK, HARRY  
Sparta  
Secondary; Major: Mathematics.  
Minor: Chemistry, Music  
Phi Sigma Epsilon, Alpha Kappa Rho

STAUSS, JAMES  
Marshfield  
Secondary; Major: Biology.  
Minor: History, French  
Phi Sigma Epsilon, Glee Club,  
Forum

GIERL, WILBUR  
Colby  
Secondary; Major: General  
Science. Minor: Physical Education,  
Geography  
Phi Sigma Epsilon, Science Club

SALTER, WAYNE  
Marshfield  
Secondary; Major: English.  
Minor: Geography, History  
Glee Club, Alpha Psi Omega,  
Sigma Tau Delta

BENNETT, ROBERT  
Stevens Point  
Major: Intermediate  
Round Table, Rural Life,  
Sophomore Vice-President

ASCHENBRENNER, ALEX  
Auburndale  
Secondary; Major: Geography.  
Minor: History, Conservation  
Chi Delta Rho, Alpha Kappa Lambda,  
Newman Club, Social Studies Club

COLVIN, JANIECE  
Stratford  
Major: Rural

HARRIS ALBERT E.  
B.E., Ph.M.

ALLEN, BESSIE MAE  
B.S., M.A.

HICKS, JAMES  
B.S.

RITCHIE, MARGARET  
B.A., B.S.L.S.







MORAVEC, JOSEPH D.  
Cudahy  
Secondary; Major: Conserva-  
tion. Minor: History, Biology  
Alpha Kappa Lambda, Gam-  
ma Delta, Radio Workshop

ELLINGSON, ROBERT  
Amherst Junction  
Secondary; Major: Conserva-  
tion. Minor: Social Sciences,  
Biology  
Intramurals, Forum, Men's  
Glee Club, Mixed Chorus,  
L.S.A., A.K.L.

O'CONNOR, RUSSELL L.  
Gillett  
Intermediate, Upper Elemen-  
tary; Major: Biology. Minor:  
Social Science, Geography,  
History  
Newman Club

KOEHN, JIM  
Little Chute  
Secondary; Major: English.  
Minor: Physical Education,  
History  
Sigma Tau Delta, Chi Delta  
Rho, "S" Club, Football

COLMAN, SUSAN  
Ph.B., Ph.M.

WILSON, EMILY  
B.S., Ph.B., M.S.

BLODGETT, ALICE  
B.A.

RIGHTSELL, RAYMOND M.  
A.B., M.A.





GUZMAN, DONALD  
Stevens Point  
Secondary; Major: Chemistry.  
Minor: Physics, Chemistry  
Phi Sigma Epsilon

BERNDT, ESTHER  
Stevens Point  
Major: Primary  
Primary Council, Omega Mu  
Chi, Social Science Club

ZEI, JOHN  
Stevens Point  
Secondary; Major: English.  
Minor: History, Biology  
Glee Club, Wayland Club,  
Sigma Tau Delta

KOHLER, MARJORIE  
Stevens Point  
Secondary; Major: Mathemat-  
ics. Minor: English, History  
Omega Mu Chi, Alpha Kappa  
Rho, Sigma Tau Delta, Stu-  
dent Council, Forum, Orchestra

BELKE, PATRICIA  
Stevens Point  
Secondary; Major: Biology,  
Minor: Chemistry, History  
Tau Gamma Beta, Social Sci-  
ence Club

MARTINI, JOSEPH  
Stevens Point  
Junior High School; Major:  
Conservation. Minor: Biology,  
French  
Alpha Kappa Lambda

WESTENBERGER, BOB  
Stevens Point  
Secondary; Major: History.  
Minor: Biology, English  
Phi Sigma Epsilon

RYBICKE, COLLEEN  
Stevens Point  
Major: Primary  
W. A. A., Cheerleaders' Club,  
Primary Council, Newman  
Club, Glee Club, Mixed  
Chorus



# Stevens Point



SKUPNIEWICZ, JAMES  
Stevens Point  
Major: Rural  
Newman Club, Rural Life

PHILLIP, GEORGE  
Stevens Point  
Major: Intermediate, Upper  
Elementary  
Phi Sigma Epsilon, Newman  
Club, Grammar Round Table

BLASKEY, RAY  
Stevens Point  
Secondary; Major: Mathemat-  
ics. Minor: Physics, Chem-  
istry

COLLINS, CAROL  
Stevens Point  
Major: Primary  
Newman Club, Tau Gamma  
Beta, Primary Council, Mixed  
Chorus

BURCH, BURNETT, JR.  
Stevens Point  
Secondary; Major: English.  
Minor: History, Biology  
Radio Workshop, Newman  
Club, Sigma Tau Delta, Social  
Science Club, Dramatics

LASZEWSKI, LORRAINE  
Stevens Point  
Major: Rural  
Rural Life Club  
Newman Club, Boy Scout  
Leader, Forum

KLUCK, DONALD  
Stevens Point  
Secondary; Major: Mathemat-  
ics. Minor: History, Social Sci-  
ence  
Sigma Zeta

FINCH, RUTH  
Stevens Point  
Major: Primary  
Omega Mu Chi, W. A. A.,  
Y. W. C. A., Dorm Council,  
Student Council, Primary  
Council, Interfaith Council,  
Iris

REPPEN, NELS O.  
A.B., M.A., Ph.D.

CROW, FRANK  
B.S., A.B., Ph.M.

LYNESS, ARTHUR  
B.S., M.S., Ph.D.





EPPLER, AROL C.  
B.S., M.S.



PIERSON, EDGAR  
B.S., M.S., Ph.D.



MOSER, MIRIAM  
B.S.



TRYTTEN, ROLAND  
B.A., Ph.D.

WHITNEY, JOHN  
Stevens Point  
Secondary; Major: History.  
Minor: Music, Geography  
Phi Sigma Epsilon, Alpha  
Kappa Rho, Band, Orchestra,  
Mixed Chorus, Glee Club, So-  
cial Science Club

FORMELLA, JAMES  
Stevens Point

WHELIHAN, JAMES  
Stevens Point  
Major: Intermediate  
Band, Orchestra, Phi Sigma  
Epsilon, Mixed Chorus

MARTINI, WILLIAM  
Stevens Point  
Secondary; Major: Conserva-  
tion. Minor: Biology, Social  
Science  
Alpha Kappa Lambda

YONASH, TOM  
Stevens Point  
Secondary; Major: Geogra-  
phy. Minor: History, Spanish  
Student Council, Radio Work-  
shop, Alpha Kappa Lambda,  
Newman Club

PEABODY, RITA  
Stevens Point  
Major: Primary. Minor: Art  
Newman Club, W. A. A.,  
Chorus, Pointer, Iris, Primary  
Council

REED, LESTER  
Stevens Point  
Secondary; Major: History.  
Minor: Geography, Social Sci-  
ence  
Chi Delta Rho, Social Science  
Club, Bowling

SBERTOLE, BERNARD  
Stevens Point  
Secondary; Major: Mathemat-  
ics. Minor: Physics, Chemistry  
Sigma Zeta, Chi Delta Rho,  
Newman Club, Dramatics





BEMOWSKI, MARY  
Stevens Point  
Secondary; Major: English.  
Minor: History, Spanish  
Newman Club, Sigma Tau  
Delta; Forum

BERG, MELVIN  
Stevens Point  
Secondary; Major: English.  
Minor: Speech, History  
Sigma Tau Delta, Alpha Psi  
Omega, Chi Delta Rho, Dra-  
matics, Iris

BRESKE, LEONA  
Stevens Point  
Major: Rural  
Rural Life Club, Newman Club

WALDOCH, ALBIN  
Stevens Point  
Secondary; Major: Mathemat-  
ics. Minor: History, General  
Science  
Newman Club

HAGER, WAYNE  
Stevens Point

SMILEY, EUGENE  
Stevens Point  
Secondary; Major: Mathemat-  
ics. Minor: Chemistry, Physics  
Chi Delta Rho, Sigma Zeta,  
Newman Club

LA MARCHE, EUGENE  
Stevens Point

SPINDLER, CARL  
Stevens Point

NEWTON, MARCHITA  
Stevens Point  
Major: Primary  
Girls Glee Club, Primary  
Council, W. A. A.

MASON, SYBLE  
B.E., M.S.





# And West, We Came . . .

SCHMIDT, DOROTHY  
Two Rivers  
Secondary; Major: Home Economics. Minor: History, Biology  
Home Ec. Club, Wesley Foundation, Forum, W.S.G.A., W.A.A.

RADICHEL, CAROL  
Hortonville  
Major: Primary  
W.A.A., Primary Council, Gamma Delta, Pointer, W.S.-G.A.

NEGLEY, GEORGE  
Crivitz  
Secondary; Major: Conservation. Minors: Biology, History  
Sigma Zeta, Student Council, Gamma Delta, Alpha Kappa Lambda, Social Science Club

BOBBE, MARILYN  
Nelsonville  
Secondary; Major: Home Economics. Minor: Biology, Spanish  
Omega Mu Chi, Home Economics Club, L. S. A.

VAN ORNUM, LOLA MAE  
Wisconsin Rapids  
Secondary; Major: Home Economics. Minors: Geography, General Science  
Home Ec. Club, Wesley, Y.W.-C.A., Tau Gamma Beta, Forum, W.S.G.A.

WARNER, BETTE RAE  
Wisconsin Rapids  
Major: Rural  
Rural Life Club, Y. W. C. A., Student Council, Canterbury Club, Nelson Hall Council

SPRISE, DONALD  
Wisconsin Rapids

FURMANEK, THERESE  
Amherst  
Major: Primary  
Rural Life, Newman Club, Primary Council





HUMKE, EVERETT  
Greenwood  
Major: Intermediate  
Chi Delta Rho, Junior Class  
President

KEARNS, MARY  
Dalton  
Major: Primary  
Newman Club, Primary Council

RUDER, CLARENCE  
Nekoosa  
Secondary; Major: History.  
Minor: Social Studies, Biology

NEUMANN, VIOLET  
Spencer  
Major: Rural  
Gamma Delta, Girls' Glee  
Club, Mixed Chorus, W. A. A.

JENSEN, JOYCE  
City Point  
Major: Rural  
Y. W. C. A., Wesley, Rural  
Life

HOFER, VIOLA  
Pittsville  
Major: Rural  
Rural Life, Gamma Delta

GOTTER, ELROY  
Loyal  
Secondary; Major: Mathematics.  
Minor: English, History,  
Physics  
Pointer, Sigma Zeta, Forum

GUENSBURG, EDGAR  
Marshfield

CONNOR, MARY  
Auburndale  
Major: Primary  
Primary Council, Omega Mu  
Chi, W. A. A., Y. W. C. A.

ALTMANN, FREDERICK  
Blenker  
Secondary; Major: Mathematics.  
Minor: Physics, Biology  
Forum

GUENSBURG, JOHN  
Marshfield  
Secondary; Major: History.  
Minor: Geography, Social  
Science  
Social Science Club

MEWS, CAROL  
Auburndale  
Secondary; Major: Biology.  
Minor: Physical Education,  
History  
Gamma Delta, Women's Ath-  
letic Association, Forum,  
Omega Mu Chi, Y. W. C. A.,  
Girls Glee Club, Mixed Chorus



BREHM, ROBERT  
Wisconsin Rapids  
Major: Intermediate  
Glee Club, Junior Class Treas-  
urer, Grammar Round Table

QUINNEL, GERALD  
Sigel  
Major: Intermediate  
Gamma Delta, Grammar  
Round Table, Glee Club,  
Mixed Chorus, Cheerleader

*and now  
as teachers  
return*

VEDDER, FRANK  
Marshfield  
Major: General Science. Minor:  
Mathematics, French  
Sigma Zeta

KENNEY, JOANN  
Marshfield  
Secondary; Major: Biology.  
Minor: Chemistry, English  
Omega Mu Chi, Sigma Zeta,  
Sigma Tau Delta, Iris, Glee  
Club, Mixed Chorus, W. S.  
G. A., Student Council, New-  
man Club

PARKER, ARCHIE  
Pittsville  
Secondary; Major: Biology,  
Minor: Chemistry, Mathemat-  
ics

MAU, JAMES  
Marshfield  
Secondary; Major: Mathemat-  
ics. Minor: Chemistry, Physics  
Science Club

LEVIN, ADELINE  
B.S., M.A.

MOTT, JOSEPH  
B.S.

SCHMEECKLE, FRED  
A.B., M.S.

SYLVESTER, WALTER  
B.S., M.S.







SWALLOW, MARIE  
Secretary of the Training School

KERST, MARJORIE  
Rural Demonstration School Supervisor





*"A teacher affects eternity; he can never  
tell where his influence stops"*

## TRAINING SCHOOL

*Monday Conference*



Dr. Gotham



KNOX, WILLIAM B.  
B.E., M.S.

PIERCE, BURTON  
Ph.B., M.A.

CUTNAW, EDITH  
Ph.B., M.A.

SCHLEUTER, FRIEDA  
B.E.

CSTC is well noted for the fine quality of teachers which it sends into the teaching field each year. A great deal of credit goes to Dr. Gotham, director of the Training School, and the supervising staff who do their utmost to turn out the best teachers. This year witnessed an increasing number of college students preparing for teaching, which prompted an expansion in the college training program. Kindergarten class was added to accommodate primary teachers, and facilities for the secondary people were also expanded. Arrangements were made for practice teaching at P. J. Jacobs High School in Stevens Point, and in high schools at Nekoosa, Wisconsin Rapids, Port Edwards, and Mosinee.

The requests for teachers in the elementary field, home economics, music, and physical education exceeded the others this year, but the quality of CSTC teachers in any field ranks high in placement in the state.

SAMTER, MARY S., DIEHL, LEAH L.  
B.E., M.A. PH.B., M.A.

VAN ARSDALE, GLADYS  
A.B., M.A.

WILLIAMS, MILDREDE L.  
B.A., M.A.

GRIME, ELSIE  
B.S., M.A.



# ADVERTISEMENTS --

To the business men of this community and to the **pioneers**, the out-of-town advertisers, we wish to express our sincere appreciation for the splendid way they have subscribed to this book, and also for their attitude of courtesy and consideration which they have extended to us and our fellow college students.

Sincerely,

*Bill Worzalla*

*Pete Thomas*

	Page		Page
Altenburg's Dairy .....	110	Lullabye Furniture Corporation .....	121
Aluminum House .....	111	McAuliffe Corset Shop .....	131
Arenberg's Jewelry Company .....	131	Modern Toggery .....	121
Automobile Dealers Association .....	111	Montgomery Ward .....	121
Bake-Rite Baking Company .....	111	National Bookbinding Company .....	129
Belke Lumber Company .....	112	Nigbor Fur Coat Company .....	121
Belmont Hotel .....	127	Normington Dry Cleaning Company .....	122
Big Shoe Store .....	112	Otterlee Jewelry Company .....	122
Boston Furniture Company .....	112	Peickert's Meat Market .....	123
Breitenstein Company .....	112	Penney's .....	123
Brock Engraving Company (Madison) .....	109	Phillip's Studio .....	123
Campus Cafe .....	113	Phoenix Chair Company (Sheboygan) .....	110
Central Wisconsin Recreation Alley's .....	114	Point Beverage Company .....	124
Citizens National Bank .....	114	Point Cafe .....	124
City Bus Lines .....	114	Polly Frocks .....	124
Coca-Cola Bottling Company .....	114	Quality Store .....	124
College Counter .....	115	Selks-Burr Oaks .....	125
College Eat Shop .....	115	Shippy Shoe Store .....	125
Continental Clothing Company .....	116	Slicker's Texaco Station .....	131
Copps Company .....	115	Sport Shop .....	125
Crown's Auto Sales (Wisconsin Rapids) .....	130	Sportsman's Store .....	125
Delzell Oil Company .....	116	Spot Restaurant .....	131
Helen Fierek's Hat Shop .....	131	Sorenson's Floral .....	126
First National Bank .....	116	Taylor's Drugs .....	126
Fisher's Dairy .....	117	Tigerton Lumber Company (Tigerton) .....	130
Frank's Hardware .....	131	Treasure Chest .....	126
Green's Style Shop .....	131	Tucker's Studio .....	131
Hannon's Drug Store .....	117	Urban Telephone Company (Clintonville) .....	109
Hardware Mutual Casualty Company .....	118	Vanity Dry Cleaners .....	131
Home Furnishing Company .....	117	Vetter Manufacturing Company .....	127
Joerns Bros. Furniture Company .....	117	Walter's Flower Shop .....	126
Joe's Yellowstone Hotel & Motor Court .....	119	Welsby's Dry Cleaning Company .....	127
Journal Printing Company .....	119	Westenberger's Drug Store .....	128
Kalka Steak House .....	119	Whiting-Plover Paper Company .....	128
Karp's Bootery .....	120	Wilshire Shop .....	128
Kostka Fur Coat Company .....	120	Wisconsin Power and Light Company (Clintonville) ..	109
Krembs Hardware Company .....	120	Wisconsin Public Service Corporation .....	130
LeRoy's Dress Shop .....	131	Worzalla Publishing Company .....	129

**URBAN  
TELEPHONE COMPANY**



Clintonville



Yes, you can rely on Reddy Kilowatt, your electric servant . . . day after day . . . the year around for convenient, economical, electric living.

**WISCONSIN POWER  
AND LIGHT COMPANY**



**ADVERTISING STAFF**

*Pete Thomas and Bill Wozgalla*

ASSISTANT

MANAGER

**THE  
BROCK  
ENGRAVING  
CO.**

MADISON, WISCONSIN



Extends congratulations to the advertising staff for its fine job on the production of the 1950 IRIS.



NELSON HALL

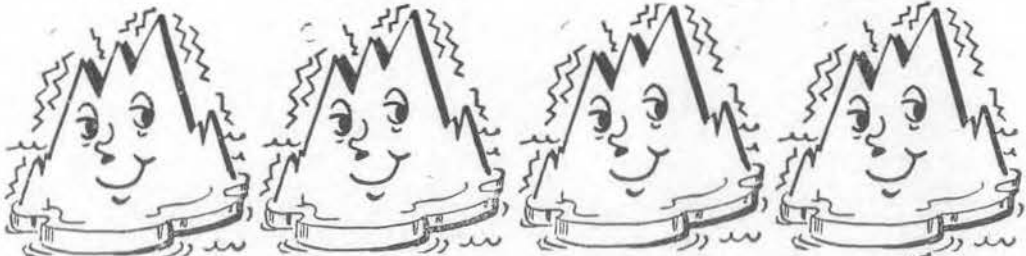
Modernistic furnishings by the Phoenix Chair Company have made Nelson Hall a real "home away from home" for dozens of CSTC co-eds.

**THE PHOENIX CHAIR COMPANY**

Sheboygan, Wisconsin

All

(Ten Bergs)



agree with everyone else that  
**ALTENBURG'S DAIRY**  
products are best. Why don't  
YOU try them?



**"WE FREEZE TO PLEASE"**



## **The Stevens Point Automobile Dealers Association**

### **BOOTH AUTO SALES INC.**

Dodge and Plymouth  
440 Clark St.

### **BREZINSKI MOTORS INC.**

Chrysler, Plymouth, and GMC Trucks  
115 Church St.

### **CARTWRIGHT AUTO SALES**

Studebaker Cars and Trucks  
311 Normal Ave.

### **CROWN'S AUTO SALES**

DeSoto, Plymouth, and Packard  
242 No. 2nd St.

### **ERICKSON MOTOR SALES INC.**

Ford, Mercury, and Lincoln  
309 Strongs Ave.

### **G. A. GULLIKSON CO.**

Cadillac and Chevrolet  
301 Strongs Ave.

### **KARNER AUTO CO.**

International Trucks  
119 Ellis St.

### **NORTH MOTOR SALES**

Pontiac  
234 No. 2nd St.

### **SCHWARTZ BUICK CO.**

Buick  
201 No. 3rd St.

### **SMITH MOTOR CO.**

Oldsmobile  
414 Clark St.

**Extends Congratulations And Best Wishes**



"Dog-gone expense!"  
Eliminate it with beautiful,  
**PERMANENT** aluminum building  
products.

**THE  
ALUMINUM HOUSE**

210 Clark St.

Phone 2950

Compliments of

**THE  
BAKE-RITE BAKING CO.**

Stevens Point, Wisconsin

Phone 2300

Quality Bakers



. . . In fact today — is the time to make those repairs you've been putting off!! We have just the materials YOU need. Come in and see us. Estimates given gladly.

**BELKE LUMBER & MFG. CO.**

Lumber — Building Materials  
 Millwork — Cabinet Work

247 No. 2nd St.

Phone 1304

**BIG SHOE STORE**

Your headquarters for famous nationally advertised footwear: Sport Pals, Friskies, Lolos, Greensteps.

419 Main St.

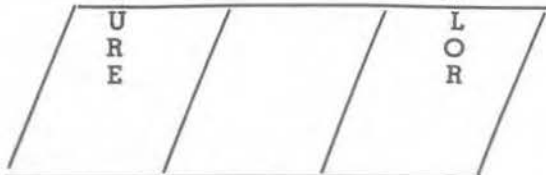
Stevens Point

*"Central Wisconsin's Largest underselling shoe store"*

F  
I  
N  
E  
  
F  
U  
R  
N  
I  
T  
  
U  
R  
E

**BOSTON'S**

F  
U  
N  
E  
R  
A  
L  
  
P  
A  
R  
L  
O  
R



Since 1888

Our "goal" is your satisfaction

We feature

Joerns	Simmons
Lullabye	Kroehler
Philco	Thayer

Lees' floor coverings

430 Main Street

Phone 250

Home of  
**OLD CABIN**



**BREITENSTEIN  
 COMPANY**

Roofing, Siding Paint, Plaster,  
 Cement, Nails, Farm Machinery,  
 Feed, Coal and Coke,  
 Fire Tender Stokers

217 Clark St.

Phone 57





"Chow time at the CO-OP"

The Co-op is an organization which is operated by the students of the college. The Student Co-op is a non-profit organization, its purpose being to give students wholesome meals at lower prices. The Co-op was organized in 1946 with 110 members and has now increased to its capacity number of 150 members. The business is transacted at an open meeting or through an elected board of directors. Each member upon joining, pays an entry fee which is refunded at the end of the year. Students have an opportunity to earn part of their expenses by working in the organization.

OFFICERS:

ALEX ASCHENBRENNER  
 ELLSWORTH GAULKE  
 BILL BART

## **CAMPUS CAFE**

*"Where an atmosphere of friendliness prevails"*

The Campus Cafe, the home of the Student Co-op,  
 offers short orders and fountain service to  
 all students.

1203 Main Street



1709

**Congratulations Seniors**

\* \* \* \*

**Welcome Back Undergraduates**

**CENTRAL  
RECREATION  
ALLEYS**



**Bowling Alleys**

VIC STANKE  
Manager

**Cocktail Bar**

LAMBERT KLUCK  
Manager



"The Horn of Plenty"

. . . Will belong to YOU if you  
form saving habits NOW!!!

Let the

**CITIZENS NATIONAL  
BANK**

help you.

Member of F.D.I.C.

*SO MUCH CONVENIENCE . . .  
SO LITTLE COST . . .*

— 5¢ Takes You Anyplace In Town —

*Buses Every Half Hour*

**THE CITY BUS LINES**

Edward Piotrowski, Prop.

Refresh . . . add zest to the hour



*Ask for it either way  
. . . both trade-marks  
mean the same thing.*

LaSalle Coca-Cola Bottling Company



Best Wishes  
to  
those  
who  
are  
graduating  
from  
**THE  
COLLEGE COUNTER**



**"EXTRA"**

Have you heard about  
the home-cooked food  
offered by IRENE and  
MERV at the

**COLLEGE  
EAT  
SHOP**

If not, try some today!!



**CONGRATULATIONS  
CLASS OF 1950!**



**THE COPPS CO.  
IGA SUPPLY DEPOT**



You don't have to CLOTHES your eyes  
When you're out selecting TIES.  
GLOVES and SCARFS and HOSIERY  
Are sure to SUIT you to a "T."  
And when it comes to UNDER-WEAR,  
HANDKERCHIEFS and SWEATERS fair,  
WALLETS, WOOLENS and sleek top HAT,  
The CONTINENTAL is your best BELT!!

When PA JAMS MA'S kids behind a curtain  
Their duds ain't up to snuff, that's fer  
SHIRT-in.

He could have avoided this little incidental  
By shopping at the CONTINENTAL.

So don't wait till the closet is an empty room—  
Shop now, stock up, and be well groomed!!

**THE CONTINENTAL  
CLOTHING COMPANY**

*"Across from the Fox theater"*



The first lesson in car care . . . . .  
USE GOOD GAS!! You will find  
none better than



Distributed in the  
Stevens Point area by the

**DELZELL OIL COMPANY**

**DID YOU KNOW? . . .**

how great the industrial and commercial predominance of the United States has become? . . . that the commercial and financial center of the world is no longer London but New York? . . . that the diamond center has shifted from Antwerp and Amsterdam to New York? . . . that the Prince of Saudi Arabia was in this country buying American-made broadloom rugs for the Royal Palace back home? . . . that before the war, we imported the great bulk of all cigarette paper used in the United States from France, but that since a commercial process for making cigarette paper from raw flax was so successful, we are now exporting this paper instead of importing?

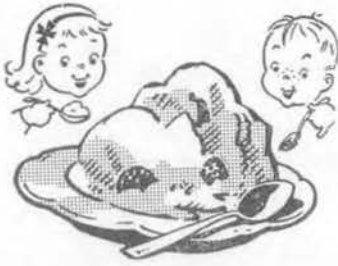
**DID YOU KNOW? . . .**

that by keeping your weekly expenses a few dollars less than your weekly income and saving the difference, you can be assured of future financial independence?

**FIRST NATIONAL BANK**

Stevens Point, Wis.

Children . . .



and grown-ups, too, enjoy smooth FISHER'S ice-cream as well as their other fine dairy products.

**FISHER'S DAIRY**

122 N. 2nd St.

Phone 1902



**HANNON'S  
DRUGS**

- Prescriptions
- Cosmetics
- Luncheons
- Drugs
- Gifts
- Photographic Equipment

441 Main St.

Phone 555

"Across from the Fox theater"



**STOP!**

If you need Carpeting, Linoleum, Window Shades, Venetian Blinds. Come in and see the outstanding quality and workmanship that we can offer you.

**THE HOME FURNISHING CO.**

121 North Second Street

QUALITY in presidents means "Abe" and "George" .....



QUALITY in furniture means.....

**JOERNS BROS.  
FURNITURE  
COMPANY**

THE

# Future

LIES BEFORE YOU

Heartiest congratulations on the successful completion of your scholastic efforts. Graduation marks the end of your college days — Commencement marks the beginning of the next phase in your career. *The future lies before you.*

May your future be guided by such qualities as integrity, confidence and human understanding. May your plans and ambitions be realized in a happy, worthwhile life.

*Insurance for your AUTOMOBILE . . . HOME . . . BUSINESS*

## Hardware Mutuals

HARDWARE MUTUAL CASUALTY COMPANY

HARDWARE DEALERS MUTUAL FIRE INSURANCE COMPANY

*Home Office, Stevens Point, Wisconsin · Offices Coast to Coast*



Put away the magnifying glass Sherlock! Inexpensive Journal want-ads are quicker and more efficient . . . . They GET Results!!!

Get The Habit  
Read The

**STEVENS POINT DAILY JOURNAL**

"Member of the Associated Press"

Your printing problems will be solved by

**THE JOURNAL PRINTING DEPARTMENT**



Dine and Dance  
At

**JOE'S**

*ALL MODERN  
YELLOWSTONE*

Hotel & Tourist Court

Exceptionally  
Fine Food

1 Mile East of the College  
on Highway 10



"The Eating Place With The Homey Atmosphere"

**THE  
KALKA  
STEAK HOUSE**

Featuring  
CHICKEN  
STEAKS — SEA FOOD  
SANDWICHES

Highway 10  
2 Miles East of Stevens Point

### KARP'S BOOTERY

*"The store of personalized shoe fitting"*

*The complete family shoe store . .*

### KARP'S BOOTERY

*"On Stevens Point's famous Market Square"*

You must shop our store to appreciate it.

We Feature:

- Kelvinator { Refrigerators
- { Ranges
- { Freezers
- Maytag { Washers

Huge Toy Department open the year around

### KREMBS HARDWARE CO.

Since 1863

*"On the famous market square"*

Phone 2502

# Kostka Furs

*"FURS OF DISTINCTION"*

QUALITY FIT FOR A QUEEN, BUT . . .  
PRICES TO FIT YOUR POCKETBOOK

CENTRALLY LOCATED

in

STEVENS POINT, WIS.

at

533 MAIN STREET

Telephone 2340

Storage — Repairing — Cleaning



HOMECOMING QUEEN MARGE FINCH



Nationally advertised children's  
furniture



Stevens Point

**THE  
MODERN  
TOGGERY**



The Store For  
**EVERY Man**

450 Main St.

Phone 80

LOOK YOUR  
BEST



Shop For Your  
Complete Wardrobe  
At

**MONTGOMERY WARD**

**PERFECTION  
IN FURS**

*Nigbor*

Milwaukee ● Wausau ● Berlin ● Madison  
Green Bay ● Stevens Point ● Manitowoc

For



PHONE 380

**TODAYS QUIZ:**

- 1—What fish-eating animal that lives in the water and is valued for its fur contains the first part of the name of Stevens Point's leading jeweler?
- 2—What three lettered nick-name for a boys name also means the quarter towards which the wind blows, as opposed to that from which it proceeds?

Put these two words together and you have the name of Stevens Point's outstanding jeweler who features such outstanding watches as Elgin, Hamilton, and Longines, not to mention Art Carved Diamonds by Wood.

To give you clue number three, not that you need it by now:

- 3—This establishment is located at 442 Main Street next to the the Fox Theater.

That's right IT'S . . . . .

**THE OTTERLEE JEWELRY COMPANY**

Answers: 1—Otter, 2—Lee (Leon)



**MAD**  
**AT HIGH PRICES?**  
You'll save money at

**PENNEY'S**  
J. C. PENNEY CO., INC.



For the finest tasting  
meats, poultry, sea food and  
sausages shop at

**PEICKERT'S MEAT MARKET**

Phone 68



You'll be NUTS about your portrait if you have it taken at

**THE PHILLIP'S STUDIO**

"Portraits of Distinction"

306½ Main St. (Above Razner's Store)



768-W

## STEVENS POINT BEVERAGE COMPANY



Bottlers of  
— Point Special Beer —  
Orange Crush, Lemmy and  
other High Grade Soft Drinks

---

Stevens Point's Pure Water  
Used In All Beverages

---

Phone 61



Where friends meet  
and food is supreme!

## THE POINT CAFE

Make your PARTY RESERVATIONS  
in our beautiful  
**COLONIAL ROOM**



in style with a new  
Dress  
Blouse  
Sweater  
Skirt  
from

**POLLY FROCKS**  
Women's Apparel

## THE QUALITY STORE Incorporated



Right this way for exclusive  
WOMEN'S, MISSES, and JUNIORS  
wearing apparel.

445 Main St.

Phone 1950

**FOR**

Sandwiches  
Chicken  
Fish  
Steaks

**AND**

Private Parties and Banquets



YOU can't beat  
**SELCK'S  
BURR-OAKS  
INN**

Highway 51  
2 Miles South of Stevens Point



You'll feel like dancing  
when you wear Shoes  
from Shippy's.

Two entire floors of  
footwear to choose from.

**SHIPPY Shoes**

X-RAY FITTING

319 Main Street

Stevens Point



**THE  
SPORT SHOP**

Headquarters for fishing and hunting  
equipment.

**POINT SPORTING GOODS  
COMPANY**

Make your outing complete with  
equipment from The Sportsman  
Store. Nationally advertised  
hunting and fishing equipment to  
suit your taste and pocketbook.



**THE SPORTSMAN STORE**

446 Main St.

Stevens Point

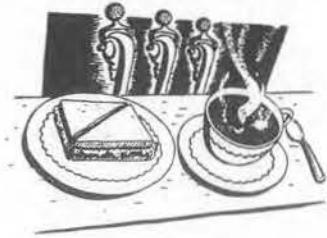
"Next to the Fox theater"



**SORENSEN'S**  
have just what  
you want in  
Floral Arrangements  
so see us before  
you make your  
choice of  
Flowers

**SORENSEN'S FLOWER  
SHOP**

"Our flowers are all home GROWN"



For  
Complete Soda Fountain Service  
Complete Photographic Department  
Cosmetics, Greeting Cards, Stationery  
Candies, Fountain Pens  
Stop In At

**TAYLOR'S**  
PRESCRIPTION  
DRUG STORES

Downtown  
111 Strongs Ave.

South Side  
752 Church St.



Your  
Headquarters  
For  
Gifts  
In  
Stevens  
Point

**J. A. WALTER**

*Florist*



Telephone 1629

"Say it with  
Flowers"

110 N. Michigan Ave.  
Stevens Point, Wis.

Plants and Cut Flower Arrangements  
with Distinction

MEMBER — FLORISTS TELEGRAPH DELIVERY  
ASSOCIATION

# "Better From Vetter"

For



Phone 87

**THE  
VETTER MANUFACTURING COMPANY**



**Headquarters**

**For**

**Parties**

**THE  
BELMONT  
HOTEL**



Don't let it get you!!

Have your garments cleaned regularly, don't wait until spring.

**WELSBY'S  
DRY CLEANING  
"PROMPT SERVICE"**

446 Clark St.

Phone 688



"Professional Prescription Service"

THE  
REXALL DRUG STORE  
IN  
STEVENS POINT  
**WESTENBERGER'S**

"Across from the Postoffice"  
Phone 27



Introducing  
you  
to  
Unexcelled  
Values  
at

The  
**WILSHIRE**  
Shop

Come in and let us  
take care of your  
shoe and accessory requirements.

440 Main St.

Stevens Point

**WHITING-PLOVER PAPER CO.**

Stevens Point, Wis.

MANUFACTURERS OF

*Permanized Papers*

AND

**KEEBORD PAPERS**



**OVER HALF A CENTURY**

**OF**

**"QUALITY WORK"**

**WORZALLA PUBLISHING COMPANY**

*PHONE 267*

200-210 North Second Street

Stevens Point, Wisconsin

**"BOOKS BOUND BY US**

**ARE --**

**' BOUND TO SATISFY ' "**

**NATIONAL BOOKBINDING COMPANY**

Edition Bookbinders — School Annuals — Covers

*PHONE 1780*

200-210 North Second Street

Stevens Point, Wisconsin



## Ah! - - a Capitalist!

Now it's just a penny in a piggy bank. But soon his piggy will be full. Then the pennies will be taken to a real savings bank. There some of them will probably be invested in electric utilities securities because banks prefer sound business-managed electric companies as a dependable investment. Thus the little boy has a personal stake in the electric power industry.

Practically every American has — that's the way our economic system works. It's called capitalism and it's a good system. It helped make America great, and it will continue to provide opportunity for little boys with piggy banks.

WISCONSIN *Public Service* CORPORATION

Universal School Desks

"A Swanke Product"

Manufactured By

**SWANKE INDUSTRIES**

and

**TIGERTON LUMBER  
COMPANY**

Tigerton, Wisconsin

**COST PLUS  
honest MARKUP**



Clayt Crowns and Crew  
are dedicated to the idea  
of delivering the MOST auto  
service for the least  
money. Enough said

North of the Square  
STEVENS POINT

West of the Depots  
WISCONSIN RAPIDS



**CROWNS OF TWO TOWNS**

Crowns Auto Sales  
DeSoto :-: Plymouth :-: Packard

**ARENBERG'S**

Fashionable Jewelry

Since 1884

447 Main St.

Stevens Point

**McAULIFFE  
CORSET SHOP**

117 Strong's Ave.

Phone 999

**HELEN FIEREK**

Millinery and Accessories

119 Strong's Ave.

Phone 1605-J

**SLICKER'S  
TEXACO SERVICE**

216 No. 2nd St.

Phone 583

**FRANK'S HARDWARE**

"Just off the famous Public Square"

117 No. 2nd St.

Phone 2230

**SPOT  
RESTAURANT**

Alex Morton, Prop.

414 Main St.

Phone 95

**GREEN'S**

Style Shop

416 Main St.

Phone 2459

**TUCKER**

Studio and Camera Shop

110 Strong's Ave.

Phone 407

**LEROY'S**

Ladies Ready To Wear

205 Strong's Ave.

Phone 787

**VANITY  
DRY CLEANERS**

206 Clark St.

Phone 237

# INDEX

Administration .....	6	Nelson Hall .....	58, 59
Administrative Staff .....	8	Newman Club .....	19
Alpha Kappa Lambda .....	70	Omega Mu Chi .....	42, 43
Alpha Kappa Rho .....	65	Pan Hell .....	48
Alpha Psi Omega .....	66, 67	Phi Sigma Epsilon .....	46, 47
Band .....	64	Pledging .....	49
Basketball .....	54, 55, 56	Pointer .....	78
Cheerleaders .....	23	President .....	6
Chi Delta Rho .....	44, 45	Primary Council .....	50
College Theater Productions .....	67	Radio Workshop .....	75
Coop .....	80	Regent .....	6
Conservation .....	71	Round Table .....	52
Deans .....	7	Rural Life .....	51
Division Pages .....	10, 11, 34, 35, 60, 61, 82, 83	"S" Club .....	30
Driver Education .....	57	Senior Class .....	85-105
Faculty .....	84-105	Sigma Tau Delta .....	68
Football .....	24-27	Sigma Zeta .....	69
Forum .....	53	Social Studies Club .....	76
Freshman Class .....	12-16	Sophomore Class .....	36, 37
Gamma Delta .....	17	Spring Sports .....	33
Girls' Glee Club .....	73	Staff .....	132
Golf .....	33	Student Council .....	38
Health Service .....	9	Tau Gamma Beta .....	40, 41
Homecoming .....	28, 29	Teacher Education .....	84
Home Ec. Club .....	77	Tennis .....	33
Index .....	132	Track .....	33
Intramurals .....	32	Training School .....	106, 107
Iris .....	79	W.A.A. .....	31
Junior Prom .....	81	Wayland .....	21
L.S.A. .....	18	Wesley .....	20
Maintenance .....	9	W.S.G.A. .....	39
Men's Glee Club .....	72	Y.W.C.A. .....	22
Mixed Chorus .....	74		

## IRIS STAFF

Editor .....	HARRY JOHNSON
Associate Editor .....	VIRGINIA GMEINER
Business Manager .....	ROBERT PUTZIER
Advertising Manager .....	BILL WORZALLA
Photographers .....	DICK FRANCIS, GEORGE STEVENS
Copy Editor .....	SUZANNE SWANKE
Staff .....	JIM GREATHOUSE LUCY CHAPPELL NORMA MAYER NANCIE GOEBEL DONNA ALDERTON ROSEMARY LEAHY
Sports Editor .....	DICK BERNDT
Advertising Assistant .....	PETE THOMAS
Identification Editor .....	HARRIET HENNIG
Assistant .....	MARY DOUVILLE
Typists .....	BETTY ARTZ MARY SEARLES ANGIE WITTMAN BARBARA BEA
Layout Editor .....	RUTH FINCH
Staff .....	MARJORIE FINCH NATHALIE HOGLUND JOANNE GUTH ROBERTA HENDERSON DONA DAHM
Engraving Editor .....	DON SCHULTZ
Business Assistant .....	ROBERT MARSH
Art Editor .....	JIM GOETZ
Senior Editors .....	MARGARET JONES PHYLLIS MYKLEBY PHYLLIS KASPER JANICE SISLEY
Photographic Scheduling .....	EDWARD PLISKA LLOYD PETERSON
Editorial Adviser .....	HARRIET WRIGHT
Business Adviser .....	HAROLD TOLO
Photographic Adviser .....	GILBERT FAUST