

Iris

'51

IRIS

PUBLISHED BY THE
STUDENTS OF

**CENTRAL
STATE
COLLEGE**

BROCK ENGRAVING CO.

ENGRAVER

WORZALLA PUBLISHING CO.

PUBLISHER

1951

STEVENS POINT, WIS.



Because he was a friend,
available whenever one of his
boys needed him for help or
just moral support,

Because he was more than
a coach, more than a teacher;
because he was a gentleman,
one who believed in the right
and exercised what he believed,

Because he worked for the
good of the community through
the Physical Education Depart-
ment, bringing the school closer
to the people,

Because he began activities
of usefulness, a physical educa-
tion system for the V-5's, a
playground and sports program
for Stevens Point,

Because he was a square
shooter, an all around coach
and a friend who kept his door
open for us at CSTC,

We dedicate the 1951 Iris
to the memory of Coach George
R. Berg, who died October 1,
1950.

(1942 - 1950)





**COLLEGE PRESIDENT
WILLIAM C. HANSEN**



**COLLEGE REGENT
WILSON DELZELL**



Dean of Liberal Arts
Warren Jenkins



Dean of Men
Herbert Steiner



Dean of Women
Elizabeth Pfiffner



Colman, Susan E.
English, Education,
Director of Primary
Education



Carlsten, Edna
Art, Education



Harris, Albert E.
Psychology, Philo-
sophy, Education

Williams, Mildrede L.
Second Grade Supervisor
Education

Mason, Syble E.
Assistant Librarian

Boylan, Kenneth W.
Mathematics

Wright, Harriet M.
Mathematics
Education

Kampenga, Nelis R.
Head Librarian
Library Science

Nixon, Floyd O.
Mathematics
Education

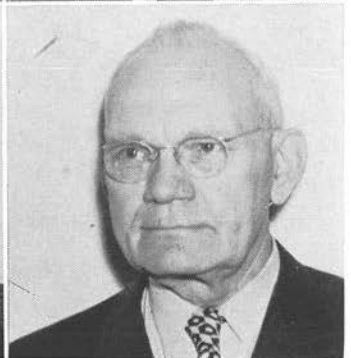
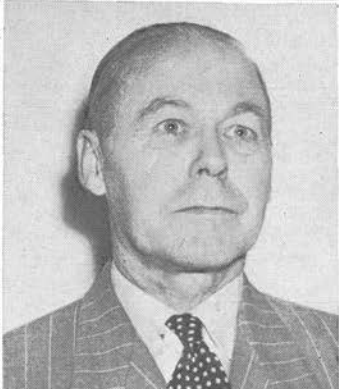
Hanson, Gertie L.
Geography, Radio
Workshop, Education

Pieper, Edgar
Physical Education

Blodgett, Alice
English

Quandt, Hale F.
Coach, Physical Education

Angel, Margaret
Director of Nelson
Hall



Lewis, Robert S.
Geography
Education

Wilson, Emily
English
Home Economics

Eagon, Burdette
Sixth Grade Supervisor
Education

Rightsell, Raymond M.
Physics

Knutzen, Norman E.
English
Director Men's Glee Club

Allen, Bessie May
Home Economics

Reppen, Nels O.
Sociology, Economics
Education

Elstad, Edna J.
Assistant Director
of Nelson Hall

Heenan, David
History

Mott, Joseph
English
Psychology

Isaacson, Pauline H.
Speech
History

Lyness, Arthur S.
Biology



Epple, Arol C.
Biology

Hansen, Alice F.
Seventh Grade
Supervisor

Wieval, Bernard F.
Biology
Conservation

Michelsen, Peter J.
Music Director

Smith, Mary Elizabeth
English

Burroughs, Leland M.
English, Dramatics
Speech

Pierson, Edgar F.
Biology

Bainter, Monica
Physics

Crow, Frank
History
Track Coach

Van Arsdale, Gladys
Third Grade
Supervisor
Education

Hicks, James R.
Chemistry

Trytten, Roland A.
Chemistry



Varney, Vern V.
Radio

Heel, Helen M.
Music

Schmeeckle, Fred J.
Conservation
Education

Diehl, Leah
Fourth Grade Supervisor
Education

Faust, Gilbert
Chemistry

Samter, Mary S.
First Grade Supervisor
Education

Roach, May M.
English
Sociology
Acting Rural Director

Davis, Mildred
Languages

Glennon, Bertha
English
Education

Kampenga, Dorothy
Librarian of
Training School

Kerst, Marjorie S.
Rural Supervisor

Swallow, Marie D.
Secretary of
Training School



Cutnaw, Edith
Seventh Grade
Supervisor

Tolo, Harold M.
History

Levin, Adeline L.
Physical Education

Ritchie, Margaret M.
Assistant Librarian

Kremple, Frederick A.
History, Political
Science

Specht, Raymond E.
Geography, Driver
Education

Meston, Helen
Home Economics
English

Raddant, Beatrice
Kindergarten
Supervisor
Education

Sylvester, Walter R.
Biology, Geology
Conservation

Pieper, Evelyn
Rural Supervisor

Moser, Miriam
Physical Education

Pierce, Burton R.
Eighth Grade
Supervisor



Office Staff: Delores Laszewski, Carolyn Rolison, Joanne Cerney, Sidone Anderson, Grace Pehoski

Maintenance: Regina Przybylski, Lawrence Davis, Victor Okray, John Rasmussen, Myron Haase, Steve Skalski, Vernon Spence, Frank Mansavage

Health: Miss Mary Neuberger, Delores Roy, Dr. Henry Anderson



SENIORS

An enviable stage of refinement, knowledge, and maturity is attributed to the seniors by underclassmen. The seniors are those who are able to demand respect for themselves in their respective fields. Because they obtain so much wisdom and are able to draw references from many experiences, they become the counselors for the innocents.

Seniors will well remember all the chatter about practice teaching, interviews, lesson plans, and activities that took place at the Training or Demonstration schools. This is the year of accepting positions — signing contracts. Organizations led by seniors wonder how they shall carry on after so many of their members have been graduated.

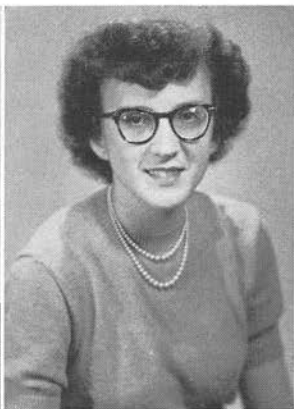
This is also the year for the seniors to display their talents in the planning of a senior ball. Through the effective work of a capable committee, this year's ball became a "Marshmallow World" for all who attended. King Lloyd Peterson and his Queen, Mary Ann Petersen led the grand march that high lighted the gala occasion created especially to honor the seniors. Others who served as class officers were Charles Bruce, vice president; Ken Garska, secretary; and George Mosey, treasurer. The class received its guidance from Miss Bertha Glennon and Mr. Robert Lewis.

Spring dinners were given to honor graduating seniors. The WSGA banquet in May for graduating students as well as sorority and fraternity parties were representative of such festivities.

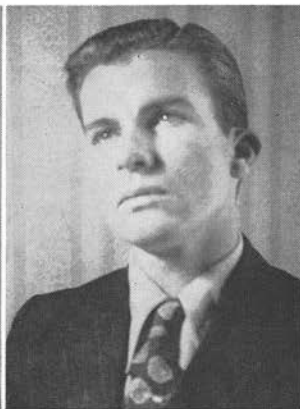
There were last minute things to attend to — renting gowns, sending out announcements, and filling out application blanks. Seniors will never forget marching up to receive their degrees or diplomas on commencement day. These memories will linger long after they have been gone from CSTC.



GREATHOUSE,
GEORGE
Port Washington
Secondary; Major:
History. Minors:
Social Science,
English.
Phi Sigma Epsilon,
Pan Hell Council,
Editor Iris,
Pointer, Alpha
Gamma, Sigma
Tau Delta



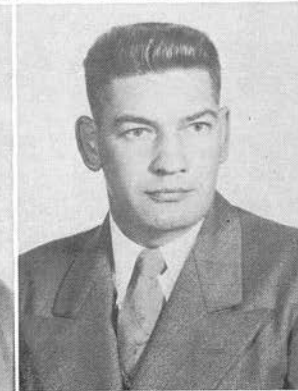
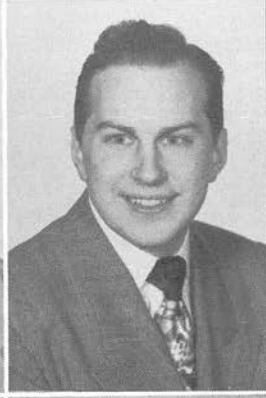
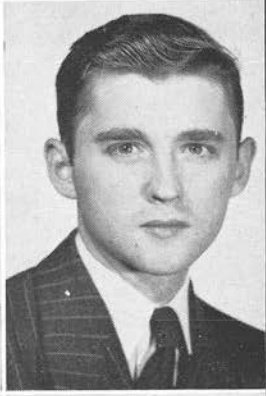
SCHWAB, MARIAN
Rhinelanders
Major: Rural.
Rural Life Club,
Newman Club.



LARSEN, DONALD
Antigo
Secondary; Major:
History. Minors:
English, Social
Science.
Alpha Gamma,
Trigon.



STOEHR, JANICE
Gresham
Major: Rural.
Rural Life Club,
Newman Club.



MOSEY, GEORGE
Nekoosa
Secondary; Major:
General Science.
Minors: Chemistry,
Mathematics.
Newman Club, Chi
Delta Rho.

WILLIAMSON, ILA
Brandon
Major: Primary.
Tau Gamma Beta,
Primary Council,
Wesley, Mixed
Chorus.

LANG, RUTH
Princeton
Major: Primary.
Primary Council,
W.S.G.A., Mixed
Chorus, Y.W.C.A.,
Wesley, Iris.

GOETZ, WILLIAM E.
Stevens Point
Secondary; Major:
Conservation.
Minors: Biology,
Social Science,
History.
Alpha Kappa
Lambda, Men's
Glee Club.

HORN, RUDOLPH
Chili
Secondary; Major:
Geography. Minors:
History, Biology.
Mixed Chorus,
Men's Glee Club,
International Rela-
tions Club, Forum,
Social Studies Club.

LALEIKE, HELEN
Stevens Point
Secondary; Major:
History. Minors:
Geography, English.
Omega Mu Chi,
Band, Orchestra,
Glee Club, Forum,
Pan Hellenic
Council.

LALEIKE, FRED
Stevens Point
Secondary;
Major: Geography.
Minors: English,
History.
Pointer, Chi Delta
Rho, Forum.

KARSTEN, ROBERT
Stevens Point
Major: Intermediate.
Men's Glee Club
Accompanist, Mixed
Chorus, Round
Table.

VESELAK, KEN
Antigo
Major: Intermediate
and Upper Ele-
mentary, History.
Glee Club, Newman
Club, Football,
"S" Club, Chi
Delta Rho, Social
Studies Club.

SPENCER, FAITH
Waupaca
Major: Rural.
Rural Life Club,
Glee Club, Psi
Beta Psi.

HENDERSON,
ROBERTA
Mosinee
Secondary; Major:
English. Minors:
Biology, French.
Iris, Sigma Tau
Delta, Gamma
Delta, W.S.G.A.
Executive Board.

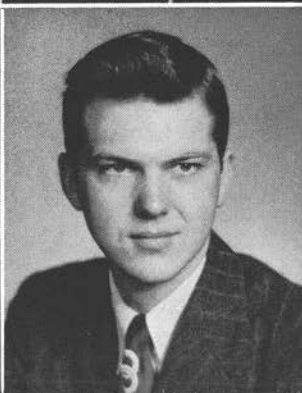
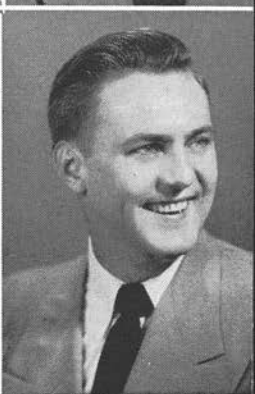
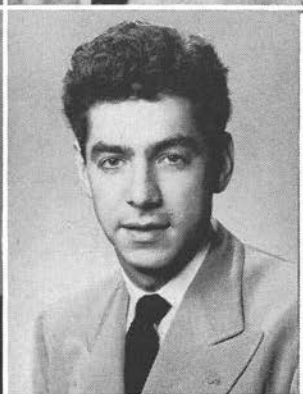
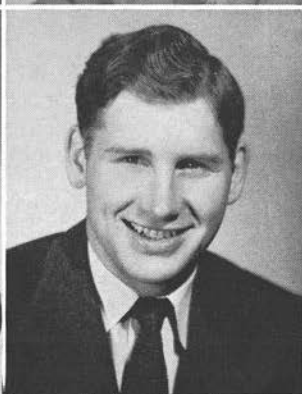
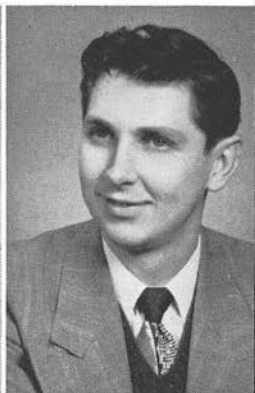
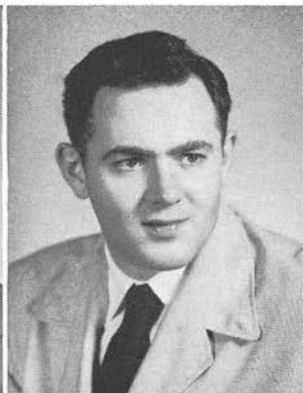
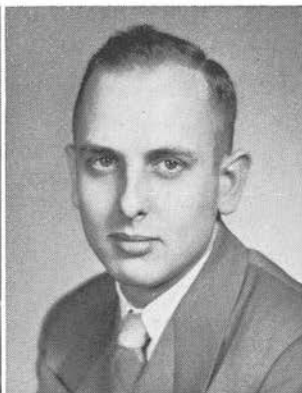
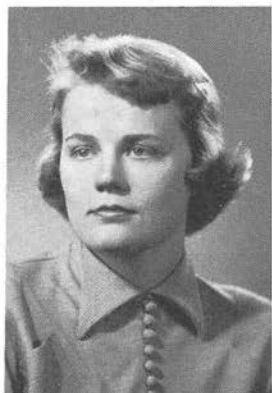
WEBER, NORMA
Stratford
Major: Rural.
Rural Life,
Wayland Club.

ELLINGSON,
RICHARD
Iola
Secondary; Major:
Conservation.
Minors: Biology,
History.
Alpha Kappa
Lambda, Men's
Glee Club, Mixed
Chorus, L.S.A.,
Intramurals.

MYERS, MARJORIE
Iola
Major: Primary.
Tau Gamma Beta,
Glee Club, Mixed
Chorus, Wayland
Club.

RADDANT,
EUGENE
Tomahawk
Secondary; Majors:
Conservation,
Biology. Minor:
Mathematics.
Alpha Kappa
Lambda, Forum.

GARSKA,
KENNETH J.
Shawano
Secondary; Major:
Chemistry. Minors:
Mathematics,
Physics.
Chi Delta Rho,
"S" Club, Sigma
Zeta, Tennis,
Pointer, Newman
Club.



KAVANAUGH,
MARIAN
Green Bay
Major: Rural.
Newman Club,
Rural Life Club.

BRUCE, CHARLES
Sparta
Major: Intermediate
and Upper Ele-
mentary.
Phi Sigma Epsilon.

ROBERTS, RALPH
Fond du Lac
Secondary; Major:
English. Minors:
Speech, Spanish.
Phi Sigma Epsilon,
Sigma Tau Delta,
Dramatics, Intra-
mural Basketball
and Football,
Forum.

KITZROW,
GERALD T.
Stevens Point
Major: Intermediate
and Upper Ele-
mentary. Minor:
English.
Band, Men's Glee
Club, Phi Sigma
Epsilon, Pointer
Staff.

HALL, JACQUELINE
Lake Tomahawk
Major: Intermediate.
Round Table,
Omega Mu Chi,
Wesley, W.S.G.A.,
Modern Dance.

PETRANEK,
ROBERT
Rhineland
Secondary; Major:
History. Minors:
Geography,
Spanish.
Phi Sigma Epsilon.

JAESCHKE, DON
Tomahawk
Secondary; Major:
English. Minors:
History, Biology.
Phi Sigma Epsilon,
Sigma Tau Delta.

COLE, ROBERT
Nekoosa
Secondary; Major:
Geography. Minors:
History, English.
Phi Sigma Epsilon,
Student Council,
Forum.

LANGE, ELAINE
Manawa
Major: Rural.
Gamma Delta,
Rural Life,
Mixed Chorus,
Pointer Staff.

COOK, ROBERT
Unity
Secondary; Major:
Conservation.
Minors: Biology,
General Science.
Men's Glee Club,
Alpha Kappa
Lambda, Intramural
Basketball and Vol-
leyball, Forum,
Phi Sigma Epsilon,
Student Council.

BESTUL, ROBERT
Scandinavia
Secondary; Major:
History. Minors:
Music, Mathematics.
Psi Sigma Epsilon,
Band, Mixed
Chorus, Alpha
Kappa Rho, Pan
Hellenic Council.

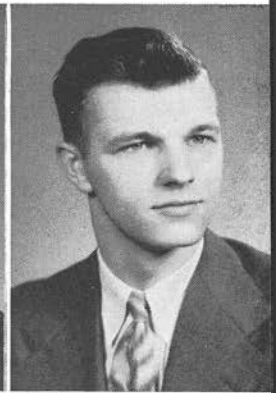
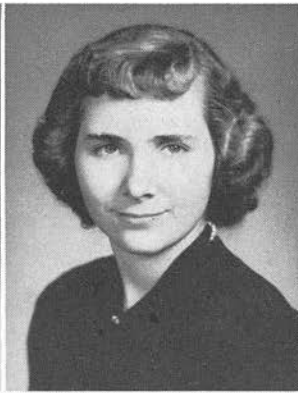
HOHENSEE,
GEORGE
Fond du Lac
Secondary; Major:
English. Minors:
History, Geography,
Psychology.
Golf Team, "S"
Club, Pointer,
Newman.

KRUSE, CARLA
Iola
Major: Intermediate.
L.S.A., Alpha
Kappa Rho, Tau
Gamma Beta,
Round Table, Band,
Mixed Chorus.

FRANCE,
MARY LOU
Wausau
Major: Rural.
W.A.A., Rural Life
Club, Newman
Club, W.S.G.A.

GMEINER,
VIRGINIA
Waupaca
Secondary; Major:
English. Minors:
Speech, Biology.
Alpha Psi Omega,
Sigma Tau Delta,
Omega Mu Chi, Iris,
Radio Workshop,
W.S.G.A. Board,
Student Council,
Newman Club, Pan
Hellenic Council,
Forum, Band.

KNUTSON, ARLEEN
Waupaca
Major: Intermediate.
Y.W.C.A., L.S.A.,
Round Table,
W.S.G.A., Pointer
Staff.



PLISKA, EDWARD
Stevens Point
Major: Intermediate
and Upper Ele-
mentary.
Chi Delta Rho,
International
Relations Club,
Vice-President
Student Council,
Sophomore Class
President, Radio
Workshop, Business
Manager Pointer,
Iris.

ROTHWEILER,
EUNICE
Milwaukee
Major: Intermediate.
Gamma Delta,
W.S.G.A., Round
Table.

PIERCE, KATHLEEN
Stevens Point
Major: Primary.
Wesley, Band,
Mixed Chorus,
Alpha Kappa Rho,
Omega Mu Chi,
Primary Council.

KLESMIT,
CLARENCE
Stevens Point
Major: Intermediate
and Upper
Elementary.
Alpha Kappa
Lambda.

BOETTCHER,
JOSEPH
Merrill
Secondary; Major:
English. Minors:
Speech, History.
Sigma Tau Delta
President, Pointer
Editor, Student
Council, Forum.

PETERSON, LLOYD
Schofield
Secondary; Major:
Mathematics.
Minors: Physics,
History.
Glee Club, Chi
Delta Rho, Mixed
Chorus, President
of Senior Class,
Forum, Iris.

MARQUARD,
GILMAN
Stevens Point
Major: Rural.
Rural Life,
Newman Club.

WILLIAMS,
MADELINE
Amberg
Secondary; Major:
Home Economics.
Minors: English,
Biology.

JOHNSON, MARVIN
Eagle River
Secondary; Major
Mathematics.
Minors: Physics,
Conservation.
Chi Delta Rho,
Alpha Kappa
Lambda, Forum.

LUND, RICHARD
Stevens Point
Secondary; Major:
Conservation.
Minors: Physical
Education,
Geography.

GILBERTSON,
BETTY
Stevens Point
Major: Intermediate.
Alpha Kappa Rho,
Orchestra, Mixed
Chorus, Band,
W.S.G.A., Round
Table, Omega
Mu Chi.

BOHL,
HERMELINDA
Colfax
Secondary; Major:
Home Economics.
Minors: General
Science, English.
Newman Club,
W.A.A., Secretary
of Home Economics
Club.

PLATH, WILLIAM
Spencer
Major: Intermediate
and Upper
Elementary.

ALDERTON,
DONNA
Laona
Secondary; Major:
English. Minors:
Speech, Biology.
Alpha Psi Omega,
Sigma Tau Delta,
Radio Workshop,
Newman Club, Iris.

MARKING,
HARRIET
Owen
Major: Intermediate.
Band, Orchestra,
Glee Club, Mixed
Chorus, W.S.G.A.,
L.S.A., Round Table.

HENDRICK,
DONALD
Mosinee
Secondary; Major:
Biology. Minors:
Physics, Math-
ematics.
Forum, Men's Glee
Club, Chi Delta
Rho, Pan Hellenic
Council.



MOZUCH, IRVING
Stevens Point
Junior High;
Major: History.
Minors: Geography,
English.
Round Table,
Newman Club.

FRIBERG,
ISLA MAE
Waupaca
Major: Primary.
Omega Mu Chi,
Radio Workshop,
Primary Council,
Mixed Chorus.

BABCOCK, BONITA
Marion
Major: Primary.
Primary Council,
W.S.G.A., Tau
Gamma Beta,
Wesley, W.A.A.

BALTZ, DEAN
Wisconsin Rapids
Major: Intermediate.
Wayland Club,
Radio Workshop,
Round Table.

SCHANTZ,
MARCELLA
Stevens Point
Major: Intermediate.
W.A.A., Glee Club,
Mixed Chorus, Psi
Beta Psi, Radio
Workshop, Round
Table, W.S.G.A.,
Home Economics
Club.

SAUTER,
KENNETH
Stevens Point
Major: Intermediate.

OBINGER,
HARRIET
Woodruff
Major: Intermediate.
W.A.A., Basketball
Sportshead, Wesley,
Round Table,
Modern Dance.

HAVITZ, EDWARD
Junction City
Secondary; Major:
History. Minors:
Social Science,
Geography.
"S" Club, Gamma
Delta, Track,
Forum.

HIGGINS,
BARBARA
Wisconsin Rapids
Major: Primary.
Glee Club, Mixed
Chorus, Pointer,
Primary Council,
W.S.G.A.

SCHOFF, ARTHUR
Marshfield
Major: Intermediate
and Upper
Elementary.
Round Table,
L.S.A., Student
Council.

LEWIS, BARBARA
Augusta
Secondary; Major:
Mathematics.
Minors: English,
Biology.
Tau Gamma Beta,
Sigma Tau Delta,
Sigma Zeta,
Pan Hell Council,
Pointer, Inter-
sorority Council.

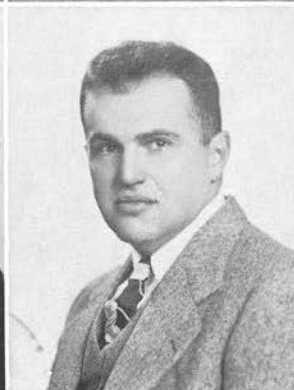
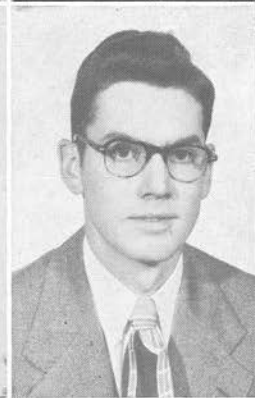
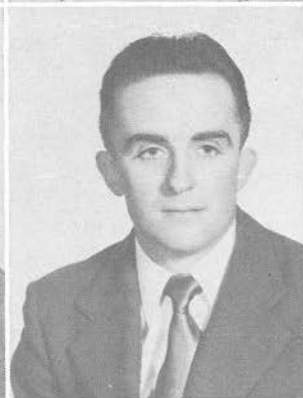
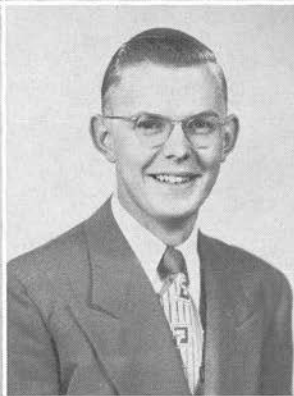
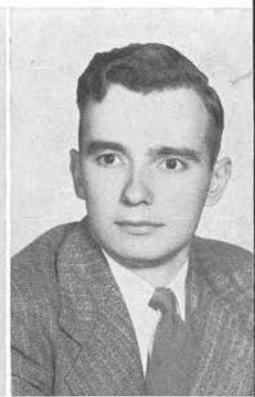
FEIT, DONALD
Knowlton
Major: Rural.
Rural Life Club.

PARKINSON,
GALEN
Owen
Secondary; Major:
Conservation.
Minors: Biology,
History.
Alpha Kappa
Lambda, Sigma
Zeta, Gamma
Delta, Young
Republicans.

PRECOURT,
DOROTHY
Stevens Point
Secondary; Major:
Biology. Minors:
Chemistry, English.
Sigma Zeta, Sigma
Tau Delta,
W.S.G.A., Forum.

SHERMAN, LOUISE
Plainfield
Major: Rural.
Rural Life,
W.A.A., Newman
Club.

LORENZEN,
RICHARD
Stevens Point
Secondary; Major:
Mathematics,
Minors: Physical
Education, Physics.



ATTLESON,
MILDRED
Strong's Prairie
Major: Rural.
Rural Life Club,
Pointer Staff.

KOCH, WILLIAM
Wausau
Secondary; Major:
History. Minors:
Social Studies,
Physical Education.
Men's Glee Club,
Football, Track,
Social Studies Club,
"S" Club,
International
Relations Club.

CUILA, CONNIE
Knowlton
Major: Rural.
Rural Life Club,
Newman Club,
W.A.A.

KOTT, ROYAL
Crandon
Secondary; Major:
Mathematics.
Minors: Physics,
History.
Forum.

BENSON, JAMES
Wisconsin Rapids
Secondary; Major:
Conservation.
Minors: Biology,
Mathematics.
Alpha Kappa
Lambda,
Newman Club,
"S" Club, Tennis.

MEHNE,
BETTY LOU
Almond
Major: Intermediate.
Minor: Physical
Education.
W.A.A., Alpha
Kappa Rho, Round
Table, W.S.G.A.,
Psi Beta Psi,
Gamma Delta,
Y.W.C.A., Band,
Glee Club, Mixed
Chorus, Pan
Hellenic Council.

JOHNSON, HARRY
Merrill
Secondary; Major:
English. Minors:
History,
Mathematics.
Iris, Student
Council President,
Sigma Tau Delta,
Forum.

GEENEN, MARY
Freedom
Major: Intermediate.
Newman Club,
Great Books.

KNUF, EVELYN
Unity
Major: Rural.
Rural Life Club.

COX, WILBAR
Wabeno
Secondary; Major:
General Science.
Minors:
Mathematics,
Physical Education.

SCHADEWALD,
MARY
Stevens Point
Secondary; Major:
Biology. Minors:
Physical Education,
History.
Forum, Sigma Zeta,
Omega Mu Chi,
Wesley, W.S.G.A.
Board.

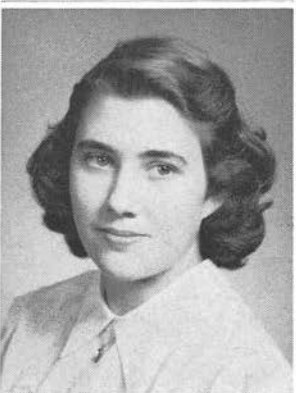
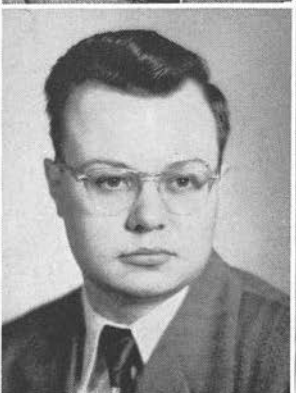
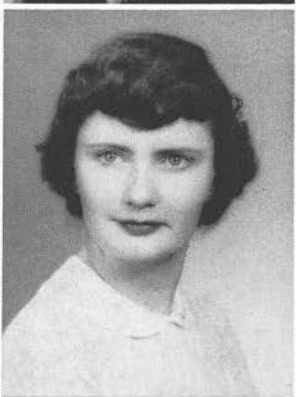
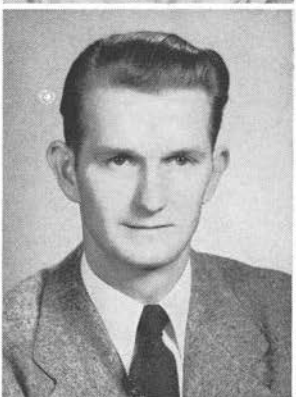
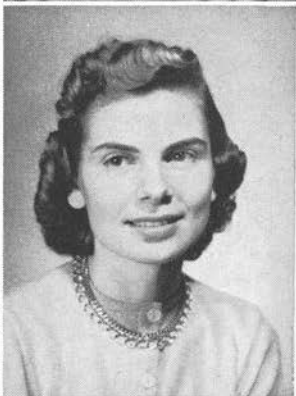
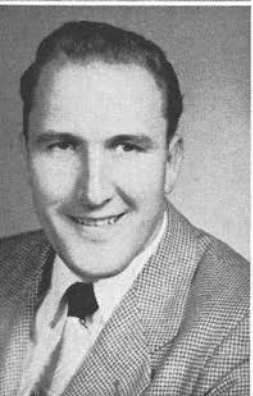
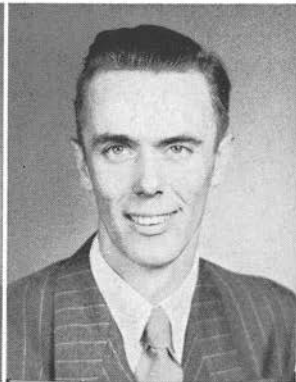
MARTIN, HARLAN
Amherst
Secondary; Major:
Mathematics.
Minors: Physics,
Physical Education.

PETERSON,
HARVEY
Wausau
Secondary; Major:
Chemistry. Minors:
Physics,
Mathematics.
Sigma Zeta.

WOTRUBA,
DOROTHY
Junction City
Major: Rural.
Newman Club,
Rural Life.

KERR, ROBERT
Wisconsin Rapids
Secondary - Non-
Professional.
Major: Conserva-
tion. Minors:
Geography,
Biology.
Sigma Zeta, Alpha
Kappa Lambda.

WITTER, DELORES
Wausau
Major: Rural.
Rural Life Club,
Psi Beta Psi,
Gamma Delta.



GRYNIIEWSKI,
JOHN
Gilman
Major: Intermediate
and Upper
Elementary.

ELLINGSON,
BEVERLY
Iola
Major: Primary.
Primary Council,
L.S.A., W.S.G.A.,
W.A.A., Omega
Mu Chi.

WARNER, BRICE
Plainfield
Major: Intermediate.
Round Table.

KRANSKI,
GERMAINE
Major: Rural.
Rural Life, Newman,
Psi Beta Psi.

ELLIS, LORAN
Plainfield
Major: Intermediate
and Upper
Elementary.
Round Table.

FINCH, MARJORIE
Stevens Point
Major: Primary.
Omega Mu Chi,
Mixed Chorus,
Iris, Glee Club,
Y.W.C.A., W.A.A.,
Primary Council.

BARNES, BEVERLY
Richland Center
Secondary; Major:
Home Economics.
Minors: Music,
Science.
Band, Orchestra,
Mixed Chorus, Tau
Gamma Beta, Alpha
Kappa Rho, Home
Economics Club,
W.S.G.A.

DAHNER, EILEEN
Neillsville
Major: Intermediate.
Band, Orchestra,
Mixed Chorus, Tau
Gamma Beta,
Round Table, Young
Republicans,
W.S.G.A., Iris.

OELRICH, LOUISE
Spencer
Major: Primary.
Glee Club, Mixed
Chorus, Gamma
Delta, Y.W.C.A.,
Primary Council,
W.S.G.A., Dorm
Council.

PUTZIER, ROBERT
Wisconsin Rapids
Major: Intermediate.
Minor: Geography.
Gamma Delta, Iris.

THOMPSON, MARY
Antigo
Major: Intermediate.
Minor: Art.
W.A.A., Band, Glee
Club, Trigon, Mixed
Chorus, Wesley.

FURSTENBERG,
EDWARD
Marshfield
Secondary; Major:
Mathematics.
Minors: Physics,
Chemistry.
Chi Delta Rho,
Sigma Zeta, Alpha
Psi Omega, Radio
Workshop, Forum.

GETLINGER, JANE
Rudolph
Major: Rural.
Pointer, Gamma
Delta, Band, Girls'
Glee Club.

ANDREWS,
ROBERT
Stevens Point
Secondary; Major:
History. Minors:
Geography, Social
Studies.

SEVERSON,
DOROTHY
Nekoosa
Major: Rural.
W.A.A., Gamma
Delta, Rural Life,
W.S.G.A.

HOLM, NORVIN
Tigerton
Secondary; Major:
Mathematics.
Minors: Physics,
Geography.
Men's Glee Club,
Mixed Chorus,
Forum, Chi Delta
Rho, Sigma Zeta,
L.S.A., Football.



KARIER,
CLARENCE
Friendship
Secondary; Major:
History. Minors:
Geography, Social
Studies.
Social Science Club,
International
Relations Club,
Radio Round Table,
Phi Sigma Epsilon.

MORRIS, IRENE
Mosinee
Major: Primary.
W.S.G.A., Newman,
Primary Council,
Cheerleader, Tau
Gamma Beta,
Homecoming
Queen.

PETERSON,
PHYLLIS
Medford
Secondary; Major:
Home Economics.
Minors: History,
Biology.
Tau Gamma Beta,
Pan Hellenic
Council, Home
Economics Club,
Mixed Chorus, Glee
Club, Band.

MOORE, JACK
Laona
Major: Intermediate
and Upper
Elementary.
Y.G.O.P.

SCHNEIDERS, DON
Marathon
Major: Rural.
Basketball, Rural
Life Club, Newman.

TESSMER, AMY
Athens
Major: Upper
Elementary. Minor:
History.
Pointer Staff,
W.A.A., Round
Table.

BOWERS, ALAN
Marion
Secondary; Major:
Biology. Minors:
Conservation,
Chemistry, History.
Phi Sigma Epsilon,
Alpha Kappa
Lambda, L.S.A.,
Band, Forum,
Orchestra.

GERTSCHEN,
PHYLLIS
Wausau
Major: Rural.
Rural Life, Tau
Gamma Beta,
W.A.A.

MCCUTCHEON,
DALE
Wausau
Secondary; Major:
Biology. Minors:
English, French.
Newman, Sigma
Zeta.

CLINTSMAN,
NELLIE
Greenwood
Major: Rural.
Wesley, Rural Life.

HARRISON, PAT
Wausau
Major: Primary.

FEIGLEY,
BERNARD
Mattoon
Secondary; Major:
Chemistry. Minors:
Biology,
Mathematics.
Chi Delta Rho,
Sigma Zeta.

TELLOCK, CAROL
Clintonville
Major: Rural.
Rural Life,
Wesley.

GUENTHNER, RAE
Antigo
Major: Primary.
Trigon, Orchestra,
Mixed Chorus,
Primary Council.

WHELIHAN,
EDWARD
Stevens Point
Major: Intermediate
and Upper
Elementary.
Men's Glee Club,
Phi Sigma Epsilon,
Intramural Sports.

OKRAY, ROBERT
Stevens Point
Major: Intermediate.
Phi Sigma Epsilon,
Alpha Kappa
Lambda, Round
Table.



MENZEL, BRUCE
Stevens Point
Major: Intermediate
and Upper
Elementary,
"S" Club, Basket-
ball, Golf, Round
Table, Radio
Workshop.

NEERHOF, MURIEL
Waldo
Secondary; Major:
Biology. Minors:
Physical Education,
Geography.
Wesley, Glee Club,
Mixed Chorus,
W.A.A., Psi Beta
Psi, W.S.G.A.,
Forum, Junior Class
President, Dorm
President,
Interfaith.

SCHWEBKE,
JULIE DEAN
Wittenberg
Major: Primary.
Girls' Glee Club,
Mixed Chorus,
Band, W.A.A.,
Primary Council,
Dorm Council,
Omega Mu Chi.

OMERNIK,
DOROTHY
Polonia
Major: Rural.
Newman Club,
Rural Life Club,
Psi Beta Psi,
Mixed Chorus,
W.A.A.

HANSEN, VIOLET
Scandinavia
Major: Rural.
Rural Life Club,
Psi Beta Psi,
Girl Scouts.

MACINTYRE,
KATHRYN
Fond du Lac
Major: Primary.
Primary Council,
Wesley.

MARTH, DELPHINE
Hamburg
Major: Rural.
Rural Life Club,
Gamma Delta,
Glee Club, Psi
Beta Psi,
President House
Council.

MEAD, MAURICE
Rhineland
Secondary; Major:
Chemistry. Minors:
Physics,
Mathematics.
Newman Club,
Student Council,
Chi Delta Rho,
Alpha Psi Omega,
Radio Workshop.

BRENNER, JEANNE
Waukesha
Major: Primary.
Tau Gamma Beta.

CATTANACH,
MARGARET
Granton
Major: Rural.
Rural Life Club,
Wayland Club.

STEVENS, GEORGE
Marinette
Secondary; Major:
Chemistry, Minors:
Mathematics,
English.
Wesley, Sigma Zeta,
Iris, Pointer,
Junior Academy of
Science.

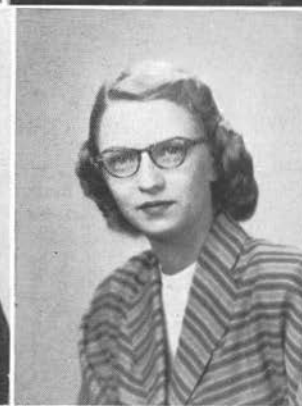
BRAEM, ALLEN
Marshfield
Major: Mathematics.
Minors: Physics,
Geography.
Sigma Zeta, Pointer,
Forum.

NELSON, PHILIP
Iola
Secondary; Major:
History. Minors:
Physical Education,
Geography.

DOWD, THEODORE
Amberg
Major: Intermediate
and Upper
Elementary.
Men's Glee Club,
Alpha Kappa
Lambda, Mixed
Chorus, Wesley,
Pointer Staff, Round
Table, Junior
Academy of
Science, Scout-
master.

VENN, RAYMOND
Elcho
Secondary; Major:
Mathematics.
Minors: Chemistry,
Physics.
Pointer Staff,
Sigma Zeta, Forum.

STORM, RALPH
Merrill
Secondary; Major:
History. Minors:
Geography, Social
Studies.
Gamma Delta,
Social Studies Club,
Boy Scout Training,
College Theatre.



BUSS, MARY JANE
Wittenberg
Secondary; Major:
Home Economics.
Minors: Biology,
History.
Home Economics,
Newman, W.S.G.A.,
Forum.

KONOP,
CATHERINE
Milladore
Major: Rural.
Radio Round Table,
Pointer, Library
Staff, Rural Life,
Newman.

STURZL, RAE
Rhineland
Major: Intermediate.
Radio Workshop,
W.A.A., Wesley,
Forum.

DRAEGER,
MILDRED
Marion
Major: Rural.
Gamma Delta,
Pointer Staff,
Y.W.C.A.

SARGENT,
DONALD
Wisconsin Rapids
Secondary; Major:
Conservation.
Minors:
Geography,
Biology.

PLACE, JEROME
Jacksonport
Secondary; Major:
Geography. Minors:
History, Biology.
Wesley, Canterbury,
Mens Glee Club,
Mixed Chorus,
Inter-faith Council.

LUHM, JOHN
Wautoma
Secondary; Major:
History. Minors:
English, Biology.
Alpha Kappa
Lambda, Forum,
Chi Delta Rho,
Social Studies Club.

BOEHME, NANCY
Brandon
Major: Primary.
Minor: Music.
Alpha Kappa Rho,
Band, Mixed
Chorus, Primary
Council.

HOLM,
ELIZABETH
Tigerton
Major: Rural.
Tau Gamma Beta,
L.S.A., Rural Life,
Mixed Chorus.

KRUEGER, LORNA
Tigerton
Major: Rural.
Rural Life, Gamma
Delta, W.A.A., Tau
Gamma Beta.

ZANELLA,
FLORENCE
Iron Belt
Major: Primary.
W.A.A., Primary
Council, Psi Beta
Psi, Newman,
W.S.G.A.

HANKE, CHARLES
Wausau
Major: Intermediate
and Upper
Elementary Major:
Geography. Minors:
History, Physical
Education, Football,
Men's Glee Club,
"S" Club.

HUMMEL,
ELEANOR
Schofield
Major: Rural.
Rural Life, Omega
Mu Chi, Dorm
Council, Gamma
Delta.

JONES, DELORES
Bryant
Secondary; Major:
History, Minors:
Geography, English.
W.A.A., Forum, Iris,
Social Science Club,
Sigma Tau Delta.

BART, WILLIAM
Neenah
Secondary; Major:
Conservation.
Minors: Biology,
Physical Education,
Chi Delta Rho,
"S" Club, Tennis,
Alpha Kappa
Lambda, Student
Eating Co-op
Director.

RUFFING, ELAINE
Marshfield
Major: Primary.
Primary Council,
Psi Beta Psi,
Newman, Pointer,
W.S.G.A., Mixed
Chorus, W.A.A.

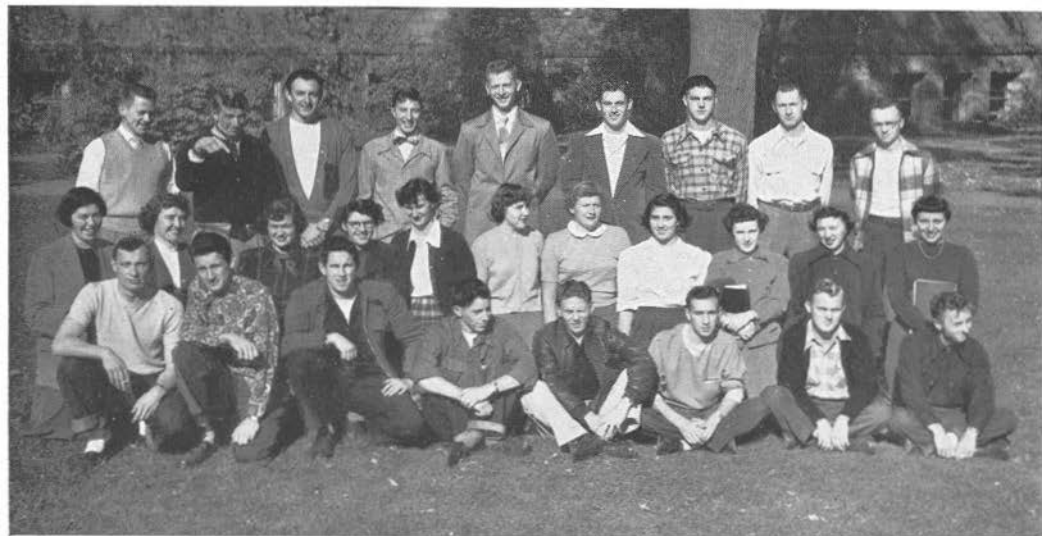
CLASSES

To most freshmen their first year at college is their first year away from home; it is a year of new developments and experiences. New friends are found, new courses taken. Characteristic of a freshman study list is speech, freshman composition, and a five credit science lab. Their first association with social activities is in a religious or music organization. To make freshmen feel like a working part of the group, upper classmen usually assign them the task of clean-up after a meeting. They attend class meetings, faculty receptions, and conferences with the Deans. "Big sisters" entertain "little sisters" at get acquainted parties. The fellows try their hand at sports. As tradition deems it, the freshmen are responsible for the fire wood used at the bonfire at Homecoming time, and a "come as you are" dance afterward. By the beginning of the second semester, a change can be seen in the motley group that invaded the campus in the fall. It has become a coordinated group with mutual interests. Sororities and fraternities recognize usable material, and some freshmen become pledges of the organizations. Soon thereafter, ribbons, bows, and paddles come into view. Those chosen for leaders of this year's freshman class were Dave Ross, president; Winston Wolfe, vice-president; Jean Ferdon, secretary; and Richard Wiener, treasurer.

The sophomores, who occupy the second rung of the educational ladder, elected as their officers this year Bob Flint, president; Frank DeGuire, vice-president; Arline Meister, secretary; and Rollie Krueger, treasurer. Leaving behind bewilderment that they collected during their freshman year, the sophomores leap ahead to take an active part in various school activities and social functions. This is the year they must choose the course in which they shall continue throughout the remaining years of school. The class has lost many members since its freshman days. A little polish appears; many ragged edges have disappeared. As a group, the sophomores are usually the hardest workers. They are becoming more mature, and are preparing themselves for responsibilities that they must take upon themselves next year as juniors.

Ready to assume the leadership on the campus are the juniors, who occupy the third rung of the ladder. This is the year for preparation of actual teaching — getting ready to go out into the field. Education courses appear on the study list. Bits of wisdom and practical philosophy are given out in such classes as Education 223. Teaching units are planned, observations begun. Some juniors begin practice teaching the second semester. Trips to the Training school for classes or observations become a common thing. This is the year of the big prom. King Chet Polka and his Queen, Carol Collins, acted as the regal pair for this night of nights, leading the grand march while the other officers, Gordon Sorenson, vice-president; Nancy Sannes, secretary; and Gordon Fairbert, treasurer, followed next in line. Because of the tireless efforts of persevering committees, that night in May will long be remembered. Some juniors look toward the future contemplating service in the armed forces of the country. Most of them are quite certain that if all goes well, they will be at CSTC next year striving to reach the fourth and last rung of the ladder.





JUNIORS

Top: Greathouse, G, Lawrie, M., Skoronski, P., Hirzy, I., Schroeder, C., Douville, M., Mayer, N., Thirkill, M., Domack, A., Dehlinger, B., Fox, P., Long, A.

Middle: Teuer, E., Nikolai, T., Turzenski, D., Stassel, D., Feigley, B., Polka, C., Cacic, W., Moody, J., Cattanach, J., Luhm, J.

Bottom: Bea, B., Rebella, D., Marros, V., Byrne, R., Rataczak, D., West, J., Morgan, D., Elmer, L., Plainse, D.

Top: Sorenson, G., Lindquist, N., Hyer, J., Jacoboski, L., Schneiders, O., Schulz, D., Fairbert, G., Heiser, L., Russell, R.

Middle: Swanke, S., Sannes, N., Krell, L., Altenberg, A., Phelan, A., Fink, T., Fontaine, R., Severson, D., O'Neill, D., Schuelke, M., Lampert, M.

Bottom: Roseth, J., Marsh, B., O'Brien, P., Curtis, H., Ringstad, L., Bradway, K., Helgerson, D., Borchardt, L.

Top: Erickson, I., Marsh, R., Gilbert, B., O'Brien, P., Roseth, J., Davis, D., Matzke, E., Johnson, R., Cable, W., Butler, D.

Middle: Jacobson, S., Zeman, L., Gilbertson, C., Knope, M., Crosby, M., Schein, R., Tibbetts, B., Petersen, M., Hogleund, N., Benjamin, J., Bearwer, I.

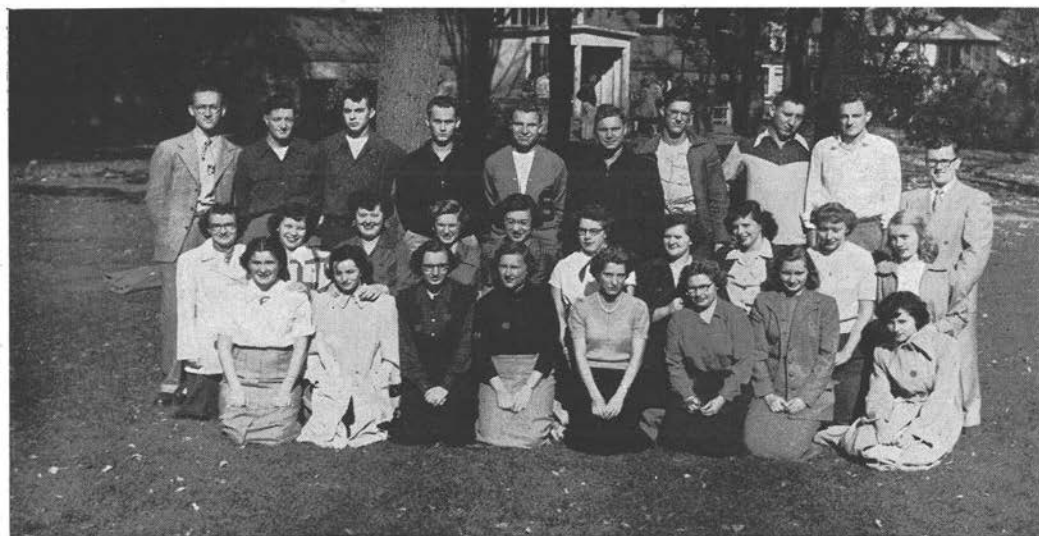
Bottom: Jensen, D., Craig, J., Collum, G., Jones, M., Sbertole, E., Robertson, J., Goebel, N., Fehrenbach, J.



Top: Weisbrot, B., Derge, P., Tauchen, A., Hoesft, A., Bauer, E., Bauman, B., Leahy, K., Abrahamson, S., Dobeck, J., Summers, J., Brown, D., Clark, G., Elsen, A., Schwartz, J.
 Middle: Popeck, J., Zastrow, M., Pope, B., Magee, C., Raaths, A., Connor, S., Schaefer, V., Teetzen, R., Curry, N., Reinecke, H., Jarnick, J., Kampenga, A.
 Bottom: Forell, R., Dristianson, S., Tracy, J., Anderson, R., Hodgdon, C., Krueger, R., Drechsler, H., Bruha, J., Jacobson, D., Fritsch, C.

SOPHOMORES

Top: Robinson, C., Wilson, L., Bogaczyk, S., Hoffman, F., DeGuire, F., Clayton, B., Wilkinson, J., Wiersma, W., Tillema, D., Way, W.
 Middle: Clintsman, N., Perry, J., Rasmussen, J., Isberner, H., Pautz, N., Hartleb, M., Rothman, D., Curtis, E., Gruen, J., Holding, P.
 Bottom: Allen, K., Pierre, W., Wysocki, J., Lemiesz, P., Schmeackle, W., Moll, J., Newhall, D., Thorpe, M.





Top: Ariens, P., Wilde, R., Anderson, G., Neuman, L., Purchatzke, B., English, B., Polzin, J., Laabs, Q., Jones, P., Negaard, J., Campbell, H.
 Middle: Kearns, R., Pinkerton, J., Fischer, J., Felton, J., Barrett, P., Searles, M., Fieting, R., Trapino, V., Malchow, Gossage, M., Sarbacker, J., Landt, S.
 Bottom: Thomas, P., Goodland, J., Mangold, D., Flint, R., Redmann, A., Marquard, G., Smith, S., Benson, D.

SOPHOMORES

Top: Jacobus, R., Bruha, R., Sommers, R., Morgan, D., Schulist, J., Papke, R., Kalkofen, R., Herman, L., LaMarche, G., Toser, R.
 Middle: Dahm, D., Nulty, H., Nelson, B., Lange, E., Muelle, B., Meister, A., Ziebarth, B., Witter, D., Stankevich, K., Gerber, F.
 Bottom: Albers, T., Krienke, G., Douglas, K., Lawton, J., Meyer, A., Irvine, J., Vissues, D.





FRESHMEN

Top: Baerenwald, G., Deicher, R., Freiberg, A., Webster, J., Ullsperger, R., Ackerman, T., Koehler, R., Gronski, B., Christoffersen, R.

Middle: Hage, B., Panke, M., Roy, D., Heise, J., Redmond, A., Miller, D., Benson, M., Lane, J., Farris, E., Cuff, J., Zuelke, A., Jauch, N.

Bottom: Goman, L., Tallmudge, R., Lovdahl, L., Leupold, A., Wanke, J., Corliss, C., Zarda, E., Hoag, M., Peabody, M.

Top: Bigalke, G., Rindfleisch, D., Novak, L., Hedquist, E., Fletcher, D., Bohler, W., Kish, D., Kohls, B., Wood, R., Boettcher, Jerry, Zurawski, L., McNamara, B., Clark, R.

Middle: Edmund, C., Moe, Carol, Schmidt, N., Figel, M., Ellingson, A., Sutton, S., Nottleson, B., Buhrdorf, J., Keach, J., Rose, K., Eulberg, J., Rulseh, M.

Bottom: Sazama, M., Lemke, L., Powell, J., Schulz, P., Baumer, M., Freeman, L., Jersey, J., Melzer, Y., Campbell, M., Piehl, J.

Top: Moll, J., Dachel, A., Miller, H., Greaton, W., Endle, W., Tanner, D., Plank, E., Paulson, Gene, Sharkey, J., Rohe, W., Jacobsen, E., Reinholdt, R.

Middle: Gage, C., Klinner, L., Pipe, C., Williams, J., Buggs, M., Vogel, G., Crook, B., Scheel, A., Weisen, P., Hanson, B., Sonnenberg, S.

Bottom: Fossatti, M., Bordeau, M., Quinn, L., Paulson, Bob, Miller, B., Turner, G.



FRESHMEN

Top: Anderson, R., Rucinski, P., Cooper, T., Wiener, R., Compton, C., Pagel, D., Swanson, C., Fresley, J., Hedquist, E., Bourcier, G., Reed, W., Shafranski, C.

Middle: Welniak, A., Extrom, D., Thompson, D., Scribner, S., Schultz, V., McIntee, R., Martens, J., Raczek, C., Herrington, N., Reznichuk, M., Haas, E.

Bottom: Towne, L., LaFave, R., Hurrish, D., Luedke, D., Schmidt, W., Langton, J., Wade, R., Corwin, S., Zukoski, H., Beutler, H.

Top: Paulsen, E., Wilde, D., Hanneman, R., Martin, D., Hoppe, M., Pettack, K., Graham, R., Laabs, B., Blaijs, D., Finch, W.

Middle: Zellinger, J., Schultz, Doris, Benson, S., Richmond, D., Moe, K., Broten, P., Callsen, C., Kuhnke, D., Schilling, M., Stashek, A., McGoff, B., Reineking, E.

Bottom: Trotter, K., Fait, M., Schumacher, D., Brylski, T., Junior, B., Chaffee, G., Kott, D., Noah, B.

Top: Wilder, H., Clemens, R., Buchholz, W., Todd, D., Krentz, F., Wenzel, E., Ebel, J., Zick, W., Anunson, G., Yndestad, W., Timler, V., Stamsta, D., Wolfe, W., Conway, W.

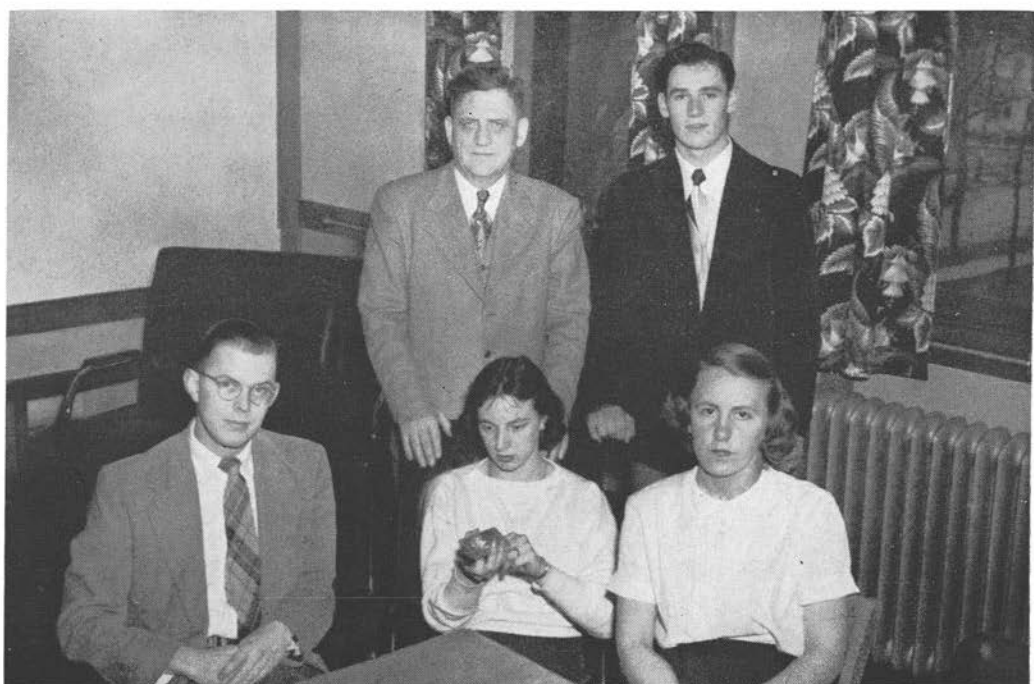
Middle: Ferdon, J., Hanson, J., Knoll, D., Aronson, C., Wagner, M., Roe, J., Mews, J., Mews, Joan, Kolinski, H., Marchel, J., Reuterskiold, B., Kubisiak, S., Flaherty, M., Olson, G., Johnson, D.

Bottom: Ross, D., Foster, J., Schadewald, F., Mulady, J., Briscoe, L., Platt, J., Damrau, J., McInnis, P., Cook, B., Check, B., Anderson, J., Behrendt, J.

STUDENT COUNCIL

The Student Council, under the capable presidency of Harry Johnson, had a very active year. The other officers were Don Schultz, vice-president; Mary Searles, secretary; and Louise Oelrich, treasurer. Representatives are chosen from the student body, four from each class and one from each of the divisions. Through the Student Council the students express their opinions and their problems. To start new activities and to promote school spirit, the council planned and held the first "Operation Week-End." A Steering Committee, composed of council members, was formed to make a schedule of week-ends for other clubs to sponsor. The plan was well received by the students and faculty. The Student Council was also informed about N. S. A., the National Student Association, and passed this information on to the student body. Mr. Kenneth Boylan is the group's adviser.

Members: Benson, M., Bestul, R., Cable, W., Clark, G., Cook, R., Crook, B., Dreschler, H., Douville, M., Fehrenbach, J., Herrington, N., Holm, N., Jacoboski, L., Johnson, H., Lovdahl, L., Oelrich, L., Robinson, C., Searles, M., Schoff, A., Schulz, D., Zick, W.



PROFESSIONAL ORGANIZATIONS

The Home Economics Club is an organization of all girls in the Home Economics division and is affiliated with the other state clubs. The first semester officers were Beverly Barnes, president; Gertrude Collum, vice-president; Hermelinda Bohl, secretary; and Dolores Newhall, treasurer. Second semester found Mary Jane Buss, Colleen Schroeder, Glenna Clark and Dolores Newhall in the offices respectively. The advisers are Miss Allen, Miss Meston, and Miss Wilson.

The Round Table is the professional organization for Intermediate and Upper Elementary students. Officers were Richard Turzenski, president; Harriet Marking, vice-president; Marvin Mayer, secretary-treasurer; and Louis Jacoboski, student council representative. Miss Colman is club adviser.

Primary Council is an organization of students in the kindergarten and primary division which tries to bring a closer relationship between the students and faculty and to promote better teaching abilities. Officers of the Council include Beverly Berg, president; Lila Elmer, vice-president; Joyce Moll, secretary; and Mary Lund, treasurer. The adviser is Miss Colman.

The Rural Life Club gives the rural students a look into the professional and social problems of a rural school. The second semester officers were Nancy Curry, president; Lillian Lovdahl, vice-president; Barbara Nottleson, secretary; and Donald Feit, treasurer. Miss Roach is the club's adviser while Mrs. Kerst and Mrs. Pieper add much to the life of the organization.

The Forum, which is the professional organization for secondary students, is under the direction of Mr. Rightsell and Dr. Tolo. Its meetings consist of problems which arise concerning graduation. The officers are president, Alvin Long; vice-president, Bill Cable; and secretary-treasurer, Don Olsen.

Alpha Kappa Lambda is the conservation club formed with leadership training as its main objective. Under the direction of Mr. Schmeackle, Dr. Wievel, and Mr. Sylvester, it also aims to give a broad background in conservation methods. Following the leadership of Don Helgerson, president; Charles Kellogg, vice-president; Richard Jansen, secretary; and Bob McMahan, treasurer, the club has carried on its traditional Woodchopper's Ball, Venison Steak Dinner, and Smelt Fry. This year the Fox River Valley Garden Clubs presented scholarships to Galen Parkinson and Bob Cook.

The Pointer and the Iris are the two student publications of CSTC. The Pointer is the college newspaper, whose editor is Joe Boettcher with Miss Glennon and Mr. Lewis acting as advisers. The Iris is the college annual. George Greathouse is the editor and Miss Wright and Dr. Tolo are the advisers.

The Women's Self-Governing Association does much in orienting the new students at CSTC. Mrs. Pfiffner and Miss Moser are the advisers. First semester officers were Roberta Henderson, president; Mary Douville, vice-president; Nancie Goebel, treasurer. Eleanor Curtis, Glenna Clark, Phyllis Jarnick and Kay Leahy were officers second semester.

Y.W.C.A.'s purpose is to better the relationship among girls from all the religious organizations. Miss Miriam Moser is the adviser; Louise Oelrich, president; Betty Mehne, vice-president; Beverly Tibbetts, secretary; Thora Fink, treasurer; and Margie Lawrie inter-faith representative.

The Radio Workshop is responsible for keeping CSTC on the air. Under the direction of Vern Varney it presents dramas and a round table discussion each week. Academic credits may be obtained through participation in the Workshop.

FORUM



ROUND TABLE



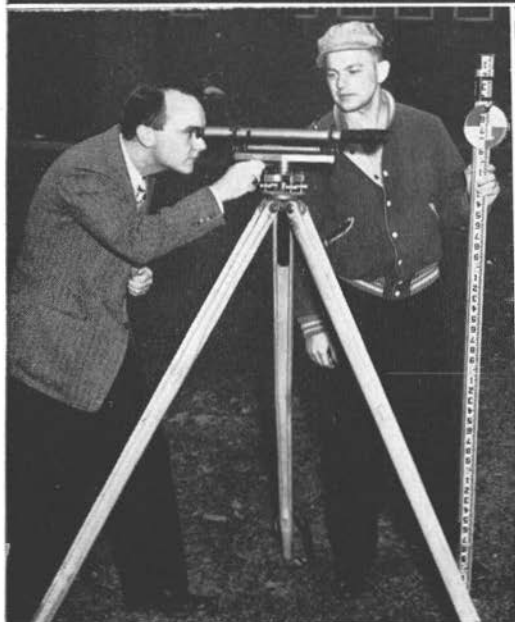
PRIMARY



RURAL LIFE



CONSERVATION AND RIFLE CLUB



HOME ECONOMICS CLUB



RADIO WORKSHOP



POINTER



IRIS



WSGA



YWCA



FRATERNITIES AND SORORITIES

Because they recognized a need for a third sorority and because they were interested in forming one, twenty-two industrious girls drafted a charter, accepted a constitution and became charter members of a sorority they named Psi Beta Psi. Officers elected the first semester were Betty Mehne, president; Beverly Ziebarth, vice-president; Marcella Schantz, secretary; and Delores Witter, treasurer. "Winter Holiday" was the theme of their tea held in January. The girls chose Mrs. Warren Blodgett and Mrs. Raymond Specht to be their advisers.

Tau Gamma Beta sorority undertook another busy year, begun by a "Back to School" tea in September. First semester girls who wore pink and blue ribbons, and became "Muds" were Lorna Krueger, Helen Nulty, Marlene Hartleb, and Eleanor Curtis. Guided by Mrs. Marjorie Kerst and Miss Gladys Van Arsdale, advisers, the Tau Gams worked with the Omegas and Psi Betas to present the intersorority dinner-dance, "Harbor Lights" in January. Phyllis Peterson, president; Barbara Lewis, vice-president; Ila Williamson, secretary; and Margaret Jones, treasurer, acted as first semester officers while Barbara Lewis, Jeanette Holm, Barbara Nelson, and Miss Jones accepted the duties for the second semester.

Omega Mu Chi sorority found many uses for their varied talents in activities such as their fall tea, annual knitting bazaar, and rushing parties. Pledges who became "Ihcumagemo" the first semester were Ruthie Schein, Ardis Raaths, and Sarah Connor. Leading the group first semester were Helen La Leike, president; Beverly Tibbetts, vice-president; Isla Mae Friberg, secretary; and Marge Finch, treasurer, with Virginia Gmeiner, Isla Mae Friberg, Beverly Tibbetts and Marge Finch accepting the duties the second semester. Mrs. Eugene Raddant acted as sorority adviser. Pledges the second semester became "Hemianiopsia Astobasia" and donned lavender and gold hair ribbons.

Very soon after school began this fall, a group of dashing young men donned green Robin Hood hats, and began to carry paddles wherever they went. Investigation showed these men — Charles Hodgdon, Frank Hoffman, Ken Stewart, Bill Clayton, Bill Flynn, Lavern Herman, Gordon Fairbert, and Bud Feigley — to be first semester pledges of Chi Delta Rho fraternity. Leading the fraternity that semester were Don Hendrick, president; Lloyd Peterson, vice president; Al Long, secretary; and Norvin Holm, treasurer. The second semester George Mosey, Ken Garska, Bud Feigley and Norvin Holm occupied these respective offices. Other activities that brought a year full of fun, fellowship and progress included a bowling league, a prize-winning Homecoming float and the second semester pledging.

Bob Bestul was the man who directed Phi Sigma Epsilon Fraternity during the first semester with the assistance of Ralph Roberts, vice president; Don Jaeschke, secretary; and Bob Petranek, treasurer. The Phi Sigs, a chapter of the National Education Fraternity, were busy this year entertaining alums at the fraternity house at Homecoming time, presenting their annual Style Show in April, and pledging members during both semesters. Ray Anderson, George Bacon, Jerry Bartosz, Walt Brunsman, Bob Dehlinger, Bill Endle, Bob Gruling, Dennis Schrank, and Ray Zwolinski proudly displayed bow ties the second semester. After looking over their personnel, the Phi Sigs elected Ralph Roberts, president; Lucien Roy, vice-president; Charles Bruce, secretary; and Frank Schmidler, treasurer for the second semester.

PAN HELL COUNCIL



PHI SIGMA EPSILON

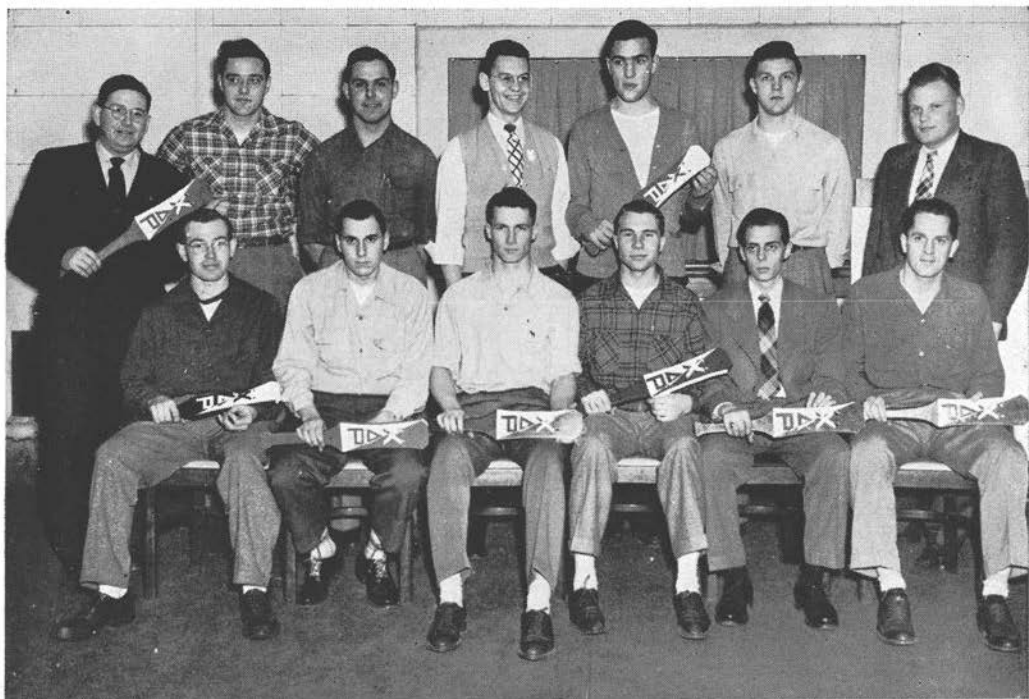




Members: Anderson, E., Anderson, R., Bacon, G., Bartosz, J., Bestul, R., Bogaczyk, S., Bowers, A., Bruce, C., Brunsmann, W., Cacic, W., Chick, G., Cook, R., Dehlinger, R., Endle, W., Goetz, J., Greathouse, G., Gruling, R., Helminski, A., Hirzy, F., Jacoboski, L., Karier, C., Korth, E., Kumbier, H., Lindquist, N., Mayer, M., McMahon, R., O'Brien, P., Okray, R., Petranek, R., Polzin, E., Popeck, J., Roberts, R., Roy, L., Schmidler, F., Schrank, D., Turzinski, R., Wesley, F., Whelihan, E., Wilkinson, J., Zissers, D., Zwolinski, R., Mr. Kremple — Adviser.

CHI DELTA RHO





Members: Bart, B., Boettcher, J., Cable, B., Case, D., Clayton, B., Cook, B., Deguire, F., Fairbert, G., Feigley, B., Flint, B., Flynn, B., Furstenburg, E., Garska, K., Gilbert, C., Hendrick, D., Herman, L., Hodgdon, C., Hoffman, F., Holm, V., Jacobsen, E., Jelinek, J., Joanis, W., Johnson, M., Johnson, R., Krueger, R., Kussman, R., LaLeike, F., Long, A., Lorenzen, R., Luhm, J., Mallow, J., Mead, M., Morgan, D., Mosey, G., Mulady, J., Olsen, D., Paulson, G., Paulson, R., Peterson, L., Pliska, E., Queram, N., Roberts, R., Sandberg, J., Schadewald, F., Scheel, J., Specht, D., Stewart, K., Veselak, K., Young, J.

OMEGA MU CHI





Members: Benson, M., Boehme, N., Brunner, L., Connor, S., Corliss, C., Crook, B., Crosby, M., Cuff, J., Ellingson, B., Fehrenbach, J., Ferdon, J., Figel, P., Finch, M., Fischer, V., Friberg, I., Gilbertson, B., Gmeiner, V., Goebel, N., Hall, J., Hanson, B., Held, M., Hoag, M., Hoglund, N., Holstein, G., Hummel, E., Jacobson, S., Jersey, J., Knope, M., Nottleson, B., Phelan, A., Piehl, J., Pinkerton, J., Raaths, A., Robertson, J., Sannes, N., Sarbacker, J., Schadewald, M., Scheel, A., Schwebke, J., Scribner, S., Shein, R., Sutton, S., Swanke, S., Thompson, D., Tibbetts, B., Wanke, J., Zarda, E.

TAU GAMMA BETA



Members: Abrahamson, S., Babcock, B., Barnes, B., Bauman, B., Bea, B., Brenner, J., Burne, R., Curtis, E., Dahnert, E., Dehlinger, B., Douville, M., Elmer, L., Farris, E., Gertschen, P., Gilkay, I., Gruen, J., Hartleb, M., Holm, E., Holm, J., Jarneck, P., Jones, M., Karner, K., Krueger, L., Kruse, C., Lane, J., Leahy, K., Lewis, B., Lund, M., Marros, V., Mayer, N., Moll, J., Myers, M., Nelson, B., Newhall, D., Nulty, H., Peterson, P., Rebella, D., Schmeekle, W., Thompson, D., Williamson, I.



PSI BETA PSI



Members: Allen, K., Baumer, M., Boote, R., Edmund, C., Hanson, V., Harrison, P., Higgins, B., Hofman, V., Kranski, G., Kuhnke, D., Lawrie, M., Marth, D., Mehne, B., Meister, A., Mueller, B., Neerhof, M., Omernick, D., Panke, M., Pautz, N., Peplinski, B., Perry, J., Reinecke, H., Reineking, E., Roy, D., Ruffing, E., Sbertole, E., Schilling, M., Schantz, M., Schultz, D., Schwartz, J., Spencer, F., Witter, D., Zanella, F., Zastrow, M., Ziebarth, B.



HONORARY ORGANIZATIONS

"We seek to become humble artists by the one and only road of labor and service." This is the motto of the dramatic fraternity, Alpha Psi Omega. Following the leadership of Donna Alderton, president; Virginia Gmeiner, vice-president; Barbara Bea, secretary; and Bernice Dehlinger, treasurer, the members have taken charge of all the college's 1950 - 1951 theatrical productions. They sponsored the high school debate and forensic tournaments of this area and the district and regional high school one-act play contest. Anyone may gain membership to the fraternity by active participation in two major roles or the equivalent in technical roles. Mr. Burroughs is the adviser and Mr. Hicks is the special technical adviser.

Alpha Kappa Rho is the honorary music fraternity of CSTC. Its purpose is to recognize musical ability, to stimulate an interest in music, and to develop leadership among music students. Every year Alpha Kappa Rho presents an award to a senior woman who excels in popularity, leadership, scholarship, and good sportsmanship. It also sponsors a radio program, "Music for You," every Friday. The present officers are Frank Wesley, president; Janice Gruen, vice-president; Barbara Nelson, secretary; and Nancie Goebel, treasurer. Mr. Michelsen is adviser.

Sigma Zeta is a national honorary science society which recognizes outstanding students in the field of science and encourages work in science. Membership is open to those who have attained a two point average. Each year Sigma Zeta sponsors the Junior Academy of Science and presents an award to one of its outstanding members. The present officers are Ed Furstenberg, president; Dr. Trytten, secretary-treasurer; Ray Venn, vice-president; and Mary Schadewald, historian. The faculty advisers are Miss Allen, Mr. Trytten, Mr. Epple, Mr. Faust and Dr. Lyness.

The Social Studies Club which was formed in 1948 has been converted into a new honorary fraternity, Alpha Gamma. Previously the club was open to any interested students, but now definite membership qualifications have been set up. The purpose of the organization is to promote better understanding of the social sciences. This year the club conducted several polls regarding current events. It also brought speakers to the college. The faculty advisers are Mr. Kremple, representing the social studies; Mr. Crow, representing history; and Mr. Specht, representing geography. The present officers are Clarence Karier, president; Alvin Long, vice-president; Richard Polzin, secretary; and Irving Mozuch, treasurer.

Sincerity, truth, and design is the motto of the Phi Beta chapter of Sigma Tau Delta. Members must be English majors or minors with a "B" average and outstanding ability in creative writing. This year the fraternity has heard several excellent speakers. In the spring they will again present "Words Worth," the annual prose and poetry publication. Serious and humorous contributions for the magazine come from the members and the student body. The present officers are Joe Boettcher, president; Suzanne Swanke, vice-president and secretary; Virginia Gmeiner, treasurer; and Roberta Henderson, historian. Mr. Burroughs is faculty director.

ALPHA PSI OMEGA



ALPHA KAPPA RHO



SIGMA TAU DELTA



SIGMA ZETA



ALPHA KAPPA LAMBDA



SOCIAL STUDIES





RELIGIOUS GROUPS

To promote Catholic action and fellowship and to sponsor spiritual, intellectual, and social interest is the purpose and the ideal held by the Newman Club. Included among the spiritual activities of the year were a group Mass and Communion once a month and a rosary for peace every evening. Father Stanley Chilicki of Saint Stanislaus parish is the club's chaplain, and the adviser is Miss Roach. The present officers are Henry Drechsler, president; Norris Lindquist, vice-president; Kathryn Allen, treasurer; and Barbara Bauman, secretary.

During the year the Baptist students on our campus were busy sending gift boxes of clothing to Europe and leading group singing at the Old Folk's Home. Mr. Crow serves as adviser for Wayland. The present officers are Dean Baltz, president; Nancy Malchow, secretary; and Ken Nyberg, inter-faith representative.

Highlights of the year for Gamma Delta, Beta chapter of the Lutheran Synodical Conference, were a novel pledging and initiation program for new members, a state convention at Madison, and well organized business meetings that were followed by religious discussions of interest to the group. This spring several members attended the regional convention at Houghton, Michigan. Guiding the group throughout the year were Mrs. Marjorie Kerst, faculty adviser, and Vicar Bragdon Smith, spiritual adviser. In January Warren Hamele was elected president; Ardis Raaths, vice-president; Joyce Moll, secretary; and Rawley Young, treasurer.

With the coming of the school year, a new religious organization was formed on the campus. The Presbyterian students gathered under the name of Trigon and elected Al Curtis, president; Barbara Bea, vice-president; Bill Clayton, treasurer; and Shirley Landt, secretary. Reverend Davies is the group adviser. Later in the year students of the Evangelical and Reformed Church joined with Trigon and helped to promote good fellowship among different religious denominations. Meetings are both devotional and social. During the year the group sponsored a toboggan party and a sleigh ride.

Wesley Foundation is an organization of Methodist students, which promotes friendship and fellowship. Gordon Sorenson was the president of the group for the year; Verna Schaefer, vice-president; Mary Jo Reznichuk, secretary; and Ted Dowd, treasurer. The advisers were Mr. and Mrs. Epple and Dr. and Mrs. Lyness. The members have been busy all year participating in a variety of activities. In the fall they acted as hosts to Methodist students from other colleges in Wisconsin. The club also formed deputation teams which went to churches in neighboring towns. A Soda Pop Hour was held in the student lounge during February.

Canterbury is the Episcopalian organization on our campus. It is not a social group, but aims to discuss the principles of the church and to find out about Christianity.

The Lutheran Students' Association has participated in various activities during the year. Deputation teams have visited congregations to acquaint them with L.S.A. which is also a member of the National Lutheran Council. Delegates were sent to the Regional Conferences at the University of Minnesota and River Falls. The meetings are both devotional and social. Dr. Trytten is the faculty adviser; Reverend Orvis Hansen, pastor of Trinity Lutheran Church is the spiritual adviser. The present officers are Bob Kristianson; president; Bill Cook, vice-president; Sylvia Abrahamson, secretary; and Jeanette Holm, treasurer.

WESLEY



GAMMA DELTA



LSA



INTERFAITH COUNCIL



WAYLAND



TRIGON



NEWMAN CLUB



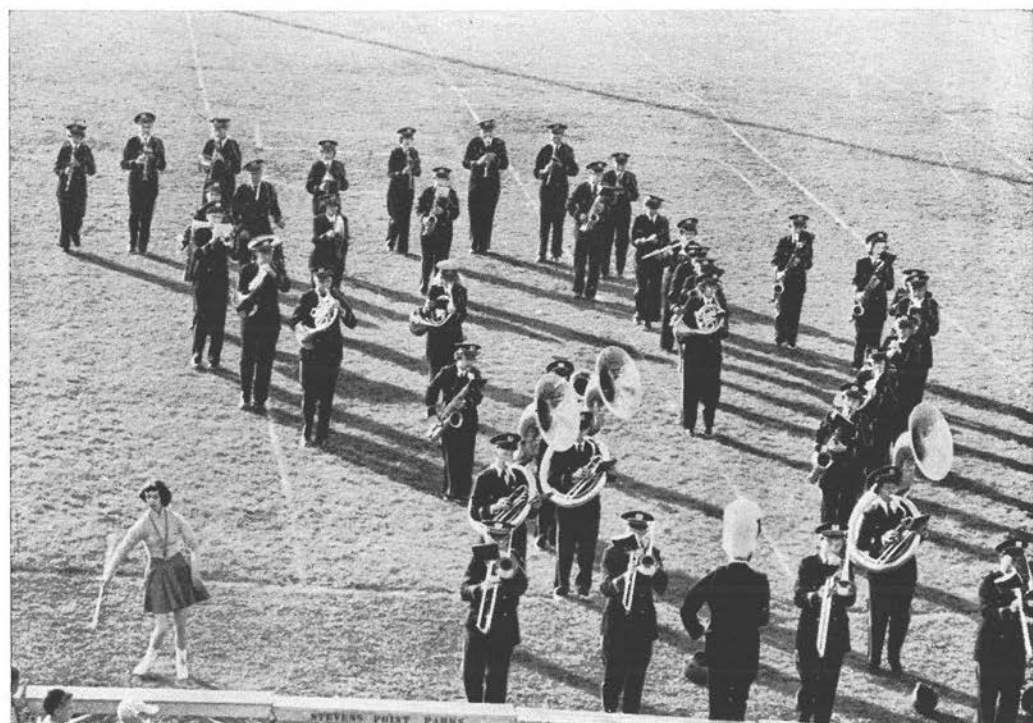
OUR MUSICIANS

In emphasizing our school throughout the state, one of the activities always stressed is our excellent music department. The prestige gained for the college by the music department can be attributed to the many talented students taking part in the different musical organizations on the campus, and to their capable directors.

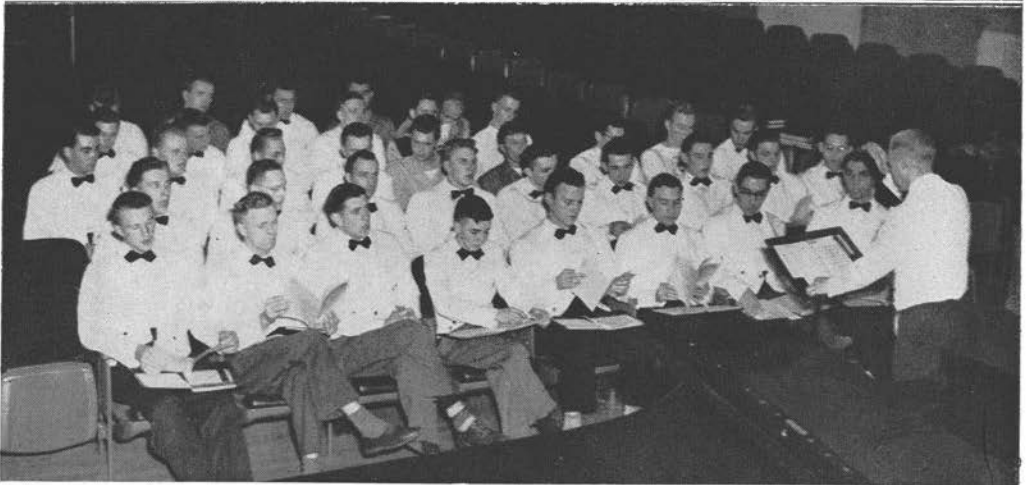
Instrumentally, Central State has a band and a symphony orchestra. These groups, under the baton of Peter J. Michelsen, did a tremendous job this year. For every athletic contest, the band, with their martial music, instilled spirit in the participants and spectators. The crowning point of the instrumental group's activities was the Band Homecoming Concert. Comment on their musical ability and their showmanship could be heard for weeks after the concert.

In the vocal department, Mr. Michelsen also directs the Mixed Chorus and the Girls' Glee Club. Although time and hard work are required to make these groups a success, their ranks are always filled. The highlight of their year was the Christmas Concert, when the student body enjoyed the fulfillment of those many practice hours.

Last, but certainly not least, we have the Men's Glee Club. These "Ambassadors of Good Will", as they are fondly referred to, are directed by Norman E. Knutzen. This year the club celebrated its fifteenth birthday by presenting to the public a student alumni concert. In addition to this, an important part of their work consists of concerts sung in high schools throughout the state. These men do a great deal to attract students to our school.



MEN'S GLEE CLUB



GIRLS' GLEE CLUB



MIXED CHORUS



SPORTS

Dame Fortune cast a dour eye upon CSTC football fortunes this past season. A none too impressive overall record of 3 wins, 4 losses, and 1 tie was entered in the Pointer ledger for the eyes of future generations. This record, however, does not tell the full story. There were times when it appeared as if the fighting Purple and Gold tradition was not being upheld, but a closer look will reveal an astonishing fact. The truth of the situation is that Coach Quandt fielded a different starting "11" every time the team took the field. At one time or another the whole regular squad was hampered by a constant string of bumps and bruises. Nevertheless, no matter who started the game or sat on the bench, the desire and the fight inherent in all CSTC'ers never left the squad even with the final gun.

The hard court record was not the most enjoyable that CSTC ever enjoyed, but again, black and white records necessarily lack the details of the fighting, hard-driving, Pointer quintet. The actual record was 7 wins and 13 losses. These absolutes do not include, however, the narrow margins by which St. Norbert's, one of the basketball powers of the state, slipped by the Purple and Gold; nor do they include the slim point space separating the visitors from the Pointers in the eye for eye, tooth for tooth, conference battles.

The unpredictability of spring-time weather caused many an ill-temper among residents of this northern clime, but none had more justification for it than Coach Frank Crow and his track squad. Night after night the track team was forced to work out in the Training school gym in anticipation of the conference meet and the several dual and triangular contests. The squad this year numbered 50 men, many of whom were valuable additions from the freshman class. Together with the veteran wing-footed athletes, they proved a powerful and potent squad among all competitors.

Under the able tutelage of James Hicks, aspiring Bobby Joneses shot their birdies and eagles for the Purple and Gold. The squad, composed mainly of veterans from last year's link season, did a creditable job for the college. Although the golf team received little publicity for their efforts the men did much to enhance the prestige of Central State.

Rounding out the spring sports program is the tennis squad. These boys, coached by Bernard Wivel, played a full set of matches despite the fact that the home court was torn up during the erection of the men's dorm. The mainstay of the team were returning lettermen, who were ably assisted by the new men who reported for the squad.

Intramural sports also play an important part in college life. A full schedule of touch football, basketball, and volley ball was run off through the school year. This athletic program is under the directorship of Edgar Pieper. A high percentage of men turned out to participate, making the program effective and a success.

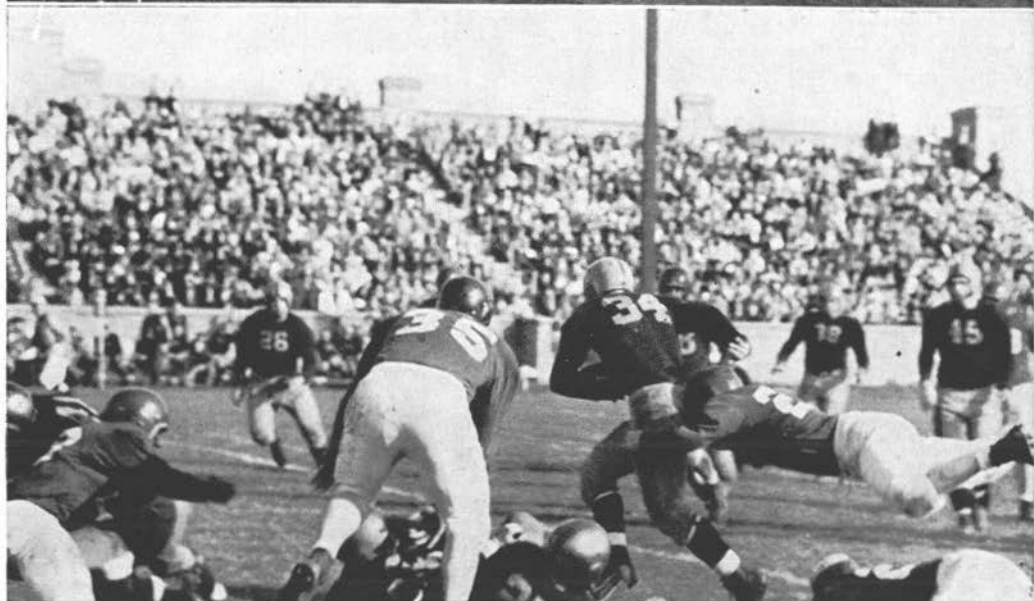
From early fall to late spring, the college keglers met at the Recreation Alleys to vie for the championship of the college bowling league. The different teams were sponsored by local businessmen and some campus organizations. Constant leaders during the season were Knudtson's Market, Coney Island, and the Belke Lumber Company. High series for the year was a 949 series by the Belke 5.

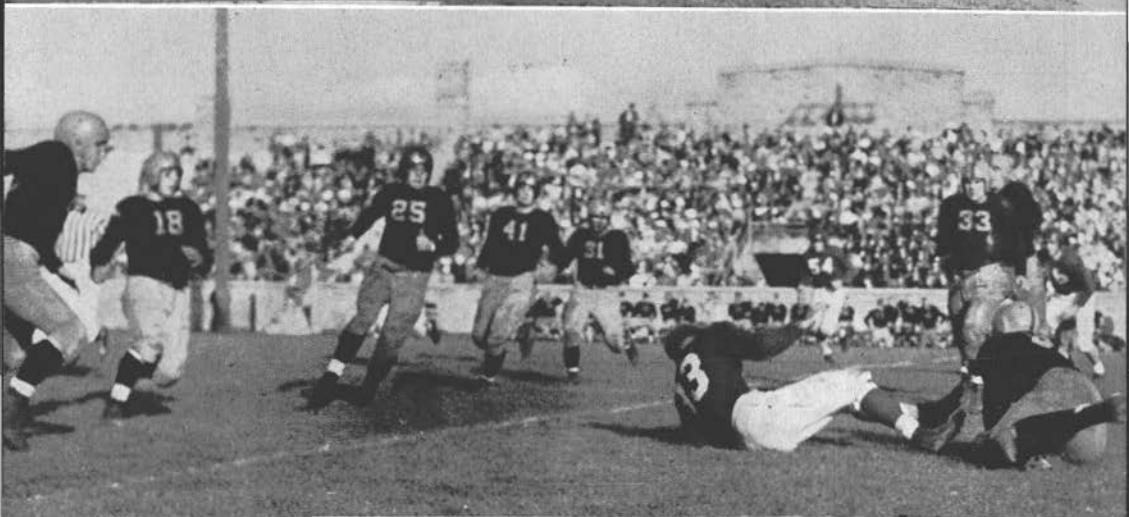
"Sports for All" is the objective of the Women's Recreation Association, an organization of college women interested in recreation activities. The various activities in which the members participate include tennis, archery, volley ball, basketball, table tennis, badminton, hiking, and winter sports. The traditional "Christmas Cheer" in the student lounge is one of the most pleasant functions sponsored by the W.R.A.

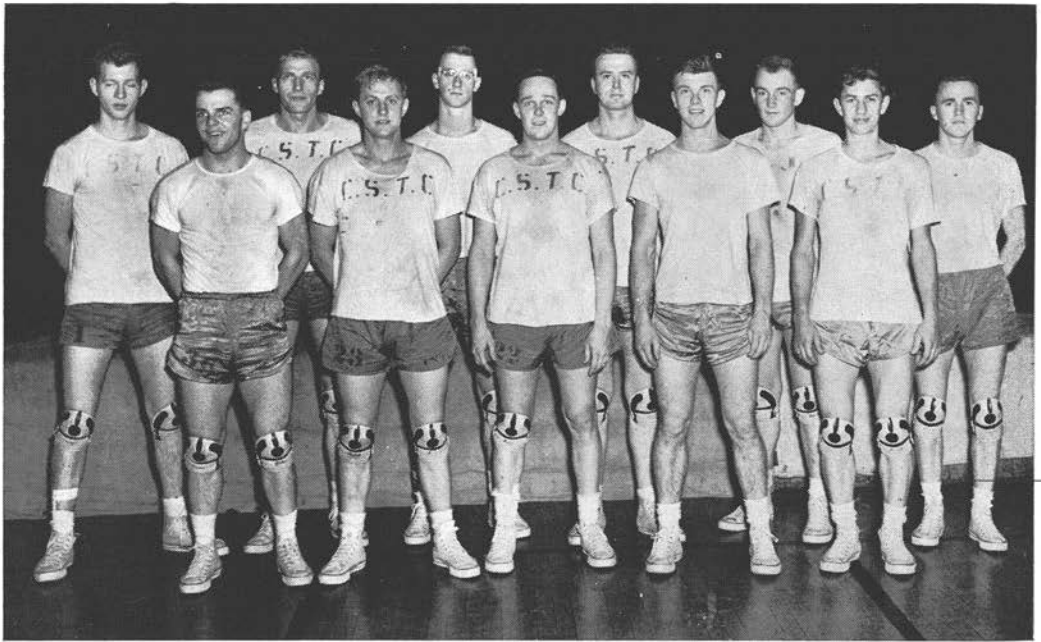


FOOTBALL

C.S.C.	0	Michigan Tech	0
C.S.C.	2	Merrill	0
C.S.C.	13	La Crosse	29
C.S.C.	12	Whitewater	26
C.S.C.	21	Park Falls	7
C.S.C.	0	Milwaukee	38
C.S.C.	7	Oshkosh	6
C.S.C.	0	Platteville	11

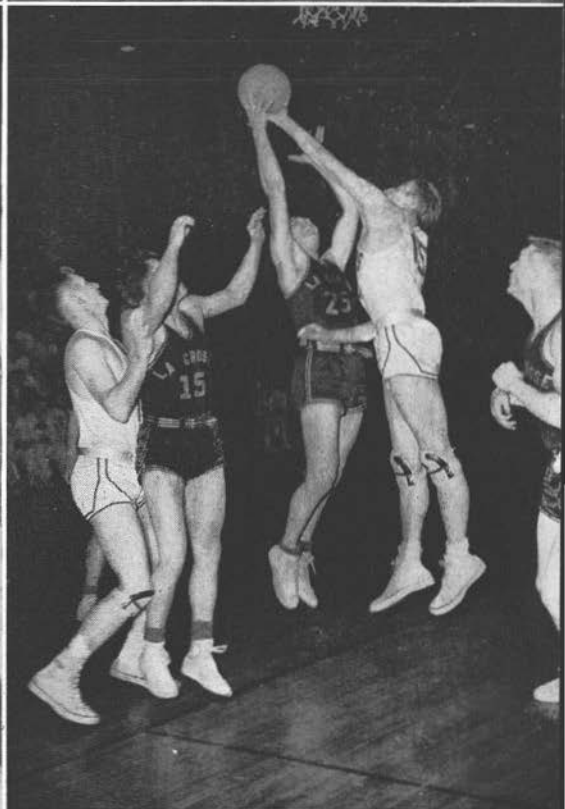
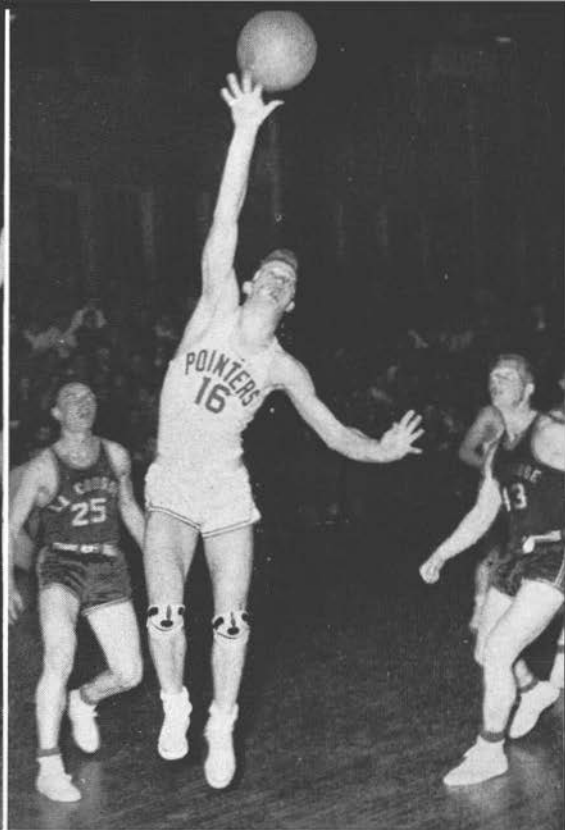
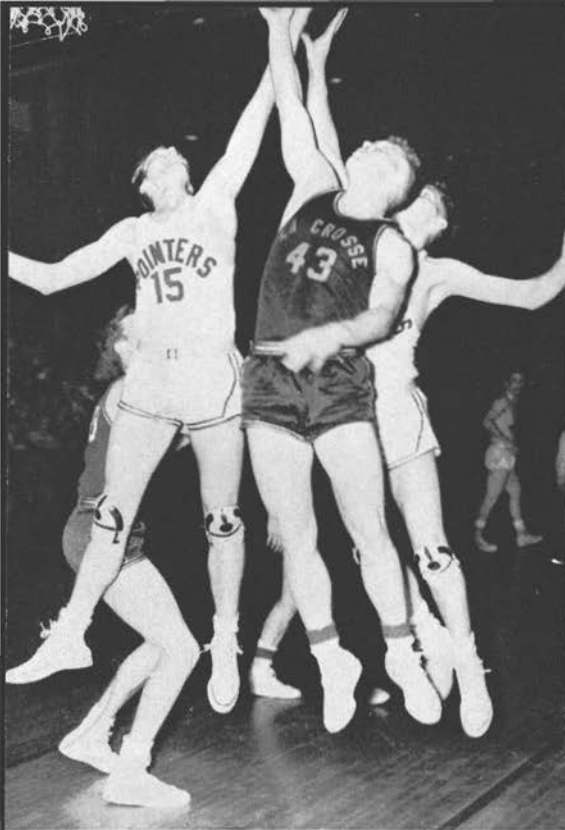




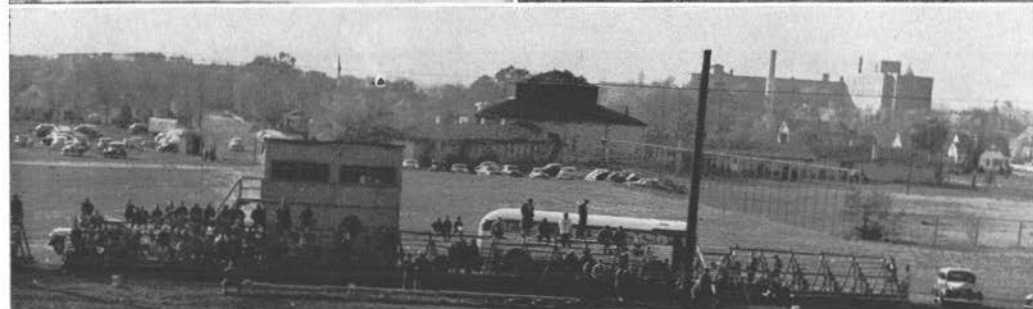


BASKETBALL

C.S.C.	56	Northland	63
C.S.C.	65	Michigan Tech	75
C.S.C.	64	Milton	55
C.S.C.	64	St. Norberts	79
C.S.C.	66	Milwaukee	68
C.S.C.	73	Eau Claire	79
C.S.C.	58	Winona	66
C.S.C.	78	Milton	46
C.S.C.	48	Whitewater	64
C.S.C.	69	Stout	64
C.S.C.	50	La Crosse	68
C.S.C.	53	Oshkosh	66
C.S.C.	66	Platteville	56
C.S.C.	42	Winona	56
C.S.C.	60	Milwaukee	52
C.S.C.	68	St. Norberts	72
C.S.C.	86	River Falls	76
C.S.C.	67	Eau Claire	82
C.S.C.	51	Oshkosh	47
C.S.C.	61	Platteville	72
C.S.C.	58	Whitewater	76



TRACK



INTRAMURALS



CHEERLEADERS



WRA



HOMECOMING





SENIOR BALL



JUNIOR PROM



THEATRICAL PRODUCTIONS

The opportunity of participation in theatrical productions is open to all college students. The plays given this year have produced outstanding performance on the stage and the best of technical work back stage. With the help of assisting faculty advisers, Mr. Leland Burroughs, Miss Pauline Isaacson, Mr. Robert Lewis, and Mr. James Hicks, three one-acts were presented during the first semester under the auspices of members of Alpha Psi Omega. The plays were "Suppressed Desires," directed by Donna Alderton, "The Valiant" directed by Ralph Roberts, and "Curse You, Jack Dalton" directed by Jean Robertson. The students of Central State during the second semester starred in the French-acting edition of Shakespeare's "Twelfth Night" arranged in Great Britain and directed by Mr. Burroughs. The first evening of a production is always guest night, and high schools belonging to this forensic district are invited to attend. The purpose of dramatics is to promote excellence in speech work, and to provide the opportunity of participation in an outstanding and worthwhile extra-curricular activity.

Suppressed Desires

Director: Donna Alderton

Cast: Virginia Gmeiner, Harold Miller, Sally Scribner.

The Valiant

Director: Ralph Roberts

Cast: Ralph Storm, Dick Francis, Dorthianne Rebella, Jack Popeck, Bart McNamara, Gordon Bigalke.

Curse You, Jack Dalton

Director: Jean Robertson

Cast: Jerry Boettcher, Sally Connor, Don Schulz, Willis Zick, Lillian Lovdahl, Eleanor Curtis, Joanne Wysocki.



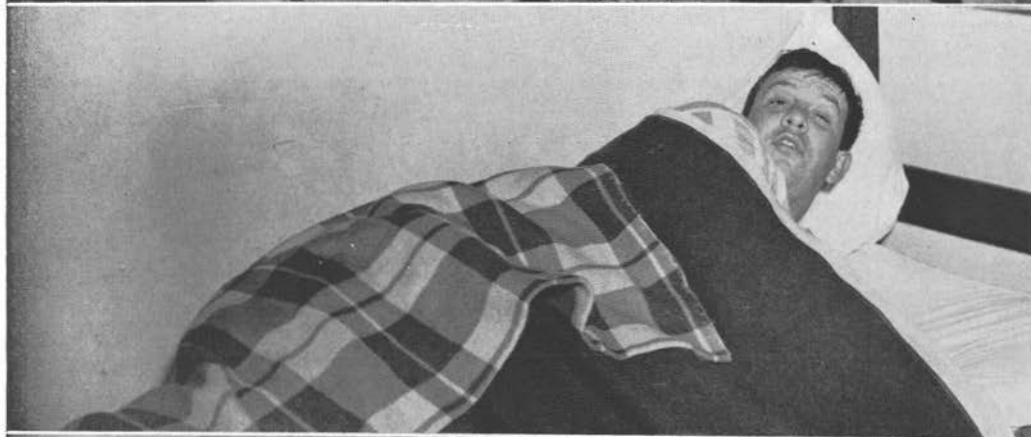
NELSON HALL



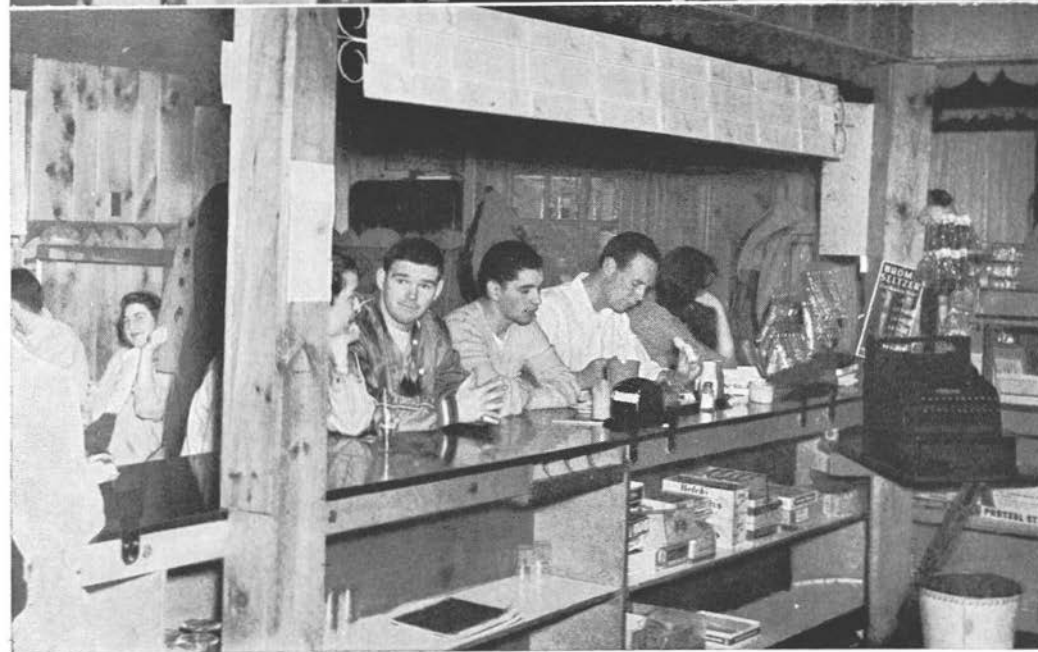
DORMITES



ROOMING HOUSES



MERV'S AND CO-OP



TRAINING



SCHOOL





Our Photographer

Dick Francis

**We
hope this
book brings
back fond
memories.**

The Staff

THE '51 STAFF

Editor	Jim Greathouse
Associate Editor	Suzanne Swanke
Business Manager	Alvin Long
Advertising Manager	Ruth Schein Jean Robertson Dave Ross
Copy Staff	Norma Mayer Eunice Bauer Anita Hoeft Joann Cuff Margie Benson Ethel Farris Betty Crook Jack Popeck
Layout Staff	Nathalie Hoglund Ruth Lang Lila Elmer Kathryn Stankevich Marilyn Gossage Audrey Scheel
Identification Staff	Mary Douville Ethel Farris Ilse Hirzy
Typists	Ramona Byrne Eileen Dahnert
Photographers	Dick Francis George Stevens Warren Hamele Bart McNamara John Behrendt
Editorial Adviser	Miss Harriett Wright
Business Adviser	Dr. Harold Tolo
Photographic Adviser	Mr. Gilbert Faust
Art Adviser	Miss Edna Carlson

ADVERTISEMENTS —

To the business men of this community, we wish to express our sincere appreciation for the splendid way they have subscribed to this book, and also for their attitude of courtesy and consideration which they have extended to us and our fellow college students.

Sincerely,

Ruth Schein

Jean Robertson

	Page		Page
Altenburg's Dairy	126	Krembs Hardware Company	133
Arenberg's Jewelry Company	143	LeRoy's Dress Shop	143
Automobile Dealers Association	135	C. M. Lipman Furniture Company	126
Badger Paint Store	132	Lullabye Furniture Corporation	138
Bake-Rite Baking Company	139	Modern Toggery	137
Bartosz & Clark	141	Moland Brothers	127
Belke Lumber Company	130	Montgomery Ward	129
Big Shoe Store	123	National Bookbinding Company	142
Boston Furniture Company	141	Nigbor Fur Coat Company	136
Breitenstein Company	141	Normington Dry Cleaning Company	135
Brock Engraving Company (Madison) ..	140	Otterlee Jewelry Company	121
Campbells	134	Parkinson's Clothes Shop	130
Campus Cafe	121	Peickert's Meat Market	122
Central Wisconsin Recreation Alley's ..	122	Penney's	125
Citizens National Bank	132	Phillip's Studio	124
Coca-Cola Bottling Company	132	Point Beverage Company.....	137
College Counter	122	Point Cafe	133
Continental Clothing Company	127	Polly Frocks	125
Copps Company	123	Quality Sotre	131
Delzell Oil Company	138	Shippy Shoe Store	139
Emmons	126	Slicker's Texaco Station	143
Helen Fierek's Hat Shop	143	Smart Shop	143
First National Bank	136	Sorenson's Floral	137
Fisher's Dairy	122	South Side Sport Shop	130
Fox & Lyric Theatres	124	Sport Shop	136
Frank's Hardware	143	Sportsman's Store	133
Gamble Store	127	Spot Restaurant	143
Goodman's	139	Stevens Point Dairy	124
Graham-Lane Music Shop	143	Taylor's Drugs	134
Green's Style Shop	143	Tucker Studio	143
Hannon's Drug Store	137	Vetter Manufacturing Company	140
Hardware Mutual Casualty Company ..	128	Walter's Flower Shop	131
Home Furnishing Company	123	Welsby's Dry Cleaning Company	130
Joerns Bros. Furniture Company	139	Westenberger's Drug Store	129
Joe's Yellowstone Hotel & Motor Court ..	125	West's Dairy (Plover)	141
Journal Printing Company	129	Whiting-Plover Paper Company	131
Karp's Bootery	125	Wilshire Shop	133
Kemp's Sunrise	127	Wisconsin Public Service Corporation ..	138
Kostka Fur Coat Company	132	Worzalla Publishing Company	142

The Co-op is an organization which is operated by the students of the college. The Student Co-op is a non-profit organization, its purpose being to give students wholesome meals at lower prices. The Co-op was organized in 1946 with 110 members and has now increased to its capacity number of 150 members. The business is transacted at an open meeting or through an elected board of directors. Each member upon joining, pays an entry fee which is refunded at the end of the year. Students have an opportunity to earn part of their expenses by working in the organization.

OFFICERS:

Bill Bart — Pres.

Jerry Jelinek

Bill Flynn

CAMPUS CAFE

"Where an atmosphere of friendliness prevails"

The Campus Cafe, the home of the Student Co-op,
offers short orders and fountain service to
all students.



1709



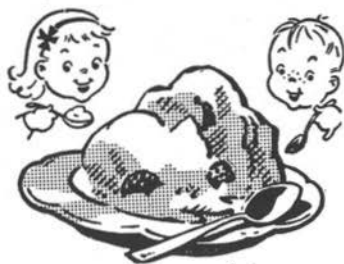
OTTERLEE'S



Best Wishes
to
those
who
are
graduating

THE COLLEGE COUNTER

Children . . .



and grown-ups, enjoy smooth FISHER'S
ice-cream as well as their other fine
dairy products.

FISHER'S DAIRY

122 N. 2nd St.

Phone 1902

CENTRAL RECREATION ALLEY'S



Bowling Alley's

VIC STANKE
Manager

Cocktail Bar

LAMBERT KLUCK
Manager



For the finest tasting
meats, poultry, sea food and
sausages shop at

PEICKERT'S MEAT MARKET

Phone 68

**CONGRATULATIONS
CLASS OF 1951**



BIG SHOE STORE

Your headquarters for
famous nationally advertised
footwear: Sport Pals, Friskies,
Lolos, Dreensteps.

419 Main St.

Stevens Point

*"Central Wisconsin's Largest
underselling shoe store"*



STOP!

If you need Carpeting,
Linoleum, Window Shades,
Venetian Blinds. Come in and
see the outstanding quality and
Workmanship that we can offer you.

**THE HOME
FURNISHINGS INC.**

121 North Second Street

**F
O
X**

**L
Y
R
I
C**

Your friendly Fox
theatres extend their
congratulations to the
graduating class
of 1951

**STEVENS POINT
DAIRY**

Cloverland

Ice Cream
and
Butter



PHILLIP'S STUDIO





JOE'S
ALL MODERN
YELLOWSTONE

Hotel & Tourist Court

Exceptionally
Fine Food

1 Mile East of the College on Highway 10



MAD

AT HIGH PRICES?

You'll save money at

PENNEY'S
... STORES ...



Dress
Blouse
Sweater
Skirt

from

POLLY FROCKS

Women's Apparel

KARP'S BOOTERY

"The store of personalized
shoe fitting"

The complete family
shoe store . . .

KARP'S BOOTERY

"On Stevens Point's famous Market Square"

EMMONS

Stationery and Office Supply Co.



Distributors of the

L. C. Smith — Corona Portable Typewriter

"The World's Fastest Portable Typewriter"

C. M. LIPMAN FURNITURE CO.

"Our Merchandise
must be good or we
make it good."

Stevens Point, Wis.



ALL BERGS say that

ALTENBURG'S DAIRY

products are the best.

"We Freeze to Please"

**MOLAND BROS.
TRUCKING COMPANY**

"Keep Your Freight Rollin'

Ship via Moland"

Phone 252

**THE
GAMBLE
STORE**

408 Main St.

Phone 1548



KEMPS SUNRISE

Known for excellent
Chinese and American food.

3 Miles North of Stevens Point, Wis.
Highway 51



Even the wise old owl knows
That the CONTINENTAL is the place for
Clothes.

GLOVES, SCARFS and HOSIERY too;
The dollars you pay are just a few.

**THE CONTINENTAL
CLOTHING COMPANY**

"Across from the Fox Theatre"



ARE YOU A PROPHET?

YOU MAY NOT BE A PROPHET but you should look to the future with confidence and encouragement. The record you have earned in college should provide a sound foundation for the future.

Congratulations on your scholastic achievements. Graduation marks the beginning of another phase in your career. Your future progress is dependent upon such characteristics as integrity, persistence and human understanding. May your efforts and ambitions be realized in a happy, worthwhile life.

Insurance for your AUTOMOBILE . . . HOME . . . BUSINESS

Hardware Mutuals

HARDWARE MUTUAL CASUALTY COMPANY
HARDWARE DEALERS MUTUAL FIRE INSURANCE COMPANY
Stevens Point, Wisconsin • Offices Coast to Coast

AS NATIONALLY ADVERTISED

CALL
2000 for
Stevens Point

DAILY JOURNAL

Want Ads

Easy as 1, 2, 3 to USE

Stevens Point Daily Journal
Member of the Associated Press
114 North Third Street

Your Printing Problems will be solved by

THE JOURNAL PRINTING DEPARTMENT

116 North Third Street
Next door to the newspaper office

LOOK YOUR
BEST



Shop For Your
Complete Wardrobe
At

MONTGOMERY WARD



"Professional Prescription Service"

THE
REXALL DRUG STORE
IN
STEVENS POINT

WESTENBERGER'S

"Across from the Postoffice"

Phone 27

BELKE

Lumber & Mfg. Co.

Cabinet work

Millwork

Insulation

Paint

Roofing

Lumber

Glass

247 N. 2nd St.

Phone 1304

Stevens Point

SOUTH SIDE SPORT SHOP

The best sportsmen do confide,
that they shop at the sport shop
on the south side.



813 Strongs Ave.

Phone 2156



He: "My, you look lovely tonight."

She: "Why thanks, WELSBY'S did my
dry cleaning just right."

WELSBY'S

446 Clark St.

Phone 688

THANK YOU

for the business you have
given us!

And cordial greetings
from the people at

PARKINSON'S

Clothes for Men

WHITING-PLOVER PAPER CO.

Stevens Point, Wis.

Manufacturers of

Permanized Papers

and

Keelbord Papers

"Say it with Flowers"

**J. A. WALTER
FLORIST**



Plants and cut flower arrangements
with distinction

110 N. Michigan Ave.

Phone 1629

The Quality Store



Right this way for exclusive
WOMEN'S, MISSES and JUNIORS
wearing apparel.

**CITIZENS NATIONAL
BANK**

425 Main St.

Phone 77

**BADGER PAINT &
HARDWARE
STORES, INC.**



STEVENS POINT, WIS.

317 Main St.

Phone 790



*Ask for it either way
... both trade-marks
mean the same thing.*



COMPLIMENTS of

KOSTKA FURS

Stevens Point — Wis. Rapids

Shoes

Accessories



WILSHIRE SHOP

440 Main St.

Stevens Point

Kelvinators

Radios

Everything in hardware

Maytag washers

Bicycles

Sensible prices

HARDWARE

"On the Famous Market Square"

"Private Party?"

Make a reservation in our beautiful

COLONIAL ROOM."



Main Street

POINT CAFE

Strongs Ave.

Just ask the people who know —

"The **SPORTSMAN STORE**

is the place to go."



THE SPORTSMAN STORE

443 Main St.

Stevens Point

"Next to the Fox theater"



CAMPBELL'S

A. L. SHAFTON & CO.

Wholesalers

Fruit, Produce & Groceries

Stevens Point, Wis.

Clayt Crowns and Crew
are dedicated to the idea
of delivering the MOST auto
service for the least
money. Enough said



North of the Square
STEVENS POINT

West of the Depots
WISCONSIN RAPIDS

CROWNS OF TWO TOWNS

Crowns Auto Sales
DeSoto :—: Plymouth

*Congratulations
graduating
Seniors*

•

TAYLOR'S Drug Stores

111 Strong's Ave. 752 Church St.
PHONE 3 PHONE 49

The Stevens Point Automobile Dealers Association

BOOTH AUTO SALES INC.

440 Clark St.

HEIN IMPLEMENT CO.

1633 S. Church St.

BREZINSKI MOTORS INC.

115 Church St.

KARNER AUTO SALES

119 Ellis St.

CARTWRIGHT AUTO SALES

311 Normal Ave.

MANDRY AUTO SALES

Route #2

CROWN'S AUTO SALES

242 No. 2nd St.

NORTH MOTOR SALES

234 No. 2nd St.

**ERICKSON
MOTOR SALES INC.**

309 Strongs Ave.

SWARTZ BUICK CO.

201 No. 3rd St.

G. A. GULLIKSON CO.

301 Strongs Ave.

SMITH MOTOR CO.

414 Clark St.

For

 **Normington's**
Gentle . . . thorough
C L E A N I N G

 **Normington's**
Gentle . . . thorough
L A U N D E R I N G

Phone 380

COMPLIMENTS
OF THE
SPORT SHOP

NIGBOR FURS

"Wisconsin's Largest Furriers"



- MILWAUKEE
- GREEN BAY
- STEVENS POINT
- MANITOWOC
- MADISON
- WAUSAU
- BERLIN

Member Federal Reserve and F.D.I.C.

After graduation you will be on your own and earning money. What would be better than a savings account at the First National? Even though the amount with which you open your account may be small, it is an important step toward building for your future.

No matter where you locate, you can carry your account with us by mail. We have many customers who do not live here but still carry their accounts with us.

THE FIRST NATIONAL BANK

Stevens Point

Capital & Surplus \$400,000.

Resources over \$8 million

SORENSEN'S FLOWER SHOP



See Your Friendly Florist
for HOME GROWN FLOWERS



HANNON'S DRUGS

- Prescriptions
- Cosmetics
- Luncheons
- Drugs
- Gifts
- Photographic Equipment

"Across from the Fox Theater"

STEVENS POINT BEVERAGE COMPANY



Bottlers of
— Point Special Beer —
Orange Crush, Lemmy and
other High Grade Soft Drinks

Phone 61

THE MODERN TOGGERY



The Store for
EVERY man

450 Main St.

Phone 80



FURNITURE
CORPORATION

Stevens Point, Wisconsin

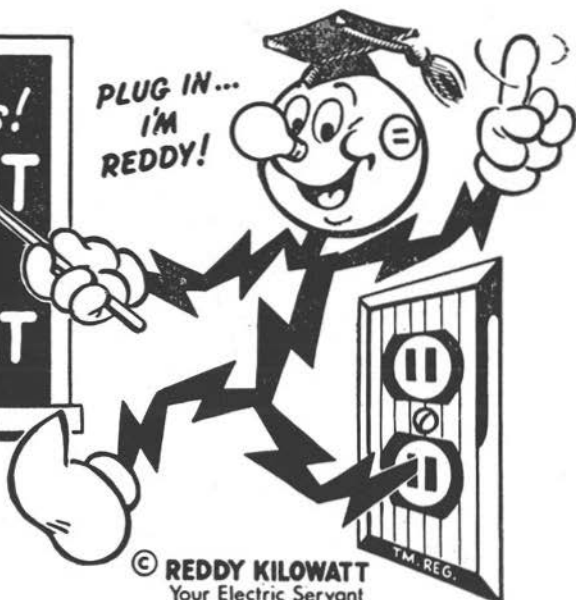
Fine Furniture For Children Since 1897

DELZELL OIL
COMPANY

Distributors of PHILLIPS 66 Gasoline



PLUG IN...
I'M
REDDY!



© REDDY KILOWATT
Your Electric Servant

CONGRATULATIONS
TO THE CLASS OF '51

WISCONSIN PUBLIC SERVICE CORPORATION

"Your table favorite"

at

**BAKE-RITE
BAKING CO.**



205 Wood St.

Phone 2300

Two Entire Floors Of Quality Footware
Nationally Advertised Brands



and we aren't "LION"

X-RAY FITTING

SHIPPY SHOE STORE

QUALITY in presidents
means "Abe" and "George" . . .



QUALITY in furniture means . . .

**JOERNS BROS.
FURNITURE
COMPANY**

Compliments of

GOODMAN'S

- Watch repairing
- Pearl restringing

JEWELERS

418 Main Street

STEVENS POINT, WIS.

"Better From Vetter"

For

Everything in



Phone 87

**THE
VETTER MANUFACTURING COMPANY**

BROCK ENGRAVING CO.



Madison, Wisconsin

Extends congratulations

to the graduating class

of 1951

Home of Old Cabin

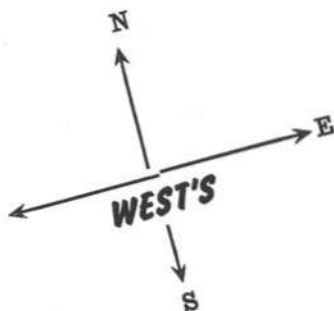
COAL

**BREITENSTEIN
COMPANY**

Roofing, Siding, Paint, Plaster,
Cement, Nails, Farm Machinery,
Feed, Coal and Coks,
Fire Tender Stokers

217 Clark St.

Phone 57



Be like the rest,
Get dairy products at WEST'S.

Plover, Wis.

For Graduation Photos
(Or Any Other Type of Picture)
We're the ones to See!

Wide Selection of Proofs, Prompt Service,
Reasonable Prices, Satisfaction Guaranteed

Bartosz and Clark
PHOTOGRAPHERS

414 Main St.

Phone 2507

BOSTON'S

Since 1888

We feature:

Joerns Simmons
Lullabye Kroehler
Philco Thayer
Lee's floor coverings

430 Main St.

Phone 250

It is a pleasure to work with the Iris Staff, planning the details that are necessary to produce a better "IRIS". We at

NATIONAL BOOKBINDING CO.

located in Stevens Point, are proud that we can offer the most comprehensive cover and bindery service in the midwest. The large increase in the number of yearbooks we bind each year is a hearty endorsement of the fine craftsmanship, fair dealing and dependable service.

TUCKER

Studio and Camera Shop

110 Strong's Ave.

Phone 407

GRAHAM-LANE

MUSIC SHOP

Strong's Ave.

Phone 442

HELEN FIEREK

Millinery and Accessories

119 Strong's Ave.

Phone 1605-J

SMART SHOP

425 Main St.

Phone 1520

LEROY'S

Ladies Ready To Wear

205 Strong's Ave.

Phone 787

SPOT RESTAURANT

Alex Morton, Prop.

414 Main St.

Phone 95

**SLICKER'S
TEXACO SERVICE**

216 No. 2nd St.

Phone 583

FRANK'S HARDWARE

"Just off the famous Public Square"

117 No. 2nd St.

Phone 2230

ARENBERG'SFashionable Jewelry
Since 1884

447 Main St.

Stevens Point

GREEN'S

Style Shop

116 Main St.

Phone 2459

AUTOGRAPHS

1944-1945
1944-1945
1944-1945
1944-1945

1944-1945
1944-1945
1944-1945
1944-1945

1944-1945
1944-1945
1944-1945
1944-1945

1944-1945
1944-1945
1944-1945
1944-1945

1944-1945
1944-1945
1944-1945
1944-1945

FACULTY INDEX

A

Allen, Bessie May	10
Anderson, Henry	18
Angel, Margaret	8, 112

B

Bainter, Monica	82
Blodgett, Alice	8
Boylan, Kenneth W.	8, 51
Burroughs, Leland M.	12, 77

C

Carlsten, Edna	7
Colman, Susan	7, 54, 55
Crow, Frank	12
Crow, Luella	
Cutnaw, Edith	16

D

Davis, Mildred	14
Diehl, Leah	14

E

Eagon, Burdette	10
Elstad, Edna	10, 112
Epple, Arol C.	12, 85

F

Faust, Gilbert	7, 14, 83
----------------------	-----------

G

Glennon, Bertha	7, 14
Gotham, Raymond	116

H

Hansen, Alice F.	12
Hanson, Gertie L.	8, 57
Hansen, William C.	5
Harris, Albert E.	8
Heel, Helen M.	14
Heenan, David	10
Hicks, James R.	12

I

Isaacson, Pauline H.	10
---------------------------	----

J

Jenkins, Warren G.	6
-------------------------	---

K

Kampenga, Dorothy	14
Kampenga, Nelis R.	8

Kerst, Marjorie S.	14, 56, 73, 86
Knutzen, Norman E.	10, 93
Kremple, Frederick A.	7, 16, 67

L

Levin, Adeline L.	16
Lewis, Robert S.	7, 10
Lyness, Arthur S.	85

M

Mason, Syble E.	8
Meston, Helen	16
Michelsen, Peter J.	12, 78, 94, 95
Moser, Miriam	16, 63
Mott, Joseph	7, 10, 118

N

Neuberger, Mary	18
Nixon, Floyd O.	8

P

Pfiffner, Elizabeth	6
Pieper, Edgar	8
Pieper, Evelyn	16, 56
Pierce, Burton R.	16
Pierson, Edgar F.	12

Q

Quandt, Hale F.	8
----------------------	---

R

Raddant, Beatrice	16, 70
Reppen, Nels O.	10
Rightsell, Raymond M.	7, 10, 53
Ritchie, Margaret M.	16
Roach, May M.	14, 56

S

Santer, Mary S.	14
Schmeeckle, Fred J.	14
Smith, Mary Elizabeth	12
Specht, Raymond E.	16, 82
Steiner, Herbert R.	6
Sylvester, Walter R.	16
Swallow, Marie D.	14

T

Tolo, Harold M.	16, 61
Trytten, Roland A.	7, 12, 80, 88

V

Van Arsdale, Gladys	12, 73
Varney, Vern V.	14

W

Wievel, Bernard F.	12
Williams, Mildrede L.	8
Wilson, Emily	10
Wright, Harriet M.	8, 61

STUDENT INDEX

A

Abrahamson, Sylvia	44, 62, 73, 87, 94, 95, 113
Ackerman, Thomas	46
Albers, Thomas	45
Alderton, Donna	32, 111
Alderton, Russel	
Aifheim, Barbara	
Allen, Dorothy	91
Allen, Kathryn	44, 58, 74, 75, 91
Altenburg, Arlene	42, 63
Anderson, Edythe	88, 90
Anderson, Gene	45
Anderson, James	48
Anderson, Raymond	46, 67, 100
Anderson, Robert	44
Andrews, Oliver	80, 98
Andrews, Robert	30
Anunson, Gary	48
Ariens, Patrick	45, 91
Arndt, Lee	
Aronson, Charlotte	48
Attleson, Mildred	36

B

Babcock, Bonita	28
Bacon, George	67
Baerenwald, Gerald	46, 57, 98
Bahr, Rodney	
Baltz, Dean	28, 59, 89
Barnes, Beverly	30, 58, 73, 78, 106
Barrett, Patricia	45, 87, 95

Bart, William	26, 86
Barton, William	
Bartosz, Jerry	67
Bassler, Don	
Bauer, Eunice	44, 63, 71
Bauman, Barbara	44, 60, 91
Baumer, Mary	46, 74, 91, 112
Bea, Barbara	42, 77, 90
Beawer, Irene	42, 85
Beck, James	
Behrendt, John	48, 59, 90
Bellis, Neil	
Benjamin, Jacqueline	42
Benson, Darrell	45
Benson, James	36, 81
Benson, Marjorie	46, 50, 71, 113
Benson, Sally	48
Benz, Don	
Berg, Kathleen	
Berg, Richard	
Berkhahn, John	
Bertz, Colleen	91
Bestul, Robert	38, 50, 65, 66, 78, 82, 95
Betry, Donald	
Beutler, Harlan	48
Bigalke, Gordon	46, 111
Blackman, Robert	
Blaies, Donald	48, 59
Blake, Bradley	
Bliese, David	59, 98
Boehme, Nancy	26, 78
Boettcher, Jerome	32, 59, 69, 86, 93, 111
Boettcher, Joseph	27, 60, 79
Bogaczyk, Steve	44, 66

Bradway, Kenneth	42
Bohl, Hermelinda	32, 59
Bohler, Wallace	46
Boote, Rosemary	65, 74
Borchardt, LeRoy	42, 80
Bordeau, Marjorie	46
Bosacki, Lawrence	
Bourcier, Gilbert	48, 91
Bostad, Robert	
Bowers, Alan	24, 66, 80, 87
Brandt, Jack	
Braem, Allen	34
Breese, Robert	
Brenner, Jeanne	34, 55
Briscoe, Lyle	48
Briselden, James	
Britz, Anthony	
Brotten, Phyllis	48, 87
Brown, Dorothy	44
Bruce, Charles	38, 66, 108
Bruha, John	44, 57, 86, 93
Bruha, Richard	45, 86, 93
Brunner, Letitia	65, 70
Brunsmann, Walter	67, 98
Brylski, Anthony	48
Buchalcz, Wayne	48
Buggs, Myra	46, 86, 105
Buhrdorf, JoAnn	46, 91, 113
Buss, Mary Jane	26, 58
Butler, David	42, 85
Buttke, Lois	
Buttke, Ronald	
Byrne, Romona	42, 55, 61, 73, 79, 82

C

Cable, William	42, 50, 77, 86
Cacic, Walter	42
Callsen, Constance	48, 91
Campbell, Harry	
Campbell, Howard	45
Campbell, Mary	46
Carpenter, Hugo	92
Case, David	86, 103
Castagna, Joe	
Cattanach, John	42
Cattanach, Margaret	34
Censky, Oscar	
Catura, Burnham	
Chaffee, Glenn	48
Check, William	48
Chick, Gilbert	66, 103
Christian, John	
Christoffersen, Rose	46
Cieslewicz, Stanley	
Ciula, Connie	105
Clark, Glenna	44, 50, 58, 62, 80, 85
Clark, Reuben	46
Clayton, William	44, 86, 90, 98
Clemens, Roy	48
Clintzman, Nellie	24, 44, 85
Cole, Robert	38, 86
Collier, John	
Collum, Gertrude	42, 58, 85
Compton, Curt	48
Conachen, William	57, 103
Connor, Sarah	44, 70, 90, 111
Conway, William	48
Cook, Robert	38, 50, 66

Cook, William	48, 69, 87, 93
Cooper, Terry	48
Corliss, Carol	46, 71
Corwin, Royal	48
Cox, Wilbar	36
Craig, Jeanette	42, 90, 113
Crandall, Billy	
Creed, William	
Crook, Betty	46, 50, 63, 71, 85
Crosby, Marjorie	42, 70
Cudnohufsky, George	
Cuff, Joann	46, 71, 85
Curry, James	98
Curry, Nancy	44, 56, 85, 88
Curtis, Elbridge	90, 93
Curtis, Eleanor	44, 58, 62, 73, 80, 111
Curtis, Hugh	42, 81, 90
Cutler, Janice	
Cutnaw, Mary Frances	
Czerniewski, Joan	

D

Dabareiner, Jack	
Dachel, Andrew	46
Dachyk, Kenneth	
Dahm, Dona	45, 113
Dahnert, Eileen	30, 55, 61
Dallman, Clarence	
Damrau, James	48
Daniel, George	
Davies, Bertram	82
Davis, George	
Davis, Richard	42
Davy, Carl	

DeGuire, Frank	44, 60, 69, 91, 93
Dehlinger, Bernice	42, 73, 77
Dehlinger, Robert	98
Deicher, Roger	46, 59
Depka, Clifford	
Derge, Patricia	44
DeRouchey, Delores	
Dineen, Donald	
Diver, Jeanette	
Dobeck, Jean	44
Doede, Harold	
Domack, Anita	42, 59
Douglas, Donald	
Douglas, Kelly	45, 98
Douville, Mary	42, 61, 65, 73, 91, 113
Dowd, Theodore	34
Downie, William	
Draeger, Mildred	26, 86
Drechsler, Henry	44, 91
Drew, Dwaine	95
Duchart, Charlotte	

E

Ebel, Jerry	48
Edmund, Caryl	46, 74, 85
Edwards, William	
Ellingson, Ardiss	46, 87
Ellingson, Beverly	30, 70
Ellingson, Richard	22
Elliott, Marvin	
Ellis, Loran	33
Elmer, Lila	42, 55, 63
Elsen, Ann	44, 91
Endle, William	46, 67

Engel, Arthur	
English, Roger	45, 98
Erickson, Iver	42
Eulberg, Janet	46
Extrom, Donna	48

F

Facklam, Edmund	
Fairbert, Gordon	42, 69, 86, 93, 109
Fait, Marvin	48
Farris, Ethel	46, 61, 73, 91, 94, 105
Fehrenbach, Joan	42, 70, 71, 94, 113
Feigley, Bernard	24, 42, 57, 69
Feit, Donald	28, 56
Feit, Raymond	
Feit, Robert	
Felton, Judy	45
Ferdon, Jean	43, 71, 88
Fieting, Ruth	45
Figel, Margaret	46, 62, 71, 113
Finch, Marjorie	30, 63, 70
Finch, Walter	48
Fink, Thora	42, 63, 90
Fischer, Virginia	45, 70
Flaherty, Mary	48, 91
Fletcher, Richard	46
Flint, Robert	45, 86
Flynn, William	69, 98
Fontaine, Reta	42, 63
Forell, Roger	44
Fossatti, Mary	46
Foster, Jack	48
Fox, Patricia	42, 91
France, Mary Lou	38, 88

Francis, Richard	79, 111
Freeman, Lucille	46, 94, 95
Fredrickson, James	
Freiberg, Ashley	46
Freier, Karl	
Fresley, John	48
Friberg, Isla	28, 59, 70
Fritsch, Clarence	44
Fritsch, James	
Froggatt, David	
Furstenberg, Edward	30, 59, 69, 77, 80, 108

G

Gage, Constance	46
Garska, Kenneth	22, 69, 86, 98
Geenan, Mary	36, 91
Genrich, Fred	
Gerber, Frances	45, 91, 111
Gertschen, Phyllis	24, 73, 88, 105
Getlinger, Jane	30
Gibson, Stanley	
Gierl, Joanne	94
Gilkay, Irene	24, 55, 73
Gilbert, Marlyn	86
Gilbert, Robert	42, 81, 88
Gilbertson, Betty	32, 62, 71, 95
Gilbertson, Carole	42, 58, 108
Gill, Robert	
Gmeiner, Virginia	38, 59, 61, 70, 77, 111, 113
Goebel, Nancie	42, 70, 71, 94, 95
Goetz, James	66
Gostz, William	22, 81
Goman, Loraine	46
Goodland, John	45

Gossage, Marilyn	45, 91
Graham, Roger	48
Graham, Roy	
Grasamkee, Rhode	
Gravitter, Patti	
Greathouse, George	21, 42, 61, 66, 82
Greaton, Wilson	46
Grimstad, Betty	
Gronski, Norbert	46
Gruen, Janice	44, 62, 73, 78, 85, 113
Gruling, Robert	
Gruman, John	
Gryniewski, John	30
Guenthner, Rae	24, 90
Guenther, Rona	

H

Haas, Ella	48, 86
Hager, Barbara	46
Hall, Jacqueline	38, 70, 106
Hall, Richard	81
Hamele, Warren	104
Hamm, Maurice	
Hanke, Charles	26
Hanneman, Robert	48
Hansen, Margaret	
Hansen, Martin	
Hansen, Violet	34, 74, 75
Hanson, Barbara	46, 71, 94, 95, 113
Hanson, Judith	4
Harrison, Jack	
Harrison, Patricia	24
Hartleb, Marlene	44, 58, 73
Harvey, Douglas	91

Havitz, Edward	28, 98
Hedquist, Eric	46, 48
Heise, Jean	46
Heiser, LeRoy	42, 86, 93
Held, Muriel	70, 71, 78, 94, 95
Helgerson, Donald	42, 77, 81
Helminski, Alfred	98
Henderson, Roberta	22, 79
Hendrick, Donald	32, 65, 69, 73
Hendrickson, Roger	
Herman, LaVern	45, 69
Herrick, Clarence	
Herrington, Norma	48
Herrmann, Donald	
Hesson, John	
Heuer, Edwin	42
Heuser, Anthony	
Higgins, Barbara	28, 74, 94, 95
Higgins, William	
Hill, Charles	
Hill, Robert	
Hirzy, Ferdinand	
Hirzy, Ilse	42, 91
Hoag, Marlene	46, 71
Hodgdon, Charles	44, 69
Hoeft, Anita	44, 61, 63, 86, 94
Hoffman, Frank	44, 80
Hofman, Vivian	74
Hoglund, Nathalie	42, 61, 70
Hohensee, George	38, 93
Holding, Patricia	44, 63, 85
Holm, Elizabeth	26, 73, 113
Holm, Jeanette	73, 87
Holm, Norvin	30, 69, 80, 93

Holstein, Gretchen	70, 71
Hoppe, Max	48, 103
Hoppe, William	
Horn, John	
Horn, Rudolph	22
Hubbard, Grace	
Hummel, Eleanor	26, 70
Humphrey, Bruce	
Hurrish, Dan	48
Hyer, James	42, 82, 91

I

Irvine, John	45
Isberner, Helen	44, 63, 105

J

Jacoboski, Louis	42, 50, 59, 67, 77
Jacobsen, Edward	46, 69, 86
Jacobson, Shirley	42, 77, 79, 105
Jacobson, O.	44
Jacobus, Richard	45
Jaeschke, Don	38, 66
Jansen, Richard	
Jarnick, Phyllis	44, 58, 62, 73, 80, 85
Jarvis Ronald	
Jauch, Norma	46, 62, 91
Jeffers, Carrold	
Jelinek, Jerry	81, 86, 98
Jensen, Doris	42
Jersey, Joanne	46, 71, 91
Jerschele, Richard	
Joanis, William	77, 86
Johnson, Bruce	57, 81
Johnson, Dorothy	48

Johnson, Harry	36, 50, 79
Johnson, Marvin	62, 69, 103
Johnson, Robert	42, 86, 98
Johnson, Russell	
Jones, Delores	26, 79, 82, 105
Jones, Margaret	42, 58, 73, 79
Jones, Philip	45, 100
Junior, Bernhard	48

K

Kalka, Harriet	
Kalkofen, Robert	45
Kampenga, Amy	44
Karavakis, Memo	
Karier, Clarence	24, 66, 82, 91
Karls, Stanley	93, 98
Karner, Karol	60, 73
Karsten, Robert	22, 93
Kavanaugh, Marian	38
Keach, Jean	46, 85
Kearns, Rose	45, 62
Kellogg, Charles	81, 82
Kernohan, Clarence	
Kerr, Robert	36
Kienitz, Charles	
Kijak, Adeline	
Kirshling, William	
Kish, Dennis	46
Kitzrow, Gerald	38, 66
Klesmit, Clarence	32
Kline, Arlynn	
Klinner, Lorna	46, 87
Knickerbacker, William	
Knoll, Donna	48, 111

Knope, Marilyn	42, 58, 70, 106
Knudtson, Leland	
Knuf, Evelyn	36
Knutson, Arleen	38
Knutson, Willard	93
Koch, Ruth	58
Koch, William	36, 98
Koehler, Robert	46
Koehn, Kenneth	98
Koeppen, Howard	
Kohls, William	46, 93
Kolinski, Helen	48
Konop, Catherine	26
Konopacky, David	
Konopacky, Robert	
Korth, Earl	66
Korth, Marilyn	95
Kott, Donald	48
Kott, Royal	36, 103
Kranski, Germaine	30, 74
Kraus, Chandler	
Kraus, Robert	59
Kreger, Roger	
Krell, Lolita	42, 60, 91
Krentz, Francis	48
Krienke, George	45, 98
Kristianson, Robert	88
Krueger, Lorna	26, 73
Krueger, Roland	44, 86, 98
Kruse, Carla	38, 78, 87
Kubisiak, Shirley	48, 60
Kuhnke, Dorothy	48, 58, 74
Kulick, Ken	93, 98
Kumbier, Howard	66
Kussman, Richard	86, 93

L

Laabs, Bernard	48, 103
Laabs, Quinten	45, 98
LaFave, Robert	48
LaLeike, Fred	22, 60, 79
LaLeike, Helen	22, 65, 79
LaMarche, Gerald	45
LaMarche, LaVerne	
Lampert, Molly	42
Landerman, Bernard	
Landowski, Isabelle	
Landt, Shirley	45, 88, 90
Lane, Carman	
Lane, Joy	46, 73, 86, 113
Lang, Ruth	22, 71
Lange, Elaine	38, 45, 86
Langton, John	48
Larsen, Donald	21
Laszewski, Charles	
Laszewski, Ray	
Laszewski, Roy	82
Lawrie, Marjorie	42, 63, 74, 90
Lawton, James	45
Leahy, Kathleen	44, 62, 73
Lecy, Raymond	66
Leichtenberg, Jack	98
Lemiesz, Phyllis	44
Lemke, Lois	46
Lerer, Isaac	
Leupold, Avonne	48, 86
Lewandowski, Alfred	
Lewis, Barbara	28, 73, 79, 80
Lightner, Corliss	
Lindquist, Norris	42, 65, 66, 98, 106

Lippert, Eugene	
Lippert, Roderick,	
Lodzinski, Fred	
Long, Alvin	42, 61, 69, 80, 82
Lorenzen, Richard	28, 98
Lovdahl, Lillian	46, 50, 56, 111
Lucke, Richard	
Luedke, Duane	48
Luhm, James	42
Luhm, John	26, 69, 82, 86
Lund, Mary	55, 59, 73
Lund, Richard	32
Lund, Thomas	

Mc

McCandles, Edward	93
McCutcheon, Dale	24
McGoff, Betty	48, 91
McGown, Amy	
McInnis, Pat	48
McIntee, Radine	48
McMahon, Robert	66, 81
McMillan, Malcolm	
McNamara, Bart	46, 111

M

MacIntyre, Kathryn	34
Madson, Richard	
Magee, Catherine	45, 58, 85
Malchow, Nancy	45, 89
Malik, Doris	
Mallow, John	69, 82
Mangold, Donald	45
March, Peter	

Marchel, Jean	48
Marchel, Robert	
Marking, Harriet	32, 54, 87, 94
Marko, Leonard	
Marks, Gordon	
Marquard, Gilman	32, 45
Marros, Virginia	42, 73
Marsh, Robert	42
Martens, Janis	48
Marth, Delphine	34, 74, 75
Martin, Dick	48
Martin, Harlan	36, 93
Maslowski, Donald	
Mason, Lois	
Matzke, Erwin	42, 93
Mayer, Joseph	
Mayer, Marvin	54, 66, 87
Mayer, Norma	42, 60, 61, 62, 73, 86
Mead, Maurice	34, 59, 69, 77
Mehlum, Ronald	
Mehne, Betty	36, 63, 65, 74, 75, 86, 94, 105, 110
Meister, Arline	45, 74, 75, 86, 94
Meleski, John	100
Melzer, Yvonne	46
Menzel, Bruce	34
Metzger, William	59
Mews, Jean	48, 86
Mews, Joan	86
Meyer, Leonard	
Meyer, Ronald	
Meyer, A.	45
Miller, Dolores	46, 75
Miller, Harold	46, 111
Miller, Norbert	98, 100

Miller, William	46
Mingenbach, William	
Mow, Carol	46, 85
Moe, Karen	48
Moen, Byron	
Moll, Jack	46
Moll, Joyce	44, 55, 73, 86
Moody, John	42
Moore, Everett	59, 60, 79
Moore, Jack	24
Morgan, David	45, 86, 103
Morgan, Donna	42, 105
Morgan, Robert	98
Mosey, George	22, 69, 108
Mozuch, Irving	28, 82
Mueller, Beverly	45, 74, 78, 87, 95
Mulady, James	48, 59, 69, 93
Mulvihill, Richard	82
Mundt, Raymond	
Myers, Marjorie	22

N

Nagy, Paul	
Neerhoff, Muriel	34, 62, 74, 75, 94, 105, 112
Negaard, John	45
Neitzel, Harold	98
Nelson, Barbara	45, 73, 78, 87
Nelson, Philip	34
Neuman, Louis	45
Newhall, Dolores	44, 58, 73, 85, 94
Nikolai, Thomas	42
Nikolay, George	82, 103
Noch, Bernelda	48
North, Arthur	85

Nottleson, Barbara	46, 56, 59, 71
Novak, Lawrence	46
Nulty, Helen	45, 73
Nyberg, Kenneth	88, 89

O

Oberst, Thomas	
Obinger, Harriet	28, 105
O'Brien, Daniel	
O'Brien, Patrick	42, 60, 66
O'Donnell, Thomas	
Oelrich, Louise	30, 50, 55, 63, 86, 88, 95
Okray, Robert	24, 66
Olsen, Donald	69, 82, 86, 93, 98
Olson, Geraldine	48
Omernik, Dorothy	34, 74, 91
Omernik, Leo	
O'Neill, Dorothy	42, 87

P

Pagel, Dalles	48
Panke, Mary	46, 74, 91, 112
Papke, Ross	45, 90
Parkin, Arlon	
Parkinson, Galen	28, 57, 80, 81, 86
Paulsen, Eugene	48
Paulson, Bob	46, 69, 86, 103
Paulson, Gene	46, 69, 86, 103
Pautz, Nancy	44, 60, 74, 75
Payne, Florence	
Peabody, Mary	46
Peplinski, Beatrice	74, 80
Perry, Jeann	44, 74
Petersen, Mary Ann	42, 105, 108

Peterson, Harvey	36
Peterson, Herbert	
Peterson, Lloyd	32, 59, 65, 86, 108
Peterson, Phyllis	24, 58, 65, 73, 108
Peterson, William	57, 81
Petranek, Robert	38, 66, 82, 103
Pettack, Keith	48
Phelan, Ann	42, 58, 70, 91
Piatt, John	48
Pickett, Jewell	
Piehl, Jacquelynn	46, 71, 94, 113
Piekarski, Michael	
Pierce, Jack	
Pierce, Kay	32, 85
Pierre, Winnifred	44, 58, 91
Pinkerton, Joyce	45, 70
Pionke, Donald	
Piotrowski, Mary Ann	
Place, Jerome	26
Pipe, Carla	46
Plainse, Delores	42, 85
Plank, Edward	46
Plath, William	32
Pliska, Conrad	
Pliska, Edward	32
Plowman, Ralph	57
Polivka, Bernadelle	
Polka, Chester	42, 82, 91, 93, 98, 100, 109
Polum, Gerald	
Polzin, Eugene	67, 93
Polzin, Jack	45, 82
Pone, Gundaris	
Pope, Barbara	44
Popeck, Jack	44, 66, 93, 98, 111

Potter, John	98
Powell, Jane	46, 85, 112
Precourt, Dorothy	28, 79
Promen, Richard	81
Prue, Helen	
Purchatzke, Bryan	45, 98
Putzier, Robert	30, 86

Q

Queram, Norman	86
Quinn, Lorraine	46, 91

R

Raaths, Ardis	44, 60, 70, 86
Raczek, Camille	48
Raddant, Eugene	22
Raddant, Maynard	
Ragsdale, Dorothy	
Randlett, James	
Rasmussen, Joyce	44
Rataczak, Dolores	42, 91
Ravey, Phyllis	
Rebella, Dorotheanne	42, 60, 77, 111
Redmann, Andrew	45, 66, 106
Redmond, Alice	46, 91
Reed, Walfred	48
Reimann, Vernon	
Reinecke, Helen	44, 94, 75, 86, 94, 113
Reineking, Eldora	48, 58, 74
Reinholdt, Richard	46, 93
Reuterskiold, Barbara	48
Rezin, Patricia	
Reznichek, Mary Jo	48, 85, 94
Rhode, Ransom	

Richetto, Emil	89
Richmond, Arlene	
Richmond, Doris	48
Rindfleisch, Dale	46, 86
Ringstad, Leonard	42
Roberts, Ralph	38, 66, 77, 111
Roberts, Russell	
Robertson, Jean	42, 59, 70, 77, 111
Robinson, Charles	44, 50, 85
Row, June	48
Roeber, Kent	
Rohde, William	46
Rose, Kay	46
Roseth, John	42
Roshak, Michael	
Ross, David	48, 60, 86
Rothamer, James	
Rothman, Dejon	44, 85
Rothweiler, Eunice	32
Roy, Dolores	46, 74
Roy, Lucien	66, 91
Rucinski, Philip	48
Rude, Robert	
Rudersdorf, Ward	
Rued, Gerald	79, 98, 100
Ruff, William	
Ruffing, Elaine	26, 74, 94, 95
Rulseh, Marian	46, 95, 113
Russell, R.	42

S

Salvin, Theodore	
Samelstad, Walter	98, 100
Sandberg, John	86

Sanders, Donald	
Sanks, William	98
Sannes, Nancy	42, 70, 82, 88, 109
Sarbacker, Jean	45, 70
Sargent, Donald	26
Sauter, Kenneth	28
Sazama, Mary	46, 91
Sbertole, Elmarie	42, 95
Schadewald, Frederic	46, 86, 93, 100
Schadewald, Mary	36, 70, 80, 85
Schaefer, Verna	44, 58, 63, 85
Schantz, Marcella	28
Scheel, Audrey	46, 71
Scheel, Jerry	98
Schein, Ruth	42, 61, 70
Schilling, Marilyn	48, 58, 74, 94, 113
Schmeeckle, Wilma	44
Schmidler, Frank	66
Schmidt, Nancy	46, 113
Schmidt, Wyman	48
Schneiders, Don	24, 42, 98, 100, 103
Schoff, Arthur	28, 50
Schommer, Mark	98
Schrank, Dennis	67
Schrank, James	
Schroeder, Colleen	42, 91
Schuelke, Marianne	42
Schulist, Joe	45
Schultz, Doris	48, 74, 75, 86, 94, 105
Schultz, Vivian	48
Schultz, Donald	42, 50, 93, 111
Schultz, Phyllis	46
Schumacher, Donald	48, 93
Schwab, Marian	21

Schwartz, Joanne	44, 74
Schwebke, Julie	34, 70, 71
Scribner, Sally	48, 62, 71, 111
Searles, Mary	45, 50, 104
Severson, Dorothy	30, 42, 86
Shafranski, Clifford	48
Sharkey, Jack	46
Shelley, A.	
Sherman, Louise	28
Shinkan, William	
Sievers, William	
Skowronski, Patricia	42, 60, 79
Smith, Stanley	45
Sommers, Ray	45
Sonnenberg, Shirley	46, 60, 62, 88
Sorenson, Gordon	42, 85, 88, 109
Spaulding, Willard	57, 81
Specht, David	86, 98
Spees, Garth	59, 93
Spencer, Faith	22, 74
Stadler, David	
Stadler, Joseph	
Stamsta, Duane	48
Stankevich, Kathryn	45, 58, 61, 91
Stashek, Agnes	48
Stassel, Donald	42, 85
Stenz, Jerry	98, 103
Stevens, Ernest	
Stevens, George	34
Stewart, Kenton	69
Stewart, Walter	81
Stordock, Gilman	
Stoehr, James	98
Stoehr, Janice	21

Storm, Ralph	34
Sturzl, Rae	26
Sullivan, Clifford	
Summers, Joan	44
Sutton, Sharon	46, 71, 85, 112, 113
Swanke, Suzanne	42, 61, 70, 71, 78, 79, 94
Swanson, Clifford	48, 104
Swanson, Harold	
Synott, Joanne	113

T

Tallmadge, Ruth	46, 58, 85, 94, 113
Tanner, Douglas	46
Tate, Suzanne	
Tauchen, Alice	44
Taylor, Curtis	
Taylor, Donald	
Teetzen, Ruth	44, 58, 86
Tellock, Carol	24
Tessmer, Amaryllis	24
Thirkill, Margaret	42, 85
Thomas, Peter	45, 59
Thomas, Wilbur	
Thompson, Donna	48, 71
Thompson, Dorothy	59, 73, 87
Thompson, Mary	30, 90, 106
Thorpe, Margaret	44, 62, 63, 86
Tibbetts, Beverly	42, 61, 63, 70, 95, 113
Tillema, Donald	44
Timler, Victor	48

Todd, Dean	48
Topp, Donald	
Toser, Richard	45
Towne, Leland	48
Tracy, Jim	44
Trapino, Virginia	45
Trotier, Kent	48
Tucker, Charles	
Turner, Garie	46
Turzenski, Richard	42, 54, 60, 66

U

Ullsperger, Robert	46
--------------------------	----

V

Van De Bogert, Philip	
Venn, Raymond	34
Veselak, Kenneth	22
Vissers, Donald	45
Vogel, Geraldine	46

W

Wade, Royce	48
Wagner, Mary	48, 58
Wagner, William	100
Wallner, Laurretta	
Wanke, JoAnn	46, 71
Warner, Brice	30
Way, Wilbur	44, 59
Weber, Norma	22

Webster, James	46
Weinig, Walter	
Weinmann, Albert	
Weisbrot, Barbara	44, 91, 105
Weisen, Pauline	46, 87, 88, 113
Weihiak, Alvina	48
Wenzel, Edward	48
Wesley, Frank	66, 78
West, Joyce	42, 94, 95
Whelihan, Edward	24, 66
Wiener, Richard	46
Wiersma, William Jr.	44
Wilde, Donald	48
Wilde, Raymond	45
Wilder, Harry	48
Wilkinson, James	44, 66
Williams, Joan	46, 86, 94
Williams, Madeline	32
Williamson, Ila	22, 60, 62, 73
Wilson, Lloyd	44
Witter, Delores	36, 45, 74, 75, 86
Wolfe, Winston	48
Wood, Roger	46
Wotruba, Dorothy	36, 91
Wysocki, Joanne	44, 78, 111

Y

Yndestad, Wilferd	48
Young, Jack	
Young, Rawley	57, 86

Z

Zakrzewski, Ronald	
Zanella, Florence	26, 74, 91
Zarda, Elaine	46, 58, 61
Zastrow, Marlene	44
Zellinger, Joyce	48, 58, 90, 94, 113
Zeman, Lorraine	42, 59
Zick, Willis	48, 113
Ziebarth, Beverly	45, 74, 87
Zimmerman, Idella	95
Zimmerman, Karl	
Zuelke, Anne	46, 63, 86
Zukoski, Harold	48, 91
Zurawski, Leonard	46
Zwolinski, Raymond	67

AUTOGRAPHS

AUTOGRAPHS

AUTOGRAPHS

