

Luis
'52

IRIS

1952



*Published by the students
Wisconsin State College
Stevens Point, Wisconsin*

We look back. . .

We look forward. . .

We look around. . .

*to present
memoirs of 1952.*

We Look Back . . .



S.K. Kerk



In Recognition

Reflecting upon the contributions of Miss Bessie May Allen and Miss Helen Meston to CSC requires looking back upon many fruitful years. For thirty-nine years Miss Allen has been the successful director of the Home Economics department, nurturing it and watching it grow into one of the outstanding departments of the state. She has served tirelessly, not only as teacher, adviser and friend, but has also taken an active part in all educational organizations.

Miss Allen has also enriched her own life and those of her students and friends by her extensive traveling both here and abroad. It is the sincere wish of all who have known and worked with her that among her happy memories, CSC will have a favored spot. With these thoughts and with deepest appreciation we dedicate to Miss Allen the Iris of '52.



and Appreciation

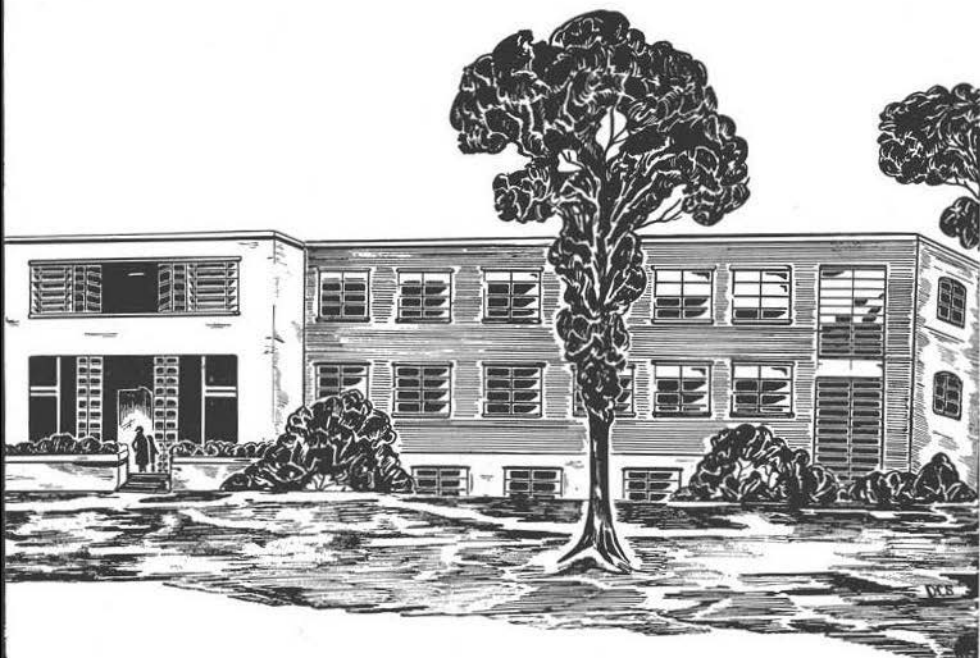
Today as we dedicate the Iris of '52 to you, Miss Meston, we are mindful of the values that yesterdays have upon as many tomorrows, tomorrows which will be richer, happier and more secure because of your guidance, counsel and encouragement. We are mindful of the importance of sincerity, kindness and understanding in daily living, gifts which you have so generously bestowed upon all who came to know you. We are mindful of the invaluable personal as well as professional edification both you and Miss Allen have given and as you take up your many other interests, it is with a knowledge that to your lives will return the bountiful measure you have meted out.

Much happiness, is our wish, to you both.



We Look . . .





Forward . . .

This book is a record of the year that you have spent here at Central State. We are sure that if you get out your spy glasses and take a backward look with us, you will find our two good friends who have done important things for Central State. They will be deeply missed by all in the years following.

Then, shielding your eyes against any brilliant light from the celebrities, peer forward into the misty future of the graduate and underclassmen, remembering to keep in mind their ideals of happiness and hopes for success.

Before going any further, drop your books and take a look around at the things that have been happening this year. You may find yourself looking quite friendless while running the gauntlet of registration, or again, looking lively and full of chatter after a day of classes.

The Iris has kept an account as best it could of everything you did this year. We hope you like what you find.

The Editor.

One of the most impressive and inspiring assemblies of the year is the Convocation ceremony in which all the students of CSC have the opportunity of viewing the entire faculty in their caps and gowns of their Alma Mater. It is an occasion in which we reflect upon our good fortune in having such outstanding members in our faculty and administration as our teachers and advisers.

Twenty four years ago when CSC became a state teachers college it consisted of forty six instructors. Today our teaching staff consists of fifty nine, many who have contributed much to give CSC the reputation that it has, the friendliest teachers college in Wisconsin.



Faculty and Administration



President William C. Hansen

Administrative



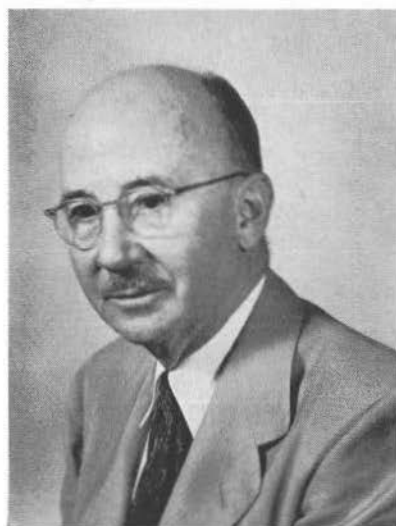
WILSON DELZELL
REGENT



RAYMOND GOTHAM
DIRECTOR, TRAINING SCHOOL



WARREN JENKINS
DEAN OF LETTERS AND SCIENCE



RAYMOND RIGHTSSELL
DIRECTOR,
SECONDARY EDUCATION

Staff



SUSAN COLMAN
DIRECTOR, PRIMARY EDUCATION



ELIZABETH PFIFFNER
DEAN OF WOMEN



QUINCY DOUDNA
DEAN OF ADMINISTRATION



HERBERT STEINER
DEAN OF MEN



BESSIE MAY ALLEN



SIDONE ANDERSEN



DR. HENRY ANDERSON



MONICA BAITER



ESTHER BERNDT



RICHARD BERNDT



KENNETH BOYLAN



LELAND BURROUGHS



EDNA CARLSTEN



JOANNE CERNEY



FRANK CROW



EDITH CUTNAW



MILDRED DAVIS



LEAH DIEHL



BURDETTE EAGON



AROL EPPLÉ



GILBERT FAUST



BERTHA GLENNON



ALICE HANSEN



GERTIE HANSON



ALBERT HARRIS



HELEN HEEL



PAULINE ISAACSON



DOROTHY KAMPENGA



NELIS KAMPENGA



JESSIEMAE KEYSER



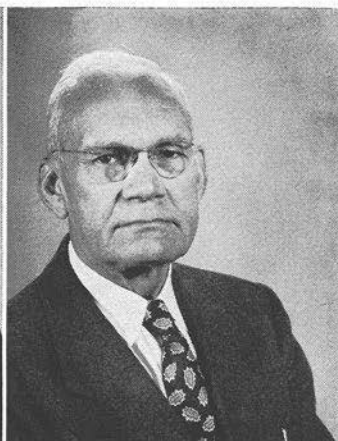
NORMAN KNUTZEN



ROBERT LEWIS



MARTHA LOSS



ARTHUR LYNES



TOULA MARROS



SYBLE MASON



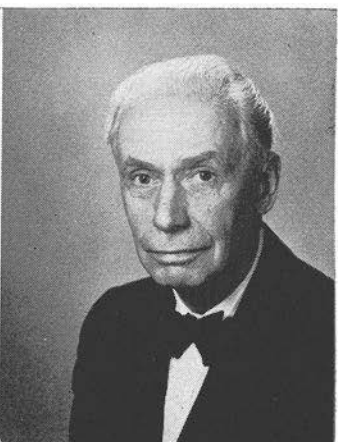
HELEN MESTON



PETER MICHELSEN



MIRIAM MOSER



JOSEPH MOTT



MARY NEUBERGER



FLOYD NIXON



GRACE PEHOSKI



BURTON PIERCE



EDGAR PIERSON



HALE QUANDT



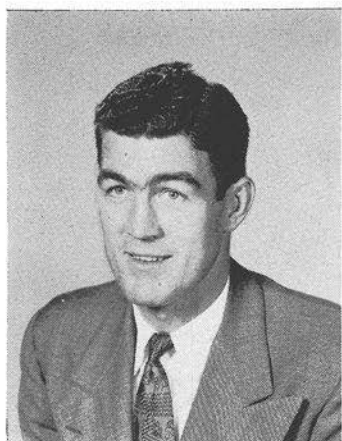
NELS REPPEN



MARGARET RITCHIE



MAY ROACH



JOHN ROBERTS



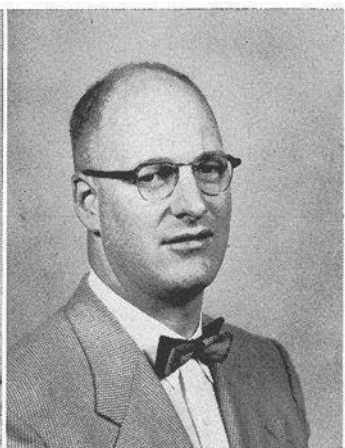
CAROLYN ROLFSON



MARY SAMTER



FRED SCHMECKLE



RAYMOND SPECHT



MARIE SWALLOW



HAROLD TOLO



ROLAND TRYTTEN



MARY ULLMAN



GLADYS VAN ARSDALE



ROBERTA VAUGHN



BERNARD WIEVEL



MILDREDE WILLIAMS



EMILY WILSON



CECILIA WINKLER



BEATRICE MERKHOFFER



IRVING MOZUCH



ELLEN SPECHT

Everybody Goes to School at CSC



Five year old Tommy Korn, above, attends the kindergarten at the Training school while Mom and Pop Korn strive for their degrees as cracker jack teachers at the college.



Mary Douville, student teacher, gives a helping hand to her pupil, Nola Jean Harris.

Professional Organizations



Top Picture

Bottom Row: Ringstad, L., Korn, Mayer, M., Polzin, J., Carpenter, Raschka.

Top Row: Erickson, Tibbetts, Brittnacher, Holt, Miller, D., Ziebarth, Zastrow.

Standing: Abney, Kelley, Extrom.

Bottom Picture

Bottom Row: Fairbert, Dallman, Turzenski, Christiansen, Abney, Heiser, Polzin, J.

Top Row: Brunsmann, Krell, Rataczak, Sonnenberg, Gruen, Sorensen, Heuer, Robinson, Cacic.

Round Table

intermediate and upper elementary division



Row 1: Ide, Court, Forth, L., Nelson, J., Forth, C., Crook, Benson, Lane, J.
 Row 2: Miss Colman, Korth, M., Rickel, Blozynski, Brandt, Smith, Cuff, Fox, Bea.
 Row 3: Colina, Moll, Hofman, Rothman, Baumer, Panke, Lawrie, Allen, Hoelt, Lebrick.
 Row 4: Rodriguez, Thompson, D., Payne, Ravey, Ringstad, E., Isberner, Thirkill, Pautz, Tauchen, Sarbacker, Barrett, Cram.
 Row 5: Goebel, Mlada, Peterson, M., Aronson, Imig, Gage, Huetl, Suckow, Sheets, Charlesworth, Smith, Marrows.
 Row 6: Jensen, D., West, Leahy, Abrahamson, Zahradka, Collins, Michaelis, Kabot, Domack, Fuller, Bahr.
 Row 7: Lund, Altenburg, Schuelke.

Primary Council . . . Rural Life



Row 1: Dr. Doudna, Gerber, Ferdon, Mews, Jean, Mews, Joan, Klinner, Stashek, Leitner.
 Row 2: Melzer, Colrue, Taylor, B., Wanke, Lemiesz, Redmond, Miss Winkler, Noah, Goman.
 Row 3: Miss Roach, Wallner, Wagner, Dreschler, Lovdahl, Haas, Tischendorf, Bronk, Landowski.
 Row 4: Hackel, Caskey, Marchel, Lange, Boneske, Holding, Cuila, Schullist.
 Row 5: Gerner, Suehring, Johnson, D., Williams, Raaths, Schmidt, Lensmire, Jones, H.
 Row 6: Check, Habeck, Rucinski, Teetzen, Trotter, Nulty, Olson, Loss.



Bottom Row: Lecy, Firkus, Krell, Turzenski, Miss Ullman, Mr. Eagon, Heiser, Hyer.
 Top Row: Miller, M., Ringstad, L., Reda, Bliese, Heuer, Cacic, Mayer, M., Brittnacher.

Future Teachers of America . . . Forum



Row 1: Papke, Hoffman, Wade, Gilbert, M., Bruha, R., Boettcher, Helgerson, Rhode.
 Row 2: Ciula, Held, M., Zellinger, Schilling, Kuhnke, Wagner, Andrews, Endle, Kleist.
 Row 3: Schulist, Long, Bruha, J., Wiersma, Beste, Kline, Kott, Zukoski, Fischer, Cable.
 Row 4: Jacobson, Christoffersen, Rebella, Garbrecht, Holm, Jones, Plainse, Tallmadge, Skowronski,
 Mr. Richtsell.
 Row 5: Schroeder, Johnson, Polivka, Richmond, McIntee, Schultz, D., Thompson, K., Phelan,
 Gilbertson, C., Elsen.
 Row 6: Ullsperger, Connor, Allen, K., Collum, Schmeekle, Hartlieb, Newhall, Dahm, Stankevich,
 Pfiffner, Curtis.
 Row 7: Conway, Reineking, Polka, Schaefer, Teetzen, Taylor, Borchardt, Wood, Miller, Richetto,
 Jarnick.



Bottom Row: Reda, DeLaura, Sommers, Behrendt.
Top Row: Bruha, R., Reed, Sauk.

Rifle Club



Sommers, DeLaura, Bruha, R., Reda.



Bottom Row: Miss Wilson, Clark, Hiller, Pheian, Schroeder, Jones, M., Wagner, Polivka, Miss Meston.
 Top Row: Kopperud, Rickfort, Conover, Kucera, Schroeder, Breymann, Bricco, Teetzen, Schaefer, Gilbertson.

Home Economics Club



Bottom Row: Hartleb, Newhall, Kuhnke, Schilling, Elsen, Schmeeckle, Curtis
 Top Row: Pierre, Allen, Tallmadge, Zellinger, Jarnick, Reineking, Dahm



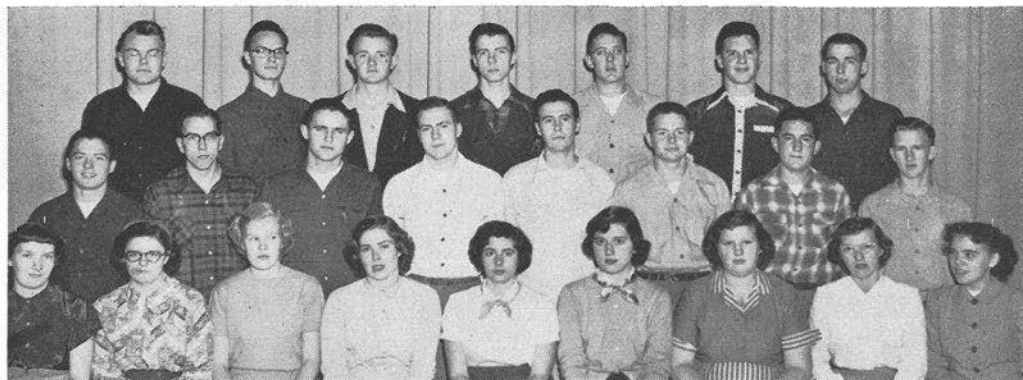
THE PROFESSIONALS RELAX . . .The Rural Lifers on slippery sox . . .
 Fingertip control . . . Pierre, Pinkerton, Pipe, Plainse, Plank, Plowman . . .
 Balancing the Round Table books . . . Thanks much, Miss Colman.



Seniors last year — Freshmen this year. Many once were at the top. Now they have begun over again, studying new courses, meeting new friends. Second semester brought pledge bids for sororities and frats. The Freshman officers were John Miller, president; Harold Schumacher, vice-president; Bill Schweinler, treasurer, and Cleo Gilbert, secretary. Jean Wagner and Lynn Olson, above, are preparing the design for the annual Christmas concert.



Bottom Row: Jones, H., Lang, M., Gilbert, C., Nelson, M., Yentz, M., Schuls, M., Lensmere, J.
 Middle Row: Suehring, J., Lehman, M., Kellerman, W., Wagner, J., Michaelis, P., Jones, J., Glewen, S., Dill, M.
 Top Row: Davies, N., Young, R., Reineke, W., Karau, M., Schneeberg, D., Stephanek, F., Kleise, J., Lodzinski, D.



Bottom Row: Hoefft, P., Malick, P., Clayton, J., Church, C., House, C., Olson, P., Kucera, R., Gilbertson, D., Bricco, V.
 Middle Row: Rutherford, T., Braun, A., Meyer, A., Wislinsky, R., King, J., Anderson, W., DeLaura, R., Zingler, L.
 Top Row: Due, A., Kritz, K., Holmgreen, J., Reed, R., Sonnentag, W., Wagner, I., Paulson, J.



Bottom Row: Collins, G. Kabat, C., Schlottman, L., Domack, E., Palmer, D., Brandt, J., Smith, J.
 Middle Row: Butts, J., Albrightson, D., Bahr, N., Bulluk, P., Olson, L., Holt, C., Domack, J., Hoffman, M.
 Top Row: Ziemann, J., Carpenter, V., Johnson, K., Nelson, H., Blomiley, B., Bostad, B., Purchatzke, L.



Bottom Row: Polzin, R., Marchel, A., Ciula, M., Borja, F., Thurston, J., Zahradka, B., Langfeldt, L.
 Middle Row: Bronk, S., Haertel, R., Froeba, N., Helixon, P., Arnett, E., Schulist, G.
 Top Row: Eide, E., Mueller, C., Wedde, W., Rutz, J., Krueger, G., Graham, R., Eibergen, D.



Bottom Row: Hiller, A., Giese, P., Hranicek, A., Kalepp, B.
 Middle Row: Held, B., Smith, M. A., Seif, D., Schroeder, J., Schultz, J.
 Top Row: Deutsche, G., Hellner, A., Hoehne, J., Swanson, H., Brost, N.



Bottom Row: Caskey, P., Gerner, D., Sheets, S., McLees, D., Nelson, J., Suckow, G., Forth, C., Forth, L.
 Middle Row: Hazelwood, P., Schwartz, H., Richmond, H., Ressler, R., Hurrish, G., Bechard, R., Colrue, C.
 Bottom Row: Buchholz, B., Gosh, J., Zwick, D., Ampe, B., Boldig, J., Sault, D., Carlson, L., Cook, R.



Bottom Row: Court, N., Charlesworth, R., Wallner, D., Roseth, M., Rozak, M., Welk, L., Conover, K., Brody, C.
 Middle Row: Kopp, G., Morgan, F., Miller, J., Schumacher, H., Olsen, T., Hackbart, R., Ortlieb, M.
 Top Row: Steffen, H., Volkman, B., Shor, C., Silverman, D., Krumm, J., Holding, D., Ebnetter, F., Amyx, G.



Bottom Row: Lebrick, M., Newby, Y., Cram, L., Marros, K., Breymann, L., Weber, L., Bartelt, M.,
 Weatherway, F.
 Middle Row: Uthagrove, F., Marguard, R., Ellicson, D., Williams, J., Stueber, J., Kardach, G., Martin, R.
 Top Row: Netzel, R., Snyder, R., Elks, W., Thompson, L., Sodersten, G., Walczak, B., Schweinler, B., DuFour, E.



Bottom Row: Huettl, B., Curran, J., Boigt, R., Smith, M., Fuller, J., Kopperud, K., Bauer, B., Schmitt, M.
 Middle Row: Stertz, L., Hackel, N., Gage, B., Kmiotek, E., Rickfort, P., Martens, R.
 Top Row: Mrochek, J., Butler, G., Oleson, R., Bochbeuger, C., Teetzen, W., Votava, C., Habeck, R., Burant, W.

Sophomores

The sophomores started the year eagerly, being one step ahead of their freshman class brothers. They elected for their officers Bob Paulson, president; Gene Paulson, vice-president; Jim Mulady, secretary; and Fred Schadewald, treasurer. The students had become acquainted the year before with the numerous activities offered, and immediately found themselves joining in the swirl of social activities and school functions.



Bottom Row: Tallmadge, R., Kubisiak, S., Allen, D., Schilling, M., Kuhnke, D., Williams, J., Ferdon, J.
 Middle Row: Zarda, E., Redmond, A., Sonnenberg, S., Miller, D., Pipe, C., Farris, E.
 Top Row: Zick, W., Bacon, G., Zurawski, L., Schommer, M., Ackerman, T., Bohler, W.



Bottom Row: Hanson, B., Crook, B., Lane, J., Benson, M., Diver, J., Reznicek, M., Reineking, E.
 Middle Row: Figel, M., Bosacki, L., Hanneman, R., Jacobsen, E., Langton, J., Schumaker, J.,
 Greaton, W., Cuff, J.
 Top Row: Baerenwald, J., Tanner, D., Anderson, R., Fresley, J., Ellingson, S., Plank, E., Wenzel, E.,
 Ross, D.



Bottom Row: Todd, D., Timler, V., Wilder, H., Rothamer, J., Wade, R., Anunson, G., Piatt, J.
 Middle Row: Sazama, M., Moe, C., Edmund, C., Wagner, M., Aronson, C., Baumer, M., Panke, M.
 Top Row: Mulady, J., Boettcher, J., Moen, B., Anderson, J., Cook, W., Behrendt, J., Schadewald, F.



Bottom Row: Welniak, A., Polivka, B., Payne, S., Paulson, R., Paulson, G., Johnson, D., Weisen, P., Rulseh, M.
 Middle Row: Luedke, D., Corliss, C., Thompson, D., Schultz, V., Piehl, J., Jersey, J., Roshak, M.
 Top Row: Conway, W., Reinholdt, R., Dineen, D., Rindfleieh, D., Meyer, R., Endle, W., Blaies, D., Wilde, D.



Bottom Row: Buhrdorf, J., Sutton, S., Schmidt, N., Haas, E., Christoffersen, R., Rickel, P., Extrom, D.
 Middle Row: Hurrish, D., Wolfe, W., McIntee, R., Broten, P., Buggs, M., Ullsperger, R., Kohls, B.
 Top Row: Hermann, D., Hedquist, E., Trotier, K., Turner, G., Miller, B., Stadler, D.

Juniors

The Juniors with three-fourths of their college days behind them enter their last year at Central State College. Members of the class have been busy participating in many of the extra-curricular activities. The highlight of the year was the prom. The juniors, aided by their advisers, Miss Bainter and Mr. Crow, were determined to make it a bang-up affair. King Jack Popeck led his queen in the grand march while the other officers Marlyn Gilbert, vice-president; John Sandberg, secretary; Bill Clayton, treasurer and their dates followed.



Bottom Row: Thompson, D., Malchow, N., Barrett, P., Imig, C., Czerniewski, J., Tauchen, A.
 Middle Row: Francis, D., Long, A., Payne, F., Weisbrot, B., Thomas, W., Mallow, J.
 Top Row: Wilson, L., McNamara, B., Jacobus, R., Behrendt, J., Schrank, J., DeGuire, F.



Bottom Row: Kearns, R., Sarbacker, J., Leitner, M., Stankevich, K., Allen, K., Hofman, Y.
 Middle Row: Mlada, M., Lund, M., Abrahamson, S., Piffner, M., Rothman, D.
 Top Row: Smith, S., Luhm, J., Gruling, R., Salvin, T., Reda, F., Drechsler, H.



Bottom Row: Nelson, B., Mueller, B., Moll, J., Goman, L., Pautz, N., Isberner, H., Zastrow, M., Pierre, W.
 Middle Row: Miester, A., Jarnick, P., Bauer, E., Clark, G., Summers, J., Schaefer, V., Derge, P.
 Top Row: Dahm, D., Parkin, A., Kussman, R., Facklan, E., Sandberg, J., Heuer, E., Polzin, J., Teetzen, R.



Bottom Row: Kampenga, A., Elsen, A., Gruen, J., Brittnacher, M., Lemiesz, P., Tate, S., Gossage, M.
 Middle Row: Shelley, A., Wysocki, J., Bauman, B., Leahy, K., Connor, S., Roaths, A., Ziebarth, B., Koehn, K.
 Top Row: Vissers, D., Mayer, D., Larzelere, H., Wiersma, W., Papke, R., Clayton, W., Gilbert, M.



Bottom Row: Fox, P., Fischer, V., Schmeekle, W., Fieting, R., Curtis, E., Hartleb, M., Newhall, D.
 Middle Row: Popeck, J., Morgan, D., Sommers, R., Eves, P., Douglas, K., Hoffman, F., Glasel, L., Way, W.
 Top Row: Andrews, O., Lund, T., Bruha, D., Bruha, J., Jansen, R., Kristianson, B., Drew, D.

To the Seniors

I think the theme of this yearbook "Looking Forward" is an unusually appropriate one. The world is sorely in need of citizens who have an interest in looking forward, and who also have some capacity to do it with a fair degree of success. Many problems, whether they pertain to the individual, the community, the nation or the world, would not now be confronting us if there had been an attempt at planning for the future by individuals or groups who have preceded us by a generation or a hundred years. As a student of Central State College, you are familiar with one of the important difficulties which confronts this college, in order that it may enjoy a normal physical expansion during the next 25 or 50 years, or more. The most serious difficulty is one of space. Even as recently as 40 or 50 years ago those responsible for the college could not envision the need for additional space on which this college could expand its physical plant. At that time it would have been a very simple and inexpensive matter to provide adequate land for that purpose contiguous to the present campus. It can serve as an important lesson to us as individuals.

Many of us neglect to do adequate long time planning concerning our own opportunities or our own life work. Too many decisions are based on the exigencies of the moment. We decide to do what is easiest and most convenient at the time without too much regard for the ultimate consequences of such decisions. It is easier and more pleasant to look back at the road over which we have come and to gloat over the laurels we have won, than it is to make careful plans for the future and to provide the energy necessary to carry them out. True! We may frequently be compelled to revise our plans in accordance with the obstacles which beset our path, but the results are likely to be more satisfactory if we have a plan than if we are wandering aimlessly about. I wish to commend to each of you the value of looking forward in your own life and to lay your course on the basis of the best information you have and which you may obtain from others in whom you have high confidence.

Wm. C. Hansen
President
4/8/52

You are now leaving the ivied walls of your Alma Mater and joining that ever increasing number of her alumni. During the two, three or four years you have spent on her campus you have met your responsibilities well, looked to the future with eager enthusiasm, and learned something of her past through the traditions which have grown up since she first opened her doors to a little band of pioneers in 1894. You have developed four square "by looking backward, looking forward, and looking around".

Central State trusts you have learned that you cannot make a good judgment today for tomorrow unless you know something about yesterday. She bids you ever to remember "that the present has its roots in the past and that the future is being made today. Today is only yesterday repeated and tomorrow is today all over again".

Good-bye and God bless you.

May M. Roach



An exciting year has just passed but for the Seniors this has been the most wonderful of all, for they, as Seniors took part in plans for the Senior Ball and Graduation. The guiding officers, pictured above, are Gordon Fairbert, president; Don Olsen, vice president; Jeanette Holm, secretary; and Russell Roberts, treasurer.



ABNEY, IRA

Crandon

Major: Intermediate. Men's Glee Club, Round Table.



BEA, BARBARA

Stevens Point

Major: Primary. Minor: Art. Tau Gamma Beta, Iris, Trigon, W.A.A., Primary Council, Cheerleader, Alpha Psi Omega.



BEAWER, IRENE

Colby

Major: Intermediate. Pointer, Wesley, Round Table.



**PETRICK, JACQUELINE,
BENJAMIN**

Bancroft

Major: Intermediate. Round Table, Newman Club.



BLIESE, DAVID

Wausau

Major: Intermediate and Upper Elementary. Minor: Geography. Round Table, Gamma Delta, Men's Glee Club, F.T.A., Intramurals, Radio Workshop, S Club, Football.



BOOTE, ROSEMARY

Rhineland

Major: Primary. Primary Council, Psi Beta Psi, Pointer, Girls' Glee Club, Mixed Chorus.



BORCHARDT, LEROY

Waupaca
Secondary; Major: Chemistry.
Minors: Physics, Mathematics.
Forum, Sigma Zeta.



BRUNNER LETITIA

Leopolis
Major: Primary. Primary Council,
Y.W.C.A., W.R.A., Interfaith
Council, Mixed Chorus, Pan
Hellenic Council, Omega Mu Chi,
Newman Club, Student Council.



BRUNSMAN, WALTER

Berlin
Major: Intermediate and Upper
Elementary. Minors: History,
Geography, English. Round
Table, Phi Sigma Epsilon, New-
man Club, S Club, Intramurals,
Football.



BUTLER, DAVID

Stevens Point
Letters and Science; Major:
Mathematics, Biology. Minor:
Chemistry. Sigma Theta Epsilon,
Intramurals, Wesley, Rifle Club.



BUTTKER, RONALD

Stevens Point
Major: Intermediate. Student
Council, Gamma Delta, Round
Table.



BUTTKER, LOIS

Wausau
Major: Primary. Primary Council,
Gamma Delta, Mixed Chorus.



CABLE, WILLIAM

Stevens Point
Secondary; Major: Mathematics.
Minors: Physics, History. Chi
Delta Rho, Alpha Psi Omega,
Forum, Student Council, Pan
Hellenic Council, Jr. Academy
of Science, Stage Manager.



CACIC, WALTER

Montello
Major: Intermediate and Upper
Elementary. Phi Sigma Epsilon,
Newman Club, F.T.A., Round
Table.



CARPENTER, HUGO

Stevens Point
Major: Intermediate and Upper
Elementary. Band, Newman
Club, Y.G.O.P.



CATTANACH, JOHN

Owen
Letters and Science; Major:
History. Minors: Geography,
Psychology. Alpha Gamma, In-
ternational Relations Club, Can-
terbury, Radio Round Table,
Y.G.O.P.



CENSKY, OSCAR

Tigerton
Major: Intermediate. Round
Table.



CHICK, GILBERT

Stevens Point
Letters and Science; Major:
Mathematics. Phi Sigma Epsilon,
Bowling.



COLLUM, GERTRUDE

Wild Rose
Secondary; Major: Home Economics. Minors: Physical Education, Biology. Wesley, Home Economics Club, W.R.A.



CONACHEN, WILLIAM

Antigo
Secondary; Major: General Science. Minors: History, English. S Club, Intramurals, Forum, Basketball.



CRAIG, JEANETTE

Manawa
Letters and Science; Major: Biology. Minor: History. Band, Trigon, Pointer, College Theater, Y.G.O.P.



CROSBY, MARJORIE

Stevens Point
Major: Intermediate. Minor: Art. Round Table, Omega Mu Chi.



CUDNOHUFSKY, GEORGE

Pound
Secondary; Major: Geography. Minors: Physical Education, Biology, English. Track, Mixed Chorus, Intramurals.



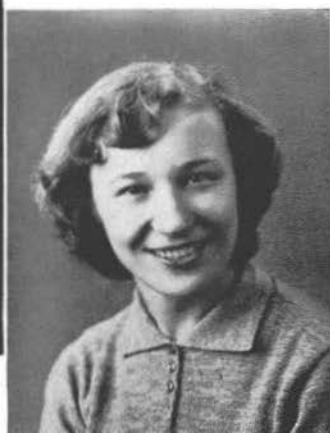
DALLMAN, CLARENCE

Stevens Point
Major: Intermediate and Upper Elementary. Minor: History. Newman Club, Round Table, Alpha Kappa Lambda, Intramurals, F.T.A.



DEHLINGER, BERNICE

Stevens Point
Major: Primary. Minor: Art.
Primary Council, Radio Workshop, Dramatics, Tau Gamma Beta, Alpha Psi Omega, Newman Club.



DOMACK, ANITA

Stevens Point
Letters and Science; Major: English. Minors: Speech, History. Radio Workshop, Newman Club, College Theatre.



DOUGLAS, DONALD

Wittenberg
Major: Upper Elementary. Minor: Music. Round Table, Wesley, Band, Mixed Chorus, Men's Glee Club, Radio Workshop, Intramurals, Dramatics, Boy Scout Leadership, College Theatre.



DOUVILLE, MARY

Wausau
Major: Primary. Minor: History. Tau Gamma Beta, Newman Club, Primary Council, Iris, Student Council, Dorm Council, Pan Hellenic Council, Mixed Chorus, W.S.G.A. Board.



ELMER, LILA

Brooklyn
Major: Primary. Tau Gamma Beta, Y.W.C.A., Dorm Secretary, Primary Council.



FAIRBERT, GORDON

Pittsville
Major: Intermediate and Upper Elementary. Round Table, Chi Delta Rho, Gamma Delta, Men's Glee Club, Mixed Chorus, Junior Class Treasurer, Senior Class President, Track, Intramurals.



FEHRENBACH, JOAN

Marshfield
Major: Primary. Primary Council, Girls' Glee Club, Mixed Chorus, Newman Club, Alpha Kappa Rho, Omega Mu Chi, Pan Hellenic Council, Intersorority Council.



FINK, THORA

Marshfield
Major: Primary. Primary Council, Trigon, Pointer, Mixed Chorus, Girls' Glee Club, Y.W.C.A.



FIRKUS, ALICE, DAMBECK

Stevens Point
Major: Intermediate and Upper Elementary. Rural Life, Round Table, Newman Club, Girls' Glee Club, Dramatics, F.T.A.



FONTAINE, RETA

Mosinee
Major: Primary. Wesley, Y.W.C.A., Primary Council, Dorm Council.



FRANCIS, RICHARD

Merrill
Secondary; Major: English. Minors: Speech, History. Iris, Pointer, Forum, Alpha Psi Omega, Sigma Tau Delta, Photographer.



FRITSCH, JAMES

Spencer
Major: Intermediate and Upper Elementary. Round Table, Newman Club, Y.G.O.P.



GILBERT, ROBERT

Hancock

Letters and Science; Majors: Conservation, Biology. Track, Men's Glee Club, Alpha Kappa Lambda, Wesley, Intramurals.



GILBERTSON, CAROLE

Stevens Point

Secondary; Major: Home Economics. Minors: General Science, English. Cheerleader, W.R.A., Forum, Wesley, Home Economics Club.



GOEBEL, NANCIE

Antigo

Major: Primary. Omega Mu Chi, Iris, Pointer, Alpha Kappa Rho, Primary Council, Dorm Council, Mixed Chorus, Girls' Glee Club, Newman Club, Radio Workshop, Dramatics, W.S.G.A. Board.



HANSEN, MARTIN

Merrill

Secondary; Major: Conservation. Minors: Geography, Biology. Sigma Zeta, Alpha Kappa Lambda.



HARRISON, JACK

Madison

Major: Intermediate and Upper Elementary. Round Table.



HEISER, LEROY

Vesper

Major: Intermediate and Upper Elementary. Round Table, F.T.A., Gamma Delta, Men's Glee Club.



HELD, MURIEL

Stevens Point
Secondary; Major: Home Economics. Minors: Music, General Science. Alpha Kappa Rho, Omega Mu Chi, Home Economics Club, Forum, Mixed Chorus, Girls' Glee Club, Wesley, Inter-
sorority Council.



HIRZY, FERDINAND

Stevens Point
Secondary; Major: History. Minors: Geography, English. Phi Sigma Epsilon, Newman Club, International Relation Club, Y.G.O.P., Radio Round Table.



HIRZY, ILSE

Stevens Point
Major: Primary. Primary Council, Iris, Newman Club.



HOLM, JEANETTE

Tigerton
Secondary; Major: Chemistry. Minors: Mathematics, Biology. Tau Gamma Beta, Forum, L.S.A., Y.W.C.A., Sigma Zeta, Dorm Council, Senior Class Secretary.



HOLSTEIN, GRETCHEN

Stevens Point
Secondary; Majors: English, Chemistry. Minor: French. Omega Mu Chi, Sigma Tau Delta, Sigma Zeta, Forum, Dramatics, Student Council, Wesley, Mixed Chorus, Girls' Glee Club, Radio Workshop, Pointer Assistant Editor.



JACOBOSKI, LOUIS

Stevens Point
Major: Intermediate and Upper Elementary. Student Council, Men's Glee Club, Radio Workshop, Mixed Chorus, College Theatre, Alpha Psi Omega, Phi Sigma Epsilon, Intramurals, Track, Newman Club, Young Democrats, Round Table, Homecoming Chairman.



JELINEK, JERRY

Schofield

Secondary; Majors: Conservation, Biology. Minors: Physical Education. Chi Delta Rho, Alpha Kappa Lambda, Newman Club, Intramurals, S Club, Football All Conference, Track, Wrestling, Pointer.



JENSEN, DORIS

Stevens Point

Major: Primary. Primary Council, Mixed Chorus.



JENSEN, GORDON

Waupaca

Letters and Science; Major: Conservation. Minor: History.



JOHNSON, ROBERT

Stoughton

Secondary; Major: Conservation. Minors: Physical Education, Biology. Chi Delta Rho, Alpha Kappa Lambda, Forum, S Club, Tennis, Intramurals.



JONES, MARGARET

Wild Rose

Secondary; Major: Home Economics. Minors: English, General Science. Home Economics Club, Iris, Wesley, Tau Gamma Beta, Sigma Tau Delta, Y.W.C.A., W.R.A.



JOSWIAK, JOHN

Marathon

Letters and Science; Major: Conservation. Minors: Mathematics, Physical Education. Alpha Kappa Lambda, S Club, Football.



KNOPE, MARILYN

Stevens Point
Secondary; Major: Home Economics. Minors: Biology, History. Omega Mu Chi, Home Economics Club, Newman Club.



KORTH, MARILYN

Neillsville
Major: Primary. Primary Council, Mixed Chorus, Gamma Delta, Pointer.



KRELL, LOLITA

Woodruff
Major: Intermediate. Omega Mu Chi, Round Table, F.T.A., Mixed Chorus, Newman Club, Dorm Treasurer.



KULICK, KEN

Stevens Point
Major: Intermediate. Round Table, S Club, Football, Assistant Coach, Men's Glee Club.



KUMBIER, HOWARD

Colby
Major: Upper Elementary. Phi Sigma Epsilon, Round Table.



**QUERAM, MOLLY
LAMPERT**

Stevens Point
Major: Primary. Mixed Chorus, Girls' Glee Club, Primary Council, Trigon.



LAWRIE, MARJORIE

Marshfield

Major: Primary. Psi Beta Psi, Wesley, Trigon, Pointer, Mixed Chorus, Girls' Glee Club, Primary Council, Intersorority Council, Y.W.C.A., Interfaith Council.



LONG, AL

Sayner

Secondary; Majors: Mathematics, Geography. Minor: History. Chi Delta Rho, Iris, Alpha Gamma, Sigma Zeta, Forum, Wesley, Student Council, Y.G.O.P., Pan Hellenic Council.



LUHM, JAMES

Wautoma

Major: Intermediate. Round Table, Men's Glee Club, Mixed Chorus, S Club, Track.



MARCH, PETER

Dancy

Secondary; Major: General Science. Minors: Physical Education, Mathematics. Track, Forum.



MARSHEL, ROBERT

Dancy

Conservation.



MATZKE, ERWIN

Sturgeon Bay

Major: Intermediate and Upper Elementary. Men's Glee Club, Round Table, Mixed Chorus, Dramatics.



MAYER, MARVIN

Junction City
Major: Intermediate and Upper Elementary. Round Table, Phi Sigma Epsilon, F.T.A., Intramurals, Pointer.



MAYER, NORMA

Junction City
Major: Intermediate. Iris Editor, Pointer, Tau Gamma Beta, Mixed Chorus, Gamma Delta, Round Table, W.S.G.A. Board, Dorm Head Manager.



MILLER, MARY

Mason
Major: Intermediate and Upper Elementary. Minors: Geography, History. Newman Club, F.T.A., Round Table, College Theatre.



MOORE, EVERETT

Plover
Secondary; Major: English. Sigma Tau Delta, Pointer, Iris, Phi Sigma Epsilon.



NAGY, PAUL

Stevens Point
Letters and Science; Major: History. Radio Round Table, Alpha Gamma, Y.G.O.P.



NIKOLAI, THOMAS

Marshfield
Letters and Science; Major: Chemistry. Minors: Mathematics, Biology. Sigma Zeta, Y.G.O.P., Track, Newman Club.



O'BRIEN, PATRICK

Stevens Point

Major: Intermediate and Upper Elementary. Painter Business Manager, Track, Men's Glee Club, Round Table, Phi Sigma Epsilon, F.T.A., Pan Hellenic Council, Newman Club, Intramurals.



OLSEN, DONALD

Wittenberg

Secondary; Major: History. Minors: Geography, Spanish. Chi Delta Rho, Alpha Gamma, Forum, Student Council, Wesley, Men's Glee Club, S Club, Track, Dramatics, Senior Class Vice President, Intramurals.



O'NEILL, DOROTHY

Milwaukee

Major: Primary. Tau Gamma Beta, Girls' Glee Club, Primary Council, L.S.A., W.S.G.A. Board.



PETERSEN, MARY ANN

Waupaca

Major: Primary. Omega Mu Chi, W.S.G.A., Mixed Chorus, W.R.A., Y.W.C.A., Dorm Council, Primary Council.



PHELAN, ANN

Stevens Point

Secondary; Major: Home Economics. Minors: Biology, English. Newman Club, Forum, Omega Mu Chi, Home Economics Club.



PIEKARSKI, MICHAEL

Junction City

Major: Intermediate and Upper Elementary.



RATA CZAK, DOLORES

Milwaukee

Secondary; Major: Home Economics. Minors: Chemistry, English. Home Economics Club, Wesley.



POLKA, CHET

Mosinee

Secondary; Major: Geography. Minors: Biology, Physical Education. Basketball, Men's Glee Club, Alpha Gamma, "S" Club, Junior Class President, Forum, Track, Newman Club.



POLZIN, EUGENE

Plainfield

Major: Intermediate and Upper Elementary. Round Table, Track, Phi Sigma Epsilon, Men's Glee Club, Basketball.



RATA CZAK, DOLORES

Sturgeon Bay

Major: Intermediate. Pointer, Newman Club, Round Table, Radio Workshop, Great Books.



RAVEY, PHYLLIS

Waupaca

Major: Primary. Primary Council.



REBELLA DOROTHIANNE

Mellen

Secondary; Major: English. Minors: Speech, History. Tau Gamma Beta, Cheerleader, Alpha Psi Omega, Sigma Tau Delta, Pointer, Band Majorette, College Theatre.



RICHETTO, EMIL

Wausau
Secondary; Major: Conservation,
Biology. Minor: Chemistry. Alpha
Kappa Lambda, Men's Glee
Club, Wayland, Inter-Faith Coun-
cil.



RINGSTAD, ELIZABETH

Stratford
Major: Primary. Radio Work-
shop, Primary Council, F.T.A.



RINGSTAD, LEONARD

Wittenberg
Major: Intermediate and Upper
Elementary. Radio Workshop,
Round Table, Student Council,
College Theatre, Cheerleader,
F.T.A.



ROBERTS, RUSSELL

Ogema
Secondary; Major: Chemistry.
Minors: Physics, Mathematics.
Senior Class Treasurer, Newman
Club, Chi Delta Rho.



ROBERTSON, JEAN

Stevens Point
Major: Primary. Omega Mu Chi,
Alpha Psi Omega, Primary Coun-
cil, Iris, W.S.G.A., Radio Work-
shop.



ROSETH, JOHN

Stevens Point
Letters and Science; Major: Geo-
graphy. Minors: History, Psy-
chology. Football, Track, Intra-
mural Sports.



SAMELSTAD, WALTER

Park Falls
Secondary; Major: Geography.
Minors: History, Mathematics.
Forum, Football, Basketball, "S"
Club, Alpha Gamma.



SANNES, NANCY

Scandinavia
Secondary; Major: History. Mi-
nor: Biology, Social Science.
Alpha Gamma, Iris, Omega Mu
Chi, Pan Hellenic Council, Inter-
sorority Council, Mixed Chorus,
Forum.



SCHMIDLER, FRANK

Port Washington
Letters and Science; Major: Bio-
logy, Conservation. Phi Sigma
Epsilon, Pan Hellenic Council,
Alpha Kappa Lambda, Intra-
mural Sports.



SCHROEDER, COLLEEN

Antigo
Secondary; Major: Home Eco-
nomics. Minors: English, Science.
Home Economics Club, Y.W.C.A.,
Newman.



SKOWRONSKI PATRICIA

Stevens Point
Secondary; Major: English. Mi-
nor: Biology, Speech. Painter,
Newman Club, Radio Workshop,
Sigma Tau Delta, College Thea-
ter.



SORENSEN, GORDON

Plainfield
Major: Intermediate and Upper
Elementary. Round Table, Junior
Class Vice President, Student
Council, Wesley, Men's Glee
Club, Cheerleader, Dramatics,
Inter Faith Council, Band.



SWANKE, SUZANNE

Clintonville

Secondary; Major: English. Minors: Speech, History. Alpha Kappa Rho, Sigma Tau Delta, Omega Mu Chi, Iris Assistant Editor, Pointer, Pan Hellenic Council, Inter-Sorority Council, W.S.G.A., Forum, Mixed Chorus, Radio Workshop, Girls' Glee Club, Newman Club.



THIRKILL, MARGARET

Wisconsin Rapids

Major: Primary. Primary Council, Wesley, Mixed Chorus, W.S.G.A., W.R.A., Pointer, Girls' Glee Club.



TIBBETTS, BEVERLY

Antigo

Major: Intermediate. Mixed Chorus, Iris, Omega Mu Chi, Pan Hellenic Council, Inter-Sorority Council, Y.W.C.A., W.S.G.A., Round Table.



TURZENSKI, RICHARD

Stevens Point

Major: Intermediate and Upper Elementary. Phi Sigma Epsilon, Intramural Sports, Newman Club, F.T.A., Round Table, Pointer.



WAGNER, WILLIAM

Marshfield

Secondary; Major: Mathematics. Minors: Chemistry, Physical Education. Basketball, "S" Club, Sophomore Vice President.



WEST, JOYCE

Dalton

Major: Primary. Girls' Glee Club, Mixed Chorus, Primary Council, Newman Club.



ZEMAN, LORRAINE

Phillips
Major: Primary. Radio Work-
shop, Primary Council.



ZIMMERMAN, IDELLA

Portage
Major: Primary. Primary Council,
Mixed Chorus, Girl's Glee Club.



ZIMMERMAN, KARL

Wausau
Major: Intermediate and Upper
Elementary. Minors: Science,
Mathematics, English, History.
Round Table.



BYRNE, RAMONA

Antigo
Secondary; Majors: History, Eng-
lish. Minor: Social Science. Tau
Gamma Beta, Y.G.O.P., Alpha
Gamma, Sigma Tau Delta, Iris,
Dorm Council, Forum, Newman
Club.



HELGERSON, DONALD

Iola
Secondary;
Major: Conservation. Minors:
Biology, History. Alpha Kappa
Lambda, Forum.



BARLOW, PATRICIA
Stevens Point
Major: Rural.



BERTZ, COLLEEN
Loyal
Major: Rural. Rural Life, New-
man Club.



BONESKE, RAY
Lac du Flambeau
Major: Rural. Rural Life, Mixed
Chorus, Intramural Sports.



CAMPBELL, MARY
Waupaca
Major: Rural. Rural Life, Mixed
Chorus, L.S.A.



CHECK, JOHN
Rosholt
Major: Rural. Radio Work Shop,
Rural Life, Intramural Sports.



CURRY, NANCY
Adams
Major: Rural. Rural Life, Mixed
Chorus, Inter-Faith Council, W.
S.G.A., Wesley.



FERDON, JEAN

Stevens Point
Major: Rural. Gamma Delta,
Rural Life, Omega Mu Chi,
Freshman Class Secretary, Girls'
Glee Club.



GERBER, FRANCES

Adams
Major: Rural. Rural Life, Radio
Workshop, Pointer, Girls' Glee
Club, Mixed Chorus, Newman
Club, College Theater.



HAAS, ELLA

Colby
Major: Rural. Rural Life, Gam-
ma Delta.



HOLDING, PATRICIA

Oneida
Major: Rural. Band, Rural Life,
Wesley, Y.W.C.A.



KLINNER, LORNA

Wittenberg
Major: Rural. Rural Life, L.S.A.



LOVDAHL, LILLIAN

Iola
Major: Rural. Gamma Delta,
Iris, Rural Life, Radio Workshop,
Great Books, Psi Beta Psi,
Student Council, Dramatics,



LEMIESZ, PHYLLIS

Ripon
Major: Rural. Mixed Chorus,
Rural Life, Newman Club.



MARCHEL, JEAN

Stevens Point
Major: Rural. Band, Rural Life.



McGOFF, BETTY

Summit Lake
Major: Rural. Rural Life, Girls'
Glee Club, Newman Club, Mixed
Chorus, Band, Student Council.



MELZER, YVONNE

Clintonville
Major: Rural. Gamma Delta,
Rural Life.



MEWS, JEAN

Waupun
Major: Rural. Rural Life, Gam-
ma Delta, Mixed Chorus.



MEWS, JOAN

Waupun
Major: Rural. Rural Life, Gam-
ma Delta, Mixed Chorus.



NOAH, BERNELDA

Greenwood

Major: Rural. Rural Life, Girls' Glee Club, Mixed Chorus, Home Economics Club, Trigon.



NULTY, HELEN

Waupaca

Major: Rural. Tau Gamma Beta, Primary Council, Rural Life, W.R.A., Newman Club.



OLSON, GERALDINE

Stevens Point

Major: Rural. Rural Life, Newman Club.



PIPE, CARLA

Amherst

Major: Rural. Rural Life, Wesley.



RACZEK, CAMILLE

Knowlton

Major: Rural. Rural Life.



REDMOND, ALICE

Tomahawk

Major: Rural. Rural Life, Newman Club.



RUCINSKI, PHILIP

Stevens Point
Major: Rural. Rural Life, Newman Club.



STASHEK, AGNES

Milladore
Major: Rural. Newman Club, Rural Life, Mixed Chorus, Girls' Glee Club.



TAYLOR, BARBARA

Scandinavia
Major: Rural. Rural Life, Omega Mu Chi, Radio Workshop.



TISCHENDORF, JANIS

Colby
Major: Rural. Rural Life, Gamma Delta.



TOMFAHRDE, MARGARET, THORPE

Auburndale
Major: Rural. Rural Life, Gamma Delta, Girls' Glee Club, Dorm Council, Y.W.C.A.



WALLNER, LAURETTA

Plainfield
Major: Rural. Primary Council, Rural Life, W.A.A., Wesley.



WANKE, JOANN

Stevens Point
Major: Rural. Omega Mu Chi,
Radio Workshop, Rural Life,
Newman Club.



WILLIAMS, JOAN

Bowler
Major: Rural. Rural Life, Girls'
Glee Club, Gamma Delta,
W.S.G.A., W.R.A.



HAGER, BARBARA

Fenwood
Major: Rural. Gamma Delta,
Rural Life, Y.G.O.P.

Seniors Without Pictures

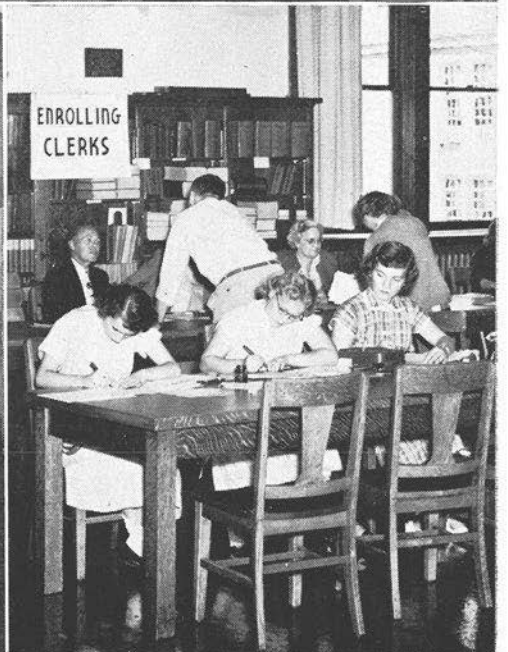
Case, David
Curry, James
Erickson, Iver
Floistad, Alvina
Fochs, John
Goman, Loraine
Guenther, Rona
Hansen, Margaret
Kalka, Harriet
Ketchum, Helen
Lecy, Raymond
Mason, Lois
Price, Blanche
Queram, Norman
Werner, Fern
Wright, Clayton

We Look Around . . .





Many days have come and gone, but we will always remember the fun we had at school functions, such as; The Sadie Hawkins Dance, where the Co-ed claimed the man of her heart; the Woodchopper's Ball, where the lumbering A K L man made his appearance. In the picture above, Mary Ann Smith has the situation well in hand, but Li'l Abner, Bill Cook may still be looking for a way out. For other activities, turn the page.



The First Daze . . . Registration

Farewell to free time . . . Cheerful earful from Dr. Tolo . . . The last round up.



The Faculty Reception

Bird's eye view of the faculty . . . A pause for refreshments . . . Laughs and chuckles from Miss Roach.



Bottom Row: Shaefer, Schroeder, Leahy, Pfiffner, Moll, Sonnenberg, Rickel.
 Top Row: Bloczynski, Cuff, Benson, Abrahamson, Clayton, J., Jarnich, Brittnacher, Schlottman,

Student Government



Bottom Row: Hodgdon, Schumacher, Cable, Long, Mr. Trytten
 Top Row: Jacobsen, Gilbert, Olsen, Zingler



Welcome, Felisa Borja

Friends from Guam



Winter — Guam



Winter — Wisconsin



Como se dice?

and South America



Home Folks. Violeta Colina and Bertha Rodriguez greet Senor Mendoza, Minister of Education, Peru.



The "Great American Man" fashioned by the señoritas.

HOMECOMING



The Coronation . . . Mutual Admiration Society — Chairman Flint congratulating M.C. Lund . . . Votes for the Queen . . . The three lovelies . . . Hobos on parade.



The traditional tinder . . . Milwaukee Gull's greeting . . . Homecoming Hoe down . . . Milwaukee's tender treatment . . . More Hoe down . . . Grand Old Players . . . Taking the cake . . . Alums dining with the Queen and her court.



CSC musical troopers . . . On the rocks . . . Ding, Dong, Bell, Gulls are in the well . . . Homecoming floats and more floats.



Cheerleaders, 51-52: Marge Smith, Rita Martens, Dorothy Gilbertson, Peggy Figel . . . Welcome to Girls' Dorm . . . Mr. Michelsen's pep rally . . . Ducking the foe . . . International car . . . Cheers from Jerry, Lorna, Mary and Bill . . . The mascot.



Christmas diners, Christmas cheer.
Girl's Dorm? Has something new been added?

Nelson Hall

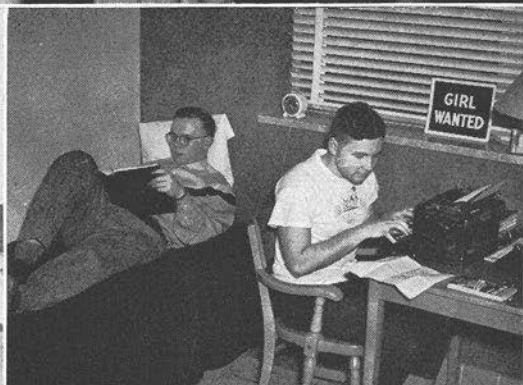
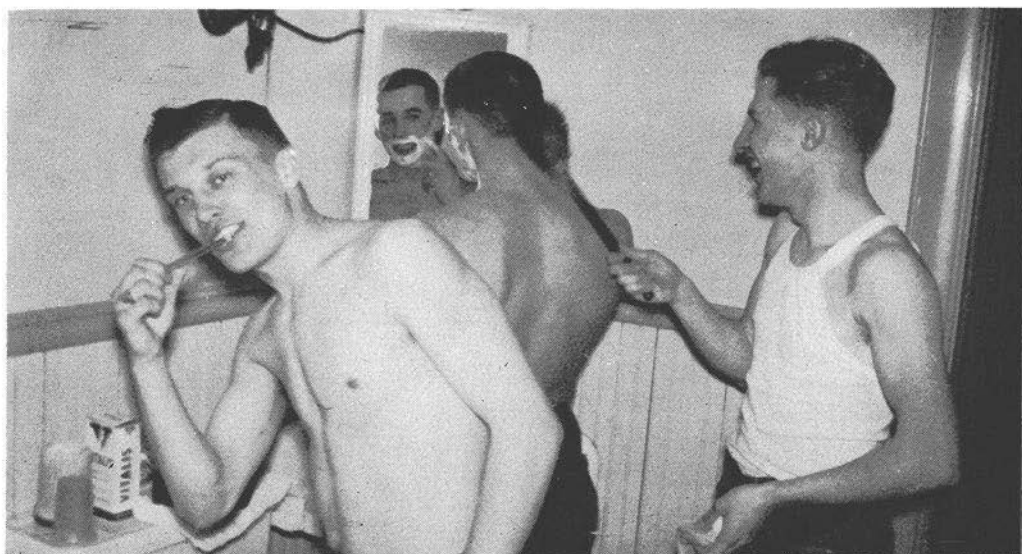


Reception Committee, Fall tea (Formal). Reception Committee, (Informal).
 Miss Elstad, Ass't Director, and Mrs. Angel, Director, Nelson Hall.
 "We'll take the cake!" Willing workers on the Homecoming float.
 "Why don't we do this more often?" Mary's Christmas — tree and stars!



"Say, Margaret, how do you break an egg?"
Daily duties, Dolores Newhall. Studious student, Sally Connor.

Rooming Houses



Bare facts of college life . . . Story hour . . . Applications accepted . . .
Recreation room . . . Dorm president's privileges.



Winter, through camera's eye

Winter through the Artist's eye . . .



In looking around among our fellow students, we have had the rare pleasure of finding a football hero, an active fullback, in the art room as well as on the athletic field. The above picture is a reproduction of a water color painting by Dave Bliese, and it is with regret that we could not also reproduce the wintery tones which were skillfully blended so that one could feel the soft quietness, typical of a first snow fall.

Music Department

One of the outstanding events of the holiday season is the Christmas concert presented by the Mixed Chorus and Girls' Glee Club under the direction of Peter J. Michelsen. The Christmas pageant directed by Miss May Roach, and the stage settings supervised by Miss Edna Carlsten all contribute to make it a memorable occasion. In addition to the Christmas concert, the glee club presents an Easter and a spring concert. The 1952 Spring Concert marked another step forward when the girls appeared for the first time in their new maroon and white robes. All these performances are indicative of the fine direction of Mr. Michelsen and the musical talents of the students.

Mixed Chorus



Row 1: Lemiesz, Fehrenbach, Goebel, Gruen, Charlesworth, Allen, Farris, Geise, Zahradka, Zimmerman, Moll, Rothman, Tibbetts, Heid, B., Boote, Pfiffner, Holstein.
Row 2: Wysocki, Lane, Lawrie, Tallmadge, Meister, Krell, Breyman, Fink, Petersen, Brunner, Leitner, Diver, Bahr.
Row 3: Noah, Raaths, Jensen, D., Elde, Michaelis, Mueller, Church, Mueller, B., Nelson, B., Barrett, Korth, Nelson, Nelson, M., Abrahamson, Douville, Hoeft.
Row 4: Jacobus, Wesley, Holmgren, Bigalke, Schweindler, Cook, Endle, Conway, Steuber, Boneske, Pautz, Thompson, Yentz, Hanson, McCauley, Swanke, Albrightson.

Glee Club



Bottom Row: Ferdon, Fehrenbach, Mlada, Goebel, Gruen, McGoff, Rezniczek, Brittnacher, Held, Boote.
 Middle Row: O'Neill, Smith, M., Farris, Tallmadge, Nelson, M., Reineking, Clayton, J., Church, House, Noah, McCauley.
 Top Row: Mueller, Ortlieb, Gerber, Zellinger, Ziebarth, Meister, Abrahamson.



Row 1: Dahms, Hackbart, Boettcher, Moen, Reed, Williams, Eves, Mr. Knutzen, De Guire, Karls, Heuer, Cook, Fairbert, Schultz, Abney.
Row 2: Anderson, Jones, P., Ross, Kohls, Matzke, Clayton, Wagner, I., Woodford, Kristianson, Schadewald, Mulady, Bruha, R., Gilbert, Timmier.
Row 3: Jacobus, Olsen, McCandless, Reda, Mayer, Ellicson, Oleson, Knutson, Papke, Cook, R., Parkin, Anderson, Schweindler.
Row 4: Heiser, Krueger, Wade, Gasch, Gruling, Robinson, Dreschler, Polka, Kussman, Purchatzke, Ellingson, Krueger, Plank, Carlson.
Pianist: Bertram Davies

Men's Glee Club



The Quartet

Gordon Fairbert, Robert Gilbert, Arlon Parkin, Don Schultz.



Girls' Glee Club

Spring of 1952 found the Girls' Glee Club blooming forth in brand new robes of maroon and white, of which all at CSC are duly proud.



Bottom Row: Fehrenbach, Goebel, Gruen, Zahradka, Collins, Leitner, McGoff, Bahr, Nelson, M., Tallmadge, Douville, Stashek, Zellinger, Hiller, Mill, Thompson, D., Boote, Piiffner.
Middle Row: Ferdon, Farriss, Wysocki, Mlada, Eide, Kabat, Colrue, Korth, Zimmerman, Church, House, Nelson, J., Abrahamson, Brizzo, Brittnacher, Weisen, Hoeft, Butts.
Top Row: McIntee, Allen, D., Lawrie, Richmond, Mueller, Nelson, B., Held, E., Schwentner, Williams, Piehl, Pautz, Reznicek, Petersen, Tibbetts, Mayer, Ziebarth, Breymann, Lehmann.
Extreme Top: Ortleib, Smith, M., Cobb, McCauley, Schilling.

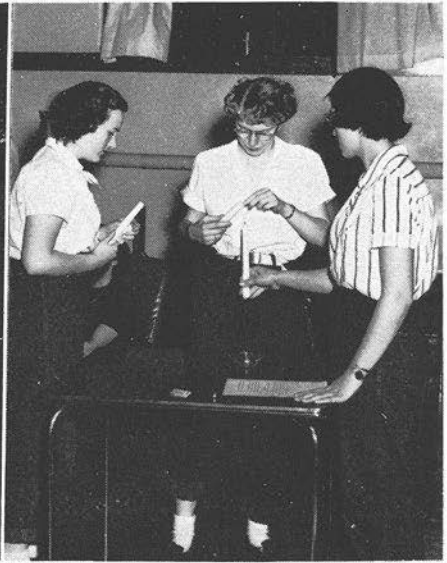


Standing: Ringstad, L., Pierre, Glasel, Mayer, D., Trotier, Cutnaw, Way, Gruling, Silverman, Sannes, Check.
Seated: Miss Hanson, Martens, Reda, Connor.

Radio Workshop . . . Driver Training

John Mallow, Mr. Specht, Al Long.





The Winnahs! Sadie Hawkins Dance
 Lil Abner (Chuck Robinson) Daisy Mae (Nancy Goebel)
 Initiation of Y Dubs. Alice Tauchen, Lois Leber, Pledges; Lila Elmer.

Bottom Row: Weber, Bartelt, Dahm, Teetzen, Schaefer.
 Middle Row: Polzin, R., Isberner, Mlada, Peterson, Jones, H., Jones, J., Crook, Cuff.
 Top Row: Miss Moser, Adviser, Elmer, Tauchen, Lawrie, Fontaine, Fink, Jacobson, Sonnenberg,
 Holding, Benson, Sutton.

Young Women's Christian Association

"Evening Song of Wisconsin"



The painting in the picture above was presented to the music room of the Training school by the artist, Mrs. Allan Thomas. "Evening Song of Wisconsin" portrays the early music groups of the state, showing the hope and joy that newcomers found in the quiet country. Children of the Training school were used as models for the painting which has brought delight to all who use the music room.

Young Republican's Club



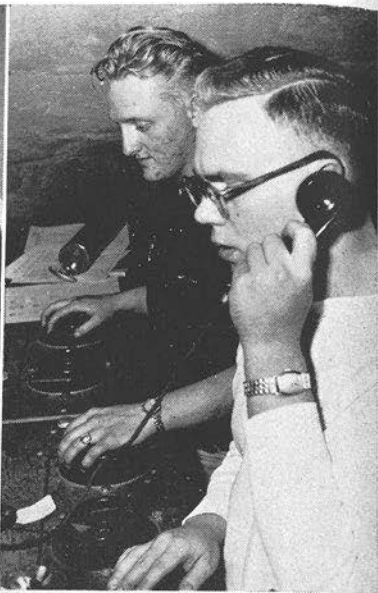
Calm candidate convincing a coed.



Bottom Row: Hirzy, F., Bosacki, Hager, Byrne, Craig, Zellinger, Farris.
Middle Row: Foster, Hoehne, Reed, Lecy, Clayton, W., Nickolai.
Top Row: Moen, Polzin, J., Klein, Curry, J., Nagy, Cattanach.



Shining Up to Kefauver



Play Directors and assistants, D. Rebella, S. Swanke, R. Francis, P. Skowronski, M. Miller, A. Domack . . . The Lamp Lighters, W. Cable, R. Papke . . . Setting the stage, D. Silverman, Miss Isaacson, W. Gage, W. Zick, S. Connors, W. Pierre, R. Gruling . . . Artists and Models, Shirley Jacobson, J. Miller, J. Suehring, H. Schumacher . . . Top man E. McCandless.

College Theater . . . The Preparations --



1. "Twelve Pound Look" Rita Martens, Mary Lund.
2. "The Man in the Bowler Hat" Eleanor Curtis, Jerry Boettcher.
3. "Trifles" J. Miller, W. Ellis, B. Tibbetts, E. Farris, H. Schumacher.

The Productions



Sharing the news at the Co-op . . .

At the Campus Cafe . . .

What a day!

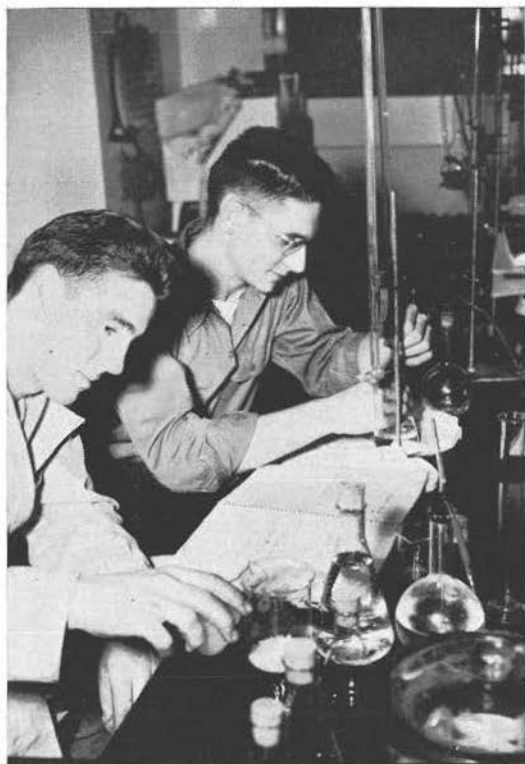




Good morning, at the Eat Shop.
Where Good Friends Meet

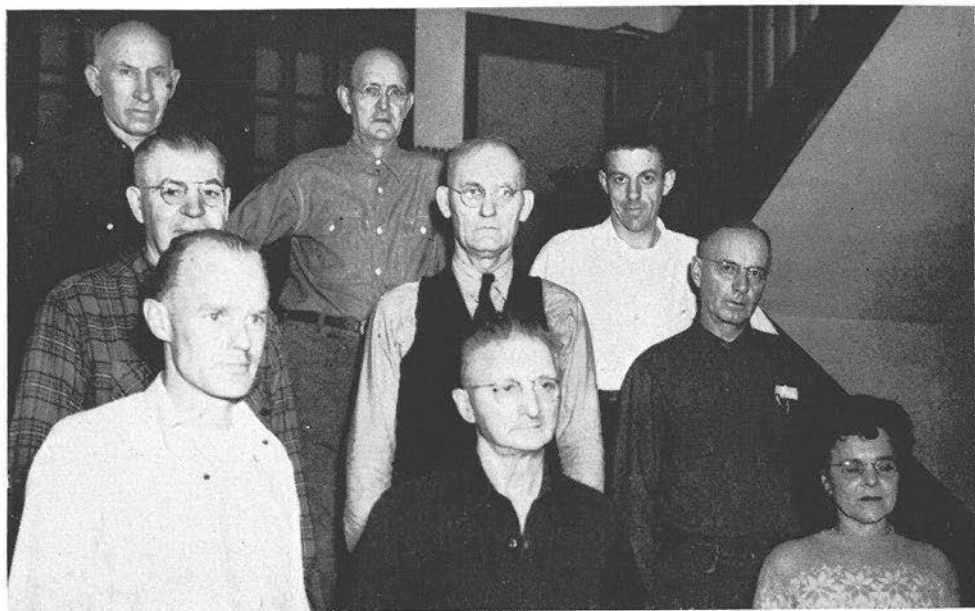


8:14 at the Campus Cafe.



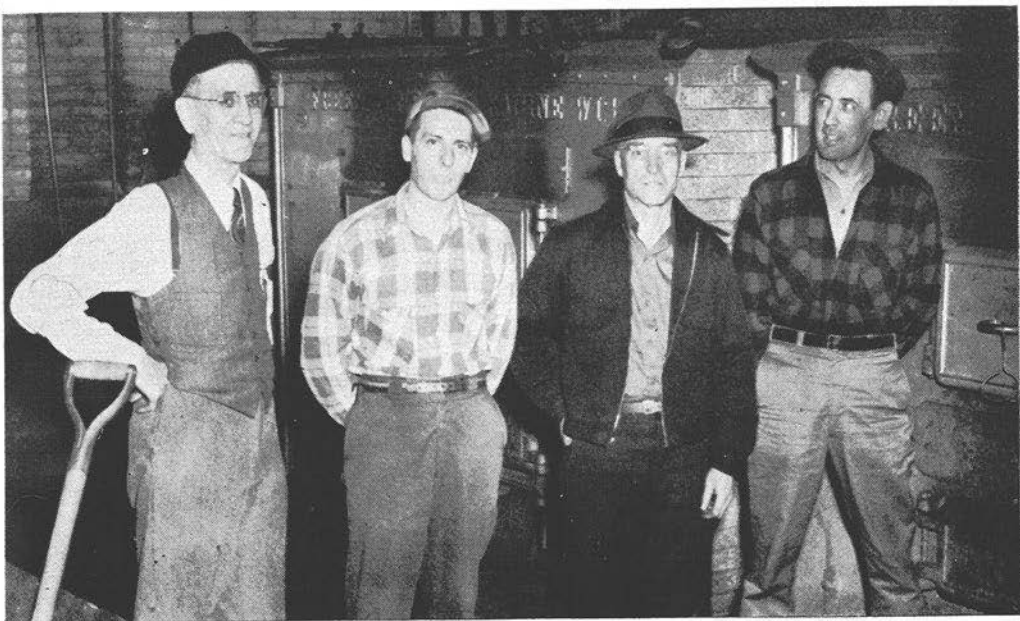
Cramming for Exams . . .

Don and Ray in search of "light" . . . The grim attack . . . A study of study . . . Lost in the realm of art . . . Three mosquitos buzzing for an "A".



Bottom Row: Erickson, I., Skalski, S., Przybylski, R.
Middle Row: Rasmussen, J., Mansavage, F., Davis, L.
Top Row: Okray, V., Spence, V., Haase, M.

Maintenance . . . Doctors of Human Comfort



George V. Stien, Adam Rybicki, William Epright, Edward McLaughlin.



Nuff Sedl . . . Mr. Lewis, Business Adviser, Miss Glennon, Editorial Adviser . . . F. De Guire, Editor, Dave Ross, Composition Editor, Pat O'Brien (in by a nose) Advertising Manager . . . Working **Hard**, W. Anderson, J. Mulady, J. Summers, A. Raaths, J. Czerniewski, R. Tallmadge, D. Johnson . . . Working **Still**, S. Sonnenberg, D. Ross, S. Kubisiak, L. Glasel, P. O'Brien, F. DeGuire, G. Holstein, P. Derge . . . "What's up?" P. Derge, F. DeGuire.

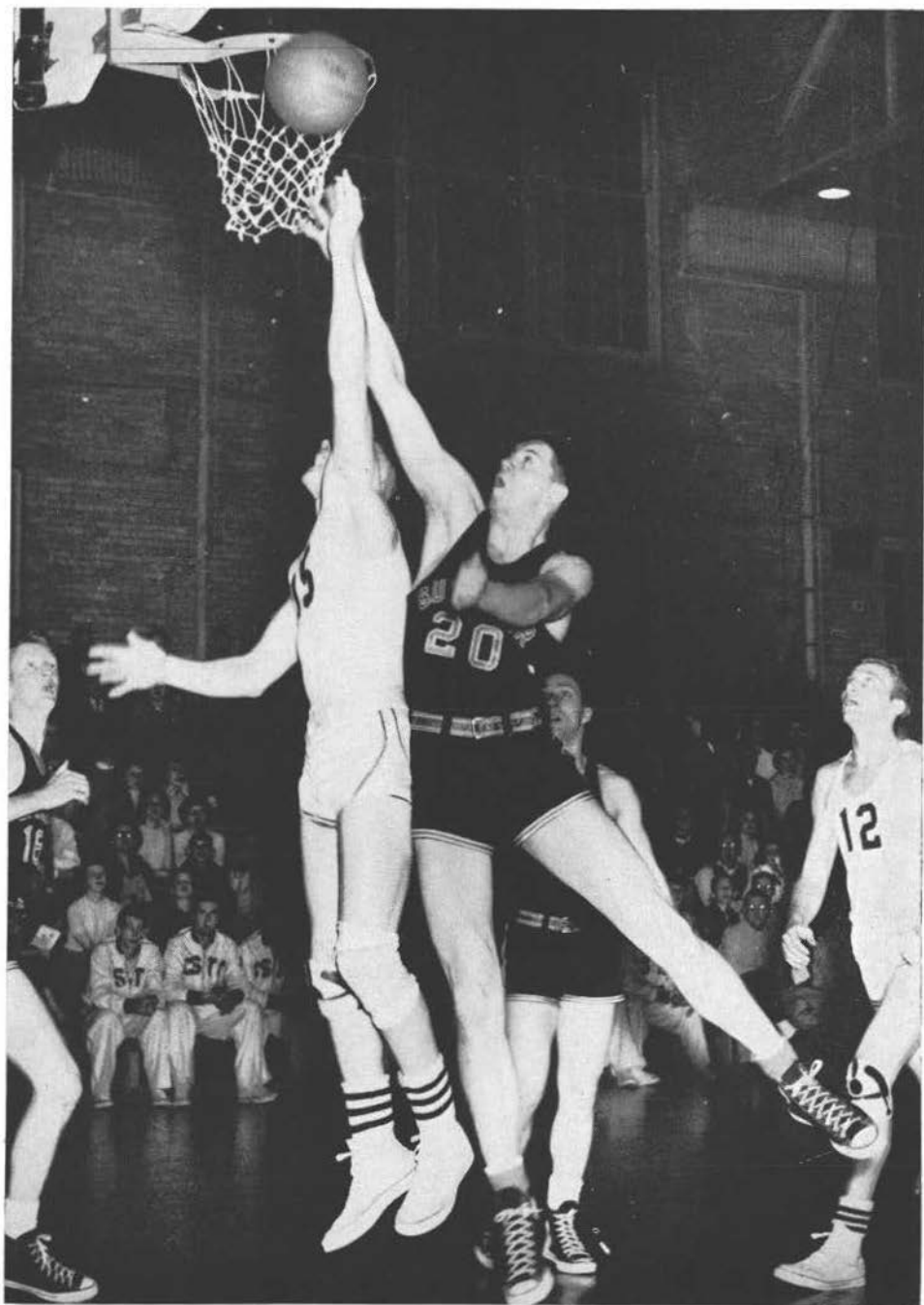


Norma Mayer, Editor, working A. Long, Business Manager, with Mr. Eagon, Adviser . . . Mr. Tolo brings light into the cave . . . All play, no work at Iris office. I. Hirzy, Identification editor, L. Lovdahl, Ass't editor, Mr. Tolo, Business Adviser, E. Farris, Ass't Identification editor, M. Smith, Lay out editor . . . E. Bauer, Copy editor, Arline Meister, Mary Douville, picture scheduler, Helen Jones.

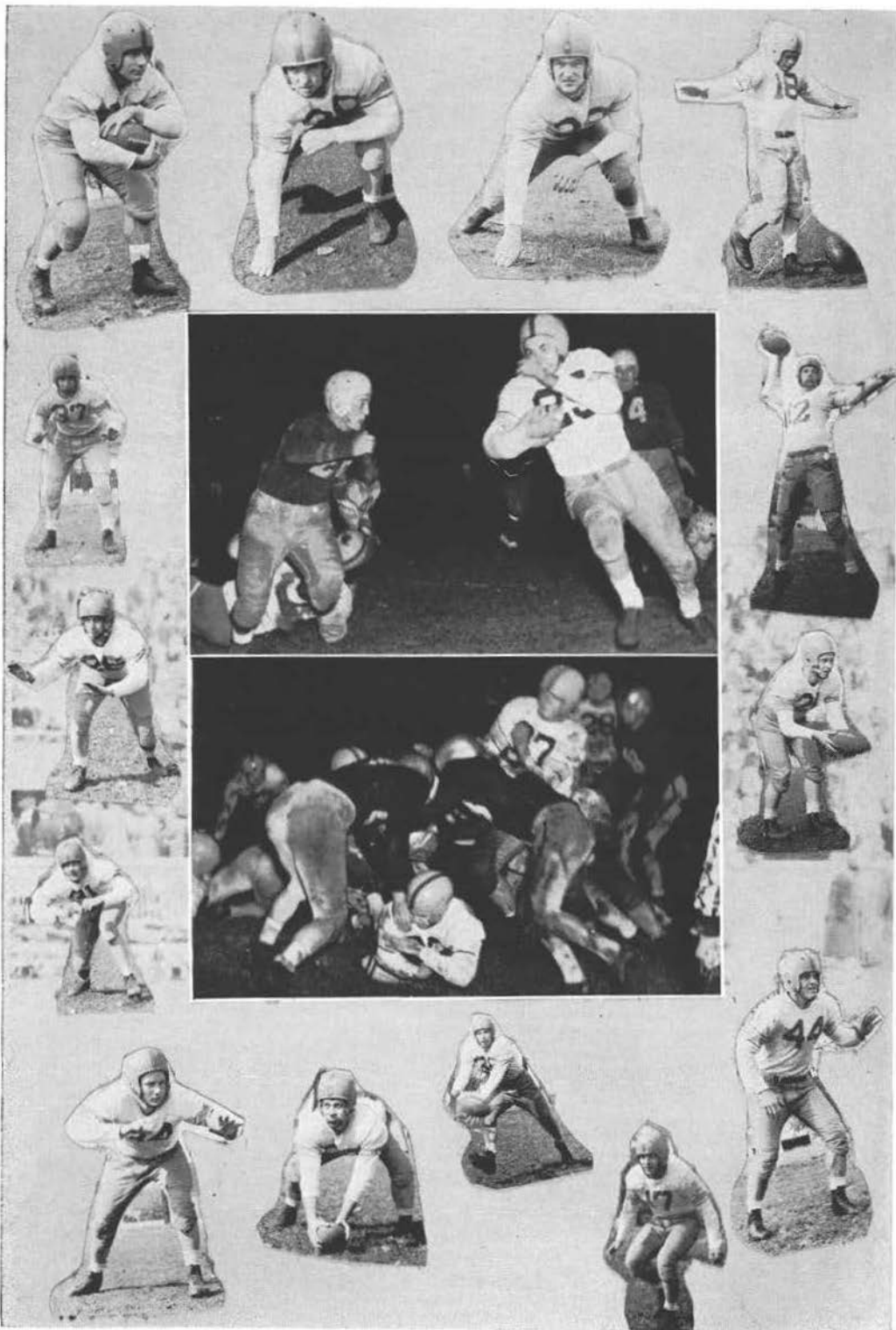
The Iris

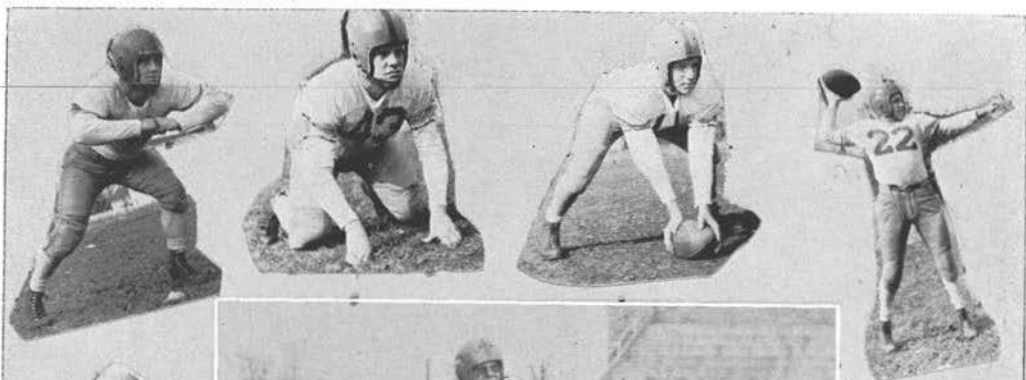


Snaps



Athletics





Football . . .



Mr. Zuandt



Mr. Berendt



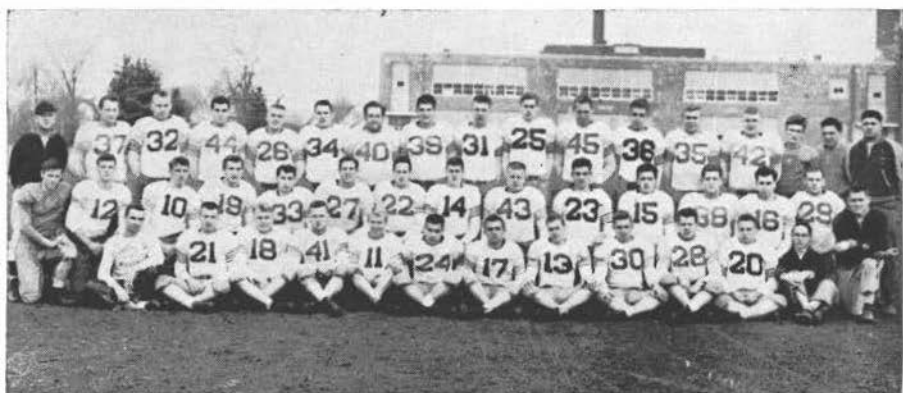
Mr. Kulich

The Season

Two facts about the 1951 football season stand out conspicuously. Number one was the weather, and number two was the way the games turned out. The first three ball games of the season were played in torrential rain. The other conspicuous fact is that try as they might the Pointers could not win a game. Four of the scheduled seven games ended in ties, equalling a national record for ties in seven games. The other three games were lost by a total of fourteen points.

However, the squad kept coming back, fighting for every bit of gridiron turf, never yielding, always charging. Pointer backers can be more than proud of a team that never knew the word quit, even at the final gun.

CSC	13	Michigan Tech	13
CSC	7	La Crosse	13
CSC	0	Whitewater	7
CSC	7	River Falls	7
CSC	13	Milwaukee	13
CSC	0	Oshkosh	0
CSC	6	Platteville	7



Bottom Row: Baerenwald, Douglas, Due, Karls, Koehn, Herman, Popeck, Wislinsky, Hunter, Miller, N., Arnett, Foster, Manager.
 Middle Row: Hackbart, Krenz, Lindquist, Gilbert, M., Buchholz, Brunsman, Samelstad, Sly, Dufour, Zwick, Schwartz, Obey, Purchatzke, B., Bliese, Kulick.
 Top Row: Coach Quandt, Dehlinger, Bostad, Brandt, Sanks, Foster, Joswiak, Andrews, Nelson, Cook, Mundt, Becker, Schommer, Jelinek, Junior, Hellner, Berndt.



Bliese



Jelinek

Honors

It was way back in 1948, that CSC was blessed with two strapping youths from Wausau, Wisconsin. Both were products of the powerful Win Brockmeyer school of football. Though these facts are interesting in themselves, the important phase is the part these lads played in enhancing the fortunes of Central State athletics.

Both fellows landed a regular berth on the '48 Pointer contingent, Dave Bliese at a half-back spot and Jerry Jelinek as a tackle. In the next three years the boys were threats in the Pointer drive and in 1949 helped the Purple and Gold to a share of the Wisconsin State loop crown.

It was the 1951 season, however, that the Wausau duo really came into their own. Despite a team record that was not too impressive the conference coaches saw fit to place both Dave and Jerry on their top all-conference team, a fitting climax to their four years at CSC.

Basketball

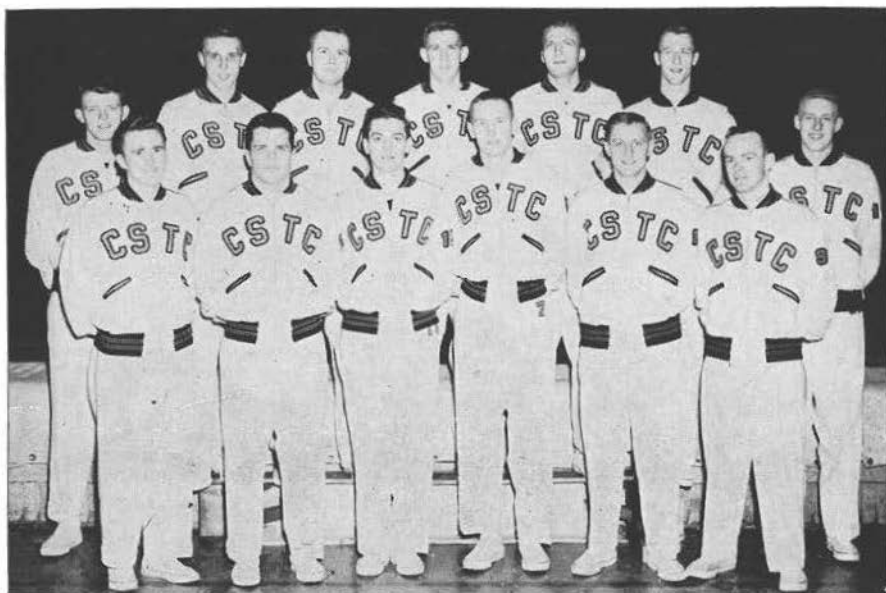
*Scoring high
with Coach Quandt
and CSC
Chet Polka and
Bill Wagner*



Running, driving, charging, and winning; that was the CSC hardcourt ensemble for 1951-52. Led by dependable seniors Chet Polka and Bill Wagner, the Quandt cagers rang up fifteen wins against only six defeats, and at one time ran the victory skien to ten games. Among the Pointer victims were the state basketball powerhouses, Whitewater and St. Norberts. Both teams were no match for our indomitable cagers on our home court as the Pointers by thrilling comebacks whipped the Quakers 79-76 and the Green Knights of St. Norberts in an overtime thriller of 64-61.

The team had plenty of height under the boards and plenty of speed in the forecourt. But above all, there was present the fight, spirit, and will to win when tangible advantages were against us. Time and again this drive netted us victories that were marked as defeats.

Besides the sparkplugs, Polka and Wagner, Coach Quandt had any number of capable men to insert in the lineup at the crucial moment. Leading the Purple and the Gold to a successful season were Ray Anderson, Dick Bechard, Les Thompson, Bob Bostad, Fred Schadewald, Bob Blomiley, Phil Jones, Willie Herrick, Gene Sodersten, Don Brewster, Nubbs Miller, Tom Ackerman and Jerry Boldig.



Bottom Row: Polka, Miller, N., Helixon, Bostad, Anderson, R., Bechard.
Top Row: Blomiley, Ackerman, Jones, Thompson, L., Wagner, W., Schadewald, Boldig.

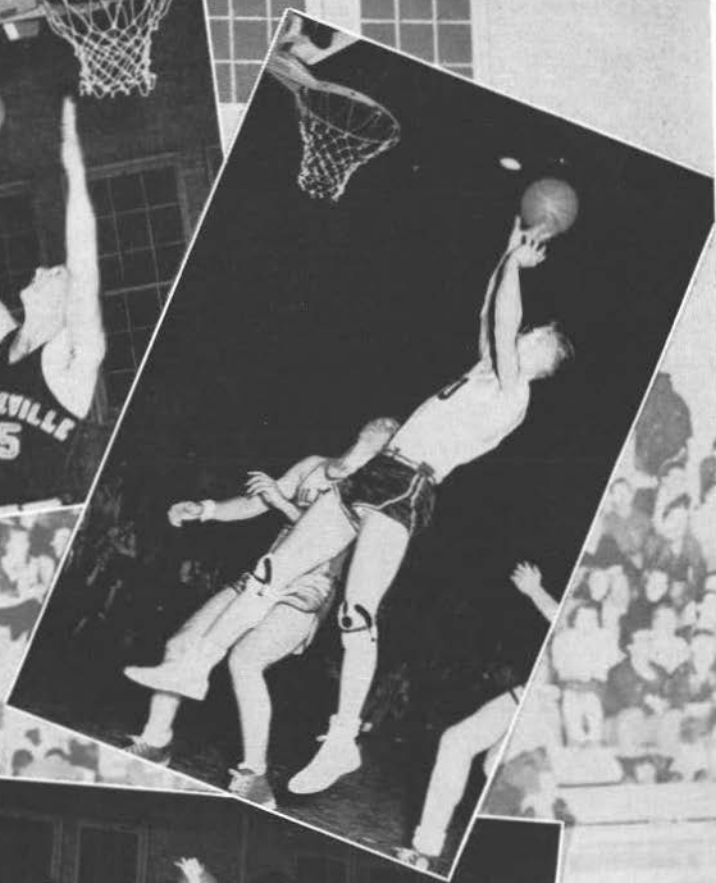
Scores

CSC 50	St. Norbert	63
CSC 78	Northland	46
CSC 73	Milton	63
CSC 81	Michigan Tech	69
CSC 67	Winona	52
CSC 75	Oshkosh	44
CSC 72	Platteville	70
CSC 70	Camp McCoy	75
CSC 72	Milton	65
CSC 64	St. Norbert	61
CSC 74	Stout	62
CSC 63	La Crosse	76
CSC 71	Milwaukee	76
CSC 65	Whitewater	78
CSC 44	Oshkosh	52
CSC 70	Platteville	54
CSC 67	Superior	75
CSC 67	River Falls	61
CSC 72	Winona	70
CSC 62	Milwaukee	66
CSC 79	Whitewater	76

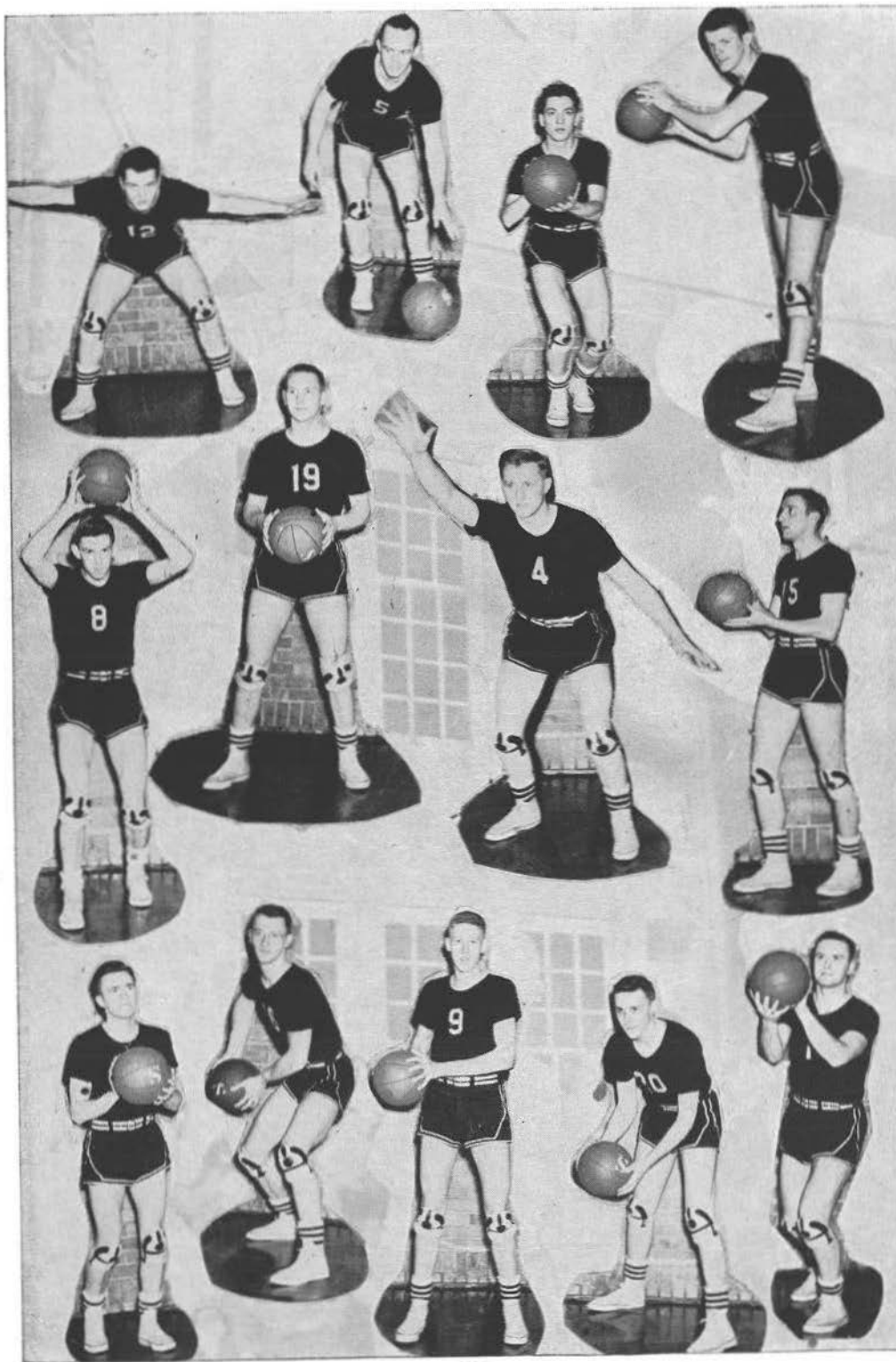


TEAM MANAGERS
Gerald Baerenwald, Kenneth Foster.









Cross Country



Cross Country: McNamara, Holding, Jacobsen, Coach Crow.

"S" Club



Top Row: Krentz, Berkahn, Ullsberger, Gilbert, Koehn, Karls, Douglas, Jacobsen, Clayton.
Middle Row: Schommer, Anderson, Polka, Wagner, Zwolinski, Dehlinger.
Bottom Row: Miller, N., Baerenwald, Tanner, Popeck, DeGuire, Sanks.

W. R. A.



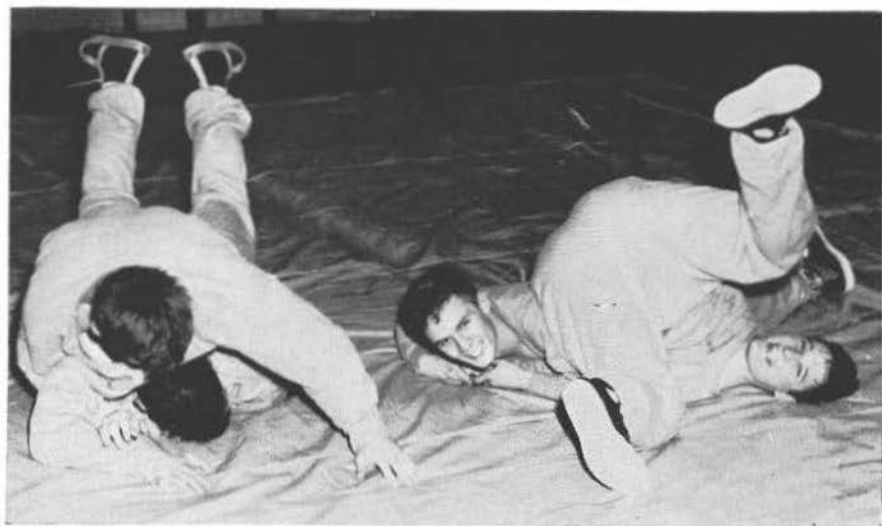
"Shure Shots"

Intramurals



Play Ball!

Wrestling



Brandt, Gilbert, Junior, Foster.



Karls, tackling high school opponent, Jerry Menzel.

A new sport made a brief appearance in the gymnasium of CSC this year. When John Roberts, newly appointed football and track coach, came to our college, he brought with him a plan to introduce intercollegiate wrestling. The squad, numbering twenty men, conducted nightly workouts in the college gym, and a meet was arranged with Ripon, which has been for many years a power in the Midwest Conference. The Pointer grapplers made a very creditable showing and dropped a close 17-13 decision. Coach Roberts was tremendously pleased with the interest and the results shown in this embryonic sport.

Track



Coach Roberts



Coach Quandt



Top Row: Miller, N., Rucinski, Brandt, Andrews, Cook, W., Becker, Dineen, Baerenwaid.
Bottom Row: McNamara, Jacobsen, Hackbart, Marquard, Wislinsky, Polzin, Sandberg.



Journal Relays: Marquard, Hackbart, McNamara, Jacobsen.

Under the guiding eye of a new coach, CSC thinclads competed in a full season of eight meets. Coach John Roberts started his charges on the cinder paths before the winter snow disappeared.

The season began with a new innovation, an inter-class meet, on the 25th of April and proceeded to a climax with the state meet in Milwaukee on the 24th of May. A new opponent was added to the CSC ledger when the Pointer "thinlies" met famous Lawrence College of the Midwest Conference at Appleton on the 3rd of May. The annual opponents, Oshkosh, Whitewater, Michigan Tech, St. Norbert, Eau Claire, and River Falls collaborated to make the season an interesting one.

The famed Journal Relays held at the Milwaukee Arena on the 1st of February drew a team from CSC for competition in the Small College Relays. The baton was carried for the Purple and Gold by Rhody Marquard, Roy Hackbart, Bart McNamara, and the state wide two mile champion, Ed Jacobsen.



On your mark, Ready... Go!



Crossing the Bar

Tennis



This way, Jerry

Working under two great handicaps, unpredictable spring weather and lack of practice space, Coach Bernard Wievel sent to the courts a tennis squad whose spirited play provided fans with plenty of thrills. The team, after finally getting out in the open, practiced and played their home matches on the Hardware Mutual clay court. Play opened on April 26th with the Pointers traveling to Appleton to meet Lawrence College.



Bottom Row: Polka, Due, Samelstad, Case.
Top Row: Eves, Cook, R., Sommers, Johnson, R.

Golf



Ullsperger, DeGuire, Polzin, Schweindler.

Following the practice of the other sports, the golf squad worked under the direction of a new coach this year. Headed by Coach Hale Quandt, the Pointer contingent shot their pars and birdies at the Whiting Country Club course in preparation for six encounters. Furnishing the opposition were Lawrence College, Oshkosh, St. Norberts, and Michigan Tech with all the meets except St. Norberts played on the opponents' courses. The season ended on May 24th with the conference schools in the state meeting at Oshkosh.

*Showing
good
form*





Athlete's Feet . . . Day Is Done

College of Letters and Science

Bachelor of Arts

Bachelor of Science

A step forward in development of Central State

The College of Letters and Science was created by the Board of Regents in the spring of 1951. This new step in the development of Central State was taken to increase the opportunity for Wisconsin citizens to receive education leading to the Bachelor of Arts and Bachelor of Science degrees.

The aims of the general courses in this college are, first, to provide the student with sound education in social studies, sciences, languages, and humanities which will prepare him to be a well informed citizen qualified for responsibilities and leadership in our democratic society; and second, to provide the basic training for professional, technical, and graduate studies.

Approximately three hundred and fifty students have registered in Letters and Science this year. Many of these will soon transfer to the Divisions, which train students for teaching in the public schools. Others will continue their training for entrance to professional and technical schools. Still others will graduate with the Bachelor of Science or Bachelor of Arts degree and continue their studies in graduate schools of research and scholarship. Already fourteen students, who had arranged their courses in anticipation of these degrees, have graduated and are now working in private business, or studying for advanced degrees, or are scattered around the world in the military services. As many more will be added to the list of Letters and Science graduates this June.

Warren Jenkins



Consultation with the Dean



Alpha Gamma members, John Mallow and Frank DeGuire with adviser, Raymond Specht.

Honorary Organizations



Bottom Row: Kohls, Drew, Dietsche, Eves, Todd, Cook, Schumacher.
 Middle Row: Froeba, Hall, Bassler, Rhode, Wilde, Helgerson, Kellogg, Seidl.
 Top Row: Joswiak, Gilbert, B., Blackman, Martell, Spaulding, Schneeberg, Jensen.

Alpha Kappa Lambda . . . Alpha Gamma



Bottom Row: Nagy, Clayton, W., Sannes.
 Middle Row: Krueger, Papke, Byrne, Kellogg, Flint.
 Top Row: Bartosz, Kussman, Mozuch, Olsen, D., Long, Polzin, J.



Bottom Row: Douville, Nelson, B., Mr. Michelsen, Fehrenbach.
 Top Row: Gruen, Anderson, L., Endle, Miller, L., Goebel.

Alpha Kappa Rho . . . College Theater



Bottom Row: Skowronski, Rezniczek, Silverman, Boettcher, Butts, Domack, A.
 Top Row: Gruling, Rebella, Suehring, Kampenga, Martens, Connor, Dreschler.



Bottom Row: Rebella, Hodgdon, Fischer, Connor, Popeck, Swanke.
 Top Row: Moore, Jacobson, Jones, Mr. Knutzen, Byrne, Skowronski, Mr. Burroughs, Miss Davis.
 SIGMA TAU PLEDGES Popeck, J., Hodgdon, C., Fischer, V., Connor, S.

Sigma Tau Delta

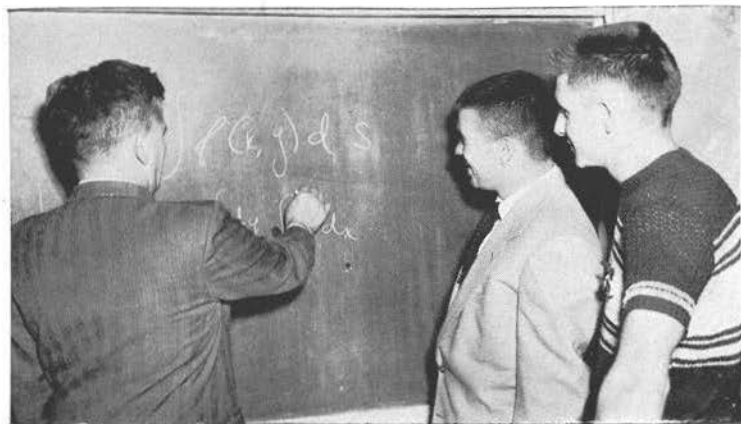


Top Row: Douglas, K., Sommers, Bauman, Holstein, Clark, Pfiifner, Greaton, Mulady.
 Bottom Row: Cook, W., Andrews, O., Behrendt, Freiberg, Vissers, Bruha, J.



Top Row: Mr. Faust, Mr. Boylan, Hoffman, Wilder, Nikolai, Borchardt
 Bottom Row: Long, Richmond, Kampenga, Schmeeckle, Garbrecht, Mr. Trytten

Sigma Zeta



Mr. Boylan, Douglas, Sommers



Religious Organizations

Gamma Delta



Top Picture
 Bottom Row: Pastor Wunderlich, Ferdon, Mayer, N., Bauer, Lane, Christoffersen, Buttke, L., Kuhnke.
 Middle Row: Fairbert, Williams, Haas, Mews, Jean, Mews, Joan, Teetzen, Zastrow, Bruha, J.
 Top Row: Buttke, R., Moen, Gruling, Baerenwald, Bruha, D., Ross, Heiser.
 Bottom Picture
 Bottom Row: Meister, Raaths, Boettcher, Moll, Buggs, Kohls, Suring, Cram.
 Middle Row: Mueller, Hackbart, Habeck, Smith J., Martens, Ziebarth, Hoffman, Teetzen, Colru.
 Top Row: Zingler, Jones, J., Lovdahl, Lehmann, Hoffmann, Tischendorf, Weber, Voight, Kalepp,
 Carlson.

L. S. A.



Row 1: Holm, Garbrecht, Abrahamson, Thompson, O'Neill
Row 2: Olson, Thompson, D., Barrett, Bullock, McLees, Albrightson
Row 3: Rev. Orvis Hanson, Iverson, Diver, Broten, Paulson, Anderson, W.
Row 4: Meyer, Sault, Reed, Cook, Abrahamson, Kristianson, Olsen

Wayland

Wayland, a group that was camera shy this year, represents the Baptist element on the campus. Emil Richetto, first semester president and Connie Gage, second semester president, kept the group active by promoting a series of Bible studies, a Thanksgiving banquet and a trip to Soule's Convalescent Home to sing for the old folks at Christmas time. Miss Jessiemae Keyser is the faculty adviser while Mr. J. L. Pickett is spiritual counselor.



Top Picture

Row 1: Pfiffner, Rodriguez, Borja, Lindquist, Bauman, Dreschler, Welniak, Douville.

Row 2: Hartleb, Pierre, Charlesworth, Colina, Gerber, Sazama, Baumer, Langfeldt.

Row 3: Leahy, Huel, Weisbrot, Karls, Krumm, Zukoski, Roberts, Panke, Farris.

Row 4: Miss Roach, Turzenski, Ampe, Wenzel, Wesley, Polka, Rothamer, Schumacher, Nikolay, G.

Bottom Picture

Row 1: Wagner, M., Meyer, Dineen, Reda, Wagner, I., Sommers, Biechler, Landowski.

Row 2: Wilk, Roseth, Rozak, Polivka, Redmond, Miller, Palmer, Wagner, J., Bertz.

Row 3: Bauman, Gravitter, Ortlieb, Kearns, Hazelwood, Hackel, Nelson, J., Allen, K.

Row 4: Schultz, Thurston, Lebrick, Rataczak, Forth, Forth, Steckbauer Butts, Schroeder, J.

Newman Club

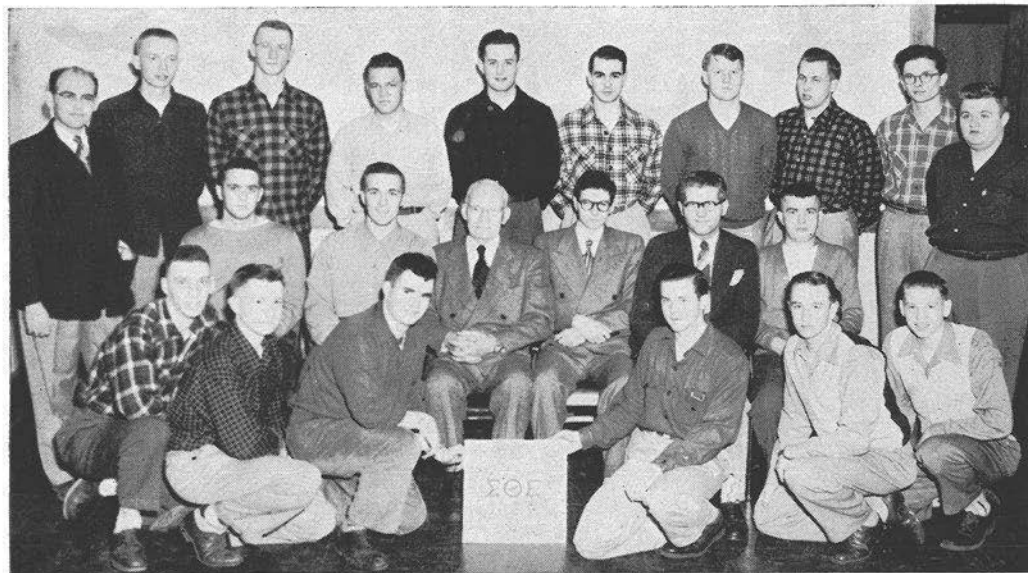


Row 1: Foster, J., DeGuire, Reinholt, Fox, McGoff, Nicholai, Koehn, Brunzman.

Row 2: Benjamin, Leitner, Elsen, Stankevich, Krell, Lemiesz, Curran, Lensmire.

Row 3: Czerniewski, Derge, Summers, Brittnacher, Schuelke, Gossage, Schroeder, C., Bricco, Lange.

Row 4: Staschek, Berglin, Geise, Figel, Zahradka, Collins, Schlottman, Domack, Domack, A., Yentz.

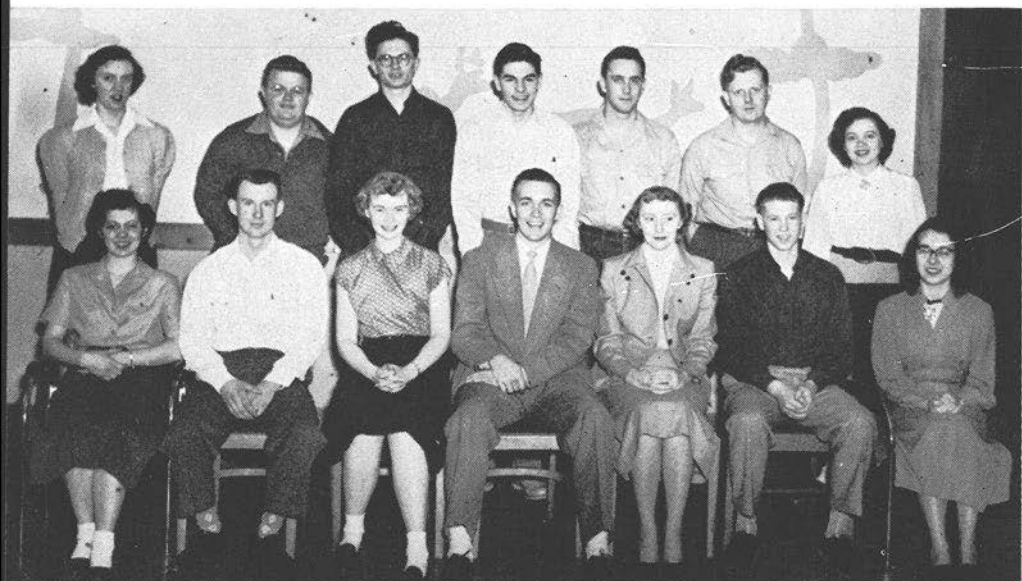


Row 1: Schweindler, Sorensen, Williams, Wade, Tozer, Cook, R.
 Row 2: Gilbert, Heuer, Dr. Lyness, Butler, Rev. Vander Graff, Douglas, K.
 Row 3: Mr. Lewis, Holding, Schadewald, Tanner, Douglas, D., McCandless, Zick, Wolfe, Schneeberg, Kellogg

Sigma Theta Epsilon . . . Trigon



Bottom Row: Holt, Caskey, Hoef, Rezniczek, Breyman, Schilling.
 Middle Row: Tauchen, Bea, Curtis, Craig, Dahm.
 Top Row: Gerner, Clayton, W., Papke, Zellinger.



Bottom Row: Smith, Marguerite, Wilde, R., Polzin, R., Heuer, Gruen, Cook, R., Pautz.
 Top Row: Edmund, Kellogg, Schneeberg, Butler, G., Gilbert, B., Don Warner, Mrs. Don Warner.

Wesley



Bottom Row: Clark, G., Schweindler, Thirkill.
 Middle Row: Tallmudge, Bartelt, Warner, K., Court, Dr. Lyness, Warner, D., Moe, Smith, Mary Ann, Warner, P., Eide.
 Top Row: House, Gilbert, C., Isberner, Douglas, Rev. Jans Vander Graff, Sorensen, Benson, Sutton, Court, Williams, J., Cuff.

Interfaith Council

The members of the Interfaith Council are representatives of religious organizations that aim to create closer unity between the campus religious groups. With the help of its adviser, Dr. Trytten, the council sponsored the Thanksgiving assembly and other projects to stimulate interest in church attendance.



Sected: Curry, N., Mr. Trytten, Weisen, Isberner.
Standing: Gruen, Kristiansen, Davies, N., Sorensen, Nyberg, Richetto.



The Greeks

Omega Mu Chi



Row 1: Fehrenbach, Cuff, Figel, Fischer.

Row 2: Robertson, Pinkerton, Swanke, Scribner, Held, M., Tibbetts, Thompson, Donna, Bens Sarbacker, Obey.

The Omega Mu Chi sorority organized in 1926 is distinguished by colors of violet and yellow and is known for its friendliness to all. The Omegas contributed to school life through their annual Christmas Knitting Bazaar, Fall Tea and a prize winning Homecoming float. The Intersorority formal dance, in cooperation with the Tau Gams and Psi Betas, was one of the highlights of the year's activities.



Row 3: Sutton, Wanke, Bruner, Hanson, B., Sonnenberg, Jacobson, Goebel, Crosby, Corliss, Raaths, Knope, Ferdon.
Row 4: Sannes, Zarda, Jersey, Holstein, Petersen, Krell.

As president, Beverly Tibbetts led the girls through the first semester. During the second semester, president Joan Fehrenbach guided the group through second semester activities which included the colorful "Come to the Omega Mardi Gras" rushing party. The pride and joy of the group is the newly purchased five piece silver service, pattern Remembrance.



Row 1: Kuhnke, Szama, Allen, Zastrow

Row 2: Meister, Ziebarth, Miss Keyser, Mrs. Specht, Lawrie, Pautz

Psi Beta Psi

Founded in 1950, the Betas celebrated their first year of activity in the whirl of campus social life and school affairs. Their busy year began during orientation week with a skit for the new students and continued through the Homecoming festivities. Pledging began early in the spring and the new members donned chicken rings and the name of "Ispbeta" until the pledge period was ended by a formal dinner to the theme of "Showboat".



Row 3: Polivka, Reineking, Edmund, Baumer, Landowski, Schultz, Schilling, Teetzen, Mueller, Pierre
Row 4: Schaefer, Panke, McIntee, Isberner, Lovdahl

President Beverly Ziebarth guided the group throughout the year. "Mischief", the annual winter tea was an encouraging success, and the girls of the peach and green climaxed their year with the traditional all school "Court Dance". In cooperation with the Tau Gams and Omegas, the girls sponsored an Intersorority picnic of fun for all.

Tau Gamma Beta



Row 1: Newhall, Jones, M., Leahy, Moll
Row 2: Lund, Douville, Farris, Holm, Miss Winkler, Miss Van Arsdale,
Lane, Abrahamson, Hartleb, Clark

Organized in 1909, the Tau Gams have maintained a prominent position on the campus. Their enthusiastic participation in the campus activities is indicative of the sorority's loyalty to its Alma Mater. Some of the Tau Gam traditions include their annual Fall Tea, Homecoming float and Alum dinner. During the pledging seasons the pink and blue sorority colors in the form of ribbons became familiar sights to all students.



Row 3: Pfiffner, Nulty, Thompson, D., Elmer, Nelson, B., Curtis, Bauman, Rebella, Jarnick, Byrne, Zellinger, Aronson, Marros, V.
 Row 4: Johnson, D., Mayer, N., Bea, Gruen, Christoffersen, Dehlinger, B., Weisbrot, Kearns, O'Neill.



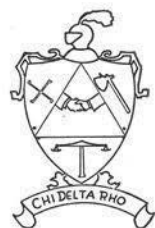
Jeanette Holm and Mary Douville, first and second semester presidents respectively, led the group through the year. The spring rushing featured a Tau Gam "Hatte Shoppe". One of the final activities of the year was the "Cotton Swirl", which was an informal dance supplemented by a floor show.



Bottom Row: Mulady, Boettcher, Ullsperger, Sandberg, Zukoski, Jacobsen
Top Row: Russell, Johnson, R., Schadewald, Cook, Bruha, J., Paulson, R., Reinholdt

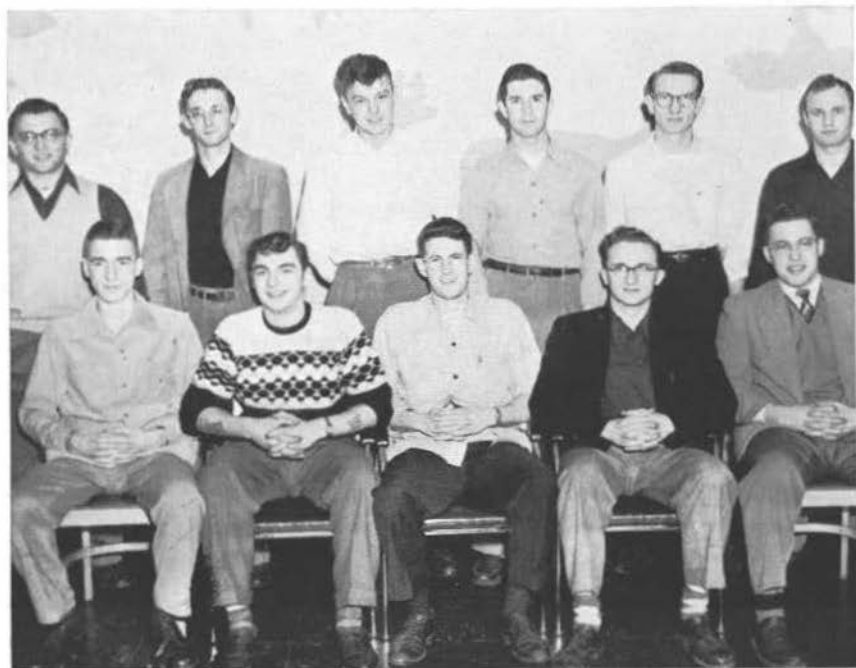
Chi Delta Rho

The Chi Delts, who elected Bill Cable and Al Long as first and second semester presidents respectively, had another very busy year. Their active pledglings kept them hopping, and their rousing cheers at the basketball and football games gave the whole school added pep. Some of their other activities included a spirited basketball team, sponsorship of a Coffee Hour, and Homecoming participation.



Bottom Row: Flint, Fairbert, De Guire, Gilbert, Olsen, Groaton
Top Row: Hoffman, Bruha, R., Jelinek, Rindfleisch, Cable, Mallow, Long, Wade

Phi Sigma Epsilon



Bottom Row: Bacon, Bogaczyk, O'Brien, Wesley, Endle.
Top Row: Popeck, Goetz, Vissers, McMahon, Gruling, Schmidler.





Bottom Row: Wilkenson, Zwolinski, Polzin, E., Anderson, R., Chick.
Top Row: Lindquist, Turzenski, Brunzman, Bartosz, Cacic.



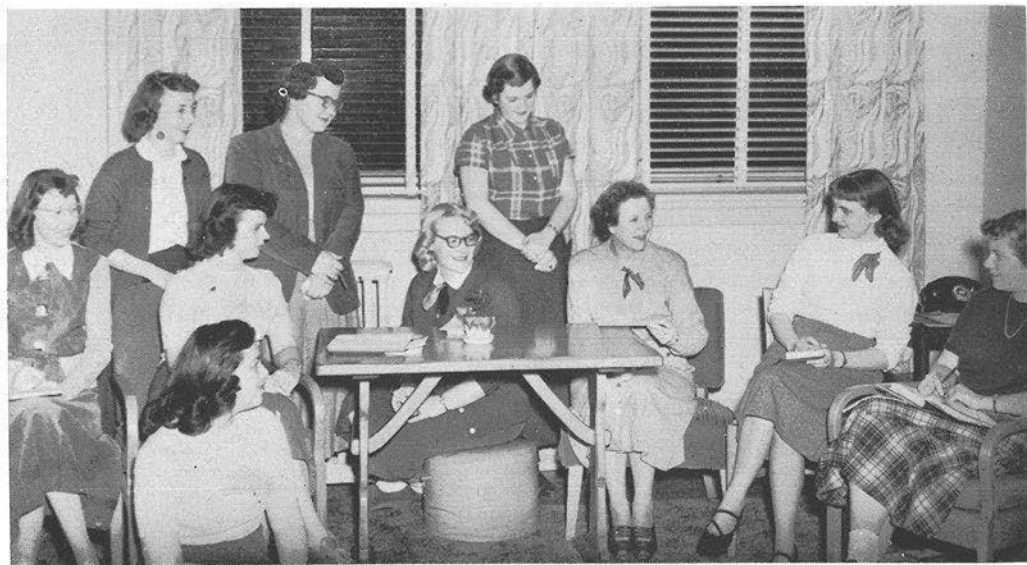
The Phi Sigma Epsilon fraternity, Kappa chapter of the national fraternity, has had another active year. Homecoming activities, pledging both semesters, their annual style show, and publishing their new alumni paper, the Kappa Khatter, are among their many activities. Leading the group as presidents during the year were Richard Turzenski and Frank Schmidler. Mr. Wievel, Mr. Michelsen, and Mr. Burroughs are the advisers.



Bottom Row: Mr. Steiner, Swanke, Long, Holm.
 Top Row: Fehrenbach, Douville, Mallow, Edmund, Turzenski, Ziebarth.

Greek Government

Seated: Brunner, Tibbetts, Swanke, Panke, Mrs. Pfiffner, Newhall, Holm.
 Standing: Thompson, Dorothy, Ziebarth, Lawrie.





Tau Gam's Fall Tea, Mrs. Faust, pouring.
 Behind the scenes with Eleanor and Phyl.
 Star light, Star bright. First star I see tonight!
 Gordy's best hand.
 Pie Sig's, Miss Meston and Miss Hanson at Omeg Tea.



Chaperones, President Hansen, Dean Steiner, Miss Van Arsdale, Mrs. Steiner, Mrs. Hansen, Miss Glennon.
Stairway to the Stars, Inter Sorority Formal.

Night Life with the Greeks



Spring!

Moving day, Delzell Hall . . . Among famous names . . . Lesprit follets . . .
 Chi Deltis climbing high . . . Gobs of mud . . . Three Ispatebs . . . Phi
 Sigs flying low.



Senior Ball

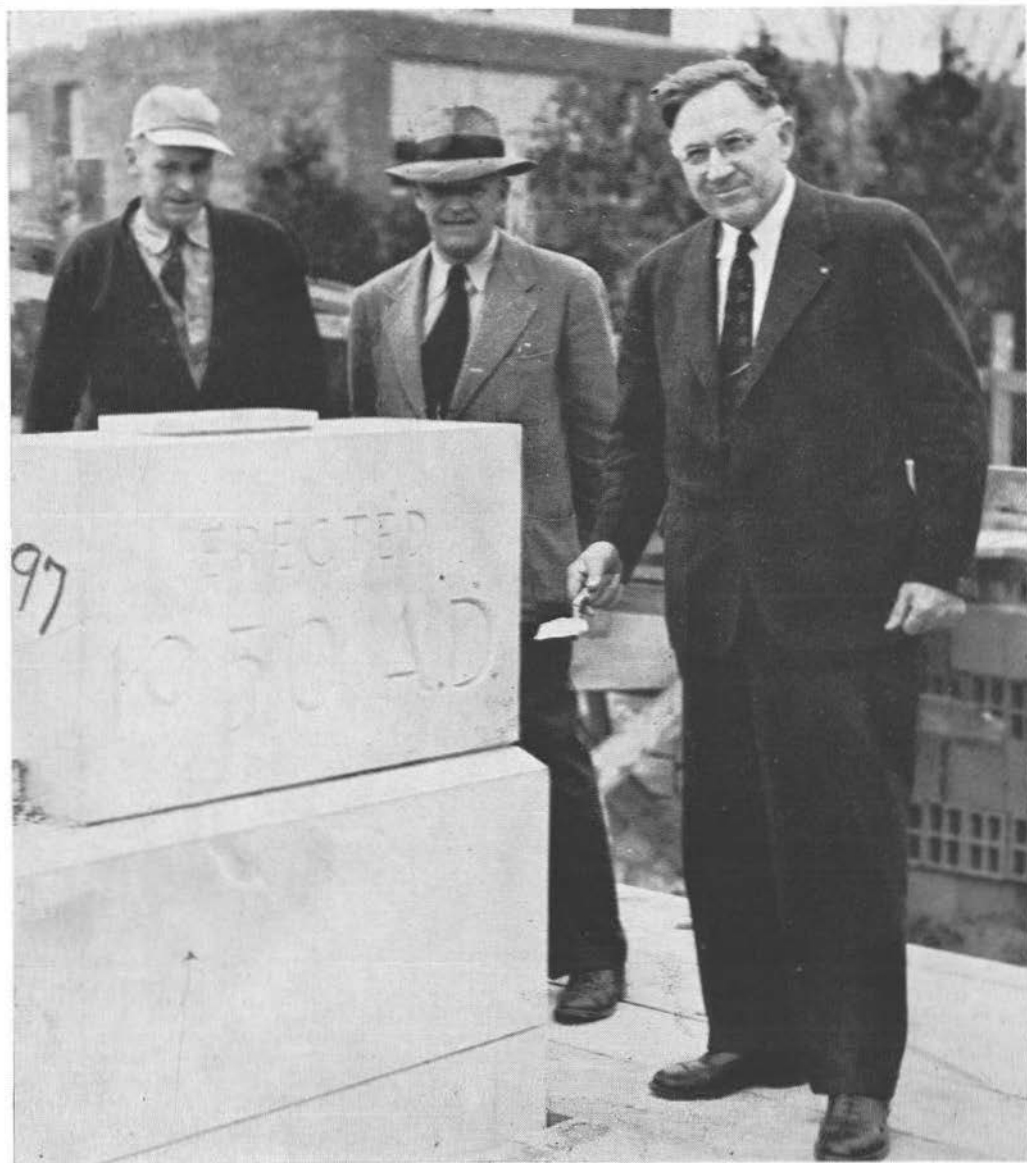
King, Gordon Fairbert; Queen, Betty Kusserow



Junior Prom

King Jack Popeck; Queen Marilyn Gossage

Laying the Corner Stone



Delzell Hall

The "Governor and Family"



Mrs. Eagon, Mr. Eagon, director of Delzell Hall and children, Baby John and Brian.

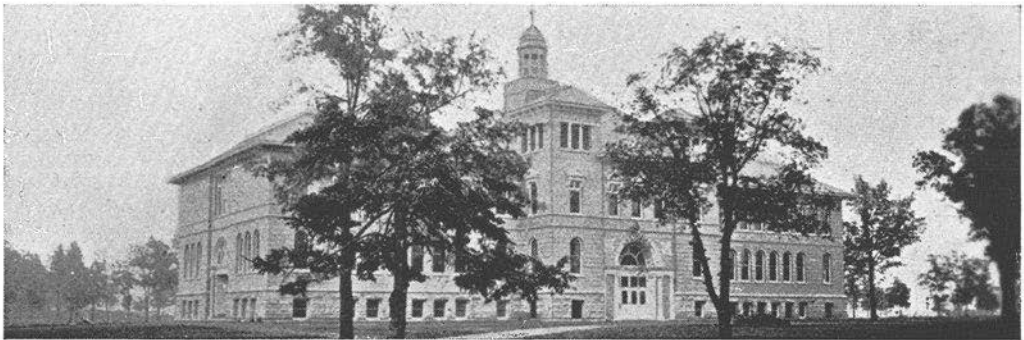
Delzell Hall



*Stevens Point Normal as CSC
Moves Forward*



Sims Cottage . . . 1915



Alma Mater . . . 1906



Double or Nothing!

Bart McNamara, our genial, gratuitous photographer, always responded with a confident grin when he received his many and varied assignments, but during Hell Week he merely groaned, "Aye, aye, Sir", when he saw his order "Double or nothing." But in true McNamara fashion he produced — and gave double trouble by finding on the campus **four** sets of twins. We're still wondering if they are properly identified.



Top Row: John Bruha, Charlotte Forth, Leona Forth, Richard Bruha.
Bottom Row: Gene Paulsen, Jean Mews, Joan Mews, Robert Paulsen.

The IRIS Staff

Norma Mayer, Editor

Lillian Lovdahl, Assistant Editor

Alvin Long, Business Manager

Jack Popeck, Advertising Manager

Copy

Eunice Bauer, Mary Ann Smith, Joann Cuff,
Jo Burhdorf, Lois Weber, Arline Meister, Ruth Charlesworth,
Mary Bartelt, Betty Crook

Layout

Marguerite Smith Helen Jones

Identification

Ilse Hirzy, Ethel Farris, Mary Wesley

Photography

Bart McNamara, John Behrendt, Bill Schweindler, Dorothy Gerner
Mary Douville, Picture Scheduler
Richard Francis, Picture Adviser

Art

Shirley Kubisiak Diane Seif

Sports

Bart McNamara, Jack Popeck, Henry Dreschler

Typists

Alice Tauchen Arline Meister

Business

Al Long, James Mulady, Judy Clayton

Advertising

Jack Popeck Marguerite Smith

Advisers

Editorial

Business

Art

Photography

Burdette W. Eagon

Harold M. Tolo

Edna Carlsen

Gilbert W. Faust

*Many thanks
to all
who made this
book possible.*

The Staff.

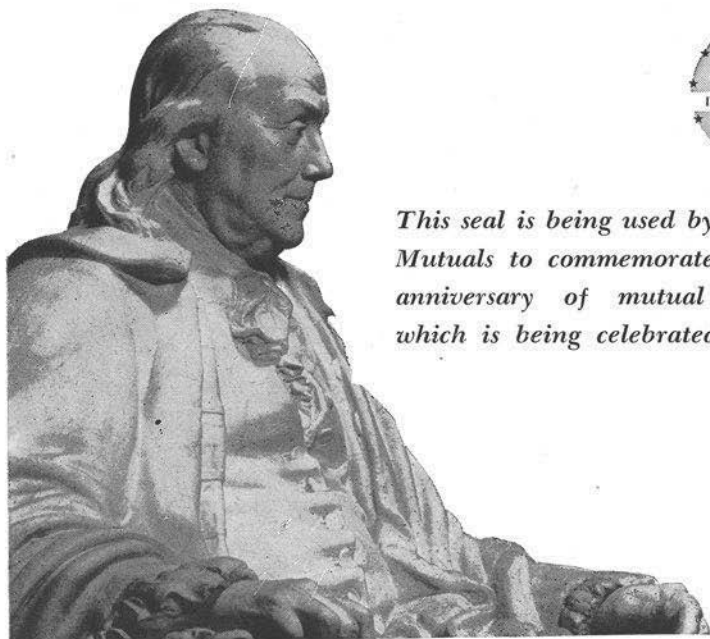
Faculty

Pages 13 to 18

- WILLIAM C. HANSEN** — President
Graduate, Stevens Point State Normal School; B.S., M.S., University of Wisconsin.
- BESSIE MAY ALLEN** — Home Economics
Graduate, Iowa State Teachers College; B.S., M.A., Columbia University.
- MONICA E. BAINTER** —
Physics, Mathematics
A.B., College of Saint Teresa; M.A., University of Minnesota.
- ESTHER BERNDT** — Kindergarden
B.E., Central State Teachers College
- RICHARD BERNDT** — Assistant Coach
B.S., Central State Teachers College
- KENNETH W. BOYLAN** — Mathematics
Graduate, Stevens Point State Normal School; B. S., M.A., University of Minnesota.
- LELAND M. BURROUGHS** —
English, Speech
A.B., Wabash College; Graduate King's College of Oratory, Pittsburgh; M.A., University of Michigan.
- EDNA CARLSTEN** — Art
B.A.E., Teacher Training Course, Chicago Art Institute.
- SUSAN E. COLMAN** —
Director, Primary Education
Graduate, Superior State Normal School; Ph.B., Ph.M., University of Wisconsin.
- FRANK W. CROW** — History
A.B., B.S. in Ed., Northwest Missouri State Teachers College; Ph.M., University of Wisconsin.
- EDITH P. CUTNAW** —
Junior High School Supervisor
Graduate, Oshkosh State Normal School; Ph.B., Ripon College; Ph.M., University of Wisconsin.
- MILDRED DAVIS** — Foreign Languages
A.B., M.A., State University of Iowa.
- LEAH L. DIEHL** —
Fourth Grade Supervisor
Graduate, Milwaukee State Normal School; Ph.B., M. A., University of Chicago.
- QUINCY DOUDNA** —
Director, Rural and Upper
Elementary Education
B.A., Carroll College; M.A., Ph.D., University of Wisconsin.
- BURDETTE W. EAGON** —
Sixth Grade Supervisor
B.S., Oshkosh State Teacher, M.S., University of Wisconsin.
- AROL C. EPPL** — Biology
B.S., M.S., University of Wisconsin.
- GILBERT W. FAUST** — Chemistry
B.S., M.S., University of Wisconsin.
- BERTHA GLENNON** — English
Graduate, Stevens Point State Normal School; A.B., M.A., University of Wisconsin.
- RAYMOND E. GOTHAM** —
Director, Training School
Graduate, Superior State Teachers College; B.S., Ph.M., Ph.D., University of Wisconsin.
- ALICE HANSEN** —
Fifth Grade Supervisor
B.E., Whitewater State Teachers College; M.S., University of Wisconsin.
- GERTIE L. HANSON** —
Geography, Radio
Graduate, La Cross State Normal School; Ph.B., Ph.M., University of Wisconsin.
- ALBERT E. HARRIS** —
Philosophy, Psychology, Education
B.E., La Crosse State Teachers College; Ph.M., University of Wisconsin.

- NELS O. REPPEN —
Education, Social Studies
A.B., M.A., Ph.D., University of Wisconsin.
- RAYMOND M. RIGHTSSELL — Director,
Secondary Education; Physics
A.B., Indiana State Normal College;
M.A., University of Cincinnati.
- MARGARET RITCHIE —
Assistant Librarian
B.A., Carlton College; B.S.L.S., University of Illinois.
- MAY M. ROACH — Rural Education
Graduate, Stevens Point State Normal School; B.S., University of Minnesota.
- JOHN ROBERTS — Instructor, Physical
Education, Football and Track
B.S., M.S., University of Wisconsin.
- MARY S. SAMTER —
First Grade Supervisor
Graduate, Stevens Point State Normal School; B.E., Western Illinois State Teachers College; M.A., University of Iowa.
- FRED J. SCHMEECKLE — Conservation
B.S., A.B., State Teachers College, Kearney, Nebraska; M.S., Clark University.
- RAYMOND E. SPECHT — Geography
B.S., Oshkosh State Teachers College; M.A., Clark University.
- HERBERT R. STEINER — Dean of Men,
History
Graduate, Stevens Point State Normal School; Ph.B., Ph.M., University of Wisconsin.
- HAROLD M. TOLO — History
A.B., Luther College; A.M., University of Minnesota; Ph.D., University of Illinois.
- ROLAND A. TRYTTEN — Chemistry
B.A., St. Olaf College; Ph.D., University of Wisconsin.
- MARY M. ULLMAN — Junior High
School Supervisor
B.E., Central State Teachers College; Ph.M., University of Wisconsin.
- GLADYS VAN ARSDALE —
Third Grade Supervisor
Graduate, Iowa State Teachers College; A.B., Iowa State Teachers College; M.A., Columbia University.
- BERNARD F. WIEVEL — Conservation,
Industrial Arts
B.E., Platteville State Teachers College; M.S., Ph.D., Iowa State College.
- MILDREDE L. WILLIAMS —
Second Grade Supervisor
B.A., Iowa State Teachers College; M.A., Columbia University.
- EMILY WILSON — Home Economics
B.S., Kansas State Teachers College; M.S., Kansas State College; Ph.B., University of Chicago.
- CECILIA WINKLER — Supervisor of the
Rural Training School
B.E., Central State Teachers College
- SIDONE ANDERSEN —
Secretary, Record Office
- JOANNE CERNEY —
Secretary, Record Office
- TOULA MARROS —
Secretary, Main Office
- GRACE PEHOSKI —
Secretary, Main Office
- CAROLYN G. ROLFSON —
Administrative Assistant
- MARIE SWALLOW
Secretary, Training School
- ROBERTA VAUGHN — Secretary
- DR. H. A. ANDERSON —
Physician for the College
- MARY NEUBERGER — College Nurse

- HELEN M. HEEL — Music Supervisor
B.S., State Teachers College, Gorham, Maine; M.Music., University of Michigan.
- PAULINE ISAACSON —
History, Speech
B.E., River Falls State Teachers College; M.A., University of Wisconsin.
- WARREN G. JENKINS — History
A.B., Miami University; M.A., Ph.D., University of Wisconsin.
- DOROTHY CHRISTIE KAMPENGA —
Training School Library
A.B., University of Michigan. Part-time assistant.
- NELIS R. KAMPENGA — Librarian
A.B.L.S., A.M.L.S., University of Michigan.
- JESSIE MAE KEYSER
B.A., Muskingum College; M.S., University of Wisconsin
- NORMAN E. KNUTZEN — English
Graduate, Stevens Point State Normal School; A.B., M.A., Lawrence College.
- MARTHA LOSS —
Supervisor, Rural
Demonstration School
B.S., Penn State College; Ph.M., University of Wisconsin.
- ROBERT S. LEWIS — Geography
B.A., B.S., M.A., University of Wisconsin.
- ARTHUR S. LYNES — Biology
B.S., Kansas State Teachers College; M.S., Ph.D., University of Iowa.
- SYBLE E. MASON — Assistant Librarian
B.E., Central State Teachers College; Diploma, University of Wisconsin Library School; M.S., University of Illinois.
- BEATRICE MERKOFER —
Education, Mathematics
B.S., in Ed., Ohio State University; M.S., Ohio State University.
- HELEN MESTON — Home Economics
B.S., Doane College; B.S., M.A., Columbia University.
- PETER J. MICHELSEN —
Director of Music
Graduate of the Seminary, the Military School of Music, and the Music Conservatory of Oslo, Norway; Graduate of the Vander-Cook School of Music, Chicago.
- MIRIAM MOSER — Physical Education
B.S., La Crosse State Teachers College.
- JOSEPH MOTT —
Philosophy, Psychology
B.S., State Teachers College, Kirksville, Missouri.
- IRVING F. MOZUCH —
Rural Demonstration
School Supervisor
B.S., B.E., Central State Teachers College.
- O. FLOYD NIXON — Mathematics
A.B., Indiana University; M.A., University of Chicago; Ph.D., Ohio State University.
- ELIZABETH PFIFFNER —
Dean of Women, History
Graduate, Stevens Point State Normal School; B.E., Central State Teachers College; Ph.M., University of Wisconsin.
- BURTON R. PIERCE —
Principal, Junior High School
Graduate, Stevens Point State Normal School; Ph.B., Ripon College; M.A., University of Iowa.
- EDGAR F. PIERSON — Biology
B.S., Iowa Wesleyan College; M.S., Ph.D., University of Iowa.
- HALE F. QUANDT — Director, Inter-Collegiate Athletics;
Physical Education
Graduate, River Falls State Normal School; B.A., University of Iowa; M.A., University of Michigan.



This seal is being used by Hardware Mutuals to commemorate the 200th anniversary of mutual insurance which is being celebrated this year.

Take a Tip From Ben Franklin

200 years ago on March 25, 1752, Benjamin Franklin pioneered an idea. It resulted in the founding of the first successful mutual insurance company in America. Franklin, in fact, laid the cornerstone of mutual casualty and fire insurance which today is a multimillion dollar industry.

Graduation marks the beginning of a new phase in your career. Your future progress is dependent upon such characteristics as Benjamin Franklin's integrity and persistence . . . take a tip from him. May your efforts and ambitions be realized in a happy, worthwhile life!

Insurance for your AUTOMOBILE . . . HOME . . . BUSINESS

Hardware Mutuals

Stevens Point, Wisconsin • Offices Coast to Coast

AS NATIONALLY ADVERTISED



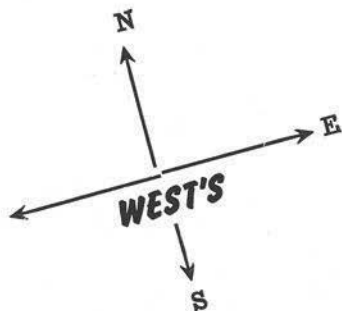
He: "My, you look lovely tonight."

She: "Why thanks, WELSBY'S did my dry cleaning just right."

WELSBY'S

446 Clark St.

Phone 688



Be like the rest,

Get dairy products at WEST'S.

Plover, Wis.

Shoes

Accessories



WILSHIRE SHOP

440 Main St.

Stevens Point



"Professional Prescription Service"

THE
 REXALL DRUG STORE
 IN
 STEVENS POINT

WESTENBERGER'S

"Across from the Postoffice"

Phone 27

**BADGER PAINT &
HARDWARE
STORES, INC.**



STEVENS POINT, WIS.

317 Main St.

Phone 790

BELKE

Lumber & Mfg. Co.

Cabinet work

Millwork

Insulation

Paint

Roofing

Lumber

Glass

247 N. 2nd St.

Phone 1304

Stevens Point



ALL BERGS say that

ALTENBURG'S DAIRY

products are the best.

"We Freeze to Please"



HANNON'S DRUGS

- Prescriptions
- Cosmetics
- Luncheons
- Drugs
- Gifts
- Photographic Equipment

"Across from the Fox Theater"

COMPLIMENTS of

KOSTKA FURS

Stevens Point — Wis. Rapids



FURNITURE CORPORATION

Stevens Point, Wisconsin

Fine Furniture For Children Since 1897

KARP'S BOOTERY

"The store of personalized
shoe fitting"

The complete family
shoe store . . .

KARP'S BOOTERY

"On Stevens Point's famous Market Square"

And what better companion could anyone have than a handy picnic cooler filled with delicious Coca-Cola. It's a sure way to travel refreshed.



Compliments of

GOODMAN'S

- Watch repairing
- Pearl restringing

JEWELERS

418 Main Street

STEVENS POINT, WIS.



Even the wise old owl knows
That the CONTINENTAL is the place for
Clothes.

GLOVES, SCARFS and HOSIERY too:
The dollars you pay are just a few.

THE CONTINENTAL CLOTHING COMPANY

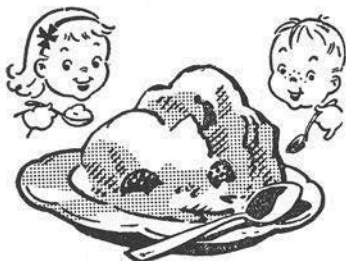
"Across from the Fox Theatre"

THE GAMBLE STORE

408 Main St.

Phone 1548

Children . . .



and grown-ups, enjoy smooth FISHER'S ice-cream as well as their other fine dairy products.

FISHER'S DAIRY

122 N. 2nd St.

Phone 1902

EMMONS

Stationery and Office Supply Co.



Distributors of the

L. C. SMITH — CORONA

PORTABLE TYPEWRITER

"The World's Fastest Portable Typewriter"

CONGRATULATIONS CLASS OF 1952



SORENSEN'S FLOWER SHOP



See Your Friendly Florist
for HOME GROWN FLOWERS



MAD
AT HIGH PRICES?
You'll save money at

PENNEY'S

... PENNEY CO., INC.

BIG SHOE STORE

Your headquarters for
famous nationally advertised
footwear: Sport Pals, Friskies,
Lolos, Dreensteps.

419 Main St.

Stevens Point

"CENTRAL WISCONSIN'S LARGEST
UNDERSELLING SHOE STORE"

SOUTH SIDE SPORT SHOP

The best sportsmen do confide,
that they stop at the sport shop
on the south side.



813 Strongs Ave.

Phone 2156

BOSTON

Furniture and Funeral Service

We feature:

Joerns Simmons

Lullabye Kroehler

Philco Thayer

Lee's floor coverings

430 Main St.

Phone 250

NIGBOR FURS

"Wisconsin's Largest Furriers"



- EAU CLAIRE
- MILWAUKEE
- GREEN BAY
- STEVENS POINT
- MANITOWOC
- MADISON
- WAUSAU
- BERLIN



WISCONSIN PUBLIC SERVICE CORPORATION

THANK YOU

for the business you have
given us!

And cordial greetings
from the people at

PARKINSON'S

Clothes for Men



For the finest tasting
meats, poultry, sea food and
sausages shop at

**PEICKERT'S
MEAT MARKET**

Phone 68

For

 **Normington's**
Gentle . . . thorough
C L E A N I N G

 **Normington's**
Gentle . . . thorough
L A U N D E R I N G

Phone 380

COMPLIMENTS
OF THE
SPORT SHOP

"Say it with Flowers"

**J. A. WALTER
FLORIST**



Plants and cut flower arrangements
with distinction

110 N. Michigan Ave.

Phone 1629

"Better From Vetter"

For



Phone 87

**THE
VETTER MANUFACTURING COMPANY**

Home of Old Cabin

COAL

**BREITENSTEIN
COMPANY**

Roofing, Siding, Paint, Plaster,
Cement, Nails, Farm Machinery,
Feed, Coal and Coke,
Fire Tender Stokers

217 Clark St.

Phone 57

**DELZELL OIL
COMPANY**

Distributors of PHILLIPS 66 Gasoline

**CITIZENS NATIONAL
BANK**

**MOLAND BROS.
TRUCKING COMPANY**

"Keep Your Freight Rollin'

Ship via Moland"

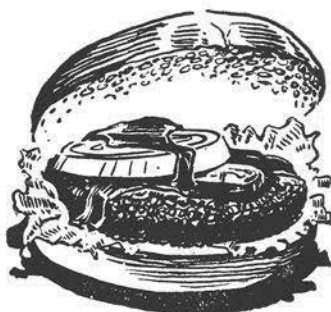
425 Main St.

Phone 77

Phone 252

**FOX
AND
LYRIC
THEATERS**

Your Friendly Fox
theatres extend their
congratulations to the
graduating class
of 1952



**JOE'S
ALL MODERN
YELLOWSTONE**

HOTEL & CABINS

1 Mile East of the College on 10

Want Ads
in the

STEVENS POINT DAILY JOURNAL

Are so easy to order!

SIMPLY CALL 2000

Ask for Miss Adtaker

★ Special Low Subscription rates for all Servicemen and Servicewomen.

★ Fine Printing

Newspaper Office — 114 North Third
(Open during noon hour)

Printing Department — 116 North Third
(Closed during noon hour and all day Saturday)

The Quality Store



WOMEN'S, MISSES and JUNIORS
wearing apparel.



X-RAY FITTING

SHIPPY SHOE STORE

BROCK ENGRAVING CO.



Madison, Wisconsin

Extends congratulations
to the graduating class
of 1952

*Congratulations
graduating
Seniors*

●
**TAYLOR'S
DRUG STORES**

111 Strongs Ave. 752 Church St.
PHONE 3 PHONE 49



PHILLIP'S STUDIO

**CAMPBELL'S
DEPT. STORE**

—
Elevator Service
and
Air Conditioned

**For Graduation Photos
(Or Any Other Type of Picture)
We're the ones to See!**

Wide Selection of Proofs, Prompt Service,
Reasonable Prices, Satisfaction Guaranteed

Bartosz & Clark
PHOTOGRAPHERS

414 Main St.

Phone 2507

**STEVENS POINT
BEVERAGE COMPANY**



Bottlers of
— Point Special Beer —
Orange Crush, Lemmy and
other High Grade Soft Drinks

Phone 61



STOP!

If you need Carpeting,
Linoleum, Window Shades,
Venetian Blinds. Come in and
see the outstanding quality and
Workmanship that we can offer you.

**THE HOME
FURNISHINGS INC.**

121 North Second Street

Member Federal Reserve and F.D.I.C.

After graduation you will be on your own and earning money. What would be better than a savings account at the First National? Even though the amount with which you open your account may be small, it is an important step toward building for your future.

No matter where you locate, you can carry your account with us by mail. We have many customers who do not live here but still carry their accounts with us.

THE FIRST NATIONAL BANK

Stevens Point

Capital & Surplus \$400,000.

Resources over \$8 million

ENJOY THE BEST



SCRIBNERS DAIRY

1 mile East on 10

College Eat Shop

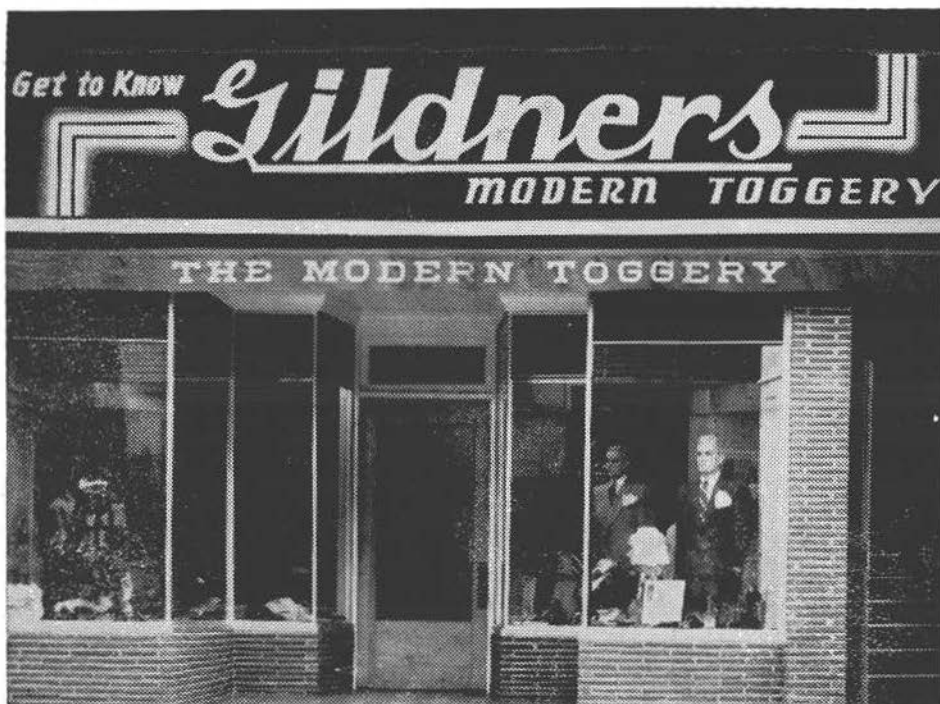


The Finest in Town

Dinners Short Orders

Fountain Service

Across Main from Nelson Hall





Best Wishes
to
those
who
are
graduating

**THE
COLLEGE COUNTER**

LOOK YOUR
BEST



Shop For Your
Complete Wardrobe
At

MONTGOMERY WARD

DON WARNER STUDIO



FOR FINE PHOTOGRAPHY

Across From the College

Kelvinators

Radios

Everything in hardware

Maytag washers

Bicycles

Sensible prices

HARDWARE

"On the Famous Market Square"

Otterlee's

Jewelry - Gifts

Expert Jewelry

&

Watch Repairing

442 Main St.

Tel. 2031

STEVENS POINT, WIS.

WHITING-PLOVER PAPER CO.

Stevens Point, Wis.

Manufacturers of

Permanized Papers

and

Keebord Papers

It is a pleasure to work with the Iris Staff, planning the details that are necessary to produce a better "IRIS". We at

NATIONAL BOOKBINDING CO.

located in Stevens Point, are proud that we can offer the most comprehensive cover and bindery service in the midwest. The large increase in the number of yearbooks we bind each year is a hearty endorsement of the fine craftsmanship, fair dealing and dependable service.

CAMPUS CAFE

Sandwiches

Short Orders

Breakfast

Fountain

Home of the Student

Owned — Student Operated

Eating Co-op.

Featuring LOW Rate Meals.



GRAHAM-LANE

MUSIC SHOP

Strong's Ave.

Phone 442

FRANK'S HARDWARE

"Just off the famous Public Square"

117 No. 2nd St.

Phone 2230

**SLICKER'S
TEXACO SERVICE**

216 No. 2nd St.

Phone 583

HELEN FIEREK

Millinery and Accessories

119 Strong's Ave.

Phone 1605-J

LEROY'S

Ladies Ready To Wear

205 Strong's Ave.

Phone 787

TUCKER

Studio and Camera Shop

110 Strong's Ave.

Phone 407

SPOT RESTAURANT

Alex Morton, Prop.

414 Main St.

Phone 95

ARENBERG'S

Fashionable Jewelry

Since 1884

447 Main St.

Stevens Point

POINT CAFE

Strong's Ave.

SURPLUS STORE

Clothing for Men & Boys

On the famous Market Square

POLLY FROCKS

Women's Apparel

416 Main St.

THE COLLEGE SHOPEverything for the
Well-Dressed Co-ed.

326 Main St.

Autographs

