

57
IRIS



IRIS

1953



WISCONSIN STATE COLLEGE
STEVENS POINT, WISCONSIN



IRIS STAFF

Eunice Bauer, Editor
Patricia Derge, Assistant Editor
James Mulady, Business Manager
Marguerite Smith, Advertising Manager

Copy: Arline Meister, Mary Ann Smith, Jo Daniels, Jo Burdorf, Gerald Baerenwald

Layout: Diane Seif, Ken Kritz

Identification: Mary Jo Reznichak, Marlene Hartleb

Art: Judy Clayton, Barbara Hanson

Sports: Jack Popeck

Advertising: Irv Wagner

Typists: Alice Tauchen, Henry Drechsler

Picture Schedulers: Joy Lane, Joyce Zellinger

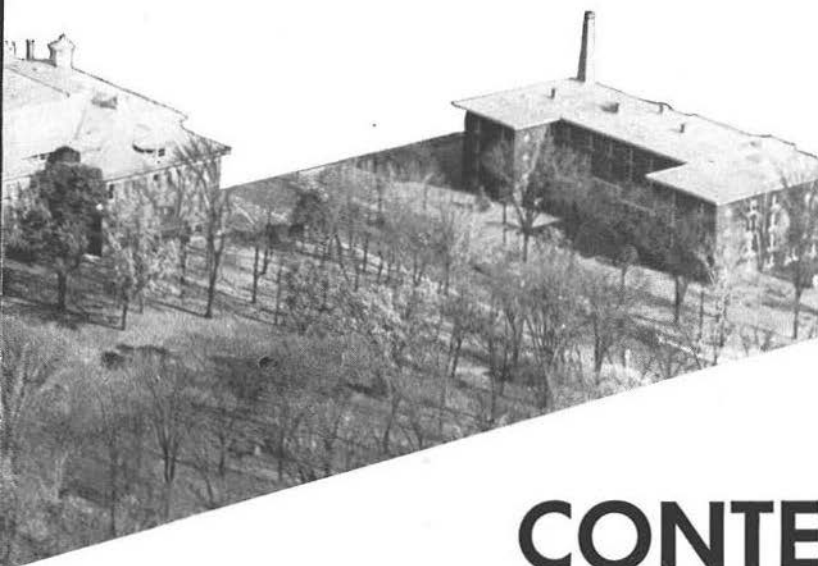
Photographers: John Bruha, Ray Harmon, Vernon Stogbauer

Sports Photographer: Florian Klasinski

Editorial and Business Adviser: Burdette Eagon

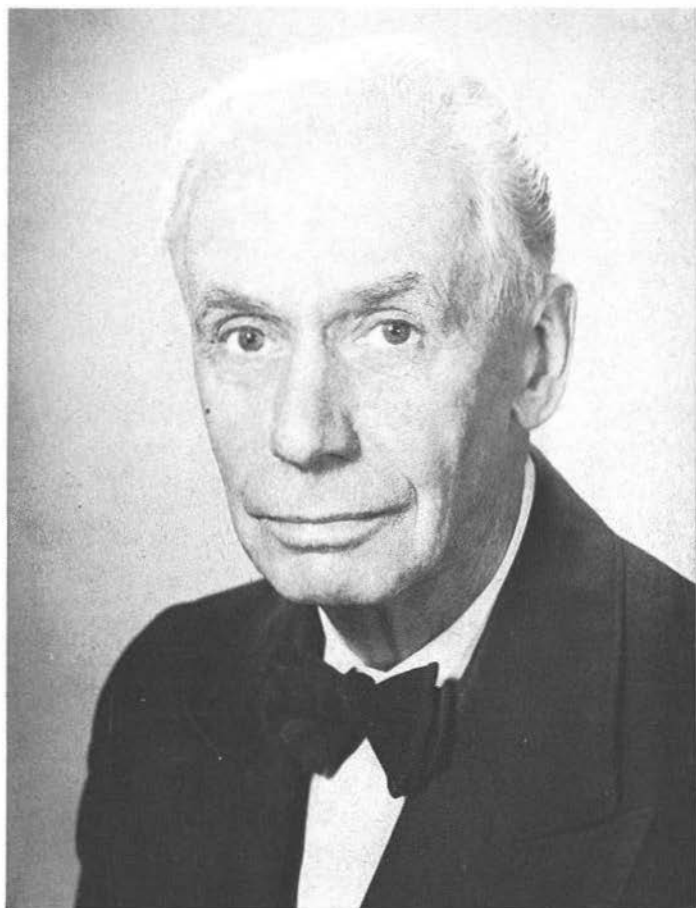
Photographic Adviser: Raymond Specht

Art Adviser: Edna Carlsten



CONTENTS

Classes	Page 7
Organizations	
Professional	Page 40
Honorary	Page 46
Greek	Page 49
Religious	Page 63
Activities	Page 67
Sports	Page 93
Faculty	Page 109
Index	Page 121



IN MEMORIAM

We at C.S.C. will not soon forget the kindly gentleman, Mr. Mott, to whose memory we fondly dedicate this Iris.

He will always be endeared to his students and associates as the tall white haired teacher of educational psychology, philosophy, and English. Mr. Mott held the enviable record of never having been absent from class because of illness until last spring. He was a popular speaker for men's groups and civic organizations in this area.

His scholarliness, kindly manner, frequent words of encouragement and dry humor will long be remembered by his students.



IN MEMORIAM

We, the students at Central State College, dedicate this nineteen fifty three Iris to the memory of Dr. Harold Tolo.

His little office on second floor was more than just an office, for few passed by without stopping in for some friendly advice or just a brief chat with "Doc." His laughing manner and deep-toned voice ringing through the halls were a welcome sound to all; newcomers soon knew he was a friend. Dr. Tolo's classes, conducted in the most home-like atmosphere, were no cinch; but who did not love the heated discussions there, whether it be the history of yesterday or the politics of today?

Yes, we shall always remember "Doc."



FORWARD

To Our Readers:

This year we have furnished a guide to take you through the pages of the Iris. You will find that your guide is a very familiar symbol of our college. We have taken the liberty of naming him Stevie, the Pointer.

Stevie will take you on a pictorial tour showing the events of the past year at Central State. He is stationed at appropriate places to help you find pictures of various phases of college life.

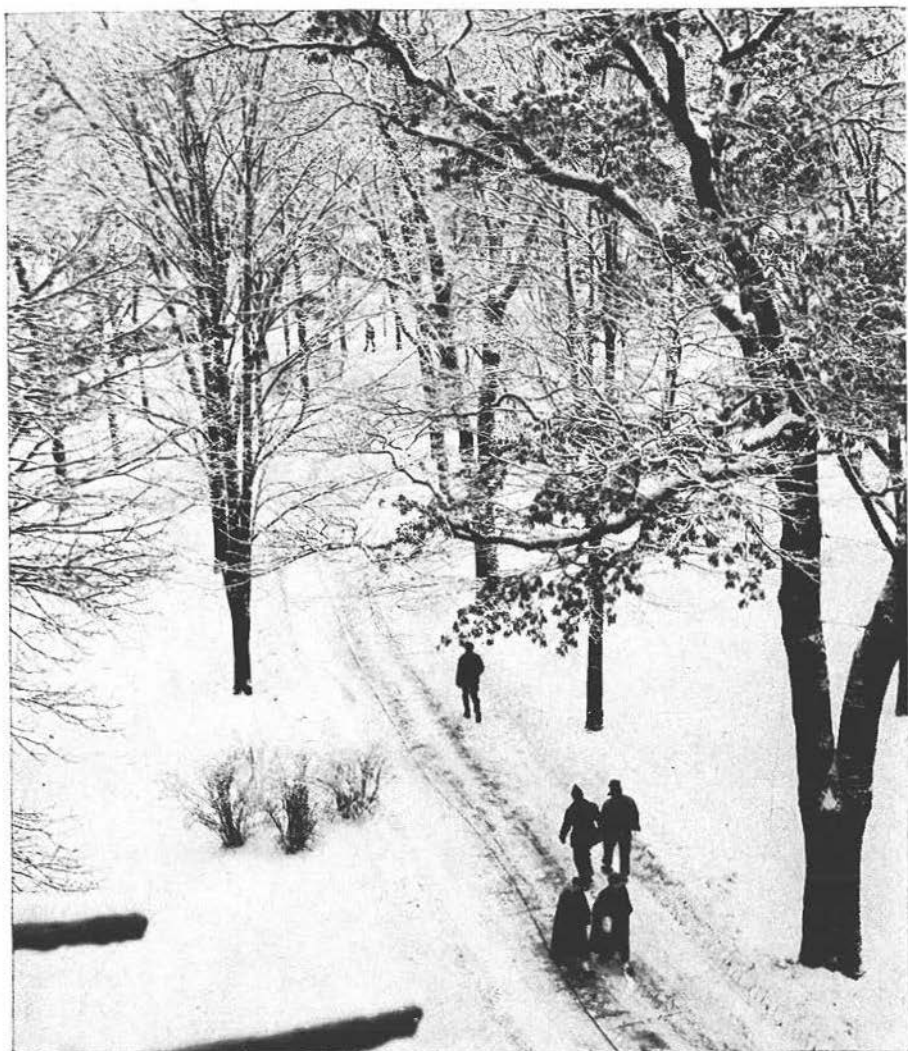
The Iris staff hopes you will enjoy your tour with Stevie and spend many happy hours recalling past memories.

Eunice Bauer, Editor

CLASSES



SENIORS



After four years of fun, friendships, and fervent studying, the class of '53, under the leadership of Henry Drechsler, president; Robert Gruling, vice-president; Mary Lund, secretary; Eleanor Curtis, treasurer; Bill Clayton, student council representative; and Miss Isaacson and Mr. Crow, faculty advisors; is ready to set out on the long last walk from the warm shelter of C.S.C. We and they are truly sorry to watch these happy years come to a close; but together we look forward eagerly to the new paths, new fields which lie before them.

Happy traveling, seniors; and know that you never walk alone, for we at C.S.C. are solidly behind you!

PRIMARY



ABRAHAMSON, SYLVIA

Tigerton
 Tau Gamma Beta, Girls' Glee Club, Mixed Chorus, Alpha Kappa Rho, L. S. A., Primary Council, W. S. G. A., Intersorority Council.



THOMPSON, DOROTHY

Curtiss
 Interfaith Council, L. S. A., Primary Council, Girls' Glee Club, Mixed Chorus, Tau Gamma Beta, Radio Workshop.



GOSSAGE, MARILYN

Stevens Point
 Minors: History, English. Newman Club, Primary Council, Y. G. O. P., Iris, W. S. G. A.



HOFMAN, VIVIAN

Wabeno
 Newman Club, Primary Council, Psi Beta Psi, Pan Hellenic Council, Dorm Council, Intersorority Council.



LEAHY, KATHLEEN

Stevens Point
 Newman Club, Primary Council, Tau Gamma Beta, W. S. G. A.



PAUTZ, NANCY

Wausau
 Wesley, Psi Beta Psi, Intersorority Council, Primary Council, Pan Hellenic Council, Mixed Chorus, Girls' Glee Club, Pointer, Dorm Council.

PRIMARY



POAD, PATRICIA
Plainfield
Primary Council.



ROTHMAN, DEJON
Wittenberg
Primary Council, Wesley, Girl
Scouts, Y. W. C. A., Mixed
Chorus.



TAUCHEN, ALICE
Dorchester
Primary Council, Girls' Glee
Club, Y. W. C. A., Pointer, Iris,
Trigon.



BARRETT, PATRICIA
Stevens Point
Primary Council, Y. G. O. P.,
W. S. G. A., Mixed Chorus, L.
S. A.



SARBACKER, JEAN
Portage
Omega Mu Chi, Primary Council.



SCHUELKE, MARIANNE
Wausau
Primary Council, Newman Club,
Mixed Chorus, Y. G. O. P.

PRIMARY



MOLL, JOYCE

Junction City
Primary Council, Gamma Delta,
Pan Hellenic Council, Mixed
Chorus, Tau Gamma Beta, Dorm
Council, W. S. G. A., Inter-
sorority Council.



MALCHOW, NANCY

Stevens Point
Primary Council, Wayland Club,
W. S. G. A.



ISBERNER, HELEN

Wausau
Primary Council, W. R. A., Psi
Beta Psi, Wesley, Y. W. C. A.,
Interfaith Council, Dorm Council.



KEARNS, ROSE

Dalton
Newman Club, Primary Council,
Tau Gamma Beta, W. S. G. A.



NELSON, BARBARA

Waupaca
Minor: Music. Primary Council,
Band, Mixed Chorus, Girls' Glee
Club, Alpha Kappa Rho, Tau
Gamma Beta, L. S. A., Dorm
Council, Interfaith Council, Pan
Hellenic Council, Intersorority
Council.



ALTENBURG, ARLENE

Stevens Point
Primary Council, W. R. A., Y.
W. C. A., Newman Club.

PRIMARY



MLADA, MARGARET
Marshfield
Primary Council, Y. W. C. A.,
Wesley, Girls' Glee Club.



PAYNE, FLORENCE
Stevens Point
Minors: Geography, English.
Primary Council, Sigma Tau
Delta, Newman Club.



LUND, MARY
Eagle River
Student Council, Primary Council,
Radio Workshop, Tau Gamma
Beta, Pan Hellenic Council,
College Theatre, Senior Class
Secretary, Pointer, Wesley.



GUZMAN, BEVERLY
Stevens Point
Minor: Music. Primary Council,
Psi Beta Psi, Alpha Kappa Rho,
Mixed Chorus, Band, L. S. A.



BROEREN, ROBERTA
Thorp
Newman Club, W. R. A., Girls'
Glee Club.



WEISBROT, BARBARA
Nelsonville
Primary Council, W. R. A., Tau
Gamma Beta, Newman Club.

INTERMEDIATE and UPPER ELEMENTARY



ZASTROW, MARLENE
Wausau
Psi Beta Psi, Gamma Delta,
Round Table, F. T. A.



PURCHATZKE, BRYAN
Weyauwega
Football, Basketball, Round
Table, "S" Club, Intramurals.



HEUER, EDWIN JR.
Wild Rose
Wesley, Sigma Theta Epsilon,
Round Table, F. T. A., Men's
Glee Club.



DERGE, PATRICIA
Marshfield
Newman Club, Round Table,
Pointer, Iris, Assistant Editor.



PARKIN, ARLON
Hancock
Men's Glee Club, Round Table,
Bowling, Intramurals, Y. G. O. P.



BAUER, EUNICE
Wausau
Iris, Editor, Gamma Delta, Round
Table, Y. W. C. A., F. T. A.,
Girl Scouts .

INTERMEDIATE and UPPER ELEMENTARY



KORN, ELMO
Chippewa Falls
Young Democrats, Newman Club,
Round Table, F. T. A., Phi Sigma
Epsilon.



KORN, HARRIET
Chippewa Falls
Round Table.



ROBINSON, CHARLES
Wisconsin Rapids
Minor: Spanish. Pointer, Wesley,
Sigma Theta Epsilon, College
Theatre, Round Table, Men's
Glee Club, F. T. A.



KUSSMAN, RICHARD
Amherst
Chi Delta Rho, Alpha Gamma,
Radio Round Table, Radio
Workshop, Men's Glee Club,
Y. G. O. P., Track, Intramurals,
Round Table, F. T. A.



MEISTER, ARLINE
Clintonville
Gamma Delta, Psi Beta Psi,
Round Table, Girls' Glee Club,
Mixed Chorus, Iris, Pointer,
Sophomore Class Secretary,
Dorm Council, F. T. A.



BENZ, DON
Butternut
Round Table, Intramurals, F. T.
A.

INTERMEDIATE and UPPER ELEMENTARY



CLAYTON, WILLIAM

Baraboo
Chi Delta Rho, Men's Glee Club,
Trigon, "S" Club, Y. G. O. P.,
Alpha Gamma, Round Table, Pan
Hellenic Council, Student Council,
Athletic Manager, Treasurer
Junior Class, Dorm Council, In-
tramurals, F. T. A.



GRUEN, JANICE

Mosinee
Tau Gamma Beta, Round Table,
Alpha Kappa Rho, Wesley, In-
terfaith Council, W. S. G. A.,
Mixed Chorus, Girls' Glee Club,
Band.



KRISTIANSON, ROBERT

Beloit
Round Table, L. S. A., F. T. A.



BOGACZYK, STEVE

Stevens Point
Phi Sigma Epsilon, Round Table.



RAATHS, ARDIS

Pulaski
Gamma Delta, Omega Mu Chi,
Pointer, Mixed Chorus, Round
Table, F. T. A.



FACKLAM, EDMUND

Spencer
Round Table, F. T. A.

INTERMEDIATE and UPPER ELEMENTARY



POLZIN, JACK

Clintonville
Alpha Gamma, Mixed Chorus,
Round Table, Y. G. O. P., Golf,
Intramurals, F. T. A.



ZIEBARTH, BEVERLY

Green Bay
Girls' Glee Club, Gamma Delta,
L. S. A., Psi Beta Psi, Round
Table, Intersorority Council, Pan
Hellenic Council, F. T. A.



MAYER, DONALD

Medford
Round Table, Radio Work Shop.



SHERFINSKI, BELVINA

Wausau
Round Table, Newman Club,
W. S. G. A.



SUMMERS, JOAN

Rhineland
Round Table, Newman Club,
Pointer.



CZERNIEWSKI, JOAN

Stevens Point
Newman Club, Round Table,
Pointer.

SECONDARY



PINKERTON, JOYCE

Stevens Point
Wesley, Round Table, Omega
Mu Chi.



PIERRE, WINNIFRED

Shiocton
Major: Home Economics. Minors:
Speech, History. Newman Club,
Home Economics Club, Y. G. O.
P., Psi Beta Psi, College Theater,
Radio Workshop.



ALLEN, KATHRYN

Shiocton
Major: Home Economics. Minors:
History, General Science. Psi
Beta Psi, Home Economics Club,
Newman Club, Y. G. O. P.



FRITSCH, CLARENCE

Wabeno
Major: Biology, Minors: English,
Geography. Newman Club, Al-
pha Gamma, F. T. A.



ELSEN, ANNA

Nekoosa
Major: Home Economics. Minors:
Art, History. Home Economics
Club, Newman Club, W. S. G. A.



HOFFMAN, FRANK

Tigerton
Majors: Science, Mathematics.
Minor: History. Gamma Delta,
Sigma Zeta, Chi Delta Rho.

SECONDARY



FLINT, ROBERT

Stoughton

Major: Geography. Alpha Gamma, Chi Delta Rho, Y. G. O. P., Homecoming Chairman, Golf, Pan-Hellenic Council, Intramurals, Student Council, Sophomore Class President.



STANKEVICH, KATHRYN

Armstrong Creek

Major: Home Economics. Minors: English, Biology. Newman Club, Home Economics Club.



DOUGLAS, KELLY

Ashland

Major: Biology. Minor: Physical Education. Chi Delta Rho, "S" Club, Sigma Zeta, Football, Basketball, Tennis, Intramurals, Sigma Theta Epsilon, Wesley.



JARNICK, PHYLLIS

Waupaca

Major: Home Economics. Minors: Speech, General Science. Sigma Zeta, W. S. G. A., Wesley, Home Economics Club, Tau Gamma Beta.



JANSEN, RICHARD

Marathon

Majors: Conservation, Biology. Minor: Chemistry. A. K. L., Newman Club. Y. G. O. P.



NEWHALL, DOLORES

Hancock

Major: Home Economics. Minors: Biology, Art. Girls' Glee Club, Wesley, Home Economics Club, Tau Gamma Beta, Intersorority Council.

SECONDARY



SANDBERG, JOHN

Mountain

Major: Biology. Minors: Chemistry, Physical Education. Chi Delta Rho, Forum, Basketball, Football, Track, Intramurals.



CLARK, GLENNA

Vesper

Major: Home Economics. Minors: English, General Science. Home Economics Club, Wesley, W. R. A., Sigma Zeta, W. S. G. A., Y. G. O. P., Student Council, Tau Gamma Beta, Forum.



ANDREWS, OLIVER

Plymouth

Major: Chemistry. Minors: Biology, Conservation. "S" Club, Football, Track, Sigma Zeta, Intramurals, Forum.



TEETZEN, RUTH

Shawano

Major: Home Economics. Minors: English, Biology. Psi Beta Psi, Home Economics Club, Gamma Delta, Y. W. C. A., Forum.



MALLOW, JOHN

Wabeno

Major: Geography. Minors: Social Studies, History. Chi Delta Rho, Sigma Phi Epsilon, Alpha Gamma, Intramurals, Wesley, Forum, Pointer.



PIFFNER, MARY

Stevens Point

Major: Home Economics. Minors: General Science, English. Newman Club, Tau Gamma Beta, Home Economics Club, W. S. G. A., Sigma Zeta, Girls' Glee Club, Mixed Chorus, Intersorority Council.

SECONDARY



GILBERT, MARLYN

Kaukauna

Major: History. Minors: Geography, Physical Education. Student Council, Forum, Chi Delta Rho, Alpha Gamma, "S" Club, Football, Wrestling, Junior Class Vice President.



SCHMEECKLE, WILMA

Stevens Point

Major: Home Economics. Minors: Biology, English. Tau Gamma Beta, Home Economics Club, Sigma Zeta.



WESLEY, FRANK

Stevens Point

Band, Men's Glee Club, Phi Sigma Epsilon, Mixed Chorus, Alpha Kappa Rho.



RHODE, RANSOM

Oconto

Major: Conservation. Minors: Biology, Chemistry. A. K. L., Golf, "S" Club, College Theater.



CONNOR, SARAH

Auburndale

Major: English. Minors: Speech, History. Alpha Psi Omega, Band, Mixed Chorus, Omega Mu Chi, Sigma Tau Delta, Radio Workshop, College Theater, Intersorority Council, Forum.



WIERSMA, WILLIAM

Friesland

Major: Mathematics. Minors: Chemistry, Physics. Sigma Zeta, Intramurals.

SECONDARY



BRUHA, JOHN

Weyauwega
 Majors: Biology, Mathematics.
 Minor: Chemistry. Chi Delta
 Rho, Sigma Phi Epsilon, Gamma
 Delta, Sigma Zeta, Men's Glee
 Club, Iris, Pointer, Forum, Intra-
 murals.



BRUHA, RICHARD

Weyauwega
 Major: Biology. Minors: Mathe-
 matics, Chemistry. Chi Delta Rho,
 Gamma Delta, Men's Glee Club,
 Forum, Rifle Club, Intramurals,
 Iris, Pointer.



DEHLINGER, ROBERT

Stevens Point
 Major: English, Minors: Physical
 Education, History. Football, Phi
 Sigma Epsilon, "S" Club.



BESTE, ROBERT

Eveleth, Minnesota
 Major: Mathematics. Minors:
 Physics, Social Science. Chi Delta
 Rho, Sigma Zeta, Intramurals.



PAPKE, ROSS

Portage
 Major: History. Minors: Geo-
 graphy, Social Studies. Trigon,
 Men's Glee Club, Y. G. O. P.,
 Alpha Gamma, Forum, Tennis.



SOMMERS, RAY

Marshfield
 Major: Chemistry. Minors: Mathe-
 matics, Physics. Rifle Club,
 Newman Club, Sigma Zeta, Ten-
 nis.

SECONDARY



CABLE, VIRGINIA

Stevens Point

Major: Geography, English. Minors: History, French. Omega Mu Chi, Alpha Gamma, Sigma Tau Delta, Y. G. O. P.



LUND, TOM

Eau Claire

Major: English. Pointer, Golf, Y. G. O. P.



CURTIS, ELEANOR

Poynette

Major: Home Economics. Minors: Speech, General Science. Tau Gamma Beta, W. S. G. A., Sigma Zeta, Home Economics Club, Trigon, Student Union Board.



HARTLEB, MARLENE

Allenton

Major: Home Economics. Minors: Biology, History. Tau Gamma Beta, Home Economics Club, Sigma Zeta, Newman Club, Iris.



HUBBARD, GRACE

Stevens Point

Major: Geography. Minors: English, History.



SCHAEFFER, VERNA

Neillsville

Major: Home Economics. Minors: Biology, English. Home Economics Club, W. S. G. A., Y. W. C. A., Girls' Glee Club, Psi Beta Psi, Forum, Wesley, Interfaith Council.

SECONDARY



VISSERS, DONALD

Wittenberg

Major: Chemistry. Minors: Physics, Mathematics. Phi Sigma Epsilon, Intramurals, Newman Club, Sigma Zeta.



DAHM, DONA

Clintonville

Major: Home Economics. Minors: Art, Biology. Y. W. C. A., Home Economics Club, Trigon.



LASZEWSKI, ROY

Stevens Point

Major: History. Minors: Geography, Social Science. Phi Sigma Epsilon, Alpha Gamma.



PLAINSE, DELORES

Milwaukee

Major: Home Economics. Minors: Chemistry, English. Forum, Home Economics Club, Wesley.



POPECK, JOHN

Clintonville

Major: English. Minors: Speech, History. Football, Phi Sigma Epsilon, Sigma Tau Delta, Men's Glee Club, College Theater, Iris, Pointer.

RURAL



GRULING, ROBERT

Hamburg

Four Year Rural, Gamma Delta, Rural Life Club, Radio Workshop, Men's Glee Club, College Theater, Phi Sigma Epsilon, Student Council, Senior Class Vice President, F. T. A.



BRITTNACHER, MARY

Wrightstown

Four Year Rural, Tau Gamma Beta, Newman Club, Rural Life Club, W. R. A., College Theater, F. T. A., Girl Scouts, Girls' Glee Club, W. S. G. A.



DRECHSLER, HENRY

Pittsville

Four Year Rural, Men's Glee Club, Student Council, Newman Club, Y. G. O. P., College Theater, Phi Sigma Epsilon, Rural Life Club, Iris, Great Books, Radio Workshop, Senior Class President, F. T. A.



LEITNER, MARGARET

Minocqua

Four Year Rural, Rural Life Club, Girls' Glee Club, Newman Club.



HACKEL, NAOMI

Colby

Newman Club, W. R. A., Rural Life Club, Mixed Chorus, Y. G. O. P.



PALMER, DOROTHY

Neenah

Rural Life Club, Omega Mu Chi, W. S. G. A., Newman Club.

RURAL



HABECK, ROY

Shawano
Gamma Delta, Rural Life Club,
Radio Workshop, Pointer, Intra-
murals.



HAZELWOOD, PHYLLIS

Wausau
Rural Life Club, Girls' Glee Club,
Radio Workshop, Dorm Council,
W. S. G. A., Pointer, Newman
Club.



TEETZEN, WILLIS

Shawano
Rural Life Club, Gamma Delta,
Intramurals, Pointer.



JOHNSON, DOROTHY

Pulaski
Three Year Rural, Rural Life
Club, Tau Gamma Beta, College
Theater, Pointer, Wesley.



WALLNER, DOROTHY

Plainfield
Rural Life Club, Wesley.



WAGNER, JEAN

Grand Marsh
Rural Life Club, Tau Gamma
Beta, W. S. G. A., Newman
Club.

RURAL



MARCHEL, AURELLE
Stevens Point
Rural Life Club, Newman Club.



COLRUE, CLARA
Scandinavia
Rural Life Club, Girls' Glee Club,
Gamma Delta, Y. W. C. A.



BRONK, SALLY
Rosholt
Rural Life Club.



LENSMIRE, JOAN
Marathon
Rural Life Club, Newman Club.



SCHMITT, MARY
Edgar
Rural Life Club



SCHEELS, MARION
Mercer
Rural Life Club.

RURAL



CASKEY, PHYLLIS

Phelps
Rural Life Club, Y. W. C. A.,
Pointer, Y. G. O. P., Wesley.



JONES, JOYCE

Friendship
Rural Life Club, Gamma Delta,
Band, Y. W. C. A.



JONES, HELEN

Friendship
Rural Life Club, Y. W. C. A.,
Wesley, Iris.



LANG, MARCELLA

Rudolph
Rural Life Club, Newman Club.



REDA, FRANK

Winter
Four Year Rural. Minor: History.
Rural Life Club, Y. G. O. P.,
Rifle Club, Radio Workshop, Col-
lege Theater, Men's Glee Club,
Intramurals, Newman Club.

LETTERS and SCIENCE



ANDERSON, GENE

Stevens Point
Major: French, History. Phi Sigma Epsilon, Young Democrats.



KAMPENGA, AMY

Stevens Point
Major: Chemistry. Minor: Mathematics. Sigma Zeta, W. R. A., College Theater.



McMAHON, ROBERT

New Lisbon
Major: Conservation. Alpha Kappa Lambda, Phi Sigma Epsilon.



DeGUIRE, FRANK

Stevens Point
Major: History. Newman Club, Chi Delta Rho, "S" Club, Golf, Pointer, Alpha Gamma, Y. G. O. P., Men's Glee Club, Pan Hellenic Council, Intramurals.



EVES, PARR

Madison
Major: Conservation. Men's Glee Club, Freshman Class Treasurer Mixed Chorus, Intramurals, Tennis, Alpha Kappa Lambda, Bowling.



SPAULDING, WILLARD

Clintonville
Major: Conservation. Alpha Kappa Lambda, Rifle Club, Boy Scout Leadership.

LETTERS and SCIENCE



BRANDT, JACK

Marshfield

Major: Biology. Minors: Conservation, History. Track, Football, Sigma Zeta, "S" Club.



HALL, RICHARD

Poynette

Major: Conservation, History. Alpha Kappa Lambda, Intramurals, Rifle Club, Track.



KRUEGER, ROLAND

Mosinee

Major: History. Chi Delta Rho, Men's Glee Club, Pointer, Manager, Student Council, "S" Club, Alpha Gamma, Class Treasurer.



SALVIN, THEODORE

Stevens Point

Major: Mathematics. Minors: Chemistry, Physics. Band, Radio Workshop, Intramurals.



BARTOSZ, JERRY

Stevens Point

Major: History. Minor: French. Phi Sigma Epsilon, Alpha Gamma, Pan Hellenic Council, Young Democrats, Radio Workshop.



KONOPACKY, ROBERT

Stevens Point

Major: History. Alpha Gamma, Phi Sigma Epsilon.

LETTERS and SCIENCE



TATE, SUZANNE

Wisconsin Rapids
Major: History. Minors: English,
French, Social Studies. Y. G. O.
P., Gamma Delta.



MUNDT, RAY

Appleton
Major: Mathematics. Track, Foot-
ball, "S" Club, Young Democrats.



TOSER, RICHARD

Stevens Point
Major: Biology. Minor: Conser-
vation. Wesley, Orchestra, Band,
Sigma Theta Epsilon, Pointer,
Tennis.



VAN DE BOGERT, PHILIP

Delavan
Major: Conservation. Alpha Kap-
pa Lambda, Pointer.

SENIORS WITHOUT PICTURES

BERG, RICHARD
BREESE, ROBERT
DREW, DWAIN
FIETING, RUTH
HANSEN, CASMIRA
KOEHLER, MARY
MARROS, VIRGINIA
McCANDLESS, EDWARD
MORGAN, DAVID
MURRAY, CHARLES
NTEKAS, RUTH
PETERSON, CLEO
SCHMIDLER, FRANK
SCHMIDT, GERTRUDE
WILKINSON, JAMES

JUNIOR CLASS OF 1954

The class of '54 was led this year by Ray Anderson, president; Betty Crook, vice president; Jeannette Diver, secretary; Joyce Zellinger, treasurer; Fred Schadewald, student council representative; and Miss Bainter and Mr. Trytten, faculty advisors. Well on their way to the end of the college walk, our juniors walked with a quickened pace — both in their studies and their many activities, chief of which was the gala Junior Prom. Many in teacher training had their first opportunity to work with the children at the Training School. We know that they will live up to the highest traditions of C.S.C. seniors.



Row 1: Extrom, D., Cuff, J., Hanson, B., Figel, P., Weisen, P., Gerhard, M.
 Row 2: Gage, C., Reznichak, M., Christoffersen, R., Kuhnke, D., Chapman, J., Jersey, J., Corliss, C.
 Row 3: Rothamer, J., Meyer, R., Miller, W., Boettcher, J., Rindfleisch, D., Trotter, K., Freiberg, A., Anderson, R.

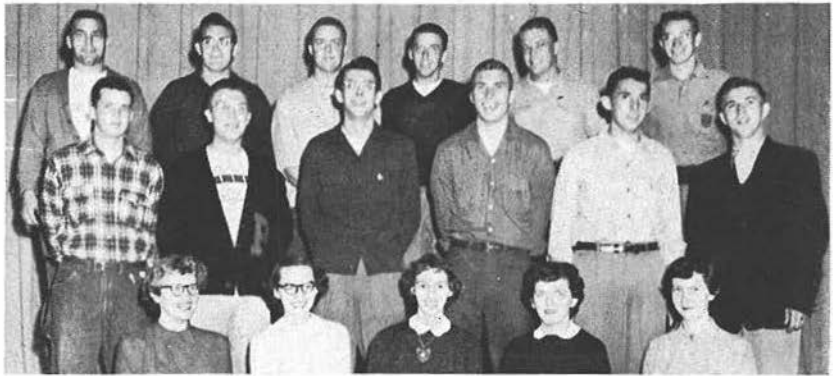


Row 1: Perlewitz, R., Poluika, B., Thompson, D., Miller, D., Schwentner, K., Raschka, M.
 Row 2: Wagner, M., Aronson, C., Tallmudge, R., Edmund, C., McIntee, R., Baumer, M., Panke, M., Moe, C.
 Row 3: Kott, D., Schrank, J., Anunson, G., Todd, D., Plank, E., Zukoski, H., Paulson, G., Wade, R.

JUNIORS



Row 1: Kusserow, B., Sutton, S., Dwer, J., Sonnenber, C., Crook, B., Benson, M.
Row 2: Baerenwald, J., Briscoe, L., Piatt, J., Mortenson, A., Hedquist, E., Langton, J.
Row 3: Ullsperger, R., Bigalke, G., Groessi, W., Wood, R., Paulson, R., Jacobus, R.



Row 1: Zellinger, J., Wysocki, J., Buhrdorf, J., Piehl, J., Lane, J.
Row 2: Olson, A., Kohls, W., Turner, G., Schommer, M., Bohler, W., Buchholz, W.
Row 3: Hermann, D., Marks, R., Piatt, J., Berkahn, J., Tanner, D., Jacobsen, E.

SOPHOMORE CLASS OF 1955

Their proving days over, the sophomores turned with eager stride to become an active force in the college program this year. Choosing for their officers, Leroy Purchatzke, president; John Miller, vice president; Judy Clayton, secretary; Marguerite Smith, treasurer; Gary Krueger, student council representative; and Miss Davis and Mr. Lewis, faculty advisors; the class of '55 made a fine record for themselves in every way.

SOPHOMORES



Row 1: Forth, C., Hiller, A., Borja, F., Lang, M., Malick, P., Forth, L.
 Row 2: Schroeder, J., Schultz, J., Butts, J., Bricco, V., Bullock, P., Langfeldt, L., McLees, D.,
 Gerner, D.
 Row 3: Holmgreen, J., Steffen, H., Sohr, C., Teetzen, W., Mrochek, J., Ellicson, D.,
 Fehrenbach, N.



Row 1: Marchel, A., Domack, E., Kabat, C., Collins, G., Lehmann, G., Giese, P.
 Row 2: Seif, D., Zerneke, J., Smith, M., Holt, C., Eide, E., Bahr, N., Held, B.
 Row 3: Hutter, I., Krouze, B., Cook, R., Votava, C., Ampe, B., Pfeiffer, J., Williams, J.,
 Burant, W.



Row 1: Hoefft, P., Stertz, L., Wilk, T., Rickfort, P., Suckow, G., Conover, K., Lehman, M.
 Row 2: Huettl, B., Charlesworth, R., Breyman, L., Mueller, C., Court, N., Bartelt, M.,
 Sheets, S., Kopperud, K.
 Row 3: Braun, A., Young, R., Sonntag, W., Purchatzke, L., Buckberger, C., Karau, M.,
 DeLaura, B., Rutherford, L.

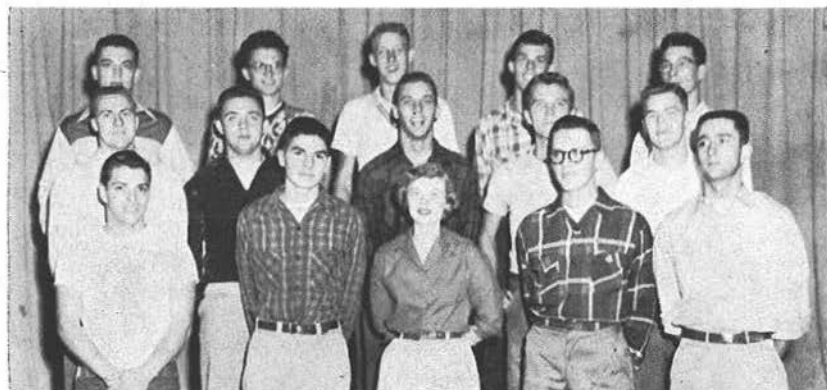
SOPHOMORES



Row 1: Gilbertson, D., Clayton, J., Polzin, R., Cook, J., Neale, J., Thompson, D.
 Row 2: Dietsche, G., Kmiotek, E., Martin, R., Swanson, H., Olsen, T., Hodell, R.
 Row 3: Miller, J., Ressler, R., Due, A., Silverman, D., Gosh, J., Hackbart, R., Hellner, A.



Row 1: Renden, B., Kucera, R., Kellerman, W., Thurston, I., Cram, L., Smith, J.
 Row 2: Newby, Y., Suehring, J., Nelson, M., Krueger, G., Kalepp, B., Gilbert, C., Smith, M.
 Row 3: Hunter, R., Ziemann, P., Chaffee, G., Koehn, E., Kritz, K., Wagner, I., Albers, T.



Row 1: Nomady, P., Butler, G., Albrightson, D., Carlson, S., Harmon, R.
 Row 2: Wislinsky, R., Schneider, R., Schweinler, W., Ebel, G., Marquard, R.
 Row 3: Helixon, P., Schneeberg, D., Boldig, J., Johnson, K., Netzel, R.

FRESHMAN CLASS OF 1956

There is one thing to be said for the nervous students who came up the front walk for the first time this September — they certainly were strong in numbers! Partly because of this, the freshmen were quick to form into an active and enthusiastic class, and even put on a highly successful Frosh Hop. Much of the credit goes also to their energetic leaders who were Homer Plumb, president; Carmen Breitenfeldt, vice president; Roberta Vaughn, secretary; Phil LaLeike, treasurer; Gene Kussman, student council representative; and Mrs. Pfiffner and Mr. Pierson, class advisors.



Row 1: Jaeger, M., Dombroske, I., Harder, C., Ekvall, B., Helsten, J., Cherney, L., Kennedy, J.
 Row 2: Helbach, H., Golz, D., Hales, J., Kussman, G., Lodzinski, J., Engebretsen, G., Krause, N.
 Row 3: Brychel, R., Lane, L., Higgins, T., Hudy, J., Kimber, B., Davidson, S., Jersey, D.
 Row 4: Hoppa, B., Huberty, C., LaLeike, P., Kubisiak, R., Liebav, G., Grow, E., Amburgy, J., Hofbauer, J.



Row 1: Javorek, M., Hvass, M., Glevé, N., Becker, J., Arndt, D., Holen, G., Buehler, L.
 Row 2: Hahn, B., Kraut, I., Collins, L., Christenson, J., Kilgas, D., Bras, A., Helland, E.
 Row 3: Mayek, J., Lemancik, E., Davis, R., Hanke, R., Buchholz, A., Hammersmith, R., Janke, R.
 Row 4: Laciná, W., Knudson, E., Buckberger, P., Driřka, J., Dutcher, H., Daye, B., Anderson, J.

FRESHMEN



Row 1: West, B., Maynard, S., Timm, B., Raddant, C., Vincent, P., Schieb, E., Thurston, J.
 Row 2: Isherwood, P., LeMere, M., John, C., Fabich, C., Schulz, G., Nelson, P., Scheelk, J., Gallistel, H.
 Row 3: Wymann, R., Ottmon, E., Munderloh, J., Mansour, N., Peplinski, R., McCamley, P., Page, D., Weber, R.



Row 1: Stasko, J., Stelchek, D., Weisbrot, A., Morgan, E., Czerniewski, R., Pease, T., McMillion, J.
 Row 2: Schuh, J., Richards, H., Van Stedum, J., Zieher, G., Michalski, C., Schreier, R., Sontag, N., Weber, E.
 Row 3: Skibicki, S., Schlack, A., Parker, V., Tolsted, D., Moon, H., Smith, D., Plumb, H., McMahon, T.



Row 1: Walrath, M., Needham, J., Wolfe, J., Murphy, B., Robinson, L., Schade, H., Walrath, D.
 Row 2: Thalacker, M., Van Ornum, J., Schellin, J., Smith, D., Zander, S., Pietz, A., Pomerening, F., Needham, I.
 Row 3: Nelson, D., McAuley, M., Ruhsam, W., Kryshak, G., Redding E., Smith, P., Redding, R., Peyovich, R.

FRESHMEN



Row 1: Thomander, M., Anderson, G., Jensen, D., Garfield, G., Krause, D., Achenreiner, S., Perrodin, S.
 Row 2: Falk, B., Foster, J., Koller, M., Knop, P., Daniel, J., Bradley, M., Schultz, P., Quall, S., Polzin, M.
 Row 3: Leith, D., Nelson, M., Kapitzke, D., Omernik, R., Pierce, L., Stogbauer, V., Jensen, D., Prohaska, E.



Row 1: Daanen, C., Mitchell, J., Tellock, L., Swendrzynski, M., Rose, S., Voelker, I., Whitford, J.
 Row 2: Vomastic, G., Miller, S., Rosin, L., Untiedt, J., Smit, J., Schuett, M., Miller, V., Zellinger, E.
 Row 3: Monroe, D., Geneske, A., Sautner, J., Pickert, J., McEwen, J., Wurtzel, J., Seefeldt, R., Garcia, P.



Row 1: Hilmer, D., Averill, H., Enstrom, R., Hilmer, R., Albert, E., Klaus, C., Billmeyer, R.
 Row 2: Folz, D., Anderson, L., Folz, G., Breitenfeldt, C., Anderson, M., Jolivet, B., Johnson, J.
 Row 3: Krohn, A., Bestul, H., Fox, E., Klose, P., Hurlbut, D., Crook, J., Brocker, F., Dopp, A.

FRESHMEN



Row 1: Gaylord, L., Bogsted, L., Moss, D., Bird, N., Zimmerman, B., Anklam, L., Allen, A.
 Row 2: Paulson, D., Foster, M., Hedin, C., Orgish, B., Sikyta, H., Sobczak, A., Podrez, L., Larson, R.
 Row 3: Farris, M., Frisch, J., Jackson, R., Braasch, R., Voight, J., Gruetzmacher, C., Weaver, E., Vreeland, K.



Row 1: Blaskey, G., Giese, S., Bowles, V., Vaughn, R., Golomski, A., Mozuch, K., Bloom, D.
 Row 2: Lord, A., Henschel, J., Doran, T., Schroeder, L., Paski, B., Hale, C., Axtell, R., Dzurick, L.
 Row 3: Waterman, C., Peabody, R., Schroeder, B., Winterfeldt, R., Jurgella, C., Soetebeer, J., Hager, R., Smith, H.



Row 1: Parmelee, D., Olson, C., Schramke, G., Noreika, M., Schwarze, G., Schemmer, L.
 Row 2: Wall, J., Moss, V., Reed, R., Roloff, K., Zeng, W., Morse, R., Nordlund, L.

ORGANIZATIONS



PROFESSIONAL ORGANIZATIONS

"Will the meeting please come to order" once a month these familiar words echo as the various professional organizations meet to study and discuss the pertinent problems in the field. Upon enrolling in the department of their choice all students are invited to become members of its professional organization. The organizations include: The Future Teachers of America, Round Table, Alpha Kappa Lambda, Primary Council, Forum, Home Economics Club, and The Rural Life Club.

FUTURE TEACHERS OF AMERICA



Row 1: Sherfinski, B., Extrom, D., Miss Ullman, Brittnacher, M.

Row 2: Raaths, A., Kusserow, B., Javorek, M., Meister, A., Raschka, M., Zastrow, M., Johnson, D., Aronson, C.

Row 3: Reznichak, M., Drechsler, H., Clayton, W., Kohls, W., Wade, R., Leitner, M., Bauer, E.

Row 4: Parkin, A., Facklam, E., Kristianson, R., Robinson, C., Polzin, J., Schrank, D., Heuer, E., Gruling, R., Mr. Eagon.

ROUND TABLE . . . INTERMEDIATE and UPPER ELEMENTARY



Row 1: Purchatzke, B., Raddant, M., Mayer, D., Robinson, C., Polzin, J., Bohler, W., Facklam, E.

Row 2: Rose, S., Zastrow, M., Meister, A., Raschka, M., Raaths, A., Thimke, J., Sherfinski, B.

Row 3: Bauer, E., Herrmann, D., Parkin, A., Benz, D., Kussman, R., Sonnenberg, S., Summers, J., Czerniewski, J., Suehring, J., Extrom, D.

ALPHA KAPPA LAMBDA . . . CONSERVATION



Row 1: Rhode, R., Wade, R., Cook, R., Hall, R., Jansen, R.

Row 2: Wilde, D., Dedeker, D., Kohls, W., Ziemann, P., Hutter, I., Netzel, R., Dietsche, G.

Row 3: Butler, G., Koehn, E., Breese, R., McMahon, R., Spaulding, W., Eves, P., Bassler, D., Drew, D., Wood, R.

PRIMARY COUNCIL



Row 1: Cram, L., Charlesworth, R., Miss Van Arsdale, Weisbrot, B., Thompson, D.
Row 2: Renden, B., John, C., Thompson, D., Huettl, B., Moll, J., Rothman, D.
Row 3: Payne, F., Lane, J., Hosft, P., Thalacker, M., Forth, L., Bloom, D., Forth, C., Hahn, B.
Row 4: Schultz, P., Quall, S., Polzin, M., Altenburg, A., Sheets, S., Suckow, G., Bahr, N., Newby, Y.
Row 5: Baumer, M., Panke, M., Hofman, V., Allen, D., Court, N., Eide, E., Schram, M.



Row 1: Malick, P., Figel, P., Mrs. Ravey, Sarbacher, J., Miss Smith.
Row 2: Perlewitz, R., Isberner, H., Sutton, S., Cuff, J., Kusserow, B., Reiland, T., Axtell, R.
Row 3: Smith, M., Rickel, P., Gerner, D., Smith, J., Gilbert, C., Mlada, M., Broeren, R., Abrahamson, S.
Row 4: Bird, N., Barrett, P., Malchow, N., Herman, N., Pautz, N., Lund, M., Kearns, R., Orgish, B.

RURAL LIFE CLUB



Row 1: Reda, F., Rosin, L., Tellock, L., Achenreiner, S., Caskey, P., Krause, D.
 Row 2: Hazelwood, P., Habeck, R., Jones, H., Jones, J., Hackel, N., Palmer, D.
 Row 3: Drechsler, H., Zander, S., Pietz, A., Wagner, J., Colrue, C.
 Row 4: Teetzen, W., Wilde, R., Trotter, K., Krohn, A., Miss Roach.



Row 1: Helland, E., Untiedt, J., Brittnacher, M., Bronk, S., Marchel, A., Lensmire, J.
 Row 2: Miss Winkler, Schuett, M., Johnson, D., Lang, M.
 Row 3: Vomastic, G., Daanen, C., Arndt, D., Hvass, M., Walrath, M., Walrath, D.
 Row 4: Gallistel, H., Thurston, J., Doran, T., Henschel, J., Needham, J., Robinson, L.,
 Pomerening, F.

HOME ECONOMICS CLUB

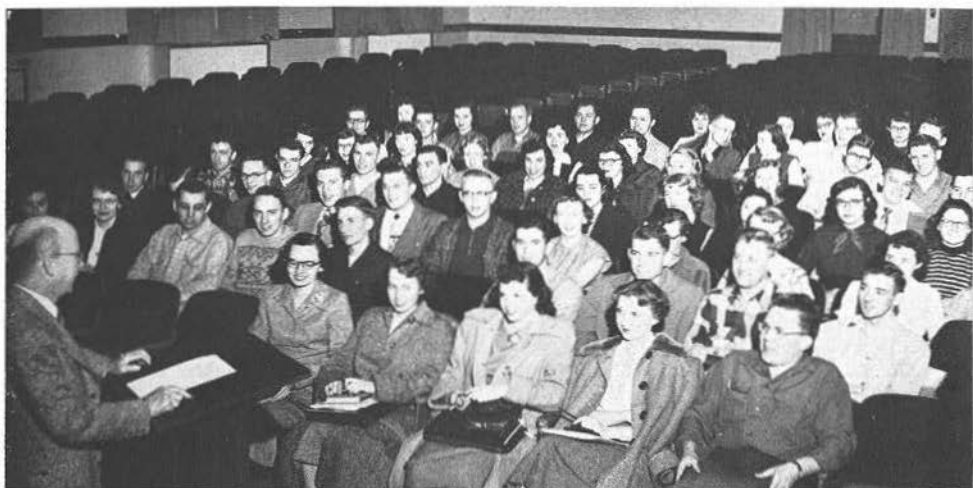


Row 1: Kopperud, K., Raddant, C., Miss Youmans, Polzin, R., Thurston, J., Hiller, A.
 Row 2: Giese, S., Kennedy, J., Bricco, V., Blaskey, G., Helbach, H., Conover, K.
 Row 3: Smith, M., Schroeder, L., Kucera, R., Schellin, J., Fabich, C., Anderson, G., Axtell, R.,
 Golz, D.
 Row 4: Rickfort, P., Kellerman, W., Kuhnke, D., Hedin, C., Francis, J., Nelson, P., Knop, P.,
 Zerneke, J., Van Ornum, J.



Row 1: Polivka, B., Wagner, M., McIntee, R., Miss Davis, Allen, K., Albrightson, D.
 Row 2: Pierre, W., Hartleb, M., Butts, J., Newhall, D., Jarnick, P., Schroeder, J.
 Row 3: Zellinger, E., Elsen, A., Stankevich, K., Dill, M., Breyman, L., Plainse, D.
 Row 4: Schaefer, V., Dahm, D., Clark, G., Curtis, E., Diver, J., Thompson, D., Teetzen, R.

FORUM . . . SECONDARY



Forum meeting

Life at the Training School



HONORARY ORGANIZATIONS

The reward for a job well done, and the stimulation to be a real leader in his chosen field — that is what the honorary organizations mean to the students of C.S.C.

Representing the departments of English, music, dramatics, social science and science, these organizations are open to those who can make the required grade point and who are invited to "pledge." This is not ordinary pledging but a trying test of their abilities in their major field. Most of the organizations are chapters of a national group, and all offer their members the chance to be part of a close-knit, enthusiastic group. Proudly we hail this year's members of our Honorary Organizations!

SIGMA TAU DELTA . . . ENGLISH



Row 1: Stankevich, K., Tate, S., Popeck, J., Connor, S., Polivka, B.

Row 2: Payne, F., Reznichak, M., Mr. Burroughs, Cable, V., Miss Smith.

Row 3: Boettcher, J., Scribner, S., Kubisiak, S., Kampenga, A., Wysocki, J., Ross, D.

ALPHA PSI OMEGA . . . DRAMATICS



Silverman, D., Miller, J., Kampenga, A., Pierre, W., Connor, S.

ALPHA GAMMA . . . SOCIAL SCIENCE



Row 1: Mortenson, A., Flint, R., Cable, V., Tate, S.

Row 2: Anderson, G., Papke, R., Ullsperger, R., Konopacky, R., De Guire, F., Clayton, W.

Row 3: Mr. Specht, Polzin, J., Silverman, D., Hurrish, D.

ALPHA KAPPA RHO . . . MUSIC



Row 1: Abrahamson, S., Mrs. Michelsen, Wysocki, J., Guzman, B., Tallmadge, R., Mueller, C., Nelson, B.

Row 2: Wesley, F., Miller, L., Kmiotek, E., Stephanek, F., Anderson, L., Mr. Michelsen.

SIGMA ZETA . . . SCIENCE

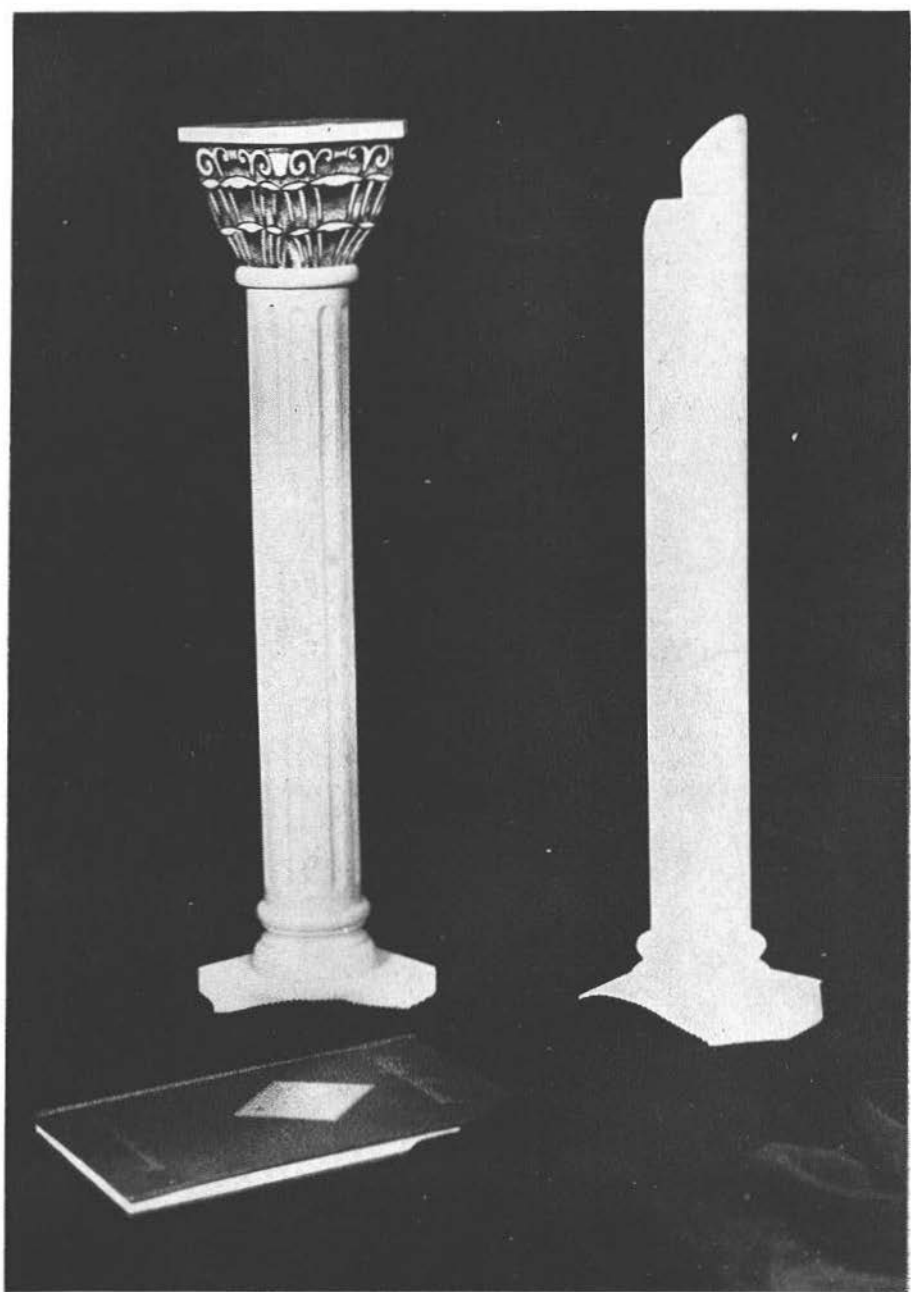


Row 1: Kampenga, A., Jarnick, P., Pflfner, M., Purchatzke, L., Douglas, K., Jacobsen, E.

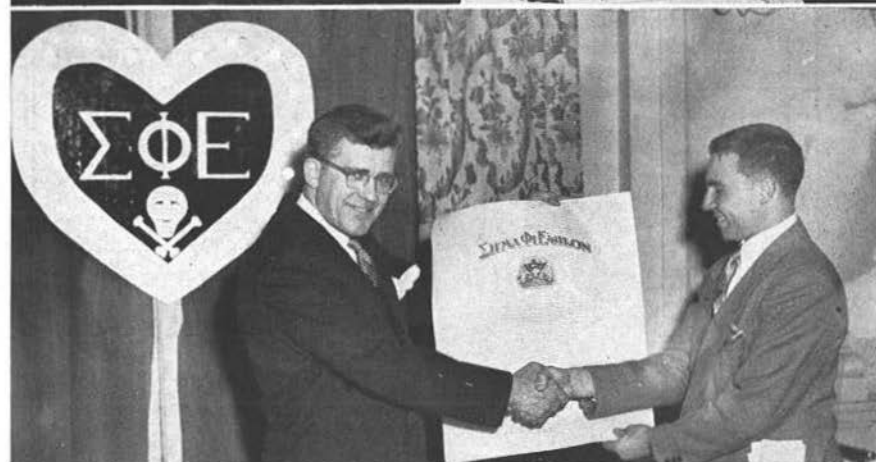
Row 2: Curtis, E., Hartleb, M., Clark, G., Sommers, R., Polzin, R., Breyman, L., Bricco, V., Butts, J.

Row 3: Mr. Faust, Bruha, J., Beste, R., Hurrish, G., Brandt, J., Andrews, O., Wiersma, W., Gosh, J., Freiberg, A., Wood, R., Drew, D., Vissers, D., Hoffman, F.

THE GREEKS



GREEK ACTIVITIES



Looks like Greeks to me!

CONSTRUCTIVE PLEDGING



TAU GAMMA



Row 1: Butts, J., Thompson, D., Borja, F., Marrows, V., Miller, D.,
Bremen, L.
Row 2: Pfiffner, M., Cabot, C., Collins, C., Brittnacher, M., Forth, L.,
Forth, C., Kusserow, B., Lane, J., Zellinger, J., Johnson, D.,
Schmeeckle, W.

Tau Gamma Beta undertook another busy year beginning with the Fall Tea in September. The first sorority organized on the campus, it is distinguished by the colors of pink and blue and is known for its active group loyalty to our Alma Mater. Some of the annual Tau Gamma traditions include an alum tea, Senior Party and a Homecoming float, this year winning first prize. The Intersorority Dance in co-operation with the Omegas and Psi Betas was given on St. Valentine's Day with

BETA



Row 3: Abrahamson, S., Aronson, C., Lund, M., Torzewski, B., Nelson, B., Gruen, J., Seif, D., Charlesworth, R., Schultz, J.
Row 4: Jarnick, P., Leachy, K., Christoffersen, R., Newhall, D., Sheets, S., Suckow, G., Langfeldt, L., Court, N., Bartelt, M., Smith, M., Hartleb, M., Moll J.
Row 5: Schroeder, J., Wagner, J., Olson, L., Bahr, N., Curtis, E., Clark, G., Kearns, R., Weisbrot, B.

a most appropriate theme — "Sweetheart's Holiday." Joyce Moll led the group through the first semester's activities. During the second semester, President Barbara Nelson guided the group through the activities including the "Tournament of Roses" rushing party and the "Cotton Swirl." A much treasured president's pin was presented to the sorority this year, the gift of an alum.

PSI BETA



Row 1: Kuhnke, D., Thurston, J., Polivka, E., Guzman, E.
Row 2: Bullock, P., Teetzen, R., McIntee, R., Schaefer, V., Keyser, Miss,
Pautz, N., Ullman, Miss, Baumer, M., Harrington, N., Meister, A.

Celebrating its second birthday last fall, Psi Beta Psi's successful year began during orientation week with a skit for the freshmen. Contributing to the first semester campus activities, the group led by President Nancy Pautz presented the Annual Fall Festival with the theme of "Campus Carnival," a Homecoming float, and the "Davy Jones Locker" rushing party. Wearing the sorority colors of green and peach, the

PSI



Row 3: Pierre, W., Kalepp, B., Panke, M., McLees, D., Gerner, D.,
Schultz, V., Edmund, C., Hofman, V., Allen, K., Isberner, H.,
Zastrow, M.

pledges kept ever within their reach the Davy Jones foot locker. The mid-winter tea and second semester pledging during which the prospective members donned new pledge pins were successful under the auspices of President Vivian Schultz. A climax to the year's activities was the Intersorority picnic which with the cooperation of the Tau Gams and Omegas was held in the late spring.

OMEGA MU



Row 1: Sutton, S., Figel, P., Rickel, P., Raaths, A., Cuff, J.
Row 2: Giese, P., Held, B., Corliss, C., Hanson, B., Gilbertson, D.,
Cable, V., Jersey, J., Piehl, J.

Distinguished by the colors of violet and yellow, the Omega Mu Chi began another successful year in contributing whole heartedly to campus spirit. First semester activities included a fall tea, Homecoming float and the annual Christmas Knitting Bazaar, guided by President Barbara Hanson. The Omegas along with the other sororities experimented with an extended pledging season second semester. Previous to the rushing

CHI



Row 3: Conner, S., Havey, P., Sarbacher, J., Clayton, J., Holt, C.,
Piinkerton, J., Sonnenberg, S., Benson, M., Crook, B., Gilbert,
C., Albrightson, D., Palmer, D.

period, the sorority participated in the annual Intersorority coke party. As president, Marjorie Benson led the girls through the second semester activities including the colorful "South Sea Islands" rushing party and the alumni picnic. The year was climaxed by the traditional Omeg Date party.

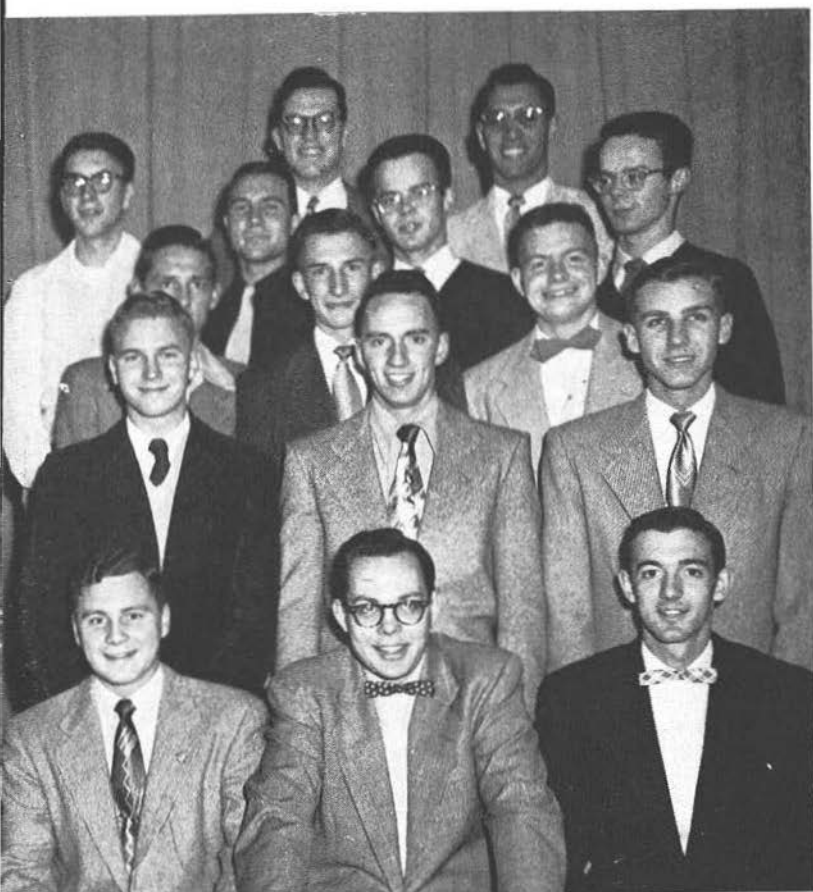
SIGMA PHI



Row 1: Flint, R., Meyer, R., Boettcher, J., Clayton, W., Zukoski, H., Sandberg, J.
Row 2: Krueger, G., Hurlbut, J., Douglas, K., Kussman, R., Beste, R., Purchatzke, L.

Founded in 1930, the Chi Deltas have maintained a prominent position at C.S.C. They have distinguished themselves in every phase of campus life, and this year sponsored the winning candidate for Homecoming Queen. Under the leadership of President Frank DeGuire the Wisconsin Delta chapter was added to the national roll of the Sigma Phi Epsilon

EPSILON



Row 3: Bruha, J., Hedquist, E., Gilbert, M., Wade, R., Hackbart, R., Hurrish, G., Anderson, W.

Row 4: Hoffman, F., Jacobsen, E., Conway, W., Ullsperger, R., Schommer, M., Mulady, J., Rindfleisch, D., DeGuire, F., Carlson, L., Paulson, R., Bruha, R., Paulson, G.

fraternity in December of 1952. It was a big day when the national officers came to install twenty-eight of the former Chi Delts into the new chapter, thus making the second national fraternity on the campus.

During the second semester under the new name the Sig Eps conducted a colorful rushing period of ten weeks which was climaxed by a traditional Senior Banquet on May 9.

PHI SIGMA



Row 1: Gruling, R., Korn, E., Bartosz, J., Anderson, R.
Row 2: Silverman, D., Bogaczyk, S., Wilkinson, J., Kline, A., Vissers, D.,
Schrank, D.

The men of the Phi Sigma Epsilon fraternity, Kappa chapter of the national fraternity, no sooner got back on campus this year than they began their round of activity. Homecoming found them busy plugging for their queen and going over plans for a float. It was during the first semester under the guidance of President Jerry Bartosz that the much desired campus fraternity house, at 1022 College Avenue, became a reality for the Phi Sigs who use it for the convenience and pleasure of actives and alumni. In November the chapter played host to the regional conclave.

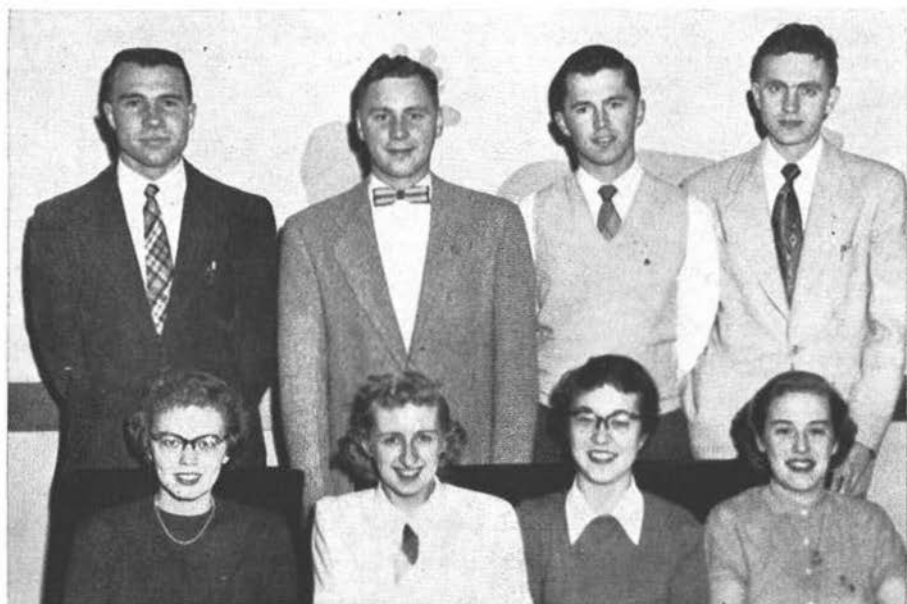
EPSILON



Row 3: Baerenwald, J., McMahon, R., Drechsler, H., Langton, J.
Row 4: Kott, D., Pionke, D., Drew, D., Miller, L., Anderson, G.,
Popeck, J.
Row 5: Greathouse, J., Schmidler, F.

Second semester pledging found the prospective members prominent on the campus with their traditional red bow ties, hats and paddles. Along with the other Greek organizations, the Phi Sigs lengthened their pledging period. As President, James Wilkinson led the organization through a successful spring which was climaxed by the annual style show, put on for the public and the college. Thus the Phi Sigs chalked up another great year!

GREEK GOVERNMENT



Row 1: Hanson, B., Kuhnke, D., Pautz, N., Corliss, C.
Row 2: De Guire, F., Clayton, W., Bartosz, J., Pionke D.



Row 1: Pfiffner, M., Hofman, V., Pautz, N., Connor, S.
Row 2: Corliss, C., Hanson, B., Kuhnke, D., Curtis, E.

RELIGIOUS ORGANIZATIONS

It is indicative of the spirit at C.S.C. that we should have on campus seven active religious groups which are so well-supported by the students and faculty alike.

At the business meetings which are held on the first and third Thursdays of each month, the members also talk things over with their advisors and have a pleasant time socially. This year was a busy one, filled with many extra projects — such as the Christmas Fund for the Sparta Orphanage, a variety show, a state convention held on campus, contributions to a convent building fund, the Deputation Team, the annual banquets, and the Camp-Out planned for the summer.

Yes, it was a busy year and we hope that C.S.C. "Grads" will always keep this generous spirit, for as long as that exists, the world has little to fear and much to hope for.

GAMMA DELTA



Row 1: Schellin, J., Walrath, M., Pomerening, F., Anderson, G., Timm, B., Krause, D., Zastrow, M.
Row 2: Golz, D., Hahn, B., Moss, D., Munderloh, J., Seefeldt, R., Lacina, W., Bruha, R.
Row 3: Mortenson, A., Helland, E., Sikyta, H., Meister, A., Colruie, C., Lehman, M., Voight, R., Falk, B., Purchatzke, L.



Row 1: Lane, J., Bogsted, L., Schulz, G., Kalepp, B., Kusserow, B., Moll, J.
Row 2: Rev. Wunderlich, Arndt, D., Scheelk, J., Walrath, D., Wolfe, J., Kohls, W., Raaths, A., Jones, J., Bruha, J.
Row 3: Zeng, W., Boettcher, J., Bahr, N., Hackbart, R., Hvass, M., Habeck, R., Teetzen, W., Ross, D., Hammersmith, R., Wieman, C.

NEWMAN CLUB



Row 1: Weisbrot, A., Dombroske, I., Untiedt, J., Giese, S., Dzurick, L., Sobczak, A., Daanen, C., Gallistel, H., Charlesworth, R.
 Row 2: Golomski, A., Allen, D., Welniak, A., Lensmire, J., Marchel, A., Panke, M., Baumer, M., Schuelke, M.
 Row 3: Javorek, M., Morgan, E., Helbach, H., Paski, B., Lang, M., Pierre, W., Allen, K., Hazelwood, P., Forth, C.



Row 1: Extrom, D., Achenreiner, S., Domack, E., Kabat, C., Miller, V., Langfeldt, L., Mozuch, K., Koller, M., Bricco, V., Leitner, M.
 Row 2: Schnauffer, T., DeGuire, F., Hale, C., Huettl, B., Collins, G., Swendrzynski, M., Foster, M., Daniel, J., Summers, J., Czerniewski, J.
 Row 3: Hanke, R., Wirkus, T., Wagner, I., Ressler, R., Gosh, J., Sommers, R., Huberty, C., Vissers, D., Groessl, W.



Row 1: Miss Winkler, Leahy, K., Father Brake, Father Hensler, Borja, F., Pfiffner, M., Brittnacher, M.
 Row 2: Drechsler, H., Sherfinski, B., Blaskey, G., Bradley, M., Bergelin, J., Varney, P., Allen, A., Butts, J.
 Row 3: Miss Roach, Farris, M., Noreika, M., Ottmon, E., Karls, S., Klaus, C.

WESLEY



Row 1: Tellock, L., Smith, M., Rickfort, P., Edmund, C., Gruen, J., Newhall, D.
Row 2: Johnson, D., Isberner, H., Moll, J., Zellinger, J., Breymann, L., Garfield, G., Smith, M.
Row 3: Schroeder, L., Nelson, P., Steffen, H., Schadewald, F., Toser, R., Chapman, J., Gilbert, C.



Row 1: Polzin, R., Zellinger, E., Williams, J., Wade, R., West, B., Vaughn, R.
Row 2: Rose, S., Reznicek, M., Tallmadge, R., Thalacker, M., Sutton, S., Benson, M.
Row 3: Cook, R., Wilde, R., Schweinler, W., Schneeberg, D., McAuley, M., Jacobsen, E., Mr. Lyness.

LUTHERAN STUDENT ASSOCIATION



Row 1: Mitchell, J., Aronson, C., John, C., Thompson, D., Albrightson, D., Thompson, D., Anderson, J.

Row 2: Hiller, A., Bras, A., Bestul, H., Hedin, C., Schultz, V., Olson, A., Kristianson, R., Schuett, M., Engebretsen, G., Pietz, A., Zander, S.

YOUNG WOMEN'S CHRISTIAN ASSOCIATION



Row 1: Smith, M., Buehler, L., Seif, D., Caskey, P., Kraut, I.

Row 2: Schaefer, V., Gerner, D., Isberner, H., Jones J., Schultz, P.

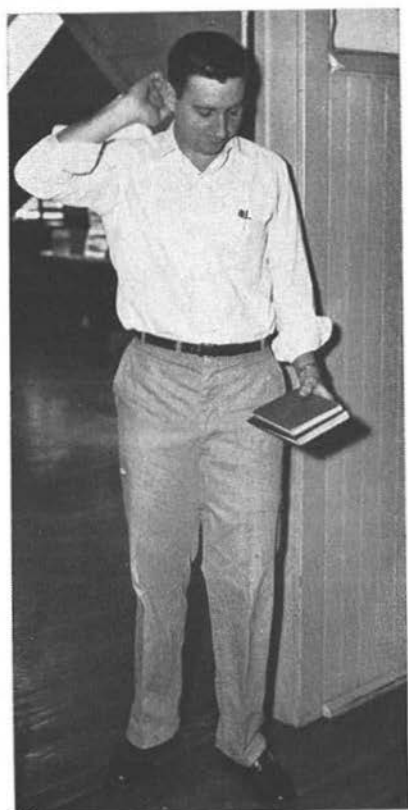
ACTIVITIES



REGISTRATION



The First Round Up.



Loaded Sophomores — Lucky Seniors

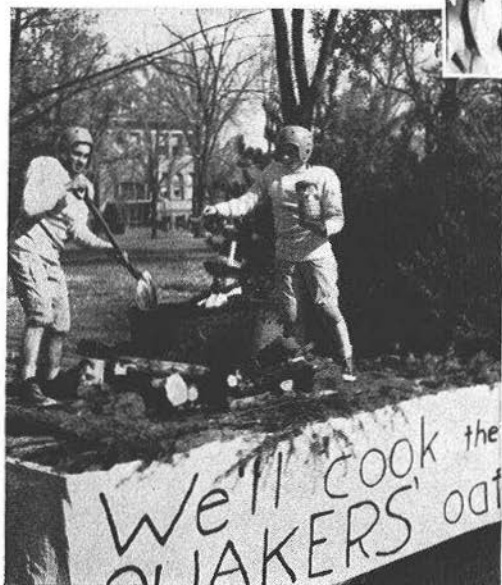


The girls of the Home Ec department were on the move this year, when they abandoned the old home management house for the new house at 1103 Main Street. The moving was completed in March of 1953 when five girls and Miss Youmans moved in.



HOMECOMING





NELSON HALL



Do we need words!



Mrs. Angel, Director
Miss Elsted, Assistant

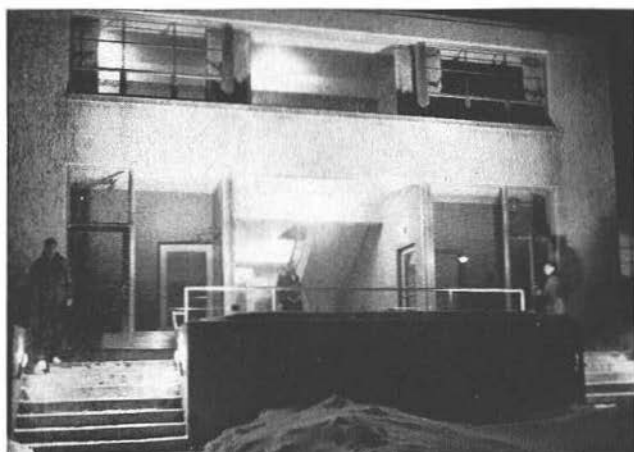


Which dessert is biggest?



Where do you study, Hack?

DELZELL HALL



Night light — night life



Whose pink socks?

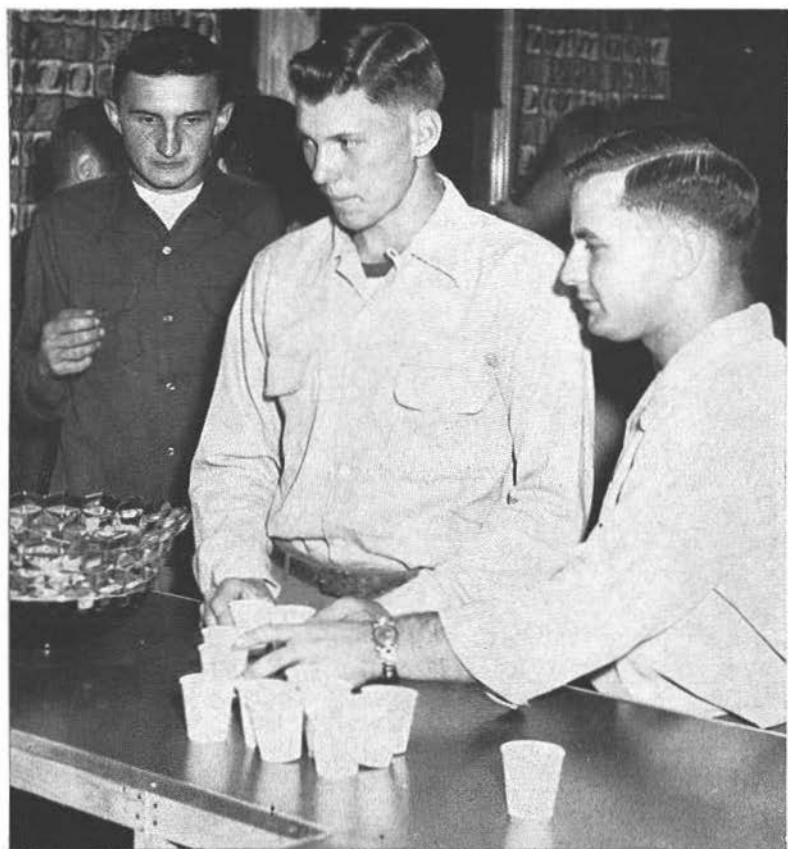


Papa Eagon's little helper



Play some more, John

UNION



Hey, leave some for me!



"My Favorite Dance"

ROOMING HOUSES



What's cooking?



Studying — Bob Hope style

COLLEGE THEATER



Tsk, Tsk, poor woman



Row 1: Smith, D., Eide, E., Lehmann, G.

Row 2: Swendrzynski, M., Czerniewski, R., Malick, P., Kampenga, A., Boettcher, J., Mr. Burroughs, Bahr, N., Jarnick, P., Curtis, E.

Row 3: Johnson, D., Suehring, J., Reznicek, M., Marros, V., Gaylord, L., Lord, A., Bricco, V., Schuh, J., Drechsler, H., Gruling, R., Reda F., Arndt, D., Wade, R., Hvass, M.

Row 4: Plumb, H., Robinson, C., Schumacher, H., Silverman, D., Grow, E., Bigalke, G., Brocker, F.

COLLEGE THEATER



A crisis for "The Clod"

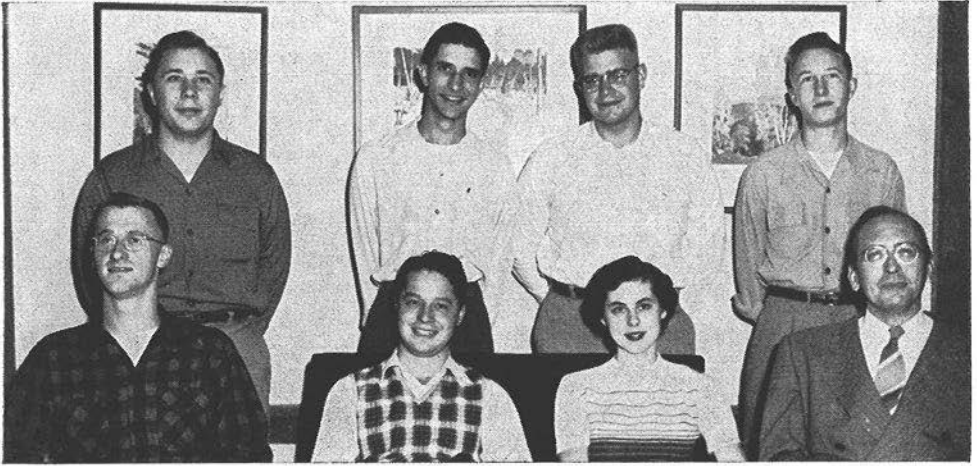


This way — !



Artist at work

STUDENT COUNCIL



Row 1: Schadewald, F., Flint, R., Crook, B., Mr. Trytten.

Row 2: Breitenfeldt, C., Krueger, G., Miller, J., Kussman, G.

WOMEN'S SELF GOVERNING ASSOCIATION

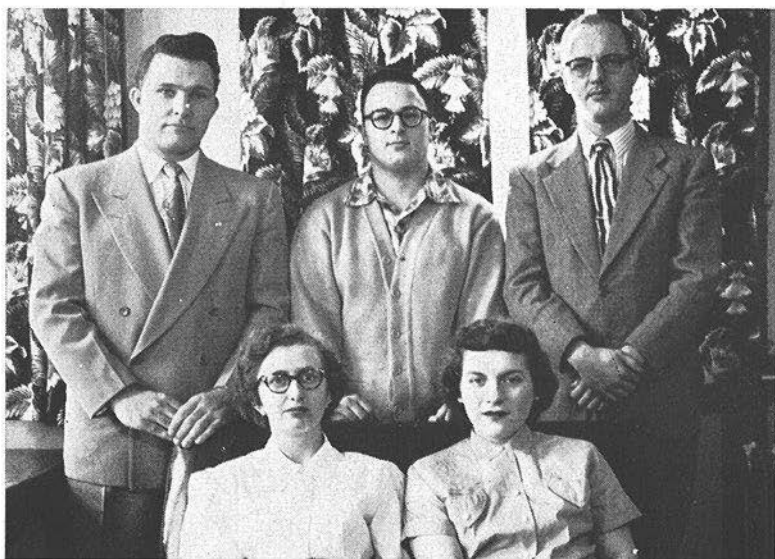


Row 1: Bricco, V., Brittnacher, M., Malick, P., Bahr, N., Lehmann, G., Smith, M.

Row 2: Charlesworth, R., Sonnenberg, S.

Row 3: Huettl, B., Chapman, J., Weisbrot, A., Christoffersen, R., Crook, B., Gilbert, C., Czerniewski, R., Arndt, D., Leahy, K.

YOUNG DEMOCRATS



Row 1: Voight, R., Butts, J.

Row 2: Mortenson, A., Peyovich, R., Kristianson, R.

YOUNG REPUBLICANS



Row 1: Flint, R., Drechsler, H., Reda, F., Clark, J.

Row 2: Caskey, P., Clark, G., Marros, K., Marros, T., Zellinger, J., Zellinger, E.

Row 3: Papke, R., Schnauffer, T., Marros, V., Tate, S., Herman, N., Williams, J.

Row 4: Polzin, J., Brocker, F., Koehn, E., Breese, R., Zieher, G.

IRIS



Lane, J., Bruha, J., Mulady, J., Smith, M., Bauer, E., Popeck, J.



Reznichek, M., Kritz, D., Wagner, I., Smith, M., Meister, A.



Seif, D., Derge, P., Clayton, J.

POINTER



Deadline on their hands

Newby, Y., Aronson, C., Kusserow, B., Raaths, A.,
Caskey, P.



Ross, D., Teetzen, W., Habeck, R., Hazelwood, P., Sonnenberg, S.



Krueger, R., Czerniewski, R., Giese, P., Czernieski, J., Summers, J., Baerenwald, G.

RADIO WORKSHOP



Ellen, Dick, Tom and Lois are on the air.



Go West, Gals!



Viva L' artiste



BAND and



Row 1: Seif, D., Salvin, T., Wesley, F., Conway, W., Holt, C., Kmiotek, E., Bogsted, L., Anderson, G., Krause, N., Reed, R.

Row 2: Charlesworth, R., Schultz, J., Albrightson, D., Court, N., Scheselk, J., Lane L., Stephaneck, F., Cram, L., Miller, L., Anderson, L., Sohr, C., Sonntag, W.



Row 1: Colrue, C., Smith, M. A., Weisbrot, A., Hale, C., Zerneke, J., Schaefer, V., Schnauffer, T., Held, B., Morgan, E., Thomander, M., Golz, D., Pfiffner, M., Zellinger, J., Smith, M., Leitner, M., Varney, P., Abrahamson, C., Kabot, C.

Row 2: Eide, E., Wysocki, J., Welniak, A., Koller, M., Collins, G., Voight, R., Schultz, G., Zellinger, E., Bricco, V., Moll, J., Rickel, P., Thompson, D., Kennedy, J., Hoest, P., Albrightson, D., McIntee, R.

GIRLS' GLEE CLUB



Row 3: Engebretsen, G., Jones, J., Nelson, B., Schultz, G., Maynard, S., Bigalke, G., Stogbauer, V., Braasch, R., Holmgreen, J.

Row 4: Suckow, G., Moss, V., Trotier, K., Allen, D., Votava, C., Smith, D., Huettl, B., Williams, J., Wirkus, T.



Row 3: Holt, C., Gruen, J., Nelson, B., Allen, D., Tallmadge, R., Schroeder, J., Miller, S., Giese, P., Ekvall, B., Nelson, P., Nelson, M., Chapman, J., Hazelwood, P., Breyman, L., Court, N.

Row 4: Smit, J., Anklam, L., Mozuch, K., Clayton, J., Torzewski, E., Broeren, R., Bahr, N., Mueller, C., Daniel, J., Lehmann, G., Olson, L., Patz, N., Suckow, G., Untiedt, J.

MEN'S GLEE

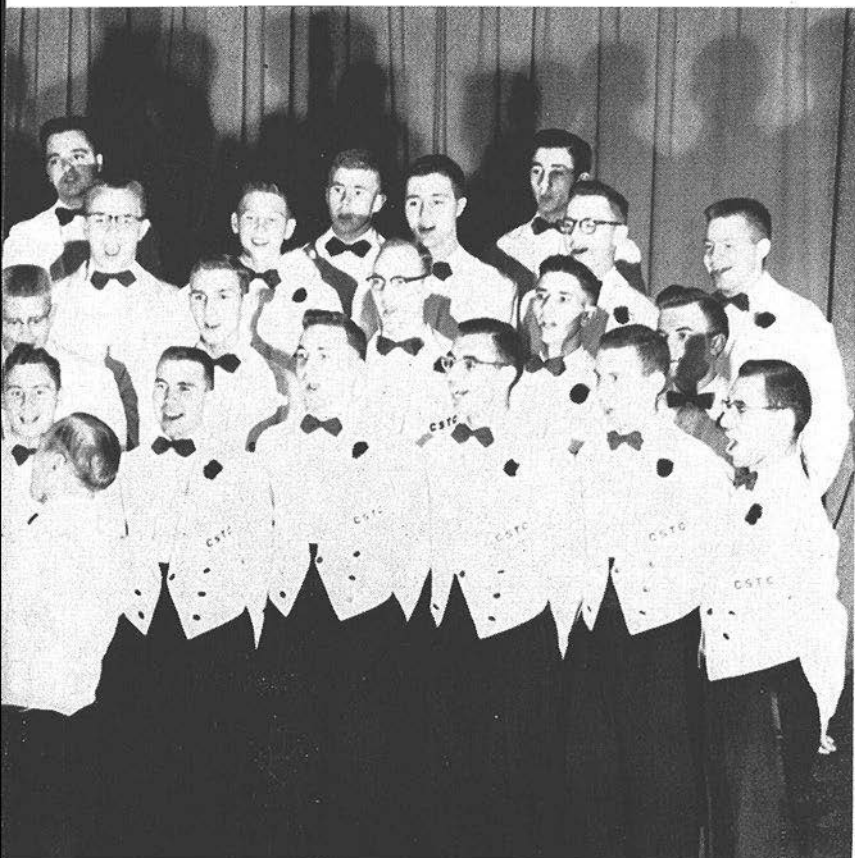


Director, Mr. Knutzen

Row 1: Hackbart, R., Boettcher, J., Wagner, L., Williams, J., Eves, P., Clayton, W., DeGuire, F., Heuer, E., Bruha, J., Schweinler, W., Bruha, R.

Row 2: Ross, D., Jacobus, R., Mansour, N., Schneider, R., Miller, J., Purchatzke, L., Kristianson, R., Krueger, G., Stelchek, D.

CLUB



Row 3: Kohls, W., Krueger, R., Wislinsky, R., Winterfeldt, R., Drechsler, H.,
Papke, R., Cook, R., Plank, E., Carlson, L., Anderson, W.

Row 4: Wade, R., Derge, R., Reda, F., Moon, H., Plumb, H., Schuh, J.,
Hutter, I.

LEISURE HOURS



Daisy got her man



Burma Shave special

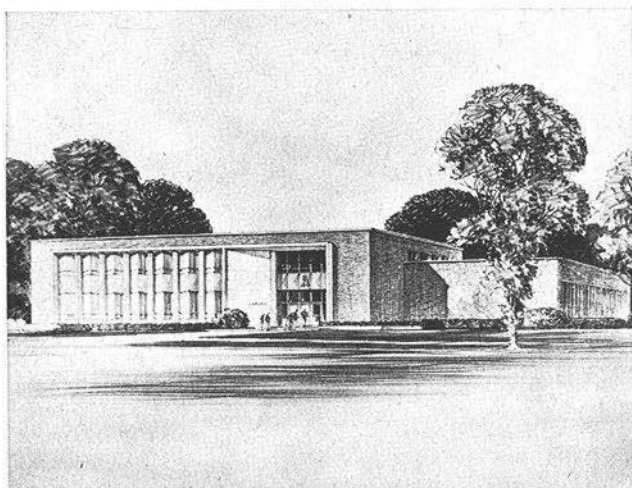
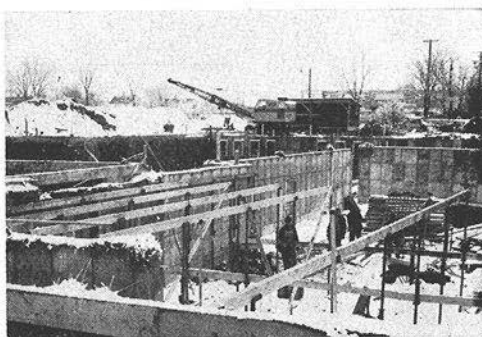
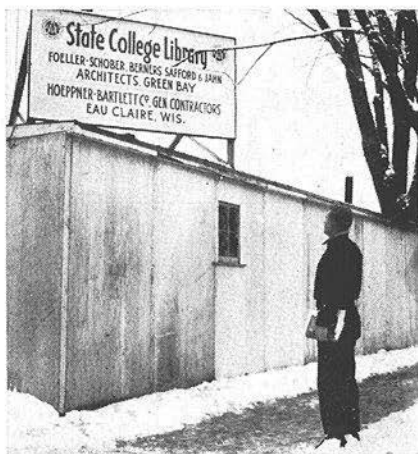


Ugh!



Give her the axe, boy!

LIBRARY CONSTRUCTION



Look what you're leaving seniors!

SENIOR BALL



SENIOR BALL ROYALTY

Henry Drechsler

Mary Pfiffner

JUNIOR PROM



JUNIOR PROM ROYALTY

Ray Anderson
Barbara Hanson

MAINTENANCE



Przybylski, R., Kucera, C., Rasmussen, J., Davis, L., Manravage, F., Haase, M.



Mr. "Fix-it" Stien

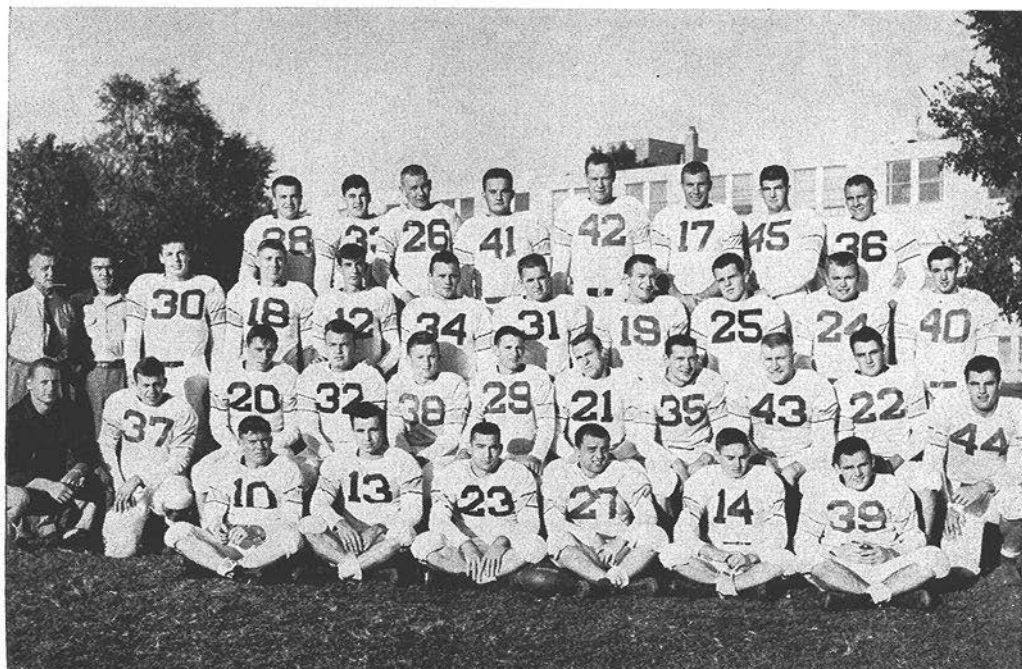


Keeping us warm

SPORTS



FOOTBALL



Row 1: Stimac, R., Purchatzke, B., Herrmann, D., Popeck, J., Davidson, S., Jersey, D.
 Row 2: Coach Dehlinger, Munderloh, J., Hackbart, R., Sontag, J., Lang, T., Peabody, J., Wislinsky, R., Bach, R., Jurgella, C., Schroeder, W., Brandt, J.
 Row 3: Coach Quandt, Coach Roberts, Crook, J., Roloff, K., Averill, H., Karls, S., Hunter, R., Gilbert, M., Miller, N., Due, A., Sandberg, J.
 Row 4: Douglas, K., Sanks, J., Bostad, R., Seagraves, M., Mundt, R., Schommer, M., Andrews, O., Hurlbut, D.

FOOTBALL SCORES

CSC	12	Luther	7
CSC	13	Mich. Tech.	0
CSC	27	Oshkosh	7
CSC	27	Stout	0
CSC	17	Milwaukee	7
CSC	13	Whitewater	6
CSC	0	Platteville	13
CSC	33	Eau Claire	6



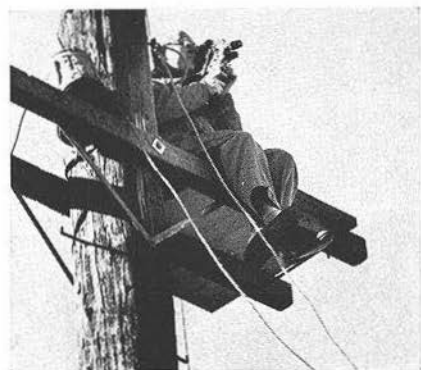
Wislinsky hits for ten!



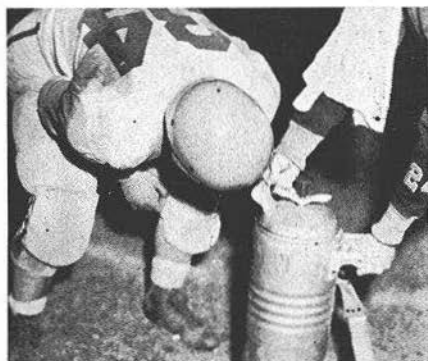
Is she in the stands, Joe?



Where's the Piano?

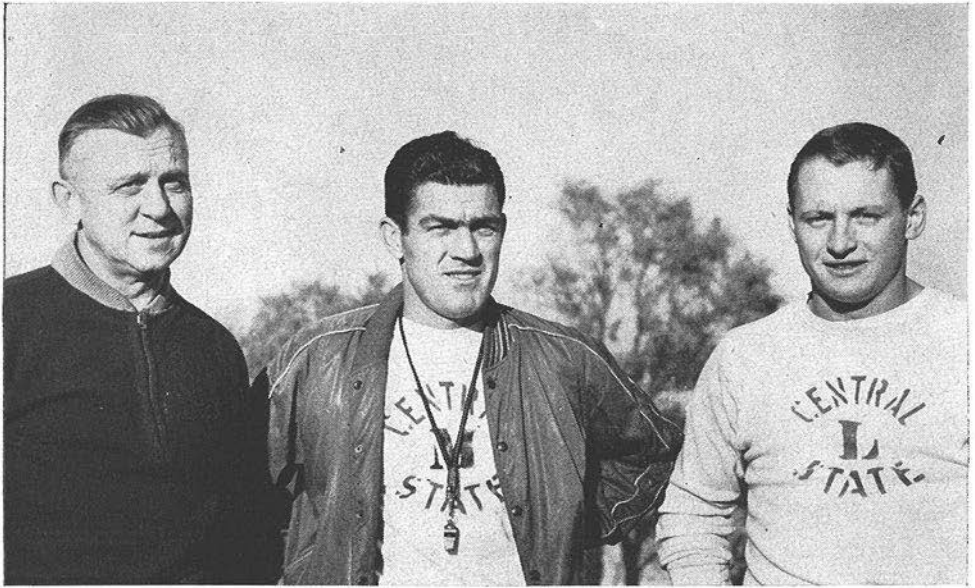


Don't miss that one!



Refresher for Stan!

FOOTBALL



Coaches Hale Quandt, John Roberts, Bob Dehlinger

Will anyone ever forget the fighting, charging, spirited, never-say-quit gridiron aggregation of 1952? Coach John Roberts stepped into his new assignment like a seasoned veteran as he expertly blended a squad of eager yearlings with learned lettermen, instilling in them an unexcelled desire to play the game for all it was worth and win, win, win.

And win they did! Six straight foes fell victim to the Pointer surge before champion Platteville could head the Purple and Gold contingent. Bruised but undaunted, the P and G's used their two-platoon system to its fullest to romp over the final foe of the season and pocket an admirable 7-1 record for their efforts.

Seven Pointers fought their way into all-conference berths. Seniors Bryan Purchatzke, Jack Popeck, Marlyn Gilbert and Stan Karls along with Juniors Mark Schommer and Nubbs Miller and Sophomore Bob Bostad, were the men honored by rival coaches.

It was a well known fact that the Pointers lacked the size usually associated with college teams. Nevertheless, the Robertsmen were giants — giants of desire!

Nubbs hits the hole!



Hey! The ball, Jim!



Hit him! Jack!

BASKETBALL



Row 1: Anderson, R., Bechard, R., Redding, E., Wieman, C., Sanks, J.
 Row 2: Schommer, M., Boldig, J., Schadewald, F., Blomiley, R., Thompson, L., Amburgy, J., Bostad, R.
 Row 3: Collins, L., Huberty, C., Buckberger, P., Davis, R., Johnson, R., Wasserman, K., Schroeder, W., Marko, R., Weber, G.

BASKETBALL SCORES

CSC	84	Mich. Tech.	75
CSC	91	Northland	58
CSC	70	Winona	55
CSC	76	Milton	56
CSC	78	Milwaukee	67
CSC	72	Whitewater	60
CSC	58	Lawrence	76
CSC	67	Ripon	90
CSC	66	St. Norberts	52
CSC	73	Oshkosh	78
CSC	69	Eau Claire	71
CSC	78	Stout	61
CSC	61	Platteville	78
CSC	74	Lawrence	63
CSC	82	Milwaukee	79
CSC	80	Whitewater	59
CSC	62	Superior	66
CSC	105	River Falls	110
CSC	90	Oshkosh	74
CSC	60	Platteville	78

BASKETBALL



Bashful Bucketeer



"Ace" hits for two!



Nice block, Les!



Watch his hand Joe!



Smoking up the floor!

CHEERLEADERS



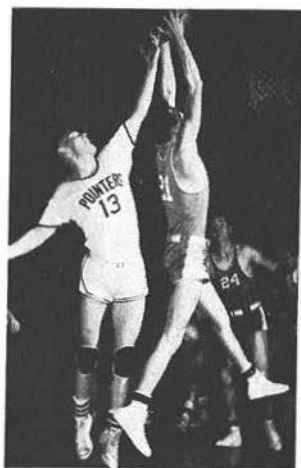
Row 1: Schieb, E., Harrington, N.

Row 2: Figel, P., Varney, P., Smith, M., Moss, D.

BASKETBALL

Scrapping every inch of the way, C.S.C.'s hardcourt men used their patent scoring power to its fullest advantage and wound up the season with a creditable 12-8 record. Supercharged from the starting whistle, the Pointers took on each opponent in turn with only one objective in mind — to emerge the victors.

Point used their home-court advantage to bring down such powerhouse contingents as Lawrence, of the Midwest conference, and St. Norberts, along with strong Milwaukee and Oshkosh aggregations in Wisconsin State conference action. Fast breaking, shooting, passing, driving, veteran competitors Ray Anderson, Bob Bostad, Bob Blomiley, Dick Bechard, Fred Schadewald, Les Thompson, and Jerry Boldig carried the brunt of the Pointer attack, ably supported by such outstanding freshmen as: Erv Redding, Joe Sanks, Ken Roloff, William Schroeder, Carl Wieman, John Amburgy, Pat Buchberger and Ken Wasserman. The Pointers had a great season; bigger things are yet to come.



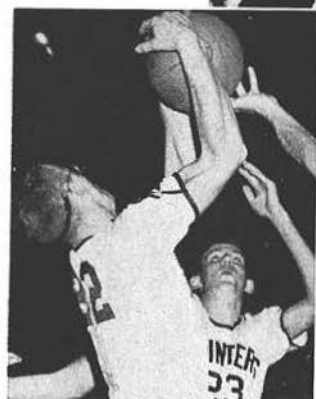
Ugh! Just a little more!



Got it zeroed in!



Use the other hand, Moose!



Hang on tight!



Free ride!

WRESTLING



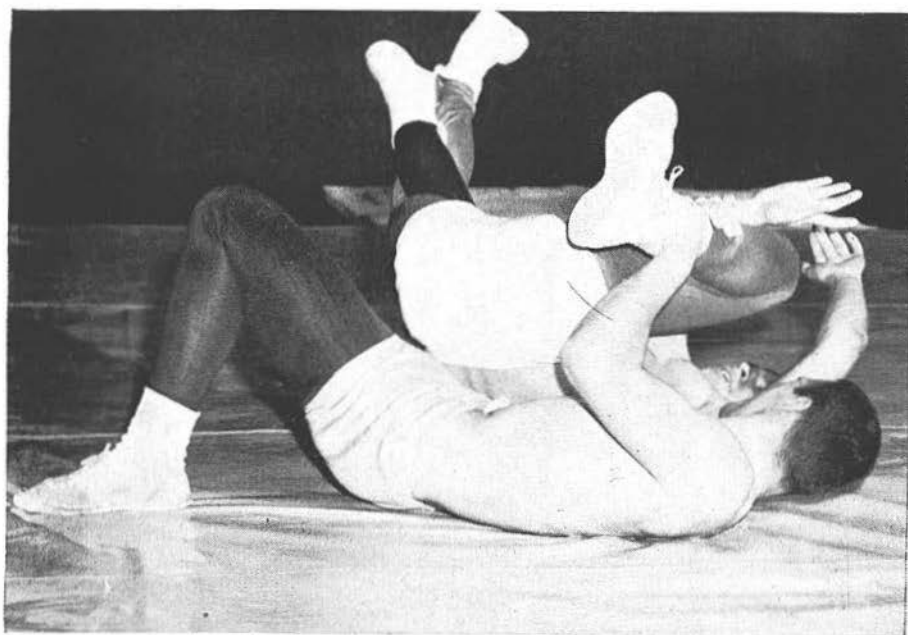
Row 1: Ross, D., Hunter, H., Coach Roberts, Munderloh, J., McCauley, T.

Row 2: McMahon, T., Hurlbut, K., Wislinsky, R., Junior, B., Hurlbut, D., Seefeldt, R., Herrmann, D., Langton, J.

After making a brief but welcome appearance last year, wrestling emerged from its embryonic period to take its place beside its brother sports in 1952-53. The Training School gym, for the first time in many years, again became the haven of a varsity sport.

C.S.C.'s grapplers embarked on an ambitious six match schedule and batted an even .500. The three victories came in two decisive wins over Carroll College and one over perennially strong Ripon College. On the other side of the ledger, Coach John Robert's boys became victims of Lawrence College twice, and of Ripon once.

Leading the crew were Dave Hurlbut and Ron Wislinsky, both undefeated in collegiate competition. Terry McMahon, John Langton, Ralph Seefeldt, Don Herrmann, Bernie Junior, Ken Hurlbut, and Ron Hunter, filled in by Terry McCauley, Dave Ross and Jerry Munderloh made the necessary victory points for the Central State College. A creditable showing, which has insured the sport's long stay, is the enviable record of this year's wrestling team.



Working hard for a pin

WEIGHT LIFTING



Conway, W., Hurlbut, K., Hurlbut, D., Weber, G.

TRACK



Only a mile to go, Eddy

Good form, Jack



Tape breaker, Rhody

GOLF



Rhode, R., Tanner, D., DeGuire, F., Ullsperger, R.

TENNIS



Toser, R., Due, A., Cook, R., Sommers, R.

WRA



Row 1: Smith, M., Krause, D.
Row 2: Arndt, D., Sobczak, A., Schieb, E., Raddant, C., Hoen, G., Thurston, I.,
Hale, C., Bartelt, M., Lehman, M., Smit, J.
Row 3: Pietz, A., Daniels, J., Rosin, L., Dill, M., Extrom, D., Bricco, V., Brittnacher, M.,
Achenreiner, S., Butts, J.



Get that ball!



Hang 'em up, Rollie

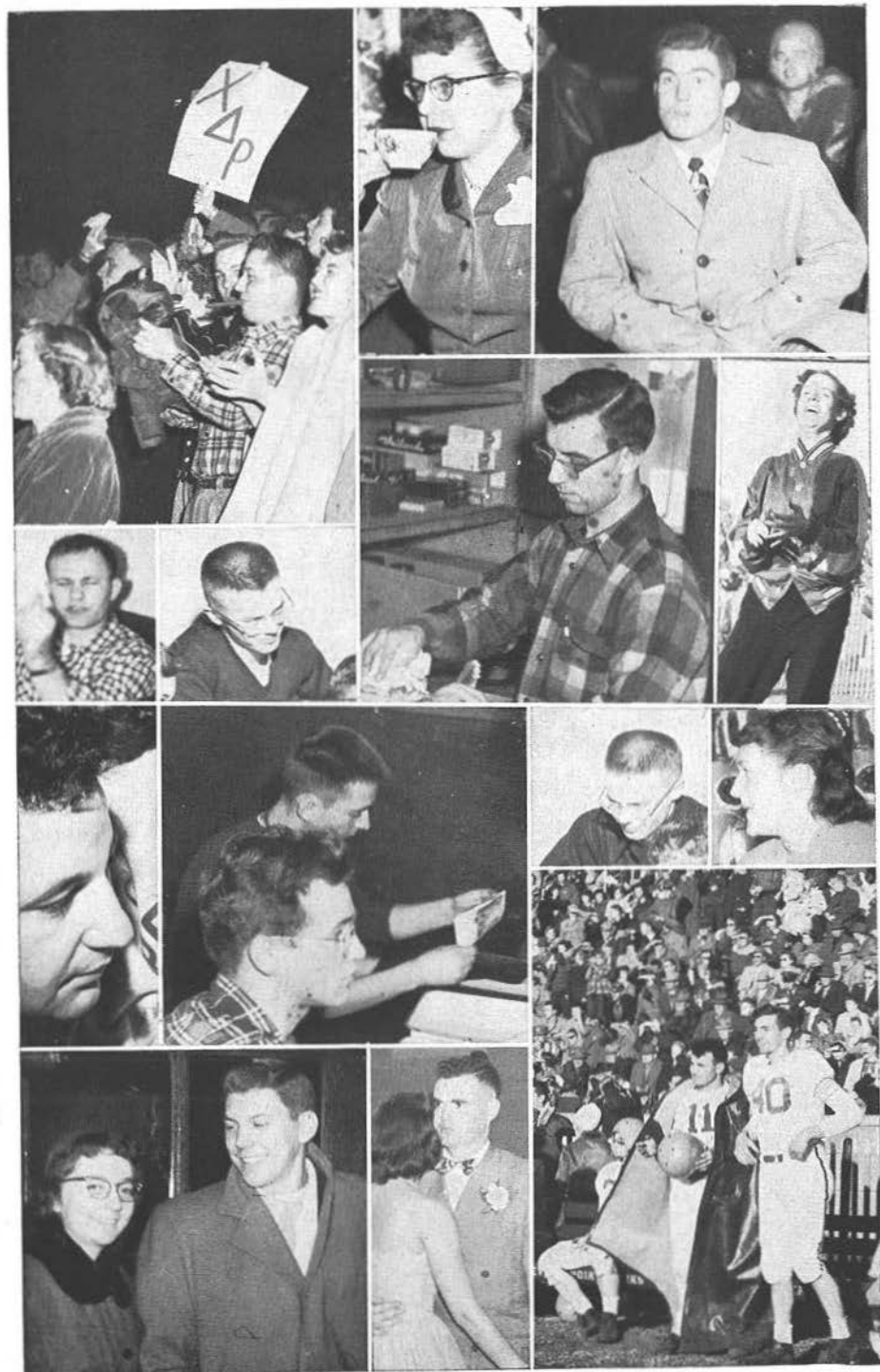
S CLUB



Row 1: Marquard, R., Hunter, R., Clayton, W., Herrmann, D., Munderloh, J., Hurrish, G.
Row 2: Wislinsky, R., Ullsperger, R., Hackbart, R., Schommer, M., Gilbert, M., Giordana, J.,
Dreuger, R., Tanner, D.



Row 1: Roloff, K., Jurgella, C., Purchatzke, B., Boldig, J., Thompson, L., Bostad, R.
Row 2: Miller, N., DeGuire, F., Sanks, J., Bechard, R., Baerenwald, G., Seagraves, M.,
Mundt, R., Schroeder, W., Due, A., Jacobsen, E.

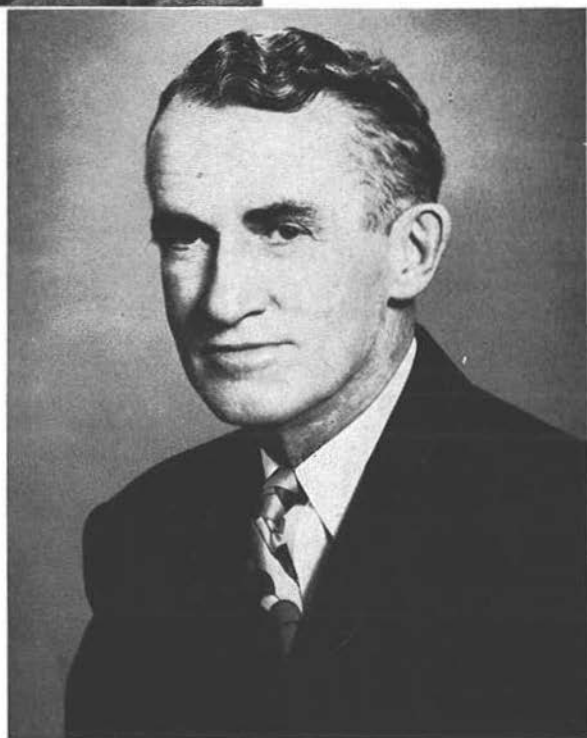


FACULTY





PRESIDENT
WILLIAM C. HANSEN



REGENT
WILSON S. DELZELL



WARREN JENKINS
Dean of the College of Letters
and Science



QUINCY DOUDNA
Dean of Administration
Director, Elementary Education



RAYMOND GOTHAM
Director, Training and
Placement



RAYMOND RIGHTSSELL
Director, Secondary Education
Physics



HERBERT STEINER
Dean of Men
History



ELIZABETH PFIFFNER
Dean of Women
History



This year marks the first time in over two decades that Susan E. Colman has not been a member of our faculty.

When Miss Colman announced her retirement in September, 1952, the faculty and student body together felt a personal loss. She had become so much a part of C.S.C. that it was difficult to imagine college life without her. Her spontaneous enthusiasm, wide experience, great knowledge, unswerving loyalty and friendly personality made her a friend of all that knew her.

C.S.C. wishes Miss Colman all good fortune in whatever future tasks she undertakes.



NORMAN KNUTZEN
English



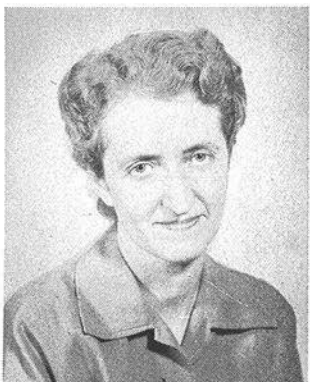
BERTHA GLENNON
English



ALICE BLODGETT
English



PAULINE ISAACSON
Speech, History



MARY ELIZABETH SMITH
Associate Director of Primary
Education, English



LELAND BURROUGHS
English, Speech



MAY ROACH
Associate Director of
Rural Education



MILDRED DAVIS
French



EDNA CARLSTEN
Art



NELIS KAMPENGA
Librarian



SYBLE MASON
Assistant Librarian



MARGARET RITCHIE
Assistant Librarian



LEILA TOLO
History



NELS REPPEN
Education, Social Studies



FRANK CROW
History



PETER MICHELSEN
Music



ALF HARRER
Psychology, Education



ALBERT HARRIS
Psychology, Philosophy



GILBERT FAUST
Chemistry



ROLAND TRYTTEN
Chemistry



EDGAR PIERSON
Biology



ARTHUR LYNESS
Biology



MONICA BAINTER
Physics, Mathematics



AROL EPPLER
Biology



BERNARD WIEVEL
Biology, Conservation



JAMES NEWMAN
Conservation



FRED SCHMECKLE
Conservation



ROBERT LEWIS
Associate Director of Intermediate
Education, Geography



RAYMOND SPECHT
Geography



GERTIE HANSON
Geography, Radio



EMILY WILSON
Home Economics



RITA YOUMANS
Home Economics



DORIS DAVIS
Home Economics



KENNETH BOYLAN
Mathematics



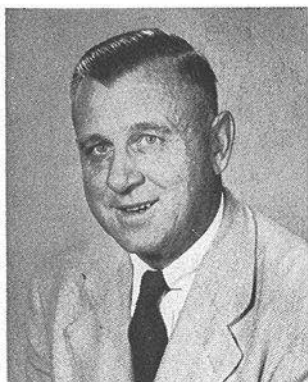
FLOYD NIXON
Mathematics



MIRIAM MOSER
Women's Physical Education



JESSIEMAE KEYSER
Women's Physical Education



HALE QUANDT
Coaching, Physical Education



JOHN ROBERTS
Coaching, Physical Education



BURTON PIERCE
Principal of Junior High School



MARY ULLMAN
Junior High School Supervisor



EDITH CUTNAW
Junior High School Supervisor



MARY SAMTER
First Grade Supervisor



GLADYS VAN ARSDALE
Third Grade Supervisor



MILDREDE WILLIAMS
Second Grade Supervisor



LEAH DIEHL
Fourth Grade Supervisor



BURDETTE EAGON
Sixth Grade Supervisor



ALICE HANSEN
Fifth Grade Supervisor



CECILIA WINKLER
Rural Training School Supervisor



MARJORIE KERST
Rural Demonstration School
Supervisor



PHYLLIS RAVEY
Kindergarten Supervisor



CLIFFORD MORRISON
History



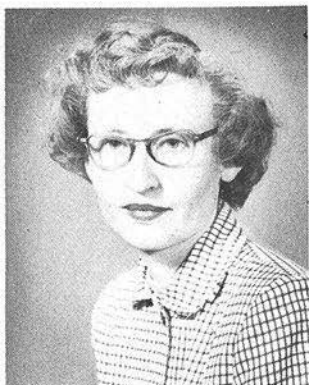
HELEN HEEL
Music Supervisor



DOROTHY KAMPENGA
Training School Library



DR. HENRY ANDERSON
College Physician



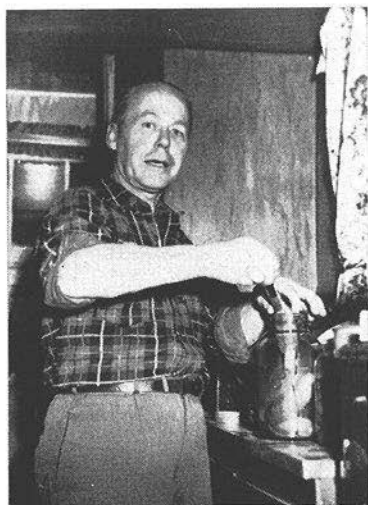
ELLEN SPECHT
Publicity, Public Relations



MARY NEUBERGER
College Nurse



A good year for the GOP



Dill?



It's this way, chillun . . .



MARIE SWALLOW
Training School Office



CAROLYN ROLFSON
Administrative Assistant



MARY ELLEN PIOTROWSKI
Main Office



TOULA MARROS
Main Office



SIDONE ANDERSEN
Record Office



GRACE PEHOSKI
Main Office



JOANNE LUND
Record Office

STUDENT INDEX

- Abrahamson, Sylvia — 9, 42, 48, 52, 85
Achenreiner, Shirley — 37, 43, 64, 106
Albers, Thomas — 34
Albert, Eugene — 37
Albrightson, Diana — 34, 44, 57, 66, 84, 85
Allen, Alice — 38, 45, 64
Allen, Dorothy — 42, 64, 84
Allen, Kathryn — 17, 44, 45, 55, 64
Altenburg, Arlene — 11, 42
Amburgy, John — 35, 98
Ampe, Bernard — 33
Anderson, Gene — 28, 47, 61, 63
Anderson, Grace — 44, 85
Anderson, John — 35, 66
Anderson, Lavern — 48, 85
Anderson, Morris — 37
Anderson, Ray — 31, 45, 61, 89, 91, 98, 123
Anderson, William — 45, 56, 87
Andrews, Oliver — 19, 48, 94
Anklam, Lillie — 38, 84
Anunson, Gary — 31
Arndt, Dorothy — 35, 43, 51, 63, 78, 106
Aronson, Charlotte — 31, 40, 52, 81
Averill, Harry — 37, 94
Axtell, Rosemary — 38, 42, 44
- Bach, Robert — 91
Baerenwald, Gerald — 32, 60, 81, 107
Bahr, Nadine — 33, 42, 52, 63, 88, 98
Barrett, Pat — 10, 42
Bartelt, Mary — 33, 45, 53, 106
Bartosz, Jerry — 29, 61, 62
Bassler, Don — 41
Bauer, Eunice — 13, 40, 41, 80
Baumer, Mary Ann — 31, 42, 53, 64
Bechard, Richard — 94, 107, 123
Becker, Janice — 36
Benson, Margie — 32, 57, 65
Benz, Donald — 14, 41, 73
Bergelin, Janet — 51, 64
Berkhahn, John — 32, 50
Beste, Robert — 21, 48, 59
Bestul, Howard — 37, 66
Bigalke, Gordon — 32, 50, 85
Billmeyer, R. — 37
Bird, Nancy — 38, 42
Blaskey, Germaine — 38, 44, 64
Blomiley, Robert — 98, 124
Bloom, Diana — 38, 42
Boettcher, Jerry — 31, 46, 58, 63, 86
Bogaczyk, Steve — 15, 60
Bogsted, Lois — 38, 63, 85
Bohler, Wallace — 41
Boldig, Jerry — 34, 98, 107
Borja, Felisa — 33, 45, 64
Bostad, Robert — 94, 98, 107, 124
Bowles, Vivian — 38
Brasch, Richard — 38, 85
Bradley, Mary — 37, 64
Brandt, Jack — 29, 48, 95
Bras, Annette — 35, 66
- Braun, Albert — 33
Breese, Robert — 41, 79
Breitenfeldt, Carmen — 37, 78
Breyman, Erna — 33, 44, 45, 48, 53, 65, 85
Bricco, Virginia — 33, 44, 48, 64, 78, 81, 84, 106
Briscoe, Lyle — 32
Brittnacher, Mary — 24, 40, 43, 51, 52, 64, 78, 106
Brocker, Frank — 37, 79
Broeren, Roberta — 42, 84, 106
Bronk, Sally — 26, 43
Bruha, John — 21, 38, 48, 63, 80, 87, 108
Bruha, Richard — 21, 45, 59, 63, 87
Brychel, Rudy — 35
Buchberger, Claude — 33
Buchberger, Pat — 36, 98
Buchholz, Wayne — 32, 107
Buehler, Lorraine — 36, 66
Buhrdorf, Joann — 32
Bullock, Penelope — 33, 45, 50, 54, 83
Burant, Walter — 33
Butler, George — 34, 41
Butts, Joanna — 33, 44, 48, 52, 64, 79, 106
- Cable, Virginia — 22, 46, 47
Carlson, Lester — 34, 59
Caskey, Phyllis — 23, 27, 66, 79, 81
Chaffee, Glenn — 34
Chapman, Joanne — 31, 65, 78, 85
Charlesworth, Ruth — 33, 42, 53, 64, 78, 84
Cherney, Lucille — 35
Christenson, James — 36
Christoffersen, RoseMarie — 31, 45, 52, 78, 106
Clark, Glenna — 19, 48, 53, 66, 79, 83
Clark, James — 79
Clayton, Judy — 56, 80, 84
Clayton, William — 15, 34, 40, 47, 59, 62, 87, 107
Collins, Grace — 33, 52, 64, 84
Collins, Larry — 36, 98
Colrue, Clara — 26, 43, 63, 84
Connor, Sarah — 20, 47, 56, 62
Conover, Kathleen — 33, 44
Conway, William — 68, 84, 103
Cook, Janice — 34
Cook, Ray — 33, 41, 65, 87, 105
Corliss, Carol — 31, 45, 50, 56, 62
Court, Nancy — 33, 42, 53, 84, 85
Cram, Luella — 34, 42, 51, 85
Crook, Betty — 32, 57, 78
Crook, Jack — 37, 94, 97
Cuff, Joann — 31, 42, 57
Curtis, Eleanor — 22, 45, 48, 51, 53, 62, 77
Czerniewski, Joan — 16, 41, 64, 81
Czerniewski, Rita — 36, 51, 77, 78, 81
- Daanen Carol — 37, 43, 64
Dahm, Dona — 23, 44, 45
Daniel, Jo — 37, 51, 64, 85, 106
Davidson, Sidney — 35, 94
Davis, Rex — 35, 98
Daye, Bentley — 35
Dedeker, Dennis — 41

- De Guire, Frank — 28, 47, 50, 59, 62, 64, 87, 105, 107
- Dehlinger, Robert — 21, 45
- DeLaura, Robert — 33
- Derge, Patricia — 13, 80
- Derge, Richard — 86
- Dietsche, Gerald — 34, 41
- Dill, Marjorie — 45, 106
- Diver, Jeannette — 32
- Domack, Elaine — 33, 64
- Dombroske, Irene — 35, 64
- Dopp, Arvid — 37
- Doran, Teresa — 38, 43
- Douglas, Kelly — 18, 48, 58, 71, 94, 97
- Drechsler, Henry — 24, 40, 43, 64, 79, 86, 90
- Drew, Dwaine — 41, 48, 60
- Drifka, John — 35
- Due, Alton — 34, 94, 105, 107
- Dutcher, Howard — 35
- Dzurick, Lucille — 38, 64
- Ebel, Gerald — 34
- Edmund, Caryl — 31, 55, 65
- Eide, Ellen — 33, 42, 82, 84
- Ekvall, Bonnie — 35, 85
- Ellicson, Dale — 33
- Elsen, Ann — 17, 44
- Engbretsen, Gloria — 35, 51, 66, 84
- Enstrom, Robert — 37
- Eves, Parr — 28, 41, 86
- Extrom, Donna — 31, 40, 41, 64, 106
- Fabich, Carole — 36, 44
- Facklam, Edmund — 15, 40, 41
- Falk, Betty — 37, 63
- Farris, Mark — 38, 64
- Fehrenbach, Neal — 33
- Figel, Pegge — 31, 42, 56, 100
- Flint, Robert — 18, 47, 58, 74, 78, 79, 108
- Forth, Charlotte — 33, 42, 52, 64
- Forth, Leona — 33, 42, 53
- Foster, Mary — 37, 38, 64
- Francis, Catherine — 44
- Freiberg, Ashley — 31, 48
- Frisch, Jack — 38
- Fritsch, Clarence — 17
- Gage, Connie — 31
- Gallistel, Harriet — 43, 64
- Garcia, Peter — 37
- Garfield, Gloria — 37, 65
- Gaylord, Lenore — 38
- Geneske, Alex — 37
- Gerhard, Marjorie — 31
- Gerner, Dorothy — 33, 42, 54, 66
- Giese, Patricia — 33, 56, 81, 85
- Giese, Sally — 38, 44, 64
- Gilbert, Cleo — 34, 42, 57, 65
- Gilbert, Marilyn — 20, 68, 71, 94, 107
- Gilbertson, Dorothy — 34, 57
- Giordana, James — 97, 107, 108
- Gleue, Nancy — 36
- Golowski, Arlene — 38
- Golz, Dianne — 35, 44, 63, 85
- Gosh, James — 34, 45, 48, 64, 73
- Gossage, Marilyn — 9
- Groessl, William — 32, 64
- Grow, Earl, Jr. — 35
- Gruen, Janice — 15, 53, 65, 84, 108
- Gruetzmacher, Carmen — 38
- Gruling, Robert — 24, 40, 60
- Guzman, Beverly — 12, 48, 55
- Habeck, Roy — 25, 43, 51, 63, 74, 81, 108
- Hackbart, Roy, Jr. — 34, 58, 63, 74, 86, 94, 107
- Hackel, Naomi — 24, 43, 72
- Hager, Ronald — 38
- Hahn, Bernice — 36, 42, 63
- Hale, Charlotte — 38, 64, 84, 106
- Hales, Jerome — 35
- Hall, Richard — 29, 41, 50
- Hammersmith, Bob — 63
- Hanke, Richard — 64
- Hanson, Barbara — 31, 50, 56, 62, 91
- Harder, Carol — 35
- Harmon, Ray — 34, 108
- Hartleb, Marlene — 22, 44, 48, 53, 83, 108
- Hazelwood, Phyllis — 25, 43, 51, 64, 81, 85, 108
- Hedin, Carol — 38, 44, 66
- Hedquist, Eric — 32, 58
- Helbach, Hazel — 34, 44, 64
- Held, Benita — 33, 50, 56, 84
- Helixon, Pat — 34
- Helland, Edith — 36, 43, 63
- Hellmer, Andrew — 34
- Helsten, Jean — 35
- Henschel, Joyce — 38, 43
- Herman, Nancy — 42, 79
- Herrington, Norma — 50, 55, 100
- Herrmann, Donald — 32, 41, 44, 102
- Heuer, Edwin — 13, 40, 73, 74, 87
- Higgins, Thomas — 35
- Hiller, Alice — 33, 44, 66
- Hilmer, Donald — 37
- Hilmer, Richard — 37
- Hodell, Robert — 34
- Hoelt, Phyllis — 33, 42, 85
- Hofbauer, John — 35
- Hoffman, Frank — 17, 48, 58, 75
- Hofman, Vivian — 9, 42, 55, 62
- Holen, Geneva — 36, 106
- Holmgreen, John — 33, 85
- Holt, Carol — 33, 50, 84
- Hoppa, Bernard — 35
- Hubbard, Grace — 22
- Huberty, Carl — 35, 64, 98
- Hudy, John — 35
- Huetli, Beulah — 33, 42, 64, 78, 85
- Hunter, Ronald — 34, 83, 94, 102, 107
- Hurlbut, Dave — 37, 58, 84, 102, 103
- Hurlbut, Ken — 102, 103
- Hurrish, Dan — 47
- Hurrish, Gene — 48, 59, 74, 107
- Hutter, Irvin — 33, 41, 83, 87
- Hvass, Mariys — 36, 51, 63, 77
- Isberner, Helen — 11, 42, 55, 65, 66, 70
- Isherwood, Patricia — 36

Jackson, Richard — 38
Jacobsen, Edward — 32, 48, 65, 104, 107
Jacobus, Richard — 32, 82, 86
Jaeger, Marie — 35
Janke, Robert — 36
Jansen, Richard — 18, 41, 45, 68
Jarnick, Phyllis — 18, 44, 45, 48, 52, 77
Javorek, Marcella — 36, 40, 64
Jensen, Deloris — 37
Jensen, Donald — 37
Jersey, David — 35, 94
Jersey, Joanne — 31, 57
John, Claire — 36, 42, 66
Johnson, Dorothy — 25, 40, 43, 53, 65, 73, 81
Johnson, James — 37
Johnson, Keith — 34
Johnson, R. — 107
Jolivette, Burton — 37
Jones, Helen — 27, 43
Jones, Joyce — 27, 43, 63, 66, 84
Junior, Bernhard — 102
Jurgella, Carl — 38, 94, 107

Kabat, Charlene — 33, 52, 64, 85
Kalepp, Bonnie Lou — 34, 54, 63, 83
Kampenga, Amy — 28, 46, 47, 48
Kapitzke, Donald — 37, 73
Karau, Melvin — 33
Karls, Stanley — 64, 94, 95
Kearns, Rose — 11, 42, 53
Kellerman, Wilma — 34, 44
Kennedy, Jeanette — 35, 44, 85
Kilgas, David — 36
Kimber, Bruce — 35
Klaus, Charles — 37, 64
Kline, Arlynn — 61
Klose, Peter — 37, 73
Kmiotek, Edward — 34, 48, 85
Knop, Phyllis — 37, 44
Knudson, Eugene — 35
Koehn, Eugene — 34, 41, 79
Kohls, William — 32, 36, 40, 41, 63
Koller, Mary Jane — 37, 64, 84
Konopacky, Robert — 29, 47
Kopperud, Karen — 33, 44
Korn, Elmo — 14, 60
Korn, Harriet — 14
Kott, Donald — 31, 60
Krause, Deloris — 37, 43, 63, 106
Krause, Naomi — 35, 85
Kraut, Ione — 36, 66
Kristianson, Robert — 15, 40, 45, 50, 66, 87, 79
Kritz, Kenneth — 34, 57, 80
Krohn, Albert — 43
Krouze, Robert — 33
Krueger, Gary — 34, 58, 78, 87
Krueger, Roland — 29, 81, 86, 106, 107
Kryshak, Gregory — 36
Kubisiak, Ronald — 35
Kubisiak, Shirley — 46
Kucera, Ruth — 34, 44
Kuhnke, Dorothy — 31, 44, 45, 54, 62
Kusserow, Betty — 32, 40, 42, 53, 63, 71, 81, 83
Kussman, Gene — 35, 78
Kussman, Richard — 14, 41, 59

Lacina, William — 35, 63
LaLeike, Phil — 35
Lane, Joy — 42, 50, 53, 63, 80, 83
Lane, Leonard — 32, 35, 51, 84
Lang, Marcella — 27, 33, 43, 64
Lang, T. — 94
Langfeldt, Lois — 33, 53, 64
Langton, John — 32, 61, 102
Larson, Ronald — 38
Laszewski, Roy — 23
Leahy, Kathleen — 9, 52, 64, 78
Lehman, Mary — 33, 63, 106
Lehmann, Gladys — 33, 45, 76, 78, 85
Leith, Donald — 51, 57
Leitner, Margaret — 24, 40, 63, 85
Lemancik, Edmund — 35
LeMere, Marlene — 36
Lensmire, Joan — 26, 43, 64
Liebau, Gary — 35
Lodzinski, Janet — 35
Lord, Ada — 38
Lund, Mary — 12, 42, 52
Lund, Thomas — 22

Mallow, John — 19
Malchow, Nancy — 11, 42
Malick, Patricia — 33, 42
Mansour, Nabeel — 36, 73, 86
Marchel, Aurette — 33, 43, 64
Marko, Richard — 32, 98
Marquard, Rhody — 34, 107
Marros, Katherine — 49
Marros, Virginia — 53, 79
Martin, Roland — 34
Mayer, Donald — 15, 41
Maynard, Susan — 36, 85
McAuley, Merle — 36, 65
McCamlax, Peter — 36
McEwan, J. — 37
McCauley, Mary — 37
McIntee, Radine — 31, 44, 54, 85
McLees, Delores — 33, 54
McMahon, Robert — 28, 41, 45, 60
McMahon, Terry — 36, 102
McMillion, James — 36
Meister, Arline — 40, 41
Miller, Dolores — 31, 50, 53
Miller, John — 34, 47, 70, 78, 87
Miller, Lee — 45, 48, 64, 85
Miller, Norbert — 94, 97, 107
Miller, Sally — 37, 84
Miller, Veronica — 37, 64
Miller, William — 31, 45
Mitchell, Joan — 37, 66
Mlada, Margaret — 12, 42
Moe, Carol — 31
Moll, Joyce — 11, 42, 53, 63, 75, 82, 85
Monroe, Dennis — 37
Moon, Howard — 36, 86
Morgan, Elaine — 36, 64, 84
Morse, Leal — 37
Mortenson, Allan — 32, 45, 47, 63, 79
Moss, Doris — 37, 38, 100, 108
Moss, Vernon — 84

- Mozuch, Kathleen — 38, 64, 84
 Mrochek, John — 33
 Mueller, Claire — 33, 45, 48, 85
 Mulady, James — 58, 80
 Munderloh, Jerome — 36, 63, 94, 102, 107
 Mundt, Ray — 30, 75, 107
 Murphy, Billie — 36

 Neale, Joan — 34
 Needham, Jeannette — 36, 43
 Nelson, Barbara — 11, 48, 52, 84, 108
 Nelson, Donald — 36
 Nelson, Mary — 34, 85
 Nelson, Meredith — 37
 Nelson, Patricia — 36, 44, 65, 85
 Netzel, Robert — 34, 41
 Newby, Yolanda — 34, 81
 Newhall, Dolores — 18, 44, 45, 52, 65
 Newman, James — 45, 115
 Nomady, Paul — 34
 Nordlund, Leonard — 37
 Noreika, Michael — 37, 64

 Olsen, Theodore — 34
 Olson, Allen — 32, 45, 66
 Olson, Carter — 37
 Olson, Lynnette — 52, 85
 Omernik, Robert — 37
 Orghish, Barbara — 38, 42
 Ottmon, Edward — 36, 64

 Page, Donald — 36, 73
 Palmer, Dorothy — 24, 43, 57
 Panke, Mary Anne — 31, 42, 34, 64
 Papke, Ross — 21, 45, 47, 79, 81
 Parker, Vernon — 36
 Parkin, Arlon — 13, 40, 41
 Parmelee, Doyno — 37
 Paski, Beverly — 38, 64
 Paulson, Donald — 38
 Paulson, Gene — 31, 45, 59, 73, 108
 Paulson, Robert — 32, 45, 54, 108
 Pautz, Nancy — 9, 42, 55, 62, 70, 82, 85
 Payne, Florence — 12, 42, 46
 Peabody, Ray — 39, 44
 Pease, Terry — 36
 Peplinski, Robert — 36
 Perlewitz, Rita — 31, 42
 Perrodin, Susan — 37
 Peyovich, Robert — 36, 79
 Pfeiffer, James — 33
 Pfiffner, Mary — 19, 45, 48, 51, 52, 62, 64, 85
 Piatt, John — 32
 Pickert, Jack — 37
 Piehl, Jackie — 32, 57
 Pierce, Larry — 37
 Pierre, Winnifred — 17, 44, 45, 47, 50, 54, 64
 Pietz, Alice — 36, 43, 66, 106
 Pinkerton, Joyce — 17, 56
 Pionke, Donald — 62, 64
 Plainse, Delores — 23
 Plank, Edward — 31, 87
 Plumb, Homer — 38, 77, 87
 Poad, Patricia — 10

 Podrez, Lillian — 38
 Polivka, Bernadelle — 31, 44, 46, 55, 79
 Polzin, Jack — 15, 40, 41, 47
 Polzin, Mary — 37, 42, 51
 Polzin, Rosemary — 34, 44, 45, 48, 65
 Pomerening, Faith — 36, 43, 63
 Popeck, John — 23, 45, 46, 64, 80, 83, 94
 Prohaska, Edward — 37, 46
 Purchatzke, Bryan — 13, 41, 94, 107
 Purchatzke, Leroy — 33, 48, 59, 63, 83, 87

 Quall, Sandra — 37, 42

 Raaths, Ardis — 15, 40, 41, 57, 63, 81
 Raddant, Charlotte — 36, 44, 83, 106
 Raddant, Maynard — 41
 Raschka, Mary — 31, 40, 41, 51
 Reda, Frank — 27, 43, 79, 86, 108
 Redding, Ervin — 36, 123
 Redding, Richard — 36, 98
 Reed, Robert — 37, 85
 Reiland, Tere — 42
 Renden, Betty — 34, 42
 Ressler, Richard — 34, 64
 Reznichak, MaryJo — 31, 40, 45, 46, 50, 65
 Rhode, Ransom — 20, 41, 45, 105
 Richard, Howard — 36
 Richmond, Arlene — 45
 Rickel, Patricia — 42, 56, 85
 Rickfort, Phyllis — 33, 44, 51, 65
 Rindfleisch, Dale — 31, 59
 Robinson, Charles — 14, 40, 41, 68
 Robinson, Lola — 36, 43
 Roloff, Kenneth — 94, 107, 124
 Rose, Sally — 37, 41, 51, 65
 Rosin, Lorraine — 37, 43, 106
 Ross, Dave — 46, 63, 81, 86, 102
 Rothamer, James — 31
 Rothman, Dejon — 10, 42, 73, 75
 Ruhsam, William — 36
 Rutherford, Tom — 33

 Salvin, Theodore — 28, 84
 Sandberg, John — 45, 59, 94, 108
 Sanks, Joe — 94, 95, 98, 107, 123, 124
 Sarbacher, Jean — 10, 42, 56, 82
 Sautner, James — 37, 73
 Schade, H. — 36
 Schadewald, Frederic — 65, 78, 98, 99, 124
 Schaefer, Verna — 22, 44, 45, 54, 66, 84
 Scheelk, Joyce — 36, 63, 84
 Scheels, Marion — 26
 Schellin, Janus — 44, 63
 Schieb, Eileen — 36, 51, 100, 106
 Schlack, Alois — 36
 Schmeackle, Wilma — 20, 45, 53
 Schmidler, Frank — 61, 108
 Schmitt, Mary — 26
 Schnauffer, Trudy — 64, 79, 84
 Schneeberg, David — 34, 65
 Schneider, Roger — 34, 86
 Schommer, Mark — 32, 58, 94, 98, 107
 Schram, Mildred — 42
 Schramke, George — 32

- Schrank, Dennis — 40, 60
 Schrank, Jim — 31
 Schreier, Robert — 36, 73
 Schroeder, Janice — 33, 44, 45, 52, 84
 Schroeder, Lois — 38, 44, 65, 82
 Schroeder, William — 38, 94, 98, 107
 Schuelke, Marianne — 64
 Schuett, Marlene — 37, 43, 66, 72
 Schuh, James — 36, 87
 Schultz, Jane — 33, 45, 53, 84
 Schultz, Patricia — 37, 42, 66
 Schultz, Vivian — 55
 Schultz, Grace — 36, 82, 84
 Schwarze, Gilbert — 37
 Schweinler, William — 34, 65, 72, 87
 Schwentner, Kathryn — 31
 Scribner, Sally — 46, 76
 Seagraves, Conrad — 107
 Seefeldt, Ralph — 37, 63, 102
 Seif, Diane — 33, 45, 53, 66, 80, 84
 Sheets, Shirley — 33, 42, 52
 Sherfinski, Belvina — 16, 40, 41, 64
 Silkyta, Hilda — 38, 63
 Silverman, David — 34, 47, 60, 80
 Skibicki, Sam — 36, 47
 Smit, Joanne — 37, 84, 106
 Smith, Donald — 36
 Smith, Dorothy — 36, 85
 Smith, Harold — 38
 Smith, Joyce — 34, 42
 Smith, Marguerite — 34, 44, 65, 66, 80, 85, 100, 106
 Smith, Mary — 33, 42, 53, 65, 73, 74, 78, 84
 Sobczak, Ardelle — 38, 64, 106
 Soetebeer, John — 38, 73
 Sohr, Charles — 33, 85
 Sommers, Ray — 21, 45, 48, 64, 105
 Sonnenberg, Shirley — 32, 41, 45, 57, 78, 81
 Sonnentag, Wallace — 33, 85
 Sontag, Norman — 36, 94
 Spaulding, Willard — 28, 41
 Stankevich, Kathryn — 18, 44, 45, 46
 Stasko, James — 36, 77
 Steffen, Harvey — 33, 65
 Stelchek, David — 36, 87
 Stephanek, Fred — 48, 85
 Stertz, LaNore — 33
 Stimac, Russ — 94
 Stogbauer, Vernon — 37, 85, 108
 Strasser, Richard — 82
 Suckow, Gloria — 33, 42, 52, 68, 84, 85
 Suehring, Jeanette — 34, 41
 Summers, Joan — 16, 41, 64, 81
 Sutton, Sharon — 32, 42, 56, 65
 Swanson, Harold — 34
 Swendrzynski, Mildred — 37, 64, 72

 Tallmadge, Ruth — 31, 48, 65, 84
 Tanner, Douglas — 32, 107
 Tate, Suzanne — 30, 46, 47, 79
 Tauchen, Alice — 10
 Taylor, Donald — 51
 Teetzen, Ruth — 19, 45, 54
 Teetzen, Willis — 25, 33, 43, 63, 81
 Tellock, Lavonne — 37, 43, 65

 Thalacker, Margie — 42, 65
 Thimke, Joan — 41
 Thomander, Marie — 37, 51, 85
 Thompson, Delores — 34, 42, 51, 66
 Thompson, Donna — 31, 44, 45, 66
 Thompson, Dorothy — 9, 42, 52, 85, 123
 Thompson, Leslie — 98, 99, 107, 124
 Thurston, Janice — 34, 43, 44, 54, 72
 Thurston, Joyce — 36, 51, 106
 Timm, Betty — 36, 63
 Tood, Dean — 31
 Tolsted, David — 36
 Torzewski, Elizabeth — 52, 84
 Toser, Richard — 30, 65, 105
 Trotter, Kent — 31, 43, 84
 Turner, Garie — 32, 45

 Ullsperger, Robert — 32, 45, 47, 58, 105
 Untiedt, Joanne — 37, 51, 64, 85

 Van Ornum, Janet — 36, 44
 Van Stedum, James — 36
 Varney, Patricia — 54, 85, 100
 Vaughn, Roberta — 38, 51, 65
 Vincent, Pauline — 36, 51
 Vissers, Donald — 23, 45, 48, 61, 64
 Voelker, Iris — 36
 Voight, Joe — 38, 63
 Voight, Rosella — 79, 84
 Vomastic, Gloria — 37, 43
 Votava, Charles — 33, 85
 Vreeland, Keith — 38

 Wade, Royce — 31, 40, 41, 58, 65, 86
 Wagner, Irving — 34, 64, 80, 86
 Wagner, Jean — 25, 43, 52
 Wagner, Mary — 31, 44
 Wall, James — 37
 Wallner, Dorothy — 25
 Walrath, Donna — 36, 43, 51, 63
 Walrath, Mary — 36, 43, 51, 63
 Wasserman, Kenneth — 38
 Waterman, Connie — 38
 Weaver, Ellis — 38
 Weber, Eugene — 36, 73, 98, 103
 Weber, Robert — 36
 Weisbrot, Anne — 36, 51, 64, 78, 84
 Weisbrot, Barbara — 12, 42, 53
 Weisen, Pauline — 31
 Welniak, Alvina — 64
 Wesley, Frank — 20, 48, 84
 West, Beverly — 36, 51, 65
 Whitford, Joan — 37
 Wieman, Carl — 63, 98
 Wiersma, William — 20, 45, 48, 68
 Wilde, Donald — 41
 Wilde, Raymond — 43, 65
 Wilk, Thelma — 33
 Wilkinson, James — 50, 60
 Williams, James — 33, 65, 79, 85, 86, 108
 Winterfeldt, Robert — 38, 86
 Wirkus, Thomas — 51, 64, 82, 85
 Wislinsky, Ronald — 34, 86, 94, 95, 102
 Wolfe, Jean — 36, 63

Wood, Roger — 32, 41, 45, 48
Wurtzel, John — 37
Wyman, Robert — 36
Wysocki, Joanne — 32, 46, 48, 84

Young, Roland — 33

Zander, Shirley — 36, 43, 66
Zarda, Elaine — 68

Zastrow, Marlene — 13, 40, 41, 55, 63
Zellinger, Elaine — 32, 37, 65, 79, 84, 108
Zellinger, Joyce — 44, 50, 53, 65, 79, 85
Zeng, Walter — 37, 63
Zerneke, Joyce — 33, 44, 51, 84
Ziebarth, Beverly — 16
Zieher, Glen — 36, 74
Zieman, Phil — 34, 41
Zimmermann, Bernice — 38
Zukoski, Harold — 31, 59

ADMINISTRATIVE AND FACULTY INDEX

Hansen, William — 110

Andersen, Sidone — 120
Anderson, Dr. H. — 119

Bainter, Monica — 115
Blodgett, Alice — 113
Boylan, Kenneth — 116
Burroughs, Leland — 46, 113

Carlsten, Edna — 113
Crow, Frank — 114
Cutnaw, Edith — 117

Davis, Doris — 113, 116
Davis, Mildred — 116
Diehl, Leah — 118
Doudna, Quincy — 111

Eagon, Burdette — 40, 118
Epple, Arol — 115

Faust, Gilbert — 48, 115

Glennon, Bertha — 113
Gotham, Raymond — 111

Hansen, Alice — 118
Hanson, Gertie — 116
Harrer, Alf — 114
Harris, Albert — 114
Heel, Helen — 118

Isaacson, Pauline — 113

Jenkins, Warren — 111

Kampenga, Dorothy — 118
Kampenga, Nelis — 89, 114, 118
Kerst, Marjorie — 118
Keyser, Jessiemae — 117
Knutzen, Norman — 87, 113, 119

Lewis, Robert — 116, 119
Lund, Joanne — 120
Lyness, Arthur — 65, 115

Marros, Tola — 120
Mason, Syble — 114
Michelsen, Peter — 48, 114
Morrison, Clifford — 118
Moser, Miriam — 116

Neuberger, Mary — 119
Newman, James — 115
Nixon, O. — 116

Pehoski, Grace — 120
Piffner, Elizabeth — 112
Pierce, Burton — 117
Pierson, Edgar — 115

Quandt, Hale — 96, 117

Ravey, Phyllis — 42, 118
Reppen, Nels — 114
Rightsell, Raymond — 45, 111, 119
Ritchie, Margaret — 114
Roach, May — 43, 64, 113
Roberts, John — 96, 117
Rolfson, Carolyn — 120

Samter, Mary — 117
Schmeeckle, Fred — 115
Smith, Mary Elizabeth — 42, 46, 113
Specht, Ellen — 119
Specht, Raymond — 47, 116
Steiner, Herbert — 112
Swallow, Marie — 120

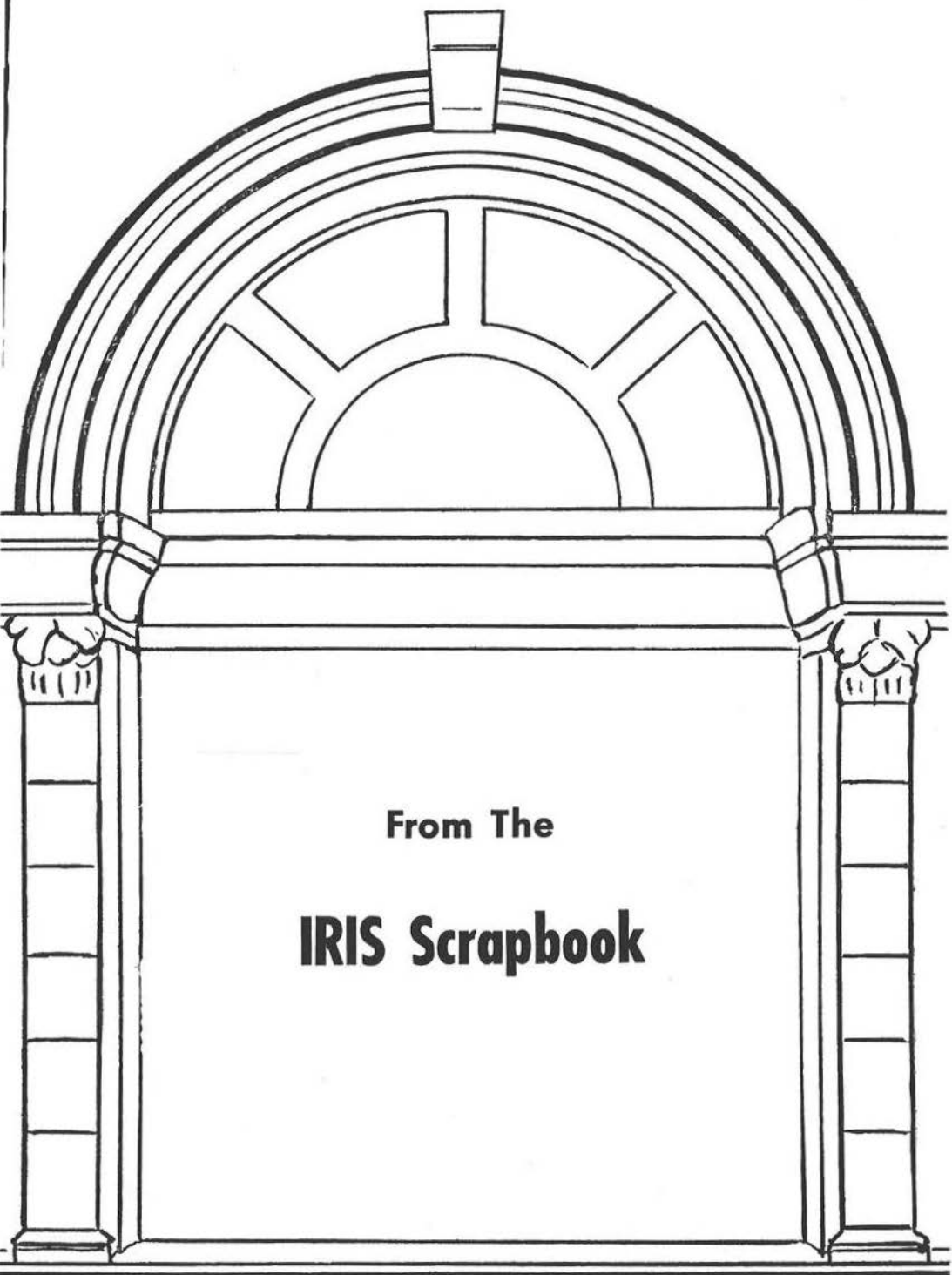
Tolo, Leila — 114
Trytten, Roland — 115

Ullman, Mary — 40, 117

Van Arsdale, Gladys — 42, 117

Wievel, Bernard — 115
Williams, Mildrede — 117
Wilson, Emily — 116
Winkler, Cecilia — 64, 117

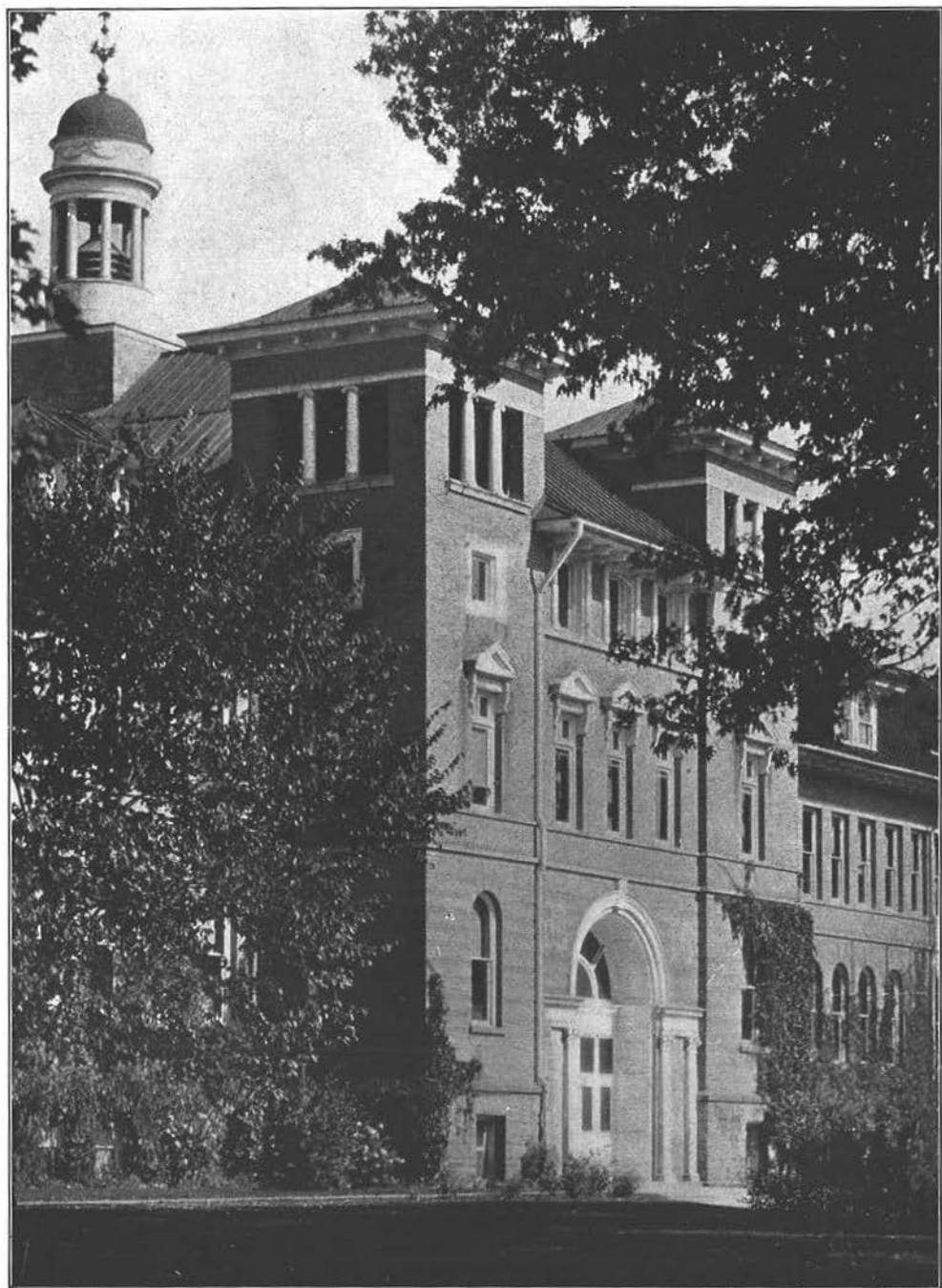
Youmans, Rita — 116



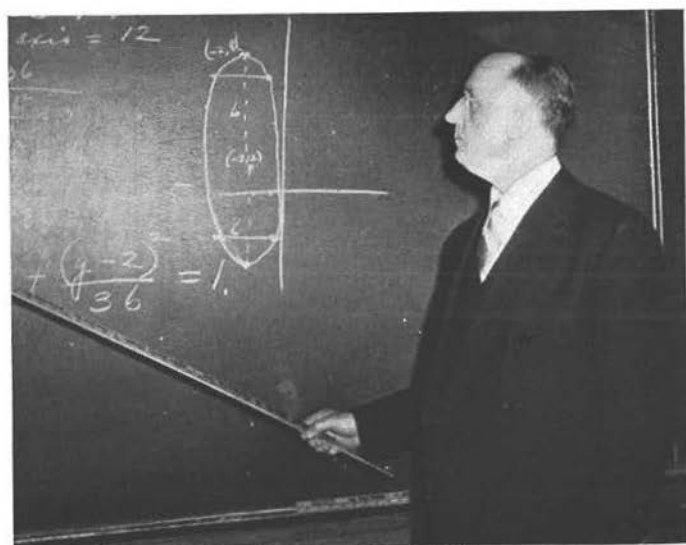
From The
IRIS Scrapbook





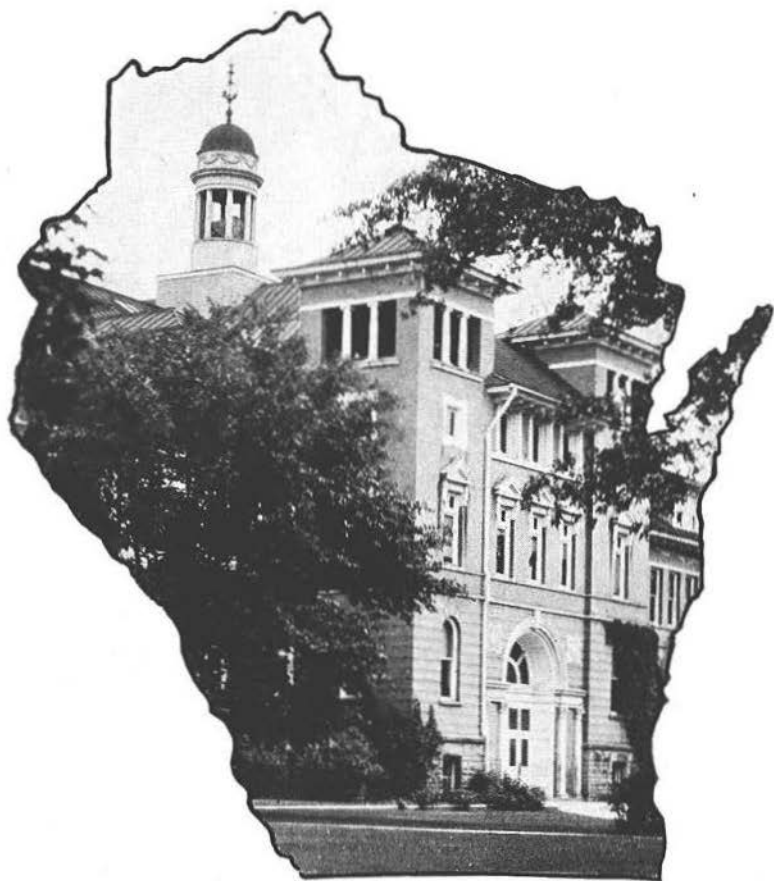




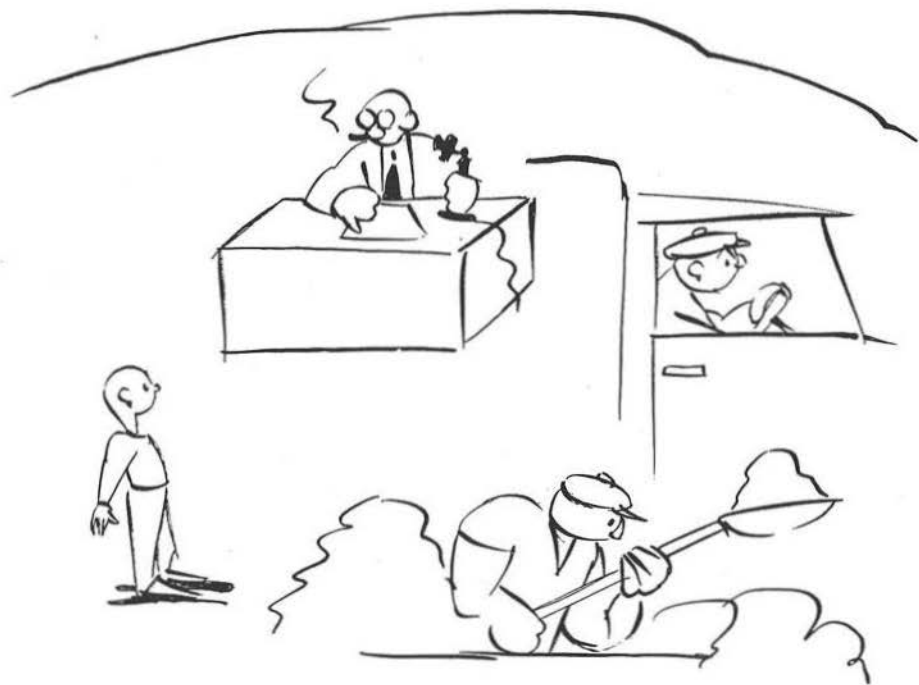








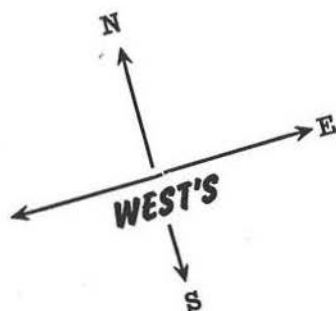




AUTOGRAPHS

The Iris staff extends its thanks to the many people who made this book possible, especially the sport's department of the Stevens Point Journal and our advertisers who are:

Altenburg's Dairy	Krembs
Automobile Dealers Association	Le Roy's
Arenberg's	Lullabye Furniture Corp.
Badger Paint and Hardware Stores, Inc.	Moland Bros. Trucking Co.
Belke Lumber and Mfg. Co.	National Bookbinding Co.
Big Shoe Store	Nigbor Furs
Boston Furniture and Funeral Service	Normington's
Breitenstein Co.	Otterlee's
Campbell's Dept. Store	Parkinson's
Campus Cafe	Peickert's Meat Market
Citizens National Bank	Penny's
College Counter	Phillip's Studio
College Eat Shop	Polly Frocks
Continental Clothing Co.	Point Cafe
Delzell Oil Co.	Quality Store
Emmons	Scribners Dairy
Helen Fierek Millinery	Shippy Shoe Store
Fisher's Dairy	Slicker's Texaco Service
First National Bank	Sorenson's Flower Shop
Fox and Lyric Theaters	Sportsman Store
Frank's Hardware	Sport Shop
Gamble Store	Stevens Point Beverage Co.
Graham-Lane Music Shop	Stevens Point Daily Journal
Gwidt's Drug Store	Surplus Store
Hannon's Drugs	Taylor's Drug Stores
Hardware Mutuals	Vetter Manufacturing Co.
IGA Food Stores	J. A. Walter Florist
Joern's Bros. Furniture Co.	Westenberger's Drug Store
Joe's All Modern Yellowstone	Welsby's
Karp's Bootery	Whiting-Plover Paper Co.
Kostka Furs	Wilshire Shop
	Wisconsin Public Service Corp.
	WSPT



Be like the rest,
Get dairy products at WEST'S.

Plover, Wis.



**GWIDT'S DRUG
STORE**

*A registered Pharmacist
on duty at all times*

305 Main

Phone 148

Congratulations
to the

Seniors

**JOERNS BROS.
FURNITURE
COMPANY**

500 Shaurette

Phone 53

To the Graduate:

Best of luck and success in the future

**Automobile Dealers Association
Stevens Point, Wisconsin**

COMPLIMENTS of
KOSTKA FURS

Stevens Point



For the finest tasting
meats, poultry, sea food and
sausages shop at

**PEICKERT'S
MEAT MARKET**

Phone 68



"Professional Prescription Service"

THE
REXALL DRUG STORE
IN
STEVENS POINT

WESTENBERGER'S

"Across from the Postoffice"

Phone 27



He: "My, you look lovely tonight."

She: "Why thanks, WELSBY'S did my
dry cleaning just right."

WELSBY'S

446 Clark St.

Phone 688



Pictures keep fond memories Forever

DON WARNER STUDIO

Across from the College

*Anywhere... anytime...
Coca-Cola is
so refreshing*



BOTTLED UNDER AUTHORITY OF THE COCA-COLA COMPANY BY
LA SALLE COCA-COLA BOTTLING COMPANY



STOP!

If you need Carpeting,
Linoleum, Window Shades,
Venetian Blinds. Come in and
see the outstanding quality and
Workmanship that we can offer you.

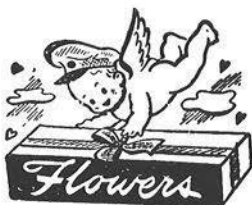
**THE HOME
FURNISHINGS INC.**

121 North Second Street

COMPLIMENTS
OF THE
SPORT SHOP

"Say it with Flowers"

**J. A. WALTER
FLORIST**



Plants and cut flower arrangements
with distinction

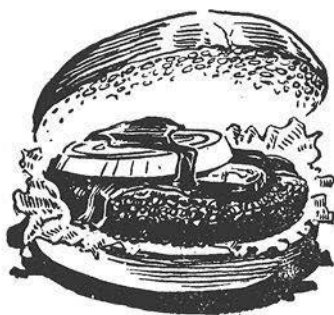
110 N. Michigan Ave.

Phone 1629

The Quality Store



WOMEN'S, MISSES and JUNIORS
wearing apparel.



**JOE'S
ALL MODERN
YELLOWSTONE**

HOTEL & CABINS

1 Mile East of the College on 10

**CITIZENS NATIONAL
BANK**

425 Main St.

Phone 77

Children . . .



and grown-ups, enjoy smooth FISHER'S
ice-cream as well as their other fine
dairy products.

FISHER'S DAIRY

122 N. 2nd St.

Phone 1902

*Congratulations
Graduates
To under graduates
we'll see you next year*

**TAYLOR'S
DRUG STORES**

111 Strongs Ave. 752 Church St.
PHONE 3 PHONE 49

BIG SHOE STORE

Your headquarters for
famous nationally advertised
footwear: Sport Pals, Friskies,
Lolos, Dreensteps.

419 Main St.

Stevens Point

"CENTRAL WISCONSIN'S LARGEST
UNDERSELLING SHOE STORE"



X-RAY FITTING

SHIPPY SHOE STORE

**SORENSEN'S FLOWER
SHOP**



See Your Friendly Florist
for HOME GROWN FLOWERS

COLLEGE EAT SHOP



The Finest in Town

Dinners

Short Orders

Fountain Service

Across Main from Nelson Hall

DON'T buy furniture
until you see

Krembs
APPLIANCES • FURNITURE • HARDWARE

APPLIANCES
FURNITURE
HARDWARE

On the famous Market Square
Phone 2502



Congratulations SENIORS
The College Counter

Your Education Is Not Complete

UNTIL

You Have Discovered That

Permanized

KEEBORD *Typewriter Papers Are Better*

WHITING-PLOVER PAPER CO.

Stevens Point, Wisconsin

ARENBERG'S

Fashionable Jewelry

Since 1884

447 Main St.

Stevens Point

HELEN FIEREK

Millinery and Accessories

119 Strongs Ave.

Phone 1605-J

FRANK'S HARDWARE

"Just off the famous Public Square"

117 No. 2nd St.

Phone 2230

Main Street

POINT CAFE

Strongs Ave.

POLLY FROCKS

Women's Apparel

416 Main St.

SURPLUS STORE

Clothing for Men & Boys

On the famous Market Square

GRAHAM-LANE

MUSIC SHOP

Strongs Ave.

Phone 442

**THE
GAMBLE
STORE**

408 Main St.

Phone 1548

**SLICKER'S
TEXACO SERVICE**

216 No. 2nd St.

Phone 583

**FOX & LYRIC
THEATERS****LEROY'S**

Ladies Ready To Wear

205 Strongs Ave.

Phone 787

W S P T

1010 On Your Dial

414½ Main

Phone 2744

ENJOY THE BEST



SCRIBNERS DAIRY

1 mile East on 10

BOSTON
Furniture and Funeral Service

Best Wishes
to the
Graduates

430 Main St.

Phone 250

For

Normington's
Gentle . . . thorough
C L E A N I N G



Normington's
Gentle . . . thorough
L A U N D E R I N G



Phone 380

Home of Old Cabin

COAL

**BREITENSTEIN
COMPANY**

Roofing, Siding, Paint, Plaster,
Cement, Nails, Farm Machinery,
Feed, Coal and Coke,
Fire Tender Stokers

217 Clark St.

Phone 57

KARP'S BOOTERY

"The store of personalized
shoe fitting"

The complete family
shoe store . . .

KARP'S BOOTERY

"On Stevens Point's famous Market Square"



**FURNITURE
CORPORATION**

Stevens Point, Wisconsin

**DELZELL OIL
COMPANY**

Distributors of PHILLIPS 66 Gasoline

Fine Furniture For Children Since 1897

EMMONS

Stationery and Office Supply Co.



Distributors of the
L. C. SMITH — CORONA
PORTABLE TYPEWRITER
"The World's Fastest Portable Typewriter"



ALL BERGS say that

ALTENBURG'S DAIRY

products are the best.

"We Freeze to Please"



HANNON'S DRUGS

- Prescriptions
- Cosmetics
- Luncheons
- Drugs
- Gifts
- Photographic Equipment

"Across from the Fox Theater"



MAD

AT HIGH PRICES?

You'll save money at

PENNEY'S
PENNEY CO., INC.

NIGBOR FURS

"Wisconsin's Largest Furriers"



- EAU CLAIRE
- MILWAUKEE
- GREEN BAY
- STEVENS POINT
- MANITOWOC
- MADISON
- WAUSAU
- BERLIN

Just ask the people who know —
"The SPORTSMAN STORE
is the place to go."



THE SPORTSMAN STORE

446 Main St. Stevens Point

"Next to the Fox Theater"

Member Federal Reserve and F.D.I.C.

After graduation you will be on your own and earning money. What would be better than a savings account at the First National? Even though the amount with which you open your account may be small, it is an important step toward building for your future.

No matter where you locate, you can carry your account with us by mail. We have many customers who do not live here but still carry their accounts with us.

THE FIRST NATIONAL BANK

Stevens Point

Capital & Surplus \$400,000.

Resources over \$8 million

Otterlee's

Jewelry - Gifts

Expert Jewelry

&

Watch Repairing

442 Main St.

Tel. 2031

STEVENS POINT, WIS.

**MOLAND BROS.
TRUCKING COMPANY**

"Keep Your Freight Rollin'

Ship via Moland"

Phone 2298

Want Ads

in the

STEVENS POINT DAILY JOURNAL

Are so easy to order!

SIMPLY CALL 2000

Ask for Miss Adtaker

★ Special Low Subscription rates for all Servicemen and Servicewomen.

★ Fine Printing

Newspaper Office — 114 North Third
(Open during noon hour)

Printing Department — 116 North Third
(Closed during noon hour and all day Saturday)

*So you'll always remember your classmates,
Hardware Mutuals are happy to donate this space
for autographs and messages.*

Insurance for your AUTOMOBILE . . . HOME . . . BUSINESS

Hardware Mutuals.

HARDWARE MUTUAL CASUALTY COMPANY
HARDWARE DEALERS MUTUAL FIRE INSURANCE COMPANY

Stevens Point, Wisconsin · Offices Coast to Coast

AS NATIONALLY ADVERTISED

**STEVENS POINT
BEVERAGE COMPANY**



Bottlers of
— Point Special Beer —
Orange Crush, Lemmy and
other High Grade Soft Drinks

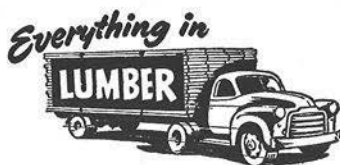
Phone 61



PHILLIP'S STUDIO

“Better From Vetter”

For



Phone 87

**THE
VETTER MANUFACTURING COMPANY**

**BELKE
LUMBER & MFG. CO.**

Cabinet Work

Millwork Roofing
Insulation Lumber
Paint Glass

247 N. 2nd St.

Phone 1304

Stevens Point

Shoes

Accessories



WILSHIRE SHOP

440 Main St.

Stevens Point



Even the wise old owl knows
That the CONTINENTAL is the place for
Clothes.

GLOVES, SCARFS and HOSIERY too;
The dollars you pay are just a few.

**THE CONTINENTAL
CLOTHING COMPANY**

"Across from the Fox Theatre"

**CAMPBELL'S
DEPT. STORE**

Elevator Service

and

Air Conditioned

CAMPUS CAFE

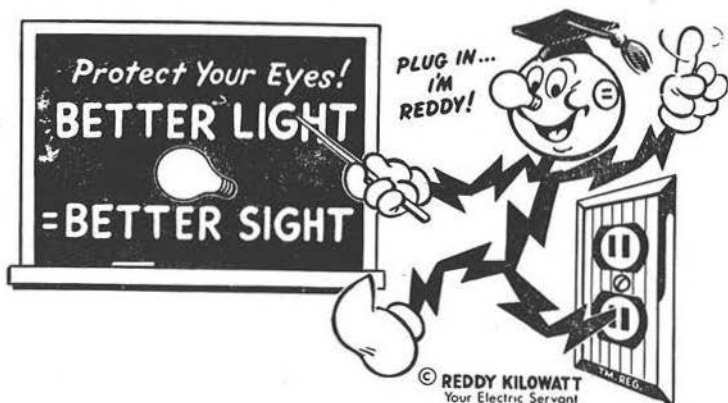
Sandwiches
Short Orders

Breakfast
Fountain

Come and enjoy yourself at our newly
decorated cafe.

Across from the College

Phone 1709



Congratulations **GRADUATES**

WISCONSIN PUBLIC SERVICE CORPORATION

THANK YOU
for the business you have
given us!

And cordial greetings
from the people at

PARKINSON'S

Clothes for Men

**BADGER PAINT &
HARDWARE
STORES, INC.**



STEVENS POINT, WIS.

317 Main St.

Phone 790

**CONGRATULATIONS
CLASS OF 1953**

IGA
Food Stores
LOW PRICES EVERY DAY!

It is a pleasure to work with the Iris Staff, planning the details that are necessary to produce a better "IRIS". We at

NATIONAL BOOKBINDING CO.

located in Stevens Point, are proud that we can offer the most comprehensive cover and bindery service in the midwest. The large increase in the number of yearbooks we bind each year is a hearty endorsement of the fine craftsmanship, fair dealing and dependable service.

AUTOGRAPHS

AUTOGRAPHS

NATIONAL
BOOKBINDING
CO.
TRAVELER COLBY
VIC.