

Iris

1959

1959

Gris

***Wisconsin State College
Stevens Point***

Dedicated



Mr. Fred Schmeckle

with Thanks

CSC has had the privilege of having Mr. Schmeckle as a member of its faculty for the past thirty-six years. The conservation department, the first of its kind in the United States, was established by him in 1945. Through his efforts and leadership it has gained a nationwide reputation.

Besides his pioneering in conservation education, his services to the school have been many and varied. Landscaping of the college campus and providing for college transportation via bus and station wagon are among his contributions to CSC. He is a past advisor to Alpha Kappa Lambda, the conservation fraternity and a past member of the college athletic committee.

Mr. Schmeckle's services do not end with the boundaries of the campus. He is well known for his work with the Stevens Point Lions Club, and

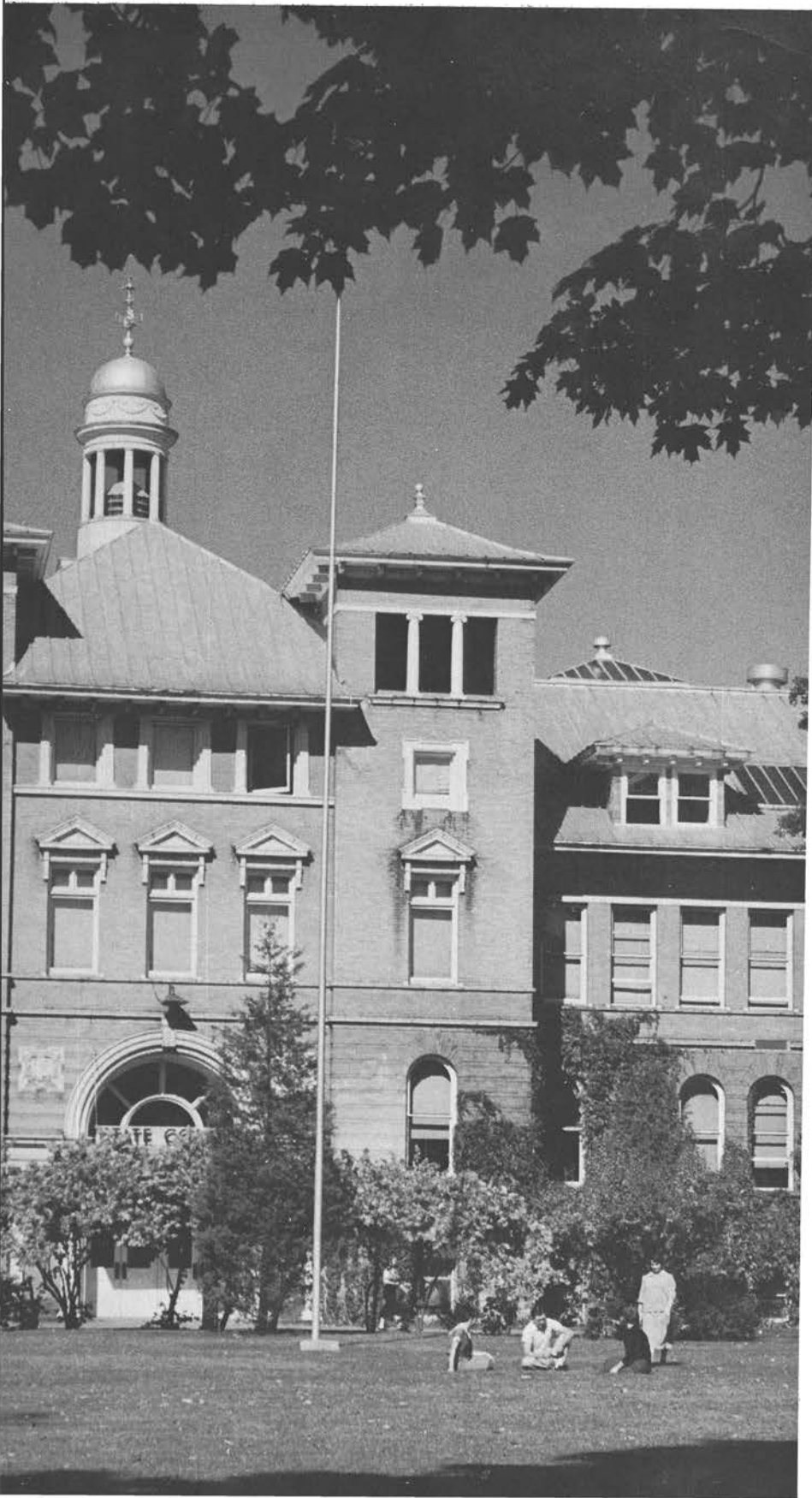
the Isaac Walton League. He is a charter member of the National Conservation Education Association and is active in several state and national committees on conservation education.

Realizing his great contributions to furthering the vital field of conservation, Mr. Schmeckle has been honored by the National Association of Conservation Departments and the state Isaac Walton League. On March second of this year, he was presented the Conservation Education Award by the North American Wildlife Society.

To you, Mr. Schmeckle, we extend our sincere thanks for your leadership, your friendship, and your many contributions to our college, our city, and the field of conservation. And may you take with you many fond memories of CSC and our best wishes for a very happy future.

Views of

C.S.C.





Athletics

Culture

Knowledge

Companionship



Starting The School



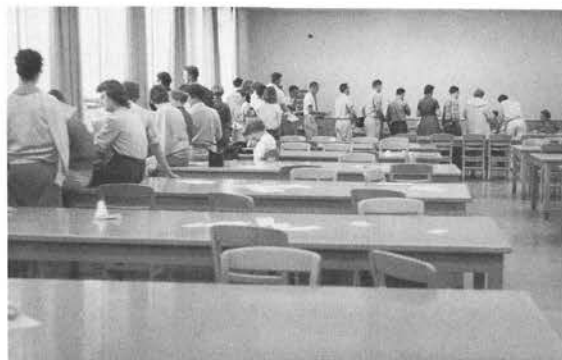
standing in line,



filling out cards,



Year



waiting in line,



paying fees...

**Ready for study and
new activities**





W
A
G
N

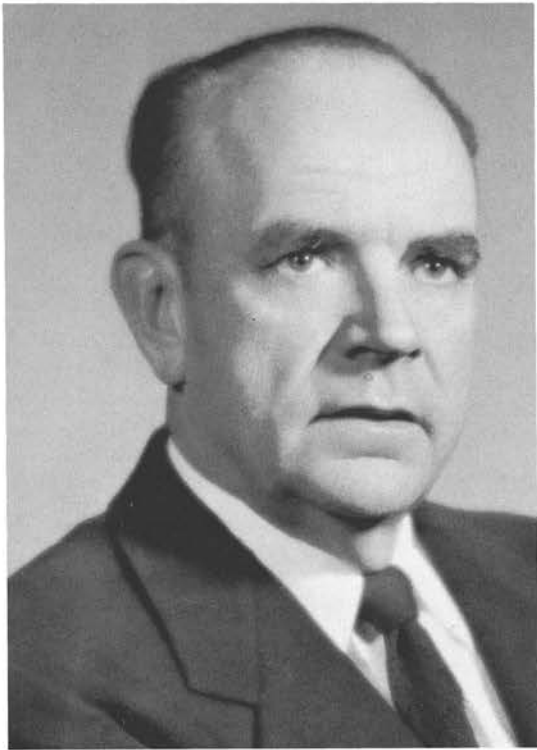
B
U
G
L
D
G
I
N
G



William C. Hanson

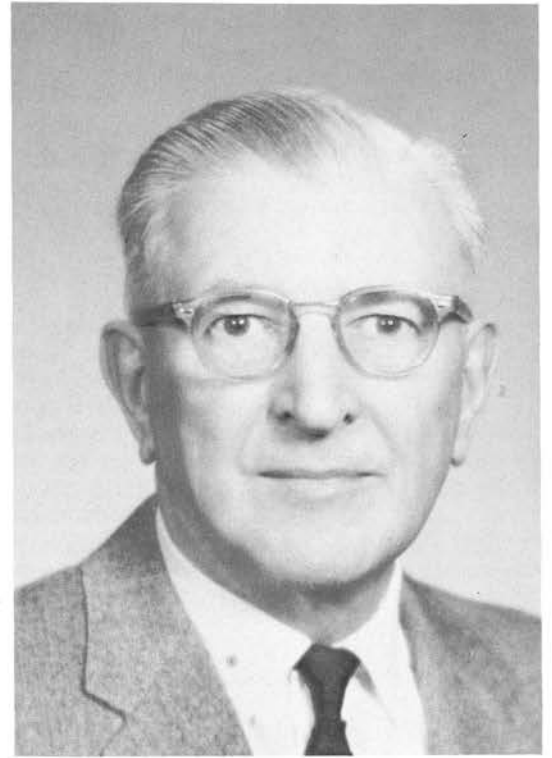
If college buildings could talk, what interesting stories they could relate about the folks who have occupied their classrooms and laboratories and walked their corridors. That would be true especially of our old main building, — now sixty-five years old. More than three generations of students and teachers have been associated in its learning enterprises, — lectures, discussions, debate, dramatics, athletics, concerts, study, — some of them boring and dull, others challenging and entertaining and stimulating. Some great teachers and some fine students have graced her classrooms; and others not so great and not so fine, but we all leave our records within these walls, — our "footprints in the sands of time." So when the old college buildings speak, wouldn't it be wonderful if what they say about our "footprints" could always be sweet music to our ears.

President Hanson



Norton E. Masterson

Member of the State Coordinating
Committee for Higher Education



Lyel N. Jenkins

Member of the Board of State
College Regents



Gordon Haferbacker

Dean of Administration
Economics



Elizabeth Pfiffner

Dean of Women
Advisor to CWA, Union Board,
Intersorority Council

Gilbert W. Faust

Registrar
Advisor to Sigma Phi Epsilon
Sigma Zeta
Chemistry



Orland E. Radke

Dean of Men
Director of Science Education
Advisor to Union Board
Interfraternity Council



Information Office

Left to right:
 C. Rolfson, J. Hoffman, E. Laszewski, S. Rindfeisch,
 G. Wojciekoski, C. Kieliszewski



Registrar's Office

J. Meshak, S. Anderson,
 J. Pajewski



Deans Office

Janet Kozak

Maintenance Staff

Left to right: C. Trzebiatowski, A. Belmore, L. Marshall, E. Tckowski,
 S. Sparhawk, M. Haase, R. Przybylski, V. Okray, P.
 Ferkes, V. Spence



Preparations for



Queen Candidates
Assembly



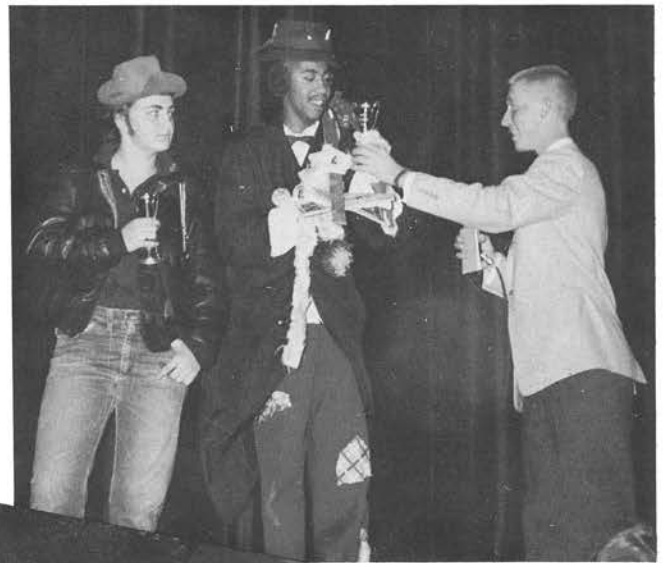
Campaigning for
Queen



"I Voted, did you?"



Homecoming '59





Hobo King — Gil Green
and Queen Sylvia



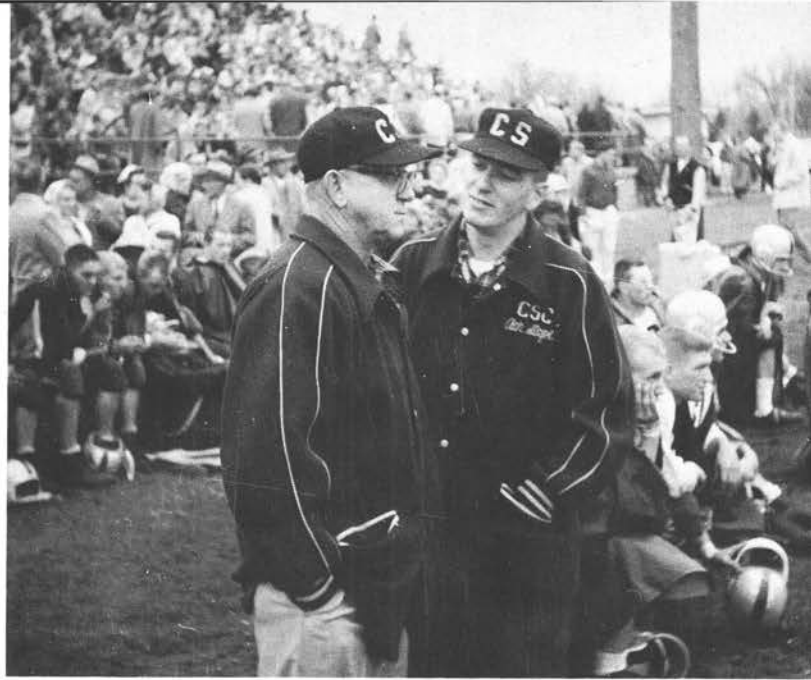
Her Majesty — Sylvia Groshek and Her court —
Karen Braem, Beth Janke, Mary Lauritzen, Pris Wagner,



Queen Sylvia and co-captains for the
game, Phil Cole, Ron Hoenisch,
Ted Ludeman, Jim Luedtke

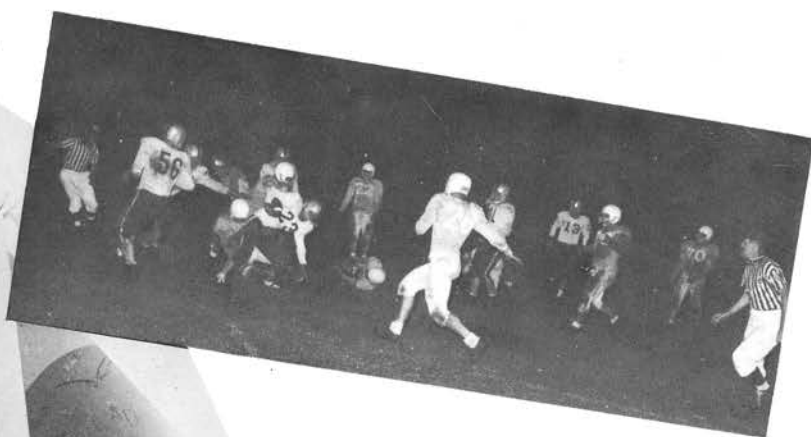
Photos of Sylvia and Karen courtesy
of Charlesworth Studio

parade ...



Queen Sylvia
reigns

game
and
dance...



... Dance to
BOB CHESEBRO
AND HIS
ORCHESTRA
(Formerly Benny Graham Band)

BOOKING ADDRESS: — 206 McCulloch - Stevens Point, Wisconsin - Phone DR 4-5722

"S" Club HOMECOMING DANCE
9 to 12 PM
P.J. High Gym!

Welcome
Steiner Hall
Home of
Central State College
Stevens Point, Wisconsin



over festivities



Warren G. Jenkins
Dean of Letters and Science

Letters and Science

A course in Letters and Science leads to the Bachelor of Arts and Bachelor of Science degrees. The aims of these courses are to provide the student with an education in social studies, sciences, languages, and humanities and to provide the student with the basic training for professional, technical and graduate studies. The courses help prepare the student to be a well informed citizen qualified for responsibilities and leadership in a democratic society.

French and German

Parlez — Vous Français? Sprechen Sie Deutsch? If not, why not take French or German? Besides grammar and conversation, literature surveys in French and German are offered.



Mildred Davis
French
Advisor to Sophomore Class



Peter A. Kroner
German
Advisor to
Edelweiss Club

Small classes are an advantage in learning a foreign language.



English and Speech



Lee A. Burrell, Jr.
Chairman of English Department
English
Advisor to Sigma Tau Delta

Are you interested in becoming an English major or minor? Plays and forensic work are part of the speech program while creative writing and studying the works of the masters of literature are included in the English program.



Bertha Glennon
English
Advisor to Sigma
Tau Delta

Emily Wilson
English



Pauline Isaacson
Chairman of Speech
Department
Speech, European History
Advisor to Senior Class,
College Theatre





Edna Nyquist
English



John F. Goodman
English

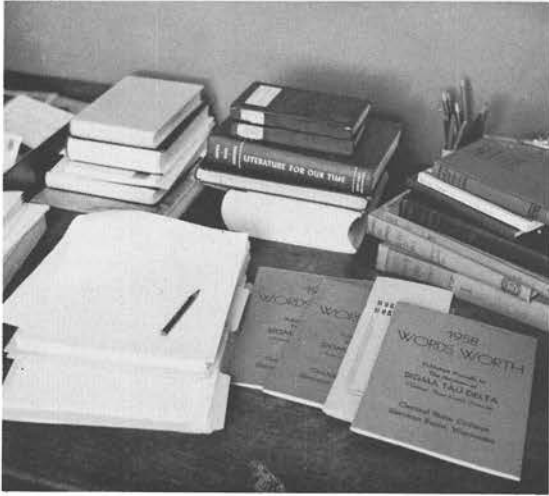
Joel C. Mickelson
English and Speech
Advisor to Pointer Staff



Michael Fortune
English and Speech

Mary Elizabeth Thompson
English and Speech
Advisor to College Theatre





Sigma Tau Delta, honorary English fraternity, sponsors annually the Wordsworth contest. Students are invited to contribute their literary works to be printed in this volume. Prizes are offered to the best short story and poem submitted.

College theater

Any student interested in play production is invited to be a member of the College Theater. Plays are staged throughout the year, some in the college auditorium and some "in the round" at the Campus School gym. **Tea House of the August Moon**, adapted by J. Patrick and George Bernard Shaw's, **Candida**, were presented this year.



A scene from **Candida**, College Theatre's second presentation of the year

Many of CSC's foreign students were featured in **Tea House of the August Moon**.



Art



All the campus is the art student's studio.



Henry Runke
Intermediate Art Supervisor
Advisor to Lutheran
Students Association



Norman Keats
Art, Junior High
Art Supervisor

Students are models too.



Edna Carlsten
Art
Primary Art Supervisor
Chairman of Art
Department

Conservation

Central State was the first college in the United States to offer a major in conservation and now has a nation wide reputation. Students may complete the studies to qualify for several kinds of positions in state conservation departments. Many conservation majors also become high school teachers.

Alpha Kappa Lambda the conservation fraternity, sponsors such activities as the venison dinner and the smelt fry for its members throughout the year.



Fred Schmeckle
Chairman of the
Conservation Department
Conservation
Science Education

Raymond K. Anderson
Conservation



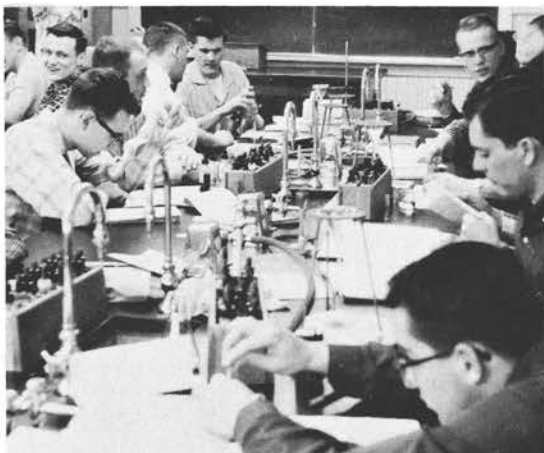
Paul Yambert
Conservation
Adviser to Alpha Kappa
Lambda



Bernard Wievel
Conservation
Advisor to Phi
Sigma Epsilon



Conservation students
may take part in summer
camp work. Stream
improvement and forestry
are two of the many
topics covered.



The soils laboratory is a busy and
interesting place for conservation
enthusiasts.



Clyde W. Hibbs
Conservation
Resident Director
of Delzell Hall



"Don't they look nice!" exclaim prospective customers at the Home Ec Club's Christmas sale.



Agnes A. Jones
Chairman of Home
Economics Department
Home Economics Education
Advisor to Home Ec Club

Home Economics

Many of CSC's women choose the field of home economics for their major. It is not just practical, but stimulating and challenging as well. Art, psychology and the sciences are a part of the curriculum as well as the usual foods, clothing, home management, family relations and child development. Graduates are prepared for teaching positions, county home agents and demonstrators.

Home Ec Club members enjoy the advantages of meeting at the Home Management House.





Freshmen students learn the newest techniques.

Doris V. Davis

Foods and Nutrition
Advisor to Home Ec Club
Advisor to Freshmen Class



The Home Ec Club is a service organization for home economics students. Guest speakers bring topics and demonstrations to help students keep up to date. The club sponsors candy sales for raising money to sponsor outstanding students for conventions of the various state and national organizations.

Demonstrations are a part of advanced food classes.





Elvira L. Thomson
Home Management
Child Development
Family Relations and Finance
Resident Director of Home
Management House
Advisor to Home Ec. Club

Design, an art course required of all home economics students, gives valuable training in the principals of art.



Mrs. Pfiffner pours at the Home Management's Christmas Tea.

Home economics students select a color scheme for interior decorating class.





Knit one, purl two!

Ethel V. Hill

Clothing Selection

Dress Design

Tailoring

Textiles

Advisor to Home Ec Club

Advisor to Omega Mu Chi



Tailoring is a painstaking but satisfying type of clothing construction.



It's a man's
world . . .



Joke, coke and a smoke

Waiting for inspiration



. . . In the

Hurried cramming for an exam



basement smoker

Mathematics

Mathematicians are more in demand than ever before. The math major is offered positions in teaching, research and business. An extensive mathematical education can be completed at Central State.



Kenneth W. Boylan
Chairman of Mathematics
Department



William H. Clements
English and Mathematics
Director of Testing
Advisor to Wayland Club



Edith Treuenfels
Mathematics

Orville M. Rice
Mathematics

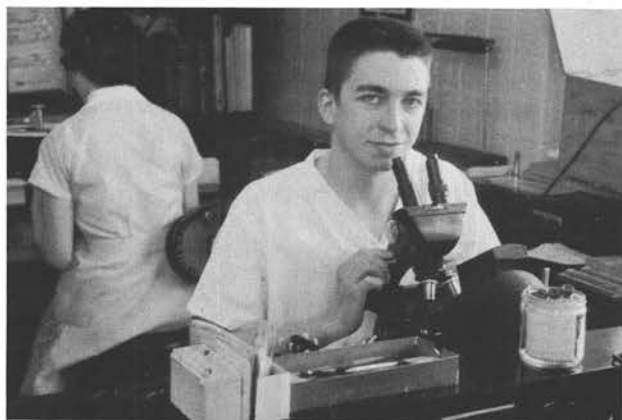


Students work problems at the blackboard

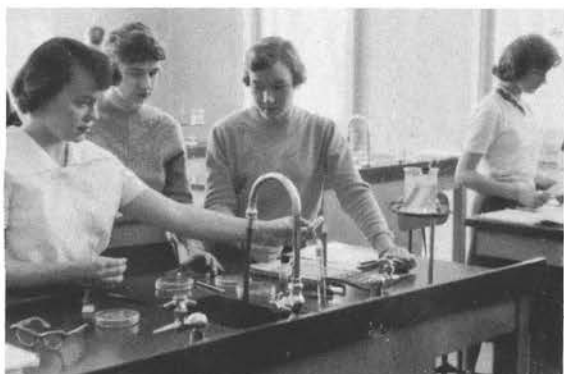


Medical Technology

CSC offers a Bachelor of Science degree with a major in Medical Technology. Following completion of the course the student attends an approved school of medical technology.

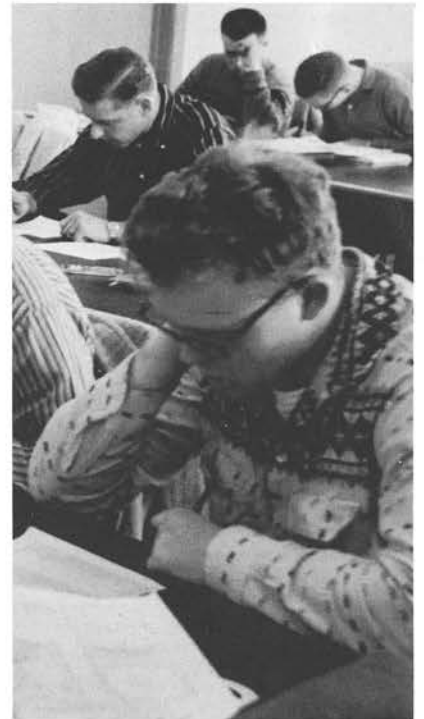


Saint Michael's Hospital offers opportunities for medical technology students to apply their knowledge.



Geography

Let your textbook carry you around the world. After completing basic courses in physical and human geography, a student may select courses with a unifying objective for his geography major.



Another map test?



Raymond Specht
Geography
Resident Director of Steiner
Hall
Photography advisor to the
Pointer



Robert Anderson
Chairman of Geography
Department
Advisor to "S" Club



T. K. Chang
Geography
Photography advisor to Iris

Chemistry



Roland Trytten
Chairman of Chemistry
Department
Advisor to Sigma Zeta,
Freshman Class, Lutheran
Students Association

Chemistry, a vital field in the modern world, is one of the science majors offered at CSC. Students learn to use the different equipment and chemicals to obtain desired, and some not so desired results. There are lab periods correlated with lecture sessions. Experiments are conducted in groups or individually. The labs are open in the evening for students who wish to do extra work.



Gilbert Faust
Registrar, Catalog Editor
Chemistry
Advisor to Sigma Zeta
Sigma Phi Epsilon Chapter
Counsellor

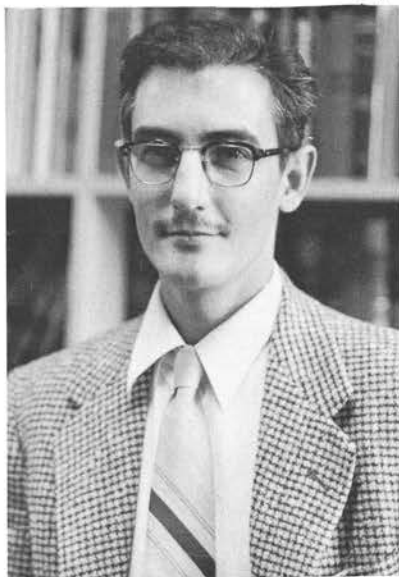
Curious minds are satisfied in the chemistry laboratory.





Rodney Sung
Chemistry
Advisor to Tau Kappa Epsilon

Norman J. Birkholz
Chemistry



Future scientists experiment

Eleanor O'Connor
Chemistry



Biology



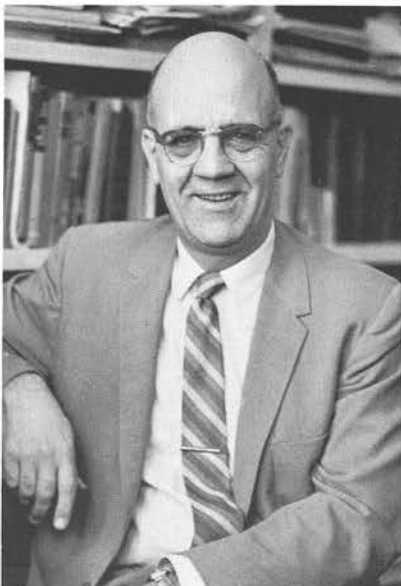
Robert E. Simpson
Biology

The Biology Department has expanded its facilities and staff to accommodate the large number of prospective majors. The studies of a biology major include lecture and much laboratory work. Human anatomy, physiology, and health are studied as well as plant and lower animal biology.



Robert F. Wilde
Physiology

Arol C. Epple
Biology, Health
Advisor to Wesley

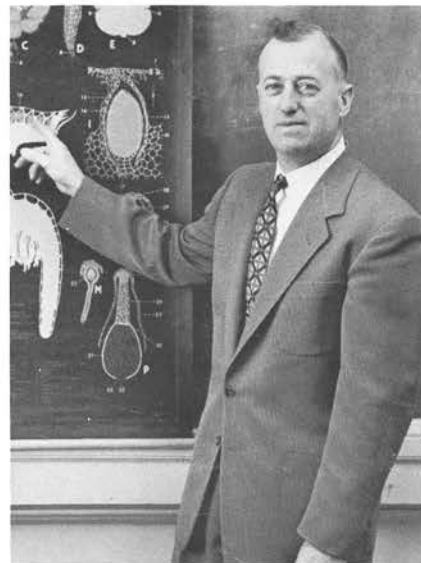


Those poor specimens!





Biology students at work in the lab.



Edgar F. Pierson
 Chairman of the Biology
 Department
 Biology, Zoology
 Advisor to Junior Class



R. S. Whitmire
 Anatomy, Botany

John W. Barnes
 Zoology, General Ecology,
 Entomology



George Becher
 Botany, Biology

Physics



Allen F. Blocker
Physics, Mathematics

Raymond M. Rightsell
Chairman of Physics Department
Physics, Astronomy



A physics experiment requires accurate procedure and calculations.





Mr. Rightsell watches a student demonstration in physics class.



Monica Bainter
Physics
Advisor to Junior Class



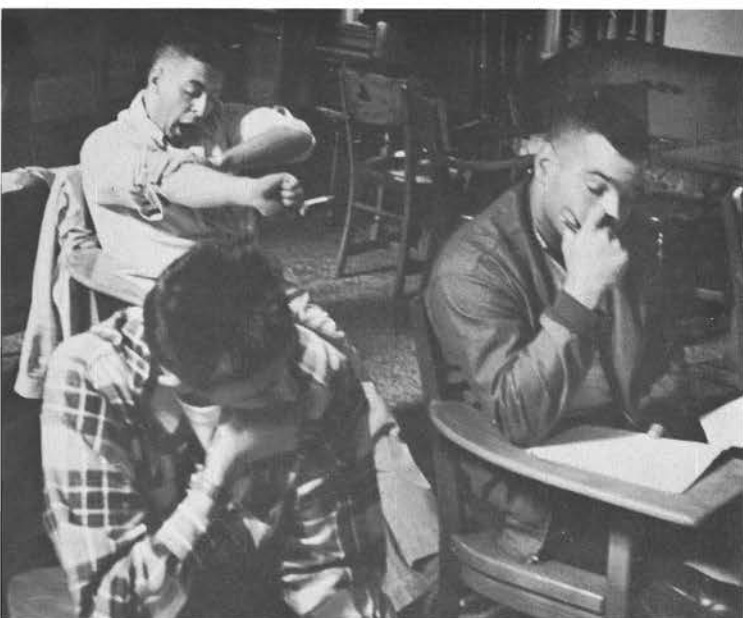
James E. Jensen
Economics

Economics

A new major at Central State is the Economics major. Accounting, insurance, and statistics are a few of the courses of which this major is composed.



Lothar I. Iversen
Economics



The Thinking Men

Philosophy



Albert Harris
Education, Psychology

Psychology



Joseph L. Schuler Jr.
Philosophy

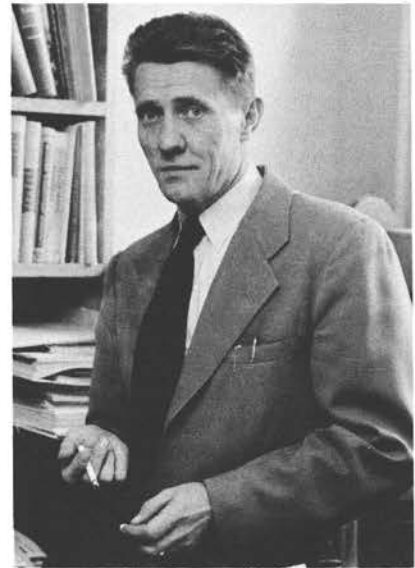
Viola Bloom
Psychology



Sociology



Gladys Ishida
Political Science, Sociology



George I. J. Dixon
Sociology
Advisor to Alpha Beta Rho

Dr. Dixon conducts a sociology seminar



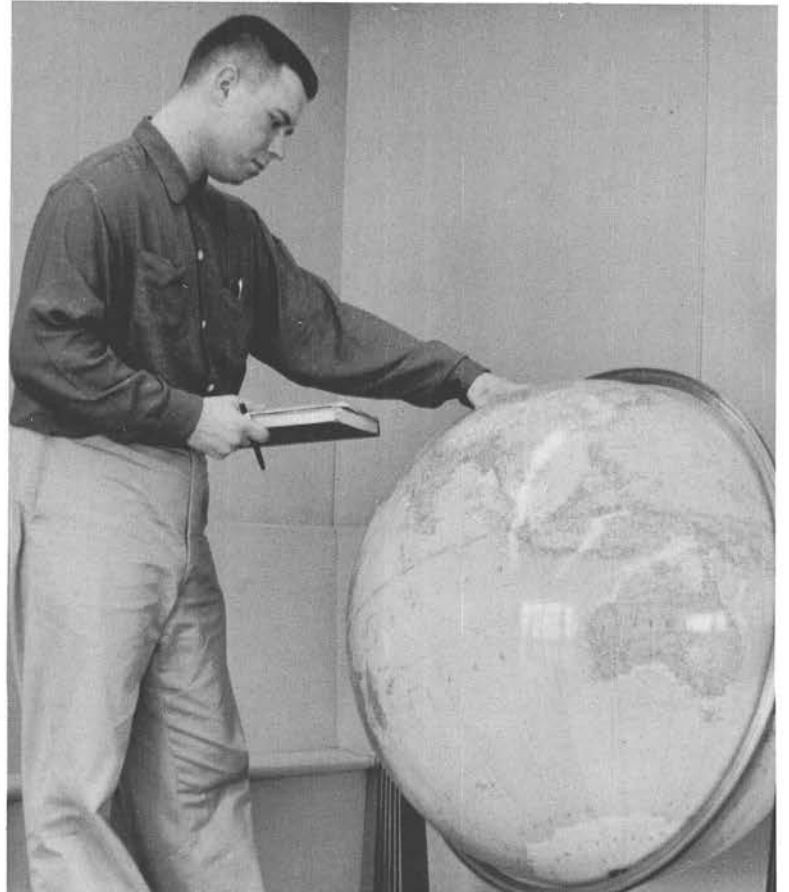


Frank W. Crow
Chairman of the Social
Science Department
History
Advisor to Student Council

History

The History department has a wide variety of subjects from which to choose. The large number of history majors may choose such topics as European history, medieval history, the Renaissance, and Russian history. History majors usually select correlated subjects such as political science, and geography. All CSC graduates are required to earn six credits in American history.

Locating historical places



Alpha Gamma

This year has seen the revival of Alpha Gamma, Social Science Fraternity. The group has presented several programs with a highly informative and cultural significance. Among these were programs which featured congressman Melvin Laird and Isaac D Unno, Consulate General of Israel.



Alpha Gamma members question Isaac D. Unno.



Clifford Morrison
History
Advisor to Siasefi

Guy J. Gibson
History
Advisor to Alpha Gamma





**YDems and
YGOP . . .**

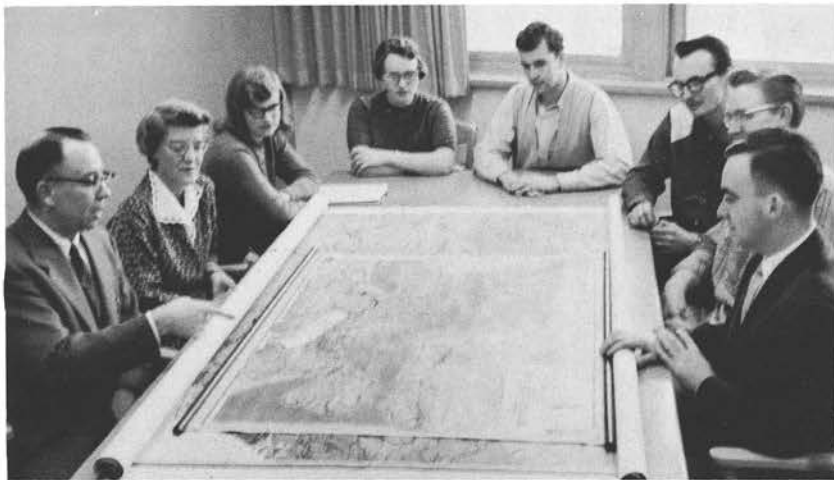
. . . get together for friendly relaxation.



Frederich Kremple
History
Advisor to Phi Sigma Epsilon,
Iris, Alpha Gamma



Elwin W. Sigmund
History, Debate Coach,
Advisor to Y-Dems



Mr. Fothergill makes a point with the help of maps.

Political Science



Garland W. Fothergill
Political Science,
Advisor to YDems



Warren G. Jenkins
Dean of Letters and Science
History, Colloquium

Music



Hugo D. Marple
Chairman of the Music
Department



Dean G. Blair
Piano, Theory



Wendell E. Orr
Choir, Women's Glee Club

Paul J. Wallace
Band, Theory



The Universal

Language

The music department of CSC is a very active organization. Although the music major is quite new, the department boasts a large membership. Some of its many activities include concerts, operettas, recitals, and concert tours. All of the organizations of the department — mixed chorus, men's and women's glee clubs, band, and orchestra are open to students outside the department as well as music majors and minors. Alpha Kappa Rho is the music honor society.

Donald Rupert
Piano, Music Literature



Norman E. Knutzen
Men's Glee Club, English,
Advisor to Sigma Phi
Epsilon





Top Row — J. Helke; J. Payzer; J. Johnson; W. Groth; R. Stroede; R. Chagon. **2nd Row** — C. Eddy; M. Kliet; M. Hartman; M. Gronski; B. Breitenstein; J. Oldenberg; D. McKay; F. Bidgood; J. Mitchell; F. Grasley; W. Clark; R. Gerstenkorn; F. Marzolf; J. Heding; S. Scheeler; S. Smith; C. Bailey; R. Allen; R. Mayer; R. Suchoski; R. Schwartz; A. Held; T. Sopa. **3rd Row** — W. Jaeckel; R. Chesebro; F. Passineau; M. Trantow; A. Beck; F. Pacholski; W. Biggs; H. Nowicki; J. Frenzel; D. Gardner; J. Marks; S. Kitrush; R. Sindberg; R. Jokela; J. Ungrodt; T. Stevens; L. Kuse; P. Beavers. **4th Row** — S. Eastwood; R. Barbian; M. Roth; J. Clark; B. Wilmot; S. Worthington; J. Engle.

Band

Men's Glee Club





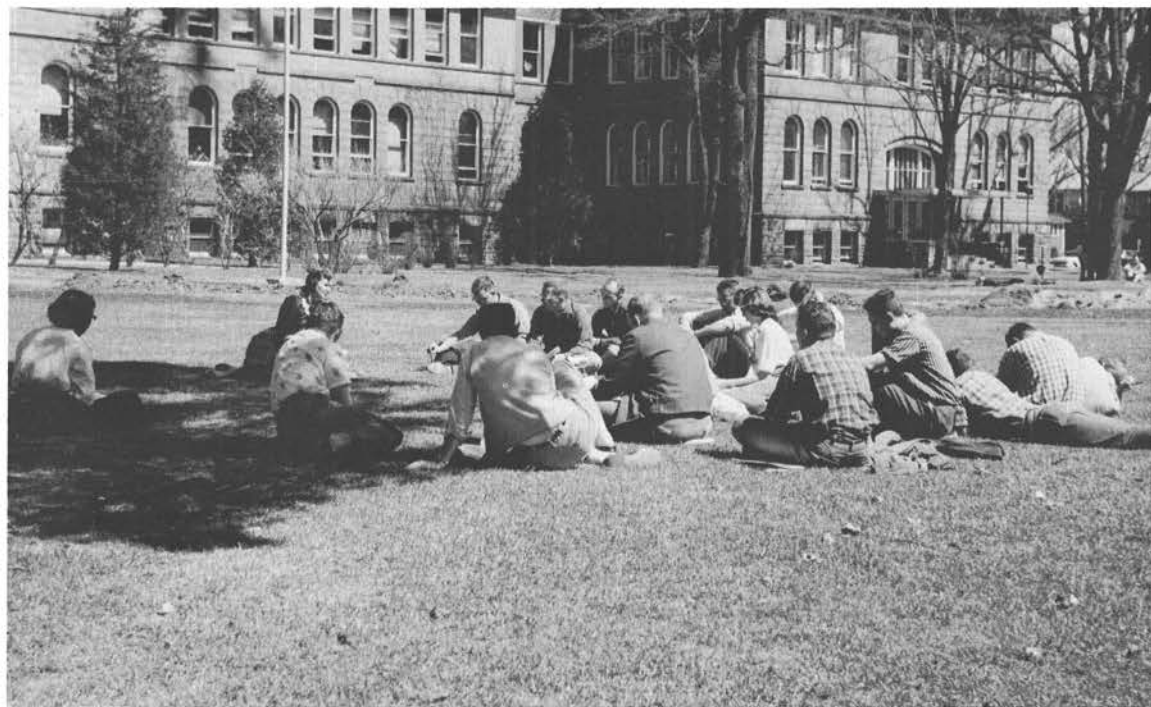
Women's Glee Club

Music students have the opportunity to participate in several operettas. These are staged by the department for the public.



Studying Moves Outdoors

Not all college classes are conducted in classrooms. Many of the departments move outdoors for duty. Conservation classes make good use of the campus and surrounding areas to acquire information and experience first hand. You are very likely to see art students with their drawing boards in hand looking for a choice subject. Even such classes as English and psychology take to the outdoors when the weather permits.



A psychology class finds the warm spring air conducive to thought and discussion.





Activites



550 Trading Post

The 550's is an organization for veterans on campus. Their bulletin board serves as a trading post for the school. Anyone that has an item to sell, or would like to buy something at a bargain, or would like a ride to a particular place some weekend, or has a room for rent, may post this information on the 550's bulletin board. The board also carries numerous jokes and news of coming social events of the organization.

550's

The student council is the student governing body of CSC. It is composed of a representative and the vice president of each class. Several activities and projects are carried out each year. One of these projects this year, was a campaign for a large turn out in Homecoming Queen voting. Class elections and the student mailboxes are two other activities under the jurisdiction of the student council.



Student Council in session



The Student Council conducts an "all out" campaign to increase the number of student votes for Homecoming Queen.

Student Council

The Pointer

Once every two weeks CSC students look forward to the latest edition of the **Pointer**. Our college newspaper, the **Pointer**, prints club news, sport events and other activities.

Editor — Cliff Haas

News Editor — Karen Francis

Composition Editor — June Zielinski

Sports Editor — Jiggs Meuret

Photographers — Ron N. Nelson, Pete Lawler, Bob Sindberg, Carl Moede

Business Manager — Gertrude Ann West

Circulation Manager — Roselyn Barbian



Cliff Haas, editor, works on the latest edition of the **Pointer**.

One mistake that won't be in the **Pointer**.





Sports Editor, Jiggs Meuret, approves the latest sports news.



The typists busy at work.

June composes some copy.



Bob develops pictures for the paper.

The Iris in Progress

The college yearbook, the *Iris*, provides a record of memories for years to come. School activities, organizations, faculty members and graduating seniors are recorded in the yearbook. Each Monday night the *Iris* Staff meets in its cubby hole on third floor to prepare the *Iris* for the press.

Editor — Gretchen Speerstra
Co-Editor — Joan Pautz
Copy Editor — Gloria Radloff
Copy Staff — Pat Van Wormer, Rita Ristow, Sue Rezin
Layout Staff — Sandra Smith, Marilyn Roth, Judy Ryan, Ardis Werner
Sports Editor — Dave Bayer
Business Manager — Catherine Nulty
Typists — Gertude Ann West, Donna Henke
Photographer — Dale Simonson



Editor, Gretchen Speerstra and Co-Editor, Joan Pautz prepare another page for the press.

Kathy Nulty organizes ads for the *Iris*.

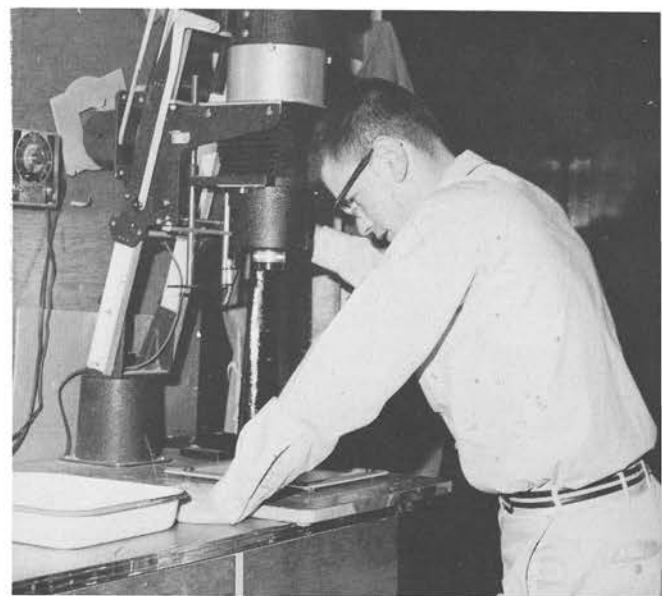


The copy staff prepares some captions.





Sports Editor, Dave Bayer, records the scores.



Iris photographer, Dale Simonson, enlarges a photograph.



Members of the layout staff do some hunting and then set up the page.



Assembly Series

Fine Arts Week



Lectures explaining and discussing the displays of oils, pottery, and abstract design were well received.

This year, one week was set aside by the Assembly Series Committee as Fine Arts Week. Art in speech, painting, crafts, music, and dramatics were featured at different times through the week. The famous Canadian Players delighted audiences with their performances of George Bernard Shaw's **Devil's Disciple**, and Shakespeare's **As You Like It**. Special displays of paintings and pottery were shown in the library theater and lobby. The music department contributed several musical programs for the occasion.

A "full house" was highly entertained by the Canadian Players' presentation of **Devil's Disciple**.



Rogers and Hammerstein's "The King and I" delighted a large audience.



Throughout the year the Assembly Series Committee sponsors programs for the faculty, student body, and townspeople. Each student helps defray the cost of the programs through the student activity fund. This entitles students to attend these programs on their student activity card. The programs are planned so as to present varied and interesting presentations. Lectures on national issues and other pertinent topics, musical groups, dance presentations, and dramatics are only a part of the varied selection of programs sponsored by the Assembly Series.



Student folk dancers from Duquesne University presented an enjoyable performance of folk songs and dances from various countries.





Top Row — M. Wernberg; R. Opichka; G. Richards; E. Richards; E. Searl; F. Townsend; A. Altman; B. Jenkins; V. Krinke; J. Ungrodt; R. Estacio; J. Fritsch; F. Marzolf.
2nd Row — A. Grimm; D. Blom; J. Zielinski; H. Nowicki; L. Sorenson; C. Heinrich; M. Pautz; S. Gjermundson; M. Epple.
3rd Row — P. Lundberg; E. Eis; J. Pautz; B. Marvin; R. Barbian; A. Held; B. Williams; R. Lee.

Alpha Sigma Alpha

The fall tea, with a Spanish atmosphere, was the Alpha Sigs first activity of the year. When pledging began, chicken rings became the "fashionable" jewelry of the future actives.

During second semester, Alpha Sigma Alpha, our only national sorority, participated in Songfest, spring pledging and other activities.

Officers

President — Joan Pautz
 Vice President — Carol Heinrich
 Secretary — Judy Ungrodt
 Treasurer — June Zielinski



Rushees were entertained at a Reno Casino.



Alpha Sig's
Sadie Hawkins Dance.





Left to Right, Top Row — J. Nehring; P. Perkofski; B. Otto; L. Rasmussen; S. Rezin; M. Buggs; G. Sommers; M. Lu-Maye; J. Marvin.
2nd Row — G. Radloff; M. Jensen; L. Tellock; S. Rulseh; J. Guetschow; B. Colligan; M. Krasny; D. Darling; M. Crueger.
3rd Row — C. Jensen; P. Maahs; B. Bowen; B. Charnecke; E. Millard; C. Erickson; M. Lemancik; D. Etten; B. Marko; C. Lewis; S. Yach.

Omega Mu Chi

The fall tea honoring the new women students was the first event sponsored by the Omegas. This led to other activities such as pledging and Homecoming. The annual Omega Christmas Bazaar closed the first semester successfully.

Safety pin necklaces were the fad during spring pledging. Songfest, candy sales and the Alum picnic occupied the remaining time of the semester.

Officers

- President — Sue Rezin
- Vice President — Gloria Richards
- Secretary — Sue Rulseh
- Treasurer — Rebecca Colligan



Halloween Masquerade Rushing Party.



Preparing food for the fall tea.





Left to Right, Top Row — E. Runge; M. Nylund; R. Handt; C. Seif; V. Fisher; J. Cepek; D. Welch; S. Link; G. Speerstra; M. Mathey; K. Feuerstein; J. Selk; B. Braun.
2nd Row — S. Mills; C. Prah; P. Ainsworth; P. Johnson; L. Ablard; M. Schieb; K. Braem; D. Baehler; P. Pronz; M. Eskritt.
3rd Row — A. Wagner; M. Davis; H. Gustafson; C. Emerich; J. Campbell.
4th Row — B. Bannach; C. Loveless; G. Bratley; B. Stolson; J. Morzinski; R. Ristow; B. Janke.

Tau Gamma Beta

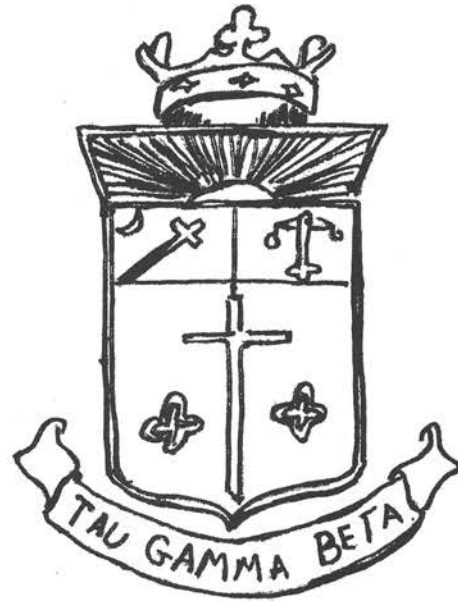
Fiftieth Anniversary Year

The social season of the Tau Gam's was opened with their tea. "Muds" were kept busy during pledging by sewing buttons on their pink and blue ribbons. Homecoming highlighted their activities of the first semester.

This year the Tau Gam's celebrated their 50th anniversary. An anniversary banquet was held at the Hotel Whiting with alums attending from all over the state. The parents of the actives helped celebrate the year by attending the Parents' Tea. They closed the social season with their annual "Cotton Swirl" which provided fun and entertainment for all.



Tau Gam's entertain at their fall tea.



Officers

- President — Shirley Link
- Vice President — Darlene Welch
- Secretary — Judy Cepek
- Treasurer — Rita Ristow

Tau Gams on the Homecoming Queen's court —

	Beth Janke	
Karen Braem	Sig Ep's candidate	Pris Wagner
"S" Club candidate		TKE's candidate





Top Row — B. Karrier; Mrs. Peter Kroner; J. Ryan; J. Johnson; R. Holman; J. Gauerke; Miss H. Kuse.
2nd Row — A. Gosh; D. Witcraft; R. Wanta; L. Kuse; J. Thorson.
3rd Row — G. West; J. Swader; A. Werner; A. Spearbreaker; J. Gauerke.
4th Row — B. Adamsheck; C. Holtz; J. Andree; L. Johnson.

Psi Delta Psi

This sorority was organized this year and we're looking forward to its activities as a new sisterhood on campus.

Officers

President — Gertrude West
 Vice President — Mary Ann Kucharzak
 Secretary — Rita Wanta
 Treasurer — Jeanette Gauerke



Left to Right, Top Row — N. Dorn; R. Marko; F. McCormick; O. Schwerdtfeger; D. Schmidtke; J. Freiman; C. Ballenger; D. Johnson; A. Trachte; A. Olson; B. Wagner; J. Gronski.
2nd Row — L. Henderson; W. Biggs; H. Trzeciak; R. Chesebro; E. Strei; C. Wittenburg; D. Wikum; C. Christensen.
3rd Row — R. Pepper; J. Scheuppert; W. Iwanski; P. Oxnem; E. Hunold; G. Dorn; W. Galler; E. Karau; G. Meuret.

Phi Sigma Epsilon

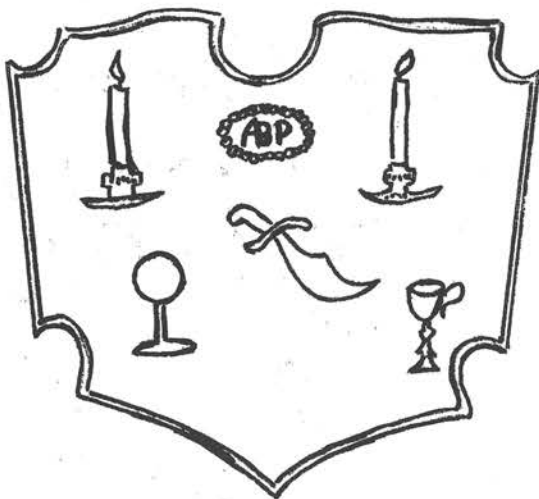


The Phi Sigs started the school year by taking an active part in the Homecoming festivities. They sponsored the Queen's Dance which introduced the Homecoming Queen candidates.

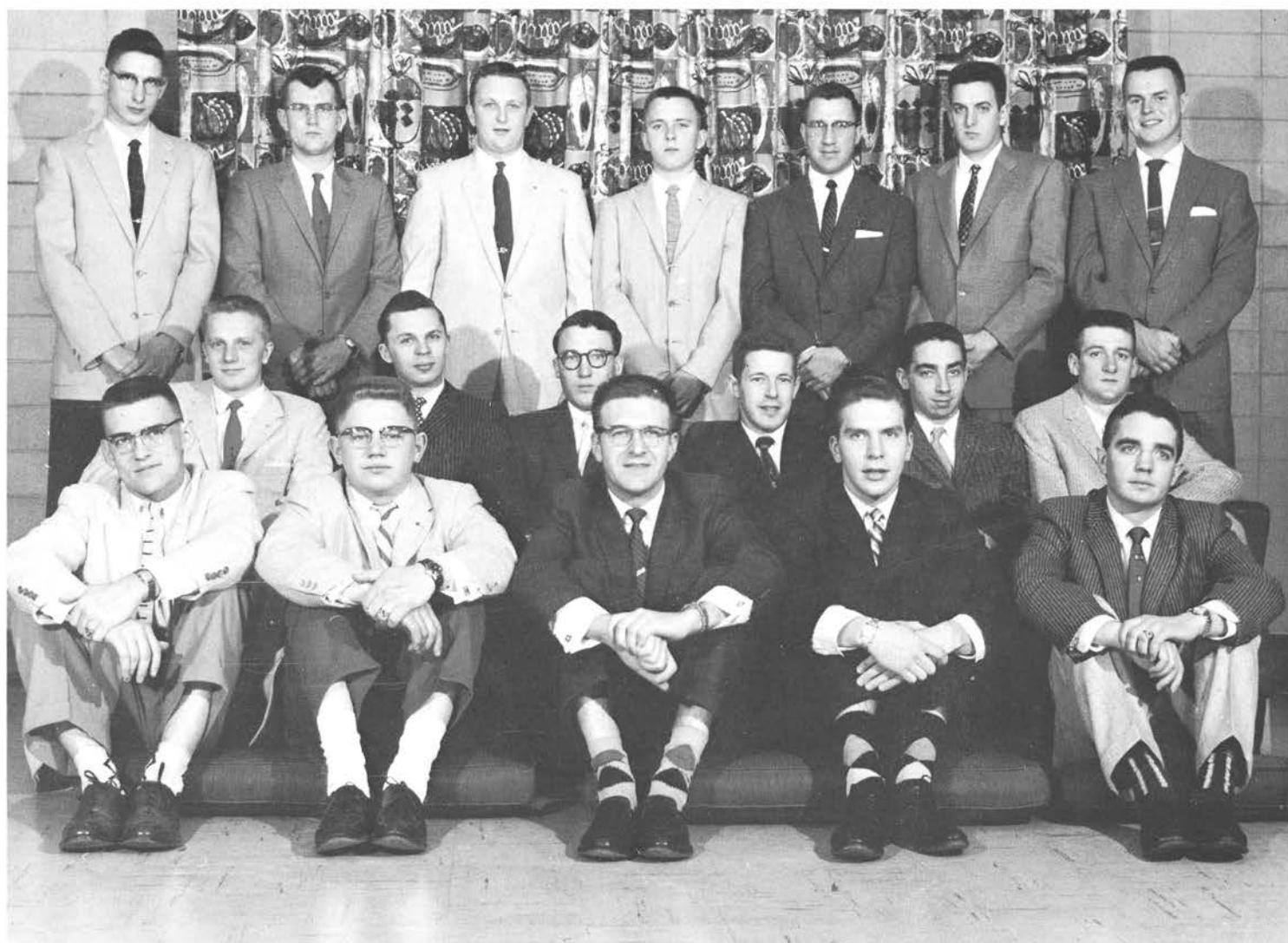
Second semester activities included pledging and the Phi Sig Style Show. This ended a successful year for the Phi Sigs.



Her Majesty — Sylvia Groshek
Alpha Beta Rho's winning candidate



Sylvia is presented to the students at
the candidates assembly.

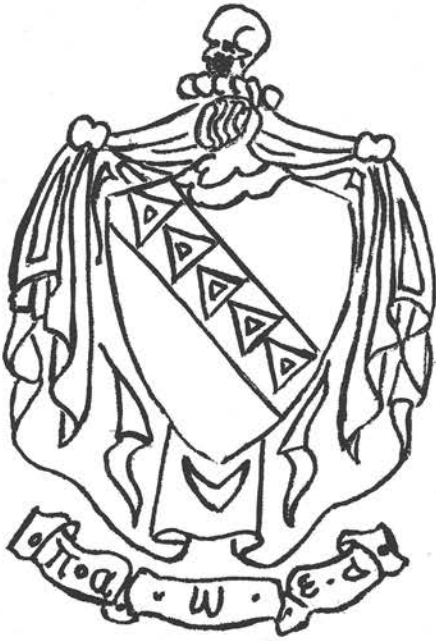


Left to Right, Top Row — R. Bernoski; J. Kosmicki; R. Novak; J. Freeland; D. Misner; M. Smith; J. Krems.
2nd Row — B. Lind; R. Krizenesky; D. Peterson; J. Smith; J. Engel; R. Smith.
3rd Row — J. Young; L. Miller; E. Myers; P. Rasmussen; D. Linskens.

Alpha Beta Rho's successful year was opened by having their candidate, Sylvia Groshek, being chosen Homecoming Queen. Some of the credit is justly being claimed by this group for the Alpha Sigs winning first place in serious float competition — it was a cooperative effort.

Other activities such as a promising softball team, senior banquet, and the smelt fry are among events of the year. Alpha Beta Rho had the top grade point average of the four fraternities for first semester. With the feeling that they are doing well as an independent, they turned down the opportunity for national affiliation.

Alpha Beta Rho



Fun was had by all.

Bob providing entertainment.





Left to Right, Top Row — G. Berg; R. Dickinson; R. Johanknecht; B. Blum; R. Nolde; R. Draeger; J. Farrell; R. Timm.
 2nd Row — J. Smart; T. Staniszewski; M. Boerst; R. LaBrot; D. Larson; H. Froze; J. Soulati.
 3rd Row — W. Jackson; K. Muehl; D. Paasch; W. Wagner; L. Clement; W. Truskowski; G. Madden.

Tau Kappa Epsilon

The TKE's year began with a very enthusiastic campaign for Homecoming Queen. They participated in many athletic events such as the inter-fraternity softball league, inter-mural volleyball, municipal basketball and the Wisconsin Province basketball tournament.

Not to be outdone socially, the TKE's joined the Alpha Sigs in a toboggan party, and invited the Tau Gams to a picnic and a bowling party. They were the only frat to take part in Songfest.

Officers

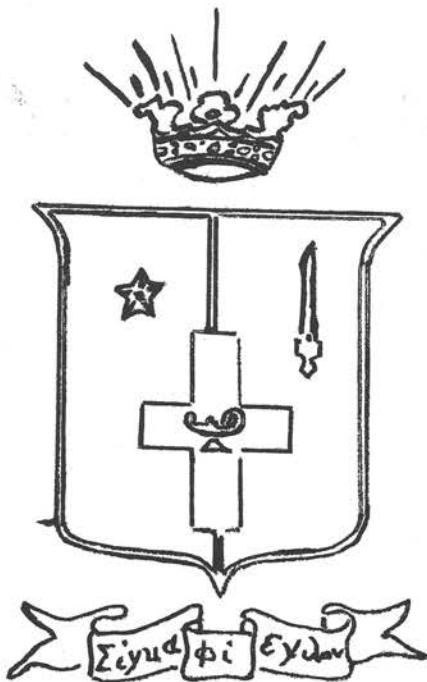
President — Bob La Brot
 Vice President — Bill Truskowski
 Secretary — Dick Timm
 Treasurer — Bruce Bloom



Don prepares the soup.



Sig Ep's and their dates enjoy the atmosphere of Waupaca — indoors.





Left to Right, Top Row — K. Sanger; T. Jensen; B. Erickson; G. Goddard; B. Check; J. Miller; R. Hebbe.
2nd Row — K. Wanserski; J. Schaefer; R. Misirowski; D. Danielson; J. Woodward; M. Bannach.

Sigma Phi Epsilon

Every Tuesday you'll see some gentlemen wearing white shirts and red ties. These are the men of Sigma Phi Epsilon. The Christmas spirit of CSC is always enhanced by the Christmas trees which adorn the halls of the main building — a service of the Sig Eps. Homecoming time finds them vigorously campaigning for the girl of their dreams for Queen. Pledging activities take up a large part of the time of Sig Ep members.

Officers

President — Gary Goddard
 Vice President — James Schaefer
 Secretary — Michael Bannach
 Treasurer — Burton Erickson



Mrs. Pfiffner advises the sororities on an important subject — B. Jenkins; B. Braun; L. Rasmussen; G. Radloff; S. Rezin; A. Grimm; S. Link; D. Welch.

The four sororities are represented in this council by the president, vice-president and a delegate from each sorority. The council sponsors the Inter-Sorority formal and advises on sorority rules and laws.

Sue Rezin was president first semester followed by Barbara Jenkins second semester.

Inter-Sorority Council



Inter-Sorority Council explains the functions of a sorority to women students.

Inter-Fraternity Council

The IFC members talk over a matter of common interest.



This council governs the four fraternities on campus. It is composed of representatives from each fraternity.

Decisions and rules for the Greek men are stipulated by this organization. Bob La Brot served as president for the second semester.



President, Nancy Schaftner, presents a first place award.



College Women's Association

CWA Songfest Winners

Greek Division

1st place — Tau Gamma Beta

2nd place — Omega Mu Chi

Non-Greek Division

1st place — Nelson Hall

2nd place — Lutheran Students' Association



Siasefis "Tea" party.



Pledge's Mascot.

Barbershop Quartet.





Left to Right, Top Row — G. Curtis; J. Marko; T. Polivka; J. Krull; T. Gurtler; E. Larson; J. Luedtke; J. Larson.
2nd Row — R. Marko; D. Baltus; D. Korth; T. Ludeman; W. Hummel; M. Karg; D. Cooper; L. Gunderson.
3rd Row — D. Grauden; J. Kudla; L. Bidgood; J. Effa.

Siasefis

This organization of 30 men strive to promote school spirit on our campus. As usual they participated in the humorous float division of the Homecoming parade.

Second semester was started with pledging and was concluded with their annual Spring Formal which included a softball game, food and refreshments.





*The frosty air brings snow making
CSC a Winter Wonderland.*





C S
A C
M H
P O
U O
S L



Raymond Gotham
Director of Teacher
Education and Placement
Director of Field Service

Burdette Eagon
Education, Psychology
Director of Elementary
Education





Carl Yoder
Music Supervisor



Jane M. Fuller
Physical Education
Supervisor

Bernice Czaplinski, Marie
Swallow
Secretaries



Dorothy Kampenga
Campus School Librarian



Kindergarten-Primary



Mary Elizabeth Smith
Associate Director for
Kindergarten-Primary
Curriculum
English
Advisor to Primary Council

The curriculum of the kindergarten-primary department prepares students for teaching kindergarten and grades one through three. Students take special education courses in addition to the regular academic subjects. Thirteen credits of practice teaching in three different grades are required of all primary majors.

Phillys Ravey
Kindergarten Supervisor
Omega Mu Chi Advisor





Hildegard Kuse
Second Grade Supervisor
Psi Delta Psi Advisor



Mary Samter
First Grade Supervisor
Omega Mu Chi Advisor



A primary student teacher
teaches reading.



Mildrede Williams
Third Grade Supervisor



Story Time

Lining Up for recess.



Primary Council

Primary Council is the professional organization for primary majors. Some of its many activities include helping the Indians at the Lac du Flambeau Reservation have a Merry Christmas and conducting a nursery school for four year olds. The year's activities are concluded with the annual spring luncheon.



Primary Council members help the children do creative work.

Reading a story to the pre-schoolers.



Intermediate-Upper Elementary

The Intermediate-Upper Elementary curriculum prepares students for teaching grades four through eight in elementary schools. It provides the foundation work necessary for later graduate study in the field of Elementary Supervision, and Administration. The required ten credits of student teaching give prospective teachers training that is not only practical, but stimulating and enjoyable as well.



Robert Lewis
Associate Director for
Intermediate-Upper
Elementary Curriculum
Geography, Education
Advisor to Round Table

Cecilia Welch
Fifth Grade Supervisor



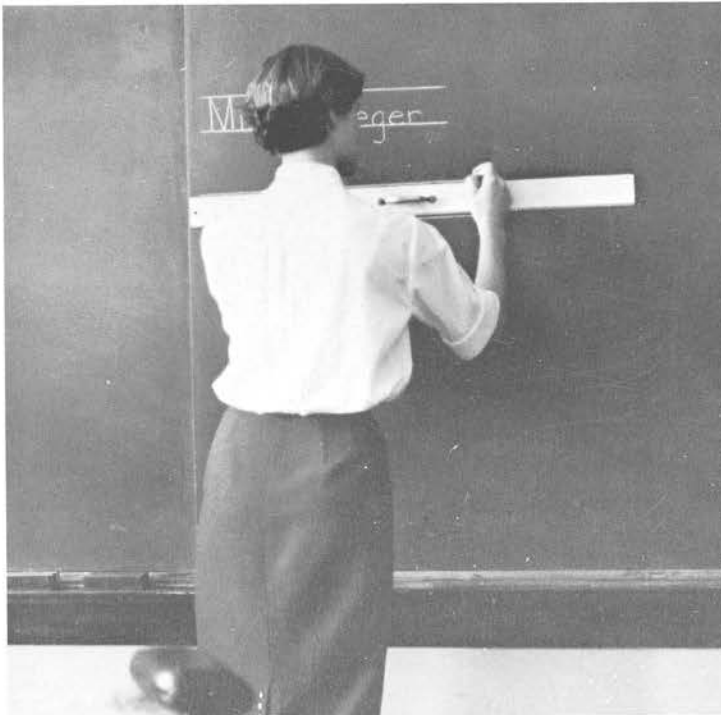


Marjorie Kerst
Education, Psychology,
English
Advisor to Tau Gamma Beta,
Primary Council



Vivian Kellogg
Fourth Grade Supervisor
Advisor to Alpha Sigma
Alpha

Preparing for class.



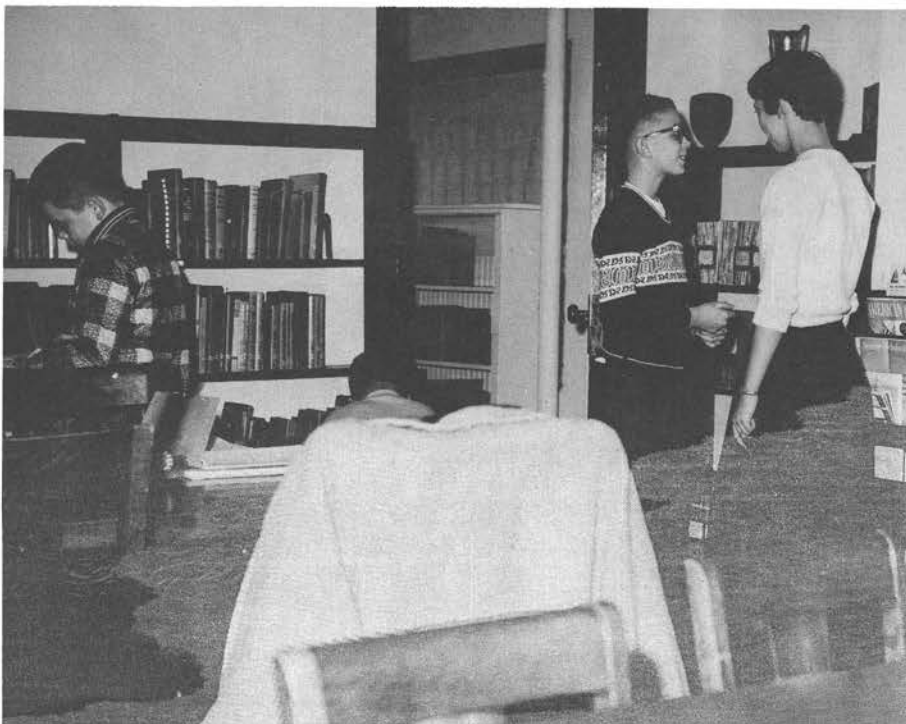


Franklin Pearson
Sixth Grade Supervisor
Advisor to Wesley



A student teacher jokes with his pupils.

A student agrees that books are fun.



Round Table



Round Table members promote the use of visual aids.

Round Table is the professional organization for students in Intermediate-Upper Elementary. It aims to bring to students the importance of this area of instruction. Problems and new teaching techniques provide the substance of many discussions. Members also take part in many social activities.



Time out for frolic.

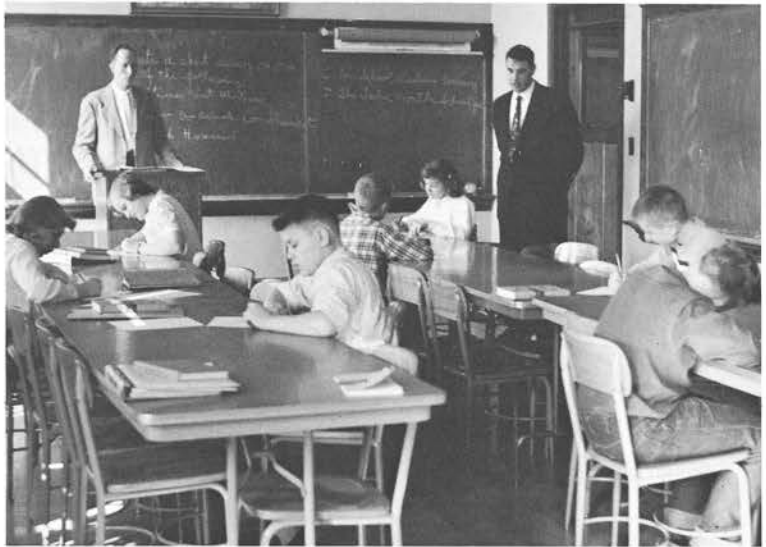




Raymond M. Rightsell
Director of the Division
of Secondary Education
Chairman of the Physics
Department
Physics, Astronomy

Secondary Education

The curriculum of the Division of Secondary Education aims to give students a thorough scholastic background, skill in teaching techniques, and help in developing a well-adjusted personality capable of leadership in education and co-curricular activities of junior and senior high schools. A major field and usually two minor fields of study are chosen by the end of the first year. Twenty credits of education courses including ten credits of supervised teaching are required to receive a recommendation for teaching placement.



Student teachers conduct a class at the Campus Junior High School.



Marjorie Pfiffner
Supervisor of Science

Lila M. Hibbs
Supervisor of History,
Geography
Advisor to Tau Gamma
Beta



Lulu O. Kellogg
Supervisor of Mathematics,
English





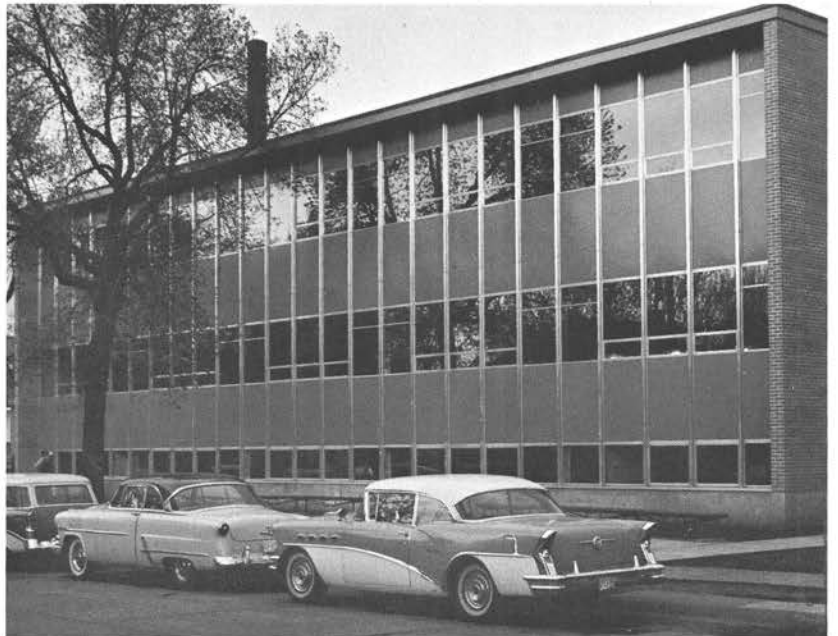
This view of the unfinished kitchen shows some of the modern equipment that will be used for food service.

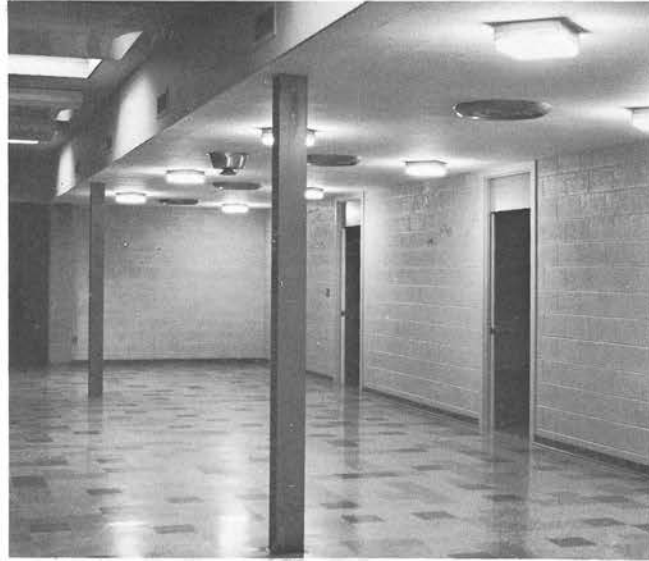
The New Union

Finally . . .

The new Union is open for business! After quite a few years of waiting, CSC has a Union building. It houses food facilities for all students and meeting rooms for the many campus activities. For teas and parties, informal get togethers, or just a cup of coffee — the Union is for your use.

An outside view of the new Union building.





This view of the Union shows the meeting rooms off the main hall of the second floor.



The main hall of the Union.

The new Union welcomes you!



The New Union is Initiated

The first to use the new Union were the graduates of 1959. They christened the building with a party sponsored by the Social Committee of the faculty. On the day of graduation, a tea and social hour were held for the graduates, their guests, and the faculty.



These pictures show views of the main hall of the new Union. Graduates and their guests relax with punch and cookies.



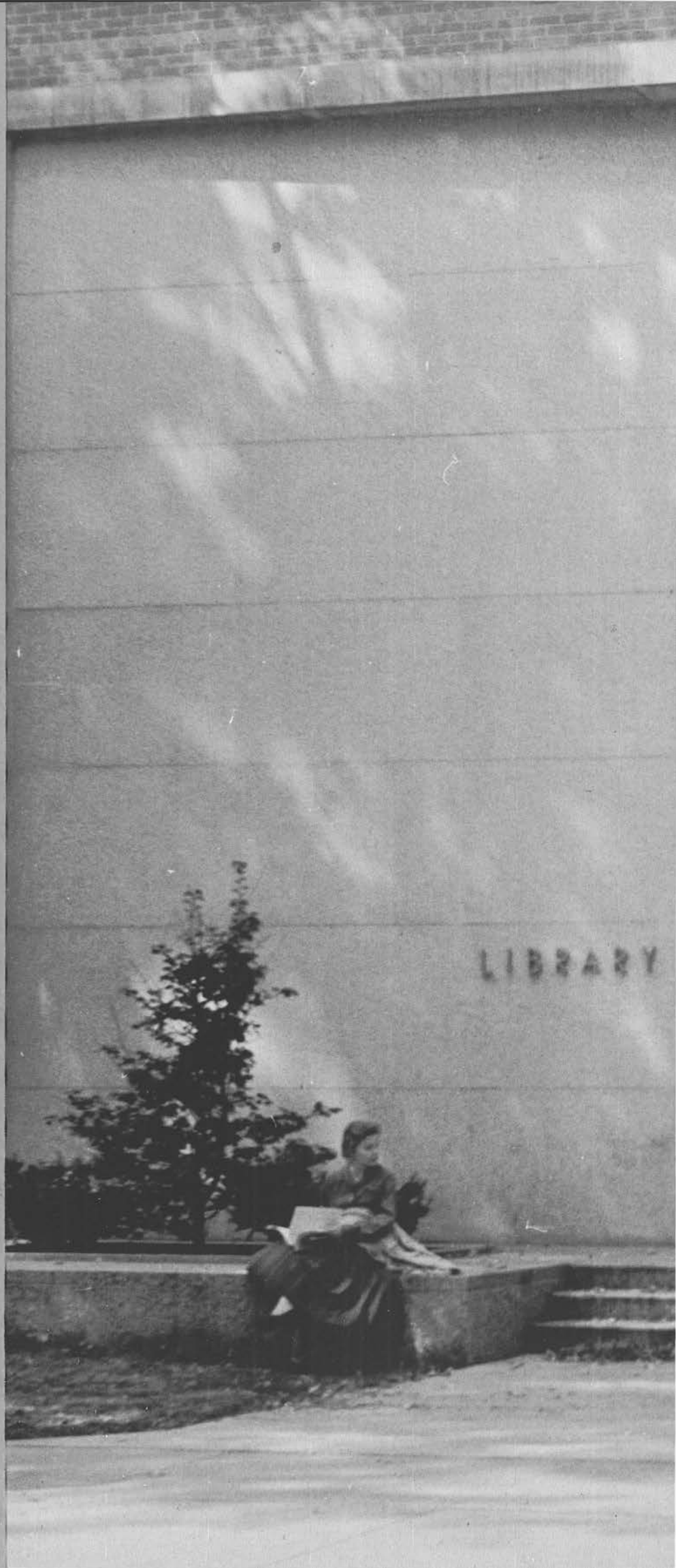
Walking . . .

*to take a test?
to meet a friend?
to attend a class?*

. . . to CSC



L
I
B
R
A
R
Y





A library with many facilities



The lobby welcomes you to the library's many fine facilities.

Students of CSC are fortunate to have access to a well equipped library. In addition to the general and reference collections, the library has a reserve collection. These books are placed on short term loan by instructors for students of their classes as assigned and collateral reading.

The library is a depository for federal documents and for county and regional archival and historical materials. These facilities are provided

for the general public of Central Wisconsin as well as for the study and research for students.

Many other facilities are provided by the library. A small (but growing) record collection is available to students for use in the library's turntables. Typewriters and a micro film projector are also ready and waiting to be used by students and faculty.

Esther Kearby
Reserve Librarian



Librarians
Syble Mason





Nelis R. Kampenga
Head Librarian
Bibliography



Loretta Vroble
Text Librarian

John Gillespe



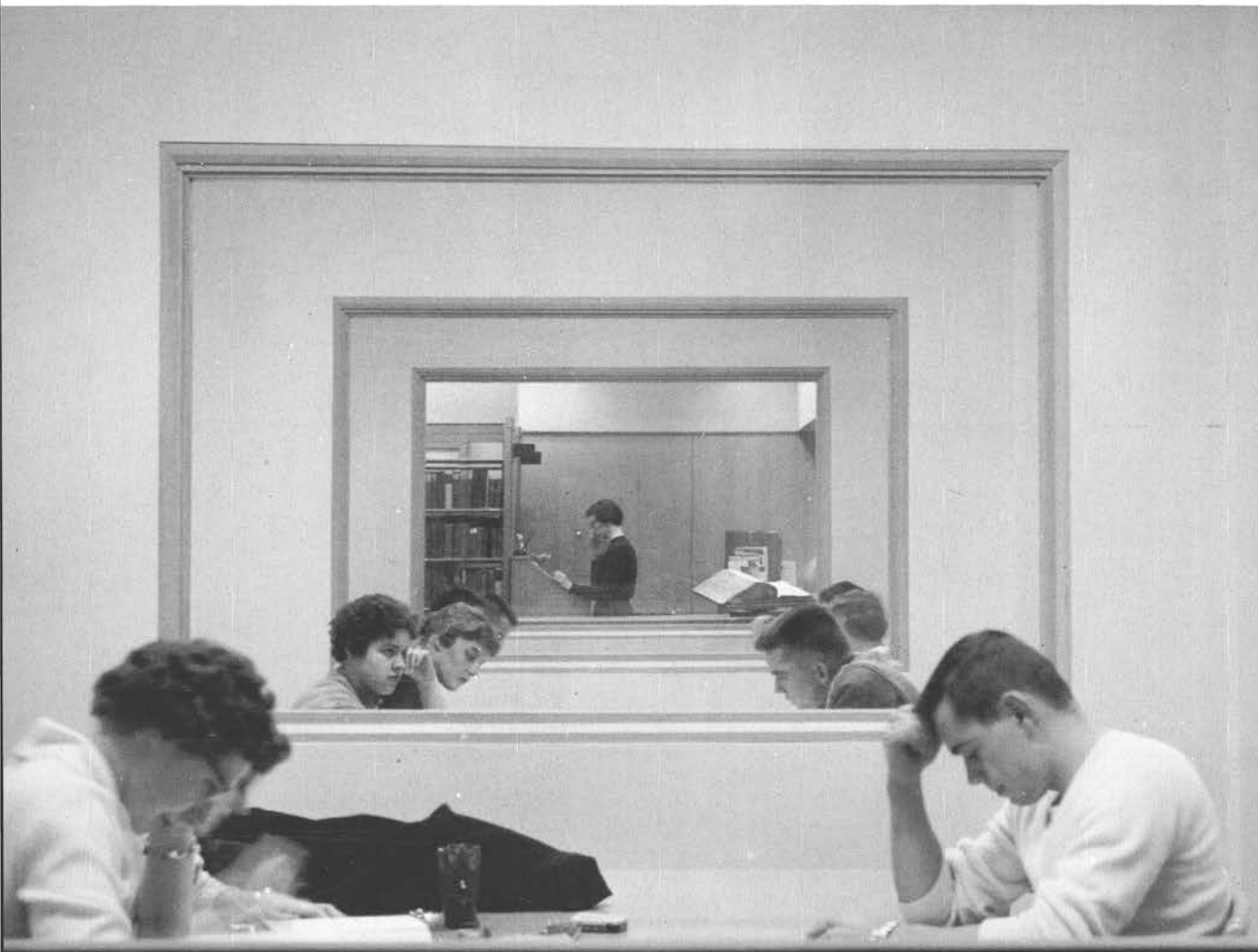
Margaret Ritchie



Quiet!

Students at Work

Conference rooms in the reserve reading room permit conversation in the usual quietness of the library.





Concentration...

... is the order of the day in the hushed atmosphere of the library.



Periodicals of all sizes and content — for you!



Library Theater

The library theater has many and varied uses. Organizations use the theater for meetings and conventions. Students browse through the paintings and other art works on exhibit. Artists from throughout Wisconsin have shown their work in the theater. Recitals, operettas, one act plays, guest speakers and performers use the theater. The Film Series presents many films, some of them foreign, which are open to the public as well as college students and faculty.



A bearded student readies the projector for a film series showing.

A painting and handicraft exhibit in the library theater.



Student Supply Store



CSC students have the opportunity to purchase supplies and books at the Supply Store and the Book Store. In addition to the pencils, paper, notebooks, and usual supplies, the Supply store has cards for the birthday, or shut-in, CSC stationery, outline books, and even candy for that sweet tooth.



Eugenia Schuler
Manager of the
College Book Store

College Book Store

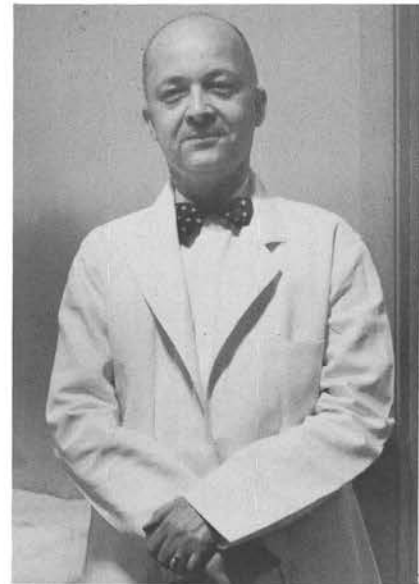


The Book Store has books for every taste — literature, history, politics, art, information and reference books, "Pogo" books, cookbooks, and a large selection of children's books. Buy for school use or for gifts — all on a ten percent discount.



Helen Hanson
College Nurse
Resident Director of
Nelson Hall

Student Health Service



Dr. Robert Slater
of the Rice Clinic
— He'll fix you up!

Ills, aches, and pains are taken care of by the nurse and doctors of the student health service. You may get your throat swabbed, have a pulled muscle or sprained ankle treated, have a prescription prescribed, or just find out what it is that is ailing you. The Rice Clinic of Stevens Point provides doctors for the protection of the health of the students of CSC.



The music listening room of the library provides excellent equipment and acoustics for good music listening. Here, a group of music students use its quietness to calm nerves before a performance.



The Library

viewed from the Union steps...

... busy with students doing research for that term paper, discussing a point with a friend, looking for that magazine from way back when, standing in line for a reserve book, checking out a novel for a report due tomorrow, or just leisurely browsing.

D
O
R
M
S





Nelson Hall



Women's Residence Hall



Each year, the women of Nelson Hall sponsor the Nelson Hall Formal. This is a one flower formal where the girls ask the fellows. The event, held in the Nelson Hall cafeteria, is open to all students.



Besides being the women's residence hall, Nelson Hall houses the college cafeteria. Residents of all three dorms eat their meals here. With the opening of the new Union, Nelson Hall food service will be discontinued.



This college switchboard is a new addition to Nelson Hall. All telephone calls for the college buildings come into the main switchboard. Callers are then connected with their party by the operator.

Student Union

The student union is housed in the recreation rooms of Delzell Hall. Here, students may have a snack, watch TV, play cards, checkers, and enjoy themselves in numerous other ways. Hi-fi dances and listening evenings were sponsored for hi-fi enthusiasts. Many organizations use the Union for their activities. Such events as dances, teas, and parties are held in the Union. With the opening of the new Union building, the men of Delzell Hall will have the recreation rooms to themselves.



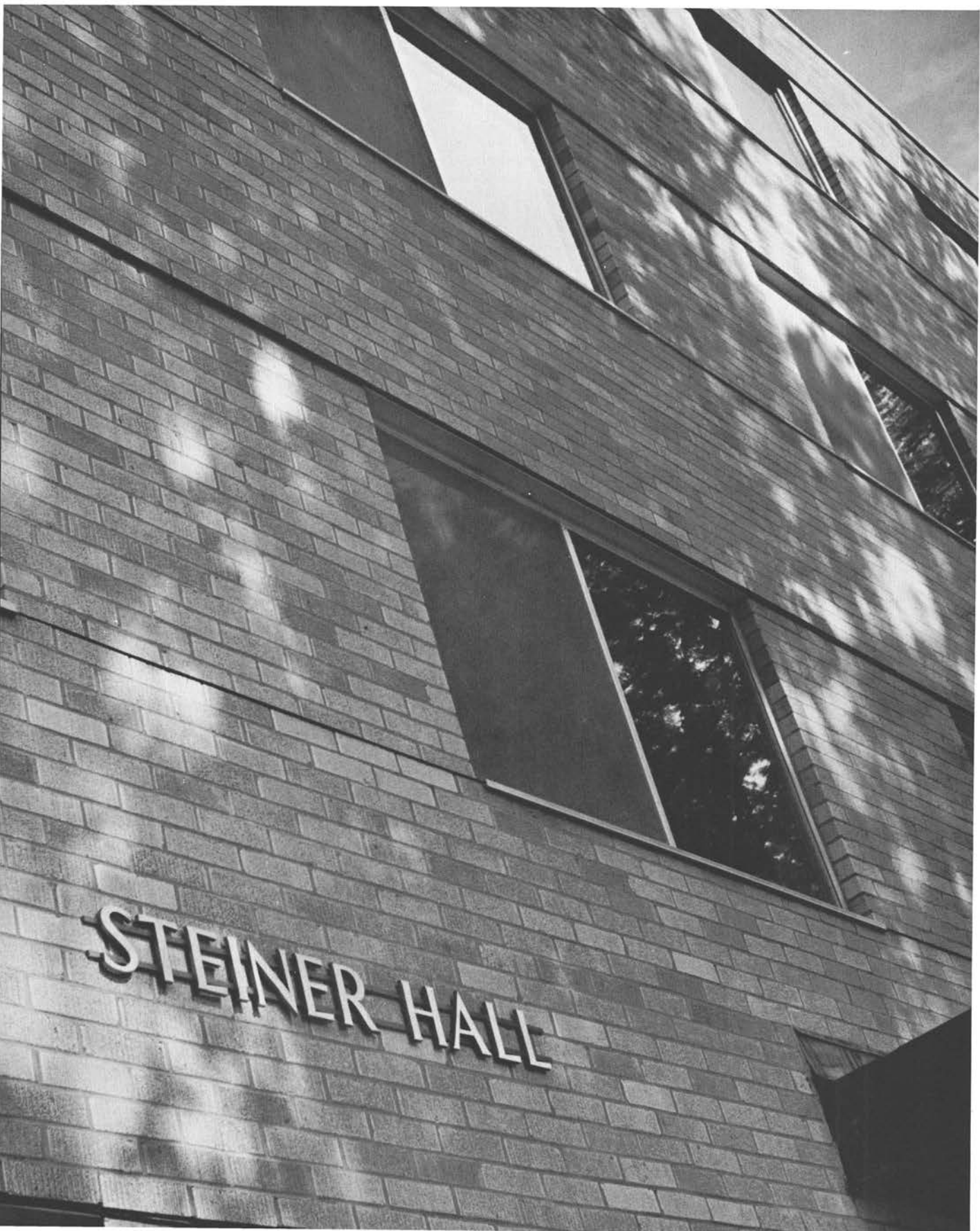
Delzell Hall

Men's Residence Hall

Delzell Hall, with its recently added third floor, welcomes alums at Homecoming time.



Steiner Hall



Men's Residence Hall

The copper name plate announces to all the name of the newest men's dorm — Steiner Hall. The dorm, named after Herbert R. Steiner who was Dean of Men until his death a few years ago, houses over two hundred men.



Ellen Specht
Director of News Service



The man at the desk will gladly direct you to the photography exhibits, or locate that hard to find gentleman.

Photography exhibits presenting the work of area photographers are displayed in the recreation room of Steiner Hall. These showings, open to the public, were enjoyed by many students.



A
B T
O O
U W
T N





All Around the Town

The activities of CSC's students do not end at the boundaries of the campus. The influence of the college is felt in every part of Stevens Point. Most of the athletic events take place off campus — at Bulkolt Park, and P. J. Jacobs and Pacelli High Schools. Students have contributed to many community activities.

The Red Cross Blood program has realized much of its success through the efforts of college students and faculty. Students bring money into Stevens Point through their purchase of many products. In turn, college students give their time and efforts in jobs. Students find much of their recreation in city facilities. The city's swimming pools, softball diamonds, football fields, winter sports areas, and numerous other facilities are used by college students. Yes, even telephone booths. Indeed, CSC extends all around the town.



Community Activities



Recreation

Consumer Buying



Religious Organizations

The religious organizations on the campus play a large part in the life of CSC. Students realize that in the fast pace of study, work, and recreation away from their homes, it is necessary and profitable to keep in touch with their religious faith. These organizations provide recreation with members of one faith. They provide stimulating and refreshing discussions, thought, and talks which help the student to keep on the correct path. Nearly every religious denomination is represented by a campus religious organization.

These Newmanites are preparing for an evening of skating at the Lo-Nor on a Newman outing.



The Newman Club bulletin board carries information of interest to CSC Newmanites. Here, it displays pictures of the officers with their chaplain, Father Wilger.

Roman Catholic Student Group
Newman Club

Christian Science



Caryl Seif and Linda Wilson join Miss Geneva Borden of Stevens Point for a discussion.



LSA officers: Standing — J. Haugsby; J. Ungrodt; B. Caylor. Seated — L. Kuse; J. Thorson; M. Collins.

Lutheran Students' Association

LSA members have some fun after a meeting at Trinity Lutheran Church.





Homemade candy for sale by Wesley members.

Methodist Student Group

Wesley



Wesleyan members meet with Rev. Saito at St. Paul's Methodist Church.

Baptist Student Group

Wayland members gather for some fun and a picture taking party at the First Baptist Church.



Wayland



Gamma Delta members meet with Rev. Dake at St. Paul's Lutheran Church.

Missouri Synod Lutheran Student Group

Gamma Delta



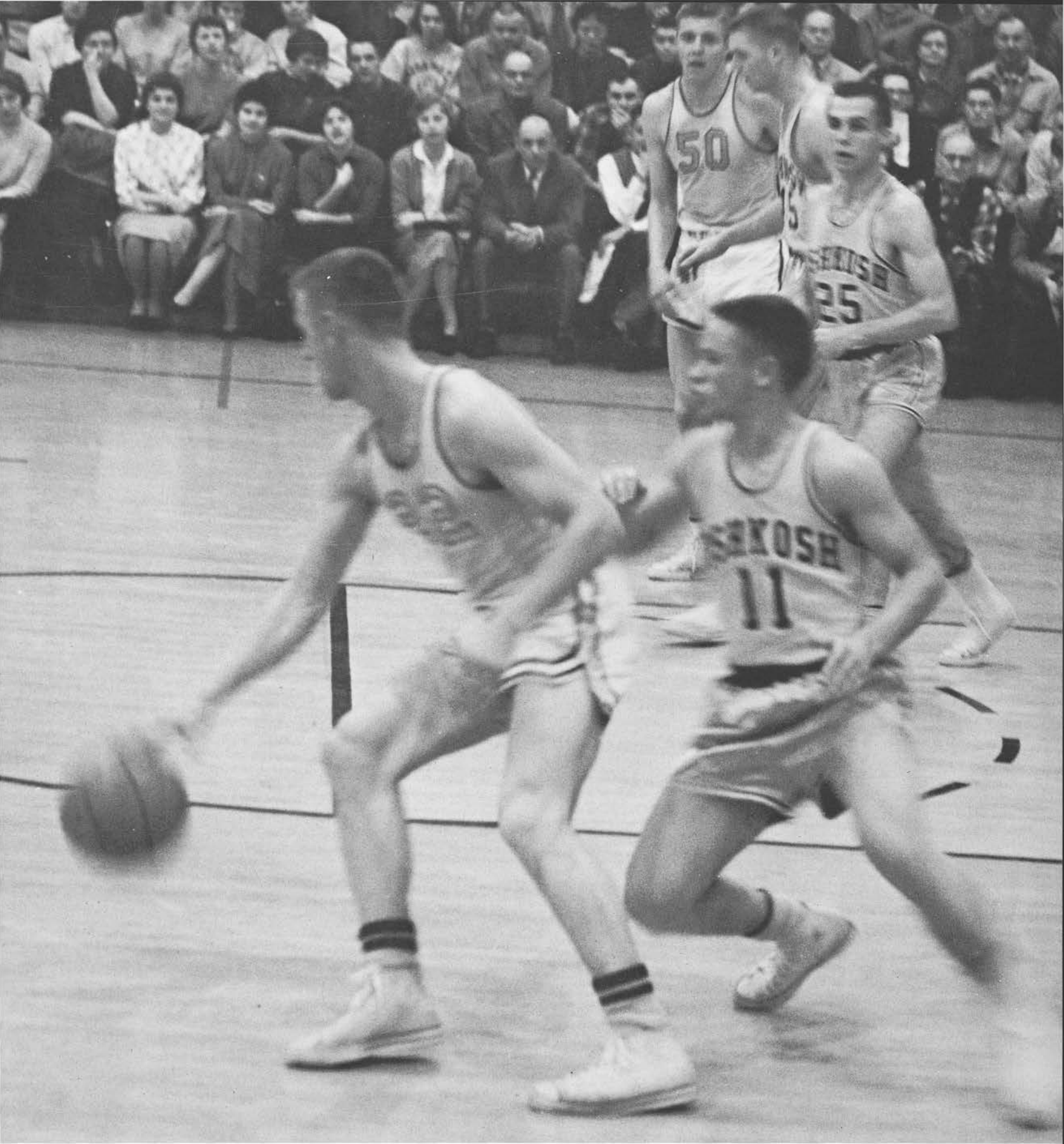
Officers, Anna Hanson, Gail Nelson, Mike Meier, and Becky Erickson meet for a business session.

Canterbury

Canterbury members meet at the Episcopal Church Of The Intercession.



Episcopal Student Organization



Sports

Women's Sports

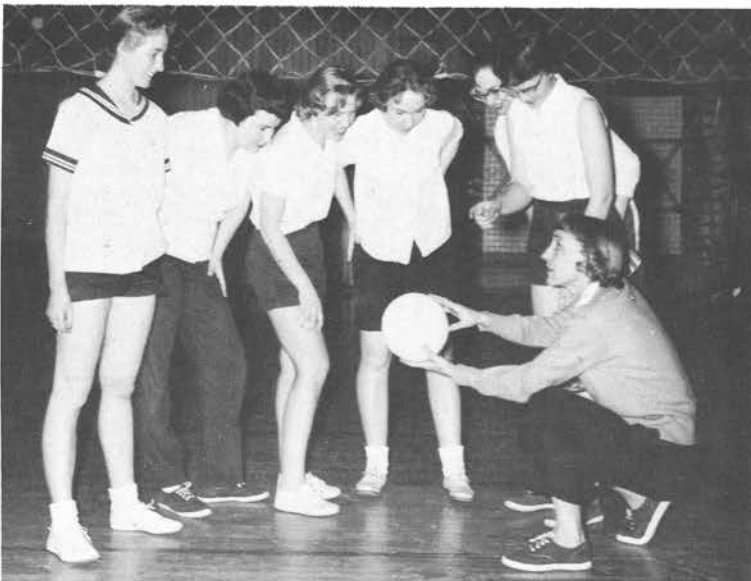
Women's Recreation Association

All college women are invited to participate in the activities of the Women's Recreation Association. It supervises and sponsors a variety of recreational activities, many of which the men students are invited to participate. "Christmas Cheer" has become a traditional event with WRA. The entire student body and faculty are spiced cider and Christmas cookies as guests of WRA. Each spring the association sponsors a playday for area high schools. Members of the club act as hostesses, referees, guides, and advisors for visiting groups.



Marjorie Schelfhout
Physical Education
Advisor to College Women's
Association, Women's Rec-
reation Association.

Miss Schelfhout explains a fine point of the game.



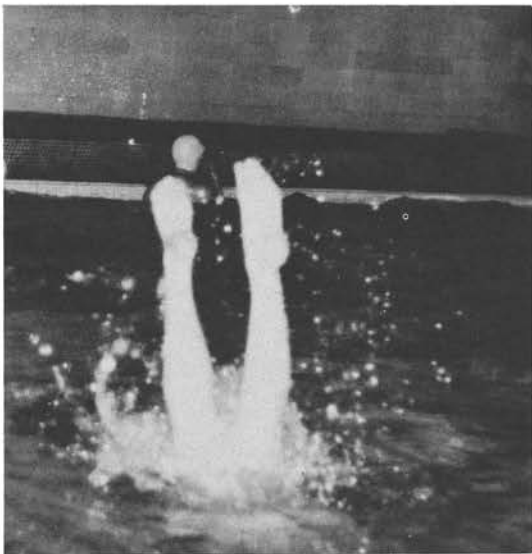


Almost, but not quite.

The trampoline is a favorite activity of the phy ed classes.



Ker splush!



Freshman women have the opportunity to choose swimming in place of physical education for their required credit. Swimming classes are held at noon at P. J. Jacobs High School pool. During the year, WRA sponsors evenings of co-ed swimming at the pool.



Team Work

Athletics play an important part in every college student's co-curriculum. For men who wish to compete in interscholastic sports, CSC offers football, basketball, wrestling, baseball, track, tennis, and golf. Many intramural sports are provided also. Some of these are basketball, volleyball, softball, and bowling.

Women students are not forgotten in the sports field. Recreational activities such as basketball, softball, badminton, tennis, golf, and archery, plus many other sport and social activities are sponsored by the Women's Recreation Association.

At its very best athletics serve to develop an attitude of team work and fair play, and improve physical condition through well planned exercise. This is the spirit in which all CSC sports are conducted.

Keeping Spirits and Enthusiasm High

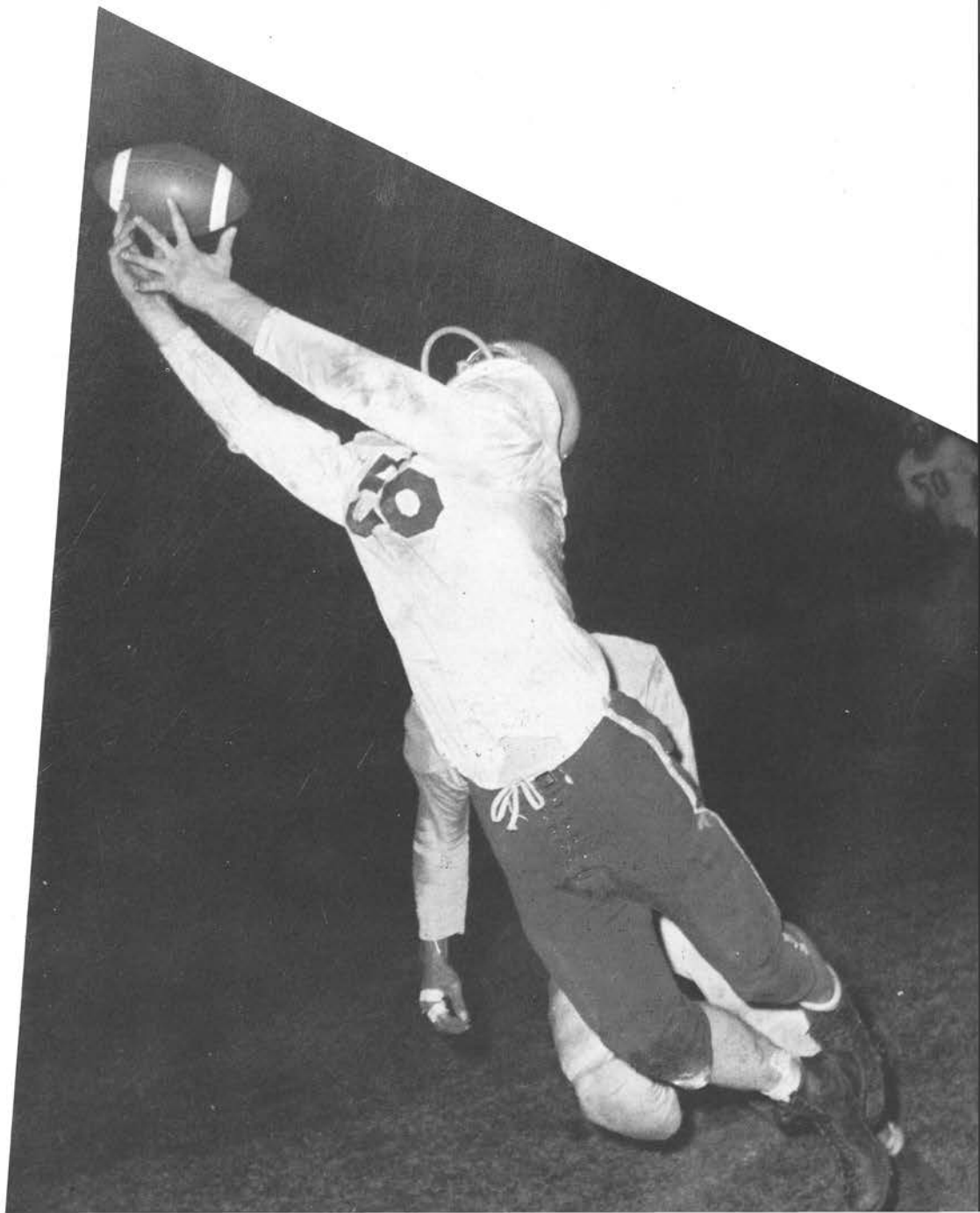
Cheerleaders





Let's get in there and fight!

Football





Top Row — Coach Counsell; Asst. Coach Brodhagen; A. Helminski; D. Kalata; R. Hoenisch; C. Kobishop; J. Luedtke; C. Nolan; D. Tucek; K. Kukulka; H. Gee; D. Schallert; T. Leonard; W. Poppy. **2nd Row** — J. Crook; P. Cole; B. Fischer; R. Klestinski; O. Schwerdtfeger; C. Botwinski; P. Fraley; B. Kuse; D. Yenchesky; G. Wouters. **3rd Row** — P. Kluck; M. Sroda; L. Drees; D. Johnson; R. Hein; K. Harrison; T. Ludeman; D. Schmidtke; B. Maedtke; J. Bush; J. Chappell.

**1958
State College Standings**

	W	L	T
River Falls	6	0	0
Stevens Point	5	0	1
Whitewater	4	2	0
Oshkosh	4	2	0
Eau Claire	3	3	0
LaCrosse	3	3	0
Platteville	1	4	1
UWM	1	5	0
Superior	1	5	0
Stout	1	5	0

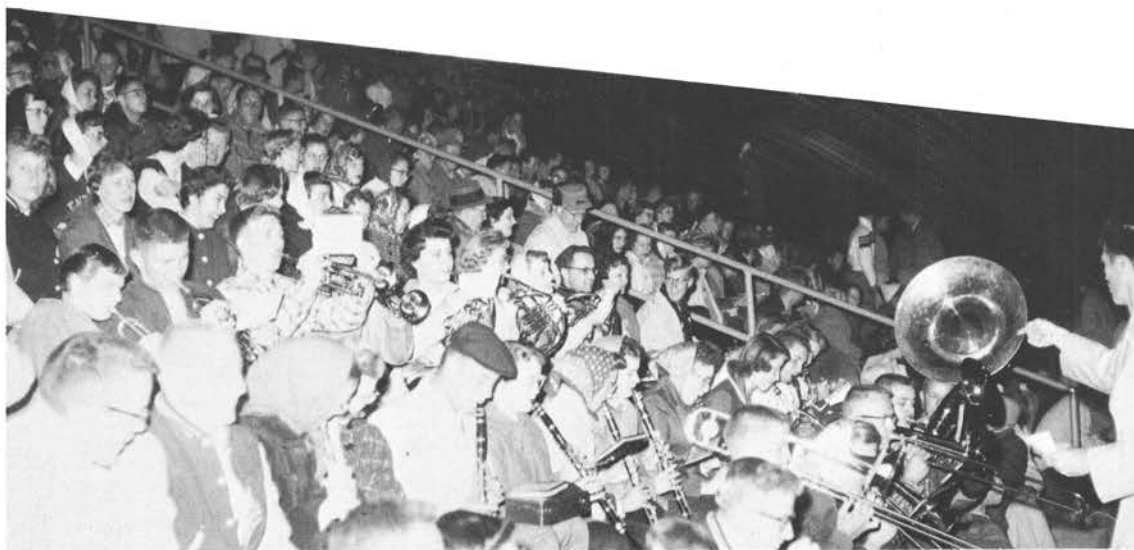


The Scores

CSC 28	Hamline	14
CSC 14	River Falls	2
CSC 14	Platteville	14
CSC 21	Oshkosh	20
CSC 19	UWM	12
CSC 22	Whitewater	14
CSC 34	Eau Claire	8
CSC 32	Superior	14

Appointed co-captains of the Pointer squad for the Homecoming game with Eau Claire were these four 1959 graduates: Phil Cole, Jim Luedtke, Ron Hoenisch, and Ted Ludeman.





The band joins the spectators in cheering on our Pointers.

A Pointer resultant on Oshkosh.



Destination Touchdown!





Finis



Hale F. Quandt
Physical Education
Director of Athletics
Head Basketball Coach

Left to Right — Asst. Coach Counsell; J. Krull; L. Sroda; B. Sekel; D. Kottke; C. Nolan; T. Gurtler; S. Antcliffe; L. Luebstorf; B. Curran; J. Hansen; B. Kuse; B. Wojtusik; Coach Quandt; Manager B. O'Gara in center.



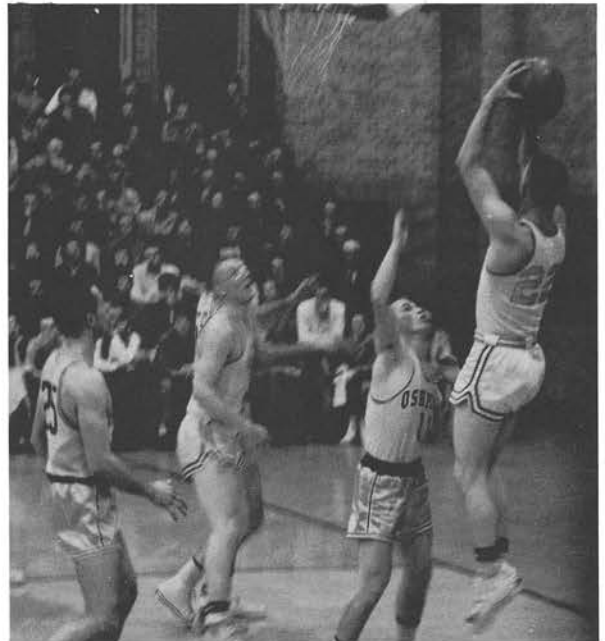


Let's get in there and really get them.

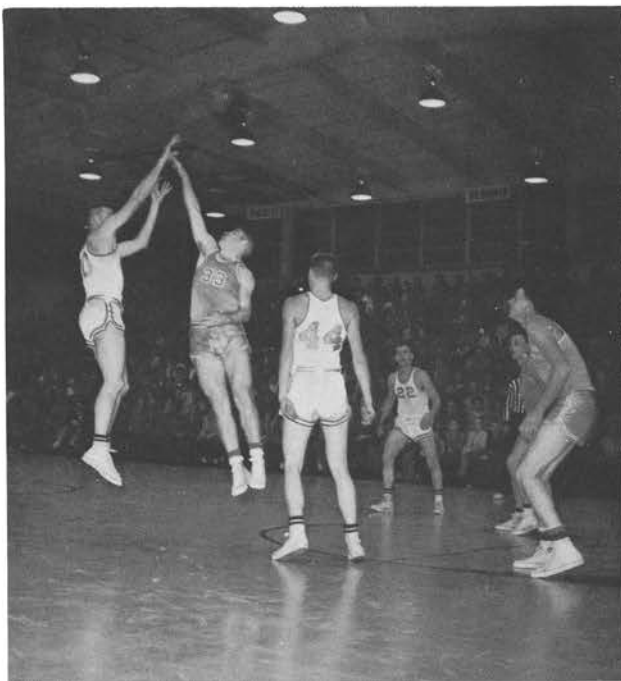
The Pointers in Action

1958-59 State College Conference Standings

	W	L
Platteville	11	1
UWM	10	2
LaCrosse	8	4
Stevens Point	6	6
Superior	6	6
River Falls	4	8
Stout	3	9
Whitewater	2	10



Krull jumps, shoots two points!



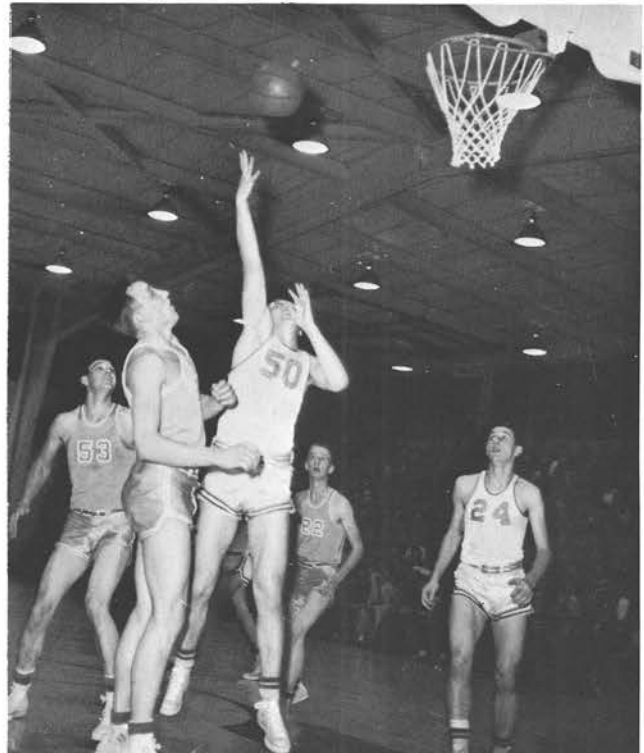
Tip-off Time!

Jim Marko, flashy Pointer guard, scored his 1000th point in his college basketball career during the game with Oshkosh on March 2.



The pep band adds to the spirit and excitement of the game.

Luebstorf grabs another rebound.





The mothers of the players wait at the center circle to receive their carnations from their player sons.

Each year the mothers of the basketball team are honored at special ceremonies between halves of a home game. As each mother is introduced, she steps forward to receive a corsage and a kiss from her player son.

A Special Night for Mom

The Scores

CSC 66	Winona	89
CSC 59	Northland	57
CSC 90	Milton	79
CSC 88	Lakeland	32
CSC 68	Platteville	72
CSC 59	Lincoln U	70
CSC 81	Ripon	57
CSC 92	UWM	101
CSC 68	LaCrosse	54
CSC 80	Superior	86
CSC 87	Whitewater	44
CSC 64	Oshkosh	66
CSC 84	Platteville	94
CSC 80	St. Norbert	83
CSC 75	Lawrence	73
CSC 76	LaCrosse	80
CSC 63	Stout	67
CSC 50	UWM	43
CSC 68	Whitewater	59
CSC 85	Oshkosh	80

Watch that one spot over there!





1st Row — A. Britten; W. Radtke; B. Freiman; A. Mazmalis; H. Yetter; J. Blosser; E. Sorenson; N. Dorn; B. Gibbs. **2nd Row** — B. Porter; R. Gerstenkorn; K. Pagel; W. Poppy; D. Henn; W. Dowty; B. Komoroske; B. Margsert. **3rd Row** — J. Meuret; M. Korfmacher; G. Van Wormer; R. Klomoske; J. Kiefert; H. Ozakor; E. Coombs; F. Soulati; L. Johnson; Coach Brodhagen.

Wrestling

State College Conference Standings

1st	UWM
2nd	CSC
3rd	Superior
4th	Stout
5th	River Falls
6th	La Crosse

Eugene Brodhagen
Physical Education
Head Wrestling
and Track Coach



300 Victories

The combined victories of these wrestlers during their college careers totals 300. A remarkable record for these fine wrestlers!



Eugene Sorenson

Jack Blosser

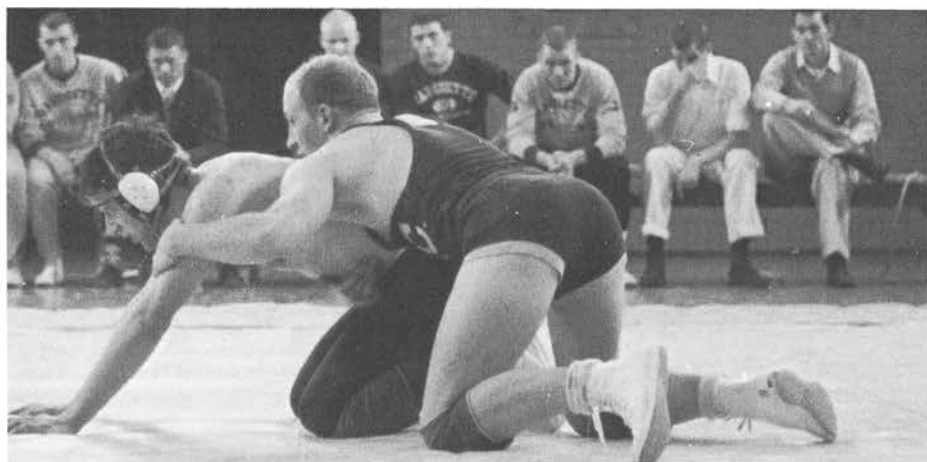


Hank Yetter



AAU Tournament	
CSC	30
UWM	23
Wisconsin	25
Marquette	11
River Falls	9
Stout	1
Ripon	1

Eugene Sorenson waits for the starting whistle.





Top Row — Coach Counsell; B. Kuse; S. Antcliffe; D. Kottwe; Manager D. Strasser.
2nd Row — D. Busse; J. Pease; L. Ferries; P. Cole; D. Roman; J. Quandt; D. Schallert.

Baseball



Duane Counsell
 Physical Education
 Head Football
 and Baseball Coach

Ace pitcher, Bill Kuse, warms up.



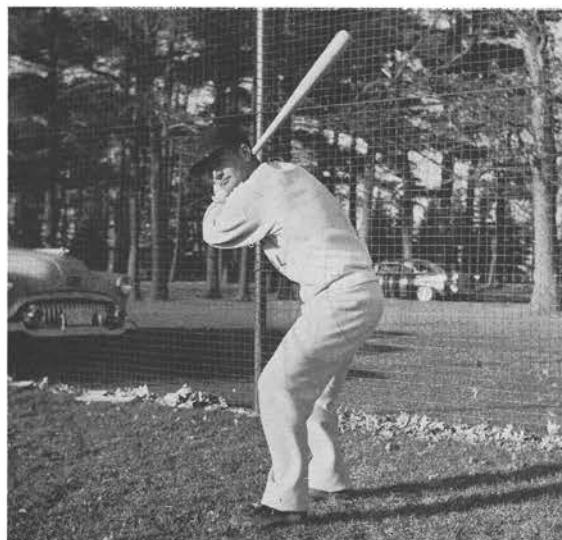


A Pointer batter waits on deck as the batter heads for first base after a hit.

Bukolt Park hosts the Baseball Games



Pointer batters wait for the pitch during a warm up session.



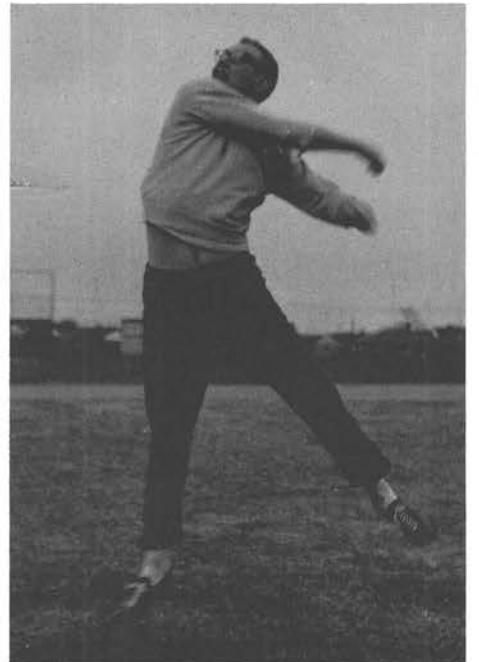


Take off for the 440 yard dash!

Track and Field



The shot and the discus sail for possible record distances.



"S" Club



Karen Braem, a blonde sophomore from Tigerton, was chosen as the "S" Club's Sweetheart to be their candidate for Homecoming Queen.

The "S" Club is the honorary organization of men who have won a letter in a varsity sport. Those who have fulfilled the requirements established by the Athletic Committee are awarded the official "S" sweater. From the standpoint of function, the organization is a service group. It provides some of the awards, and stimulates interest in varsity athletics. Homecoming is one of the "S" Club's big activities. The Homecoming dance is sponsored by the group, and members take part in a vigorous campaign for Homecoming Queen.



Members of the "S" Club form a guard for Karen as she is presented to the students at the candidates assembly.

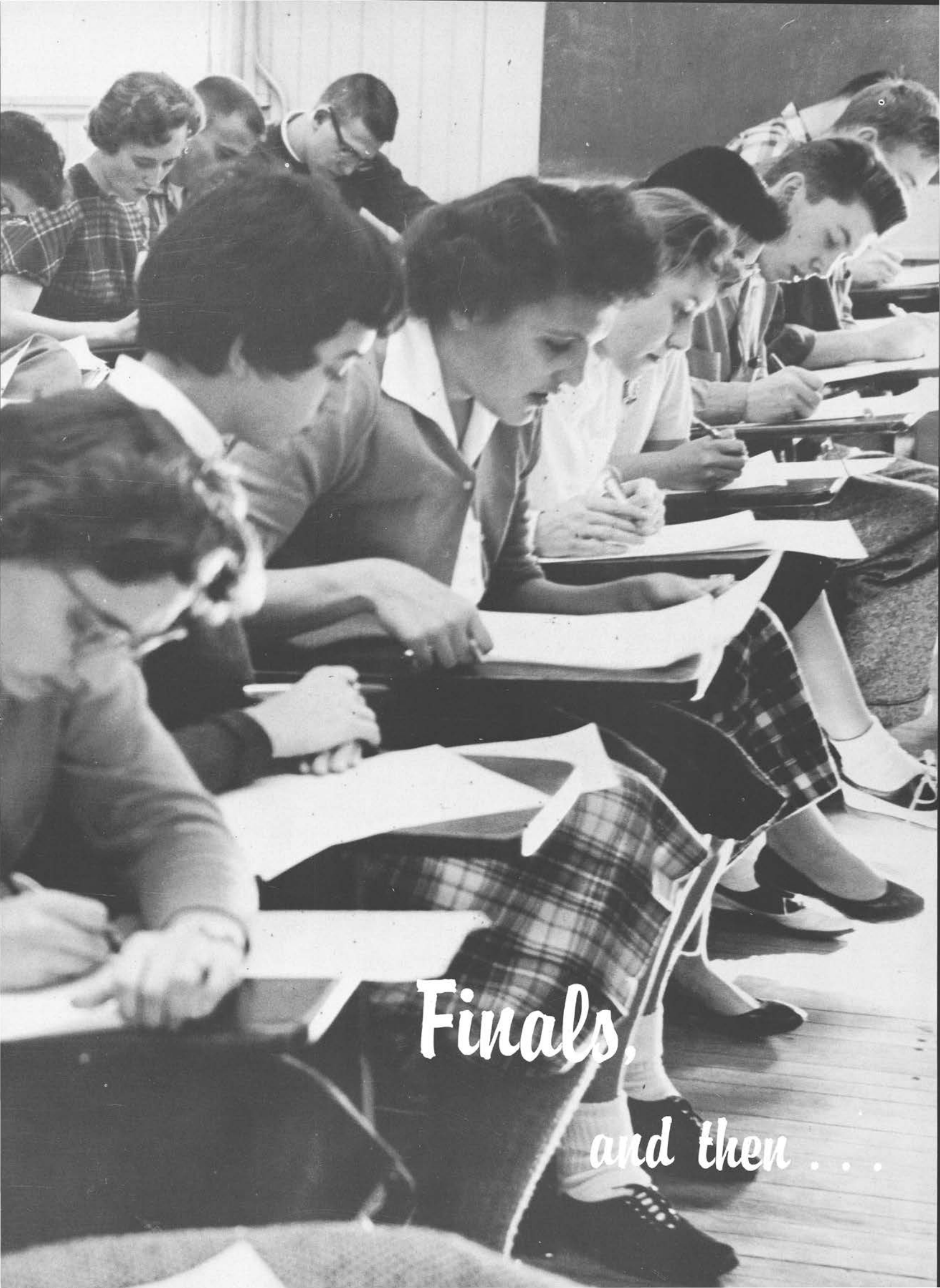


Junior and senior "S" Club members in the line up — **Top Row:** J. Storm; N. Fuller; L. Luebstorff. **2nd Row:** N. Dorn; B. Busse; J. Pease; L. Sroda; D. Rice. **3rd Row:** C. Kobishop; P. Kampke; J. Kiefert; T. Koehn; L. Ferries; R. Hein. **4th Row:** P. Boehmer; D. Schallert; J. Blosser; H. Yetter; J. Meuret; J. Marko.









Finals,

and then . . .



Graduation

Athletics

Culture

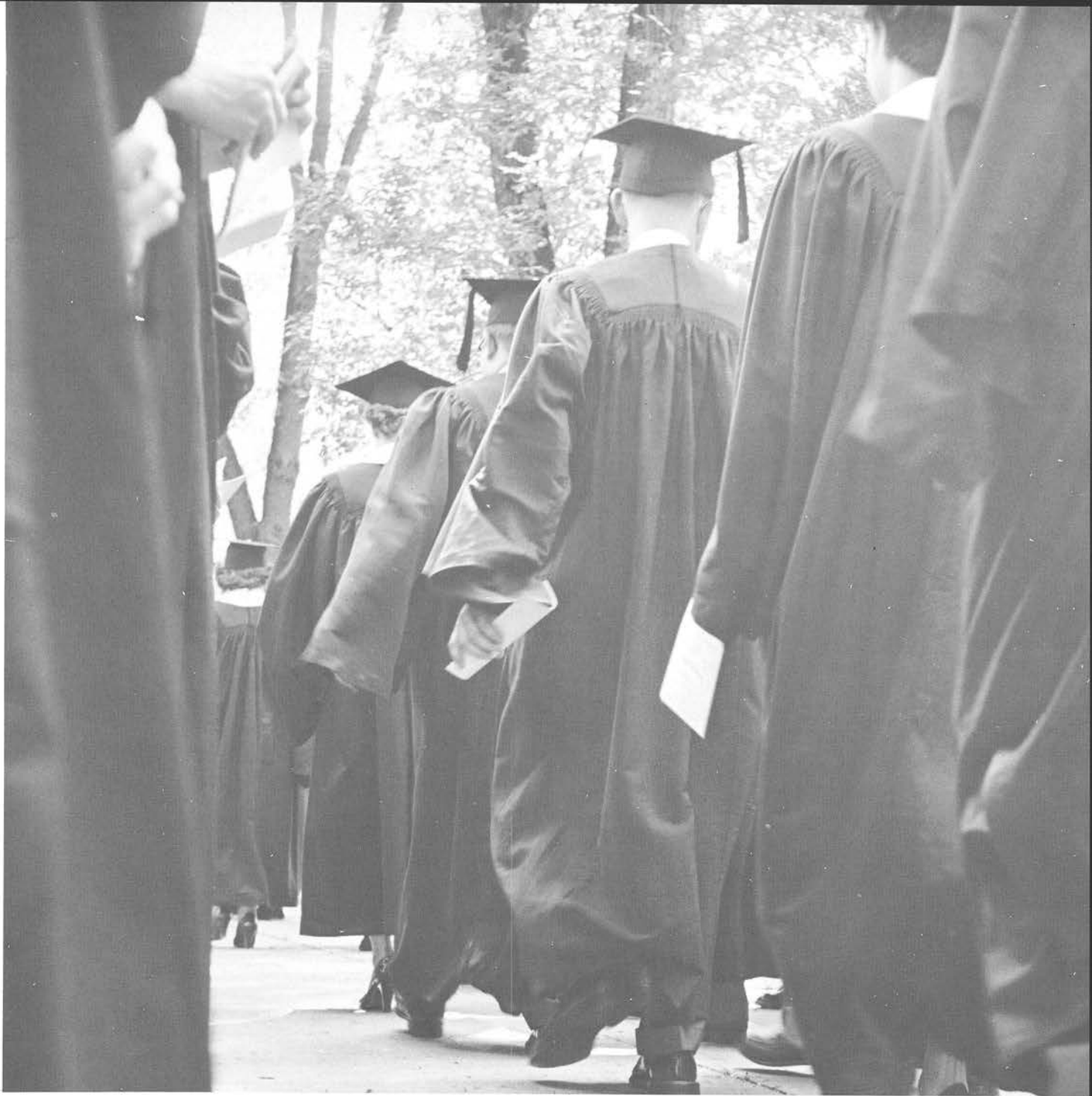
Knowledge

Companionship,

not really ending,

just. . .





*...moving on to higher
exemplifications*

Graduates

of 1959

Lila Ablard

Campbellsport, Wis.

Secondary

Major: Home Economics

Minor: General Science
Sigma Zeta, Home Economics Club, Editor Wesley Whisper, Press Representative of Tau Gamma Beta and Wesley, Wesley, Tau Gamma Beta, Junior Dorm Counselor



Pauline Jean Ainsworth
Shawano, Wis.

Secondary

Major: Home Economics

Minor: General Science
Sigma Zeta — Vice President, Home Economics Club, Women's Recreation Association, National Education Association, College Women's Association, Student Council, Intersorority Council, Wesley, Tau Gamma Beta — President and Secretary





David V. Amundsen
Racine, Wis.
Letters and Science
Major: Conservation
Biology
Minor: General Science
Dorm Council, Golf
Team



Robert Bach
Minocqua, Wis.
Letters and Science
Major: Conservation
Minor: Biology
Art

Karen Rae Beebe
Stevens Point, Wis.
Primary
Primary Council, Inter-
sorority Council- Presi-
dent, Girl's Glee Club,
Canterbury Club, Tau
Gamma Beta — Vice
President, Homecoming
Queen Candidate '56



Diane Baehler
Seymour, Wis.
Secondary
Major: Home Econom-
ics
Minor: General Science
Sigma Zeta, Home Eco-
nomics Club, College
Women's Association
President, Intersorority
Council, Tau Gamma
Beta



Emalee C. Berth
Oshkosh, Wis.
Intermediate
Round Table, Choir,
Glee Club, Madrigals,
College Theater, **Pointer**
Business Manager,
Gamma Delta, Women's
Recreation Association,
Sophomore Class Treasurer



LeRoy Bidgood
Adams, Wis.
Letters and Science
Major: Geography
Minor: German
Siasefi



David Bloch
Wausau, Wis.
Secondary
Major: Biology
Minor: Conservation
General Science

Iris Bocher
Shawano, Wis.
Letters and Science
Major: Home Economics
Minor: Art
Home Economics Club,
Trigon





Paul Boehmer
 Prairie du Sac, Wis.
 Letters and Science
Majors: Biology
 Conservation
 S Club, — Secretary,
 Baseball

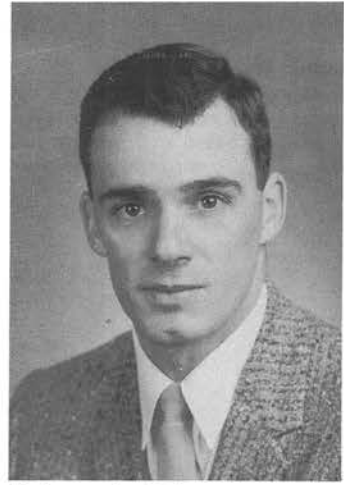


Gwenith Bolz
 Medford, Wis.
 Primary
 Primary Council, Gamma Delta, Women's Recreation Association

Mary Louise Braatz
 Stevens Point, Wis.
 Secondary
Major: English
Minor: Speech, German
 Sigma Tau Delta, Alpha Psi Omega, College Theater, **Pointer** News Editor, News Representative for Stevens Point Journal, Wesley, German Club — President



Barbara Ellen Bowen
 Stevens Point, Wis.
 Secondary
Major: English
Minor: Speech, German
 Sigma Tau Delta — President, Glee Club, College Theater, **Pointer**, Gamma Delta, Omega Mu Chi, Senior Class Treasurer



Robert J. Bricco
White Lake, Wis.
Intermediate
Round Table



Patrick E. Buchberger
Marathon, Wis.
Secondary
Major: History
Minor: General Science
Geography
Newman Club, 550's,
Basketball, Intramurals



Mary Jo Buggs
Stevens Point, Wis.
Secondary
Major: English
Minor: History, Speech
Sigma Tau Delta, **Pointer** — Editor, Newman
Club, Omega Mu Chi —
President, Intersorority
Council, Sophomore
and Junior Class Secretary

Mary Ann Camber
Pulaski, Wis.
Intermediate
Alpha Kappa Rho, Alpha
Psi Omega — President,
Round Table, Choir,
Madrigals, College
Theater — Secretary,
Pointer, Newman
Club



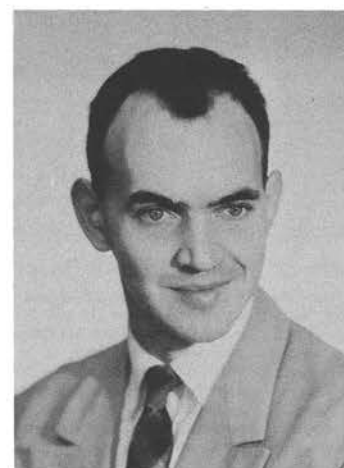


Bob Case
Crandon, Wis.
Secretary
Major: English
Minor: Physical Education, History
550's, Intramurals



Lyle Cathcart
Abbotsford, Wis.
Letters & Science
Major: Conservation
Minor: Biology
Alpha Kappa Lambda

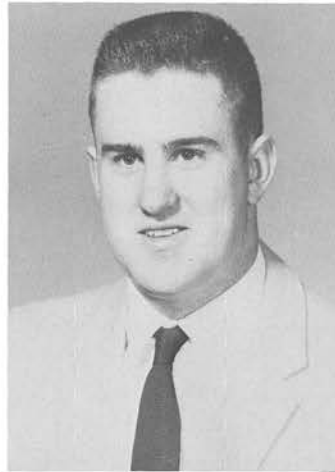
Irene Ya Chien Chen
Hongkong, China
Letters and Science
Major: Chemistry
Sigma Zeta, Wayland Club, Alpha Sigma Alpha



William F. Check
Stevens Point, Wis.
Letters and Science
Major: General Science
Minor: Physics, Math, Geography



Conrad V. Christensen
Marshfield, Wis.
Secondary
Major: Biology
Minor: Physical Education
Conservation
Trigon, Phi Sigma Epsilon



Richard L. Christensen
Pittsville, Wis.
Letters and Science
Major: Chemistry
Mathematics
Minor: Physics
Wesley



Robert H. Christoffersen
Ogema, Wis.
Letters and Science
Major: Chemistry
Minor: Math

Dan J. Cooper
Clintonville, Wis.
Secondary
Major: History
Minor: English
Geography
Siasefi





Mrs. Therese Costigan
Lyndon Station, Wis.
Primary
Major: English
Minor: Biology
Newman Club



Ruth Delight Curtis
Wisconsin Rapids, Wis.
Primary
Primary Council, Band

Mary Lou Davis
Stevens Point, Wis.
Secondary
Major: Home Economics
Minor: General Science
Home Economics Club,
Wesley, Tau Gamma
Beta, Orchesis



Don L. Danielson
Waupaca, Wis.
Secondary
Major: Biology
Minor: Conservation
General Science
Interfraternity Council,
Lutheran Student's As-
sociation, Sigma Phi Ep-
silon, Golf, Tennis



Robert H. Dickinson
 Waupaca, Wis.
 Secondary
Major: English
Minor: Geography
 Psychology-Philosophy
 Sigma Tau Delta, Student Council — Vice President, Student Union Board — President, College Theater, Critique, Pointer, Wordsworth Staff, Newman Club, Tau Kappa Epsilon — Social Chairman, Football, Baseball



Mary Susan Eastwood
 Stevens Point, Wis.
 Letters and Science
Major: Music
Minor: History
 Alpha Kappa Rho, Band, Choir, Inter-Varsity Christian Fellowship, Camera Club

Carole A. Emerich
 Madison, Wis.
 Primary
Minor: History
 Primary Council, Tau Gamma Beta



Elaine Eis
 Two Rivers, Wis.
 Secondary
Major: Home Economics
Minor: General Science
 Home Economics Club, Iris, Newman Club, Alpha Sigma Alpha



James M. Engel
Wisconsin Rapids, Wis.
Letters and Science
Major: Biology
Conservation
Alpha Kappa Lambda,
Band, Alpha Beta Rho,
Dorm Council



Donna L. Etten
Medford, Wis.
Intermediate
Round Table, Women's
Recreation Association
— Board Member, New-
man Club, Omega Mu
Chi, Orchesis

Robert Fellenz
Marshfield, Wis.
Secondary
Major: Chemistry
Minor: Physics
Mathematics
Young Democrats, New-
man Club



Eugene H. Fassbender
Kaukauna, Wis.
Secondary
Major: History
Minor: English
Sociology



Ray J. Fletcher
Rhineland, Wis.
Intermediate
Round Table, Wesley



David F. Folz
Stevens Point, Wis.
Letters and Science
Major: History
Social Science



Louella R. Freeberg
Wisconsin Rapids, Wis.
Intermediate
Rural Life, Round Table,
Orchestra, Choir, Inter-
varsity

Neil P. Fuller
New London, Wis.
Major: Biology
Minor: Physical Educa-
tion, Philoso-
phy Psychology
Newman Club, Track





Robert R. Fuller
Portage, Wis.
Secondary
Major: English
Minor: Biology
Conservation
Alpha Kappa Lambda



Wayne H. Galler
Whittlesey, Wis.
Intermediate
Minor: Physical Educa-
tion
Round Table, Phi Sigma
Epsilon, Camera Club

Sharon Gjermundson
Wittenberg, Wis.
Primary
Primary Council, Col-
lege Women's Associa-
tion — Board Member,
Glee Club, **Pointer**, Luth-
eran Student's Associa-
tion, Alpha Sigma Al-
pha



Lois Gehres
Marshfield, Wis.
Secondary
Major: English
Minor: History
German
Sigma Tau Delta, **Point-**
er, Iris, German Club,
Young Democrats —
Treasurer



Rhody L. Grasamke
Stevens Point, Wis.
Secondary
Major: Mathematics
Minor: Physics
General Science
Sigma Zeta, Wisconsin
Education Association,
National Education As-
sociation



Tom Gruman
Baraboo, Wis.
Secondary
Major: History
Minor: English
Speech,



Rita Mae Green
Schofield, Wis.
Letters and Science
Major: Home Econom-
ics
Minor: General Science
Home Economics Club,
Newman Club

Allene Grimm
Stratford, Wis.
Primary
Minor: German
Primary Council —
Treasurer, Dorm Coun-
cil, Band, Trigon — Sec-
retary-Treasurer, Alpha
Sigma Alpha — Presi-
dent, Intersorority Coun-
cil, Nelson Hall Treasur-
er





Larry Gunderson
 Aniwa, Wis.
 Secondary
Major: History
Minor: Political Science
 Geography
 Siasefi, Alpha Beta Rho



Mrs. Blanche M. Haag
 Boulder Junction, Wis.
 Primary
 W.E.A., N.E.A., Primary
 Council

George H. Hahner
 Wisconsin Rapids, Wis.
 Secondary
Major: History
Minor: English,
 Political Science
 Alpha Gamma — Presi-
 dent, Critique



Clifford Haas
 Roxbury, Wis.
 Secondary
Major: Mathematics
Minor: Physics
 General Science
 Sigma Zeta, National
 Education Association,
 Wisconsin Education As-
 sociation, National
 Council of Teachers of
 Mathematics, **Pointer** —
 Business Manager and
 Editor, Newman Club,
 German Club, Camera
 Club



Rochelle Handt
 Larsen, Wis.
 Secondary
Major: Home Economics
Minor: General Science
 Home Economics Club,
 Lutheran Student's Association,
 Tau Gamma Beta



Robert G. Hanes
 Amherst Junction, Wis.
 Secondary
Major: History
Minor: Biology
 General Science
 Alpha Gamma, Critique,
 Phi Sigma Epsilon, Homecoming
 Chairman



Larry E. Hanneman
 Wisconsin Rapids, Wis.
 Letters and Science
Major: Conservation
 Biology
 Alpha Kappa Lambda

Herbert Alan Hassel
 Marathon, Wis.
 Secondary
Major: English
Minor: Speech
 Geography
 Intramurals





Thomas E. Higgins
Stevens Point, Wis.
Letters and Science
Major: Conservation
AKL, Newman Club,
Camera Club



Ron Hoenisch
Wausau, Wis.
Secondary
Major: History
Minor: Physical Educa-
tion
English
S Club, Football, Base-
ball, Basketball

Cecelia Howe
Green Bay, Wis.
Intermediate
Round T a b l e , Mixed
Choir, College Theater,
Newman Club, Cheer-
leader



William E. Hoppe
Park Falls, Wis.
Letters and Science
Major: Conservation
Minor: Biology
Alpha Kappa Lambda,
550's



Derl Charles Howe
Wycena, Wis.
Secondary
Major: English
Minor: Speech,
History
College Theatre, New-
man Club



William Hummel, Jr.
Juneau, Wis.
Secondary
Major: Chemistry
Minor: Mathematics
Physics
Siasefi



Stuart Hunt
Colby, Wis.
Letters and Science
Major: Conservation
Biology
Alpha Kappa Lambda,
Band

Lyle D. Jacobs
Muncie, Indiana
Secondary
Major: Conservation
Minor: Biology
General Science
Alpha Kappa Lambda,
550's





Wayne Loyd Jaeckel
 Marshfield, Wis.
 Secondary
Major: Music
Minor: English
 Alpha Kappa Rho, Music Educators National Conference, Band, Swing Band



Barbara Jenkins
 Stevens Point, Wis.
 Letters and Science
Major: History
 Student Union Board — Secretary, Glee Club, College Theater — Treasurer, Critique, Alpha Sigma Alpha — President, Young Democrats — Treasurer, Student Librarian, Intersorority Council — President

Peggy Johnson
 Algoma, Wis.
 Primary
 Primary Council, College Women's Association — Executive Board, Student Council, Concert Band, Newman Club, Tau Gamma Beta



Wyona Mae Jeske
 Shawano, Wis.
 Intermediate
 Rural Life, Round Table, National Education Association Student Council, Gamma Delta, Young Republicans



Richard Jokela
Tripoli, Wis.
Major: Music
Minor: History
Band, Mixed Chorus,
550's



Curtiss D. Judd
Madison, Wis.
Secondary
Major: Conservation
Minor: Biology
General Science
Alpha Kappa Lambda
— Vice President and
Treasurer, 550's — Pres-
ident, Secretary, Ser-
geant at Arms, and
Treasurer



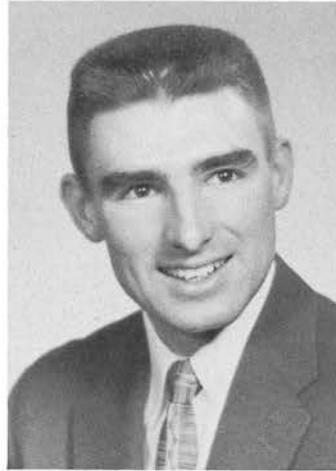
Robert Judson
Stevens Point, Wis.
Secondary
Major: History
Minor: English,
Chemistry

Phillip Kamke
Merrill, Wis.
Letters and Science
Major: Economics
Minor: Mathematics
Chemistry
S Club, Football



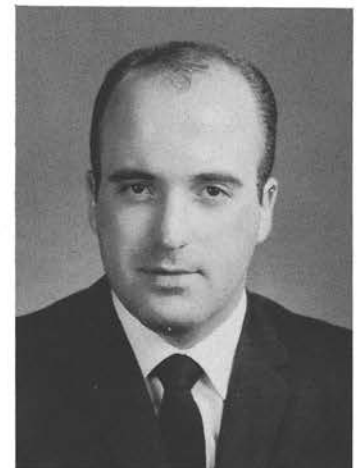


William J. Kastner
Kohler, Wis.
Secondary
Major: Conservation
Minor: Biology
General Science
Alpha Kappa Lambda,
Newman Club, 550's



Ronald Kerl
Janesville, Wis.
Secondary
Major: Conservation
Biology
Minor: General Science
Alpha Kappa Lambda,
Alpha Beta Rho

John Klonsinski
Nekoosa, Wis.
Letters and Science
Major: Economics
Minor: History
Social Science
S Club, Baseball



Jon P. Kleiber
Waukesha, Wis.
Intermediate
Minor: English
Round Table, Men's
Glee Club, Radio-TV
Workshop, Lutheran
Student's Association —
President, 550's, Young
Republicans, Intramu-
rals



William J. Kopp
Oshkosh, Wis.
Letters and Science
Major: Mathematics
German
Minor: Physics
Phi Sigma Epsilon



James A. Kosmicki
Stevens Point, Wis.
Secondary
Major: Biology
Minor: General Science
History
National Education Association, Wisconsin Education Association, Pointer, Newman Club, Alpha Beta Rho



Vivian Krinke
Cambria, Wis.
Secondary
Major: Home Economics
Minor: General Science
Home Economics Club, Iris, Gamma Delta, Alpha Sigma Alpha — Treasurer

Wayne W. Kumm
Shawano, Wis.
Letters and Science
Major: Mathematics
Chemistry
Minor: General Science





Peter Laszewski
Stevens Point, Wis.
Letters and Science
Major: Conservation
Minor: Biology
General Science
AKL, Newman Club



Samuel J. Leghorn
Plainfield, Wis.
Elementary
Round Table

Huntley Lewis
Oconto Falls, Wis.
Secondary
Major: Chemistry
Minor: Mathematics
Physics
Band, Wesley



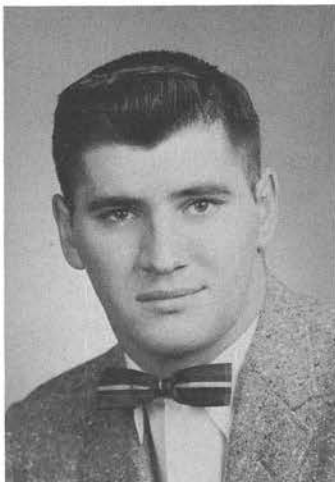
Miram W. Lenz
Mosinee, Wis.
Letters and Science
Major: Biology
Conservation
Minor: General Science



Donald Linskens
Kaukauna, Wis.
Secondary
Major: Biology
Minor: General Science
Conservation
550's, Alpha Beta Rho



Fred Lodzinski
Stevens Point, Wis.
Letters and Science
Major: Chemistry
Minor: Mathematics
Physics
Sigma Zeta, Newman
Club



Ted Ludeman
Laona, Wis.
Letters and Science
Major: History
Minor: Economics
Physical Educa-
tion
Newman Club, Siasefi,
S Club, Football

La Vern Luebstorf
Milwaukee, Wis.
Secondary
Major: Mathematics
Minor: English
French
Student Council, Phi Sig-
ma Epsilon, S Club, Bas-
ketball, Track





Priscilla Ann Lundberg
Wisconsin Rapids, Wis.
Secondary
Major: Music
Minor: English
Alpha Kappa Rho, Col-
lege Women's Assacia-
tion, Band, Choir, Mad-
rigals, Opera, Brass En-
semble, Wayland, Al-
pha Sigma Alpha



John H. Maines
Sayner, Wis.
Letters and Science
Major: Chemistry
Minor: Mathematics
Physics
S Club, Baseball

Betty Marvin
Waukesha, Wis.
Secondary
Major: History
Minor: Political Science
Geography
Wesley, Alpha Sigma
Alpha



Richard D. Marko
Stevens Point, Wis.
Intermediate
Minor: Art
Round Table, B a n d ,
Swing-band, Iris, Phi
Sigma Epsilon, Siasefi,
S Club, Basketball Man-
ager, Campus Bowling
League — President



Joanne Marvin
Marshfield, Wis.
Primary
Primary Council, Omega Mu Chi



Paul Massey
Rhineland, Wis.
Secondary
Major: Mathematics
Minor: Physics
General Science
Basketball, Track



Helen Kayomi Matsuoka
Waimea, Kauai, Hawaii
Intermediate-Upper Ele.
Round Table, Girl's Glee Club,
Wayland Club, Alpha Sigma Alpha

Werner W. McIver
Waupun, Wis.
Letters and Science
Major: History
Minor: Political Science
Speech
Radio Workshop





Robert Mann McLendon
Wisconsin Rapids, Wis.
Letters and Science
Major: Social Science
Minor: Political Science
Sociology,
Economics
Choir, Glee Club, Mad-
rigal, Iris, Trigon, Sigma
Phi Epsilon, YGOP



Art McMillion
Crandon, Wis.
Secondary
Major: English
Minor: History,
Speech
Sigma Tau Delta,
Wordsworth Editor, Phi
Sigma Epsilon

Gerald Meuret
Wausau, Wis.
Secondary
Major: English
Minor: Physical Educa-
tion
Phi Sigma Epsilon,
Pointer, Track



Gerald D. Menzel
Stevens Point, Wis.
Letters and Science
Major: Economics
Minor: Sociology
Political Science
Trigon — President,
Young Republicans —
President, 550's, Col-
lege Director, Wisconsin
Federation of Young Re-
publicans



Mary Michalski
Merrill, Wis.
Primary
Minor: English
Primary Council, Newman Club, Women's Recreation Association



Jerry J. Miller
Neenah, Wis.
Letters and Sciences
Major: Conservation
Minor: Geography,
General Science
AKL, Camera Club, LSA,
Tennis, Intramurals



Sue A. Mills
Endeavor, Wis.
Primary
Major: Primary
Minor: English
Primary Council-Vice President, College Choir, Glee Club, Wesley, Tau Gamma Beta

Ronald L. Misiorowski
Stevens Point, Wis.
Major: Chemistry
Minor: Math
Physics
Sigma Phi Epsilon



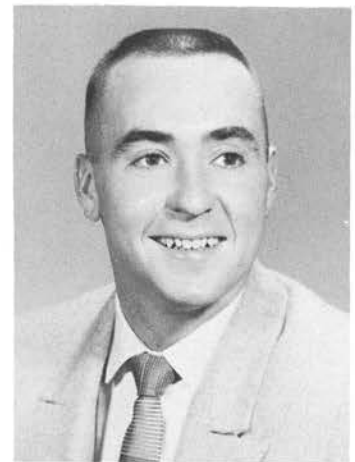


Daniel W. Misner
Beloit, Wis.
Secondary
Major: Biology
Minor: Conservation,
General Science
AKL, Canterbury Club,
Alpha Beta Rho — Pres-
ident, Football, Basket-
ball Manager



Harold Mlsna
Nekoosa, Wisconsin
Secondary
Major: Math
Minor: Physics,
General Science
Newman Club, 550's

Gerald F. Mrochek
Wisconsin Rapids, Wis.
Secondary
Major: Math
Minor: Chemistry,
Physics



Ronald Morrell
Green Bay, Wis.
Letters and Science
Major: Conservation
Minor: Biology
Senior Class Vice-Presi-
dent



Theresa J. Nadolski
Portage, Wis.
Secondary
Major: Home Economics
Minor: General Science
Home Ec Club, Girl's
Glee Club, Iris Staff,
Newman Club



Ronda R. Narlow
Bowler, Wis.
Secondary
Major: Home Economics
Minor: General Science
Home Ec Club, Band,
Girl's Glee Club, Gamma
Delta



Mary Nixon
Elton, Wis.
Secondary
Major: English
Minor: Speech,
History
Sigma Tau Delta, Col-
lege Theater, 3 Act Play,
Wordsworth, Radio
Workshop, Newman
Club

Joseph Alexander Obey
Tomahawk, Wis.
Intermediate
Men's Glee Club,
Newman Club, Football





Alton T. Olson

Iola, Wis.

Secondary

Major: Math

Minor: Physics,
Chemistry

Sigma Zeta, Choir,
Men's Glee Club, LSA,
Phi Sigma Epsilon



Russell J. Olson

Osseo, Wis.

Secondary

Major: History

Minor: English
Physical Educa-
tion

Alpha Gamma

Rose Mary Opichka

Hillsboro, Wis.

Secondary

Major: Home Econom-
ics

Minor: General Science
Home Ec Club, Iris,
Newman Club, Alpha
Sigma Alpha, Dorm
Counselor

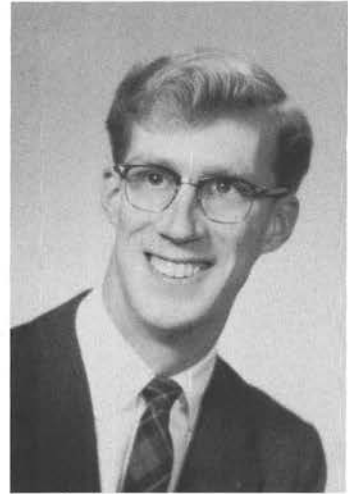


Barbara Ann Omernik

Stevens Point, Wis.

Intermediate

Round Table, Girl's Glee
Club, String Ensemble,
Newman Club



Anthony Pass
 Rhinelander, Wis.
 Secondary Ed.
Major: Math
Minor: History,
 Physics
 College Choir, Band,
 Newman Club, Sigma
 Phi Epsilon



Peggy Paulson
 Stetsonville, Wis.
 Intermediate
Major: Education
Minor: Physical Educa-
 tion
 Round Table, Choir,
 Newman Club, WRA —
 Treasurer



Kenneth G. Peabody
 Wausau, Wis.
 Intermediate
 Round Table

Virginia Peterson
 Brantwood, Wis.
 Primary
 Primary Council, Col-
 lege Theatre, Newman
 Club,
 Women's Recreation As-
 sociation





Theron C. Polivka
 Grand Marsh, Wis.
 Letters and Science
Major: Economics
Minor: History
 Siasefi



Carole Ann Prah
 Rhinelander, Wis.
 Primary Council, Girl's
 Glee Club, Wesley, Tau
 Gamma Beta, German
 Club, Lambda Chi

Betty Jane Radue
 Chili, Wis.
 Primary
Major: Education
Minor: Psychology,
 Philosophy
 Primary Council, WRA,
 Girl's Glee Club, Gam-
 ma Delta



Gloria D. Radloff
 Wisconsin Rapids, Wis.
 Secondary
Major: History
Minor: English,
 Geography
 Alpha Gamma, Iris
 Staff, Wesley, Omega
 Mu Chi, Treasurer



Donald R. Rank
Manitowoc, Wis.
Letters and Science
Major: Conservation
AKL, Newman Club,
550's



Paul F. Rasmussen
Green Bay, Wis.
Secondary
Major: World History
Minor: English,
Geography
Young Republicans, In-
ter-Fraternity Council,
Pointer, Newman Club,
Alpha Beta Rho, Intra-
murals



Ervin R. Redding
Stevens Point, Wis.
Letters and Science
Major: Geography
Minor: Math
Physics
Newman Club, S Club,
Basketball

Suzanne I. Rezin
Wisconsin Rapids, Wis.
Letters and Science
Major: English
Minor: French
Intersorority Council —
President, Girl's Glee
Club, Iris Staff, Canter-
bury, Omega Mu Chi





James E. Richards
Gresham, Wis.
Intermediate — Upper
Elementary
S Club, Roundtable,
Soph. Class Pres., Men's
Glee Club, Newman
Club, Basketball



Rita R. Ristow
Wisconsin Rapids, Wis.
Secondary
Major: History
Minor: Geography,
German
Alpha Gamma, Iris,
LSA, Edelweiss Club,
Tau Gamma Beta,
Treasurer

Ronald Rodaer
Green Bay, Wis.
Letters and Science
Major: Conservation
Minor: Biology
Alpha Kappa Lambda



Alice Robley
Bonduel, Wis.
Primary
Major: Education
Minor: History
Primary Council — Cor-
responding Secretary,
Girl's Glee Club, Point-
er Staff, LSA



Harry A. Rothe, Jr.
Plover, Wis.
Letters and Science
Major: Biology,
Conservation



Janet Ruhsam
New London, Wis.
Secondary
Major: Home Economics
Minor: General Science
Home Ec Club, Wesley



Robert Rustad
Stevens Point, Wis.
Letters and Science
Major: History
Minor: Political Science
Tau Kappa Epsilon, Siassefi

Jerome C. Schoen
Caroline, Wis.
Secondary
Major: History,
Geography
Minor: English
Men's Glee Club, LSA,
Track





Herbert Schotz
Merrill, Wis.
Secondary
Major: Conservation
Minor: General Science, Biology
Alpha Kappa Lambda,
Newman Club, Football



James P. Schowalter
Elkhorn, Wis.
Letters and Science
Major: Conservation,
Biology
Minor: General Science
Alpha Kappa Lambda,
Intramurals

William F. Sekel
Beaver Dam, Wis.
Letters and Science
Major: Conservation
Minor: Physical Education,
Biology
AKL — Secretary, Basketball, Intramurals



William M. Scribner
Stevens Point, Wis.
Secondary
Major: Geography
Minor: Conservation,
Chemistry
Alpha Kappa Rho,
Men's Glee Club, Wesley — President



Alex R. Shuda
Stevens Point, Wis.
Secondary
Major: Conservation
Minor: History,
Science, Biology
Phi Sigma Epsilon,
Freshman and Sopho-
more Class Vice Presi-
dent, Newman Club, S
Club, Football, Hockey



Allan George Skinner
Oregon, Wis.
Letters and Science
Major: Conservation
Minor: English,
Biology
AKL, Y-Dems



Beatrice Mae Smith
Wisconsin Rapids, Wis.
Intermediate
Round Table, WEA, NEA

Shirley May Smith
Portage, Wis.
Primary
Major: History
College Theatre, Radio
Workshop, Gamma Del-
ta, Alpha Sigma Alpha,
WRA





Adeline Marie Sopa
Almond, Wis.
Secondary
Major: Biology
Minor: Phy. Ed.,
History
Sigma Zeta, Newman
Club, WRA

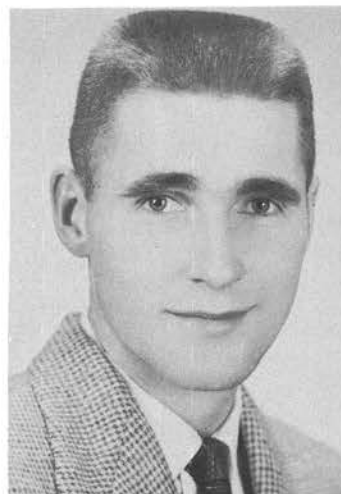


Eugene Sorenson
Stevens Point, Wis.
Secondary
Major: Biology
Minor: Chemistry,
Physical Educa-
tion
Sigma Zeta, Sophomore
Class President,
Junior Class Vice-Presi-
dent, Newman Club —
President, S Club, Wres-
tling, Football, Track

Ruth Stoeberl
Grand Marsh, Wis.
Secondary
Major: English
Minor: History,
German
German Club, Words-
worth, Newman Club



Janis Marie Sotebeer
Green Bay, Wis.
Primary
Primary Council, Gam-
ma Delta, YGOP



Gerald Storm
Merrill, Wis.
Letters and Science
Major: Biology,
Conservation
AKL, S Club, Baseball



Eddie Tao
Hong Kong, China
Letters and Science
Major: Chemistry
Sigma Zeta, Wayland
Club



Manuel Thies
Clintonville, Wis.
Secondary
Major: Biology
Minor: Conservation,
General Science
AKL, LSA

Jay Thurston
Loretta, Wis.
Letters and Science
Major: History,
Geography
Minor: General Science
Newman Club, 550's,
Ski Club





**Thomas Gay
Vandenberg**
Arpin, Wis.
Letters and Science
Major: General Science
College Theatre, Phi
Sigma Epsilon, Campus
Bowling League



Janice Vandervest
Algoma, Wis.
Primary
Primary Council, **Point-**
er Staff, Newman Club,
WRA

Dale H. Vollrath
Greenwood, Wis.
Secondary
Major: History
Minor: Math,
Physics



Pat Van Wormer
Waupaca, Wis.
Secondary
Major: English
Minor: Math,
Biology
Iris Staff, Pointer Staff



Donald Waterman
 Stevens Point, Wis.
 Secondary
Major: Conservation
Minor: Biology
 General Science



Joanne Wallner
 Wisconsin Rapids, Wis.
 Primary
Major: Education
Minor: German
 Primary Council — President, Band, Newman Club, German Club



James J. Wavrunek
 Neillsville, Wis.
 Secondary
Major: Biology
Minor: Geography,
 Conservation
 NEA, WEA, Student Council, Tau Kappa Epsilon

Anita Wegner
 Cambria, Wis.
 Secondary
Major: Home Economics
Minor: General Science
 Home Ec Club, Girl's Glee Club, Wesley





Darlene Welch
Merrill, Wis.
Intermediate
Round Table, Intersorority
Press Representative,
Gamma Delta, Tau
Gamma Beta



John M. Wheaton
Montello, Wis.
Secondary
Major: Biology
Conservation
Minor: General Science
Alpha Kappa Lambda,
Men's Glee Club

Robert Wishowski
Hawkins, Wis.
Secondary
Major: Conservation
Minor: General Science,
Biology



**May Taylor
Winegarden**
Nekoosa, Wis.
Primary
Major: Primary
Minor: History
Primary Council, New-
man Club, WRA



Suzanne Yach
 Stevens Point, Wis.
 Intermediate
 Round Table, Modern
 Dance Group, Girls'
 Glee Club, Newman
 Club, Omega Mu Chi —
 Recording Secretary and
 Alum Secretary



Norbert A. Yingling
 Stevens Point, Wis.
 Letters and Science
Major: Conservation
Minor: General Sci-
 ence, Biology
 AKL — President, 550's



Jerry Young
 Almond, Wis.
 Secondary
Major: Math
Minor: Physics
 Geography
 Newman Club, Alpha
 Beta Rho

Laddie F. Zellinger
 Phillips, Wis.
 Secondary
Major: English
Minor: History,
 Political Science
 Sigma Tau Delta, Alpha
 Gamma, Y-Dems, New-
 man Club





Lewis Zieldorf
Black River Falls, Wis.
Letters and Science
Major: Math,
Chemistry
Minor: Physics

Carl R. Ballenger
Elroy, Wis.
Secondary
Major: Conservation
Minor: General Science
Biology
Band, Wesley, Phi Sigma Epsilon, Alpha Kappa Lambda

Dixie Lee Blom
Bonduel, Wis.
Primary
Alpha Sigma Alpha —
President, Membership
Director, Song Leader,
Primary Council — Press
Representative, College
Women's Association,
— Assistant Treasurer,
Glee Club, Lutheran
Student's Association,
Nelson Hall President,
Nelson Hall Councilor,
1957 Homecoming
Queen Candidate

C. Patrick Collier
New London, Wis.
Secondary
Major: Mathematics
Minor: Physics
Speech
Philosophy
National Education Association, Student Council — President, Dramatics, Forensics, Debate Team, Wisconsin Education Association

Mrs. Norma Cone
Wisconsin Dells, Wis.
Intermediate and Upper
Elementary
Major: Education
Psychology
Minor: English
Economics

Caryol Cutts
Stratford, Wis.
Primary
Minor: History
Primary Council

Alan A. Danke
Fremont, Wis.
Letters and Science
Major: Biology
Conservation
Minor: English
General Science
Gamma Delta, Alpha
Kappa Lambda, S Club,
Track, Wrestling

Mary Friebel
Deerbrook, Wis.
Rural Education
Majors: History,
Geography

Dale E. Jakel
Curtiss, Wis.
Letters and Science
Major: Conservation
Biology

Dewayne P. Grauden
Merrill, Wis.
Letters and Science
Major: Chemistry
Biology
Siasefi

Russell P. Kostrzak
Manawa, Wis.
Secondary
Major: Conservation
Biology
Minor: General Science
Alpha Kappa Lambda,
Iris, Newman Club,
Camera Club

Roy J. Habeck
Shawano, Wis.
Elementary Ed.
WEA, NEA, Wis. Elementary School Principals Assn., **Pointer**, Radio Workshop, Gamma Delta, Sigma Phi Epsilon, Intramural Basketball

Elodia M. Jeranek
Lakewood, Wis.
Rural
WEA, Wabeno Teachers Association, Girls' Chorus

Ramon L. Hagedorn
Neillsville, Wis.
Secondary
Major: History
Minor: Physics
Speech
Tau Kappa Epsilon, National Education Association, Wisconsin Education Association, Men's Glee Club, College Theater, Radio Workshop, Gamma Delta, Debate Club

Rosalyn Lee
Lodi, Wis.
Secondary
Major: Home Economics
Minor: General Science
Home Economics Club, College Women's Association — Board Member, Student Council, Wesley Choir, **Pointer**, Wesley, Alpha Sigma Alpha

Alfred J. Helminski
Stevens Point, Wis.
Secondary
Major: History
Minor: Physical Ed.,
Social Science
S Club, Phi Sigma Epsilon, Football, Basketball

Jane Pichette
Green Bay, Wis.
Secondary
Major: English
Minor: Speech,
History
College Theatre, **Iris**,
Pointer, Newman Club

Siwarn Pochanayon
Dhonburi, Thailand
Intermediate
College Theatre, Round
Table, International
Club, Christian Science
Group

Dorothy Prahl
Wausau, Wis.
Letters and Science
Major: Social Science
Minor: Sociology
Political Science

William R. Schroeder
Columbus, Wis.
Letters and Science
Major: Biology
Minor: History,
Geography
Phi Sigma Epsilon, Foot-
ball, Basketball

Jamshid Soulati
Rezaieh, Iran
Letters and Science
Major: Chemistry
Minor: Math
Student Council-Delzell,
Tau Kappa Epsilon

**Thomas C. Vander
Velden**
Kimberly, Wis.
Letters and Science
Major: Conservation
Minor: Biology
AKL, 550's

John Vania
Algoma, Wis.
Letters and Science
Major: Biology,
Conservation
Sigma Zeta, Alpha Kap-
pa Lambda, Interfrater-
nity Council, Alpha Beta
Rho

Ben A. Wagner
Chilton, Wis.
Letters and Science
Major: Economics
Minor: Geography,
History
Newman Club, Phi Sig-
ma Epsilon

Kenneth C. Walcheck
Waukesha, Wis.
Letters and Science
Major: Biology,
Conservation
Sigma Zeta

James Wazenick
Stevens Point, Wis.
Letters and Science
Major: English
Minor: Math,
Physics
Sigma Tau Delta, One
and Three Act Plays,
College Theatre, S Club,
Football

Nels Werner
Moquah, Wis.
Major: Biology
Conservation
Trigon

**Gertrude Scribner
Whittaker**
Almond, Wis.
Intermediate-Upper
Elementary
Roundtable





CSC Patrons



You are always welcome at **Westenberger's** for your lunch, snack or your favorite soda, and the best in drugs.

Boston's . . . Four Floors of Fine Furniture



When the Delzell men need their clothes cleaned in a hurry, or a white shirt ready for that special date, they know for fast, dependable service they can't beat **Normington's**.





Lullabye Furniture Company has the best of furniture for the newcomer.



Here is just one of the many lovely dresses from the **Quality Store**.



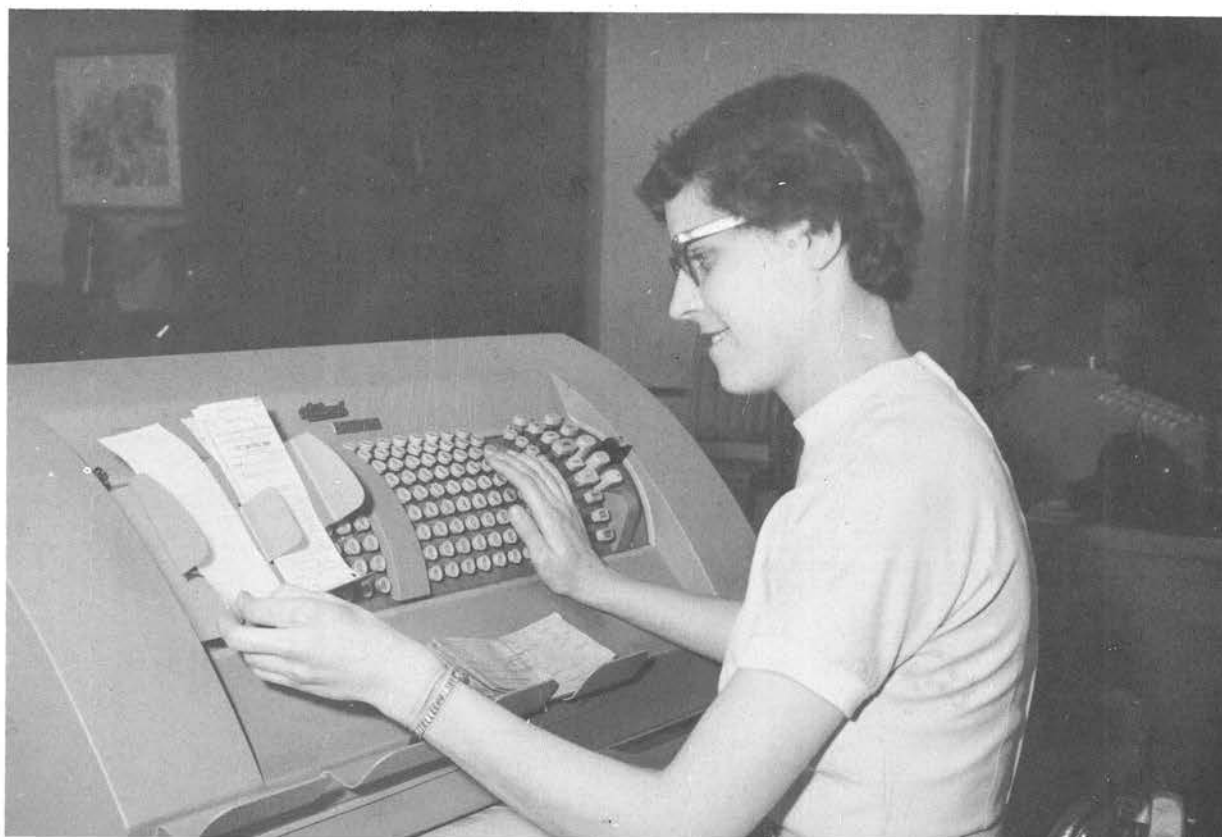


For the finest in furs visit **Nigbor's.**



Bill's Shoe Store for the finest in family footwear

The quick, convenient, free checking service of the **First National Bank** provides aid to the organizations and individuals on campus.



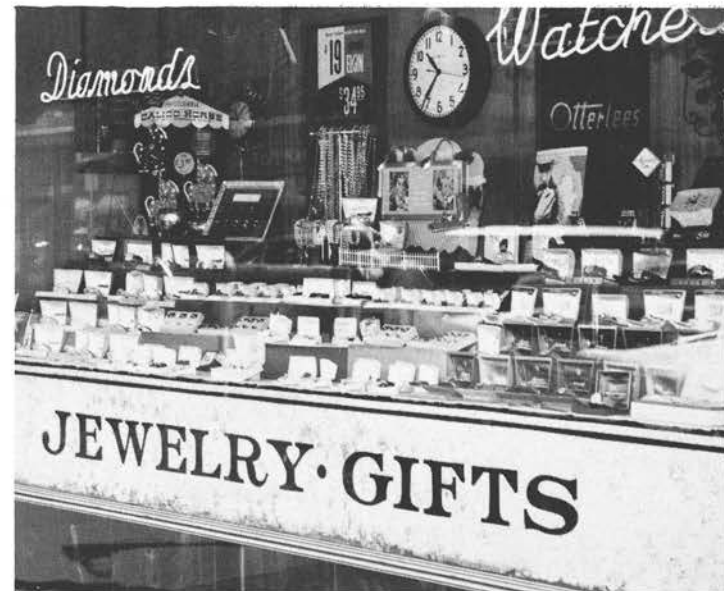


For the newest in women's apparel, shop at **Campbell's**, the shopping center of Stevens Point.

Graham Lane Music and Record Shop

Big Shoe Store for family footwear

Emmons' Student Supply Store for your complete supply needs.



"Hello Young Lovers Wherever You Are" could very well be the theme of **Otterlee's Jewelry Store**, headquarters for all cherishable, lasting gifts.



BENJAMIN JOURNAL

SUPPORTS . . .

CENTRAL STATE
COLLEGE

COMMERCIAL PRINTING
—○—
PUBLISHERS OF
THE STEVENS POINT DAILY JOURNAL

Journal Printing Company



The IGA Foodliners are happy to bring you the finest in groceries and meats.



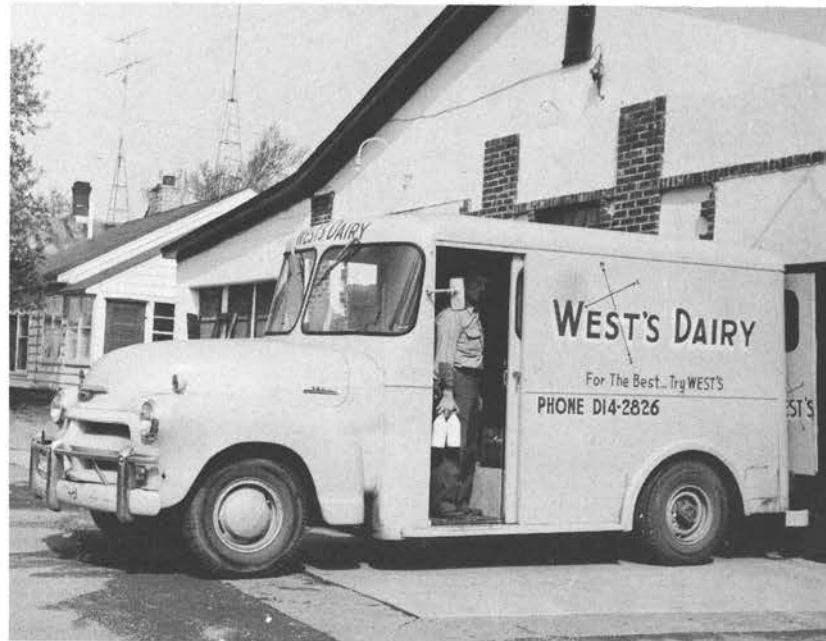


The Breitenstein Company features appliances for your home of today or the one in the future.

Pal Restaurant . . . The Most for Your Meal Budget

Fisher's Dairy for Grade A Milk and Ice Cream

Hotel Whiting



Here is one of the trucks being readied to deliver another load of those fine dairy products sold by West's Dairy.

Pasternacki's Men's Wear . . .
Now in Our 48th Year

Giftowne with books and gifts for everyone



CSC students can find the most for their clothing dollar at the J. C. Penney Company.

Whiting-Plover Paper Company of Stevens Point,
manufacturers of Permanized Bond Ledger and
Thin Paper

For all your drug and photography needs visit
Hannon's Prescription Pharmacy.

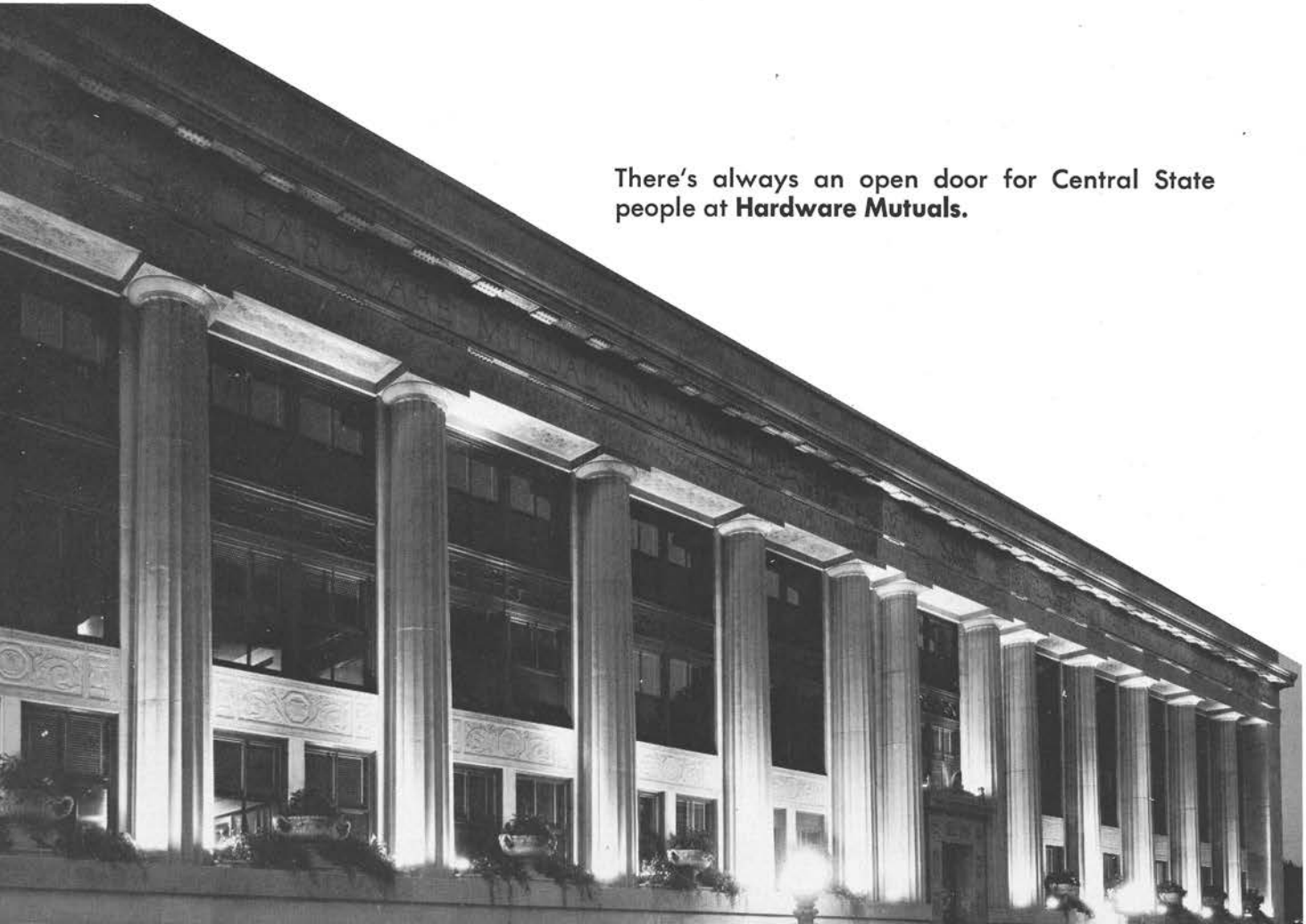


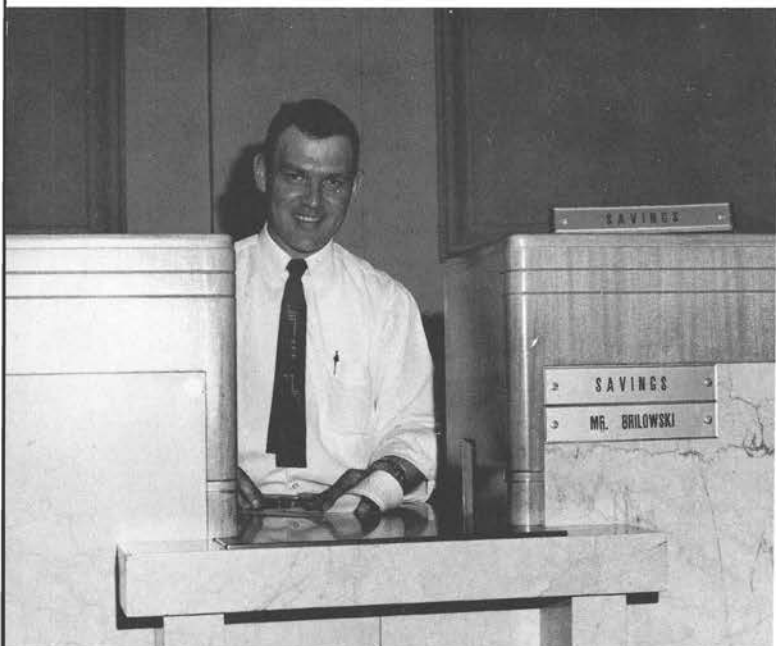
**Ben's Jewelry Store . . . Headquarters for Keep-
sake Diamond Rings**



Sea Food is Our Specialty . . . Hot Fish Shop

**There's always an open door for Central State
people at Hardware Mutuals.**





An efficient way to save your summer earnings
... **Citizens National Bank, Stevens Point**

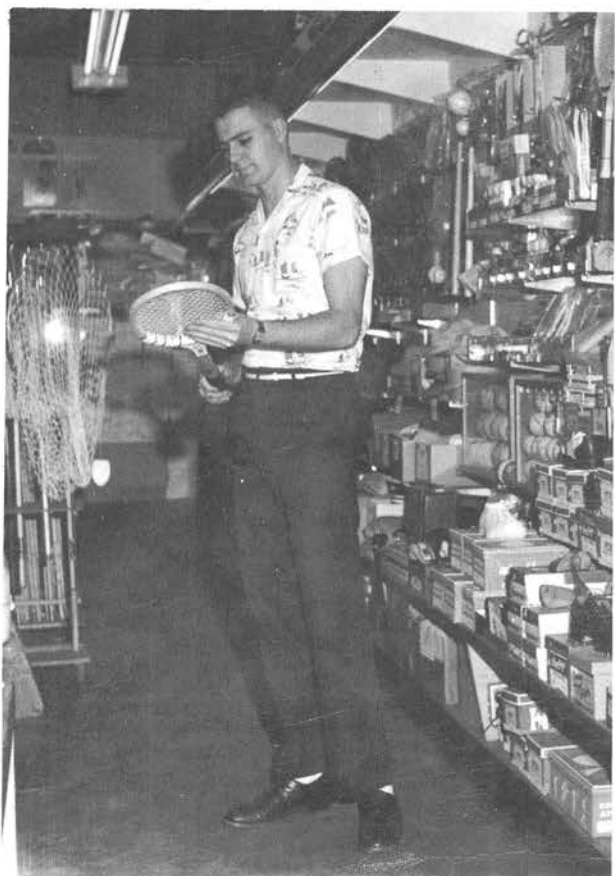
The Campus Cafe

The Great Atlantic and Pacific Tea Co.



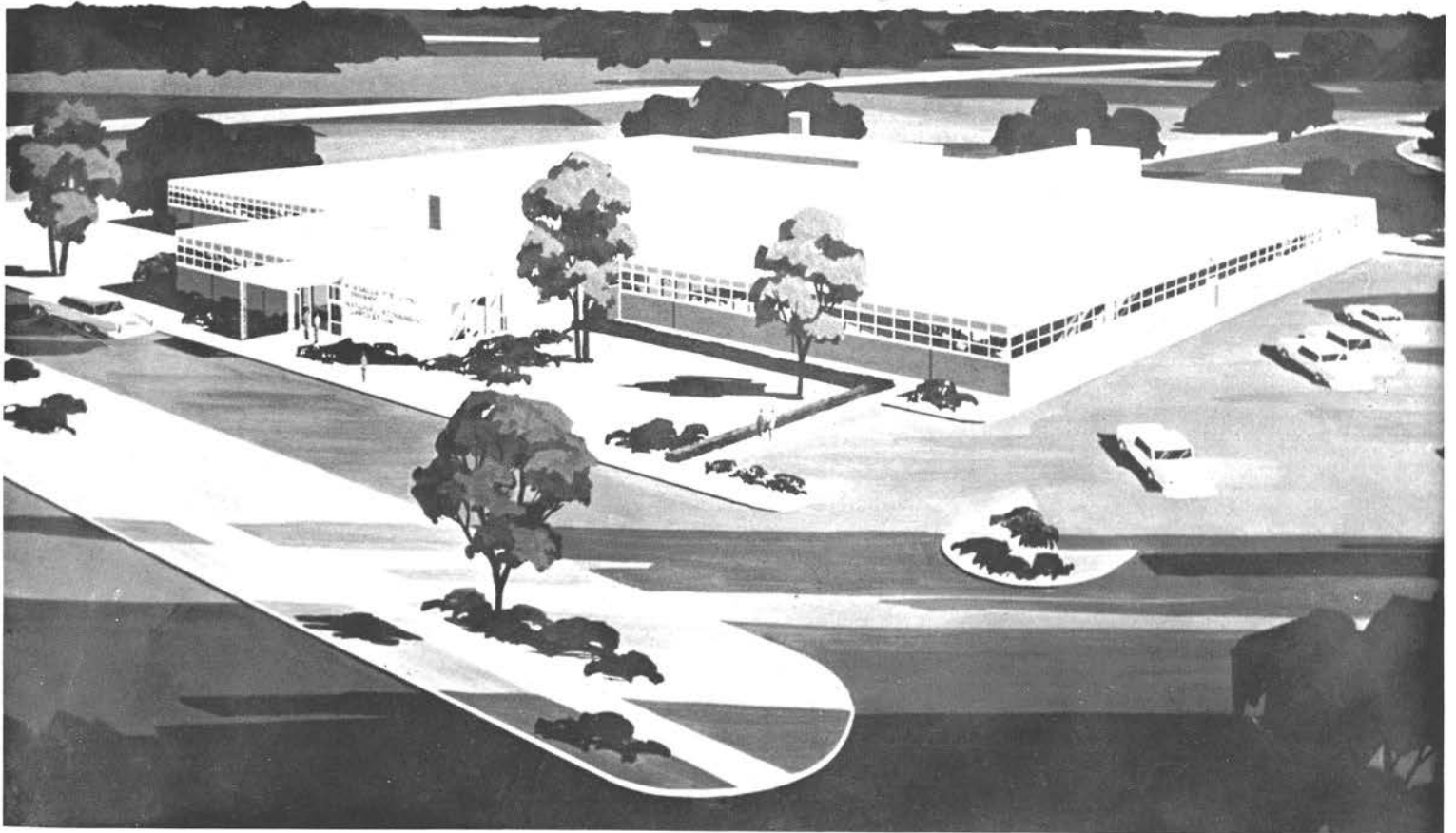
Select your corsage or any floral needs at **Sorenson's Floral Shop**. Personalized service is our by-word.

You'll find all your sport equipment
at the **Sport Shop**.





The Sky Club for Heavenly Food



Worzalla Publishing Company

